

START OF SEASON REPORT GENEVA SUMMER SEASON

30 MARCH - 25 OCTOBER 2014 (S14)

2014

KEY FIGURES	S13	S14	+/-
Cleared Airport Slots	81,534	84,550	3.7%
Seats (1000)	11,366	11,805	3.9%
Seats per Airport Slot	139	140	0.2%
Runway Utilisation	62.6%	64.9%	2.3%
Terminal Utilisation	40.2%	42.4%	2.2%
Number of Carriers	66	75	13.6%

TABLE OF CONTENTS

	Page
Management Summary	2
Overview Main Carriers	3
Runway Histograms	4
Terminal Histograms	5
Slot Shares	6
Traffic Flows, Aircraft Utilisation	7

GLOSSARY OF TERMS

Allocation	The allocation of slots within declared capacity limits.
Capacity Limits	Limiting parameters declared by the Airport Operator used in the coordination process.
Seats	The number of seats based on the aircraft configuration advised by the airline.

GUIDE TO HISTOGRAMS

The histograms show the pattern of traffic by time of day against the appropriate capacity limit. Each time period consists of seven columns representing the days-of-week, Monday through Sunday. All histograms are based on a reference week. For Summer 2014 the reference week is 08-14 September 2014.

OVERVIEW MAIN CARRIERS

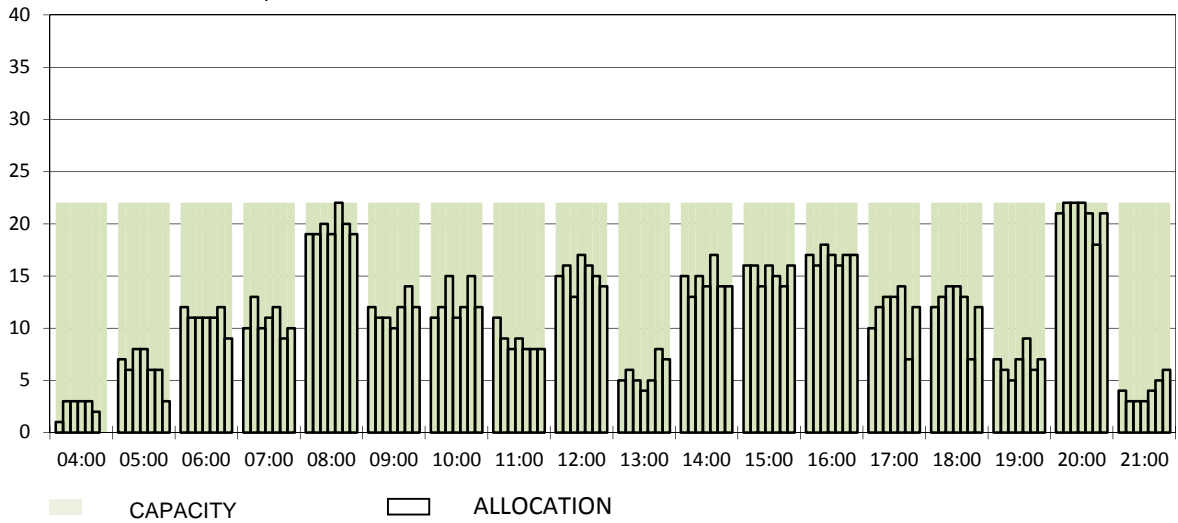
number of average slots per week

	START OF SEASON			
	S13	S14	+/-	Share
ALL CARRIERS	2718	2818	3.7%	
Swiss Carriers	1204	1276	6.0%	45.3%
<i>where of</i>				
EasyJet Switzerland	614	621	1.1%	22.0%
Swiss International Air Lines	438	475	8.4%	16.9%
Darwin Airline	114	162	42.1%	5.7%
Helvetic	19	8	-57.9%	0.3%
Farnair	8	8	0.0%	0.3%
Edelweiss Air	11	2	-81.8%	0.1%
Foreign Carriers	1514	1542	1.8%	54.7%
<i>where of</i>				
EasyJet UK	192	239	24.5%	8.5%
Lufthansa / Germanwings	255	222	-12.9%	7.9%
Air France / HOP	119	116	-2.5%	4.1%
British Airways / BA CityFlyer	104	111	6.7%	3.9%
KLM	84	84	0.0%	3.0%
SN Brussels Airlines	76	76	0.0%	2.7%
TAP Air Portugal	64	65	1.6%	2.3%
Austrian Airlines	49	49	0.0%	1.7%
Turkish Airlines	43	44	2.3%	1.6%
Iberia	46	42	-8.7%	1.5%
Maj. foreign Carriers	1032	1048	1.6%	37.2%

	SLOT RETURN			
	S13	S14	+/-	Share
	2731	2909	6.5%	
	1194	1303	9.1%	44.8%
	616	635	3.1%	21.8%
	440	484	10.0%	16.6%
	105	168	60.0%	5.8%
	14	6	-57.1%	0.2%
	8	8	0.0%	0.3%
	11	2	-81.8%	0.1%
	1537	1606	4.5%	55.2%
	188	256	36.2%	8.8%
	264	224	-15.2%	7.7%
	118	116	-1.7%	4.0%
	104	111	6.7%	3.8%
	84	84	0.0%	2.9%
	76	76	0.0%	2.6%
	64	65	1.6%	2.2%
	49	49	0.0%	1.7%
	43	43	0.0%	1.5%
	46	46	0.0%	1.6%
	1036	1070	3.3%	36.8%

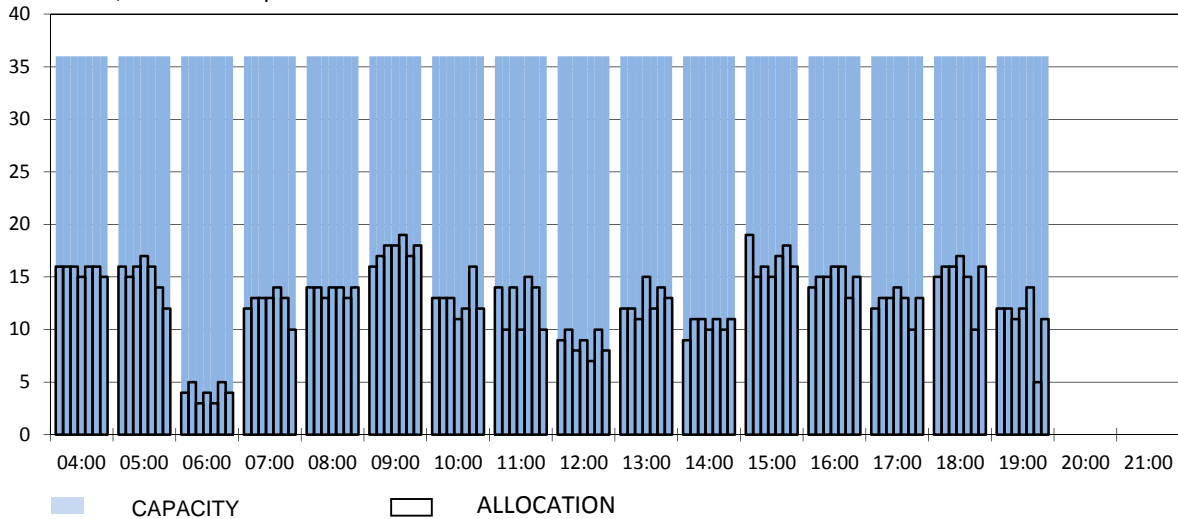
RUNWAY MOVEMENT START OF SEASON - ARRIVALS

Reference week, movements per hour - all times UTC



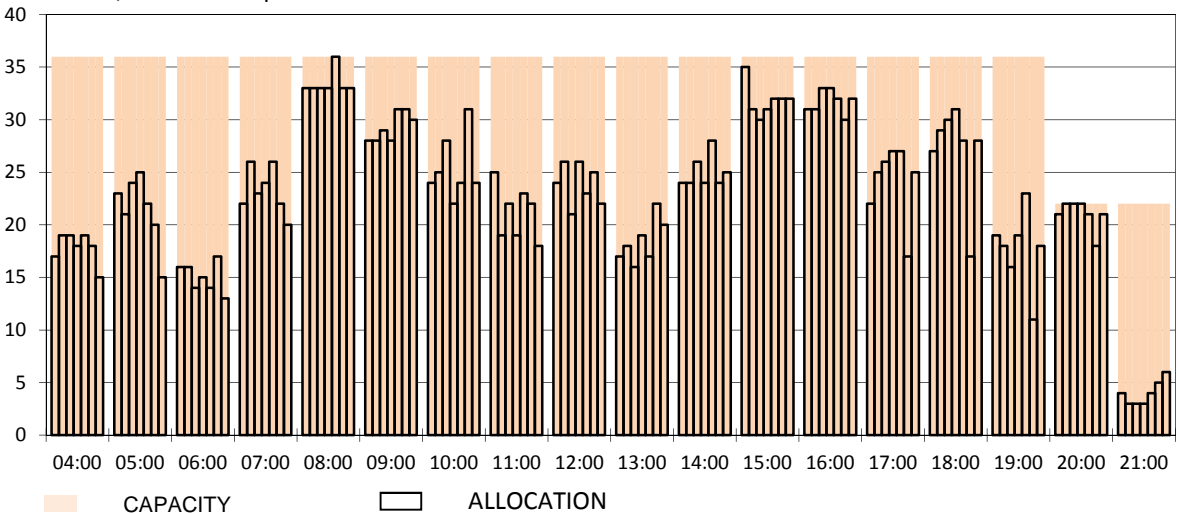
RUNWAY MOVEMENT START OF SEASON - DEPARTURES

Reference week, movements per hour - all times UTC



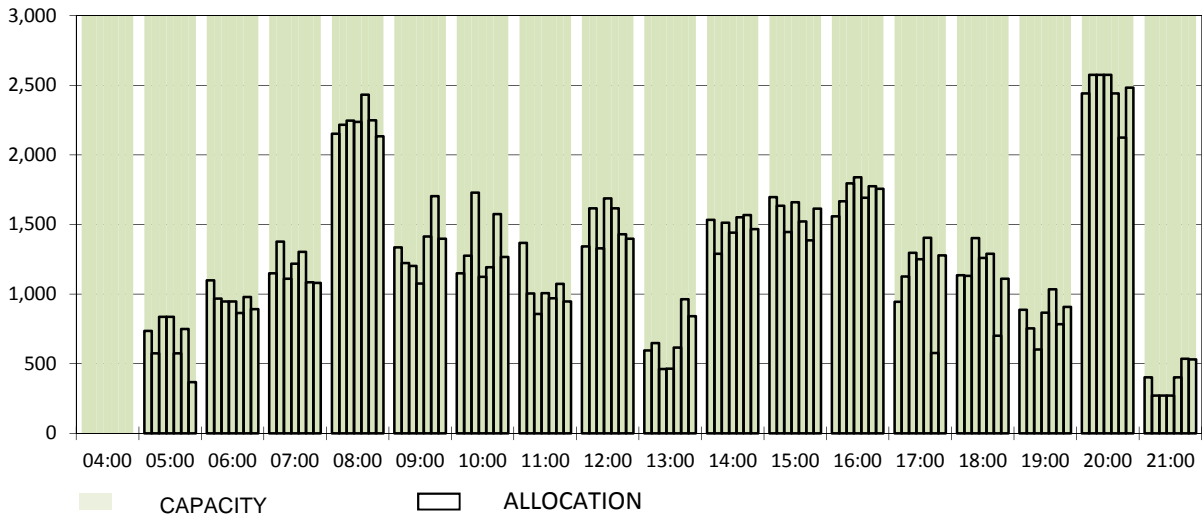
RUNWAY MOVEMENT START OF SEASON - TOTALS

Reference week, movements per hour - all times UTC



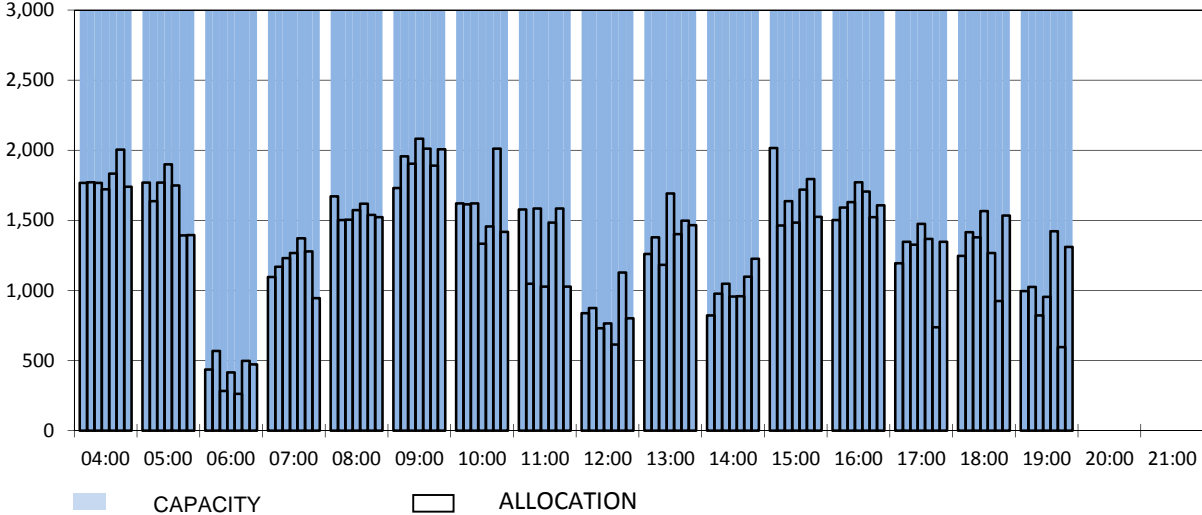
TERMINAL START OF SEASON - ARRIVALS

Reference week, passengers per hour - all times UTC



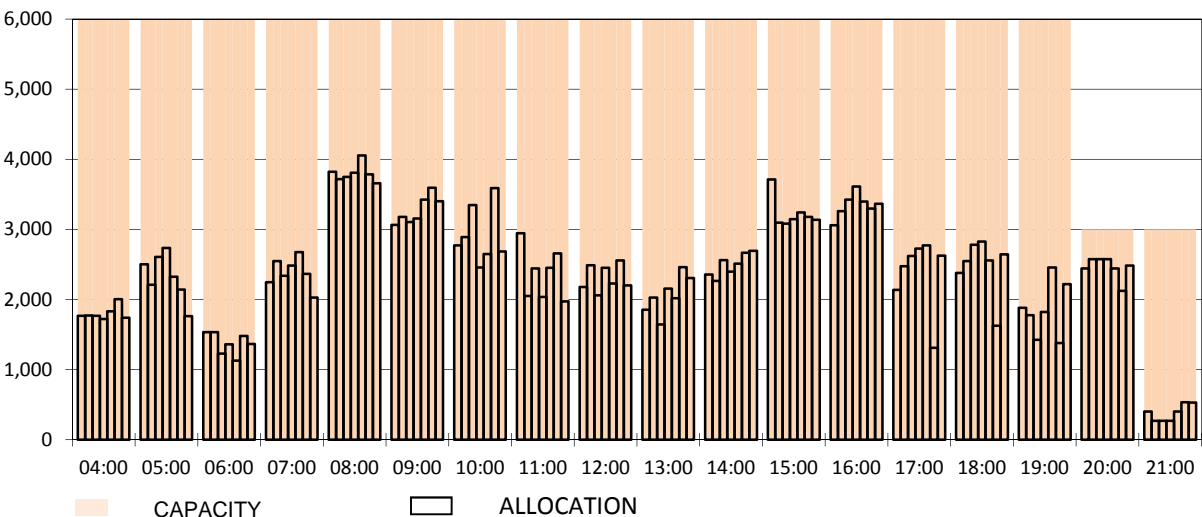
TERMINAL START OF SEASON - DEPARTURES

Reference week, passengers per hour - all times UTC

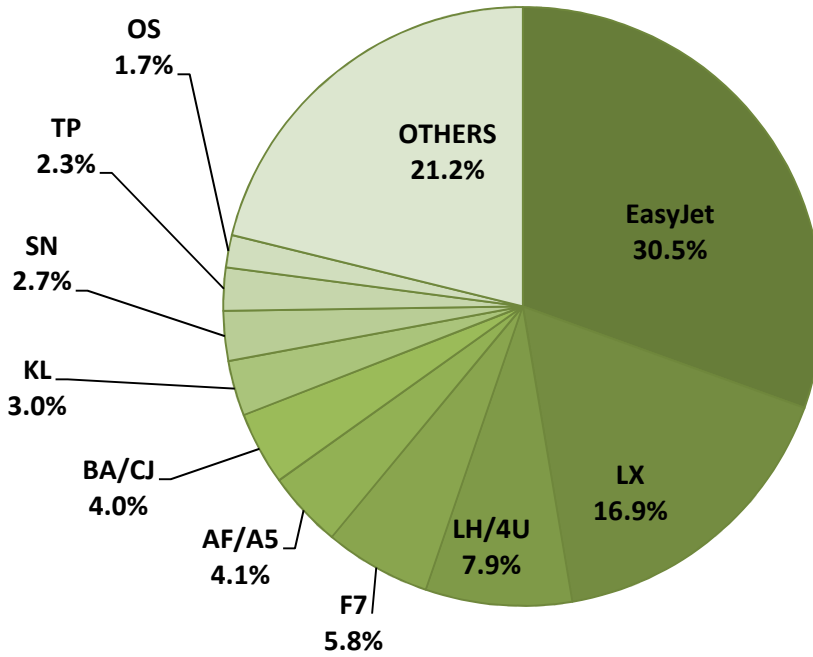


TERMINAL START OF SEASON - TOTALS

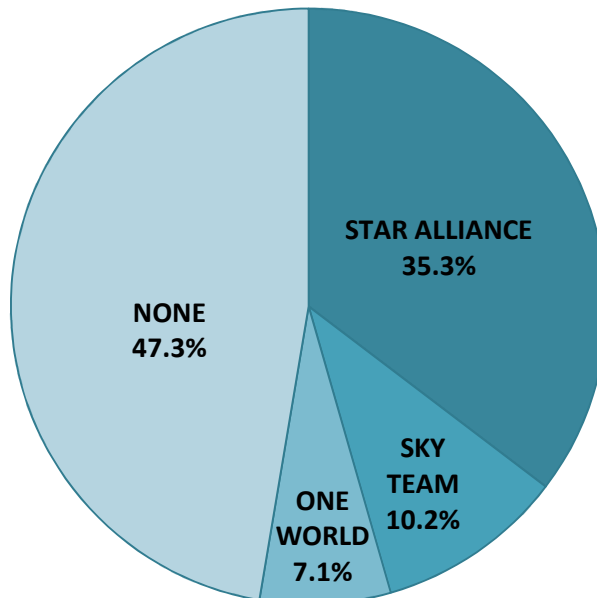
Reference week, passengers per hour - all times UTC



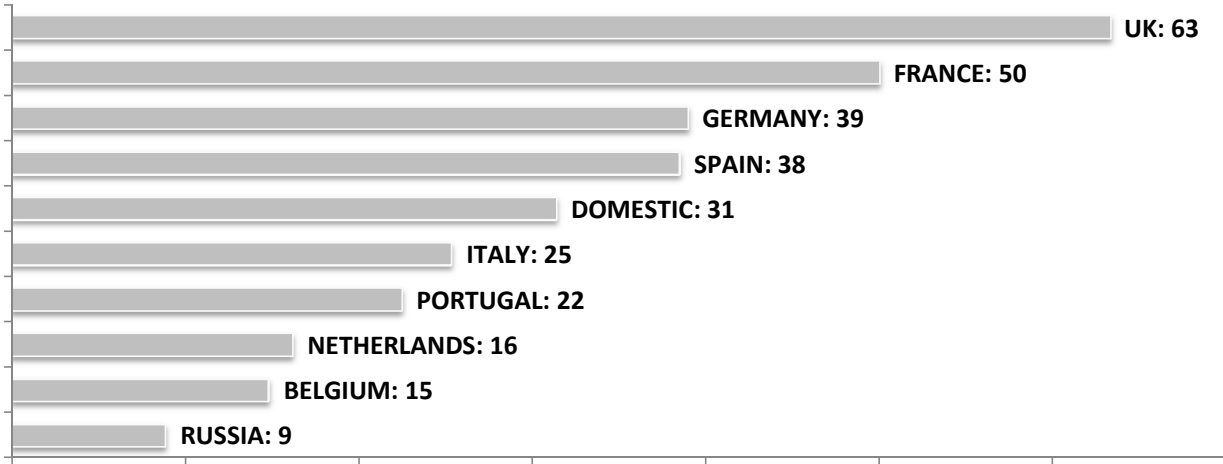
SEASONAL SLOT SHARE - 10 TOP CARRIER



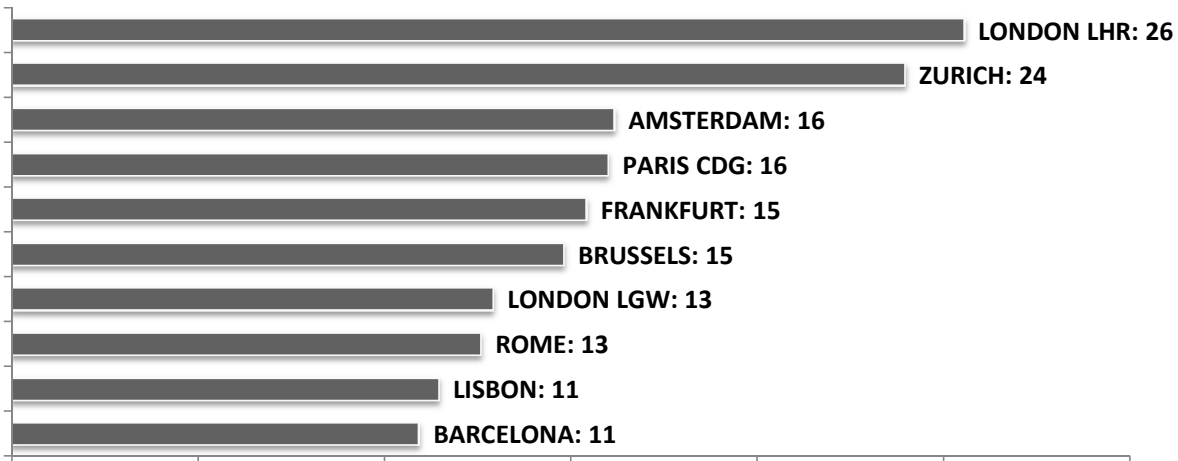
SEASONAL SLOT SHARE - PER ALLIANCES



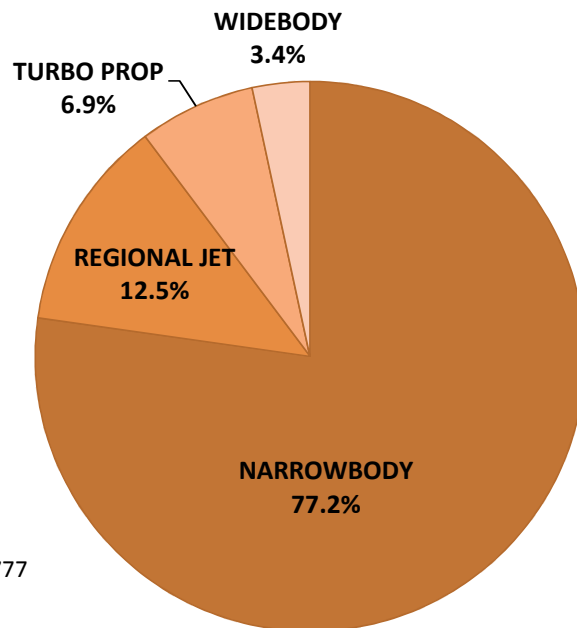
TOP 10 COUNTRIES - Number of Daily Slots



TOP 10 ROUTES - Number of Daily Slots



AIRCRAFT UTILISATION



Aircraft Sizes

- Widebody e.g. A330, A340, B747, B767, B777
- Narrowbody e.g. A32S, B737, B757, F100
- Regional Jet e.g. ARJ, CRJ, ERJ
- Turbo Prop e.g. ATR, DH4, S20