

## START OF SEASON REPORT GENEVA SUMMER SEASON

29 MARCH - 24 OCTOBER 2015 (S15)

# 2015

KEY FIGURES	S14	S15	+/-
Cleared Airport Slots	84,550	<b>86,992</b>	2.9%
Seats (1000)	11,805	<b>12,515</b>	6.0%
Seats per Airport Slot	140	<b>144</b>	3.0%
Runway Utilisation	64.9%	<b>66.8%</b>	1.9%
Terminal Utilisation	42.4%	<b>44.0%</b>	1.6%
Number of Carriers	71	<b>63</b>	<b>-11.3%</b>

### TABLE OF CONTENTS

	Page
Management Summary	2
Overview Main Carriers	3
Runway Histograms	4
Terminal Histograms	5
Slot Shares	6
Traffic Flows, Aircraft Utilisation	7

### GLOSSARY OF TERMS

<b>Allocation</b>	The allocation of slots within declared capacity limits.
<b>Capacity Limits</b>	Limiting parameters declared by the Airport Operator used in the coordination process.
<b>Seats</b>	The number of seats based on the aircraft configuration advised by the airline.

### GUIDE TO HISTOGRAMS

The histograms show the pattern of traffic by time of day against the appropriate capacity limit. Each time period consists of seven columns representing the days-of-week, Monday through Sunday. All histograms are based on a reference week. For Summer 2015 the reference week is 14-20 September 2015.

## OVERVIEW MAIN CARRIERS

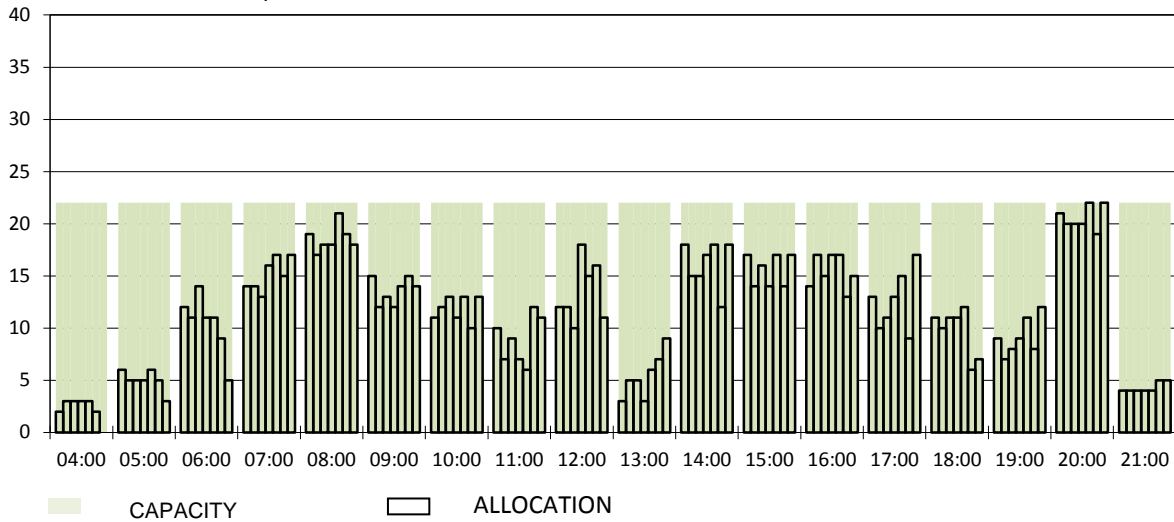
Number of average slots per week

	START OF SEASON			
	S14	S15	+/-	Share
<b>ALL CARRIERS</b>	2818	2900	2.9%	
<b>Swiss Carriers</b>	1276	1256	-1.6%	43.3%
<i>where of</i>				
EasyJet Switzerland	621	643	3.5%	22.2%
Swiss International Air Lines	475	495	4.2%	17.1%
Darwin Airline	162	108	-33.3%	3.7%
Farnair	8	8	0.0%	0.3%
Edelweiss Air	2	2	0.0%	0.1%
<b>Foreign Carriers</b>	1542	1644	6.6%	56.7%
<i>where of</i>				
EasyJet UK	239	285	19.2%	9.8%
Lufthansa	170	173	1.8%	6.0%
British Airways / BA CityFlyer	111	124	11.7%	4.3%
Air France / HOP	116	120	3.4%	4.1%
KLM	84	84	0.0%	2.9%
SN Brussels Airlines	76	76	0.0%	2.6%
TAP Air Portugal	65	64	-1.5%	2.2%
Austrian Airlines	49	49	0.0%	1.7%
Turkish Airlines	44	47	6.8%	1.6%
Germanwings	52	45	-13.5%	1.6%
<b>Maj. foreign Carriers</b>	1006	1067	6.1%	36.8%

	SLOT RETURN			
	S14	S15	+/-	Share
	2909	2925	0.6%	
	1303	1278	-1.9%	43.7%
	635	665	4.7%	22.7%
	484	501	3.5%	17.1%
	168	102	-39.3%	3.5%
	8	8	0.0%	0.3%
	2	2	0.0%	0.1%
	1606	1647	2.6%	56.3%
	256	303	18.4%	10.4%
	172	171	-0.6%	5.8%
	111	125	12.6%	4.3%
	116	122	5.2%	4.2%
	84	84	0.0%	2.9%
	76	76	0.0%	2.6%
	65	62	-4.6%	2.1%
	49	49	0.0%	1.7%
	43	42	-2.3%	1.4%
	52	45	-13.5%	1.5%
	1024	1079	5.4%	36.9%

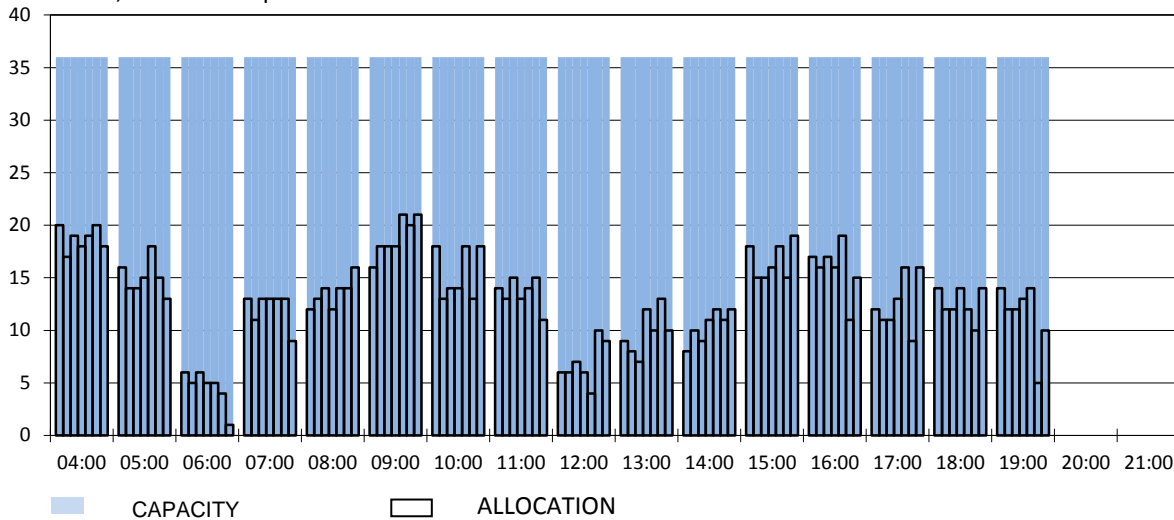
### RUNWAY MOVEMENT START OF SEASON - ARRIVALS

Reference week, movements per hour - all times UTC



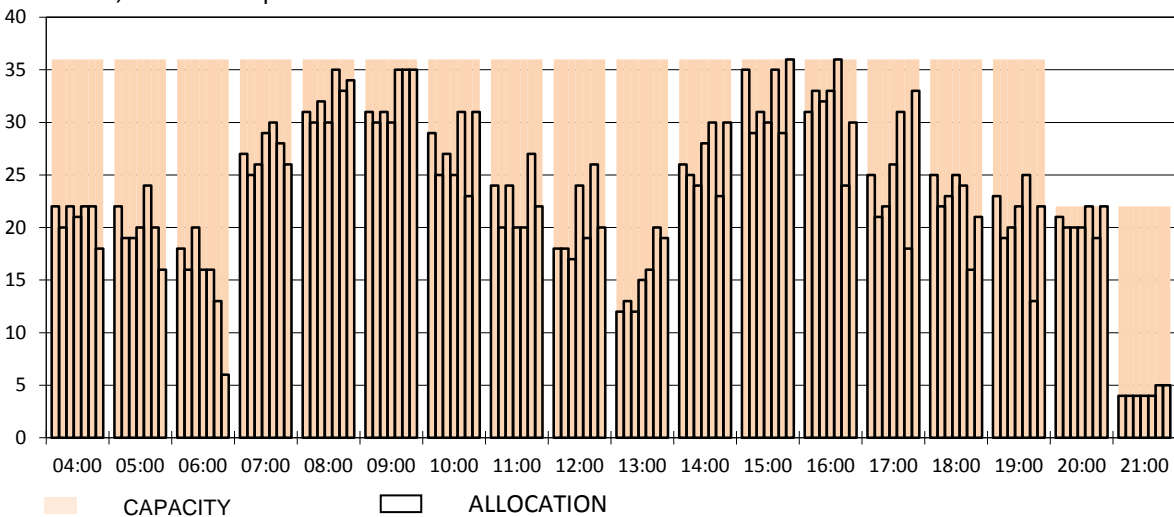
### RUNWAY MOVEMENT START OF SEASON - DEPARTURES

Reference week, movements per hour - all times UTC



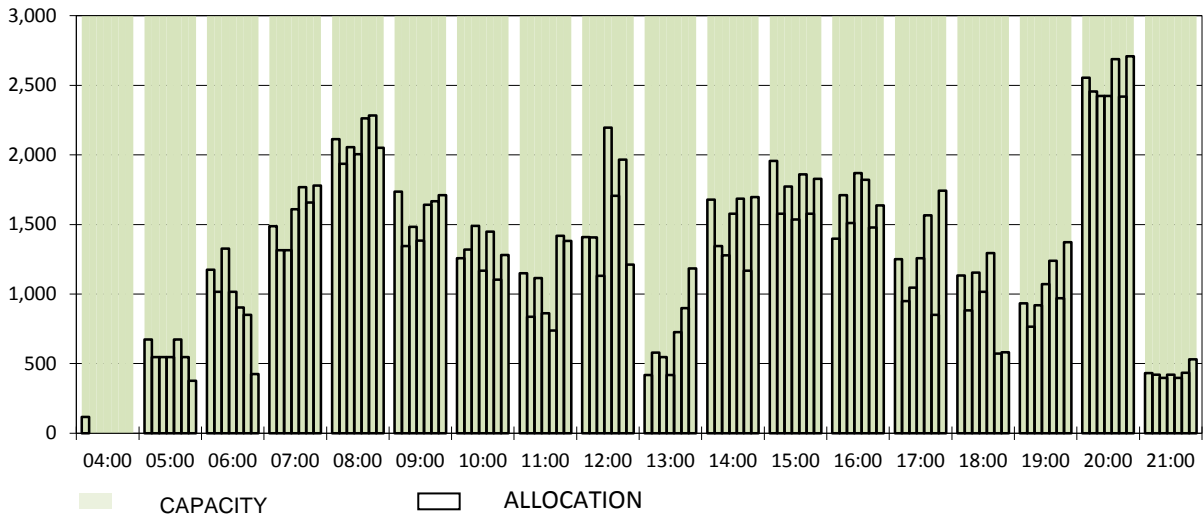
### RUNWAY MOVEMENT START OF SEASON - TOTALS

Reference week, movements per hour - all times UTC



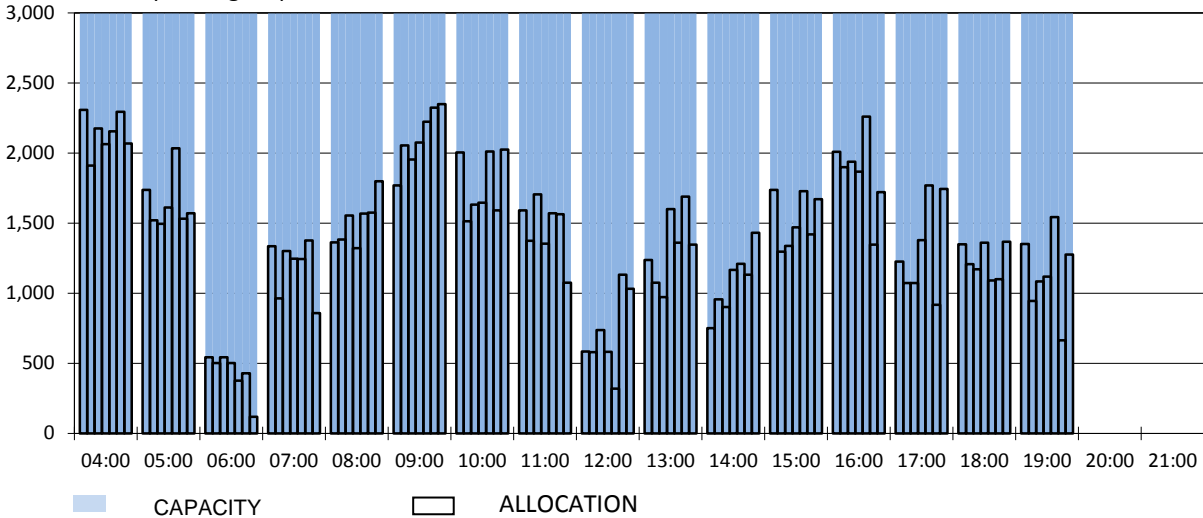
### TERMINAL START OF SEASON - ARRIVALS

Reference week, passengers per hour - all times UTC



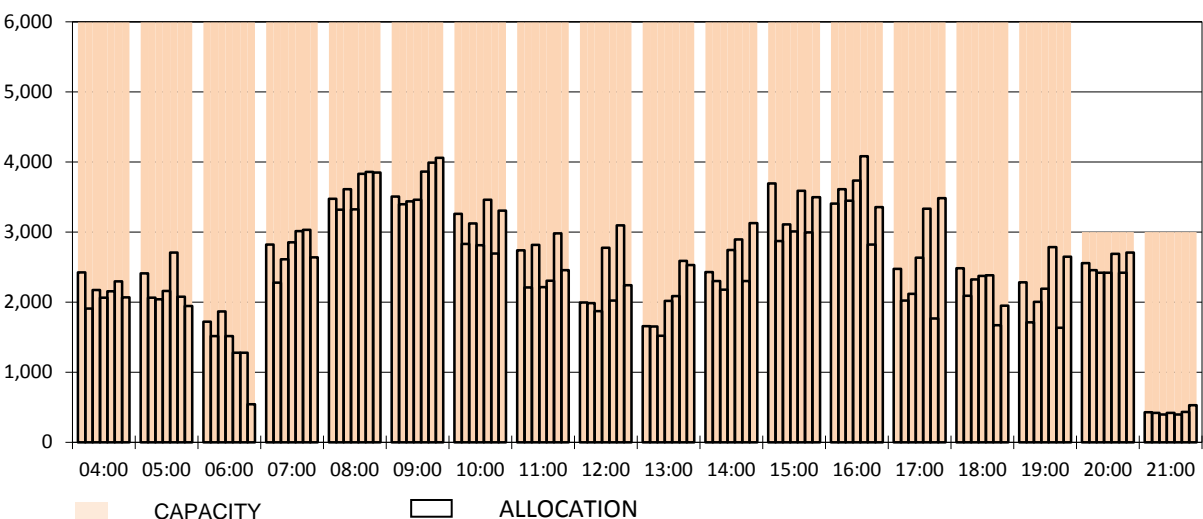
### TERMINAL START OF SEASON - DEPARTURES

Reference week, passengers per hour - all times UTC

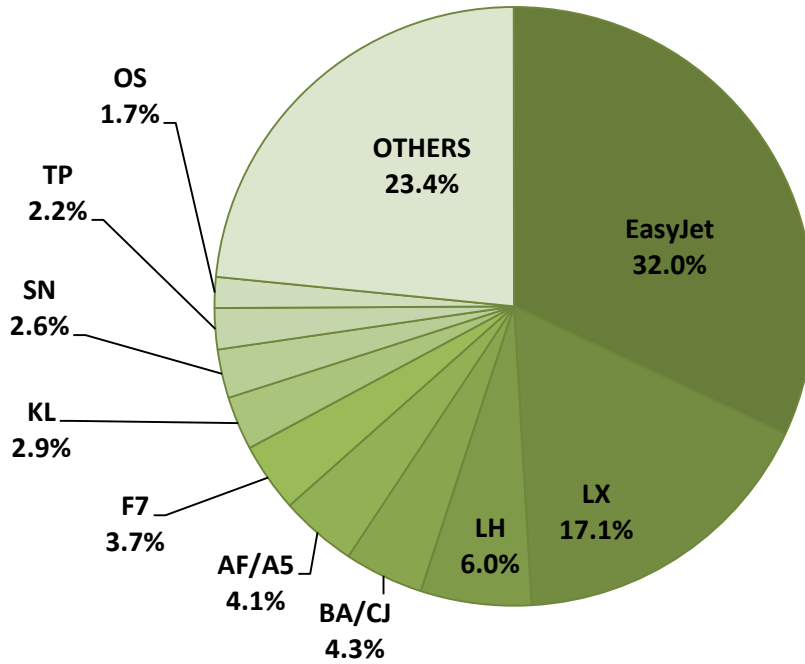


### TERMINAL START OF SEASON - TOTALS

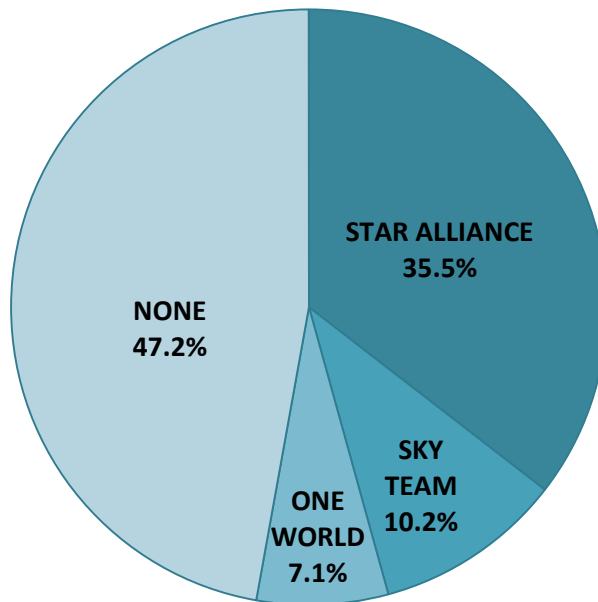
Reference week, passengers per hour - all times UTC



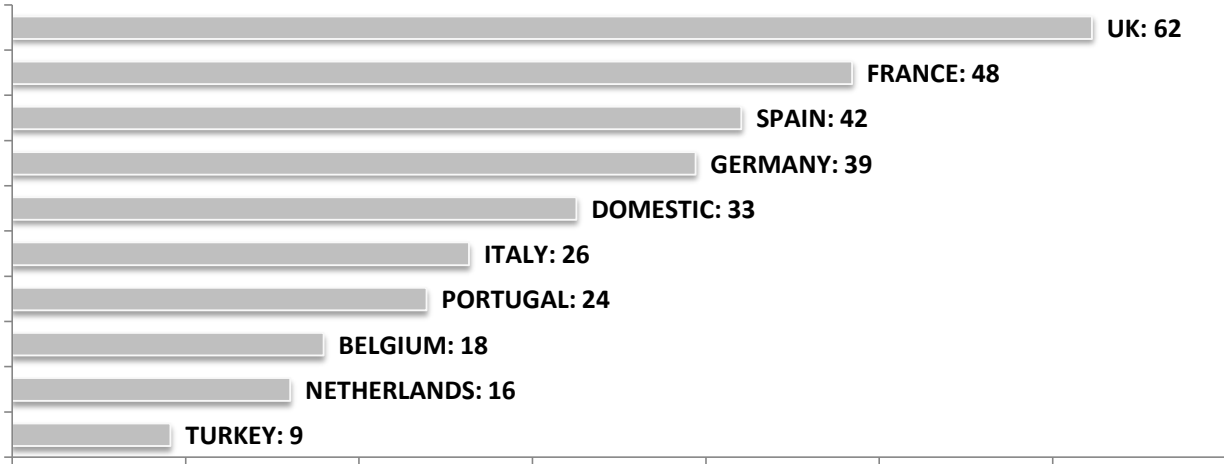
**SEASONAL SLOT SHARE - 10 TOP CARRIER**



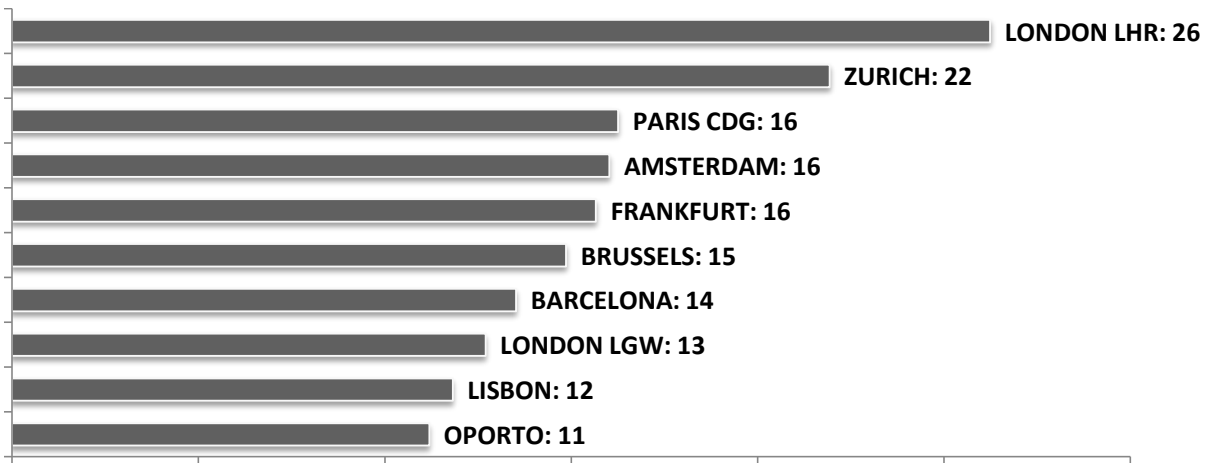
**SEASONAL SLOT SHARE - PER ALLIANCES**



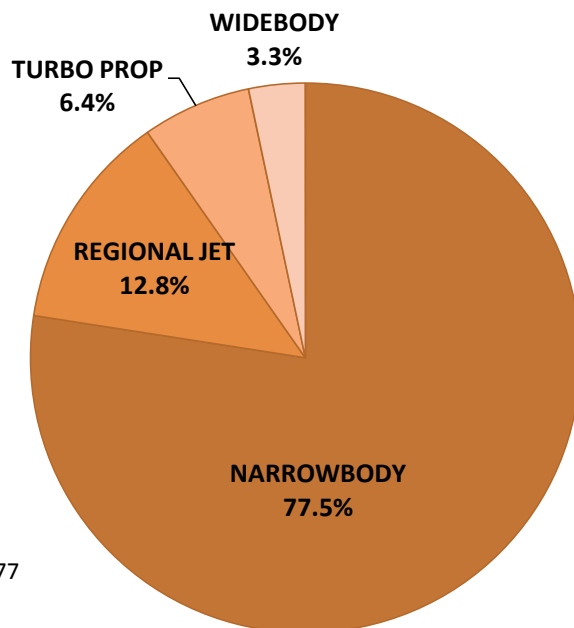
### TOP 10 COUNTRIES - Number of Daily Slots



### TOP 10 ROUTES - Number of Daily Slots



### AIRCRAFT UTILISATION



#### Aircraft Sizes

- Widebody e.g. A330, A340, B747, B767, B777
- Narrowbody e.g. A32S, B737, B757, F100
- Regional Jet e.g. ARJ, CRJ, ERJ
- Turbo Prop e.g. ATR, DH4, S20