

## START OF SEASON REPORT GENEVA SUMMER SEASON

27 MARCH - 29 OCTOBER 2016 (S16)

# 2016

KEY FIGURES	S15	S16	+/-
Cleared Airport Slots	89,892	<b>90,694</b>	0.9%
Seats (1000)	12,932	<b>13,387</b>	3.5%
Seats per Airport Slot	144	<b>148</b>	2.6%
Runway Utilisation	66.8%	<b>67.4%</b>	0.6%
Terminal Utilisation	44.0%	<b>46.6%</b>	2.6%
Number of Carriers	63	<b>64</b>	1.6%

Note: For comparison reasons S15 figures (30 season weeks) are transposed to reflect S16's 31 season weeks!

### TABLE OF CONTENTS

	Page
Management Summary	2
Overview Main Carriers	3
Runway Histograms	4
Terminal Histograms	5
Slot Shares	6
Traffic Flows, Aircraft Utilisation	7

### GLOSSARY OF TERMS

<b>Allocation</b>	The allocation of slots within declared capacity limits.
<b>Capacity Limits</b>	Limiting parameters declared by the Airport Operator used in the coordination process.
<b>Seats</b>	The number of seats based on the aircraft configuration advised by the airline.

### GUIDE TO HISTOGRAMS

The histograms show the pattern of traffic by time of day against the appropriate capacity limit. Each time period consists of seven columns representing the days-of-week, Monday through Sunday. All histograms are based on a reference week. For Summer 2016 the reference week is 12-18 September 2016.

## OVERVIEW MAIN CARRIERS

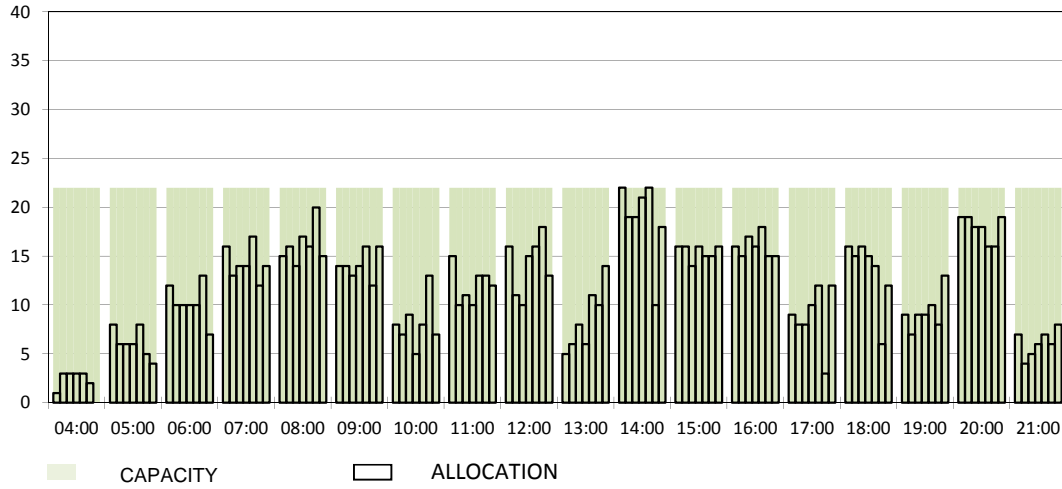
Number of average slots per week

	START OF SEASON			
	S15	S16	+/-	Share
<b>ALL CARRIERS</b>	2900	2926	0.9%	
<b>Swiss Carriers</b>	1256	1247	-0.7%	42.6%
<i>where of</i>				
EasyJet Switzerland	643	611	-5.0%	20.9%
Swiss International Air Lines	495	517	4.4%	17.7%
Darwin Airline	108	107	-0.9%	3.7%
Farnair	8	8	0.0%	0.3%
Germania Flug AG	0	2		0.1%
Edelweiss Air	2	2	0.0%	0.1%
<b>Foreign Carriers</b>	1644	1679	2.1%	57.4%
<i>where of</i>				
EasyJet UK	285	346	21.4%	11.8%
British Airways / BA CityFlyer	124	150	21.0%	5.1%
Air France / HOP	120	122	1.7%	4.2%
Lufthansa	173	111	-35.8%	3.8%
KLM	84	84	0.0%	2.9%
SN Brussels Airlines	76	73	-3.9%	2.5%
TAP Air Portugal	64	64	0.0%	2.2%
Turkish Airlines	47	51	8.5%	1.7%
Austrian Airlines	49	49	0.0%	1.7%
Iberia	43	48	11.6%	1.6%
<b>Maj. foreign Carriers</b>	1065	1098	3.1%	37.5%

SLOT RETURN			
S15	S16	+/-	Share
2925	2984	2.0%	
1278	1230	-3.8%	41.2%
665	627	-5.7%	21.0%
501	487	-2.8%	16.3%
102	105	2.9%	3.5%
8	8	0.0%	0.3%
0	2		0.1%
2	1	-50.0%	0.0%
1647	1754	6.5%	58.8%
303	356	17.5%	11.9%
125	149	19.2%	5.0%
122	122	0.0%	4.1%
171	178	4.1%	6.0%
84	84	0.0%	2.8%
76	76	0.0%	2.5%
62	64	3.2%	2.1%
53	53	0.0%	1.8%
49	49	0.0%	1.6%
43	48	11.6%	1.6%
1088	1179	8.4%	39.5%

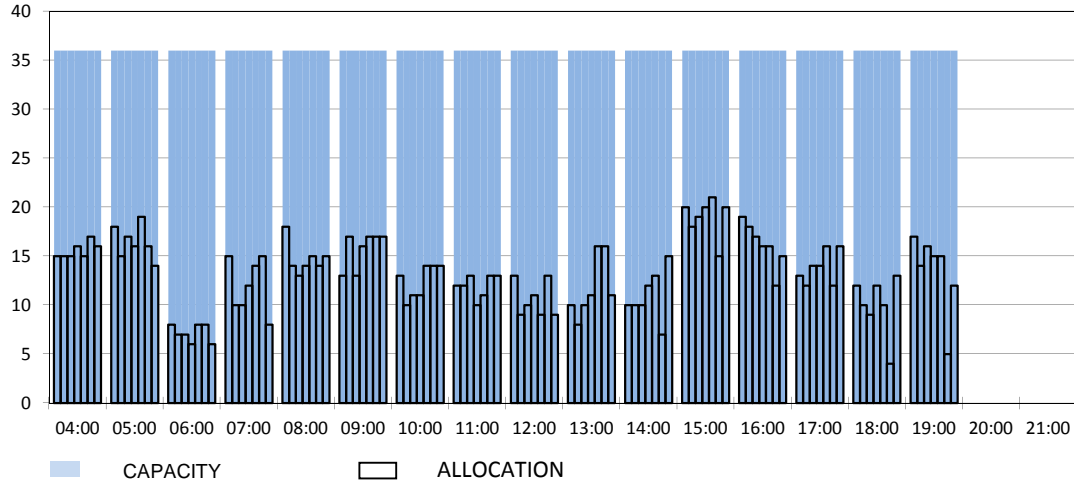
### RUNWAY MOVEMENT START OF SEASON - ARRIVALS

Reference week, movements per hour - all times UTC



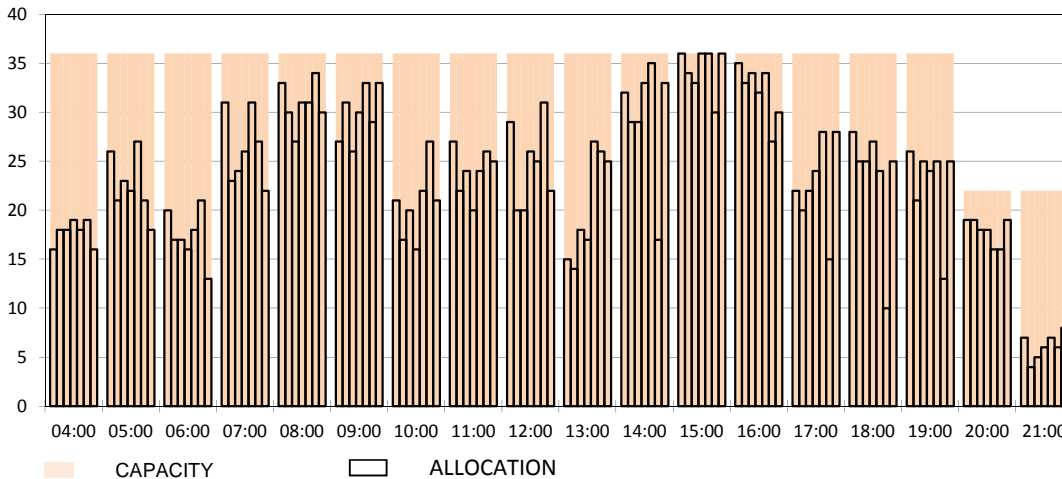
### RUNWAY MOVEMENT START OF SEASON - DEPARTURES

Reference week, movements per hour - all times UTC



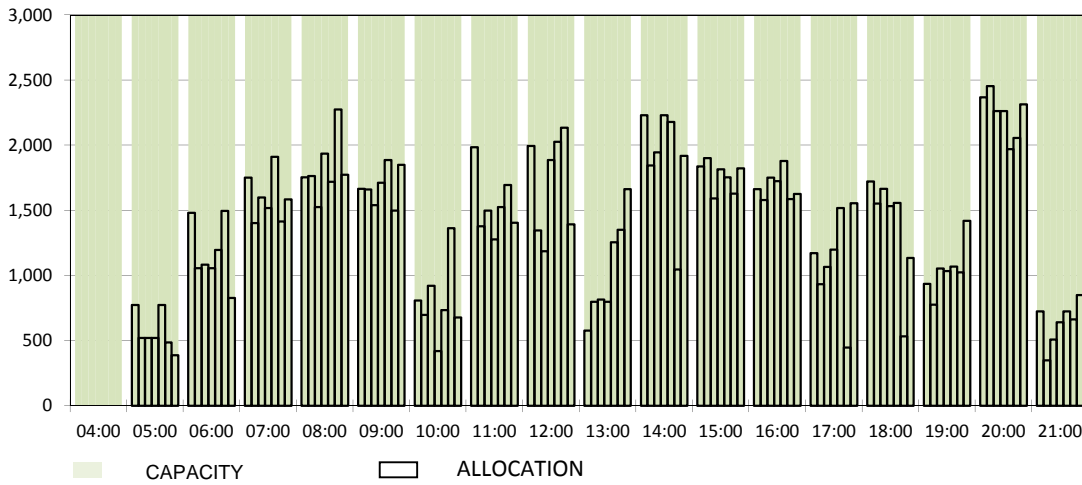
### RUNWAY MOVEMENT START OF SEASON - TOTALS

Reference week, movements per hour - all times UTC



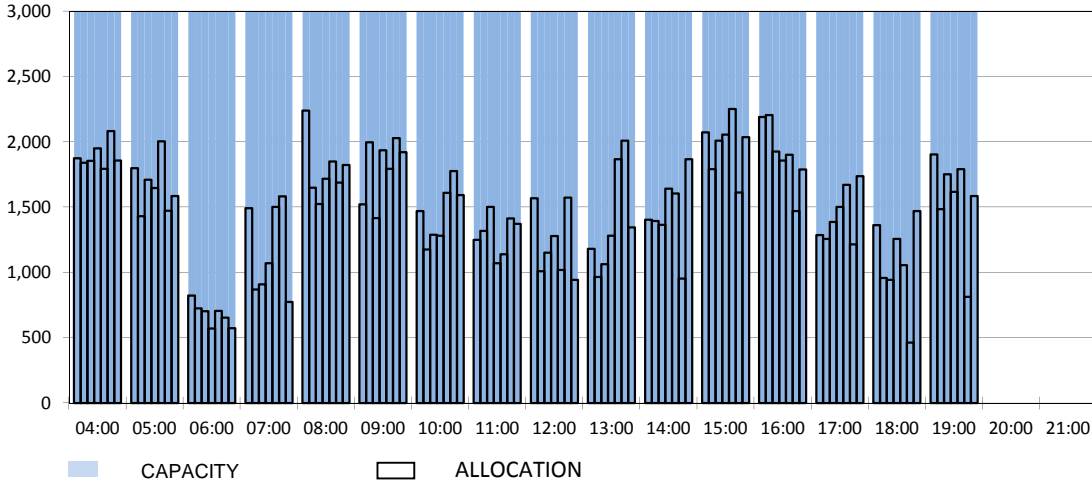
### TERMINAL START OF SEASON - ARRIVALS

Reference week, passengers per hour - all times UTC



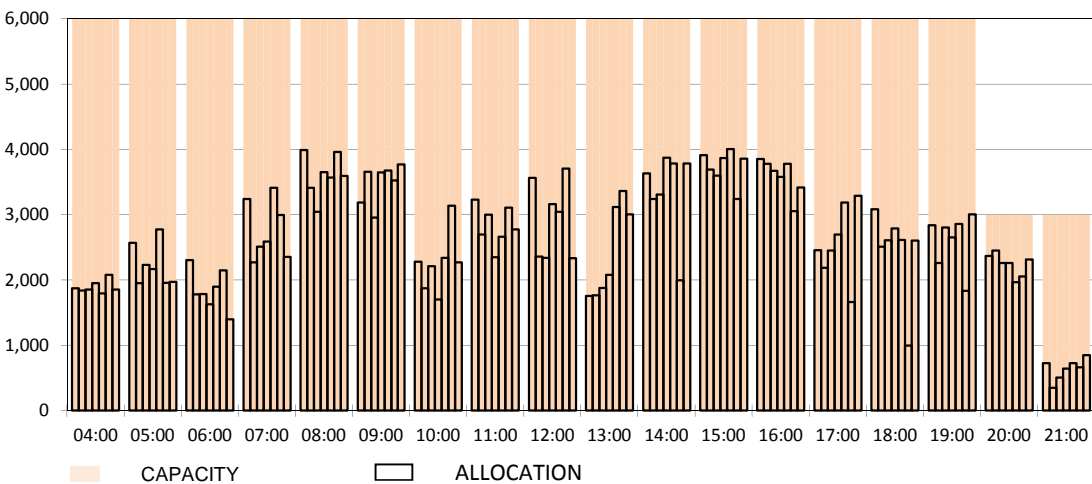
### TERMINAL START OF SEASON - DEPARTURES

Reference week, passengers per hour - all times UTC

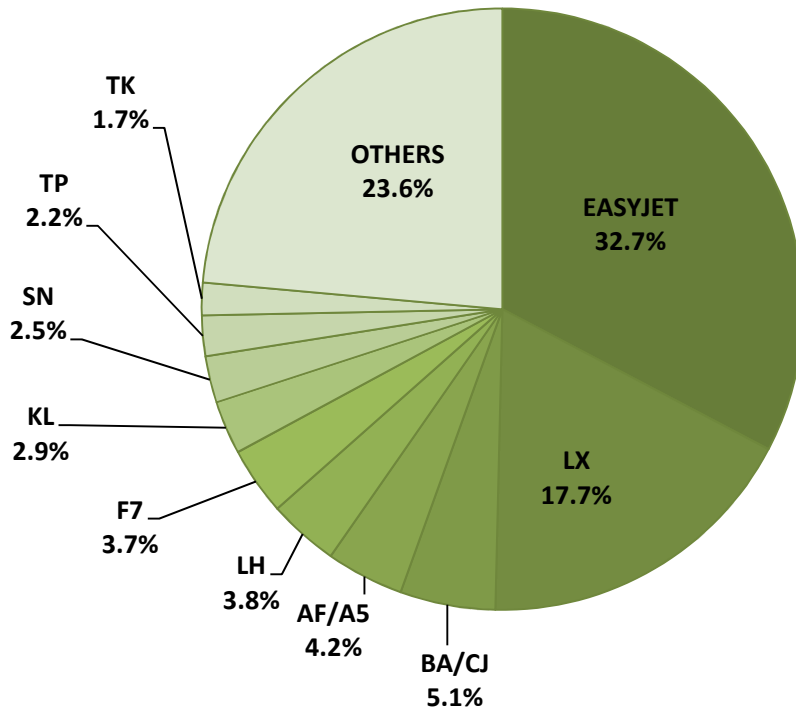


### TERMINAL START OF SEASON - TOTALS

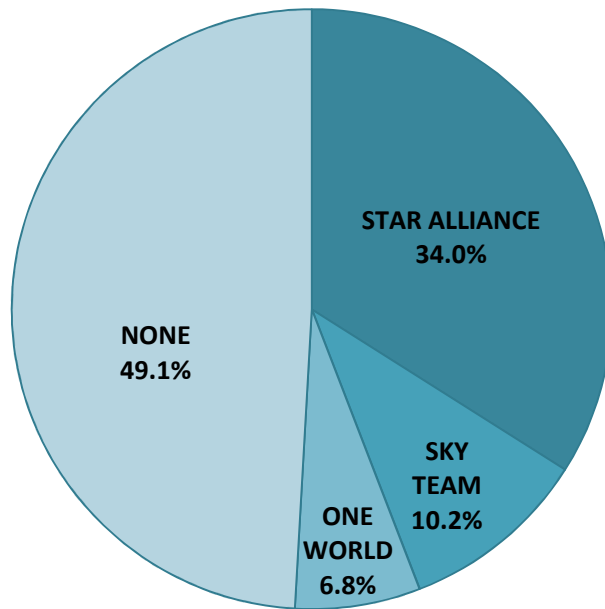
Reference week, passengers per hour - all times UTC



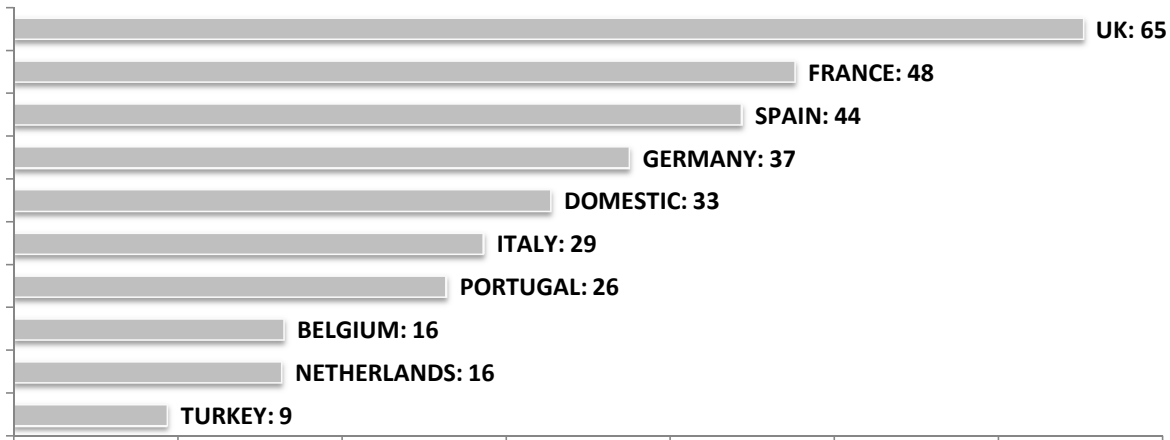
**SEASONAL SLOT SHARE - 10 TOP CARRIER**



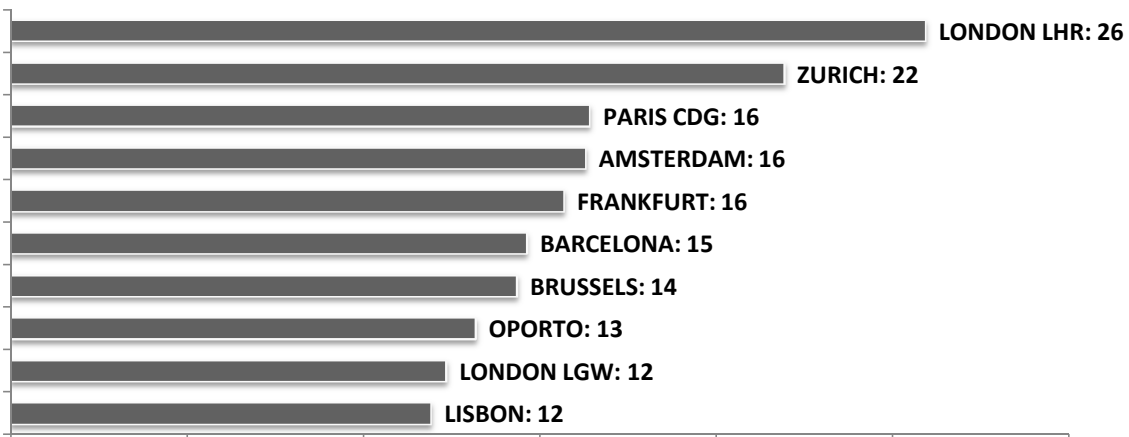
**SEASONAL SLOT SHARE - PER ALLIANCES**



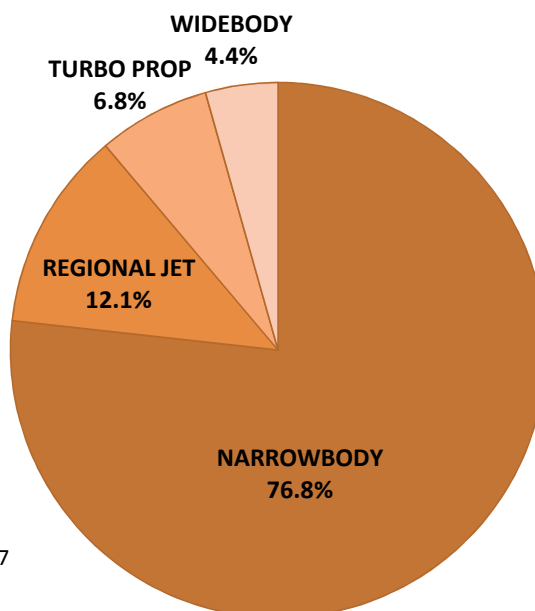
**TOP 10 COUNTRIES - Number of Daily Slots**



**TOP 10 ROUTES - Number of Daily Slots**



**AIRCRAFT UTILISATION**



**Aircraft Sizes**  
 Widebody e.g. A330, A340, B747, B767, B777  
 Narrowbody e.g. A32S, B737, B757, F100  
 Regional Jet e.g. ARJ, CRJ, ERJ  
 Turbo Prop e.g. ATR, DH4, S20