

START OF SEASON REPORT GENEVA SUMMER SEASON

26 MARCH - 28 OCTOBER 2017 (S17)

2017

KEY FIGURES	S16	S17	+/-
Cleared Airport Slots	90,694	90,631	-0.1%
Seats (1000)	13,387	14,034	4.8%
Seats per Airport Slot	148	155	4.9%
Runway Utilisation	67.4%	68.9%	1.5%
Terminal Utilisation	46.6%	48.5%	1.9%
Number of Carriers	64	63	-1.6%

TABLE OF CONTENTS

	Page
Management Summary	2
Overview Main Carriers	3
Runway Histograms	4
Terminal Histograms	5
Slot Shares	6
Traffic Flows, Aircraft Utilisation	7

GLOSSARY OF TERMS

Allocation	The allocation of slots within declared capacity limits.
Capacity Limits	Limiting parameters declared by the Airport Operator used in the coordination process.
Seats	The number of seats based on the aircraft configuration advised by the airline.

GUIDE TO HISTOGRAMS

The histograms show the pattern of traffic by time of day against the appropriate capacity limit. Each time period consists of seven columns representing the days-of-week, Monday through Sunday. All histograms are based on a reference week. For Summer 2017 the reference week is 11-17 September 2017.

OVERVIEW MAIN CARRIERS

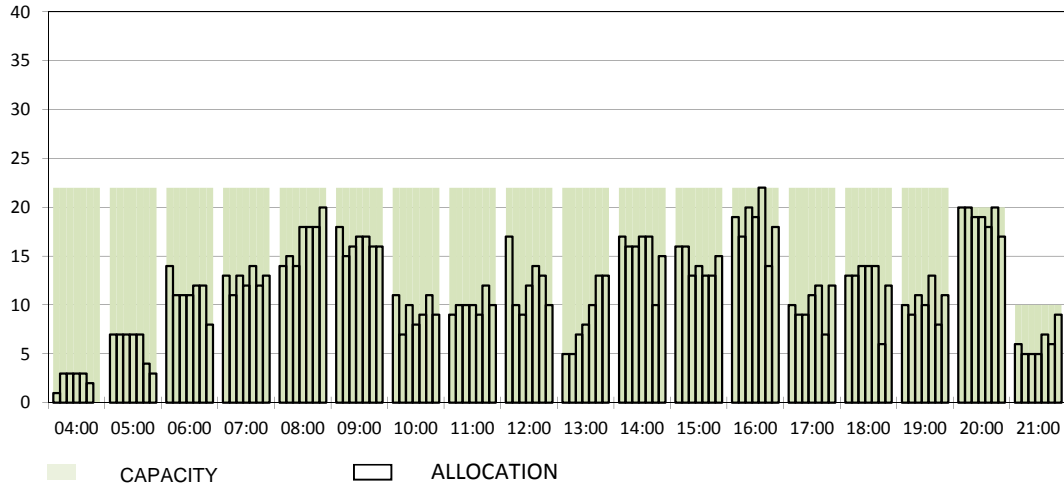
Number of average slots per week

	START OF SEASON			
	S16	S17	+/-	Share
ALL CARRIERS	2926	2924	-0.1%	
Swiss Carriers	1247	1123	-9.9%	38.4%
<i>where of</i>				
EasyJet Switzerland	611	643	5.2%	22.0%
Swiss International Air Lines	517	395	-23.6%	13.5%
Darwin Airline	107	75	-29.9%	2.6%
Farnair	8	8	0.0%	0.3%
Germania Flug AG	2	2	0.0%	0.1%
Edelweiss Air	2	0	0.0%	0.0%
Foreign Carriers	1679	1801	7.3%	61.6%
<i>where of</i>				
EasyJet UK	346	389	12.4%	13.3%
British Airways / BA CityFlyer	150	137	-8.7%	4.7%
Lufthansa	111	173	55.9%	5.9%
Air France / HOP	122	120	-1.6%	4.1%
KLM	84	84	0.0%	2.9%
SN Brussels Airlines	73	76	4.1%	2.6%
TAP Air Portugal	64	67	4.7%	2.3%
Austrian Airlines	49	49	0.0%	1.7%
Iberia	48	48	0.0%	1.6%
Turkish Airlines	51	44	-13.7%	1.5%
Maj. foreign Carriers	1098	1187	8.1%	40.6%

	SLOT RETURN			
	S16	S17	+/-	Share
	2984	2926	-1.9%	
	1230	1125	-8.5%	38.4%
	627	648	3.3%	22.1%
	487	395	-18.9%	13.5%
	105	72	-31.4%	2.5%
	8	8	0.0%	0.3%
	2	2	0.0%	0.1%
	1	0	0.0%	0.0%
	1754	1801	2.7%	61.6%
	356	397	11.5%	13.6%
	149	125	-16.1%	4.3%
	178	174	-2.2%	5.9%
	122	120	-1.6%	4.1%
	84	84	0.0%	2.9%
	76	76	0.0%	2.6%
	64	67	4.7%	2.3%
	49	49	0.0%	1.7%
	48	48	0.0%	1.6%
	53	44	-17.0%	1.5%
	1179	1184	0.4%	40.5%

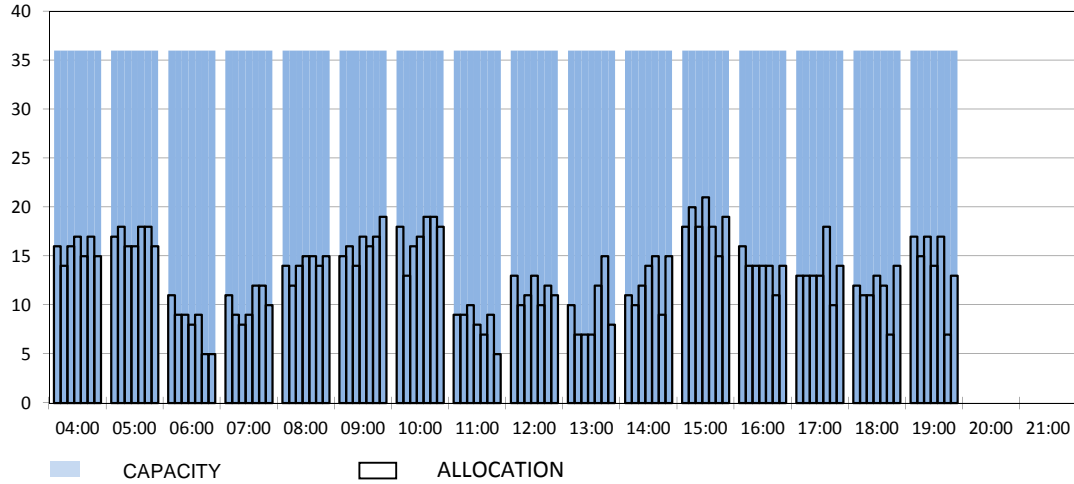
RUNWAY MOVEMENT START OF SEASON - ARRIVALS

Reference week, movements per hour - all times UTC



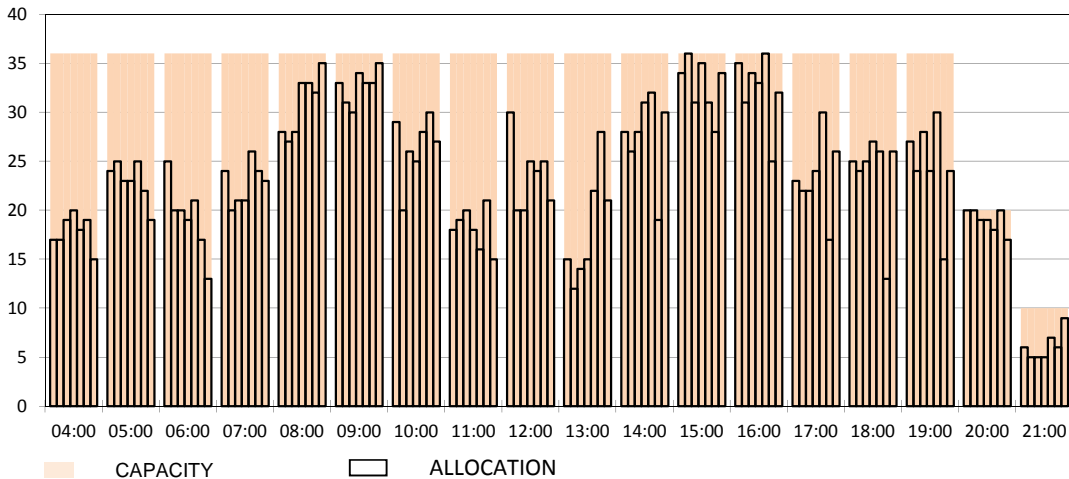
RUNWAY MOVEMENT START OF SEASON - DEPARTURES

Reference week, movements per hour - all times UTC



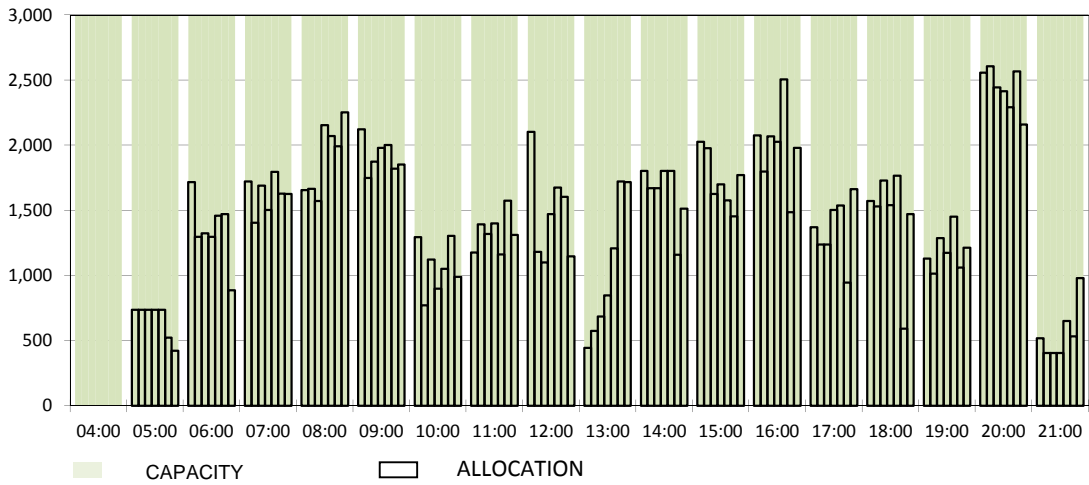
RUNWAY MOVEMENT START OF SEASON - TOTALS

Reference week, movements per hour - all times UTC



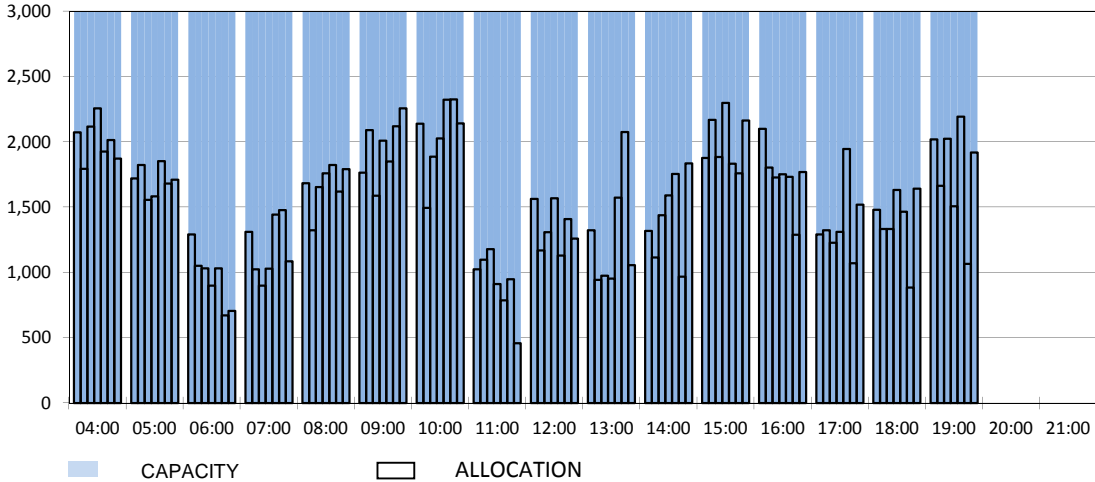
TERMINAL START OF SEASON - ARRIVALS

Reference week, passengers per hour - all times UTC



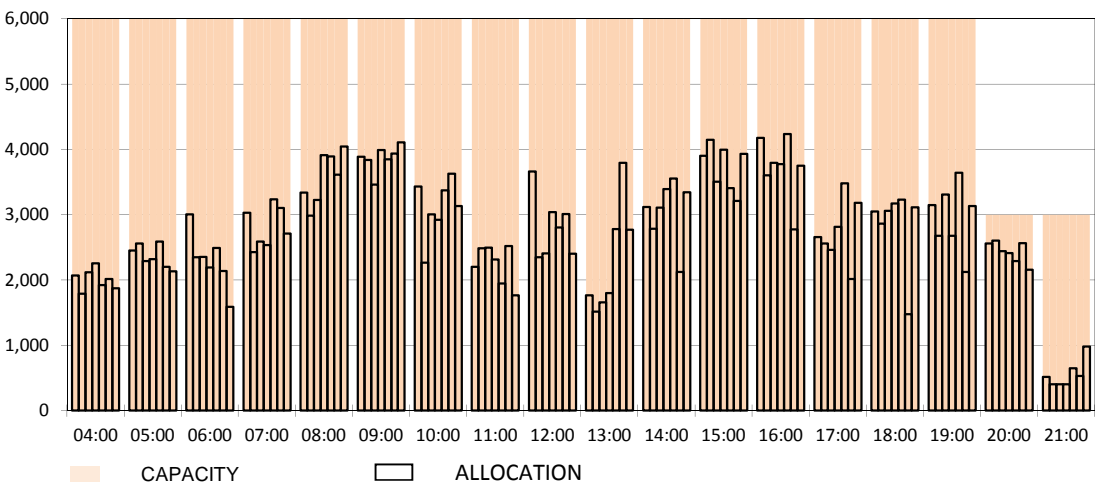
TERMINAL START OF SEASON - DEPARTURES

Reference week, passengers per hour - all times UTC

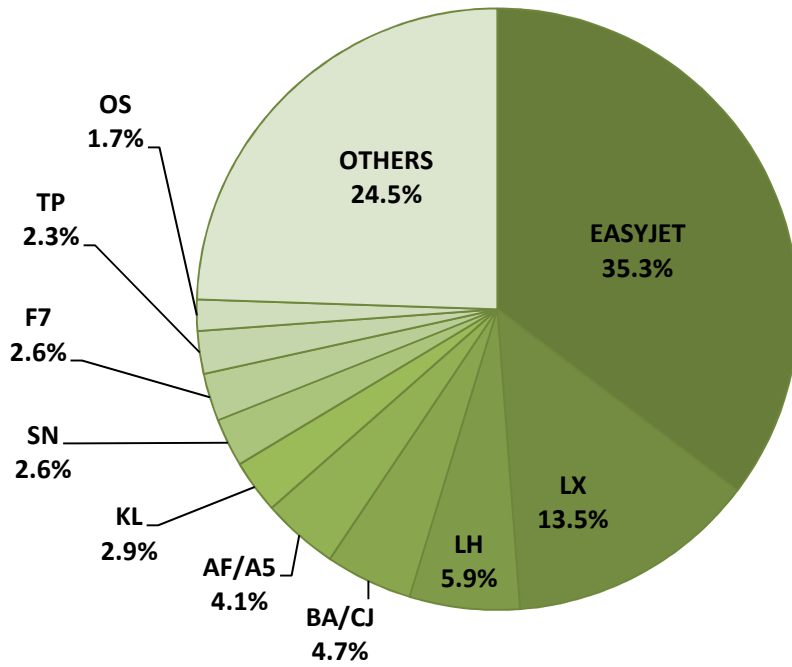


TERMINAL START OF SEASON - TOTALS

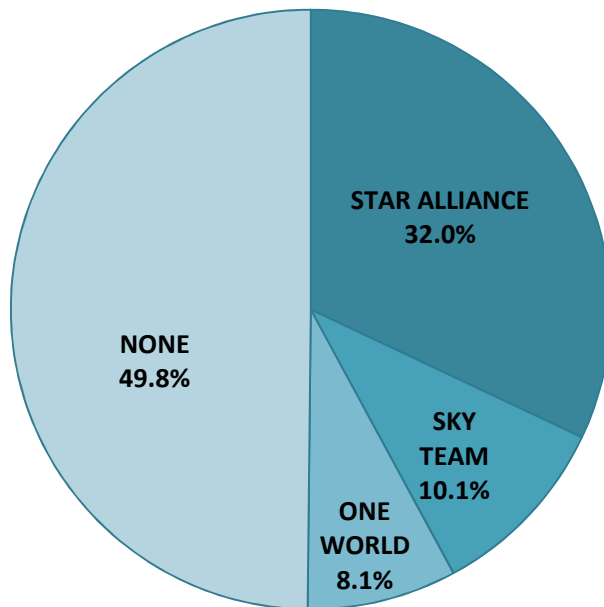
Reference week, passengers per hour - all times UTC



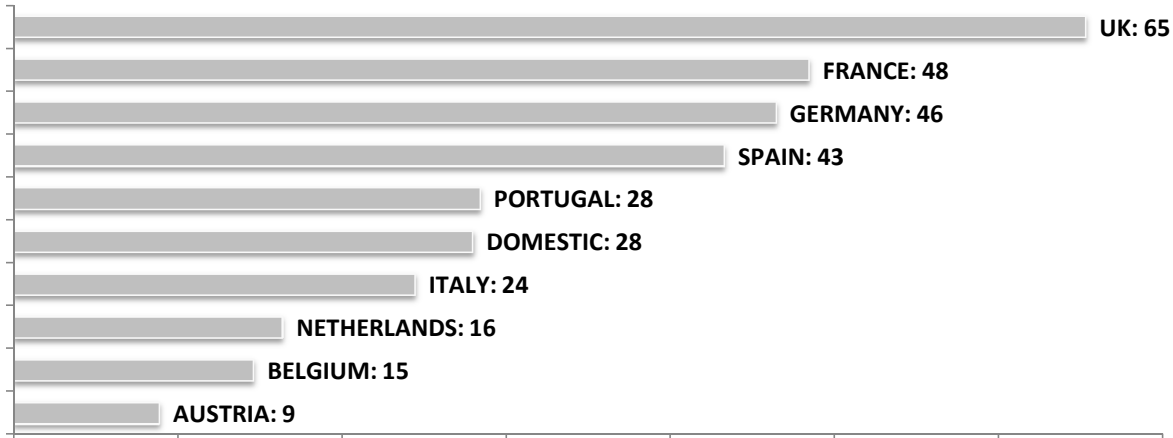
SEASONAL SLOT SHARE - 10 TOP CARRIER



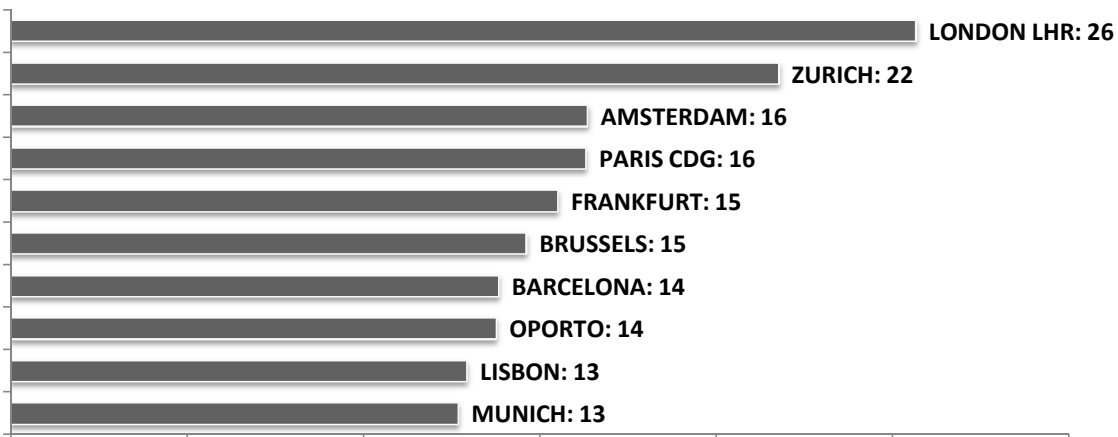
SEASONAL SLOT SHARE - PER ALLIANCES



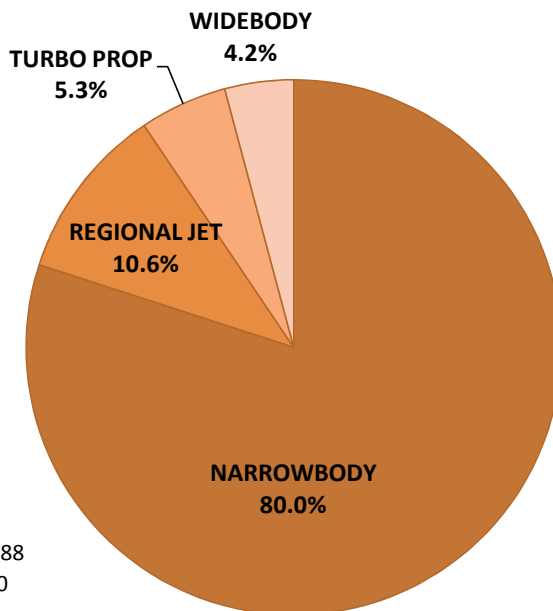
TOP 10 COUNTRIES - Number of Daily Slots



TOP 10 ROUTES - Number of Daily Slots



AIRCRAFT UTILISATION



Aircraft Sizes
 Widebody e.g. A330, B747, B767, B777, B788
 Narrowbody e.g. A32S, B737, B757, CSB, F100
 Regional Jet e.g. ARJ, CRJ, ERJ
 Turbo Prop e.g. ATR, DH4, S20