

START OF SEASON REPORT GENEVA SUMMER SEASON

25 MARCH - 27 OCTOBER 2018 (S18)

2018

KEY FIGURES	S17	S18	+/-
Airport Slots	90,631	89,531	-1.2%
Seats offered (1000)	14,034	14,078	0.3%
Seats per Airport Slot	155	157	1.5%
Runway Utilisation	68.9%	68.1%	-0.8%
Number of Carriers	63	66	+3

63

TABLE OF CONTENTS

	Page
Management Summary	2
Overview Main Carriers	3
Runway Histograms	4
Terminal Histograms	5
Slot Shares	6
Traffic Flows, Aircraft Utilisation	7

GLOSSARY OF TERMS

Allocation	The allocation of slots within declared capacity limits.
Capacity Limits	Limiting parameters declared by the Airport Operator used in the coordination process.
Seats	The number of seats based on the aircraft configuration advised by the airline.

GUIDE TO HISTOGRAMS

The histograms show the pattern of traffic by time of day against the appropriate capacity limit. Each time period consists of seven columns representing the days-of-week, Monday through Sunday. All histograms are based on a reference week. For Summer 2018 the reference week is 10-16 September 2018.

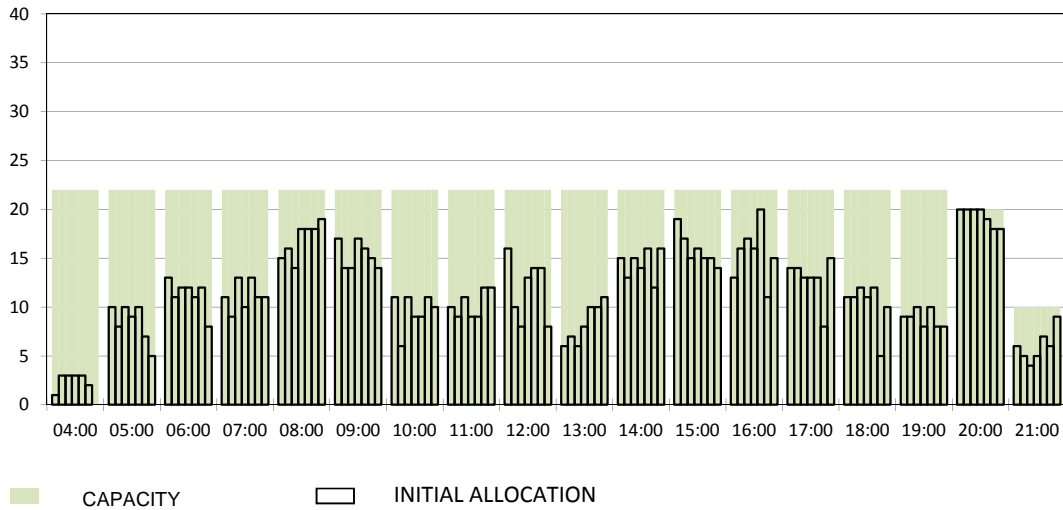
OVERVIEW MAIN CARRIERS

Number of average slots per week

	START OF SEASON				SLOT RETURN			
	S17	S18	+/-	Share	S17	S18	+/-	Share
ALL CARRIERS	2924	2888	-1.2%		2926	2897	-1.0%	
Swiss Carriers	1040	1053	1.3%	36.5%	1045	1062	1.6%	36.7%
<i>where of</i>								
EasyJet Switzerland	643	654	1.7%	22.6%	648	663	2.3%	22.9%
Swiss International Air Lines	395	397	0.5%	13.7%	395	397	0.5%	13.7%
Germania Flug AG	2	2	0.0%	0.1%	2	2	0.0%	0.1%
Foreign Carriers	1884	1835	-2.6%	63.5%	1881	1835	-2.4%	63.3%
<i>where of</i>								
EasyJet UK	389	400	2.8%	13.9%	397	412	3.8%	14.2%
Lufthansa	173	175	1.2%	6.1%	174	176	1.1%	6.1%
British Airways / BA Cityflyer	137	132	-3.6%	4.6%	125	132	5.6%	4.6%
Air France / HOP	120	119	-0.8%	4.1%	120	120	0.0%	4.1%
KLM	84	84	0.0%	2.9%	84	84	0.0%	2.9%
Brussels Airlines	76	73	-3.9%	2.5%	76	74	-2.6%	2.6%
TAP Air Portugal	67	68	1.5%	2.4%	67	68	1.5%	2.3%
Iberia	48	52	8.3%	1.8%	48	52	8.3%	1.8%
Austrian Airlines	49	50	2.0%	1.7%	49	50	2.0%	1.7%
Alitalia	38	48	26.3%	1.7%	38	42	10.5%	1.4%
Maj. foreign Carriers	1181	1201	1.7%	41.6%	1178	1210	2.7%	41.8%

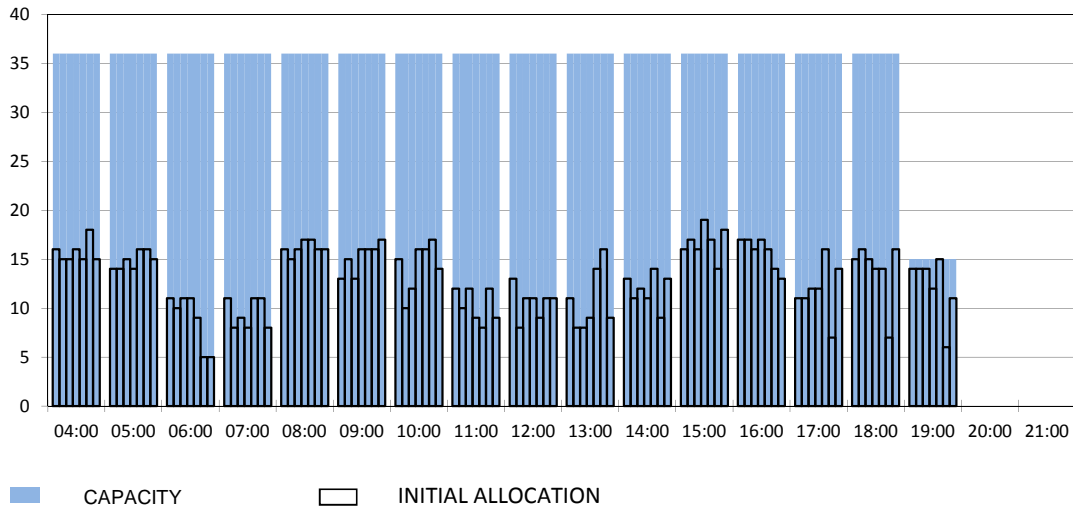
RUNWAY START OF SEASON - ARRIVALS

Reference week, movements per hour - all times UTC



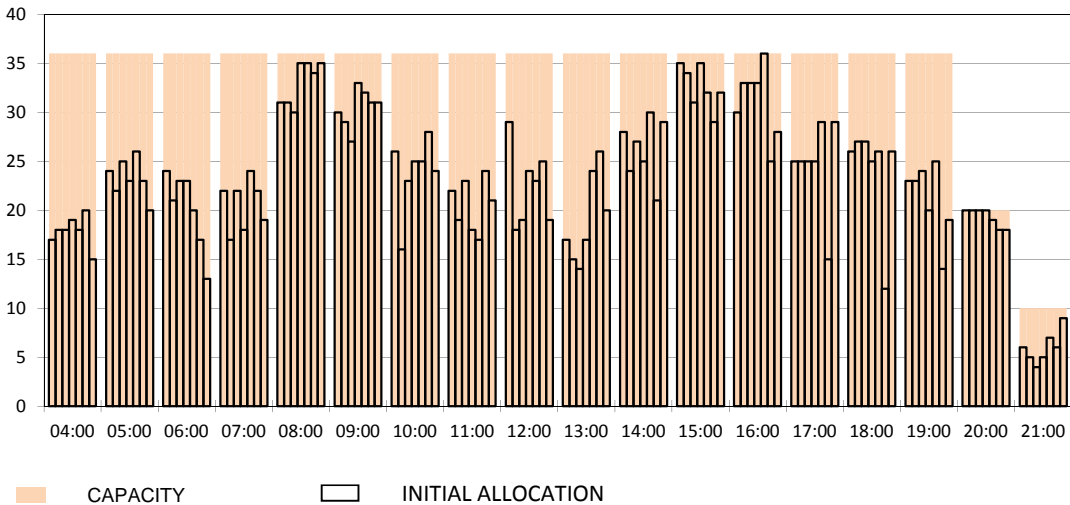
RUNWAY MOVEMENT START OF SEASON - DEPARTURES

Reference week, movements per hour - all times UTC



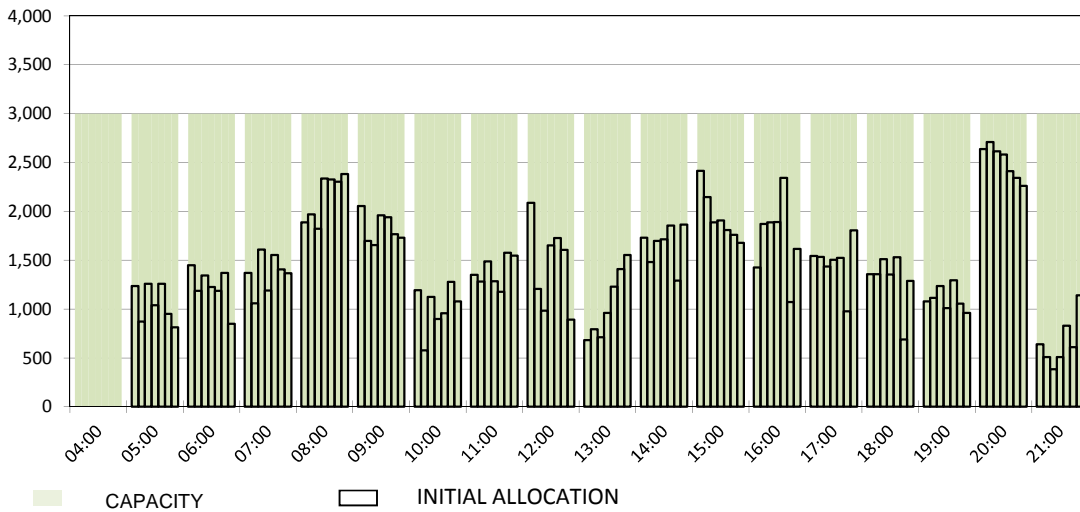
RUNWAY MOVEMENT START OF SEASON - TOTALS

Reference week, movements per hour - all times UTC



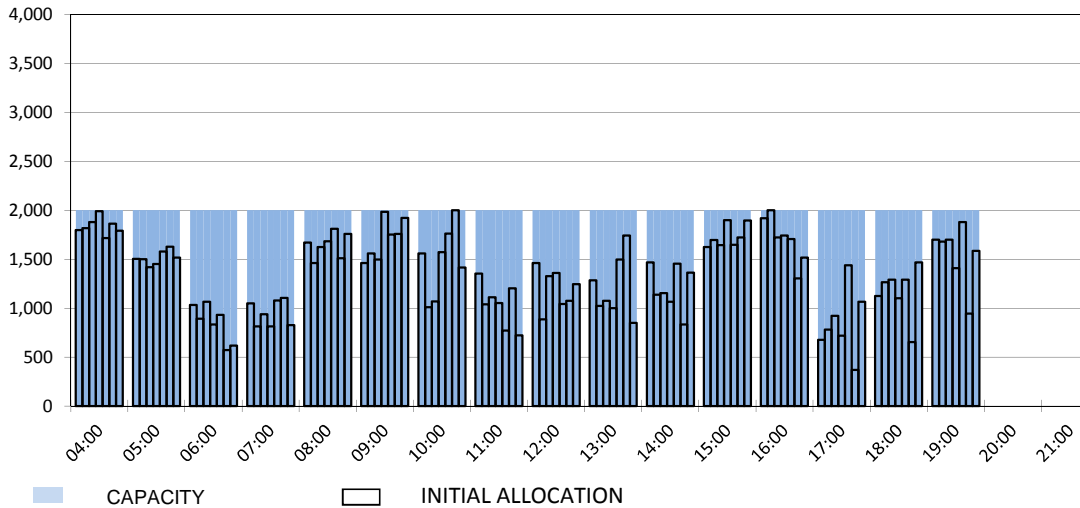
MAIN TERMINAL START OF SEASON - ARRIVALS

Reference week, movements per hour - all times UTC



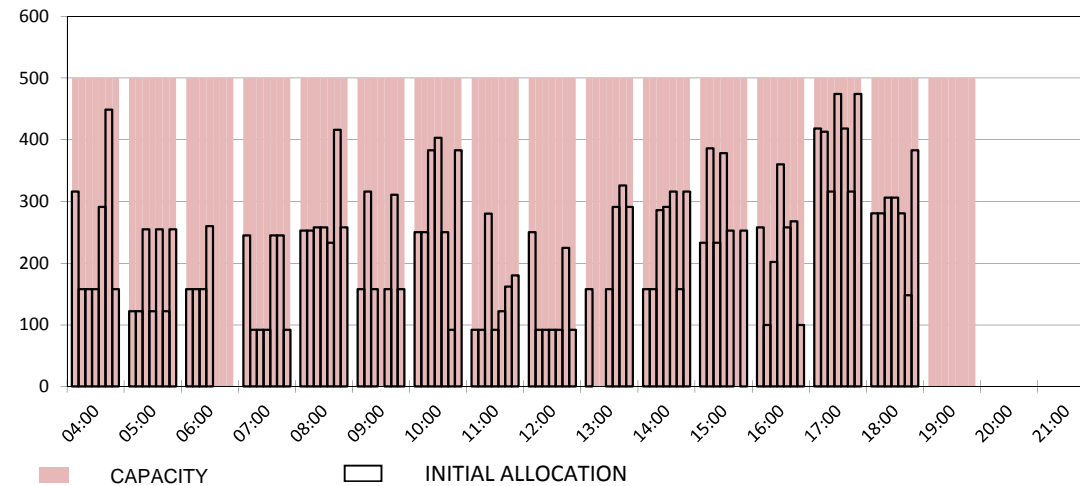
MAIN TERMINAL START OF SEASON - DEPARTURES

Reference week, movements per hour - all times UTC

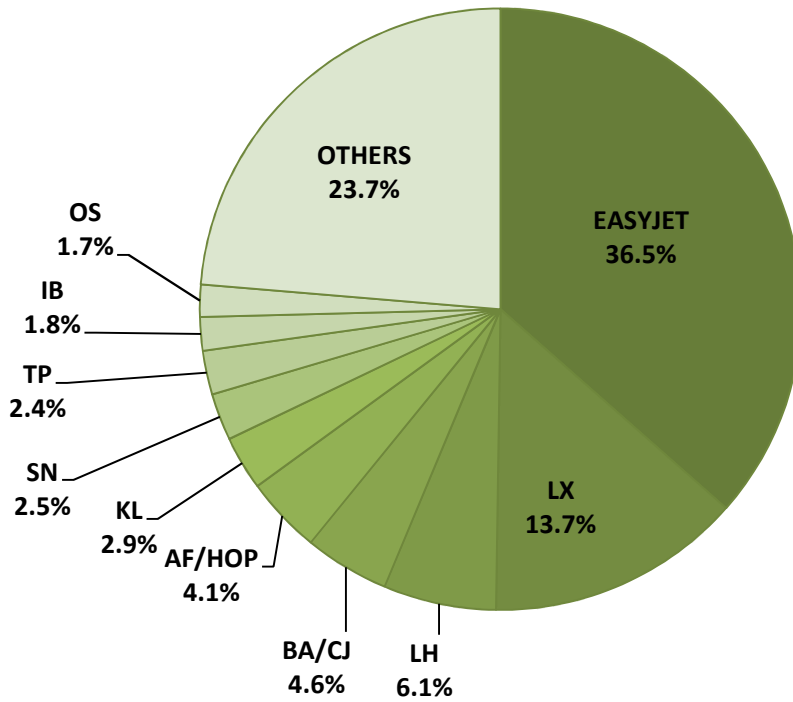


FRENCH SECTOR TERMINAL START OF SEASON - DEPARTURES

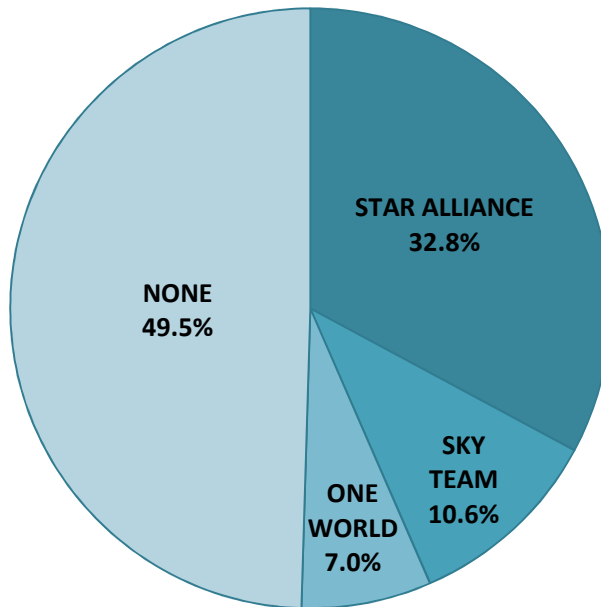
Reference week, movements per hour - all times UTC



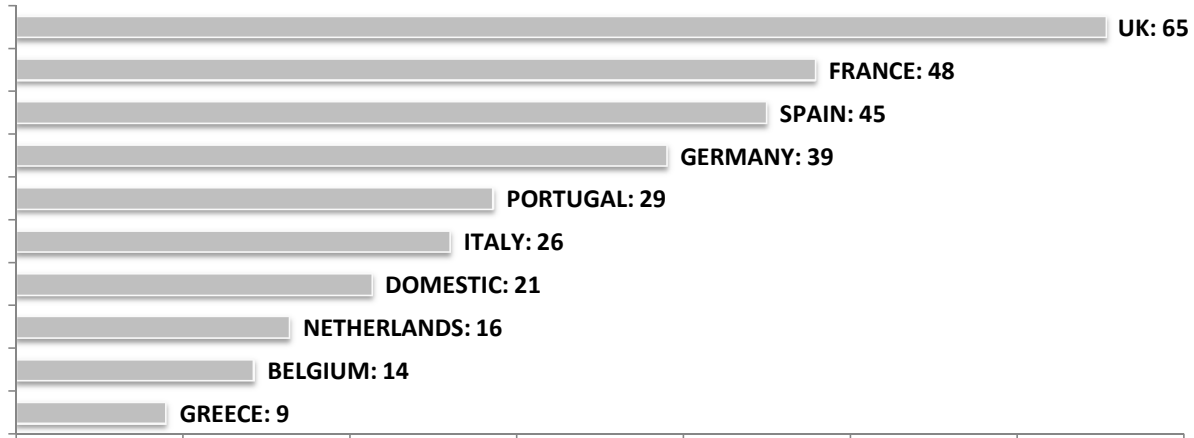
SEASONAL SLOT SHARE - 10 TOP CARRIER



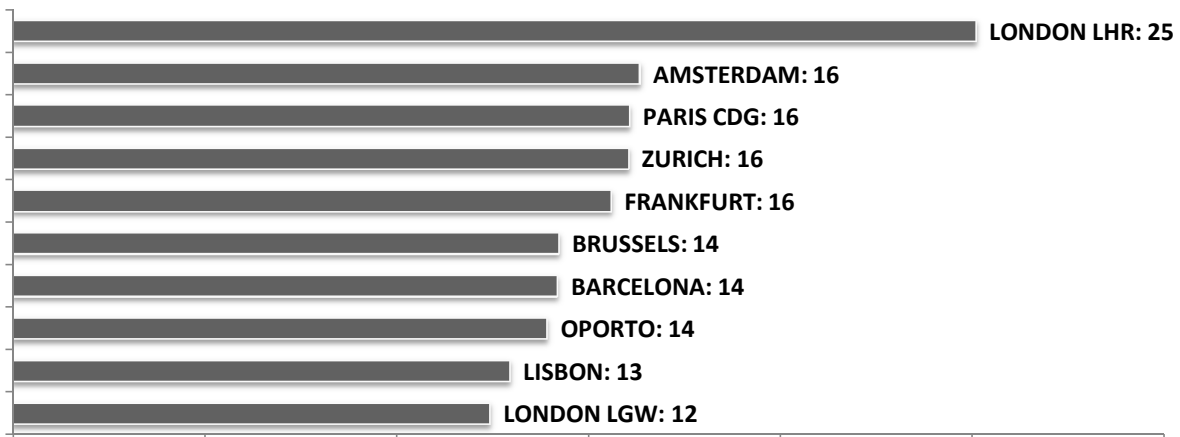
SEASONAL SLOT SHARE - PER ALLIANCES



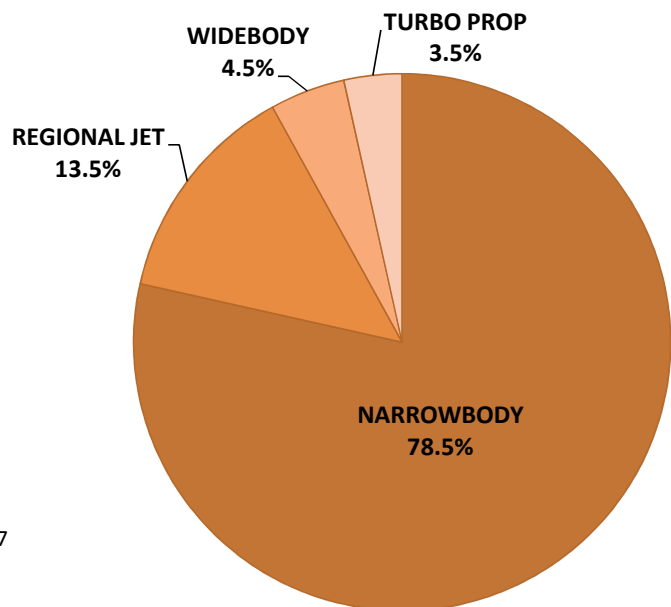
TOP 10 COUNTRIES - Number of Daily Slots



TOP 10 ROUTES - Number of Daily Slots



AIRCRAFT UTILISATION



Aircraft Sizes
 Widebody e.g. A330, B767, B777
 Narrowbody e.g. A32S, B737, BCS
 Regional Jet e.g. ARJ, CRJ, ERJ
 Turbo Prop e.g. ATR, DH4, S20