

START OF SEASON REPORT GENEVA SUMMER SEASON

31 MARCH - 26 OCTOBER 2019 (S19)

2019

KEY FIGURES	S18	S19	+/-
Airport Slots	86,643	86,417	-0.3%
Seats offered (1000)	13,624	13,869	1.8%
Seats per Airport Slot	157	160	2.2%
Runway Utilisation	68.1%	67.9%	-0.2%
Number of Carriers	66	69	+3

Note: For comparison reasons S18 figures (31 season weeks) are transposed to reflect S19's 30 season weeks!

TABLE OF CONTENTS

	Page
Management Summary	2
Overview Main Carriers	3
Runway Histograms	4
Terminal Histograms	5
Slot Shares	6
Traffic Flows, Aircraft Utilisation	7

GLOSSARY OF TERMS

Allocation	The allocation of slots within declared capacity limits.
Capacity Limits	Limiting parameters declared by the Airport Operator used in the coordination process.
Seats	The number of seats based on the aircraft configuration advised by the airline.

GUIDE TO HISTOGRAMS

The histograms show the pattern of traffic by time of day against the appropriate capacity limit. Each time period consists of seven columns representing the days-of-week, Monday through Sunday. All histograms are based on a reference week. For Summer 2019 the reference week is 09-15 September 2019.

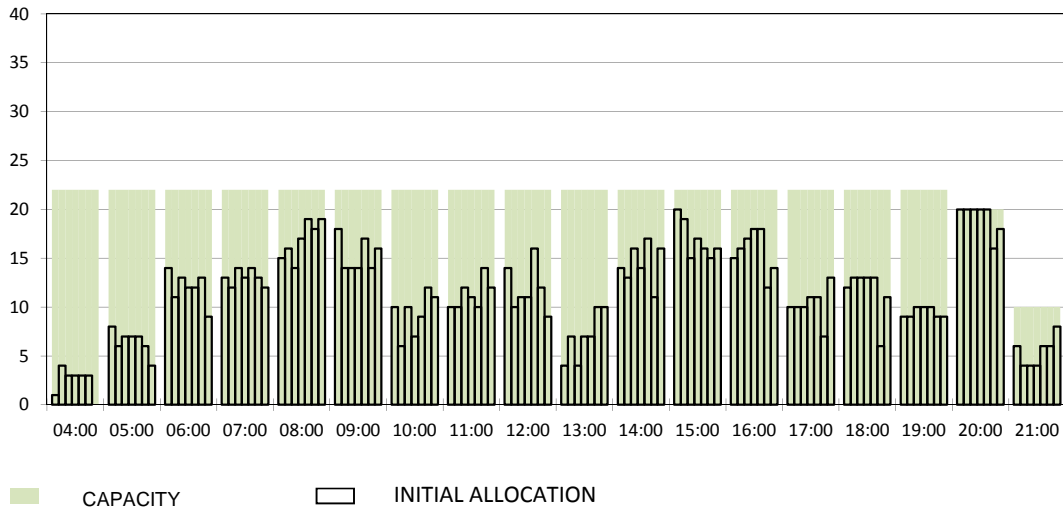
OVERVIEW MAIN CARRIERS

Number of average slots per week

	START OF SEASON				SLOT RETURN			
	S18	S19	+/-	Share	S18	S19	+/-	Share
ALL CARRIERS	2888	2880	-0.3%		2897	2917	0.7%	
Swiss Carriers	1053	1180	12.1%	41.0%	1062	1195	12.5%	41.0%
<i>where of</i>								
EasyJet Switzerland	654	654	0.0%	22.7%	663	655	-1.2%	22.5%
Swiss International Air Lines	397	524	32.0%	18.2%	397	538	35.5%	18.4%
Germania Flug AG	2	2	0.0%	0.1%	2	2	0.0%	0.1%
Foreign Carriers	1835	1700	-7.4%	59.0%	1835	1722	-6.2%	59.0%
<i>where of</i>								
EasyJet Europe & UK	400	399	-0.3%	13.9%	412	402	-2.4%	13.8%
British Airways / BA Cityflyer	132	136	3.0%	4.7%	132	137	3.8%	4.7%
Air France / HOP	119	117	-1.7%	4.1%	120	124	3.3%	4.3%
KLM	84	84	0.0%	2.9%	84	84	0.0%	2.9%
Brussels Airlines	73	74	1.4%	2.6%	74	75	1.4%	2.6%
TAP Air Portugal	68	69	1.5%	2.4%	68	69	1.5%	2.4%
Alitalia	48	55	14.6%	1.9%	42	64	52.4%	2.2%
Lufthansa	175	55	-68.6%	1.9%	176	55	-68.8%	1.9%
Iberia	52	53	1.9%	1.8%	52	53	1.9%	1.8%
Austrian Airlines	50	50	0.0%	1.7%	50	50	0.0%	1.7%
Maj. foreign Carriers	1201	1092	-9.1%	37.9%	1210	1113	-8.0%	38.2%

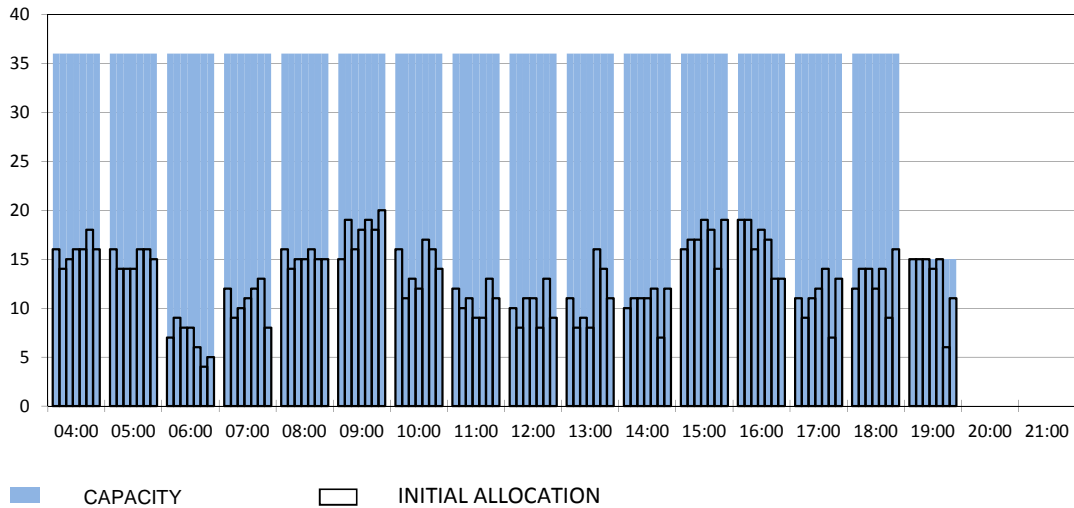
RUNWAY START OF SEASON - ARRIVALS

Reference week, movements per hour - all times UTC



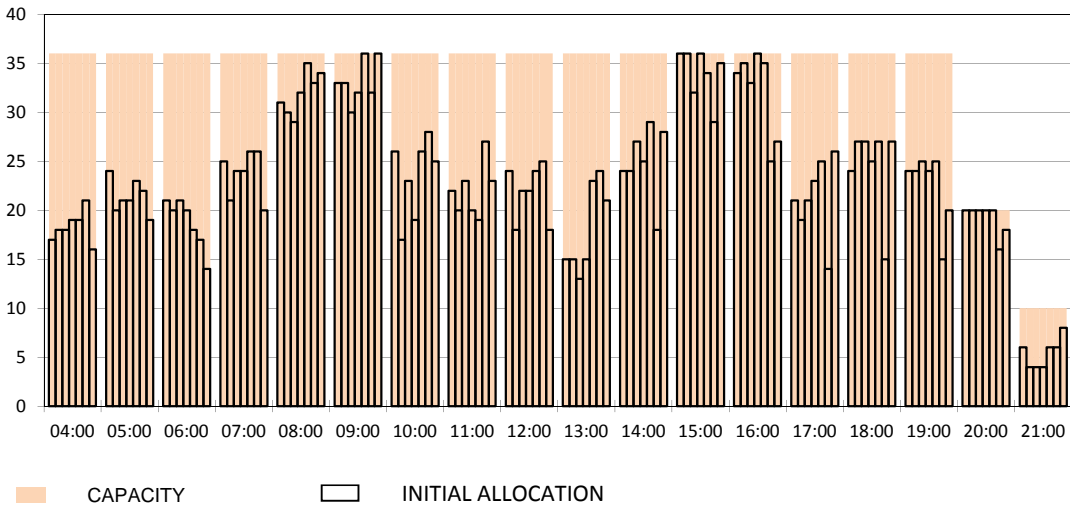
RUNWAY MOVEMENT START OF SEASON - DEPARTURES

Reference week, movements per hour - all times UTC



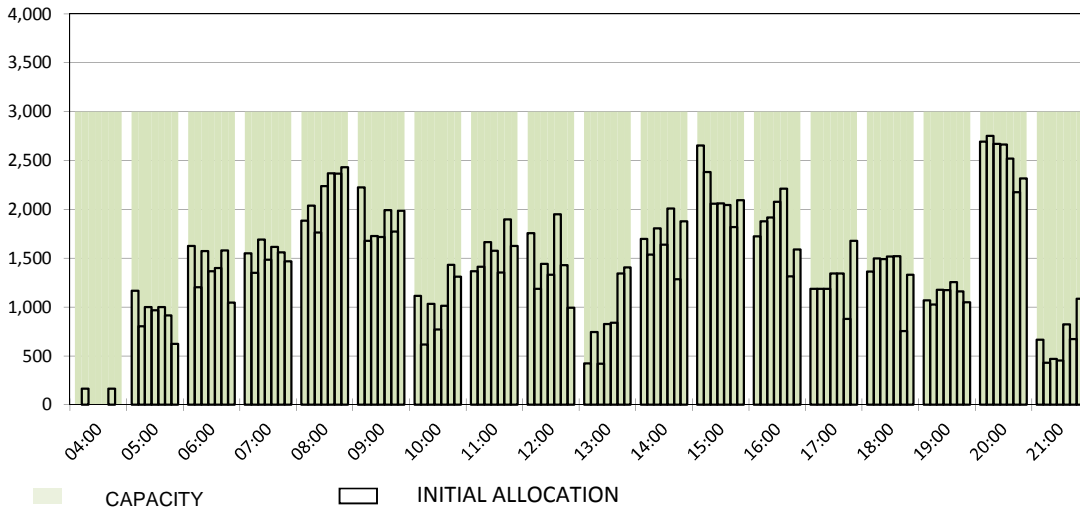
RUNWAY MOVEMENT START OF SEASON - TOTALS

Reference week, movements per hour - all times UTC



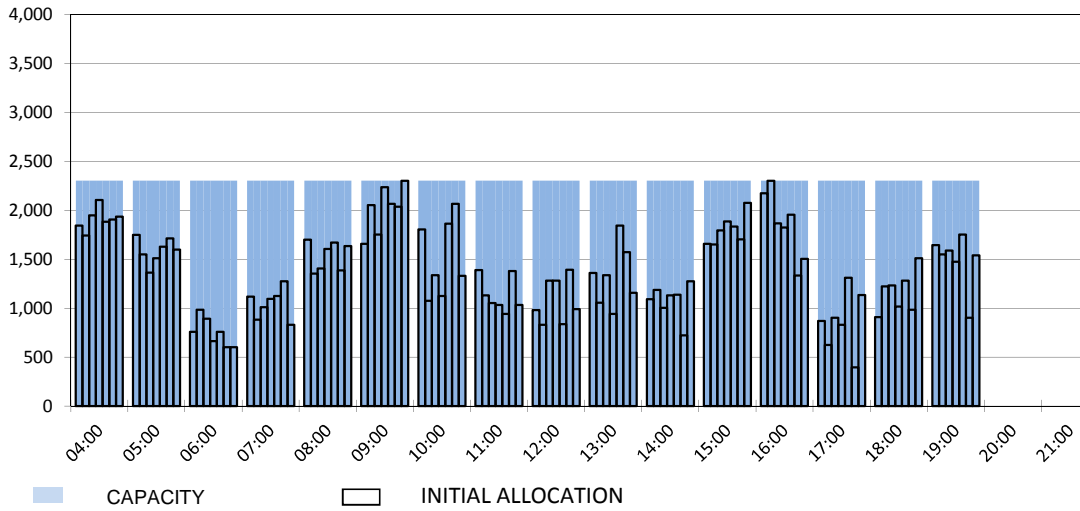
MAIN TERMINAL START OF SEASON - ARRIVALS

Reference week, movements per hour - all times UTC



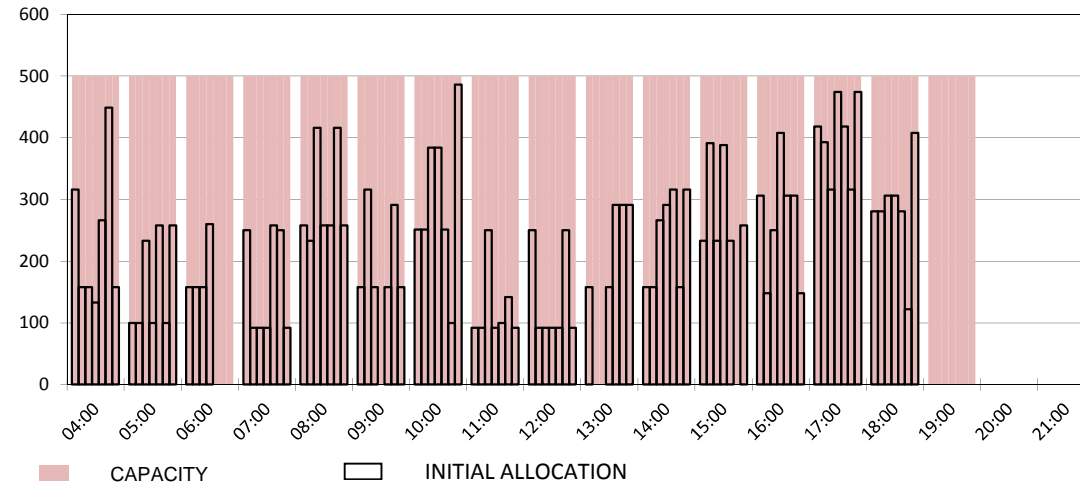
MAIN TERMINAL START OF SEASON - DEPARTURES

Reference week, movements per hour - all times UTC

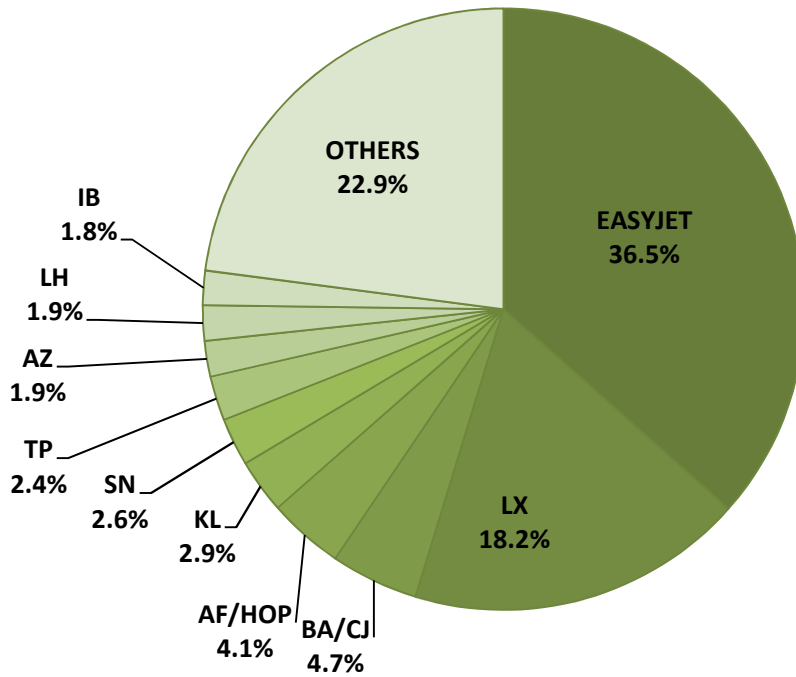


FRENCH SECTOR TERMINAL START OF SEASON - DEPARTURES

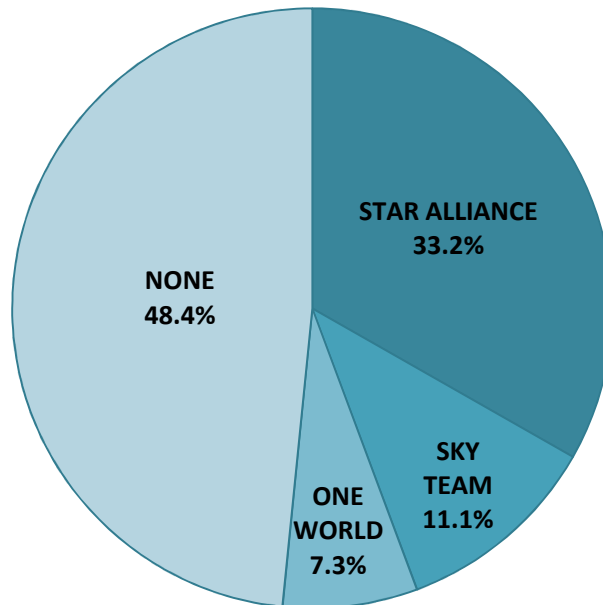
Reference week, movements per hour - all times UTC



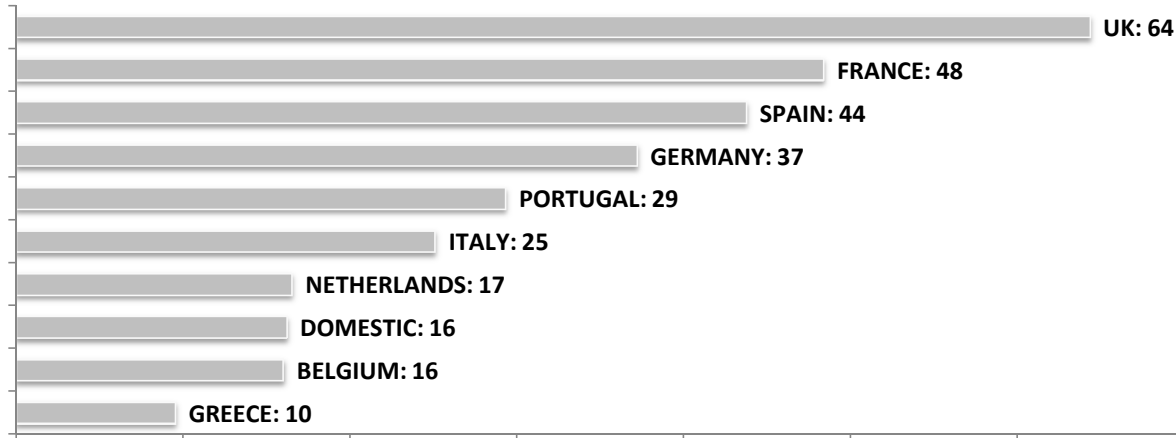
SEASONAL SLOT SHARE - 10 TOP CARRIER



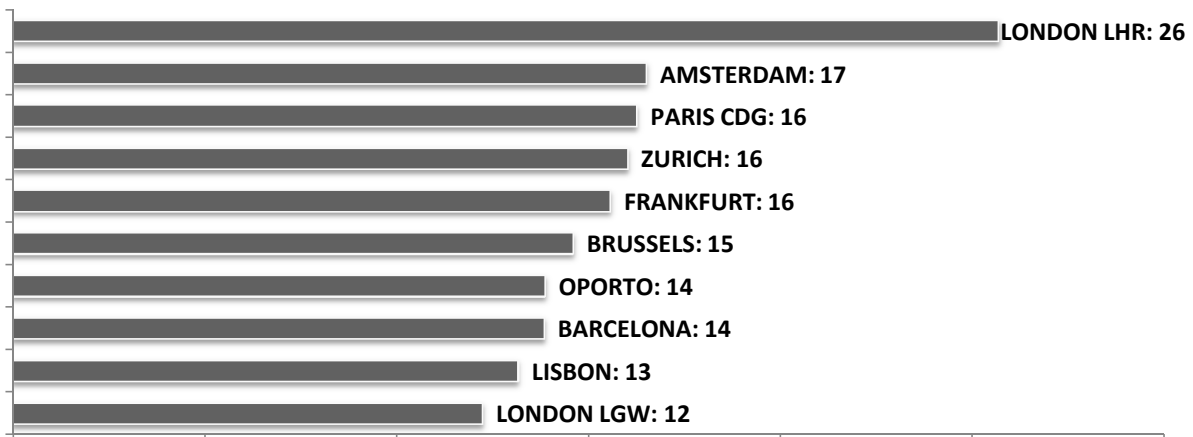
SEASONAL SLOT SHARE - PER ALLIANCES



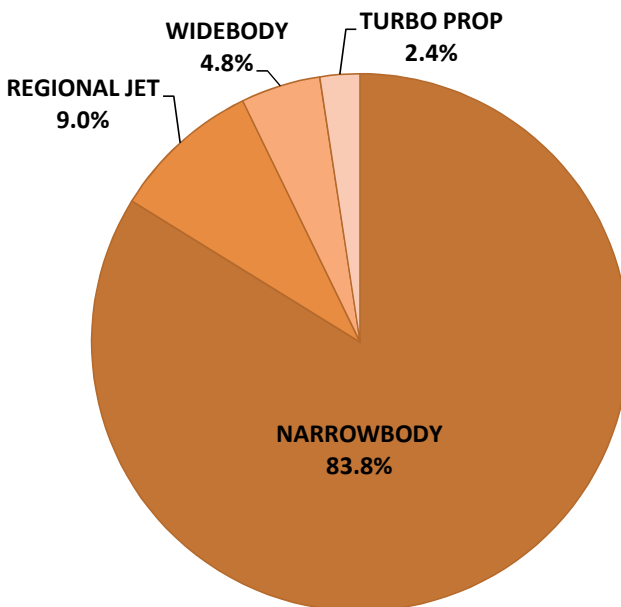
TOP 10 COUNTRIES - Number of Daily Slots



TOP 10 ROUTES - Number of Daily Slots



AIRCRAFT UTILISATION



Aircraft Sizes
 Widebody e.g. A330, B767, B777
 Narrowbody e.g. A32S, B737, BCS
 Regional Jet e.g. ARJ, CRJ, ERJ
 Turbo Prop e.g. ATR, DH4, S20