

START OF SEASON REPORT GENEVA WINTER SEASON

26 OCTOBER 2014 - 28 MARCH 2015 (W14)

2014

KEY FIGURES	W13	W14	+/-
Cleared Airport Slots	59,952	61,439	2.5%
Seats (1000)	8,595	8,806	2.5%
Seats per Airport Slot	143	143	0.0%
Runway Utilisation Days 1-5	64.1%	65.0%	0.9%
Runway Utilisation Day 6	87.4%	87.4%	0.0%
Runway Utilisation Day 7	78.7%	80.5%	1.8%
Number of Carriers	69	64	-7.2%

TABLE OF CONTENTS

	Page
Management Summary	2
Overview Main Carriers	3
Runway Histograms	4
Terminal Histograms	5
Slot Shares	6
Traffic Flows, Aircraft Utilisation	7

GLOSSARY OF TERMS

Allocation	The allocation of slots within declared capacity limits.
Capacity Limits	Limiting parameters declared by the Airport Operator used in the coordination process.
Seats	The number of seats based on the aircraft configuration advised by the airline.

GUIDE TO HISTOGRAMS

The histograms show the pattern of traffic by time of day against the appropriate capacity limit. Each time period consists of seven columns representing the days-of-week, Monday through Sunday. All histograms are based on a reference week. For Winter 2014 the reference week is 9-15 February 2015.

OVERVIEW MAIN CARRIERS

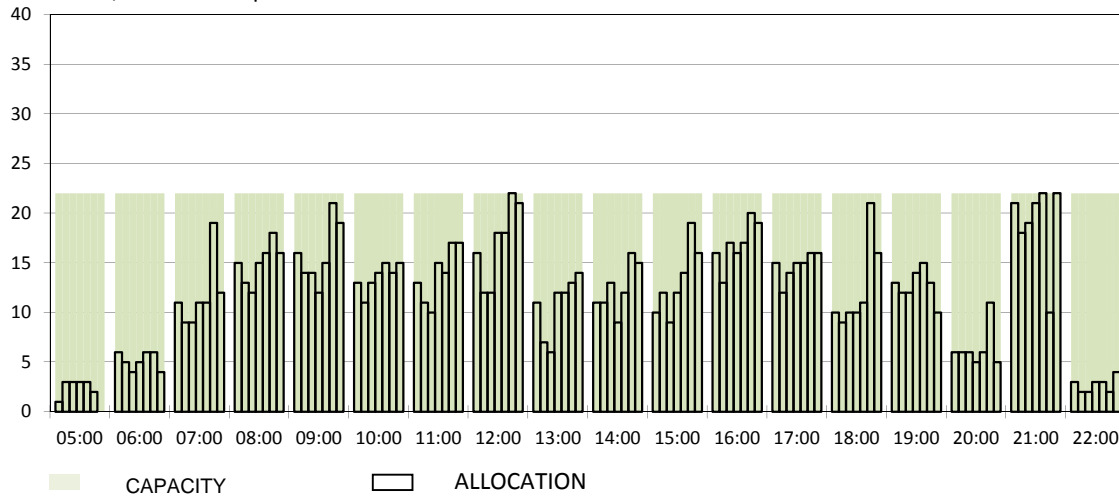
Number of average slots per week

	START OF SEASON			
	W13	W14	+/-	Share
ALL CARRIERS	2725	2793	2.5%	
Swiss Carriers	1028	1097	6.7%	39.3%
<i>where of</i>				
EasyJet Switzerland	536	509	-5.0%	18.2%
Swiss International Air Lines	395	417	5.6%	14.9%
Darwin Airline	81	163	101.2%	5.8%
Farnair	8	8	0.0%	0.3%
Helvetic	4	0	-100.0%	0.0%
Edelweiss Air	4	0	-100.0%	0.0%
Foreign Carriers	1697	1696	-0.1%	60.7%
<i>where of</i>				
EasyJet UK	285	341	19.6%	12.2%
Lufthansa / Germanwings	242	204	-15.7%	7.3%
British Airways / BA CityFlyer	162	164	1.2%	5.9%
Air France / HOP	117	120	2.6%	4.3%
Brussels Airlines	88	88	0.0%	3.2%
KLM	83	83	0.0%	3.0%
TAP Air Portugal	59	59	0.0%	2.1%
Austrian Airlines	51	50	-2.0%	1.8%
SAS	47	44	-6.4%	1.6%
Turkish Airlines	43	42	-2.3%	1.5%
Maj. foreign Carriers	1177	1195	1.5%	42.8%

	SLOT RETURN			
	W13	W14	+/-	Share
	2748	2839	3.3%	
	1051	1109	5.5%	39.1%
	533	519	-2.6%	18.3%
	407	419	2.9%	14.8%
	93	163	75.3%	5.7%
	8	8	0.0%	0.3%
	6	0	-100.0%	0.0%
	4	0	-100.0%	0.0%
	1697	1730	1.9%	60.9%
	284	347	22.2%	12.2%
	242	204	-15.7%	7.2%
	165	179	8.5%	6.3%
	118	122	3.4%	4.3%
	87	88	1.1%	3.1%
	84	83	-1.2%	2.9%
	59	59	0.0%	2.1%
	51	50	-2.0%	1.8%
	47	45	-4.3%	1.6%
	42	42	0.0%	1.5%
	1179	1219	3.4%	42.9%

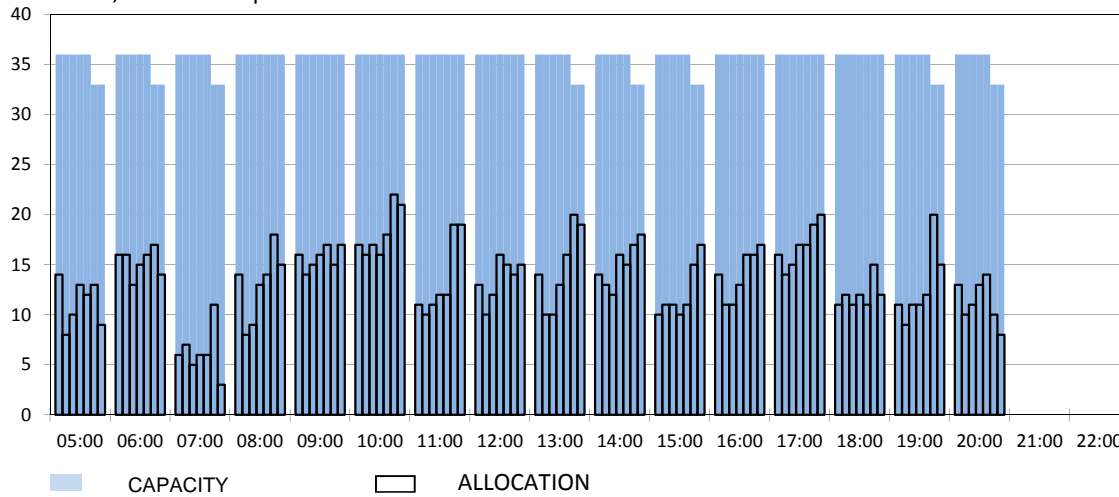
RUNWAY MOVEMENT START OF SEASON - ARRIVALS

Reference week, movements per hour - all times UTC



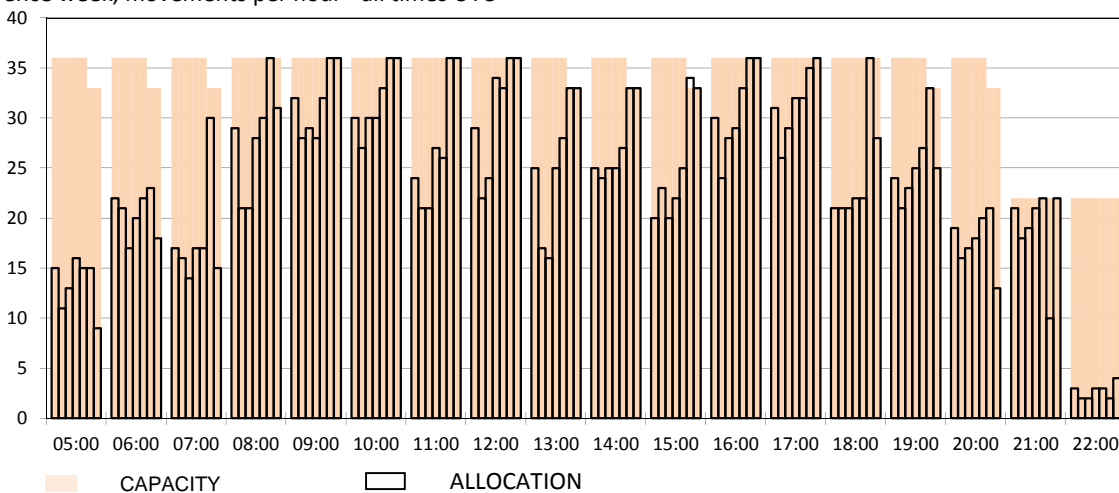
RUNWAY MOVEMENT START OF SEASON - DEPARTURES

Reference week, movements per hour - all times UTC



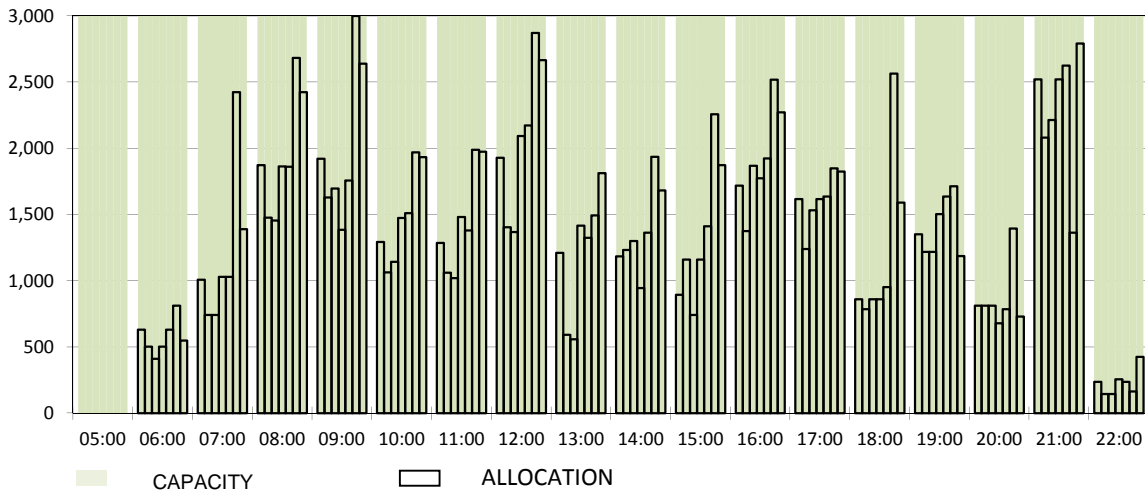
RUNWAY MOVEMENT START OF SEASON - TOTALS

Reference week, movements per hour - all times UTC



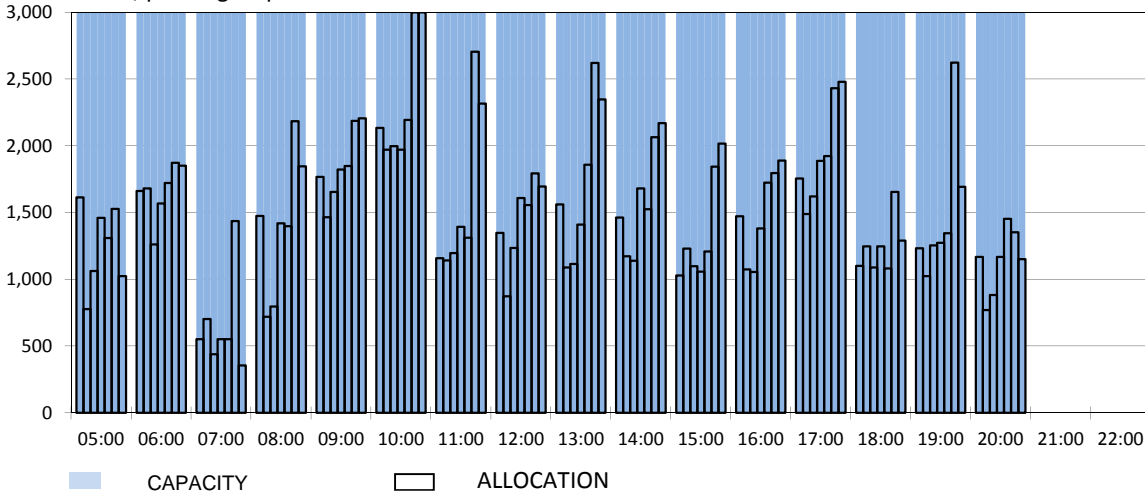
TERMINAL START OF SEASON - ARRIVALS

Reference week, passengers per hour - all times UTC



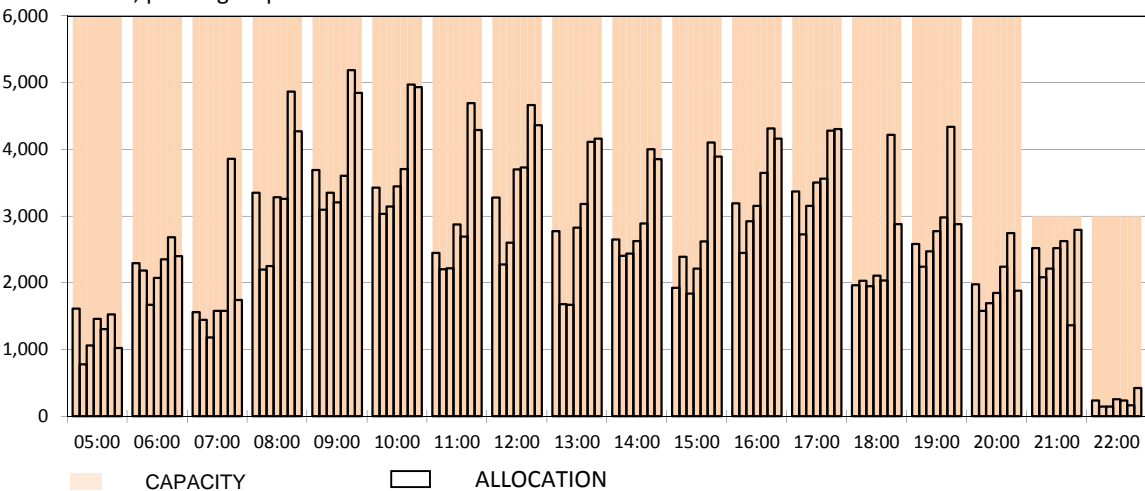
TERMINAL START OF SEASON - DEPARTURES

Reference week, passengers per hour - all times UTC

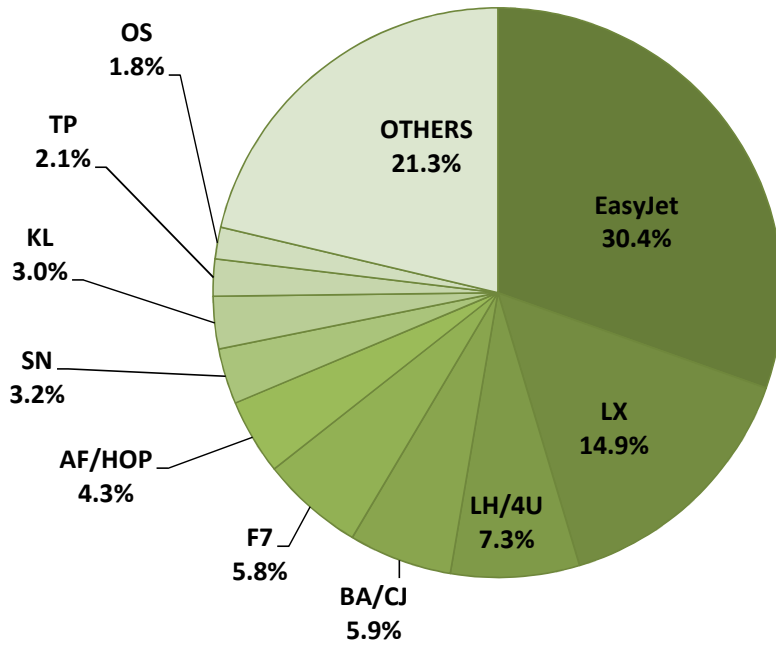


TERMINAL START OF SEASON - TOTALS

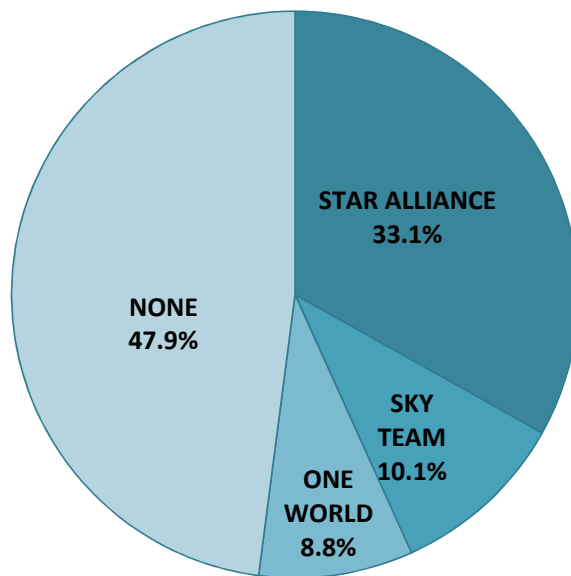
Reference week, passengers per hour - all times UTC



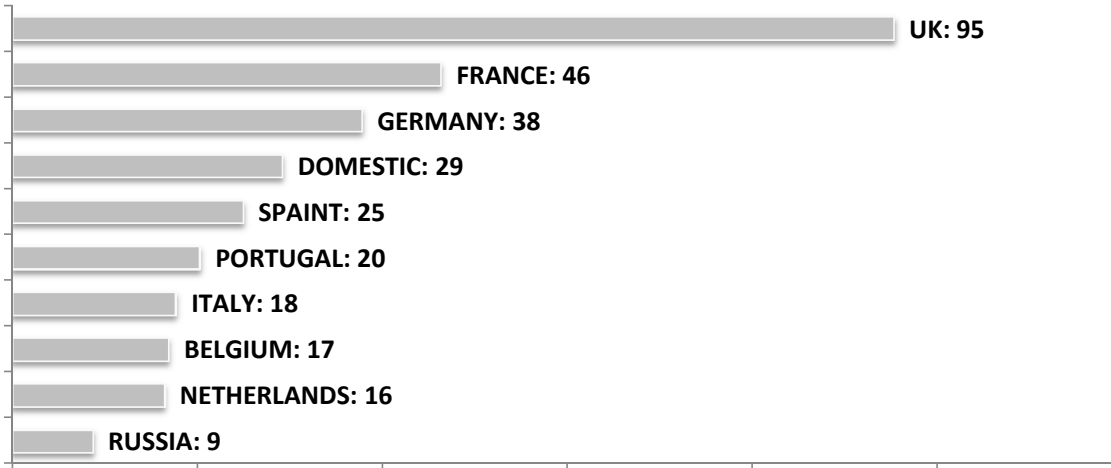
SEASONAL SLOT SHARE - 10 TOP CARRIER



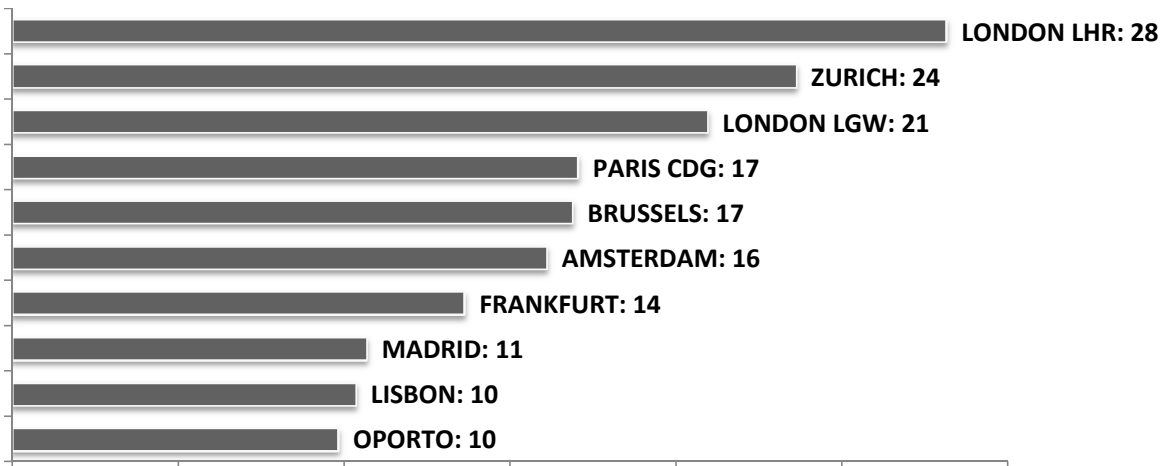
SEASONAL SLOT SHARE - PER ALLIANCES



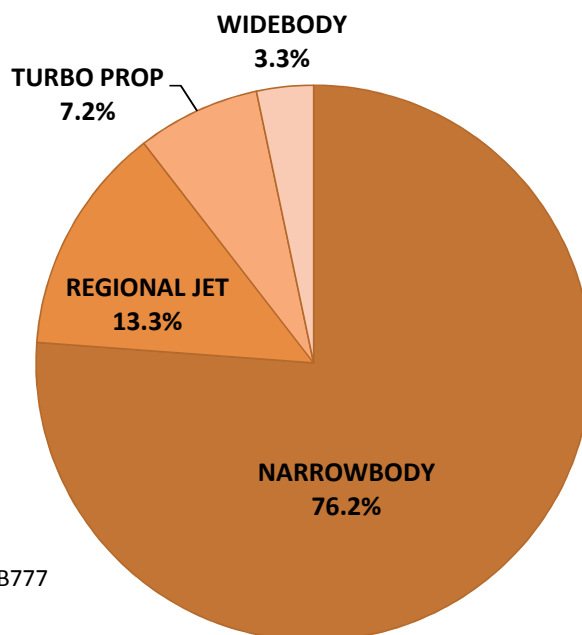
TOP 10 COUNTRIES - Number of Daily Slots



TOP 10 ROUTES - Number of Daily Slots



AIRCRAFT UTILISATION



Aircraft Sizes

- Widebody e.g. A330, A340, B747, B767, B777
- Narrowbody e.g. A32S, B737, B757, F100
- Regional Jet e.g. ARJ, CRJ, ERJ
- Turbo Prop e.g. ATR, DH4, S20