

## START OF SEASON REPORT GENEVA WINTER SEASON

25 OCTOBER 2015 - 26 MARCH 2016 (W15)

# 2015

KEY FIGURES	W14	W15	+/-
Cleared Airport Slots	61,439	<b>63,000</b>	2.5%
Seats (1000)	8,806	<b>9,246</b>	5.0%
Seats per Airport Slot	143	<b>147</b>	2.4%
Runway Utilisation Days 1-5	65.0%	<b>68.6%</b>	3.6%
Runway Utilisation Day 6	87.4%	<b>88.1%</b>	0.7%
Runway Utilisation Day 7	80.5%	<b>84.2%</b>	3.7%
Number of Carriers	64	<b>68</b>	6.3%

### TABLE OF CONTENTS

	Page
Management Summary	2
Overview Main Carriers	3
Runway Histograms	4
Terminal Histograms	5
Slot Shares	6
Traffic Flows, Aircraft Utilisation	7

### GLOSSARY OF TERMS

<b>Allocation</b>	The allocation of slots within declared capacity limits.
<b>Capacity Limits</b>	Limiting parameters declared by the Airport Operator used in the coordination process.
<b>Seats</b>	The number of seats based on the aircraft configuration advised by the airline.

### GUIDE TO HISTOGRAMS

The histograms show the pattern of traffic by time of day against the appropriate capacity limit. Each time period consists of seven columns representing the days-of-week, Monday through Sunday. All histograms are based on a reference week. For Winter 2015 the reference week is 15-21 February 2016.

## OVERVIEW MAIN CARRIERS

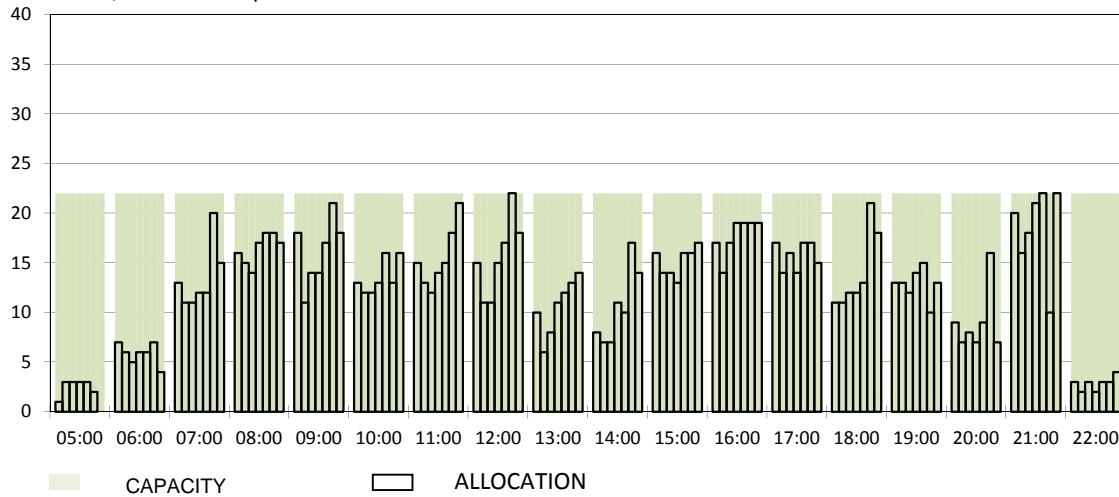
Number of average slots per week

	START OF SEASON			
	W14	W15	+/-	Share
<b>ALL CARRIERS</b>	2793	2864	2.5%	
<b>Swiss Carriers</b>	1097	1026	-6.5%	35.8%
<i>where of</i>				
EasyJet Switzerland	509	492	-3.3%	17.2%
Swiss International Air Lines	417	437	4.8%	15.3%
Darwin Airline	163	85	-47.9%	3.0%
Farnair	8	10	25.0%	0.3%
Germania Flug AG	0	2	100.0%	0.1%
<b>Foreign Carriers</b>	1696	1838	8.4%	64.2%
<i>where of</i>				
EasyJet UK	341	399	17.0%	13.9%
British Airways / BA CityFlyer	164	204	24.4%	7.1%
Lufthansa	158	157	-0.6%	5.5%
Air France / HOP	120	123	2.5%	4.3%
Brussels Airlines	88	87	-1.1%	3.0%
KLM	83	83	0.0%	2.9%
TAP Air Portugal	59	56	-5.1%	2.0%
Austrian Airlines	50	49	-2.0%	1.7%
Germanwings / Eurowings	46	46	0.0%	1.6%
Turkish Airlines	42	42	0.0%	1.5%
<b>Maj. foreign Carriers</b>	1151	1246	8.3%	43.5%

	SLOT RETURN			
	W14	W15	+/-	Share
	2839	2898	2.1%	
	1109	1047	-5.6%	36.1%
	519	515	-0.8%	17.8%
	419	438	4.5%	15.1%
	163	84	-48.5%	2.9%
	8	8	0.0%	0.3%
	0	2	100.0%	0.1%
	1730	1851	7.0%	63.9%
	347	471	35.7%	16.3%
	179	203	13.4%	7.0%
	164	156	-4.9%	5.4%
	122	126	3.3%	4.3%
	88	91	3.4%	3.1%
	83	83	0.0%	2.9%
	59	57	-3.4%	2.0%
	50	50	0.0%	1.7%
	46	46	0.0%	1.6%
	42	42	0.0%	1.4%
	1180	1325	12.3%	45.7%

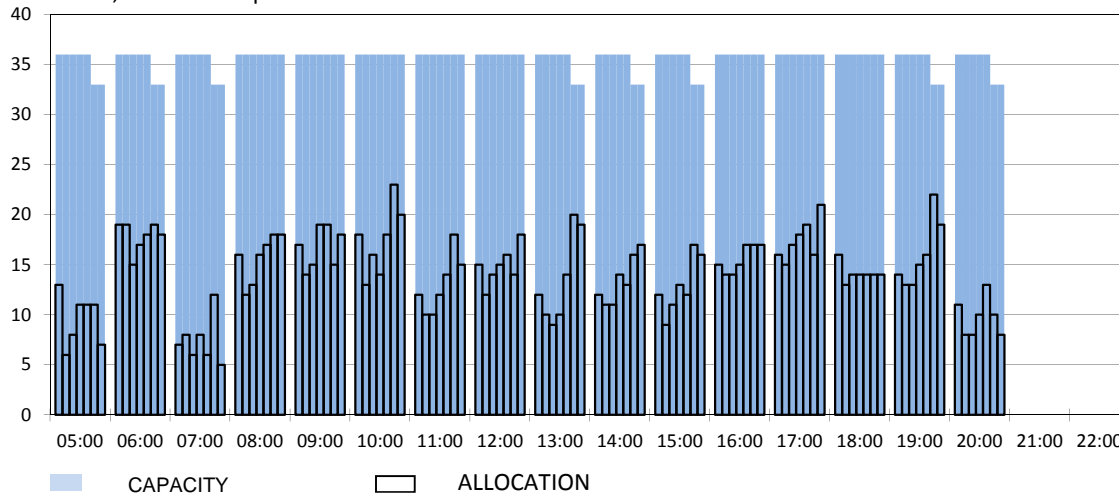
### RUNWAY MOVEMENT START OF SEASON - ARRIVALS

Reference week, movements per hour - all times UTC



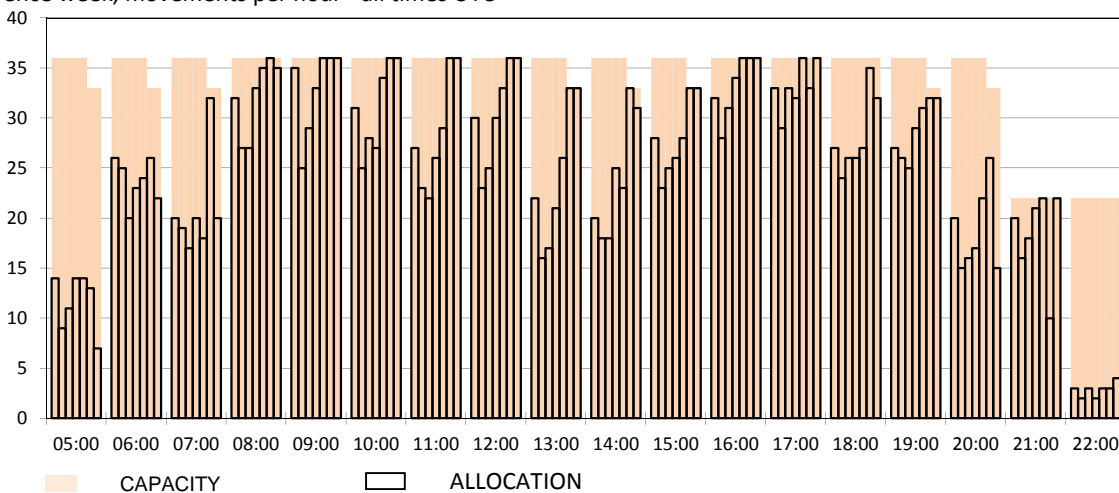
### RUNWAY MOVEMENT START OF SEASON - DEPARTURES

Reference week, movements per hour - all times UTC



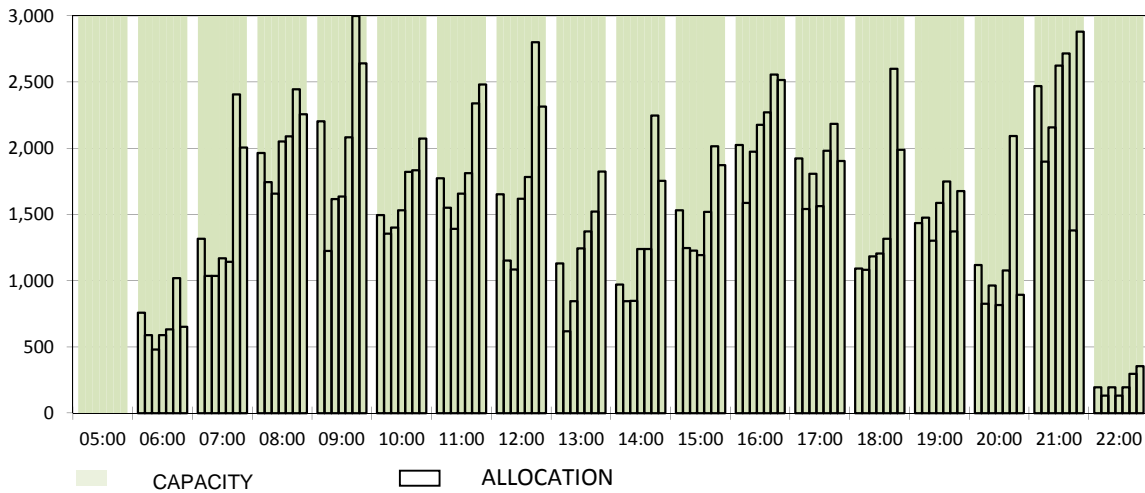
### RUNWAY MOVEMENT START OF SEASON - TOTALS

Reference week, movements per hour - all times UTC



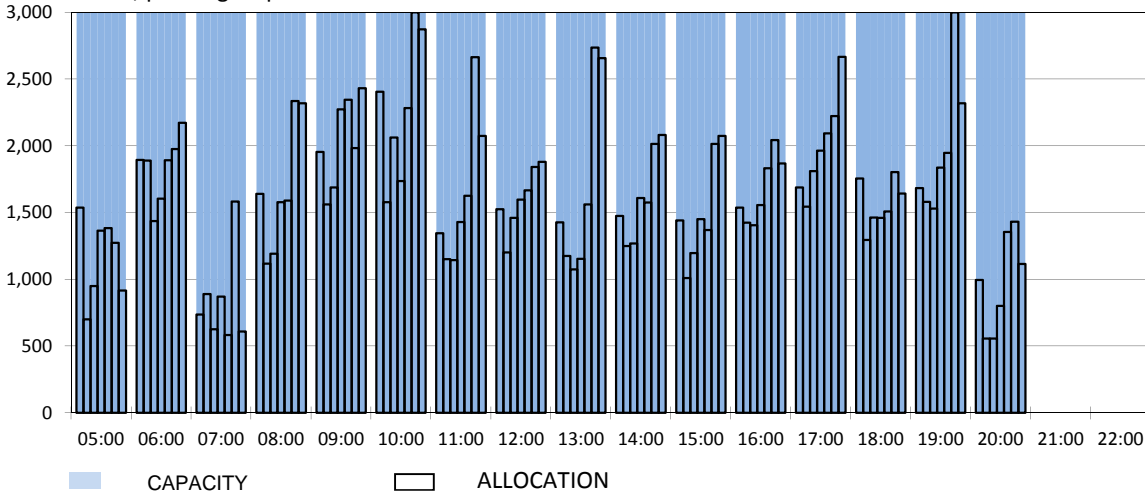
### TERMINAL START OF SEASON - ARRIVALS

Reference week, passengers per hour - all times UTC



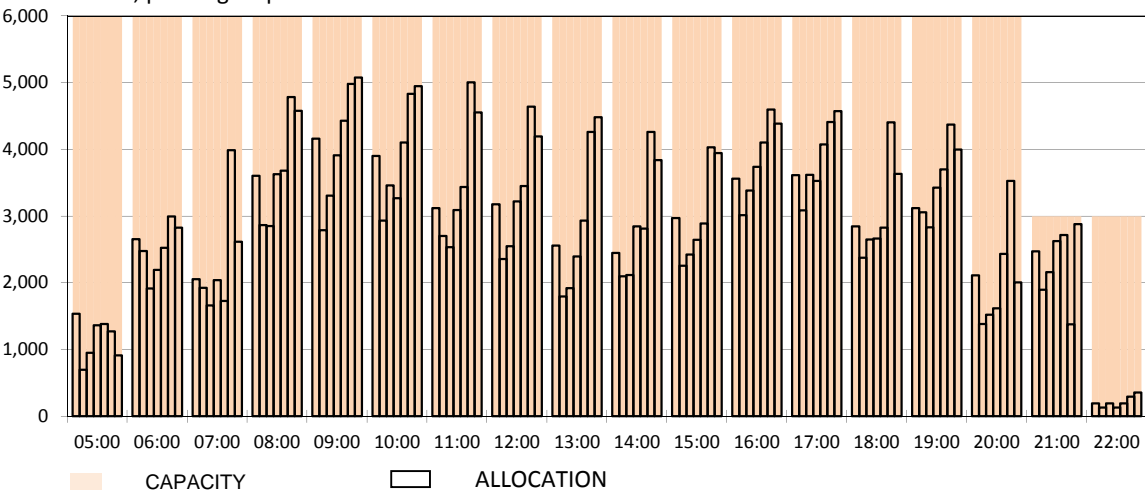
### TERMINAL START OF SEASON - DEPARTURES

Reference week, passengers per hour - all times UTC

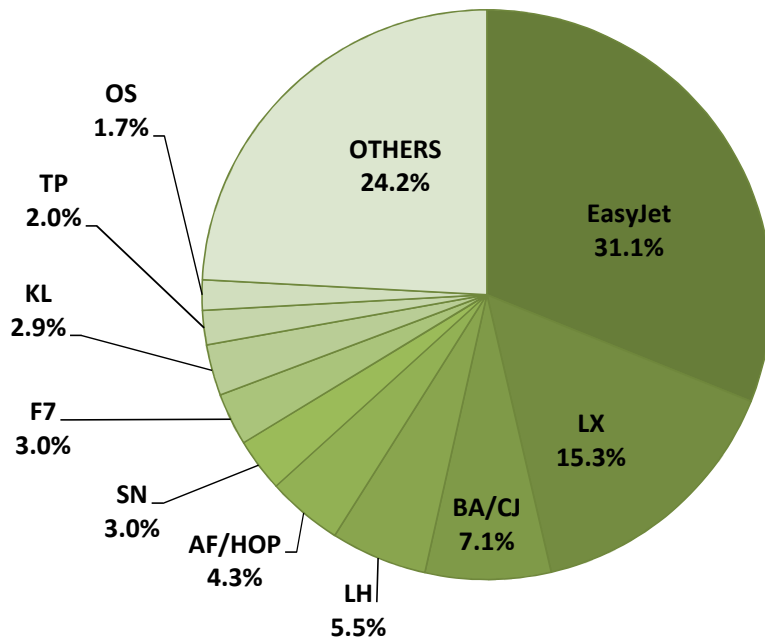


### TERMINAL START OF SEASON - TOTALS

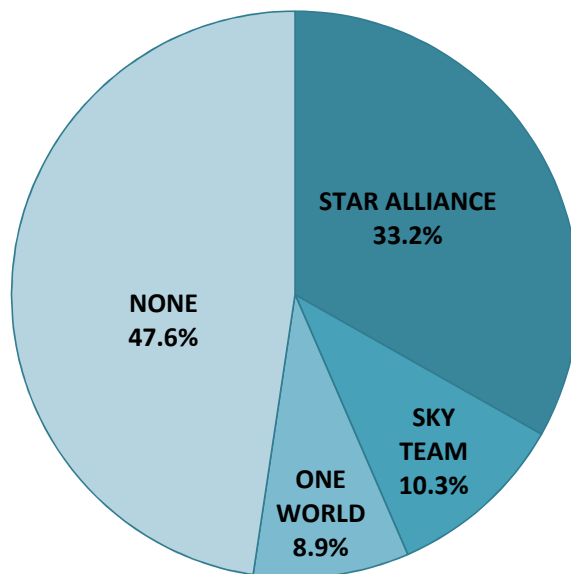
Reference week, passengers per hour - all times UTC



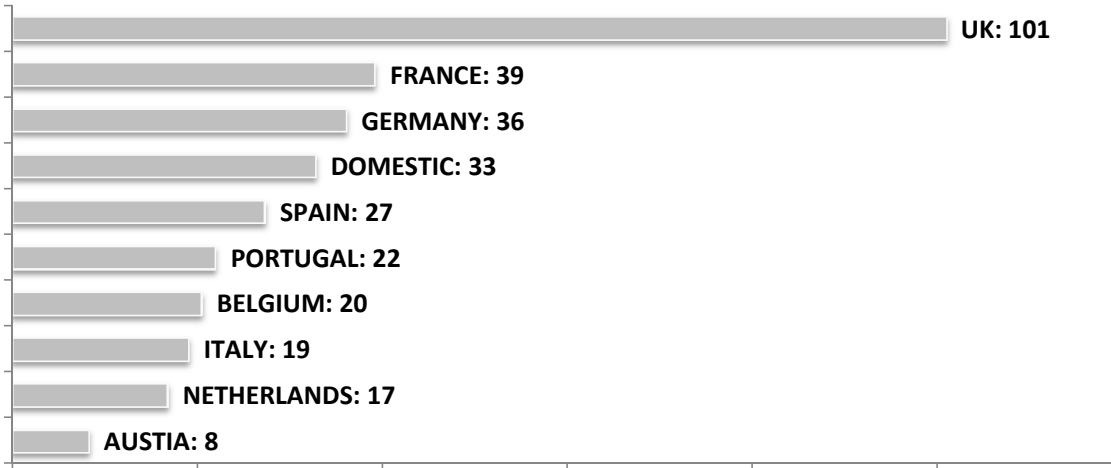
**SEASONAL SLOT SHARE - 10 TOP CARRIER**



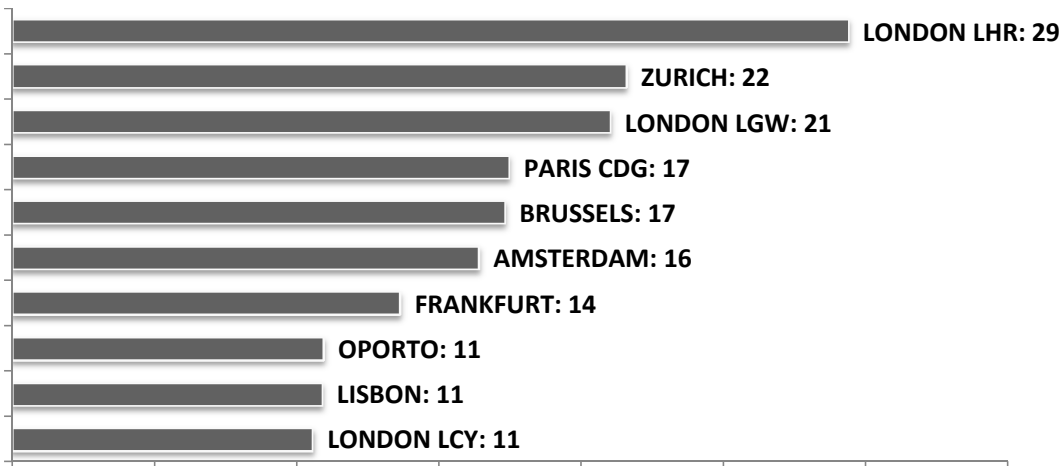
**SEASONAL SLOT SHARE - PER ALLIANCES**



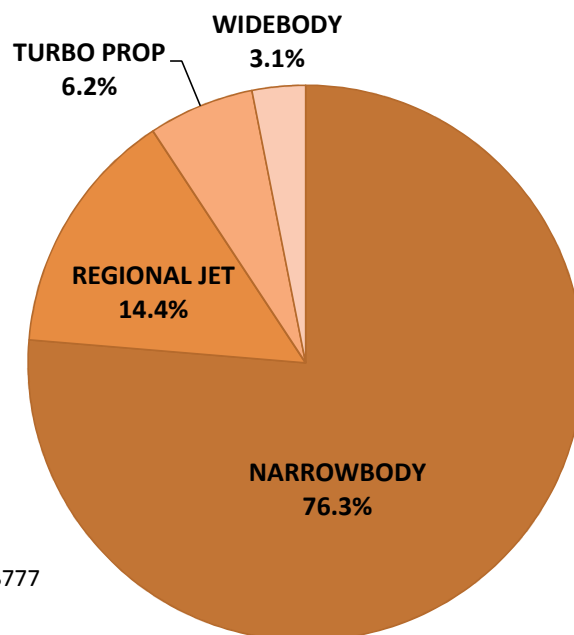
### TOP 10 COUNTRIES - Number of Daily Slots



### TOP 10 ROUTES - Number of Daily Slots



### AIRCRAFT UTILISATION



#### Aircraft Sizes

- Widebody e.g. A330, A340, B747, B767, B777
- Narrowbody e.g. A32S, B737, B757, F100
- Regional Jet e.g. ARJ, CRJ, ERJ
- Turbo Prop e.g. ATR, DH4, S20