

**START OF SEASON REPORT  
GENEVA WINTER SEASON**

30 OCTOBER 2016 - 25 MARCH 2017 (W16)

2016

KEY FIGURES	W15	W16	+/-
Cleared Airport Slots	60,136	<b>60,430</b>	0.5%
Seats offered (1000)	8,826	<b>9,383</b>	6.3%
Seats per Airport Slot	147	<b>155</b>	5.6%
Runway Utilisation Days 1-5	68.6%	<b>69.7%</b>	1.1%
Runway Utilisation Day 6	88.1%	<b>89.3%</b>	1.2%
Runway Utilisation Day 7	84.2%	<b>85.4%</b>	1.2%
Number of Carriers	63	<b>61</b>	-2

*Note: For comparison reasons W15 figures (22 season weeks) are transposed to reflect W16's 21 season weeks!*

**TABLE OF CONTENTS**

	Page
Management Summary	2
Overview Main Carriers	3
Runway Histograms	4
Terminal Histograms	5
Slot Shares	6
Traffic Flows, Aircraft Utilisation	7

**GLOSSARY OF TERMS**

<b>Allocation</b>	The allocation of slots within declared capacity limits.
<b>Capacity Limits</b>	Limiting parameters declared by the Airport Operator used in the coordination process.
<b>Seats</b>	The number of seats based on the aircraft configuration advised by the airline.

**GUIDE TO HISTOGRAMS**

The histograms show the pattern of traffic by time of day against the appropriate capacity limit. Each time period consists of seven columns representing the days-of-week, Monday through Sunday. All histograms are based on a reference week. For Winter 2016 the reference week is 13-19 February 2017.

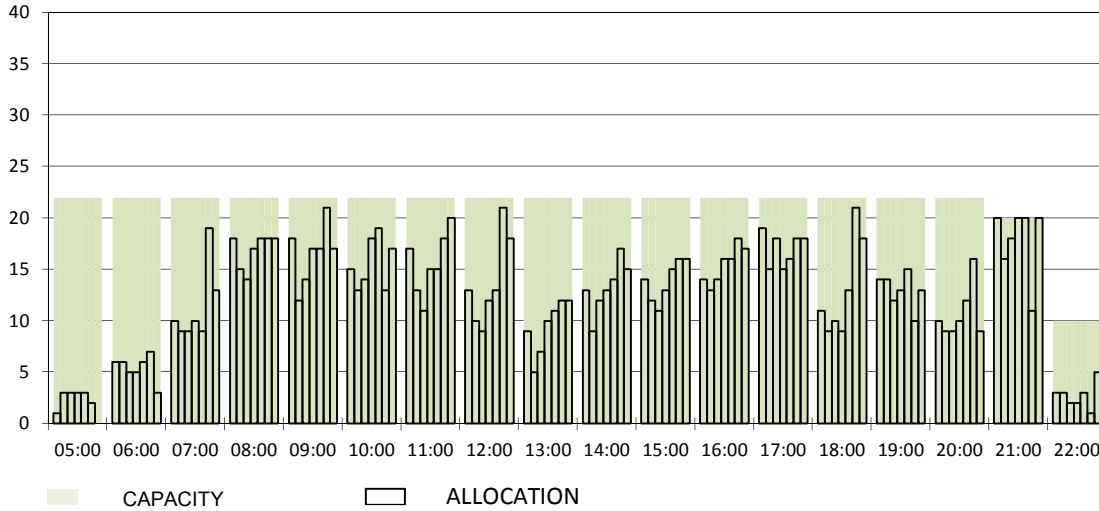
## OVERVIEW MAIN CARRIERS

Number of average slots per week

	START OF SEASON				SLOT RETURN			
	W15	W16	+/-	Share	W15	W16	+/-	Share
<b>ALL CARRIERS</b>	2864	2878	0.5%		2898	2919	0.7%	
<b>Swiss Carriers</b>	1026	1016	-1.0%	35.3%	1047	1040	-0.7%	35.6%
<i>where of</i>								
EasyJet Switzerland	492	491	-0.2%	17.1%	515	498	-3.3%	17.1%
Swiss International Air Lines	437	447	2.3%	15.5%	438	472	7.8%	16.2%
Darwin Airline	85	66	-22.4%	2.3%	84	60	-28.6%	2.1%
Farnair	10	10	0.0%	0.3%	8	8	0.0%	0.3%
Germania Flug AG	2	2	0.0%	0.1%	2	2	0.0%	0.1%
<b>Foreign Carriers</b>	1838	1862	1.3%	64.7%	1851	1879	1.5%	64.4%
<i>where of</i>								
EasyJet UK	399	446	11.8%	15.5%	412	444	7.8%	15.2%
British Airways / BA CityFlyer	204	200	-2.0%	6.9%	203	201	-1.0%	6.9%
Air France / HOP	123	121	-1.6%	4.2%	123	121	-1.6%	4.1%
Lufthansa	157	95	-39.5%	3.3%	156	95	-39.1%	3.3%
Brussels Airlines	87	80	-8.0%	2.8%	87	80	-8.0%	2.7%
KLM	83	79	-4.8%	2.7%	83	83	0.0%	2.8%
TAP Air Portugal	56	69	23.2%	2.4%	57	70	22.8%	2.4%
Austrian Airlines	49	50	2.0%	1.7%	50	50	0.0%	1.7%
Eurowings / Germanwings	46	47	2.2%	1.6%	46	47	2.2%	1.6%
Iberia	42	45	7.1%	1.6%	45	45	0.0%	1.5%
<b>Maj. foreign Carriers</b>	1246	1232	-1.1%	42.8%	1262	1236	-2.1%	42.3%

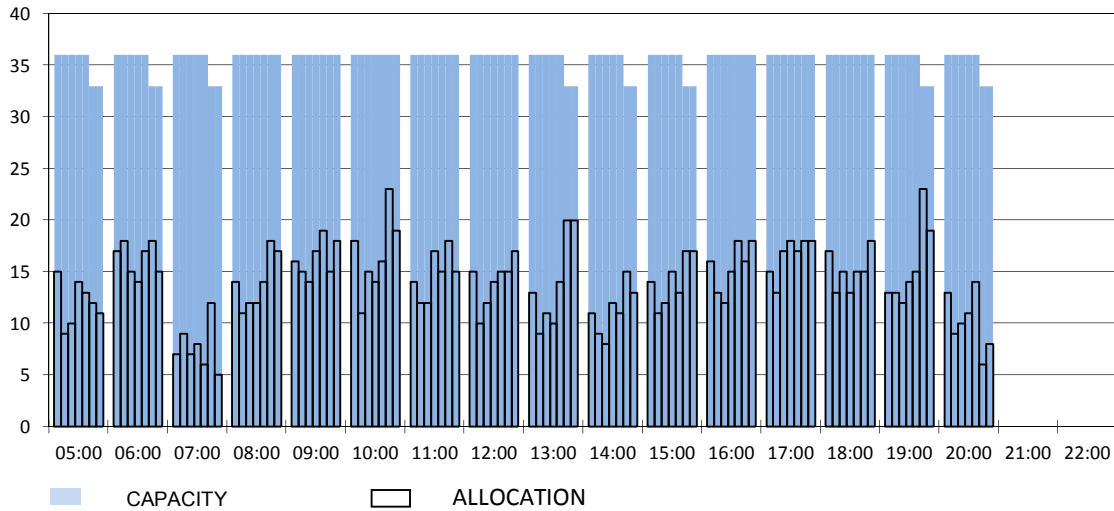
### RUNWAY MOVEMENT START OF SEASON - ARRIVALS

Reference week, movements per hour - all times UTC



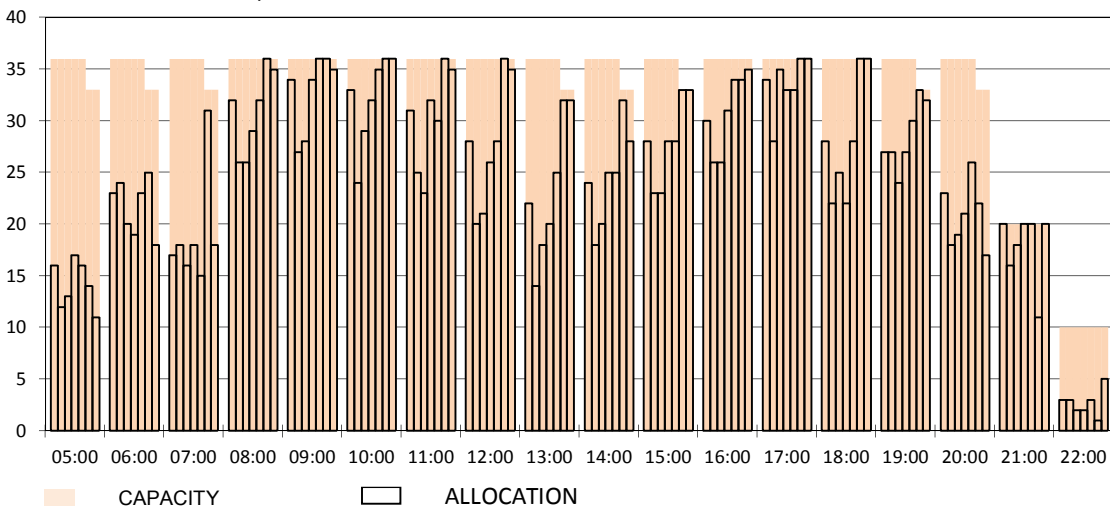
### RUNWAY MOVEMENT START OF SEASON - DEPARTURES

Reference week, movements per hour - all times UTC



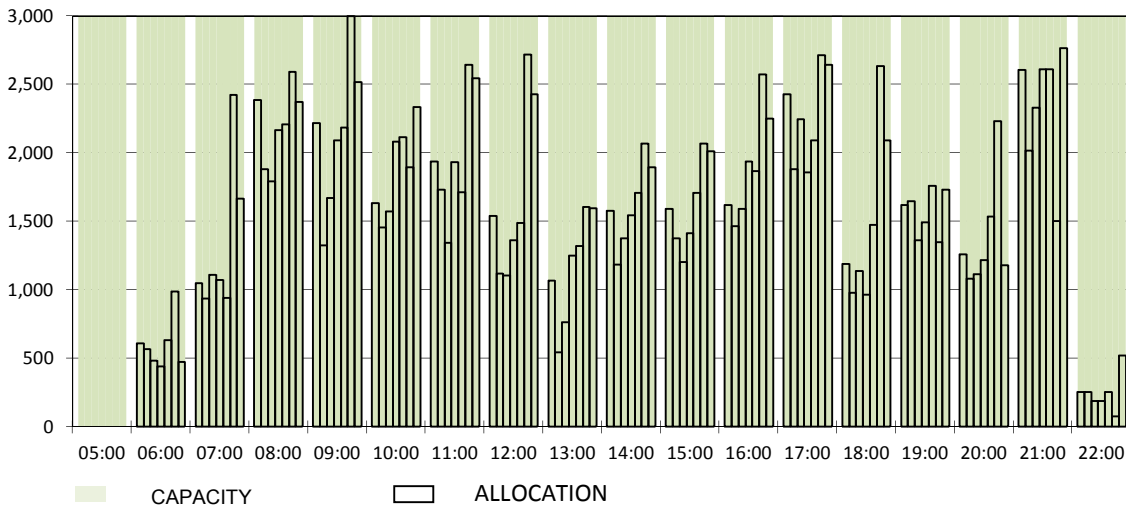
### RUNWAY MOVEMENT START OF SEASON - TOTALS

Reference week, movements per hour - all times UTC



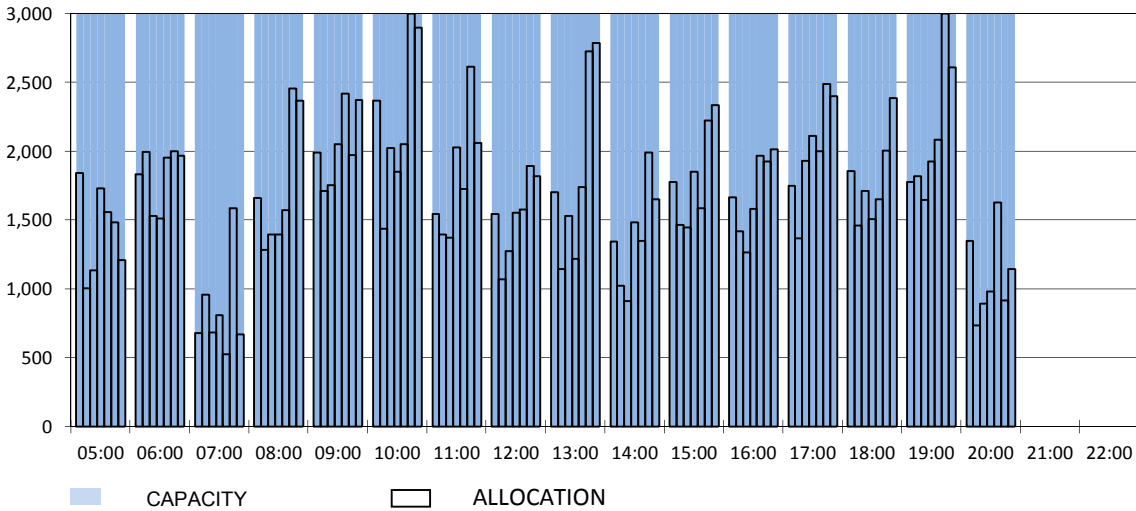
### TERMINAL START OF SEASON - ARRIVALS

Reference week, passengers per hour - all times UTC



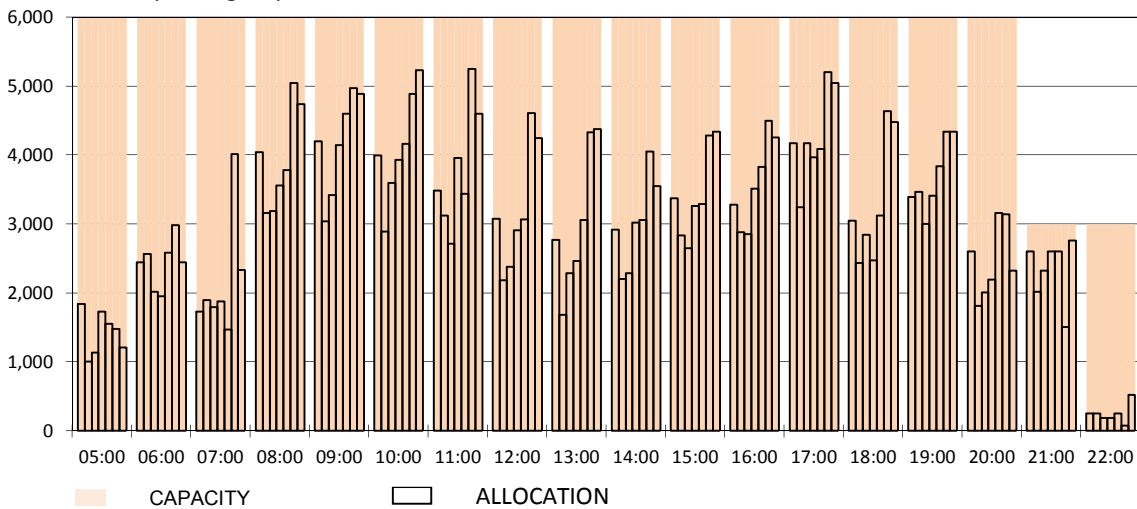
### TERMINAL START OF SEASON - DEPARTURES

Reference week, passengers per hour - all times UTC

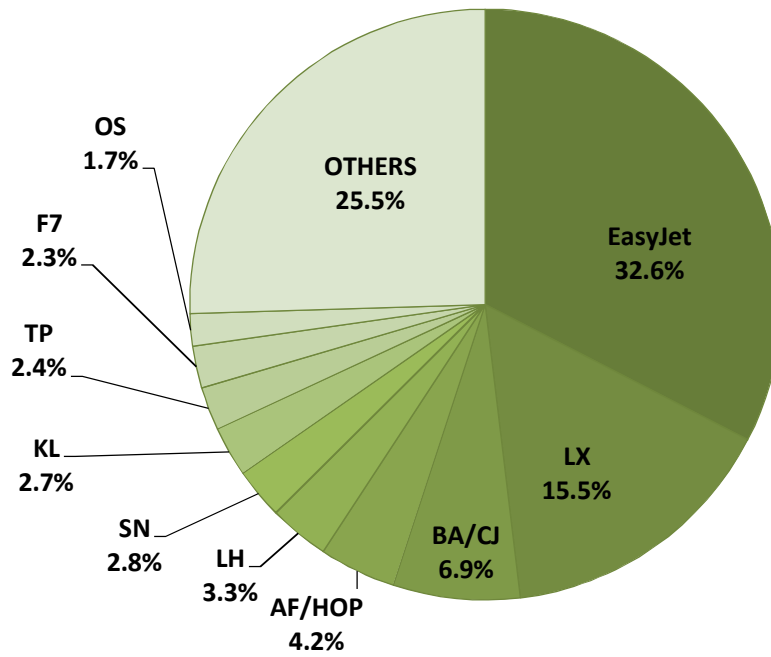


### TERMINAL START OF SEASON - TOTALS

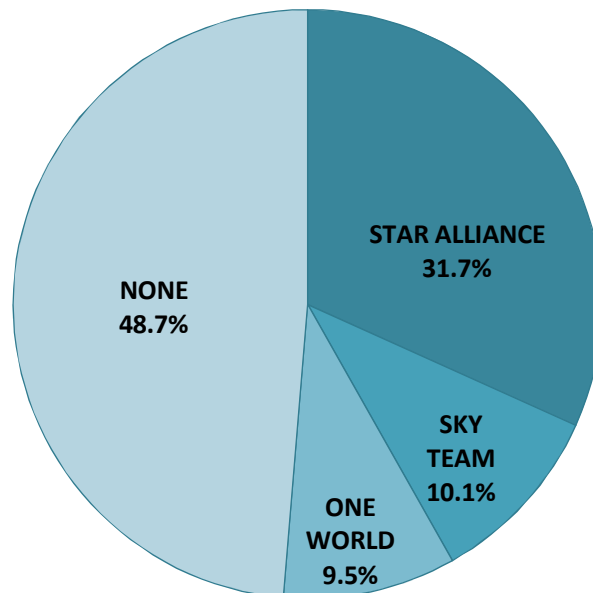
Reference week, passengers per hour - all times UTC



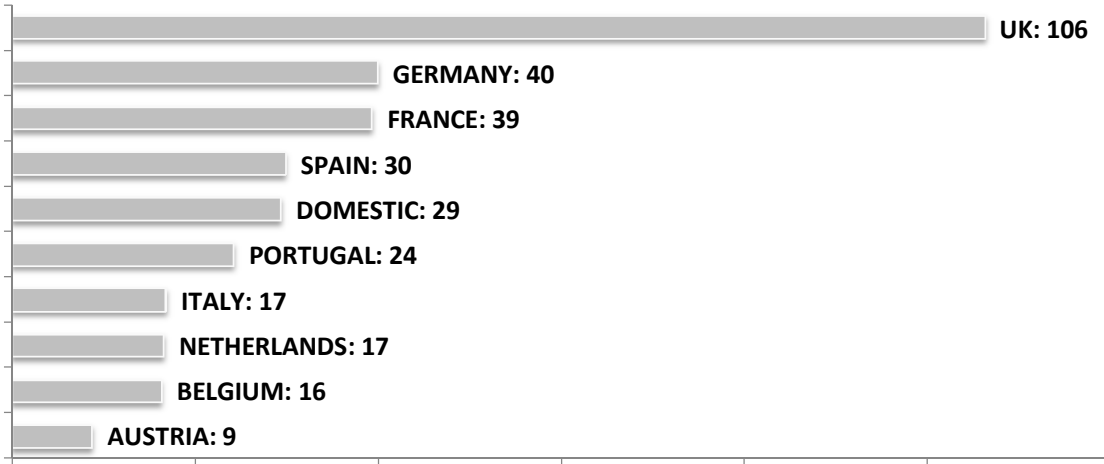
### SEASONAL SLOT SHARE - 10 TOP CARRIER



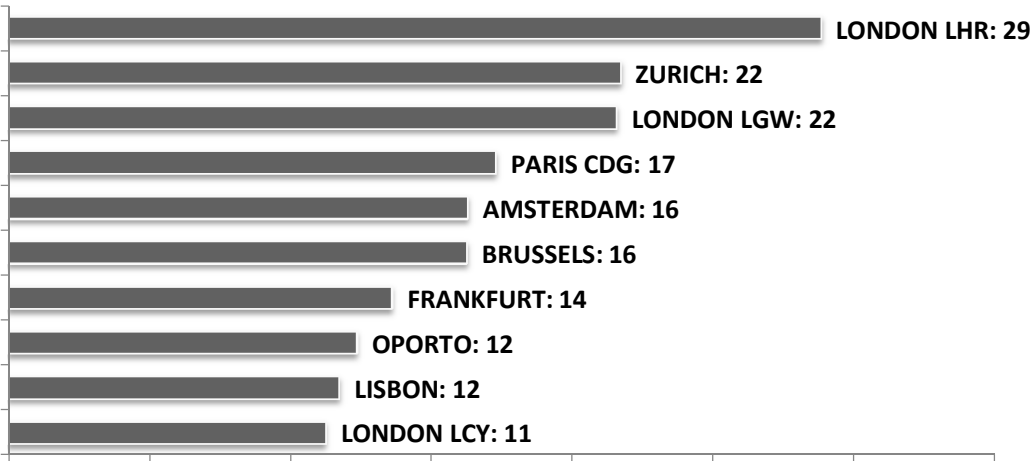
### SEASONAL SLOT SHARE - PER ALLIANCES



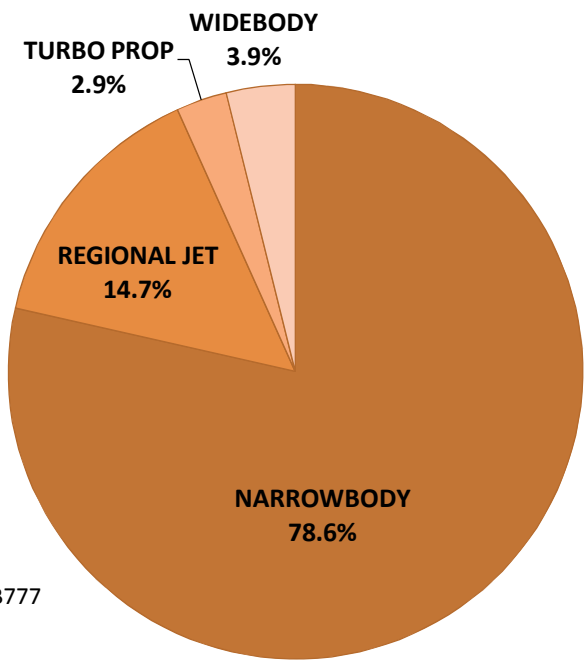
**TOP 10 COUNTRIES - Number of Daily Slots**



**TOP 10 ROUTES - Number of Daily Slots**



**AIRCRAFT UTILISATION**



- Aircraft Sizes**
- Widebody e.g. A330, A340, B747, B767, B777
  - Narrowbody e.g. A32S, B737, B757, CS1
  - Regional Jet e.g. ARJ, CRJ, ERJ
  - Turbo Prop e.g. ATR, DH4, S20