

START OF SEASON REPORT GENEVA WINTER SEASON

29 OCTOBER 2017 - 24 MARCH 2018 (W17)

2017

KEY FIGURES	W16	W17	+/-
Cleared Airport Slots	60,430	59,944	-0.8%
Seats (1000)	9,383	9,415	0.3%
Seats per Airport Slot	155	157	1.2%
Runway Utilisation Days 1-5	69.7%	70.4%	0.6%
Runway Utilisation Day 6	89.3%	88.8%	-0.5%
Runway Utilisation Day 7	85.4%	85.4%	0.0%
Number of Carriers	61	66	5

TABLE OF CONTENTS

	Page
Management Summary	2
Overview Main Carriers	3
Runway Histograms	4
Terminal Histograms	5
Slot Shares	6
Traffic Flows, Aircraft Utilisation	7

GLOSSARY OF TERMS

Allocation	The allocation of slots within declared capacity limits.
Capacity Limits	Limiting parameters declared by the Airport Operator used in the coordination process.
Seats	The number of seats based on the aircraft configuration advised by the airline.

GUIDE TO HISTOGRAMS

The histograms show the pattern of traffic by time of day against the appropriate capacity limit. Each time period consists of seven columns representing the days-of-week, Monday through Sunday. All histograms are based on a reference week. For Winter 2017 the reference week is 12-18 February 2018.

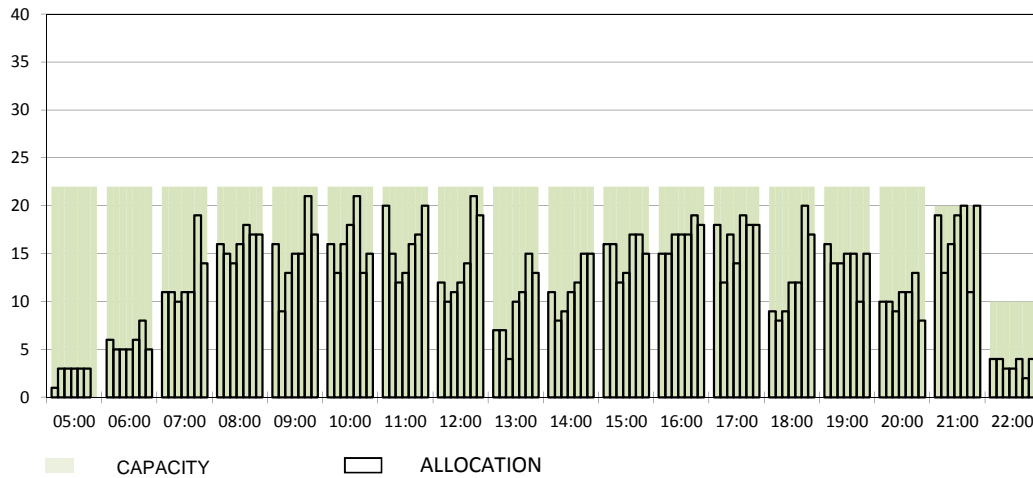
OVERVIEW MAIN CARRIERS

Number of average slots per week

	START OF SEASON				SLOT RETURN			
	W16	W17	+/-	Share	W16	W17	+/-	Share
ALL CARRIERS	2878	2854	-0.8%		2919	2890	-1.0%	
Swiss Carriers	1016	914	-10.0%	32.0%	1040	917	-11.8%	31.7%
<i>where of</i>								
EasyJet Switzerland	491	515	4.9%	18.0%	498	519	4.2%	18.0%
Swiss International Air Lines	447	364	-18.6%	12.8%	472	362	-23.3%	12.5%
Darwin Airline	66	23	-65.2%	0.8%	60	26	-56.7%	0.9%
Farnair	10	10	0.0%	0.4%	8	8	0.0%	0.3%
Germania Flug AG	2	2	0.0%	0.1%	2	2	0.0%	0.1%
Foreign Carriers	1862	1940	4.2%	68.0%	1879	1973	5.0%	68.3%
<i>where of</i>								
EasyJet UK	446	449	0.7%	15.7%	444	457	2.9%	15.8%
British Airways / BA CityFlyer	200	205	2.5%	7.2%	201	205	2.0%	7.1%
Lufthansa	95	172	81.1%	6.0%	95	172	81.1%	6.0%
Air France / HOP	121	120	-0.8%	4.2%	121	121	0.0%	4.2%
KLM	79	83	5.1%	2.9%	83	83	0.0%	2.9%
Brussels Airlines	80	78	-2.5%	2.7%	80	78	-2.5%	2.7%
TAP Air Portugal	69	67	-2.9%	2.3%	70	67	-4.3%	2.3%
Iberia	45	52	15.6%	1.8%	45	52	15.6%	1.8%
Austrian Airlines	50	47	-6.0%	1.6%	50	47	-6.0%	1.6%
SAS	44	42	-4.5%	1.5%	44	42	-4.5%	1.5%
Maj. foreign Carriers	1229	1315	7.0%	46.1%	1233	1324	7.4%	45.8%

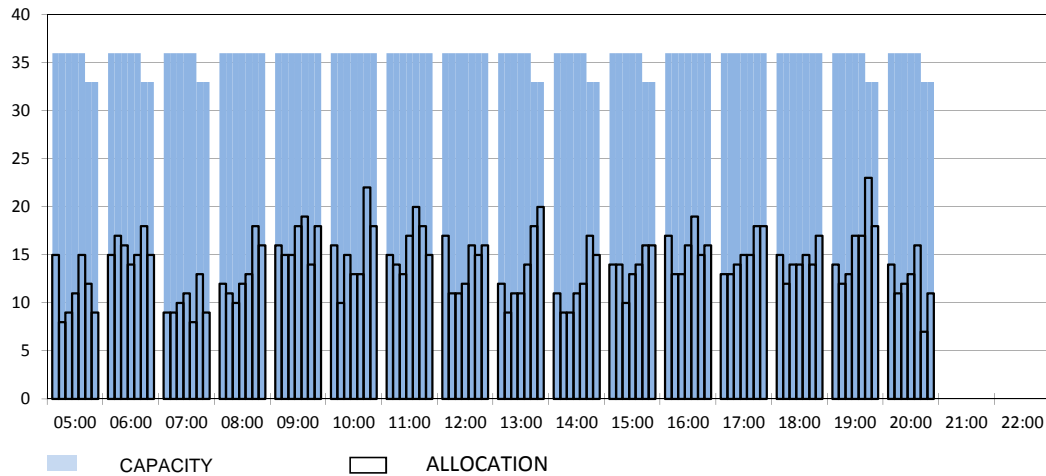
RUNWAY MOVEMENT SLOT RETURN - ARRIVALS

Reference week, movements per hour - all times UTC



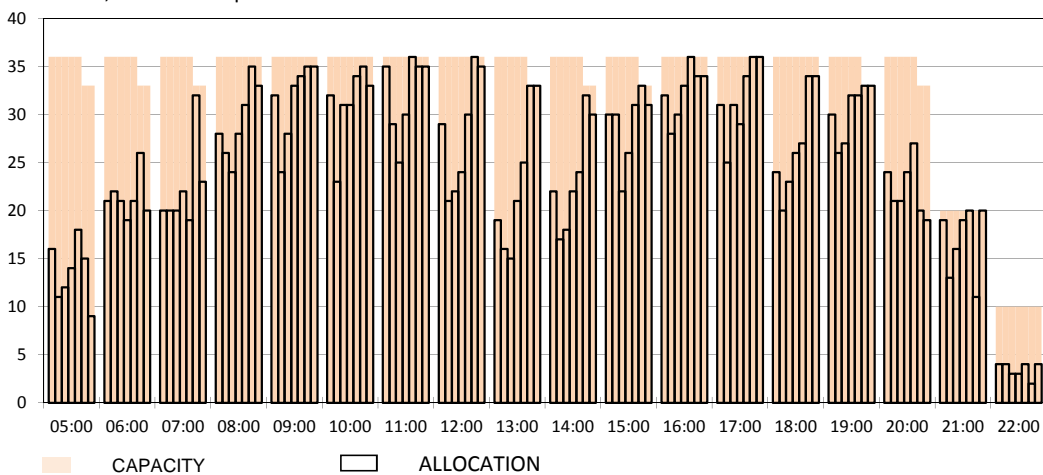
RUNWAY MOVEMENT SLOT RETURN - DEPARTURES

Reference week, movements per hour - all times UTC



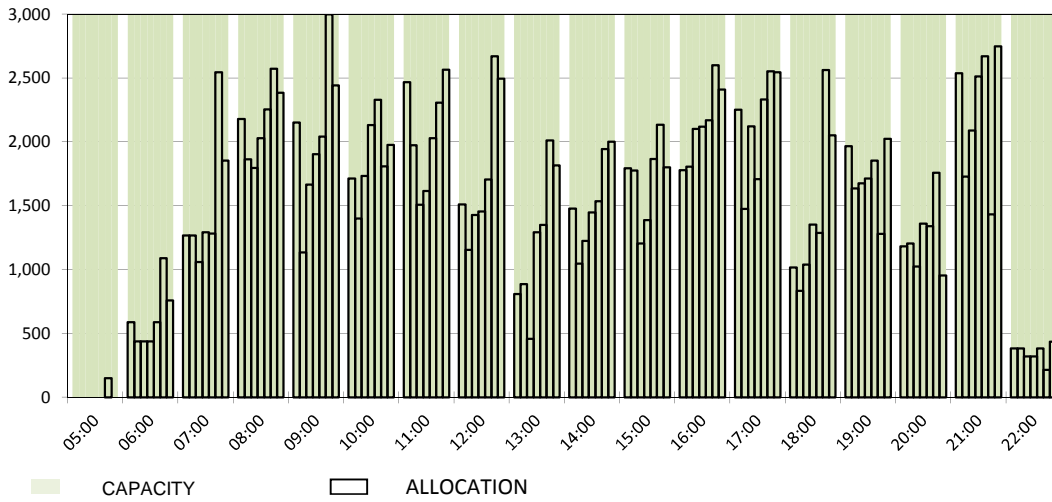
RUNWAY MOVEMENT SLOT RETURN - TOTALS

Reference week, movements per hour - all times UTC



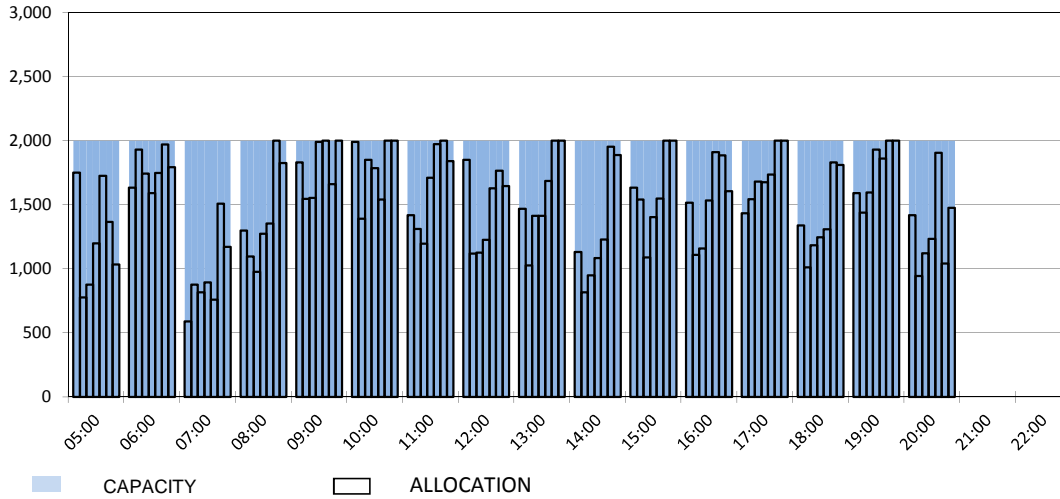
MAIN TERMINAL SLOT RETURN - ARRIVALS

Reference week, movements per hour - all times UTC



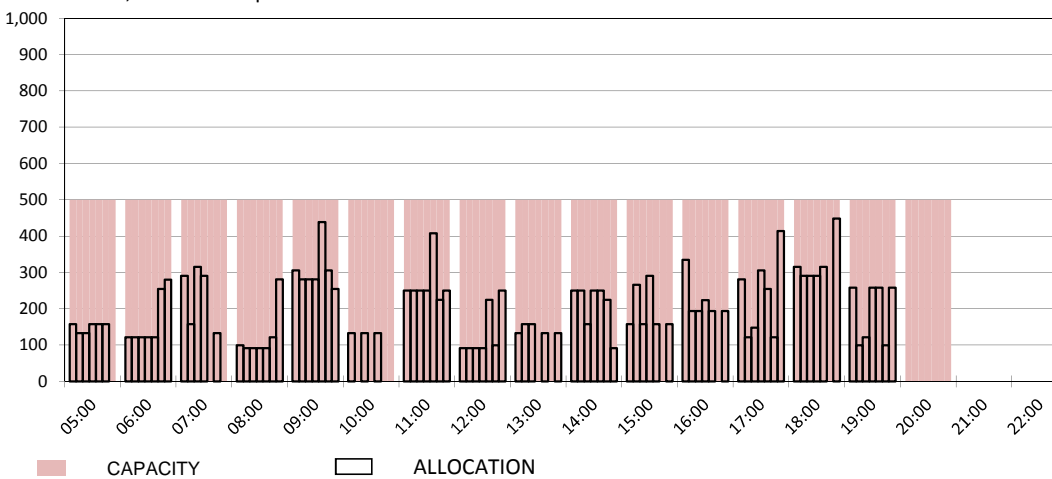
MAIN TERMINAL SLOT RETURN - DEPARTURES

Reference week, movements per hour - all times UTC

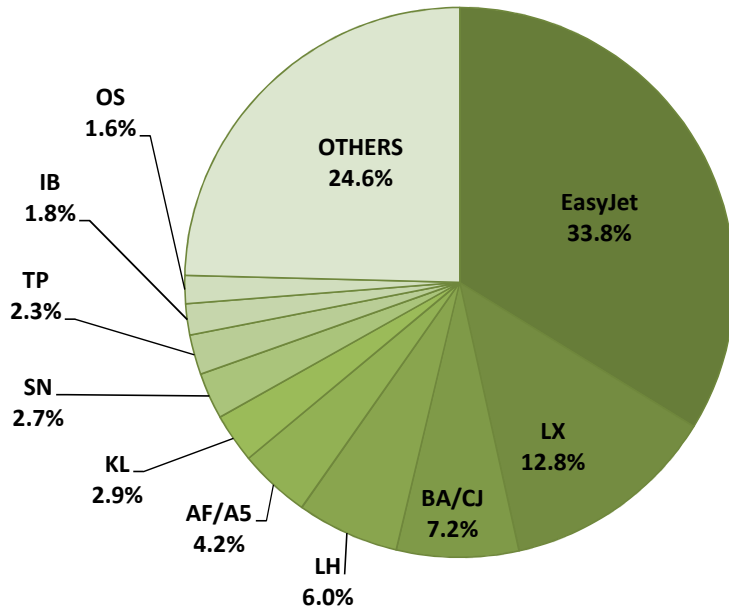


FRENCH SECTOR TERMINAL SLOT RETURN - DEPARTURES

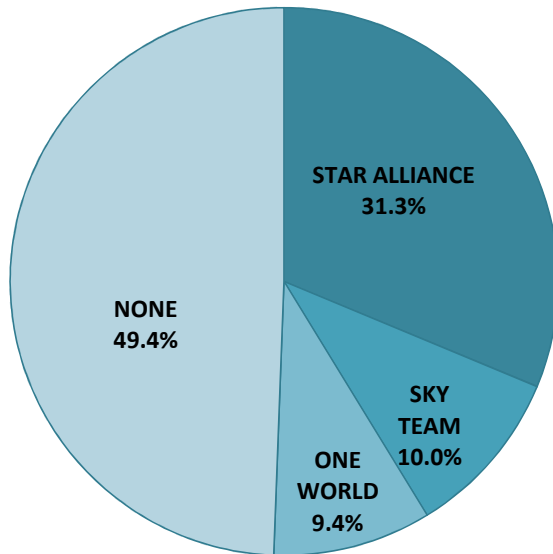
Reference week, movements per hour - all times UTC



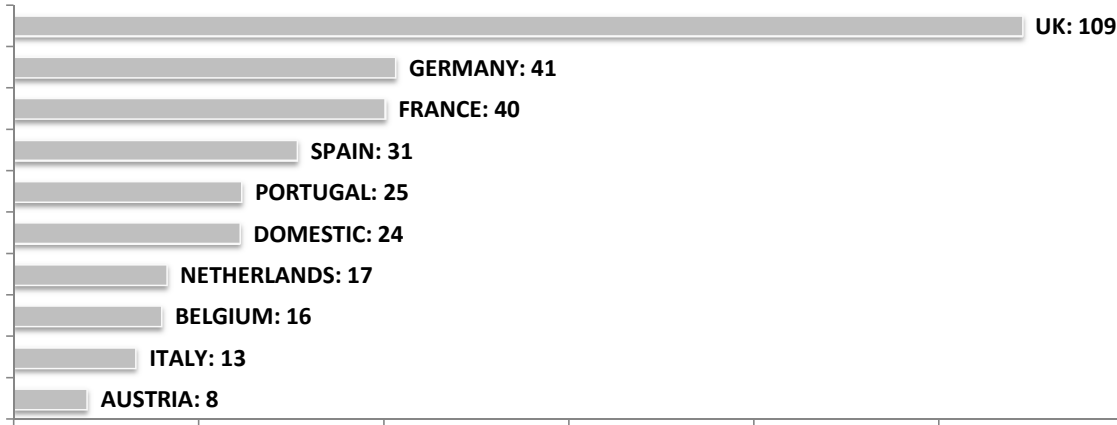
SEASONAL SLOT SHARE - 10 TOP CARRIER



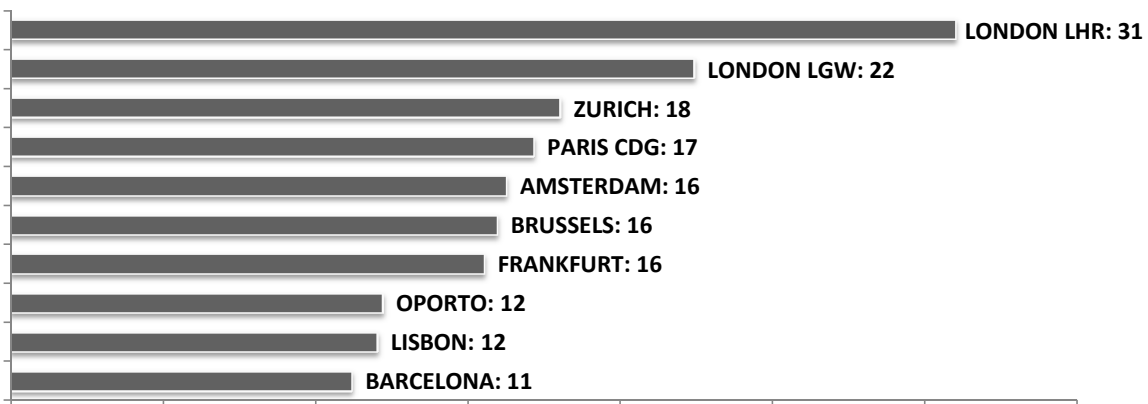
SEASONAL SLOT SHARE - PER ALLIANCES



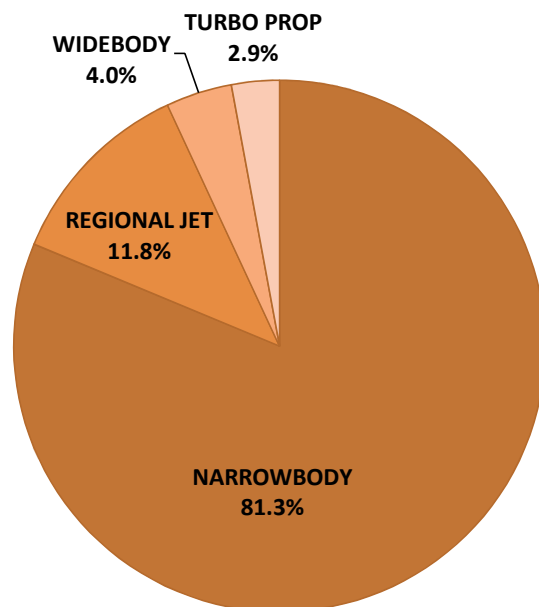
TOP 10 COUNTRIES - Number of Daily Slots



TOP 10 ROUTES - Number of Daily Slots



AIRCRAFT UTILISATION



- Aircraft Sizes**
- Widebody e.g. A330, A340, B777
 - Narrowbody e.g. A32S, B737, BCS
 - Regional Jet e.g. ARJ, CRJ, ERJ
 - Turbo Prop e.g. ATR, DH4, S20