

## START OF SEASON REPORT GENEVA WINTER SEASON

28 OCTOBER 2018 - 30 MARCH 2019 (W18)

# 2018

KEY FIGURES	W17	W18	+/-
Cleared Airport Slots	62,796	<b>63,142</b>	0.6%
Seats (1000)	9,863	<b>10,045</b>	1.8%
Seats per Airport Slot	157	<b>159</b>	1.3%
Runway Utilisation Days 1-5	70.4%	<b>69.1%</b>	-1.3%
Runway Utilisation Day 6	88.8%	<b>90.2%</b>	1.4%
Runway Utilisation Day 7	85.4%	<b>85.4%</b>	0.0%
Number of Carriers	66	<b>63</b>	-3

Note: For comparison reasons W17 figures (21 season weeks) are transposed to reflect W18's 22 season weeks!

TABLE OF CONTENTS	Page
Management Summary	2
Overview Main Carriers	3
Runway Histograms	4
Terminal Histograms	5
Slot Shares	6
Traffic Flows, Aircraft Utilisation	7

### GLOSSARY OF TERMS

<b>Allocation</b>	The allocation of slots within declared capacity limits.
<b>Capacity Limits</b>	Limiting parameters declared by the Airport Operator used in the coordination process.
<b>Seats</b>	The number of seats based on the aircraft configuration advised by the airline.

### GUIDE TO HISTOGRAMS

The histograms show the pattern of traffic by time of day against the appropriate capacity limit. Each time period consists of seven columns representing the days-of-week, Monday through Sunday. All histograms are based on a reference week. For Winter 2018 the reference week is 11-17 February 2019.

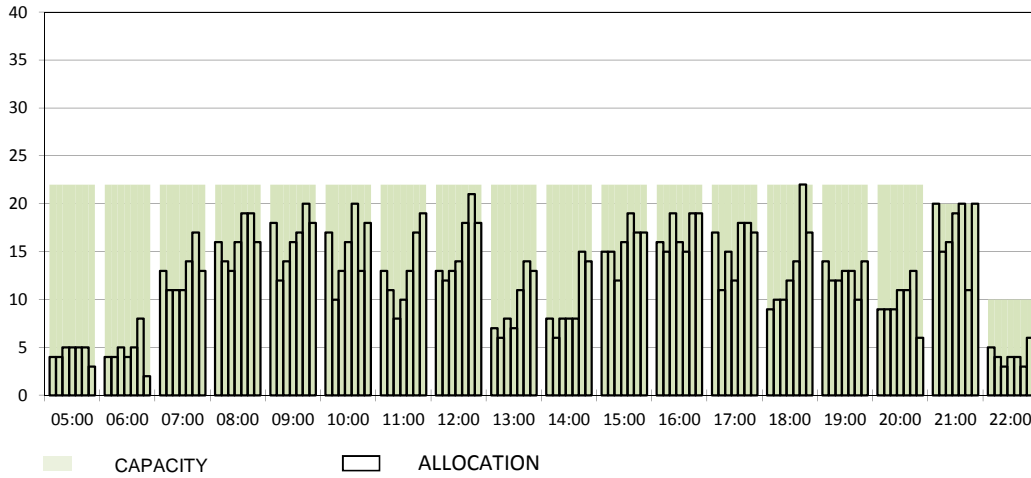
**OVERVIEW MAIN CARRIERS**

Number of average slots per week

	START OF SEASON				SLOT RETURN			
	W17	W18	+/-	Share	W17	W18	+/-	Share
<b>ALL CARRIERS</b>	2854	2870	0.6%		2890	2881	-0.3%	
<b>Swiss Carriers</b>	881	900	2.2%	31.4%	917	905	-1.3%	31.4%
<i>where of</i>								
EasyJet Switzerland	515	529	2.7%	18.4%	519	533	2.7%	18.5%
Swiss International Air Lines	364	369	1.4%	12.9%	362	370	2.2%	12.8%
Germania Flug AG	2	2	0.0%	0.1%	2	2	0.0%	0.1%
<b>Foreign Carriers</b>	1973	1970	-0.2%	68.6%	1973	1976	0.2%	68.6%
<i>where of</i>								
EasyJet UK	449	457	1.8%	15.9%	457	461	0.9%	16.0%
British Airways / BA CityFlyer	205	205	0.0%	7.1%	205	205	0.0%	7.1%
Lufthansa	172	171	-0.6%	6.0%	172	171	-0.6%	5.9%
Air France / HOP	120	129	7.5%	4.5%	121	130	7.4%	4.5%
KLM	83	83	0.0%	2.9%	83	83	0.0%	2.9%
Brussels Airlines	78	77	-1.3%	2.7%	78	77	-1.3%	2.7%
TAP Air Portugal	67	66	-1.5%	2.3%	67	66	-1.5%	2.3%
Alitalia	30	60	100.0%	2.1%	42	64	52.4%	2.2%
Iberia	52	53	1.9%	1.8%	52	53	1.9%	1.8%
Austrian Airlines	47	48	2.1%	1.7%	47	48	2.1%	1.7%
<b>Maj. foreign Carriers</b>	1303	1349	3.5%	47.0%	1324	1358	2.6%	47.1%

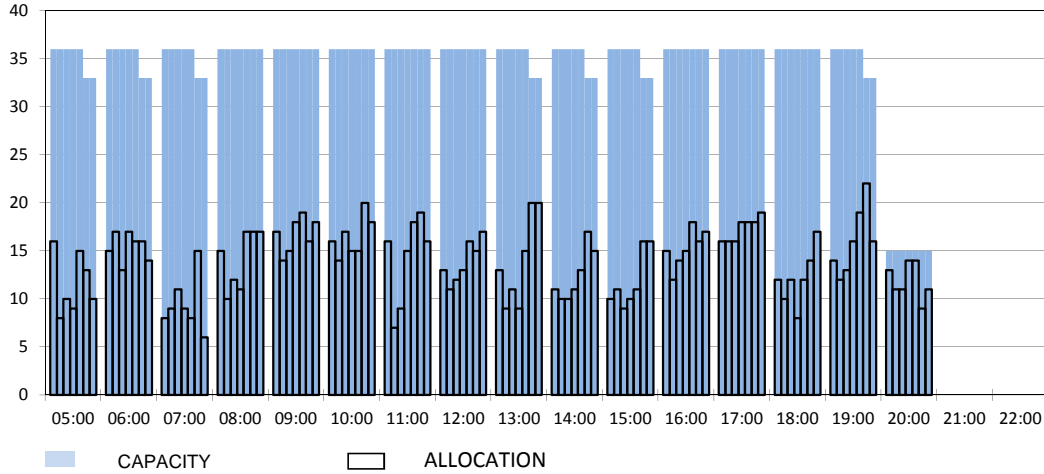
### RUNWAY MOVEMENT START OF SEASON - ARRIVALS

Reference week, movements per hour - all times UTC



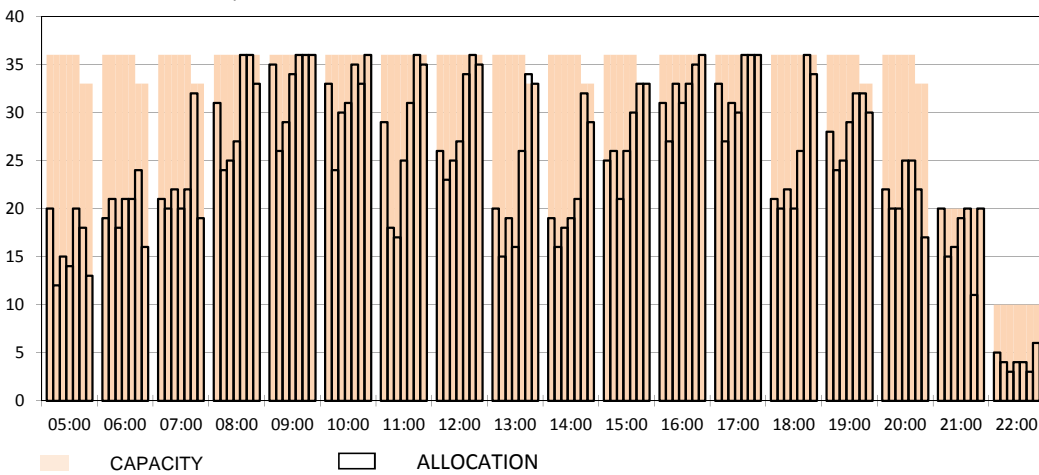
### RUNWAY MOVEMENT START OF SEASON - DEPARTURES

Reference week, movements per hour - all times UTC



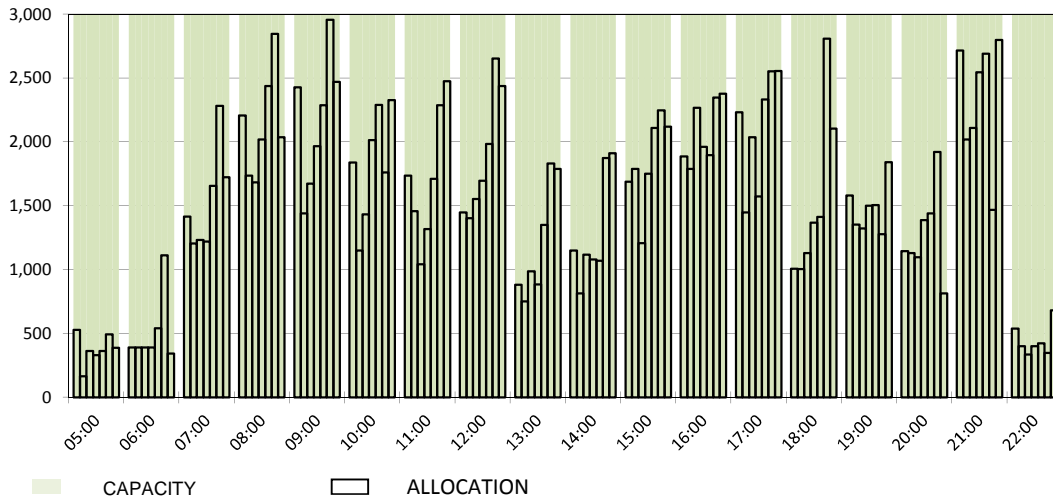
### RUNWAY MOVEMENT START OF SEASON - TOTALS

Reference week, movements per hour - all times UTC



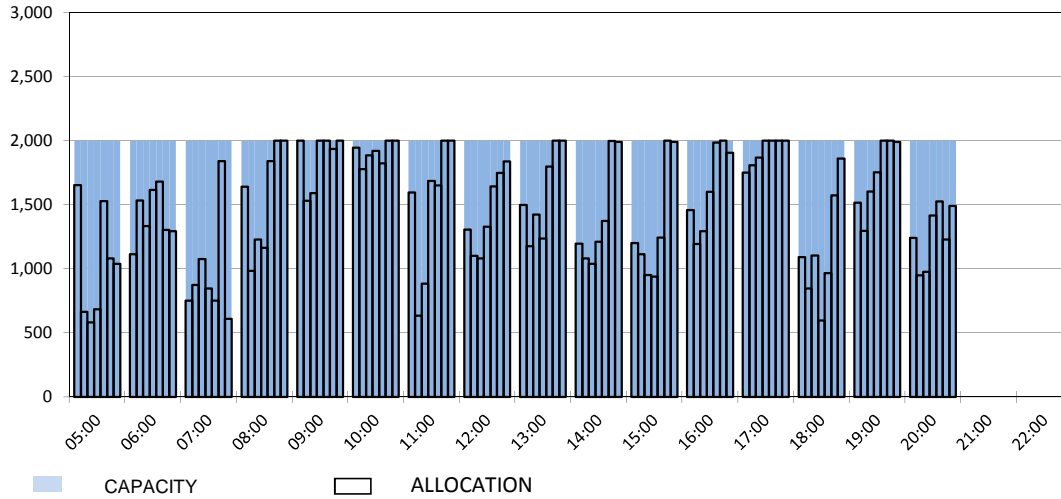
### MAIN TERMINAL START OF SEASON - ARRIVALS

Reference week, movements per hour - all times UTC



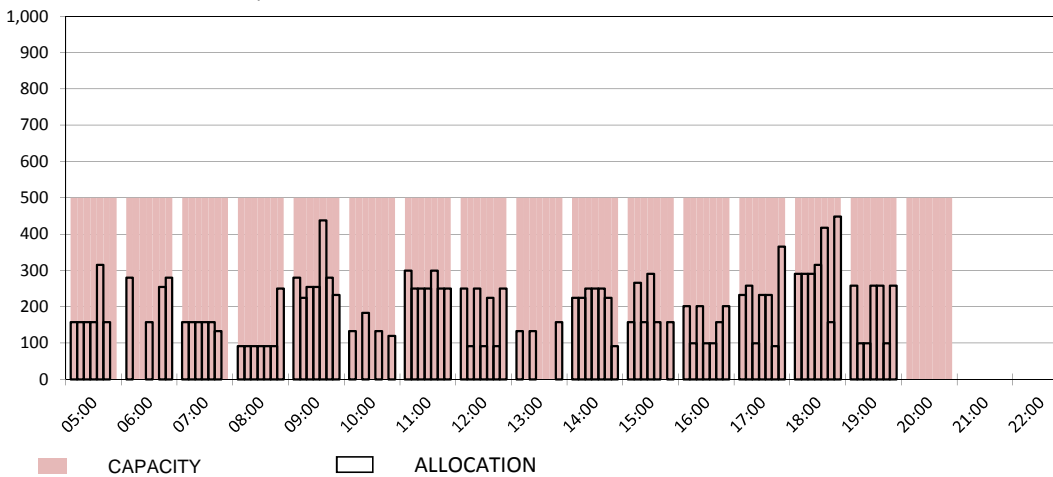
### MAIN TERMINAL START OF SEASON - DEPARTURES

Reference week, movements per hour - all times UTC

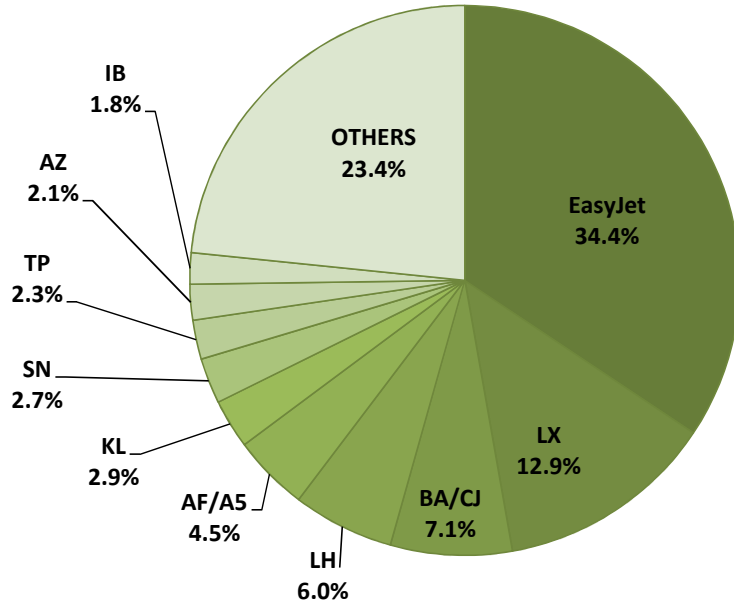


### FRENCH SECTOR TERMINAL START OF SEASON - DEPARTURES

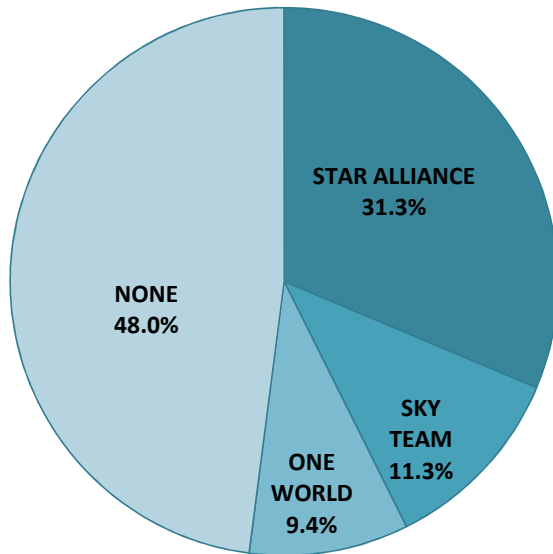
Reference week, movements per hour - all times UTC



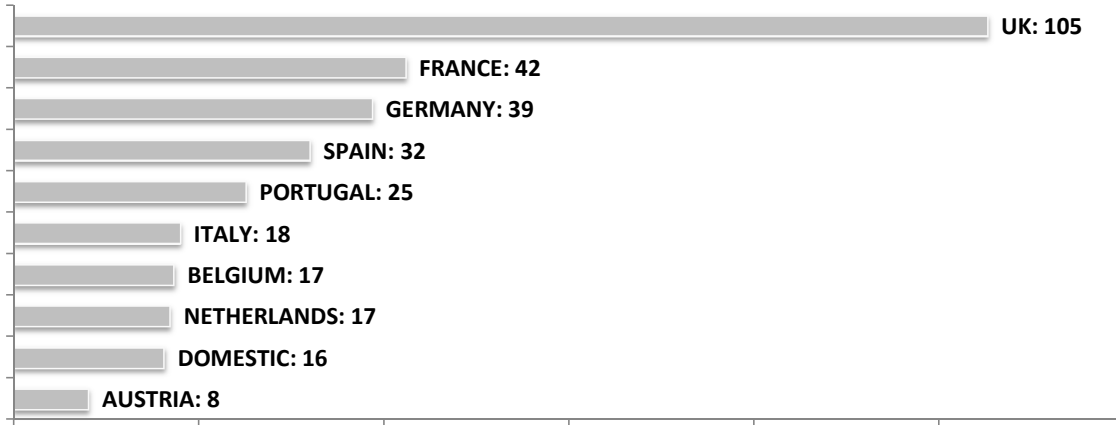
**SEASONAL SLOT SHARE - 10 TOP CARRIER**



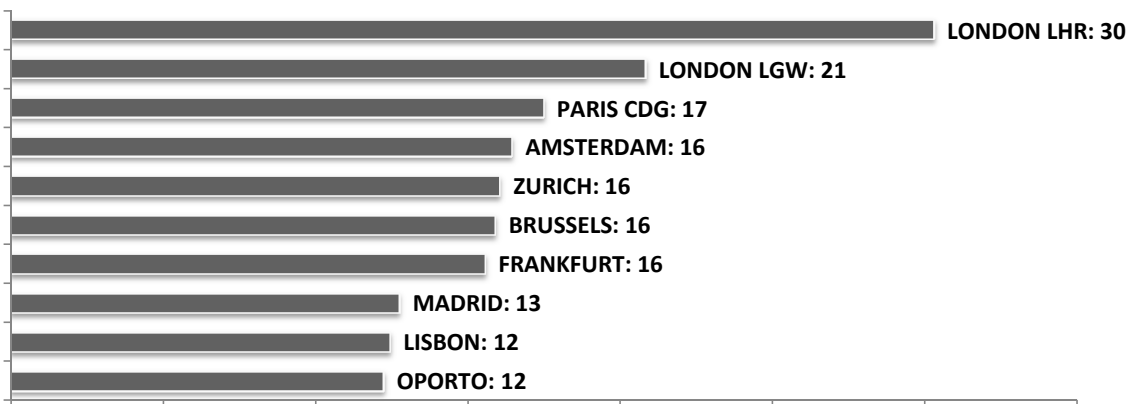
**SEASONAL SLOT SHARE - PER ALLIANCES**



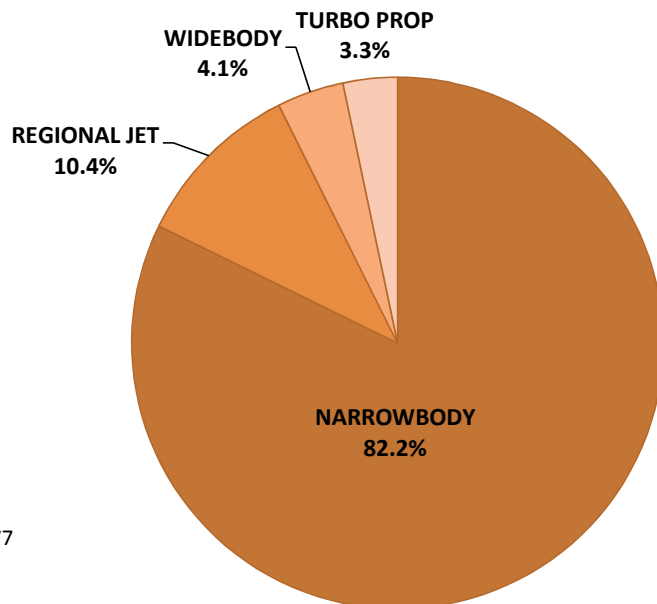
**TOP 10 COUNTRIES - Number of Daily Slots**



**TOP 10 ROUTES - Number of Daily Slots**



**AIRCRAFT UTILISATION**



- Aircraft Sizes**
- Widebody e.g. A330, A340, B777
  - Narrowbody e.g. A32S, B737, BCS
  - Regional Jet e.g. ARJ, CRJ, ERJ
  - Turbo Prop e.g. ATR, DH4, S20