

START OF SEASON REPORT ZURICH SUMMER SEASON

30 MARCH - 25 OCTOBER 2014 (S14)

2014

KEY FIGURES	S13	S14	+/-
Cleared Airport Slots	140,599	144,529	2.8%
Seats (1000)	20,631	21,208	2.8%
Seats per Airport Slot	147	147	0.0%
Runway Utilisation	64.6%	65.9%	1.3%
Number of Carriers	80	81	1.3%

TABLE OF CONTENTS

	Page
Management Summary	2
Overview Main Carriers	3
Runway Histograms	4,5
Slot Shares	6
Traffic Flows, Aircraft Utilisation	7

GLOSSARY OF TERMS

Allocation	The allocation of slots within declared capacity limits.
Capacity Limits	Limiting parameters declared by the Airport Operator used in the coordination process.
Seats	The number of seats based on the aircraft configuration advised by the airline.

GUIDE TO HISTOGRAMS

The histograms show the pattern of traffic by time of day against the appropriate capacity limit. Each time period consists of seven columns representing the days-of-week, Monday through Sunday. All histograms are based on a reference week.

For Summer 2014 the reference week is 15 -21 September 2014.

OVERVIEW MAIN CARRIERS

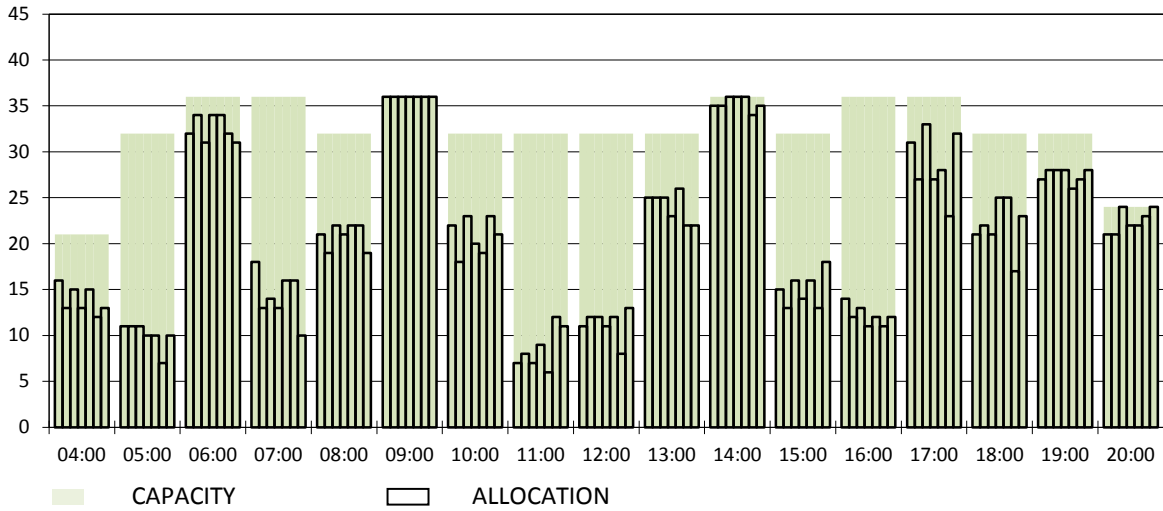
Number of average slots per week

	START OF SEASON			
	S13	S14	+/-	Share
ALL CARRIERS	4687	4818	2.8%	
Swiss Carriers	2780	2827	1.7%	58.7%
<i>where of</i>				
Swiss International Air Lines	2509	2483	-1.0%	51.5%
Edelweiss Air	144	162	12.5%	3.4%
Darwin Airline	33	94	184.8%	2.0%
Helvetic	60	51	-15.0%	1.1%
Belair	34	28	-17.6%	0.6%
Farnair	0	9		0.2%
Foreign Carriers	1907	1991	4.4%	41.3%
<i>where of</i>				
Air Berlin	241	259	7.5%	5.4%
Lufthansa/Germanwings	274	257	-6.2%	5.3%
British Airways/BA CityFlyer	117	127	8.5%	2.6%
KLM	84	84	0.0%	1.7%
Air France	81	66	-18.5%	1.4%
Turkish Airlines	63	64	1.6%	1.3%
Austrian Airlines	54	64	18.5%	1.3%
SAS	58	56	-3.4%	1.2%
InterSky	78	55	-29.5%	1.1%
TAP	53	53	0.0%	1.1%
Maj. foreign Carriers	1103	1085	-1.6%	22.5%

	SLOT RETURN			
	S13	S14	+/-	Share
	4855	4939	1.7%	
	2833	2873	1.4%	58.2%
	2528	2504	-0.9%	50.7%
	140	162	15.7%	3.3%
	25	98	292.0%	2.0%
	107	70	-34.6%	1.4%
	33	29	-12.1%	0.6%
	0	10		0.2%
	2022	2066	2.2%	41.8%
	240	261	8.8%	5.3%
	276	260	-5.8%	5.3%
	117	127	8.5%	2.6%
	84	84	0.0%	1.7%
	81	66	-18.5%	1.3%
	63	62	-1.6%	1.3%
	54	64	18.5%	1.3%
	58	56	-3.4%	1.1%
	76	62	-18.4%	1.3%
	53	53	0.0%	1.1%
	1102	1095	-0.6%	22.2%

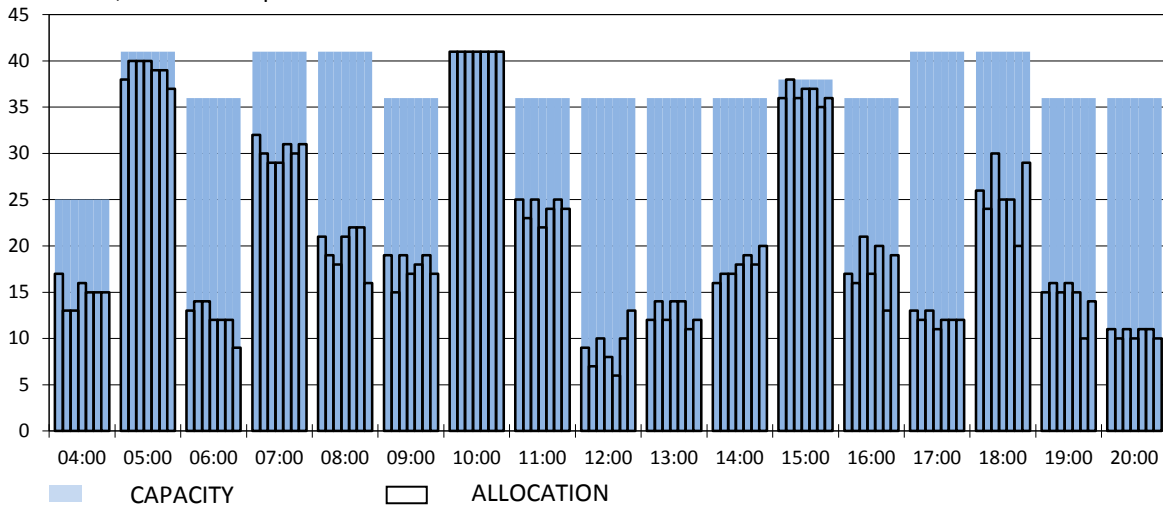
RUNWAY MOVEMENT START OF SEASON - ARRIVALS

Reference week, movements per hour - all times UTC



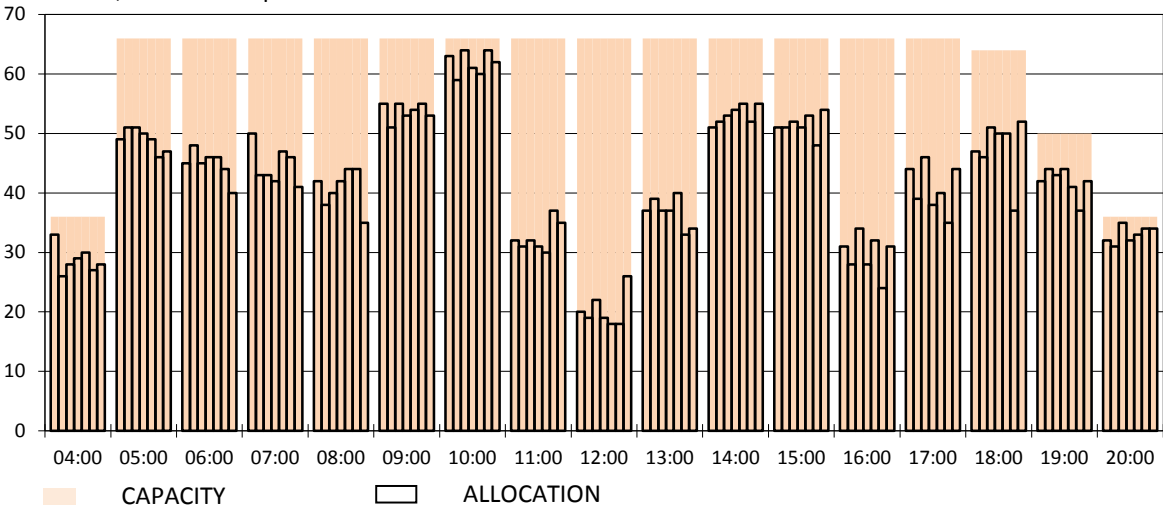
RUNWAY MOVEMENT START OF SEASON - DEPARTURES

Reference week, movements per hour - all times UTC



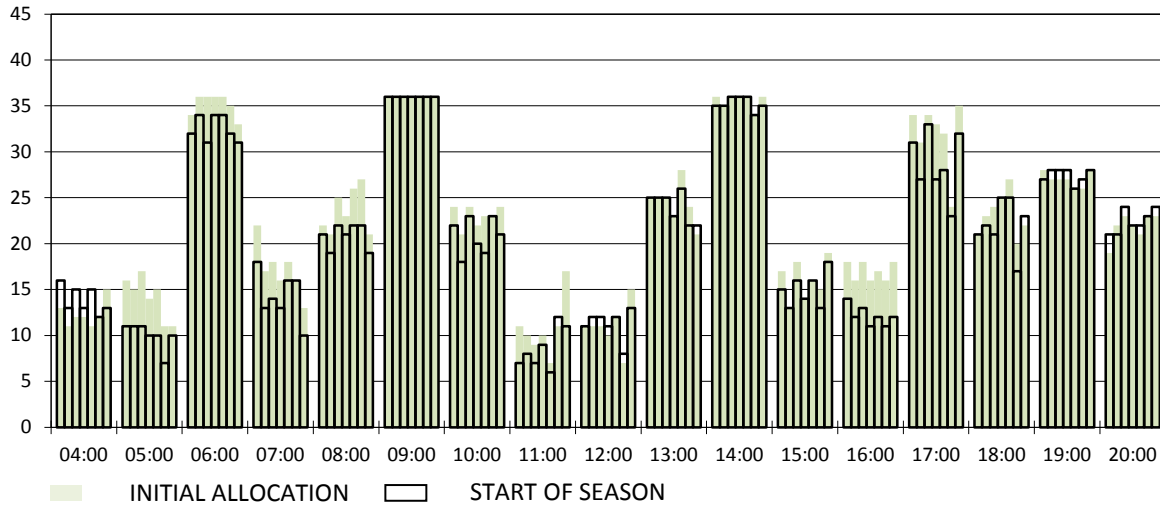
RUNWAY MOVEMENT START OF SEASON - TOTALS

Reference week, movements per hour - all times UTC



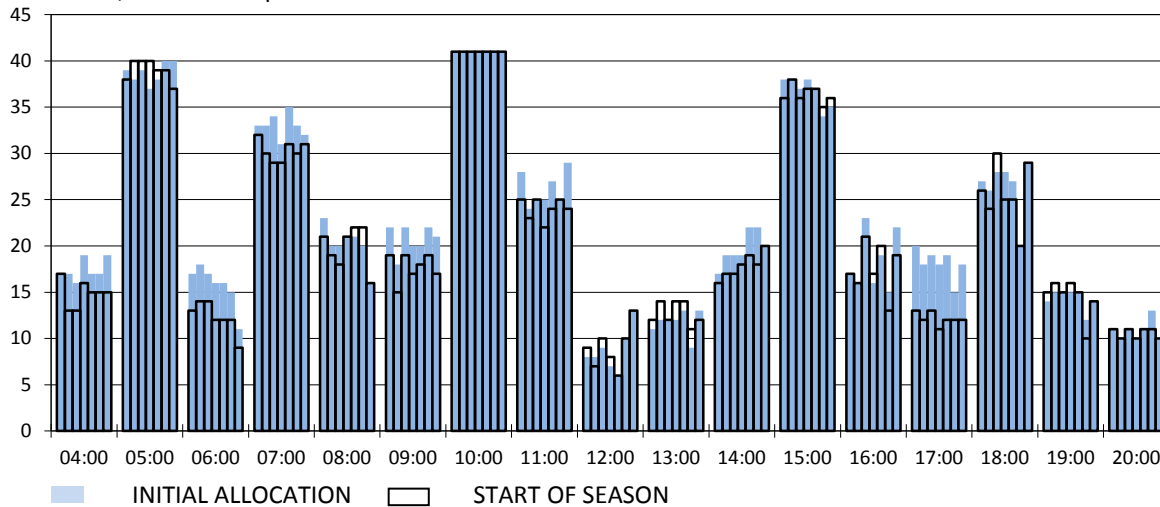
RUNWAY MOVEMENT DEVELOPMENT INITIAL ALLOCATION TO START OF SEASON - ARRIVALS

Reference week, movements per hour - all times UTC



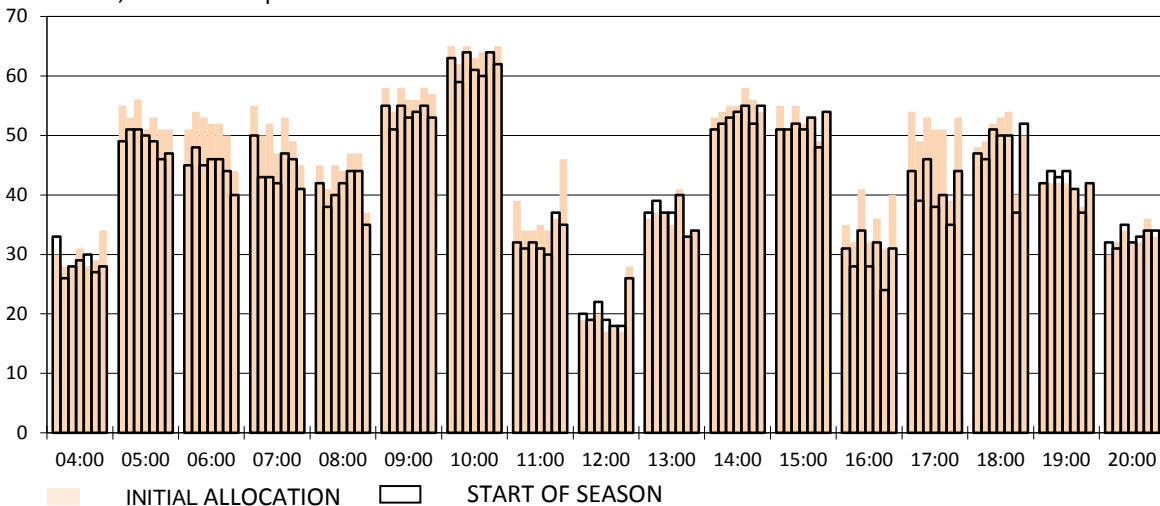
RUNWAY MOVEMENT DEVELOPMENT INITIAL ALLOCATION TO START OF SEASON - DEPARTURES

Reference week, movements per hour - all times UTC



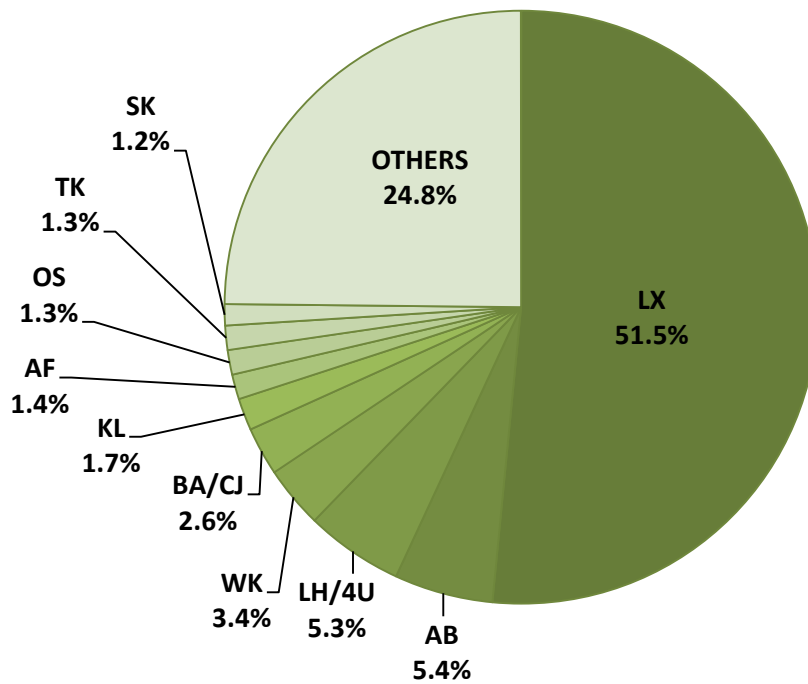
RUNWAY MOVEMENT DEVELOPMENT INITIAL ALLOCATION TO START OF SEASON - TOTALS

Reference week, movements per hour - all times UTC

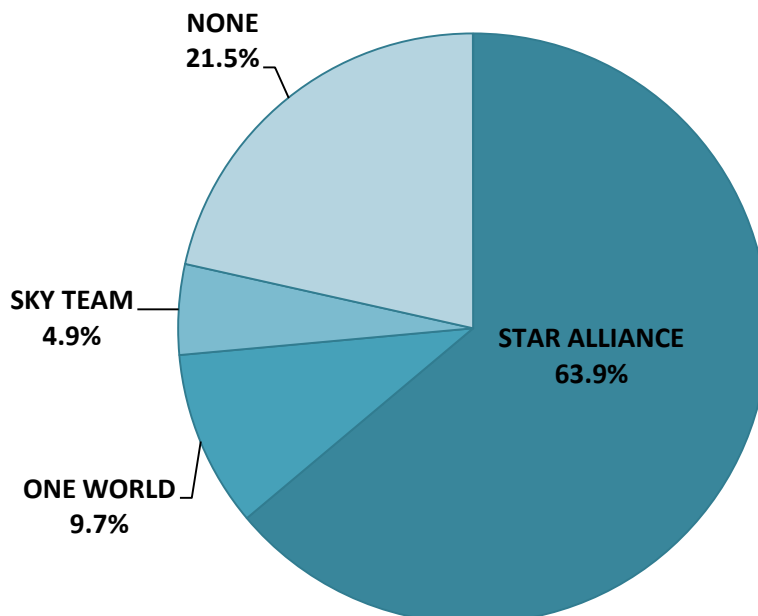


NOTE: Above histograms show the slot development from initial allocation to start of season

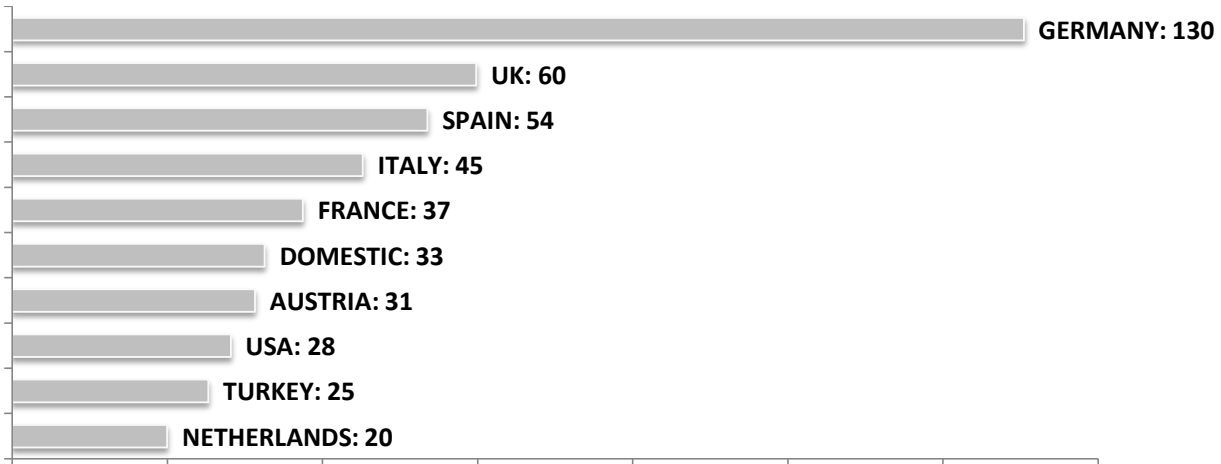
SEASONAL SLOT SHARE - 10 TOP CARRIER



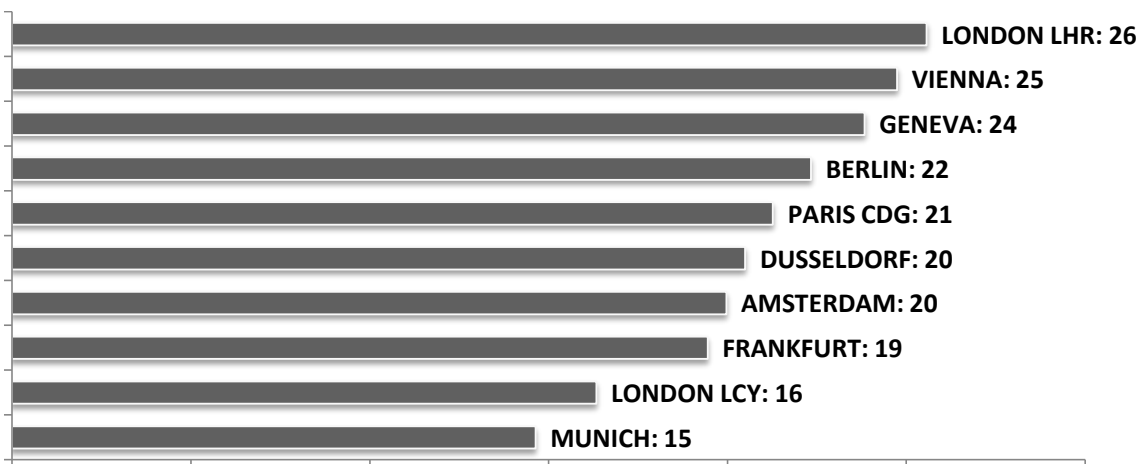
SEASONAL SLOT SHARE - PER ALLIANCES



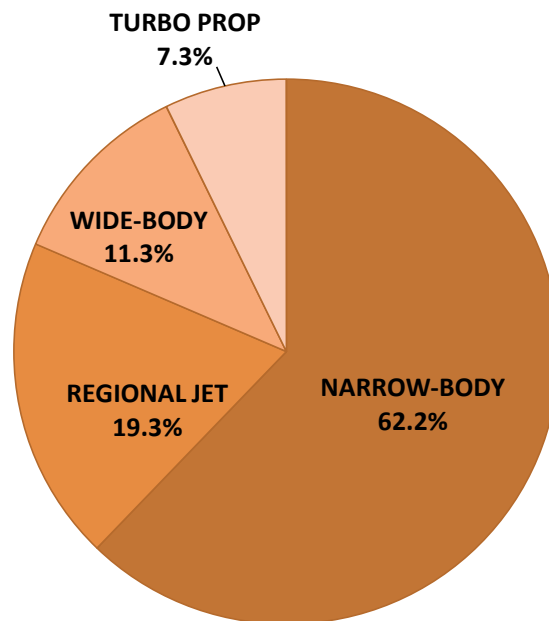
TOP 10 COUNTRIES - Number of Daily Slots



TOP 10 ROUTES - Number of Daily Slots



AIRCRAFT UTILISATION



Aircraft Sizes

- Widebody e.g. A330, A340, B747, B767, B777
- Narrowbody e.g. A32S, B737, B757, F100
- Regional Jet e.g. ARJ, CRJ, ERJ
- Turbo Prop e.g. ATR, DH4, S20