

START OF SEASON REPORT ZURICH SUMMER SEASON

29 MARCH - 24 OCTOBER 2015 (S15)

2015

KEY FIGURES	S14	S15	+/-
Cleared Airport Slots	144,539	145,333	0.5%
Seats (1000)	21,208	21,892	3.2%
Seats per Airport Slot	147	151	2.7%
Runway Utilisation	65.9%	66.3%	0.4%
Number of Carriers	81	76	-6.2%

TABLE OF CONTENTS

	Page
Management Summary	2
Overview Main Carriers	3
Runway Histograms	4,5
Slot Shares	6
Traffic Flows, Aircraft Utilisation	7

GLOSSARY OF TERMS

Allocation	The allocation of slots within declared capacity limits.
Capacity Limits	Limiting parameters declared by the Airport Operator used in the coordination process.
Seats	The number of seats based on the aircraft configuration advised by the airline.

GUIDE TO HISTOGRAMS

The histograms show the pattern of traffic by time of day against the appropriate capacity limit. Each time period consists of seven columns representing the days-of-week, Monday through Sunday. All histograms are based on a reference week.

For Summer 2015 the reference week is 14-20 September 2015.

OVERVIEW MAIN CARRIERS

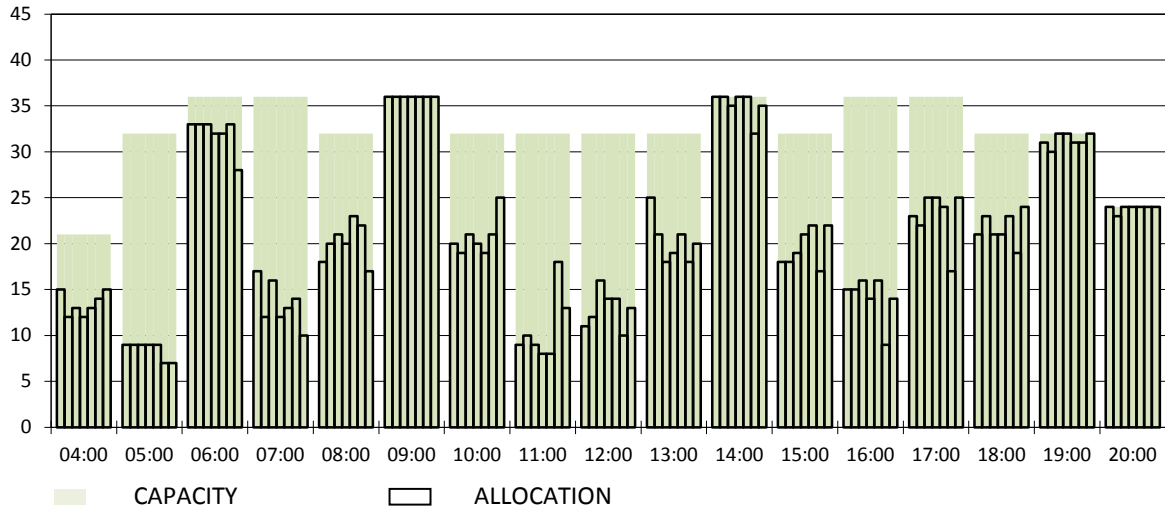
Number of average slots per week

	START OF SEASON			
	S14	S15	+/-	Share
ALL CARRIERS	4818	4844	0.5%	
Swiss Carriers	2818	2924	3.8%	60.4%
<i>where of</i>				
Swiss International Air Lines	2483	2582	4.0%	53.3%
Edelweiss Air	162	204	25.9%	4.2%
Germania Flug AG	0	49		1.0%
Helvetic	51	36	-29.4%	0.7%
Darwin Airline	94	29	-69.1%	0.6%
Belair	28	24	-14.3%	0.5%
Foreign Carriers	2000	1920	-4.0%	39.6%
<i>where of</i>				
Air Berlin	259	267	3.1%	5.5%
Lufthansa	175	135	-22.9%	2.8%
Germanwings	82	133	62.2%	2.7%
British Airways/BA CityFlyer	127	128	0.8%	2.6%
KLM	84	83	-1.2%	1.7%
Air France	66	64	-3.0%	1.3%
Turkish Airlines	64	62	-3.1%	1.3%
Niki	45	58	28.9%	1.2%
SAS	56	57	1.8%	1.2%
Austrian Airlines	64	56	-12.5%	1.2%
Maj. foreign Carriers	1022	1043	2.1%	21.5%

	SLOT RETURN			
	S14	S15	+/-	Share
	4939	4941	0.0%	
	2863	2950	3.0%	59.7%
	2504	2598	3.8%	52.6%
	162	209	29.0%	4.2%
	0	53		1.1%
	70	38	-45.7%	0.8%
	98	29	-70.4%	0.6%
	29	23	-20.7%	0.5%
	2076	1991	-4.1%	40.3%
	261	268	2.7%	5.4%
	177	136	-23.2%	2.8%
	83	133	60.2%	2.7%
	127	128	0.8%	2.6%
	84	84	0.0%	1.7%
	66	64	-3.0%	1.3%
	62	62	0.0%	1.3%
	44	58	31.8%	1.2%
	56	57	1.8%	1.2%
	64	66	3.1%	1.3%
	1024	1056	3.1%	21.4%

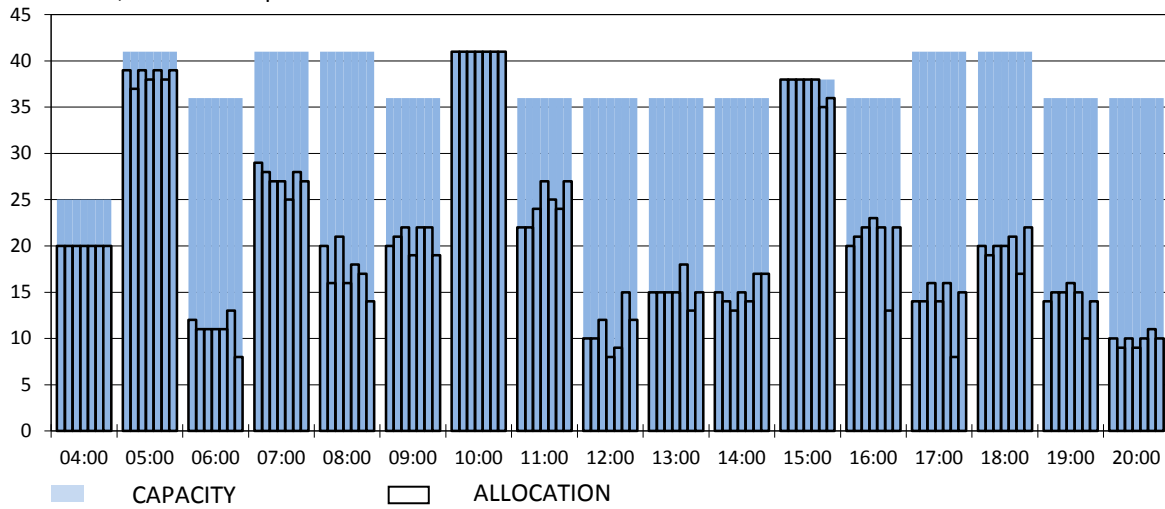
RUNWAY MOVEMENT START OF SEASON - ARRIVALS

Reference week, movements per hour - all times UTC



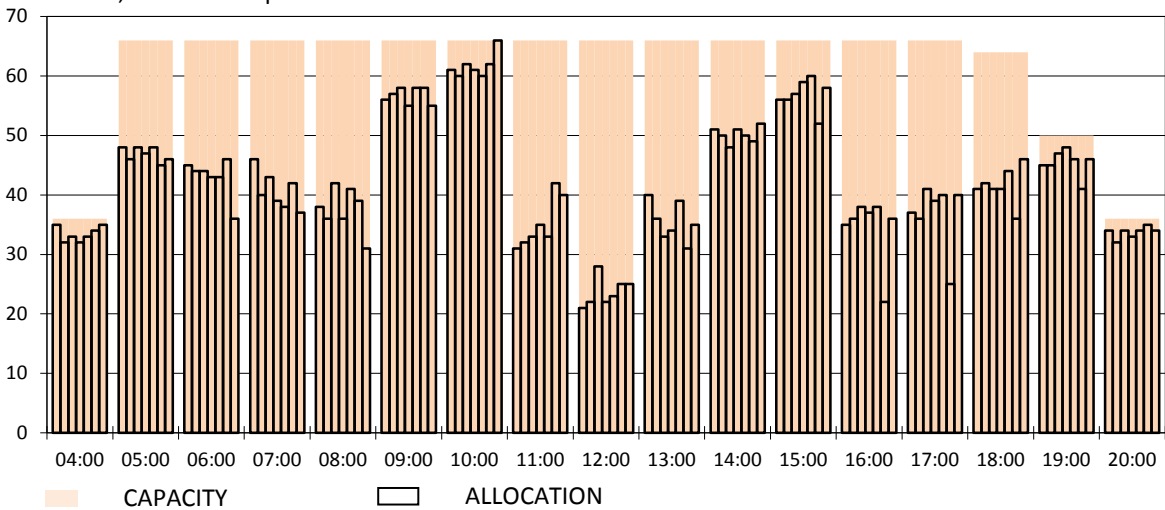
RUNWAY MOVEMENT START OF SEASON - DEPARTURES

Reference week, movements per hour - all times UTC



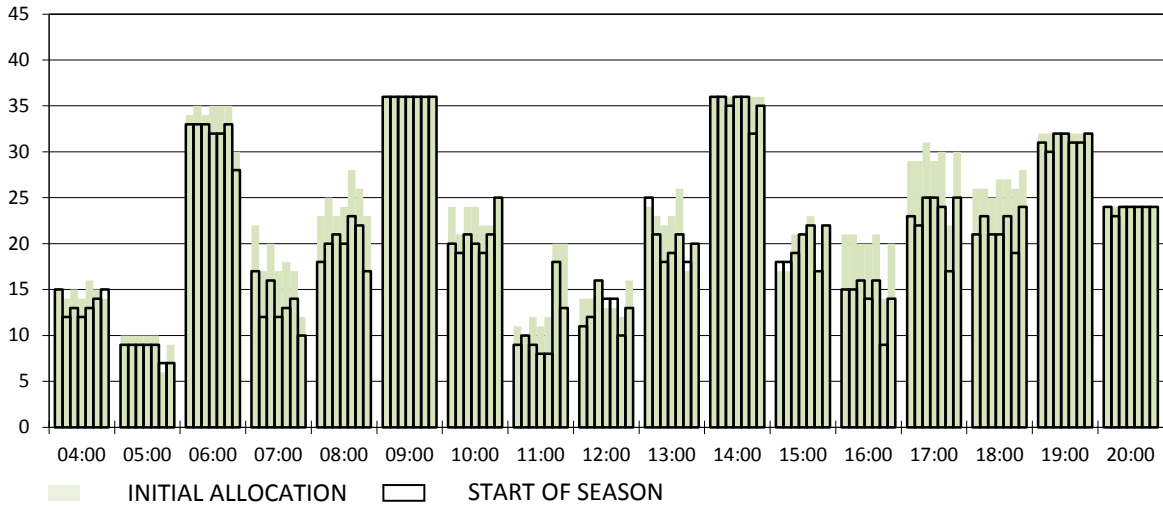
RUNWAY MOVEMENT START OF SEASON - TOTALS

Reference week, movements per hour - all times UTC



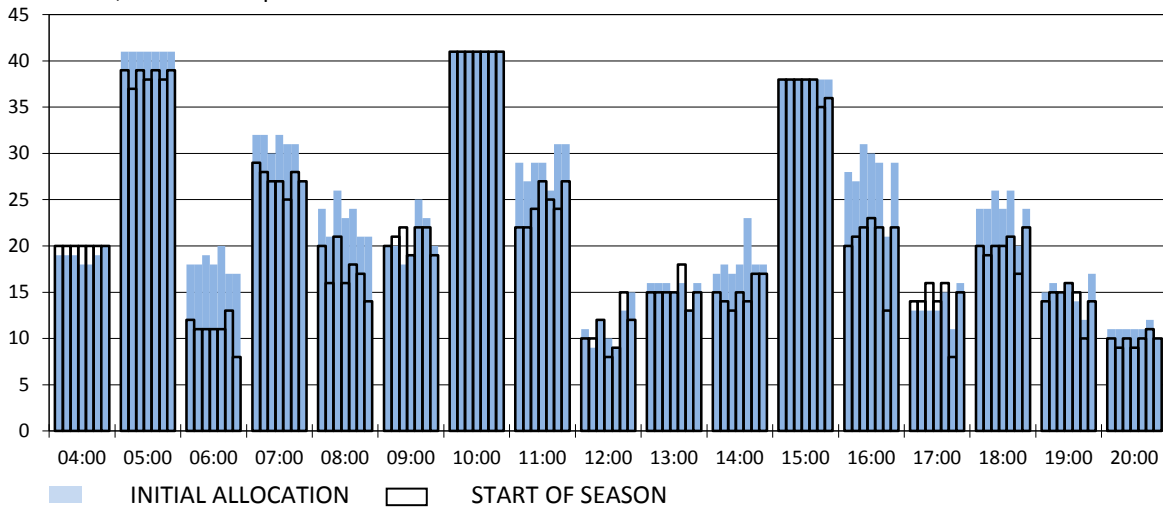
RUNWAY MOVEMENT DEVELOPMENT INITIAL ALLOCATION TO START OF SEASON - ARRIVALS

Reference week, movements per hour - all times UTC



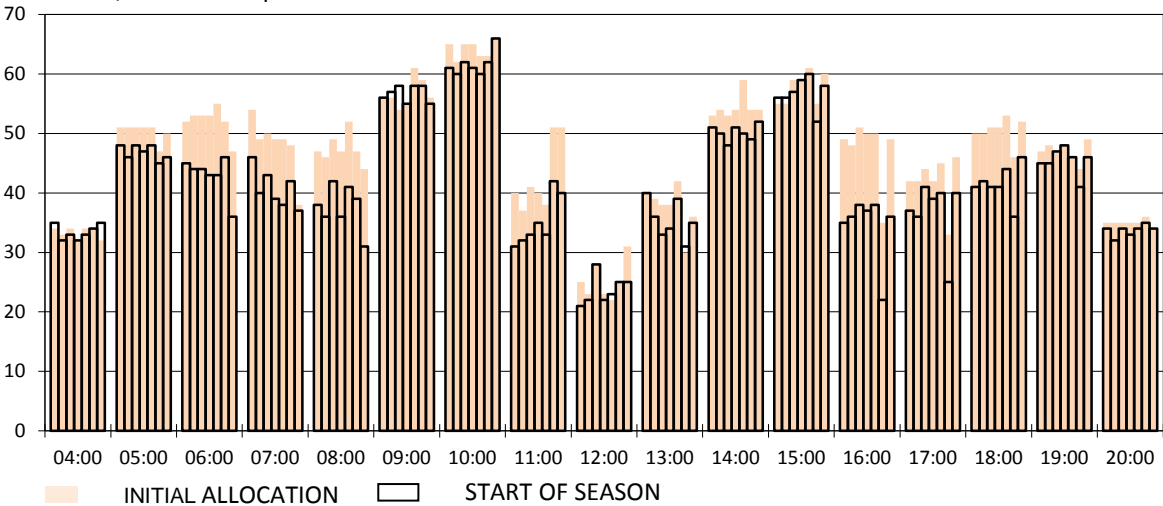
RUNWAY MOVEMENT DEVELOPMENT INITIAL ALLOCATION TO START OF SEASON - DEPARTURES

Reference week, movements per hour - all times UTC



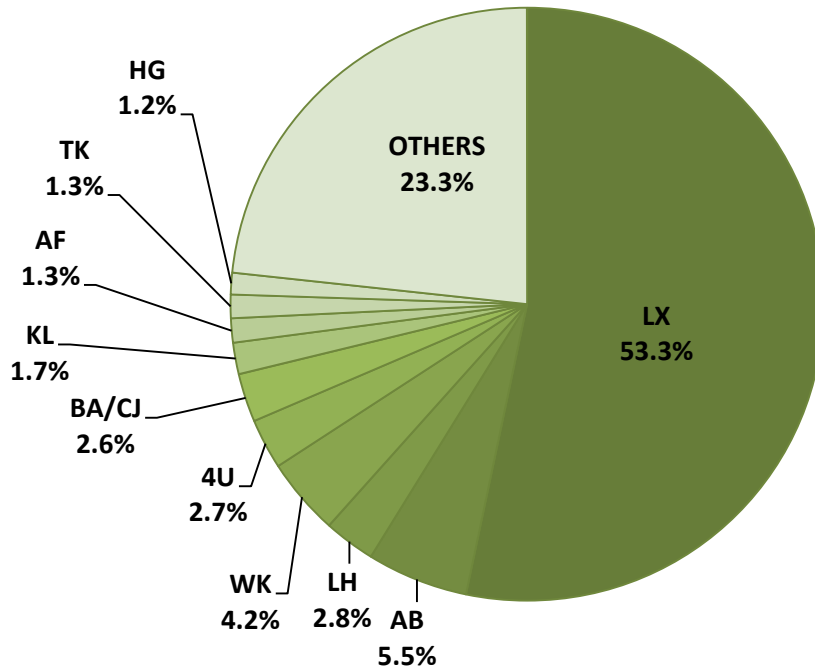
RUNWAY MOVEMENT DEVELOPMENT INITIAL ALLOCATION TO START OF SEASON - TOTALS

Reference week, movements per hour - all times UTC

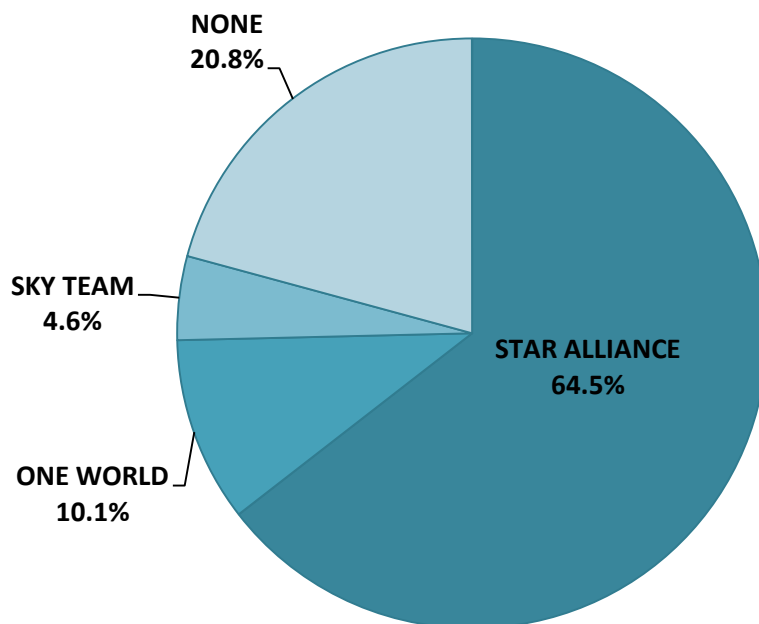


NOTE: Above histograms show the slot development from initial allocation to start of season

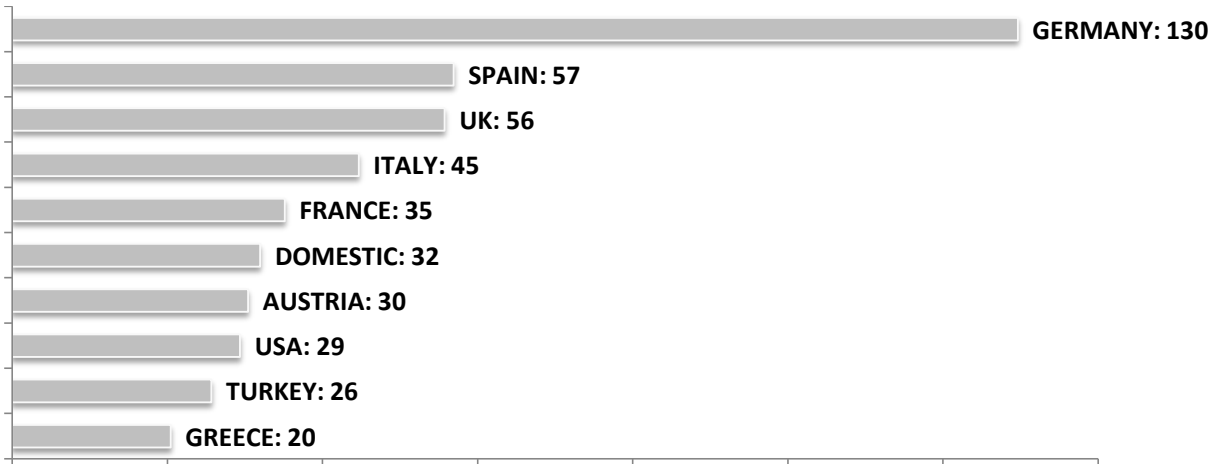
SEASONAL SLOT SHARE - 10 TOP CARRIER



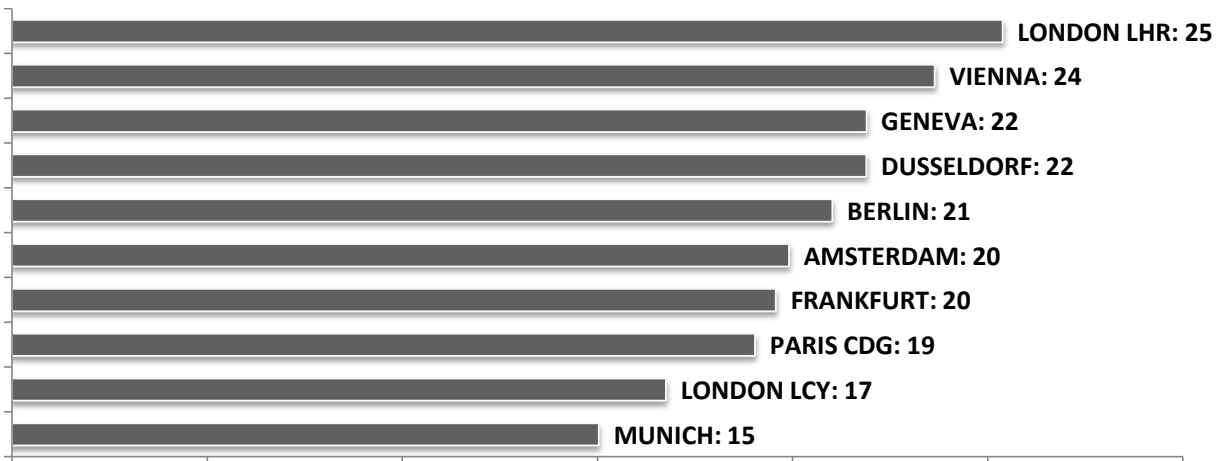
SEASONAL SLOT SHARE - PER ALLIANCES



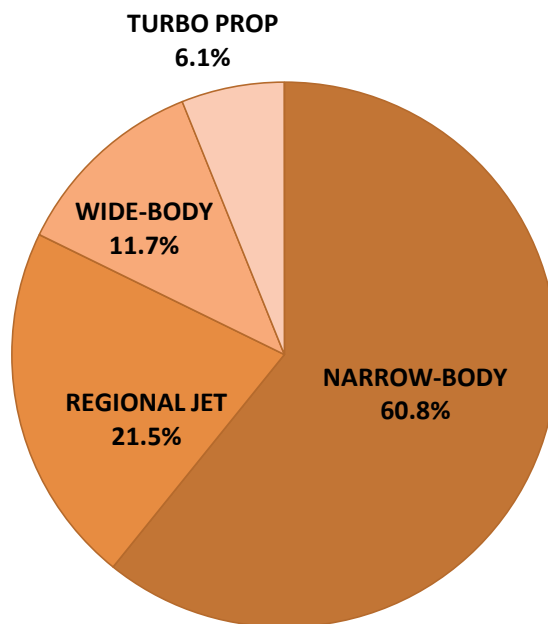
TOP 10 COUNTRIES - Number of Daily Slots



TOP 10 ROUTES - Number of Daily Slots



AIRCRAFT UTILISATION



Aircraft Sizes

- Widebody e.g. A330, A340, B747, B767, B777
- Narrowbody e.g. A32S, B737, B757, F100
- Regional Jet e.g. ARJ, CRJ, ERJ
- Turbo Prop e.g. ATR, DH4, S20