

## START OF SEASON REPORT ZURICH SUMMER SEASON

27 MARCH - 29 OCTOBER 2016 (S16)

# 2016

KEY FIGURES	S15	S16	+/-
Cleared Airport Slots	150,177	152,312	1.4%
Seats (1000)	22,622	23,664	4.6%
Seats per Airport Slot	151	155	3.1%
Runway Utilisation	66.3%	67.2%	0.9%
Number of Carriers	76	75	-1.3%

Note: For comparison reasons S15 figures (30 season weeks) are transposed to reflect S16's 31 season weeks!

### TABLE OF CONTENTS

	Page
Management Summary	2
Overview Main Carriers	3
Runway Histograms	4,5
Slot Shares	6
Traffic Flows, Aircraft Utilisation	7

### GLOSSARY OF TERMS

<b>Allocation</b>	The allocation of slots within declared capacity limits.
<b>Capacity Limits</b>	Limiting parameters declared by the Airport Operator used in the coordination process.
<b>Seats</b>	The number of seats based on the aircraft configuration advised by the airline.

### GUIDE TO HISTOGRAMS

The histograms show the pattern of traffic by time of day against the appropriate capacity limit. Each time period consists of seven columns representing the days-of-week, Monday through Sunday. All histograms are based on a reference week.

For Summer 2016 the reference week is 12-18 September 2016.

## OVERVIEW MAIN CARRIERS

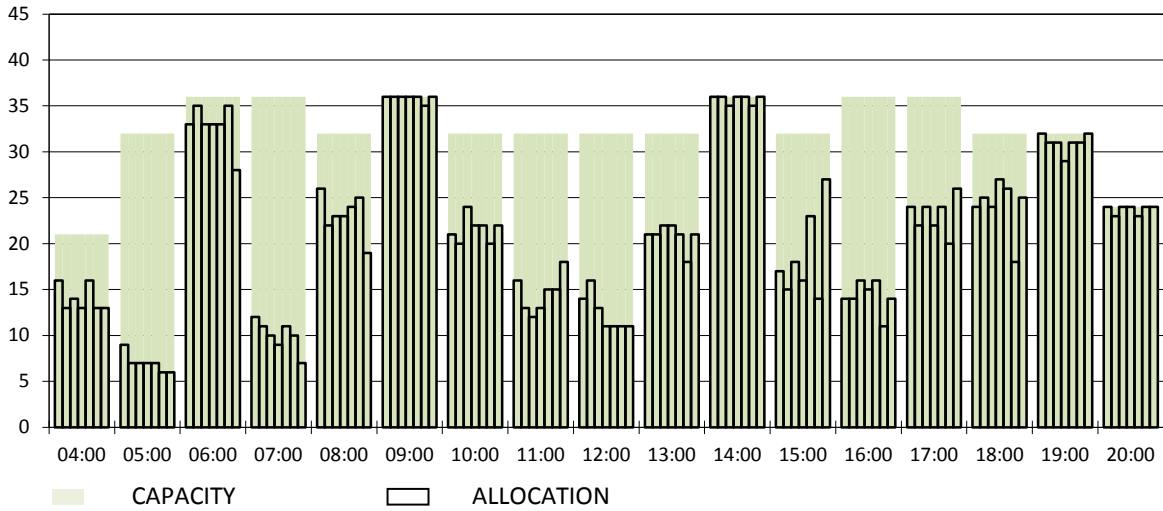
Number of average slots per week

	START OF SEASON			
	S15	S16	+/-	Share
<b>ALL CARRIERS</b>	4844	4913	1.4%	
<b>Swiss Carriers</b>	2924	2977	1.8%	60.6%
<i>where of</i>				
Swiss International Air Lines	2582	2591	0.3%	52.7%
Edelweiss Air	204	248	21.6%	5.0%
Germania Flug AG	49	62	26.5%	1.3%
Helvetic	36	30	-16.7%	0.6%
Darwin Airline	29	28	-3.4%	0.6%
Belair	24	18	-25.0%	0.4%
<b>Foreign Carriers</b>	1920	1936	0.8%	39.4%
<i>where of</i>				
Air Berlin	267	286	7.1%	5.8%
Eurowings/Germanwings	133	137	3.0%	2.8%
Lufthansa	135	135	0.0%	2.7%
British Airways/BA CityFlyer	128	121	-5.5%	2.5%
KLM	83	84	1.2%	1.7%
Vueling	33	78	136.4%	1.6%
Air France	64	63	-1.6%	1.3%
Turkish Airlines	62	62	0.0%	1.3%
Austrian Airlines	56	56	0.0%	1.1%
SAS	57	55	-3.5%	1.1%
<b>Maj. foreign Carriers</b>	1018	1077	5.8%	21.9%

SLOT RETURN			
S15	S16	+/-	Share
4941	5011	1.4%	
2950	3007	1.9%	60.0%
2598	2611	0.5%	52.1%
209	245	17.2%	4.9%
53	64	20.8%	1.3%
38	41	7.9%	0.8%
29	28	-3.4%	0.6%
23	18	-21.7%	0.4%
1991	2004	0.7%	40.0%
268	280	4.5%	5.6%
133	136	2.3%	2.7%
136	149	9.6%	3.0%
128	121	-5.5%	2.4%
84	84	0.0%	1.7%
35	86	145.7%	1.7%
64	64	0.0%	1.3%
62	62	0.0%	1.2%
66	65	-1.5%	1.3%
57	55	-3.5%	1.1%
1033	1102	6.7%	22.0%

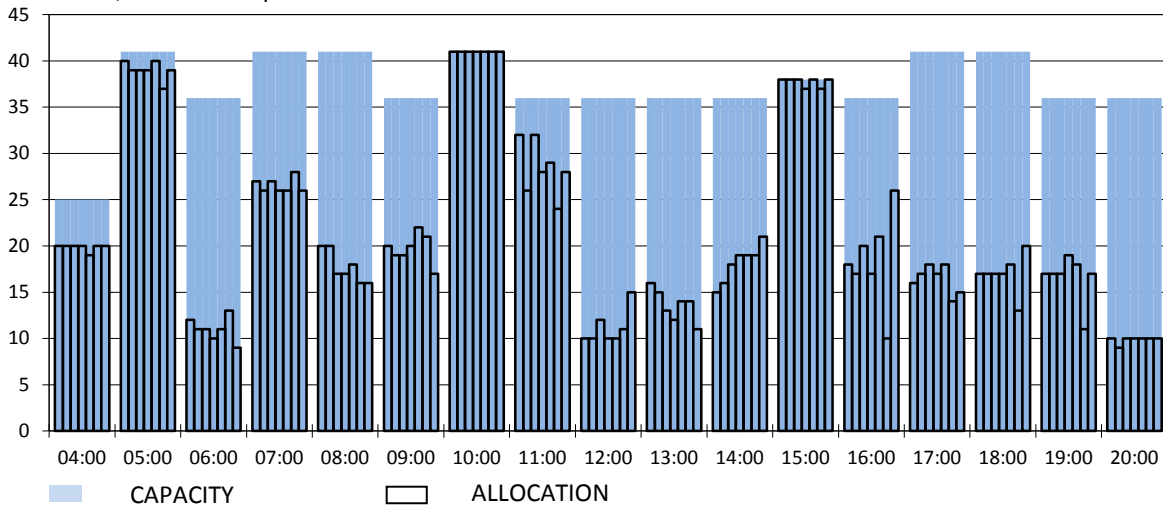
### RUNWAY MOVEMENT START OF SEASON - ARRIVALS

Reference week, movements per hour - all times UTC



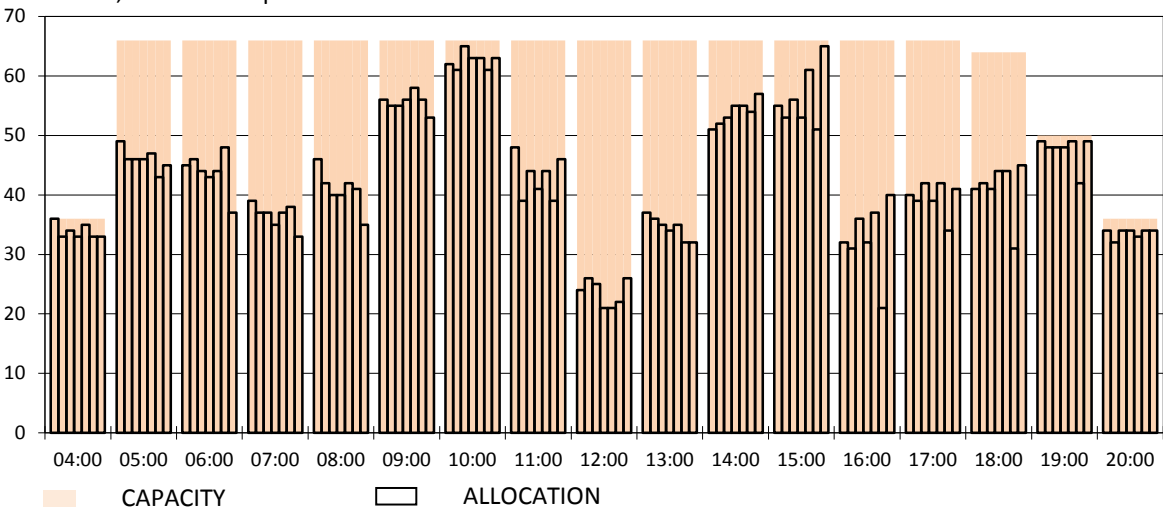
### RUNWAY MOVEMENT START OF SEASON - DEPARTURES

Reference week, movements per hour - all times UTC



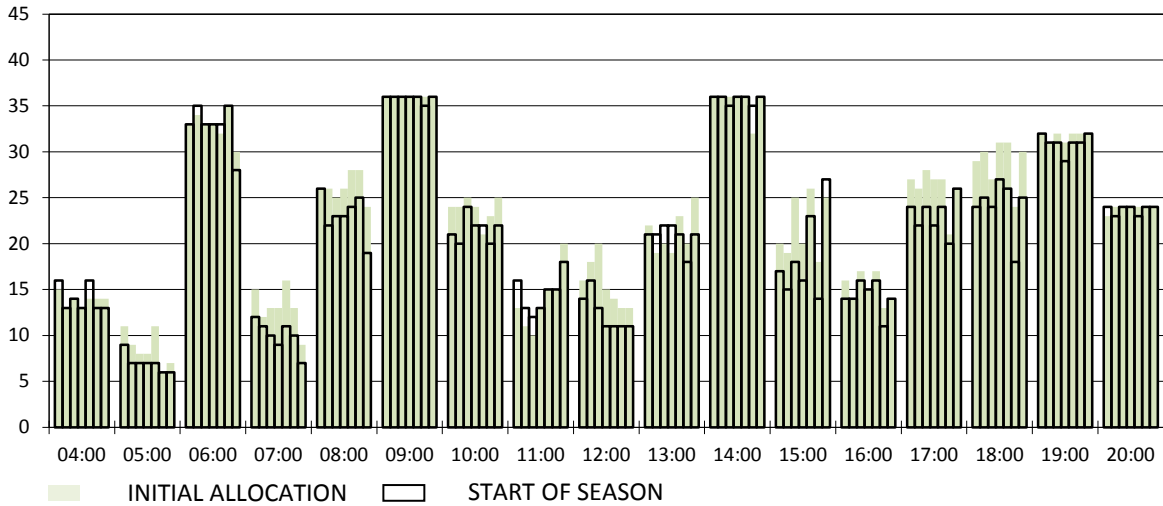
### RUNWAY MOVEMENT START OF SEASON - TOTALS

Reference week, movements per hour - all times UTC



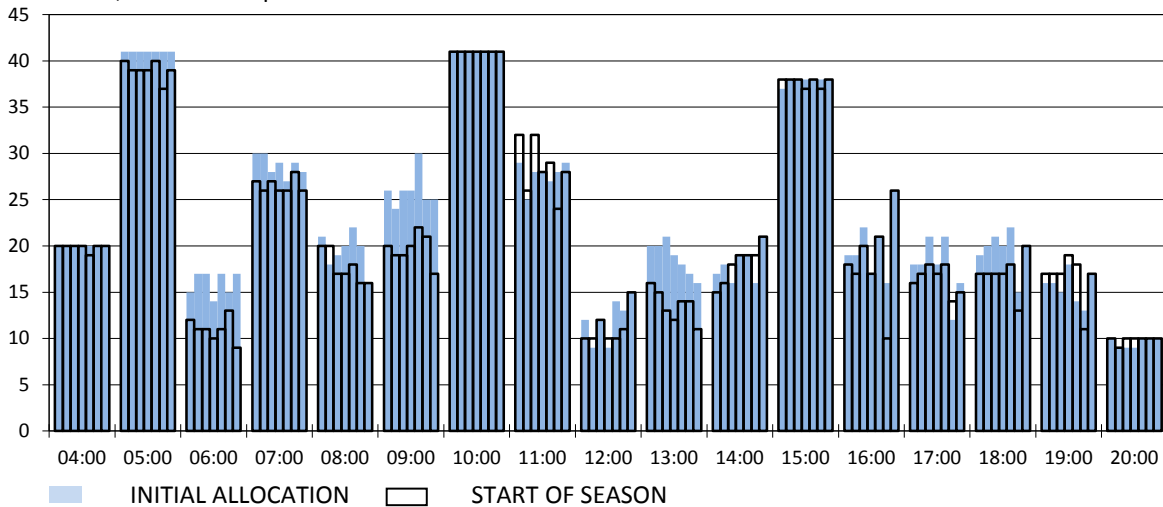
**RUNWAY MOVEMENT DEVELOPMENT INITIAL ALLOCATION TO START OF SEASON - ARRIVALS**

Reference week, movements per hour - all times UTC



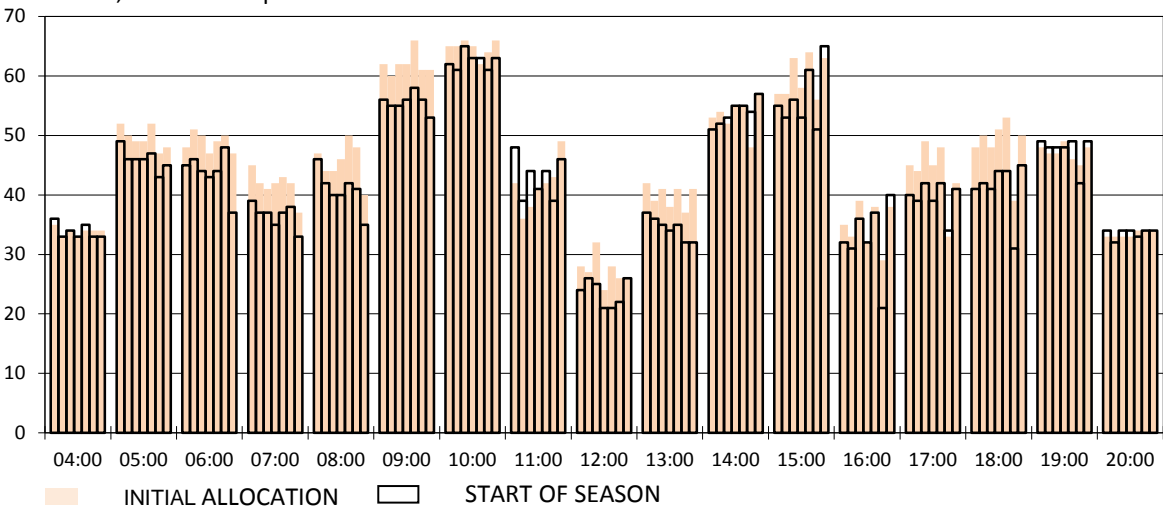
**RUNWAY MOVEMENT DEVELOPMENT INITIAL ALLOCATION TO START OF SEASON - DEPARTURES**

Reference week, movements per hour - all times UTC



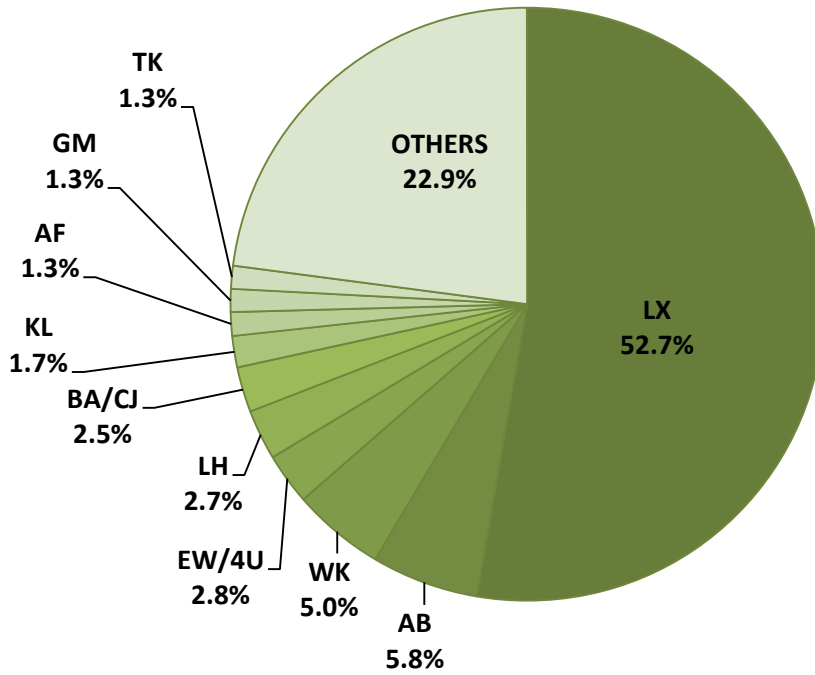
**RUNWAY MOVEMENT DEVELOPMENT INITIAL ALLOCATION TO START OF SEASON - TOTALS**

Reference week, movements per hour - all times UTC

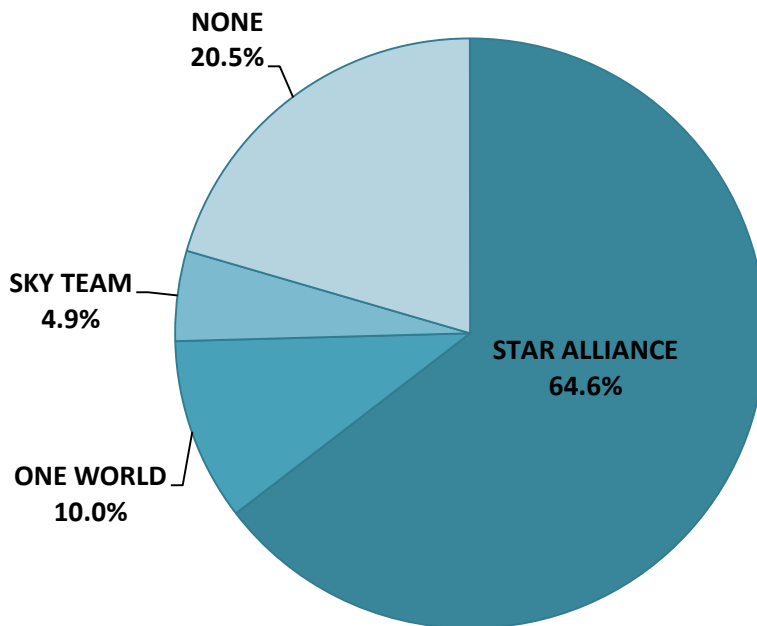


NOTE: Above histograms show the slot development from initial allocation to start of season

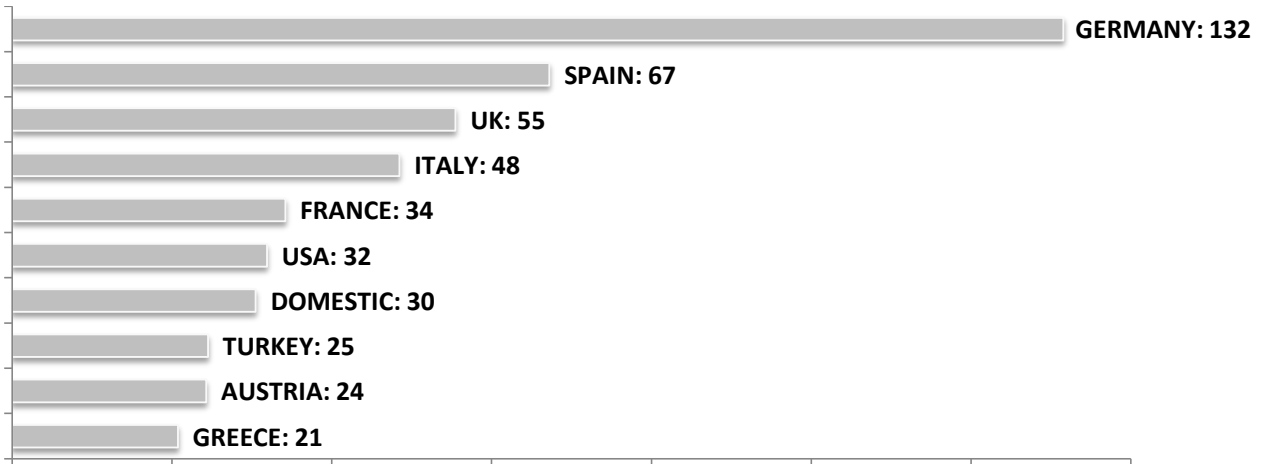
**SEASONAL SLOT SHARE - 10 TOP CARRIER**



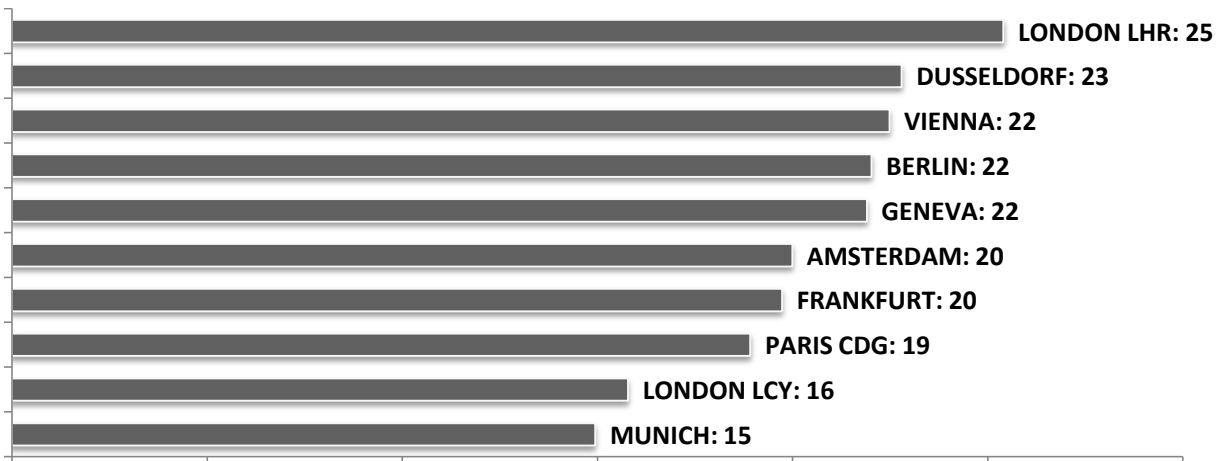
**SEASONAL SLOT SHARE - PER ALLIANCES**



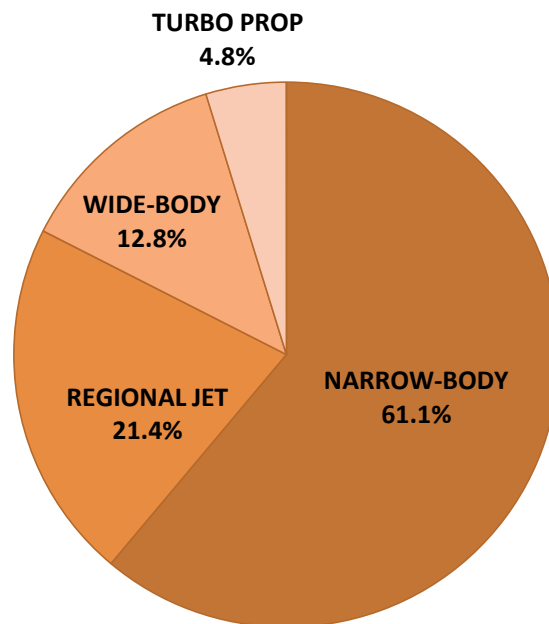
### TOP 10 COUNTRIES - Number of Daily Slots



### TOP 10 ROUTES - Number of Daily Slots



### AIRCRAFT UTILISATION



#### Aircraft Sizes

- Widebody e.g. A330, A340, B747, B767, B777
- Narrowbody e.g. A32S, B737, B757, F100
- Regional Jet e.g. ARJ, CRJ, ERJ
- Turbo Prop e.g. ATR, DH4, S20