

START OF SEASON REPORT ZURICH SUMMER SEASON

26 MARCH - 28 OCTOBER 2017 (S17)

2017

KEY FIGURES	S16	S17	+/-
Cleared Airport Slots	152,270	154,436	1.4%
Seats offered (1000)	23,660	26,067	10.2%
Seats per Airport Slot	155	169	8.6%
Runway Utilisation	67.2%	68.0%	0.8%
Number of Carriers	69	69	0

TABLE OF CONTENTS

	Page
Management Summary	2
Overview Main Carriers	3
Runway Histograms	4,5
Slot Shares	6
Traffic Flows, Aircraft Utilisation	7

GLOSSARY OF TERMS

Allocation	The allocation of slots within declared capacity limits.
Capacity Limits	Limiting parameters declared by the Airport Operator used in the coordination process.
Seats	The number of seats based on the aircraft configuration advised by the airline.

GUIDE TO HISTOGRAMS

The histograms show the pattern of traffic by time of day against the appropriate capacity limit. Each time period consists of seven columns representing the days-of-week, Monday through Sunday. All histograms are based on a reference week.

For Summer 2017 the reference week is 11-17 September 2017.

OVERVIEW MAIN CARRIERS

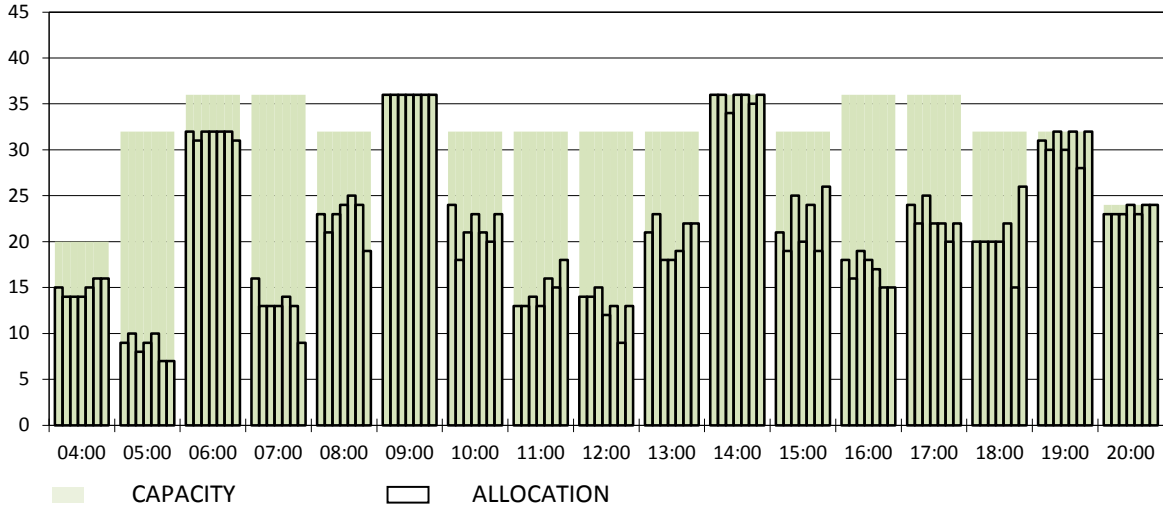
Number of average slots per week

	START OF SEASON			
	S16	S17	+/-	Share
ALL CARRIERS	4912	4982	1.4%	
Swiss Carriers	2977	2979	0.1%	59.8%
<i>where of</i>				
Swiss International Air Lines	2591	2600	0.3%	52.2%
Edelweiss Air	248	260	4.8%	5.2%
Germania Flug AG	62	74	19.4%	1.5%
Darwin Airline	28	27	-3.6%	0.5%
Helvetic	30	17	-43.3%	0.3%
Belair	18	1	-94.4%	0.0%
Foreign Carriers	1935	2003	3.5%	40.2%
<i>where of</i>				
Air Berlin	286	151	-47.2%	3.0%
Eurowings/Germanwings	137	142	3.6%	2.9%
Lufthansa	135	133	-1.5%	2.7%
British Airways/BA CityFlyer	121	120	-0.8%	2.4%
Niki	0	111		2.2%
Easyjet	44	104	136.4%	2.1%
Austrian Airlines	56	89	58.9%	1.8%
Vueling	78	85	9.0%	1.7%
KLM	84	82	-2.4%	1.6%
TAP Air Portugal	53	69	30.2%	1.4%
Maj. foreign Carriers	994	1086	9.3%	21.8%

SLOT RETURN			
S16	S17	+/-	Share
5011	4976	-0.7%	
3007	2983	-0.8%	59.9%
2611	2608	-0.1%	52.4%
245	252	2.9%	5.1%
64	73	14.1%	1.5%
28	25	-10.7%	0.5%
41	15	-63.4%	0.3%
18	10	-44.4%	0.2%
2004	1993	-0.5%	40.1%
280	135	-51.8%	2.7%
136	142	4.4%	2.9%
149	134	-10.1%	2.7%
121	120	-0.8%	2.4%
0	102		2.0%
44	104	136.4%	2.1%
65	89	36.9%	1.8%
86	93	8.1%	1.9%
84	82	-2.4%	1.6%
53	69	30.2%	1.4%
1018	1070	5.1%	21.5%

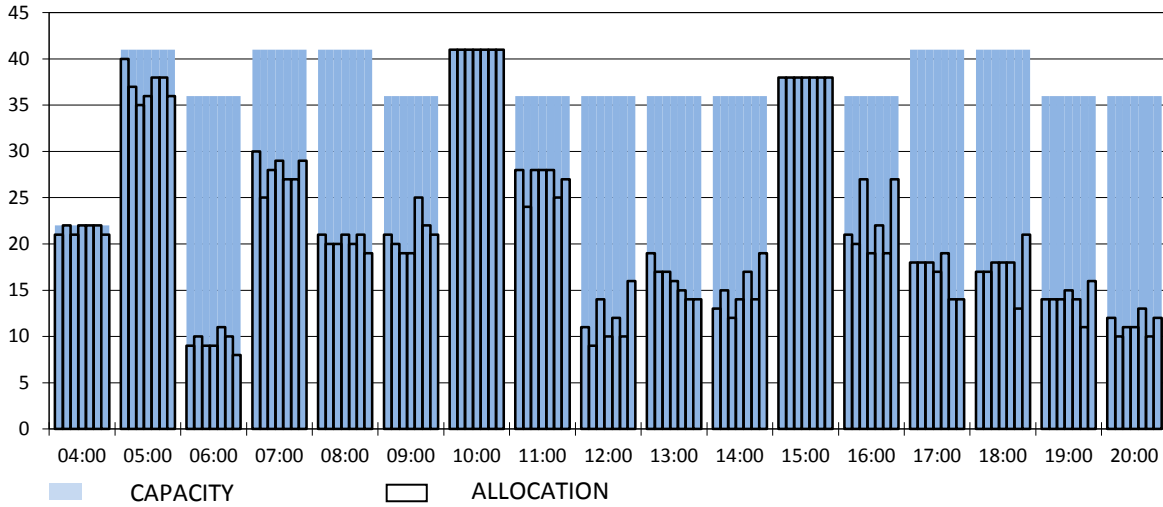
RUNWAY MOVEMENT START OF SEASON - ARRIVALS

Reference week, movements per hour - all times UTC



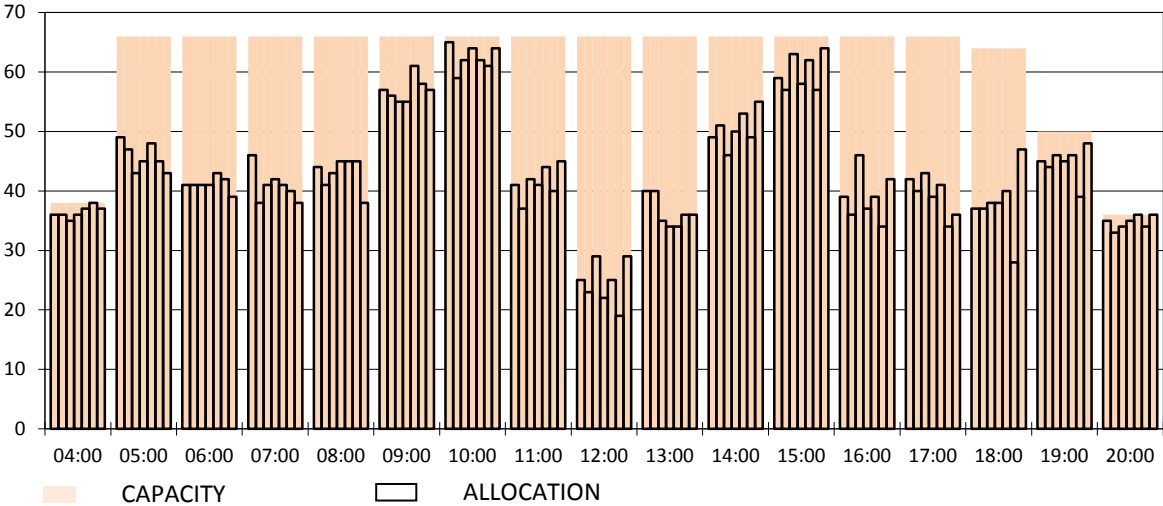
RUNWAY MOVEMENT START OF SEASON - DEPARTURES

Reference week, movements per hour - all times UTC



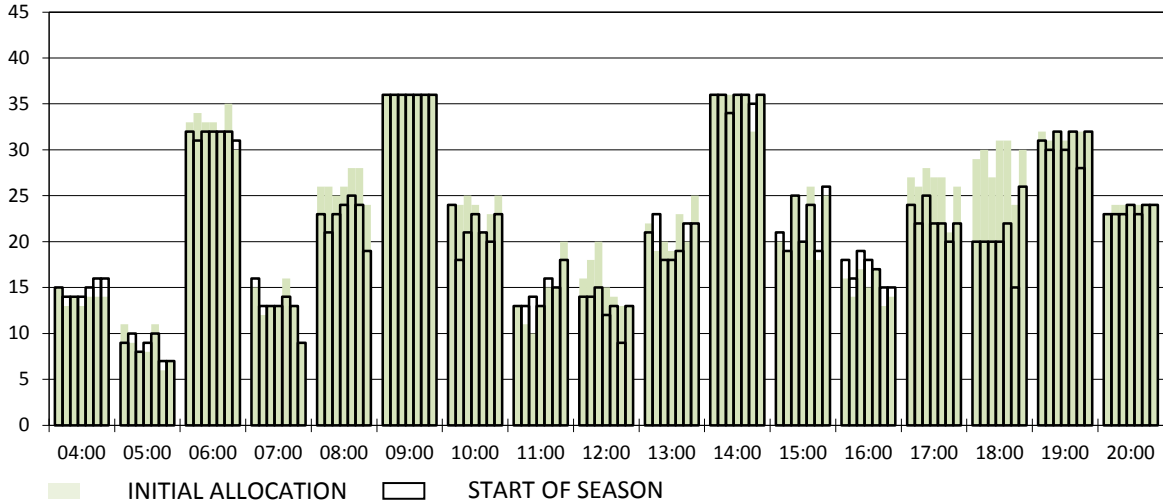
RUNWAY MOVEMENT START OF SEASON - TOTALS

Reference week, movements per hour - all times UTC



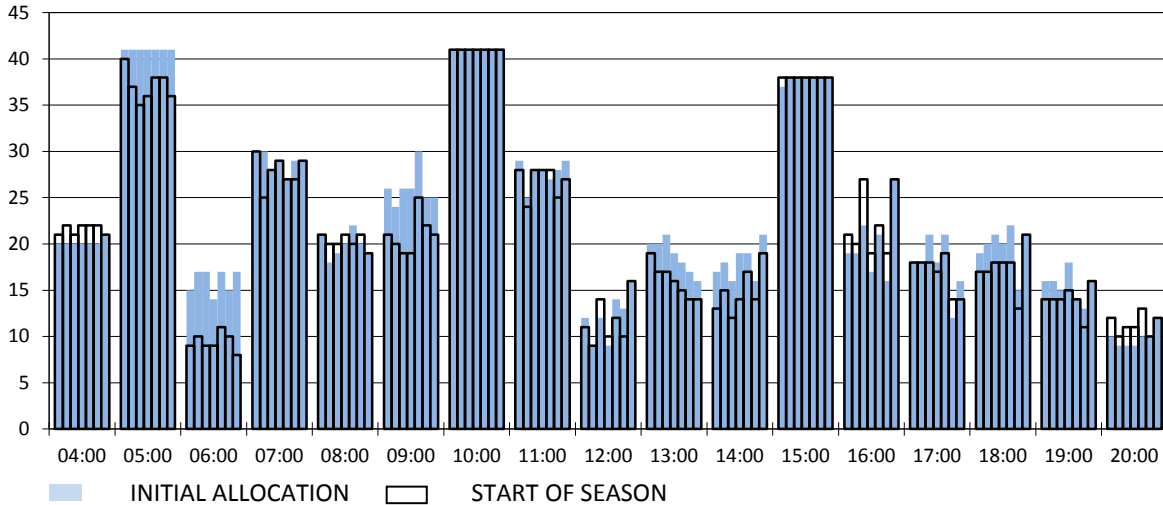
RUNWAY MOVEMENT DEVELOPMENT INITIAL ALLOCATION TO START OF SEASON - ARRIVALS

Reference week, movements per hour - all times UTC



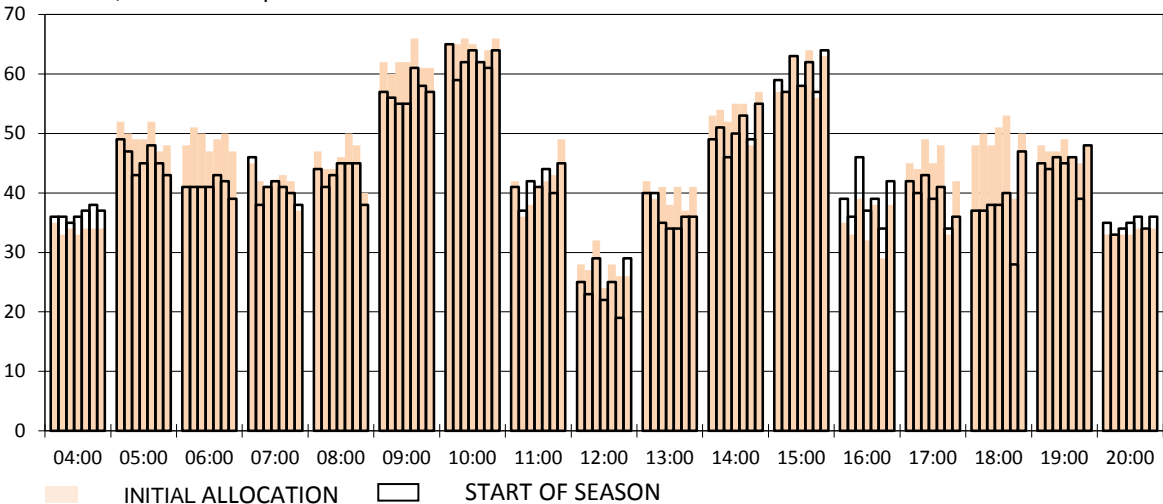
RUNWAY MOVEMENT DEVELOPMENT INITIAL ALLOCATION TO START OF SEASON - DEPARTURES

Reference week, movements per hour - all times UTC



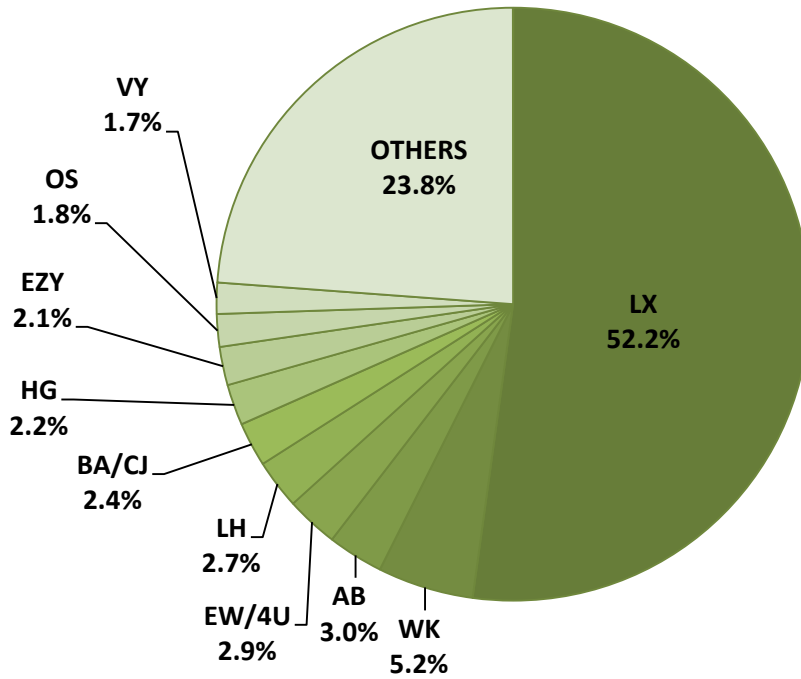
RUNWAY MOVEMENT DEVELOPMENT INITIAL ALLOCATION TO START OF SEASON - TOTALS

Reference week, movements per hour - all times UTC

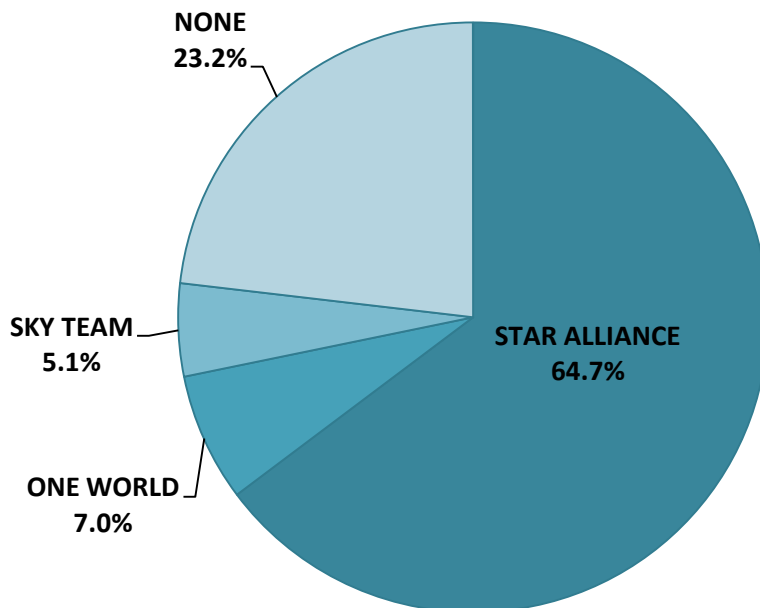


NOTE: Above histograms show the slot development from initial allocation to start of season

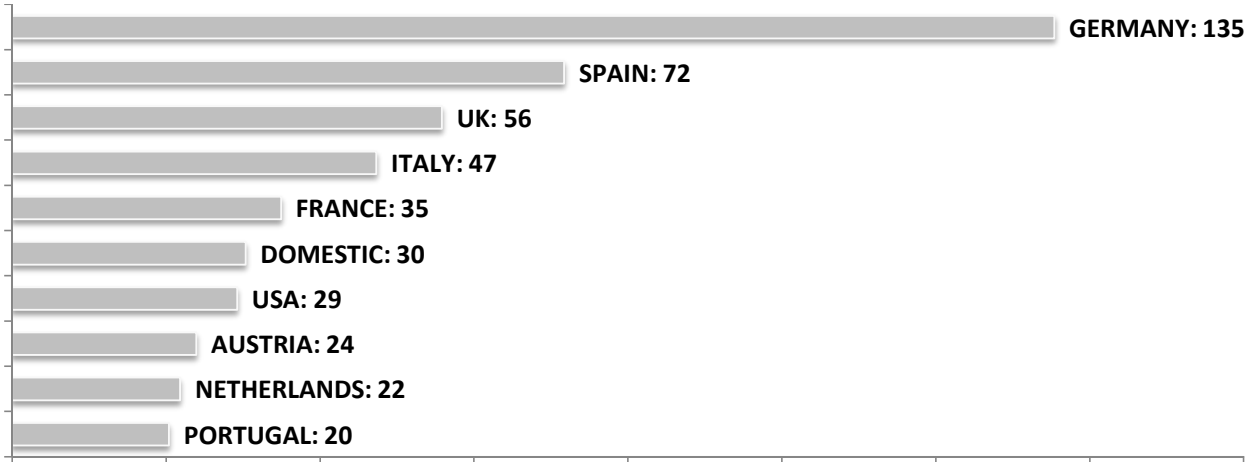
SEASONAL SLOT SHARE - 10 TOP CARRIER



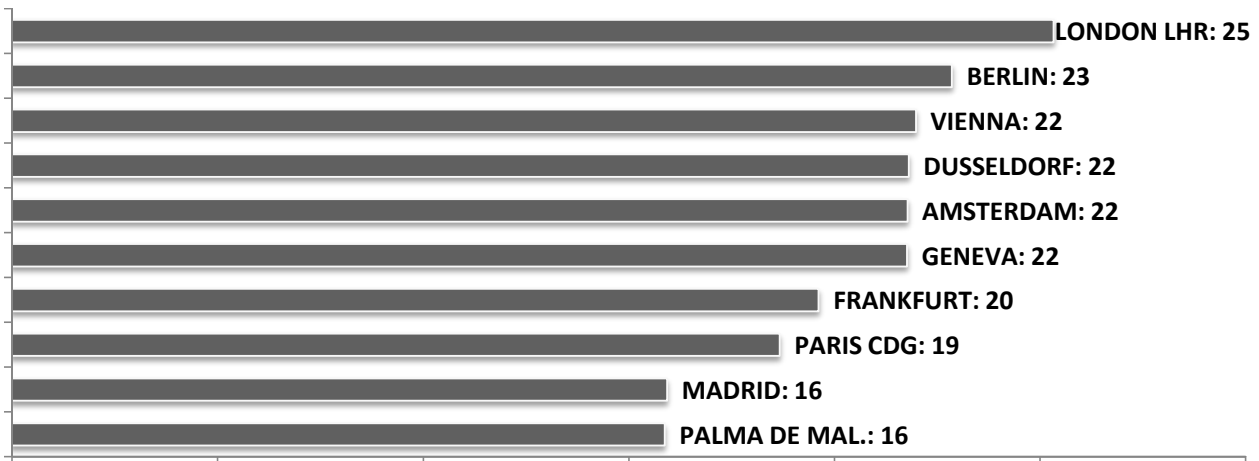
SEASONAL SLOT SHARE - PER ALLIANCES



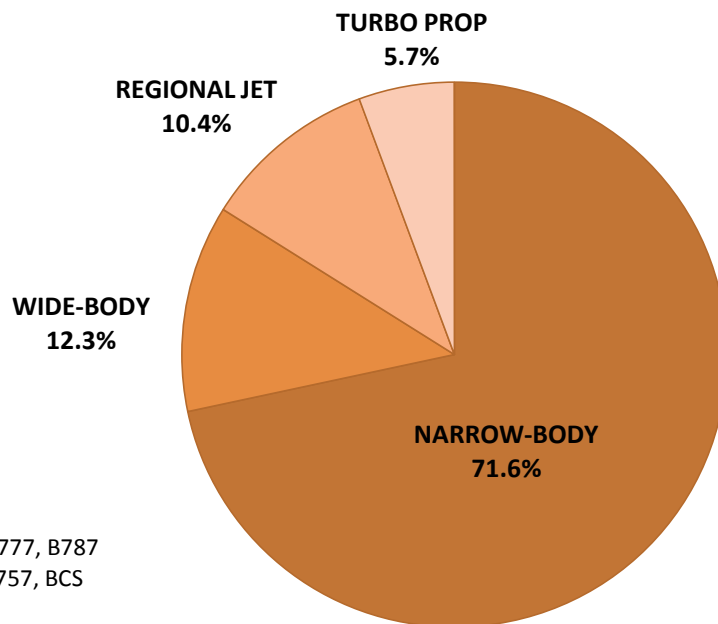
TOP 10 COUNTRIES - Number of Daily Slots



TOP 10 ROUTES - Number of Daily Slots



AIRCRAFT UTILISATION



Aircraft Sizes

- Widebody e.g. A330, A350, B777, B787
- Narrowbody e.g. A32S, B737, B757, BCS
- Regional Jet e.g. ARJ, CRJ, ERJ
- Turbo Prop e.g. ATR, DH4, S20