

START OF SEASON REPORT ZURICH SUMMER SEASON

25 MARCH - 27 OCTOBER 2018 (S18)

2018

KEY FIGURES	S17	S18	+/-
Cleared Airport Slots	154,436	162,588	5.3%
Seats offered (1000)	26,067	27,833	6.8%
Seats per Airport Slot	169	171	1.4%
Runway Utilisation	68.0%	71.6%	3.6%
Number of Carriers	69	73	+4

TABLE OF CONTENTS

	Page
Management Summary	2
Overview Main Carriers	3
Runway Histograms	4,5
Slot Shares	6
Traffic Flows, Aircraft Utilisation	7

GLOSSARY OF TERMS

Allocation	The allocation of slots within declared capacity limits.
Capacity Limits	Limiting parameters declared by the Airport Operator used in the coordination process.
Seats	The number of seats based on the aircraft configuration advised by the airline.

GUIDE TO HISTOGRAMS

The histograms show the pattern of traffic by time of day against the appropriate capacity limit. Each time period consists of seven columns representing the days-of-week, Monday through Sunday. All histograms are based on a reference week.

For Summer 2018 the reference week is 10-16 September 2018.

OVERVIEW MAIN CARRIERS

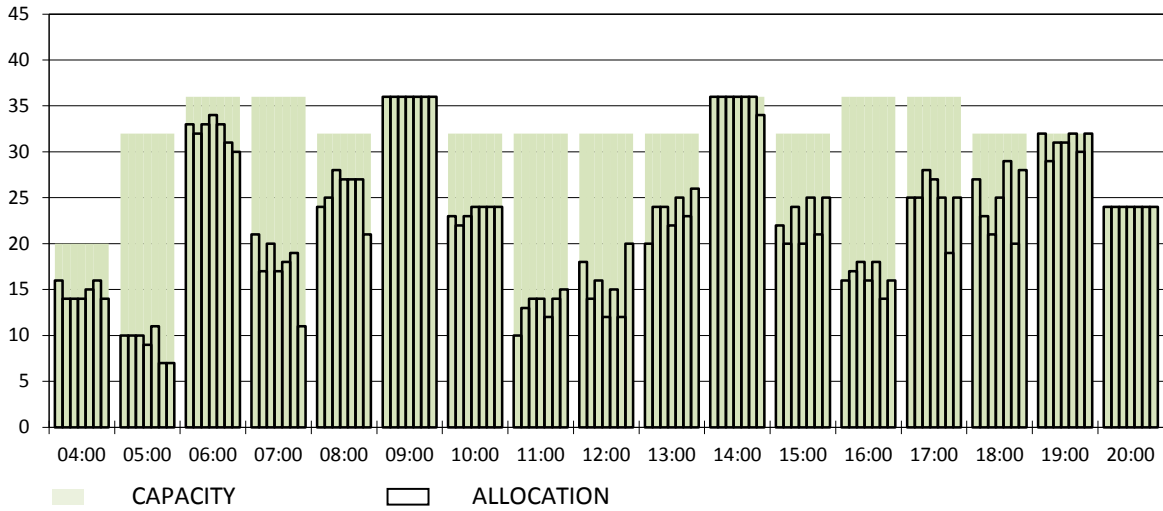
Number of average slots per week

	START OF SEASON			
	S17	S18	+/-	Share
ALL CARRIERS	4982	5245	5.3%	
Swiss Carriers	2951	3221	9.1%	61.4%
<i>where of</i>				
Swiss International Air Lines	2600	2730	5.0%	52.0%
Edelweiss Air	260	353	35.8%	6.7%
Germania Flug AG	74	124	67.6%	2.4%
Helvetic	17	14	-17.6%	0.3%
Foreign Carriers	2031	2024	-0.3%	38.6%
<i>where of</i>				
Easyjet	104	168	61.5%	3.2%
Eurowings	142	159	12.0%	3.0%
Lufthansa	133	135	1.5%	2.6%
British Airways/BA CityFlyer	120	119	-0.8%	2.3%
Vueling	85	95	11.8%	1.8%
Austrian Airlines	89	90	1.1%	1.7%
KLM	82	82	0.0%	1.6%
Adria Airways	40	72	80.0%	1.4%
TAP Air Portugal	69	69	0.0%	1.3%
Scandinavian Airlines	63	66	4.8%	1.3%
Maj. foreign Carriers	927	1055	13.8%	20.1%

SLOT RETURN			
S17	S18	+/-	Share
4976	5396	8.4%	
2948	3257	10.5%	60.4%
2608	2802	7.4%	51.9%
252	344	36.5%	6.4%
73	102	39.7%	1.9%
15	9	-40.0%	0.2%
2028	2139	5.5%	39.6%
104	194	86.5%	3.6%
142	169	19.0%	3.1%
134	137	2.2%	2.5%
120	119	-0.8%	2.2%
93	98	5.4%	1.8%
89	90	1.1%	1.7%
82	82	0.0%	1.5%
40	81	102.5%	1.5%
69	69	0.0%	1.3%
63	66	4.8%	1.2%
936	1105	18.1%	20.5%

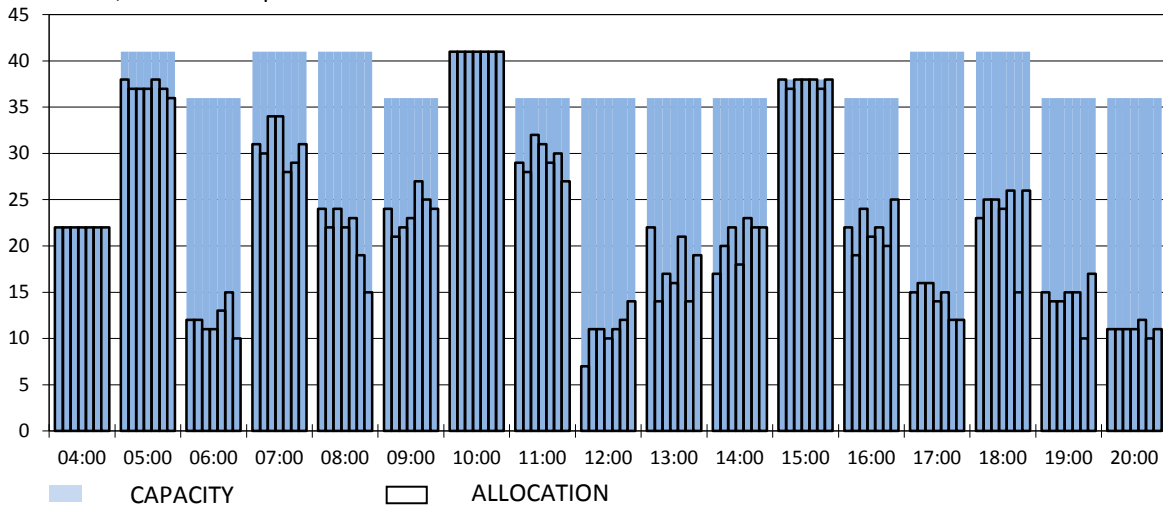
RUNWAY MOVEMENT START OF SEASON - ARRIVALS

Reference week, movements per hour - all times UTC



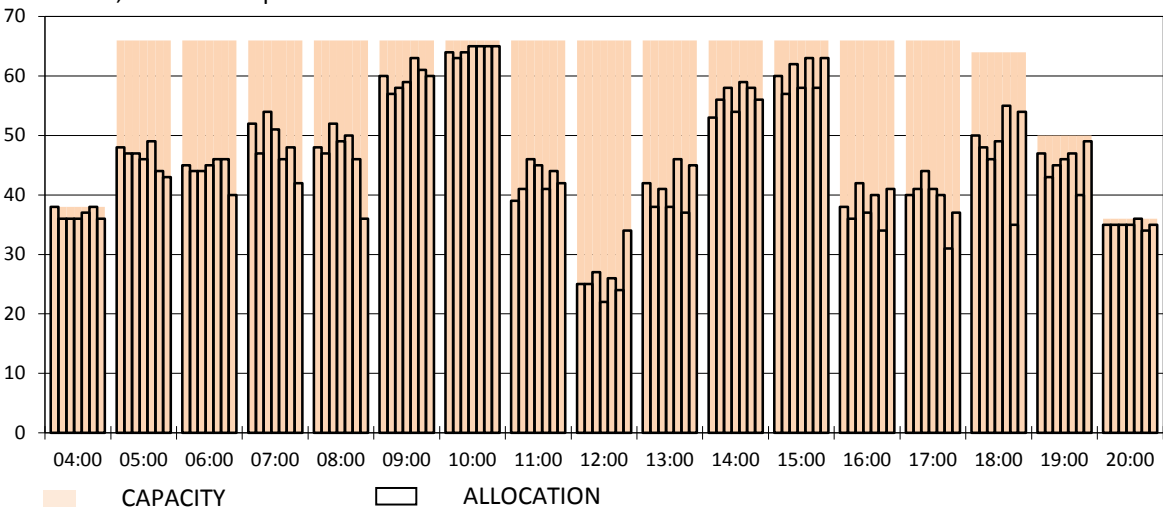
RUNWAY MOVEMENT START OF SEASON - DEPARTURES

Reference week, movements per hour - all times UTC



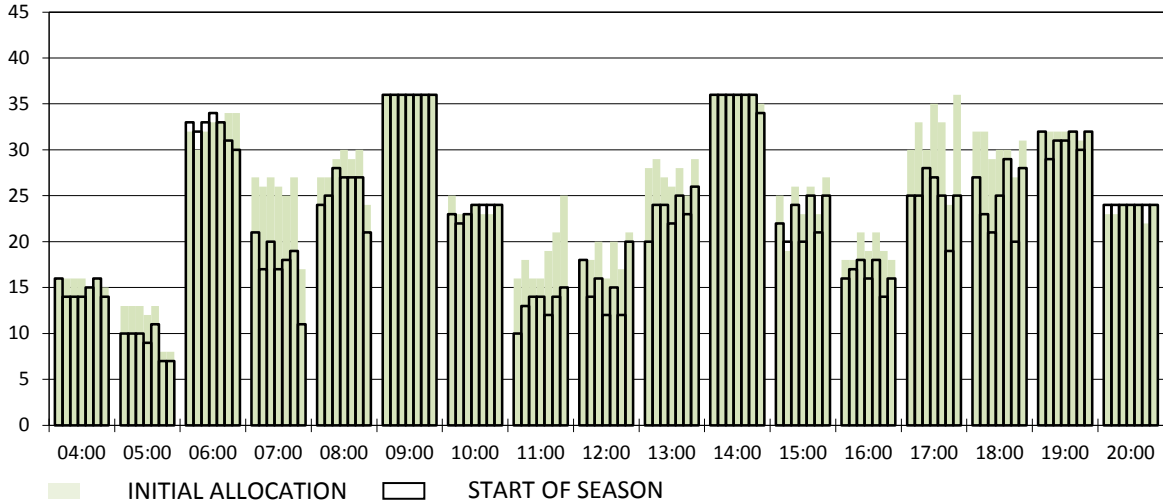
RUNWAY MOVEMENT START OF SEASON - TOTALS

Reference week, movements per hour - all times UTC



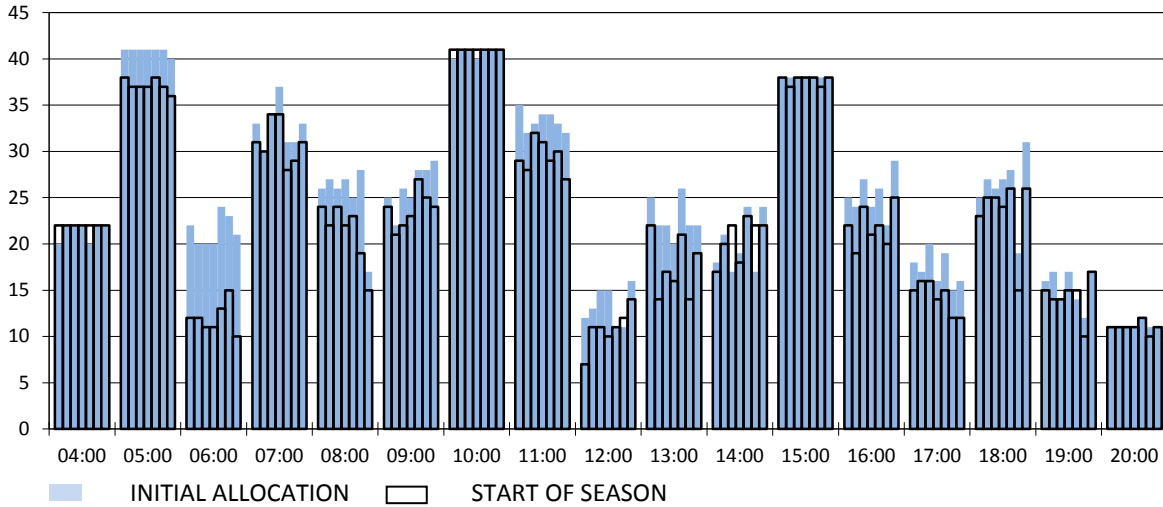
RUNWAY MOVEMENT DEVELOPMENT INITIAL ALLOCATION TO START OF SEASON - ARRIVALS

Reference week, movements per hour - all times UTC



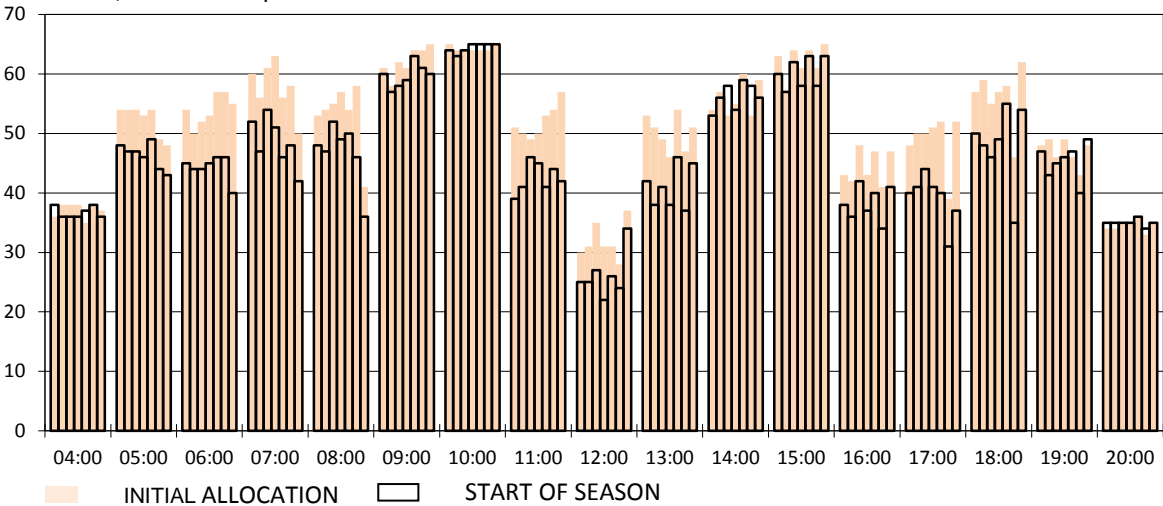
RUNWAY MOVEMENT DEVELOPMENT INITIAL ALLOCATION TO START OF SEASON - DEPARTURES

Reference week, movements per hour - all times UTC



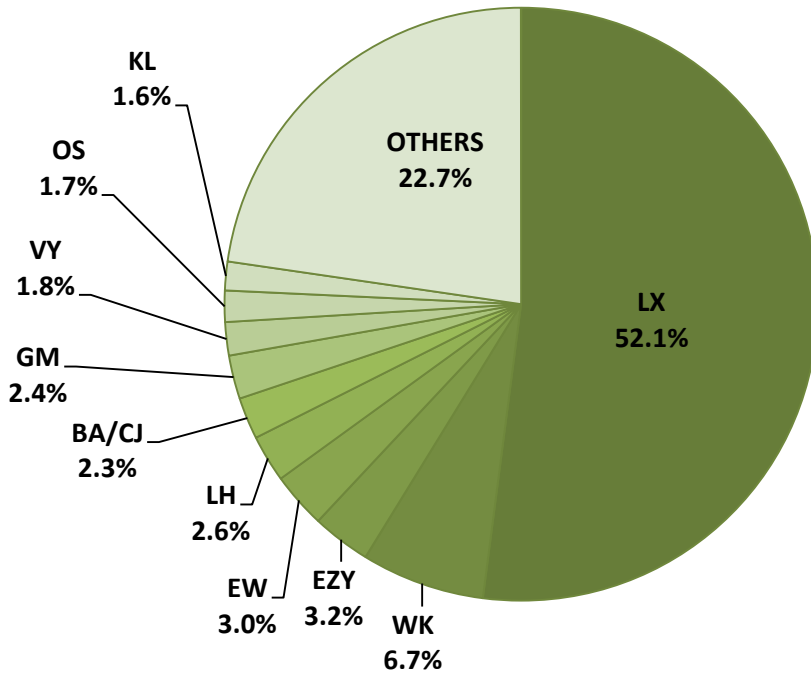
RUNWAY MOVEMENT DEVELOPMENT INITIAL ALLOCATION TO START OF SEASON - TOTALS

Reference week, movements per hour - all times UTC

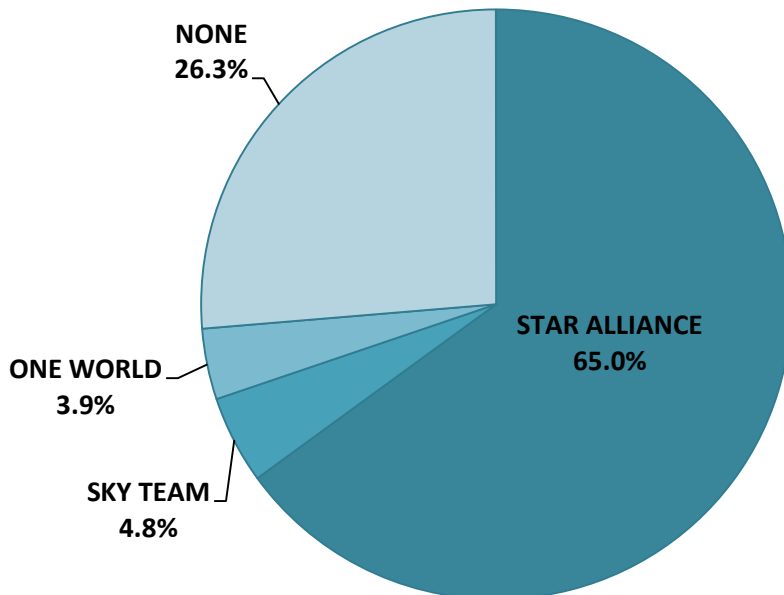


NOTE: Above histograms show the slot development from initial allocation to start of season

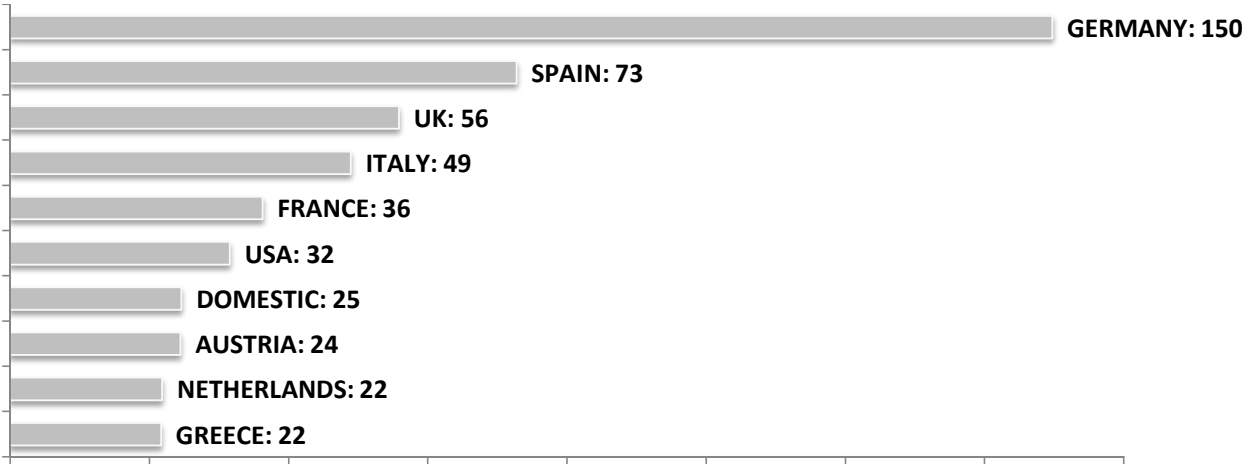
SEASONAL SLOT SHARE - 10 TOP CARRIER



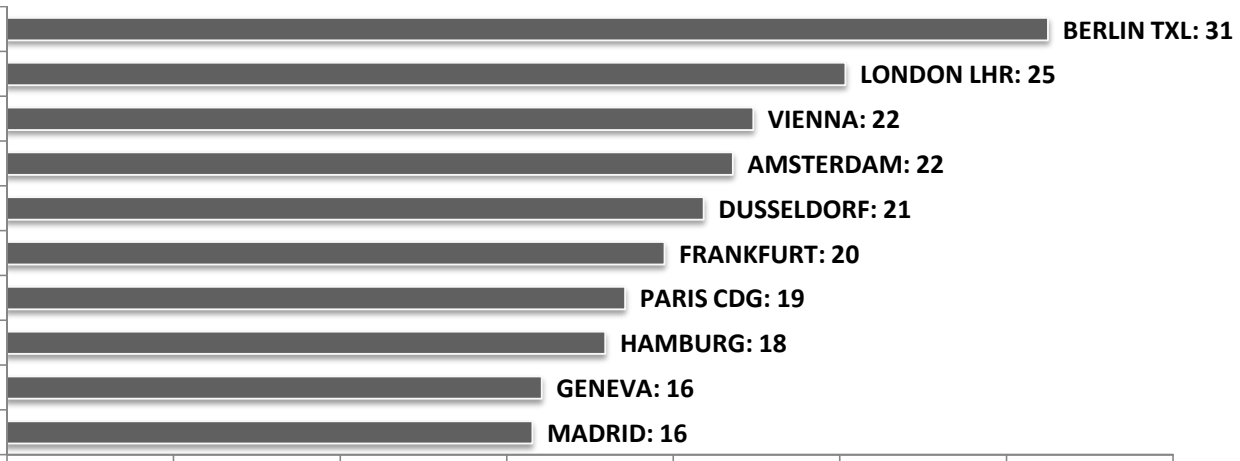
SEASONAL SLOT SHARE - PER ALLIANCES



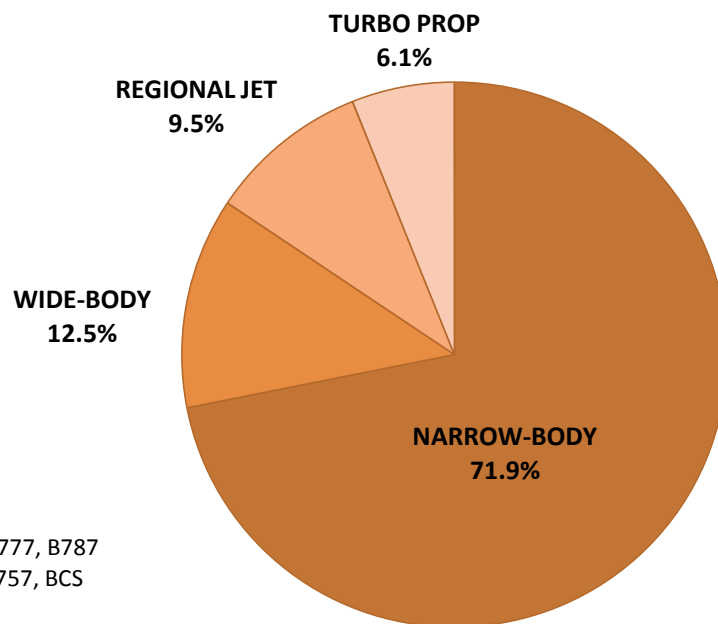
TOP 10 COUNTRIES - Number of Daily Slots



TOP 10 ROUTES - Number of Daily Slots



AIRCRAFT UTILISATION



Aircraft Sizes
 Widebody e.g. A330, A350, B777, B787
 Narrowbody e.g. A32S, B737, B757, BCS
 Regional Jet e.g. ARJ, CRJ, ERJ
 Turbo Prop e.g. ATR, DH4, S20