

START OF SEASON REPORT ZURICH WINTER SEASON

25 OCTOBER 2015 - 26 MARCH 2016 (W15)

2015

KEY FIGURES	W14	W15	+/-
Cleared Airport Slots	90,996	91,272	0.3%
Seats (1000)	13,347	14,159	6.1%
Seats per Airport Slot	147	155	5.8%
Runway Utilisation	56.6%	56.8%	0.2%
Number of Carriers	61	62	1.6%

TABLE OF CONTENTS

	Page
Management Summary	2
Overview Main Carriers	3
Runway Histograms	4,5
Slot Shares	6
Traffic Flows, Aircraft Utilisation	7

GLOSSARY OF TERMS

Allocation	The allocation of slots within declared capacity limits.
Capacity Limits	Limiting parameters declared by the Airport Operator used in the coordination process.
Seats	The number of seats based on the aircraft configuration advised by the airline.

GUIDE TO HISTOGRAMS

The histograms show the pattern of traffic by time of day against the appropriate capacity limit. Each time period consists of seven columns representing the days-of-week, Monday through Sunday. All histograms are based on a reference week.

For Winter 2015 the reference week is 15-21 February 2016.

OVERVIEW MAIN CARRIERS

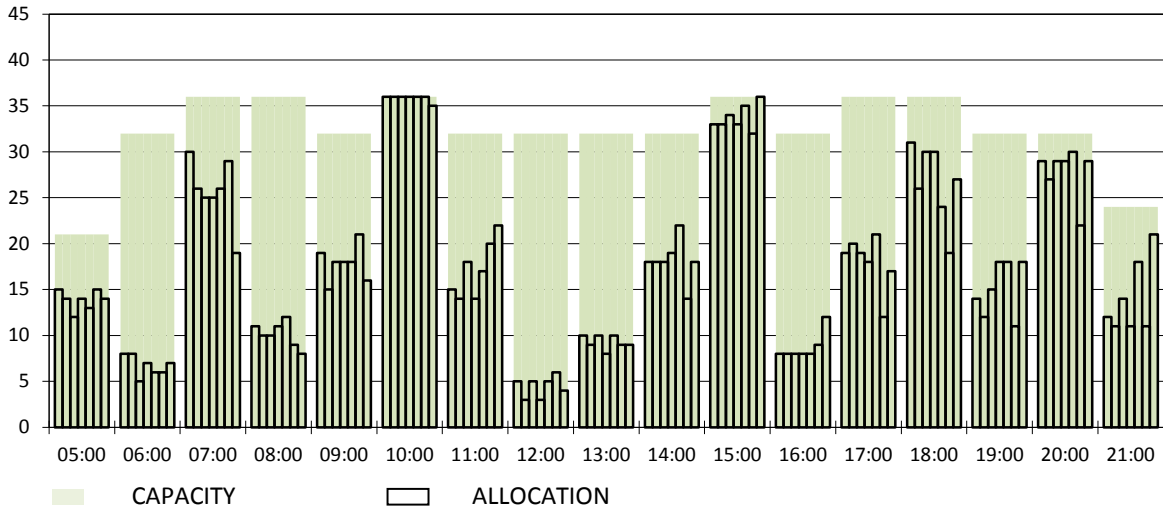
Number of average slots per week

	START OF SEASON			
	W14	W15	+/-	Share
ALL CARRIERS	4136	4149	0.3%	
Swiss Carriers	2537	2562	1.0%	61.7%
<i>where of</i>				
Swiss International Air Lines	2245	2348	4.6%	56.6%
Edelweiss Air	92	110	19.6%	2.7%
Germania Flug AG	0	35		0.8%
Darwin Airline	157	28	-82.2%	0.7%
Helvetic	20	24	20.0%	0.6%
Belair	23	17	-26.1%	0.4%
Foreign Carriers	1599	1587	-0.8%	38.3%
<i>where of</i>				
Air Berlin	169	166	-1.8%	4.0%
Eurowings/Germanwings	113	138	22.1%	3.3%
Lufthansa	151	129	-14.6%	3.1%
British Airways/BA CityFlyer	125	123	-1.6%	3.0%
KLM	77	77	0.0%	1.9%
Air France	66	62	-6.1%	1.5%
Turkish Airlines	48	56	16.7%	1.3%
SAS	58	56	-3.4%	1.3%
TAP Air Portugal	51	50	-2.0%	1.2%
Austrian Airlines	49	49	0.0%	1.2%
Maj. foreign Carriers	907	906	-0.1%	21.8%

	SLOT RETURN			
	W14	W15	+/-	Share
	4193	4178	-0.4%	
	2554	2592	1.5%	62.0%
	2252	2368	5.2%	56.7%
	92	118	28.3%	2.8%
	0	35		0.8%
	161	28	-82.6%	0.7%
	23	26	13.0%	0.6%
	26	17	-34.6%	0.4%
	1639	1586	-3.2%	38.0%
	164	163	-0.6%	3.9%
	87	138	58.6%	3.3%
	177	129	-27.1%	3.1%
	124	122	-1.6%	2.9%
	77	77	0.0%	1.8%
	66	62	-6.1%	1.5%
	48	56	16.7%	1.3%
	57	55	-3.5%	1.3%
	50	50	0.0%	1.2%
	49	48	-2.0%	1.1%
	899	900	0.1%	21.5%

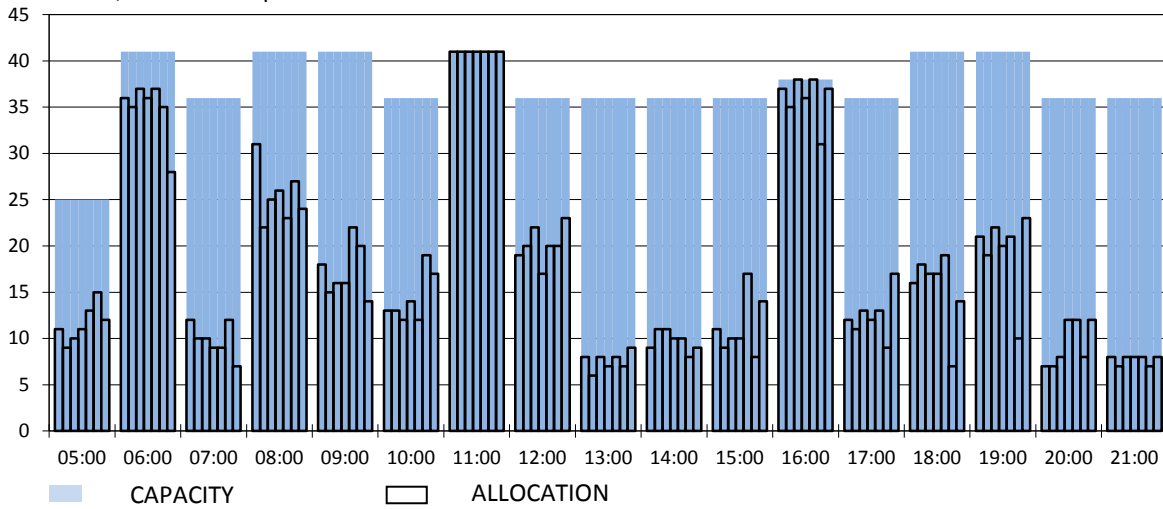
RUNWAY MOVEMENT START OF SEASON - ARRIVALS

Reference week, movements per hour - all times UTC



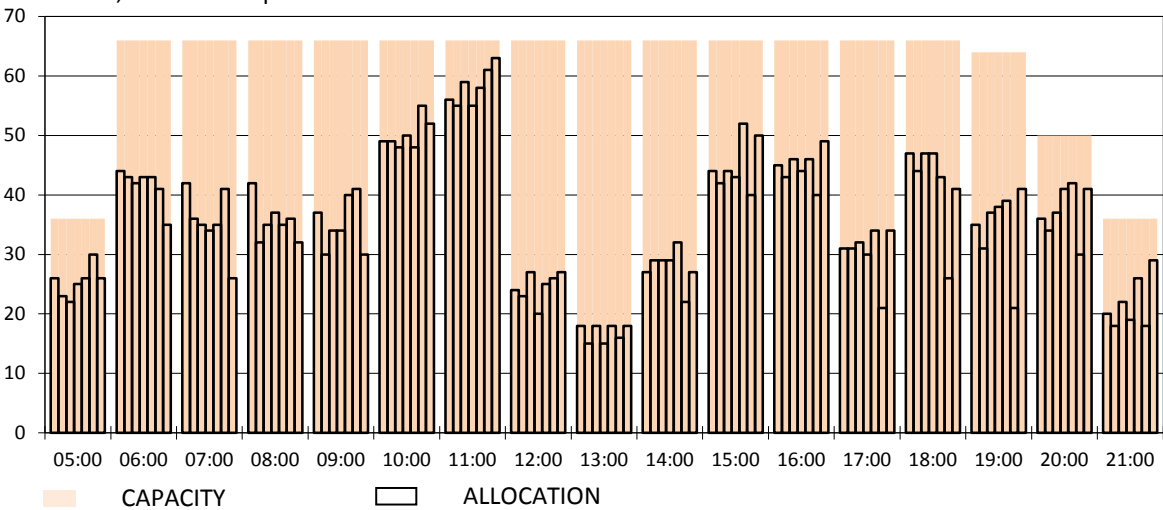
RUNWAY MOVEMENT START OF SEASON - DEPARTURES

Reference week, movements per hour - all times UTC



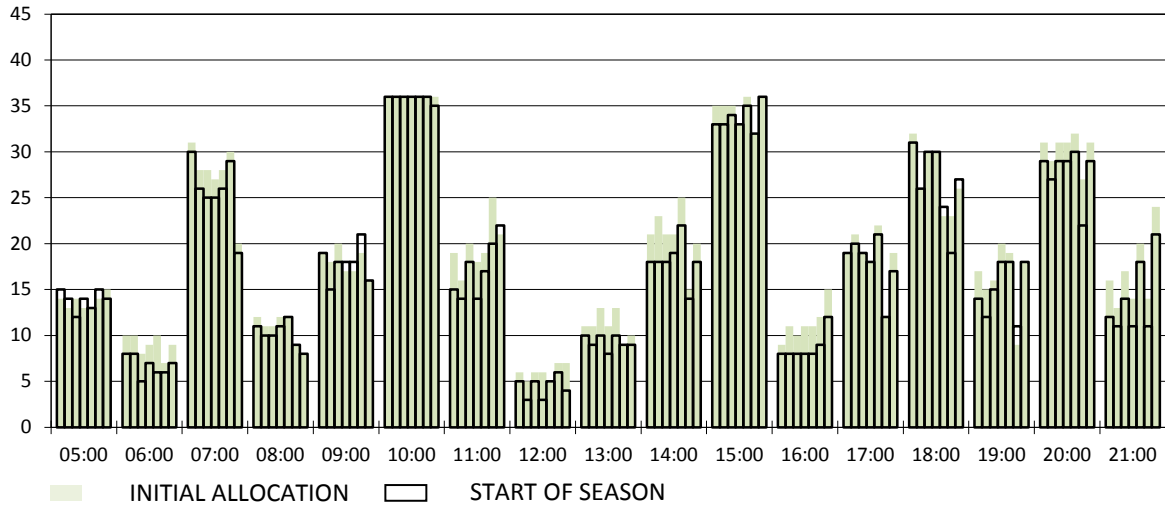
RUNWAY MOVEMENT START OF SEASON - TOTALS

Reference week, movements per hour - all times UTC



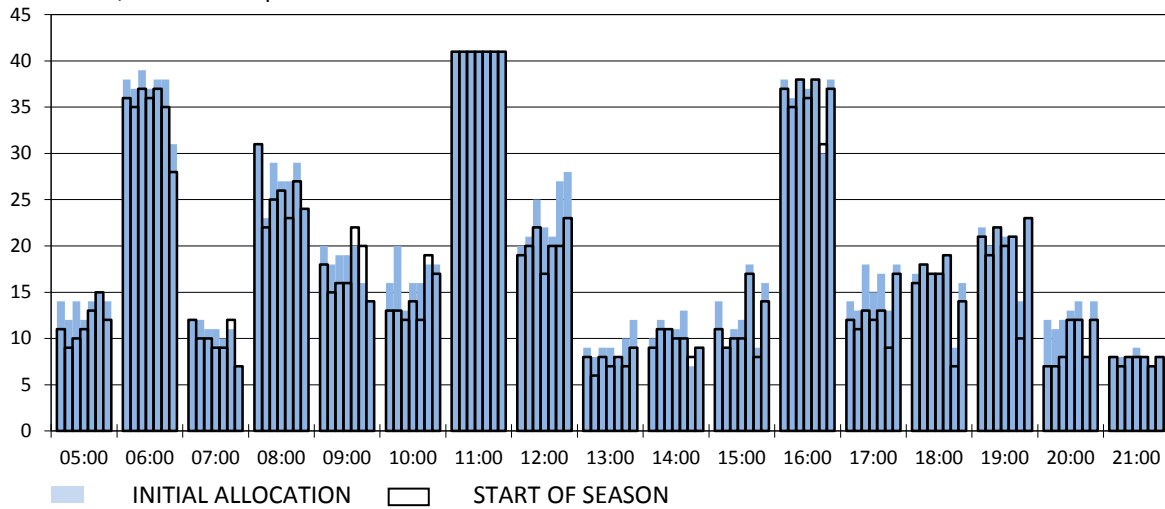
RUNWAY MOVEMENT DEVELOPMENT INITIAL ALLOCATION TO START OF SEASON - ARRIVALS

Reference week, movements per hour - all times UTC



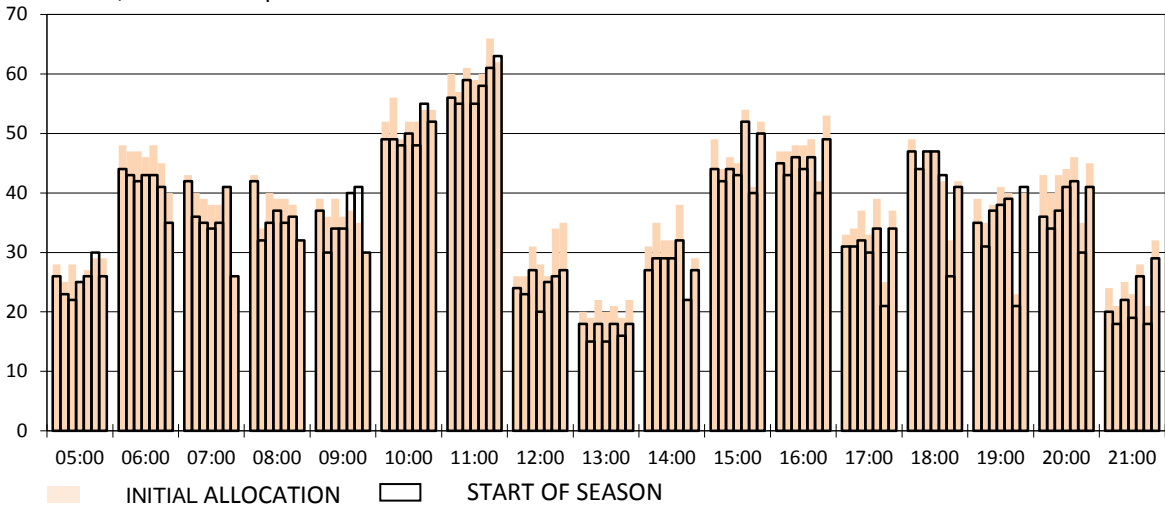
RUNWAY MOVEMENT DEVELOPMENT INITIAL ALLOCATION TO START OF SEASON - DEPARTURES

Reference week, movements per hour - all times UTC



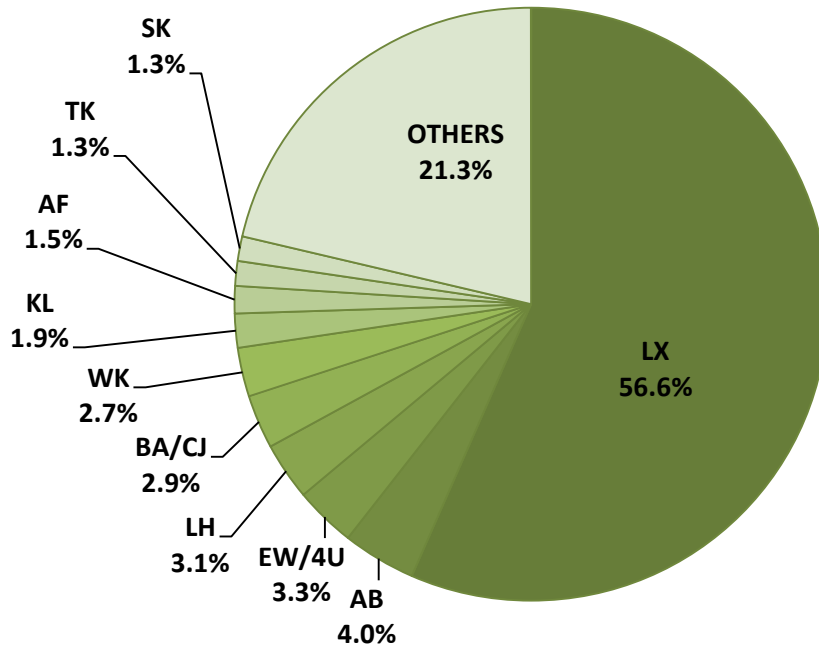
RUNWAY MOVEMENT DEVELOPMENT INITIAL ALLOCATION TO START OF SEASON - TOTALS

Reference week, movements per hour - all times UTC

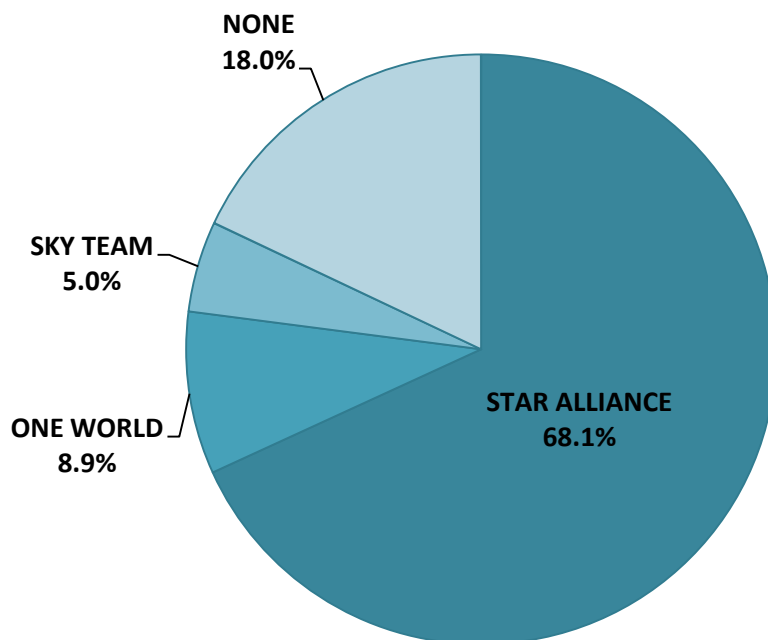


NOTE: Above histograms show the slot development from initial allocation to start of season

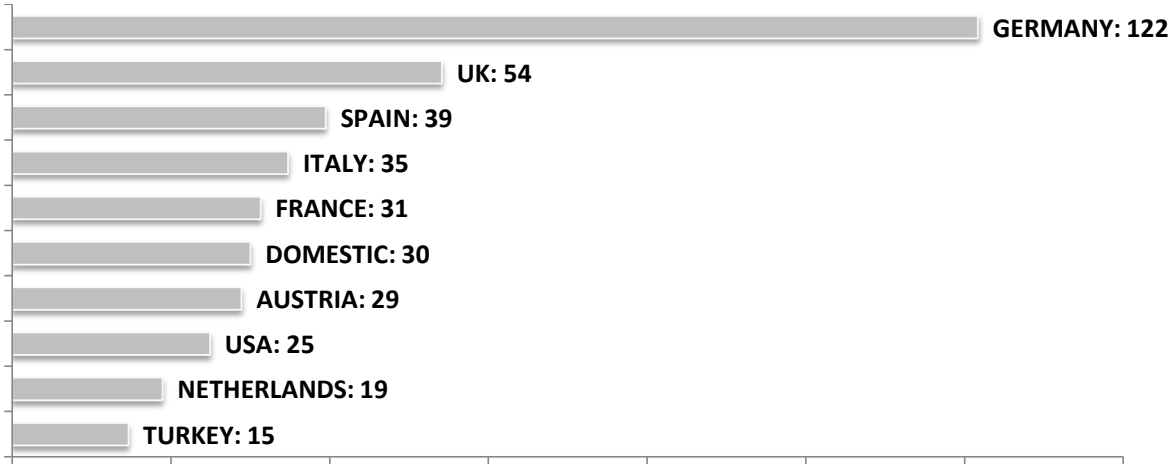
SEASONAL SLOT SHARE - 10 TOP CARRIER



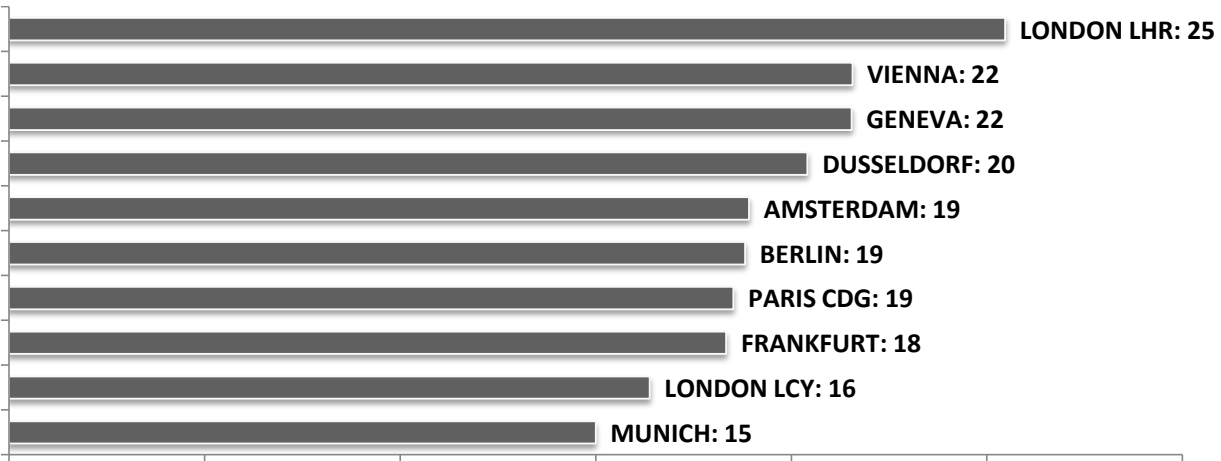
SEASONAL SLOT SHARE - PER ALLIANCES



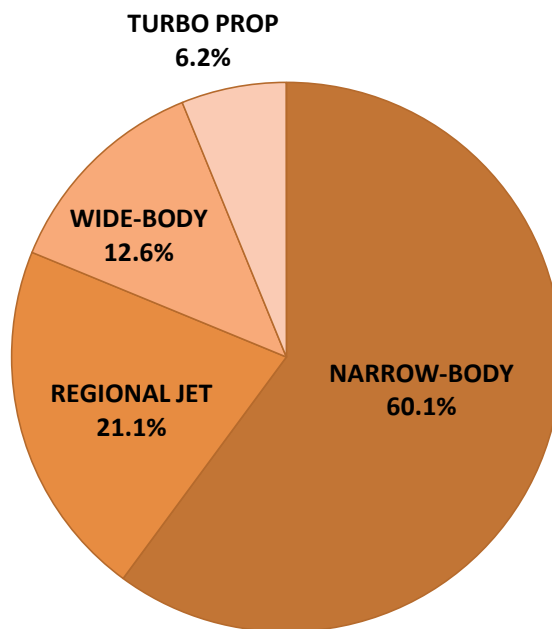
TOP 10 COUNTRIES - Number of Daily Slots



TOP 10 ROUTES - Number of Daily Slots



AIRCRAFT UTILISATION



Aircraft Sizes

- Widebody e.g. A330, A340, B747, B767, B777
- Narrowbody e.g. A32S, B737, B757, F100
- Regional Jet e.g. ARJ, CRJ, ERJ
- Turbo Prop e.g. ATR, DH4, S20