

START OF SEASON REPORT ZURICH WINTER SEASON

30 OCTOBER 2016 - 25 MARCH 2017 (W16)

2016

KEY FIGURES	W15	W16	+/-
Cleared Airport Slots	87,123	89,421	2.6%
Seats offered (1000)	13,515	14,481	7.1%
Seats per Airport Slot	155	162	4.4%
Runway Utilisation	56.8%	58.3%	1.5%
Number of Carriers	62	59	-3

Note: For comparison reasons W15 figures (22 season weeks) are transposed to reflect W16's 21 season weeks!

TABLE OF CONTENTS

	Page
Management Summary	2
Overview Main Carriers	3
Runway Histograms	4,5
Slot Shares	6
Traffic Flows, Aircraft Utilisation	7

GLOSSARY OF TERMS

Allocation	The allocation of slots within declared capacity limits.
Capacity Limits	Limiting parameters declared by the Airport Operator used in the coordination process.
Seats	The number of seats based on the aircraft configuration advised by the airline.

GUIDE TO HISTOGRAMS

The histograms show the pattern of traffic by time of day against the appropriate capacity limit. Each time period consists of seven columns representing the days-of-week, Monday through Sunday. All histograms are based on a reference week.

For Winter 2016 the reference week is 13-19 February 2017.

OVERVIEW MAIN CARRIERS

Number of average slots per week

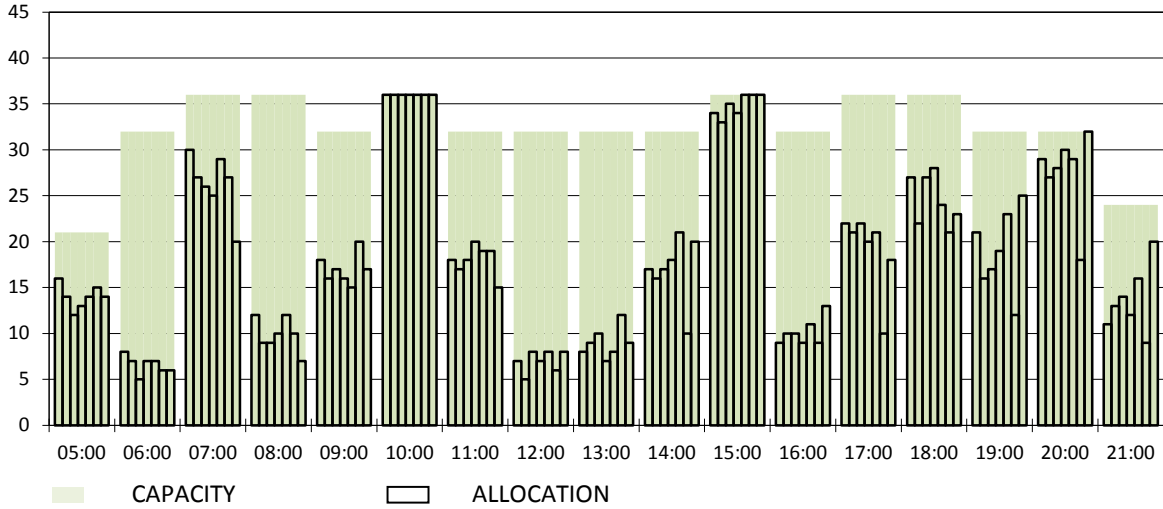
	START OF SEASON			
	W15	W16	+/-	Share
ALL CARRIERS	4149	4258	2.6%	
Swiss Carriers	2562	2534	-1.1%	59.5%
<i>where of</i>				
Swiss International Air Lines	2348	2308	-1.7%	54.2%
Edelweiss Air	110	129	17.3%	3.0%
Germania Flug AG	35	50	42.9%	1.2%
Darwin Airline	28	28	0.0%	0.7%
Belair	17	14	-17.6%	0.3%
Helvetic	24	5	-79.2%	0.1%
Foreign Carriers	1587	1724	8.6%	40.5%
<i>where of</i>				
Air Berlin/(Niki)	213	222	4.2%	5.2%
Eurowings/Germanwings	138	148	7.2%	3.5%
Lufthansa	129	132	2.3%	3.1%
British Airways/BA CityFlyer	123	111	-9.8%	2.6%
Easyjet	31	81	161.3%	1.9%
KLM	77	79	2.6%	1.9%
Vueling	26	73	180.8%	1.7%
TAP Air Portugal	50	68	36.0%	1.6%
SAS	56	62	10.7%	1.5%
Air France	62	60	-3.2%	1.4%
Maj. foreign Carriers	905	1036	14.5%	24.3%

	SLOT RETURN			
	W15	W16	+/-	Share
	4178	4364	4.5%	
	2592	2616	0.9%	59.9%
	2368	2374	0.3%	54.4%
	118	141	19.5%	3.2%
	35	53	51.4%	1.2%
	28	28	0.0%	0.6%
	17	14	-17.6%	0.3%
	26	6	-76.9%	0.1%
	1586	1748	10.2%	40.1%
	209	222	6.2%	5.1%
	138	148	7.2%	3.4%
	129	132	2.3%	3.0%
	122	113	-7.4%	2.6%
	32	80	150.0%	1.8%
	77	79	2.6%	1.8%
	22	75	240.9%	1.7%
	50	68	36.0%	1.6%
	55	62	12.7%	1.4%
	62	61	-1.6%	1.4%
	896	1040	16.1%	23.8%

Note: Slots from Niki (HG) have been transferred to Air Berlin (AB)

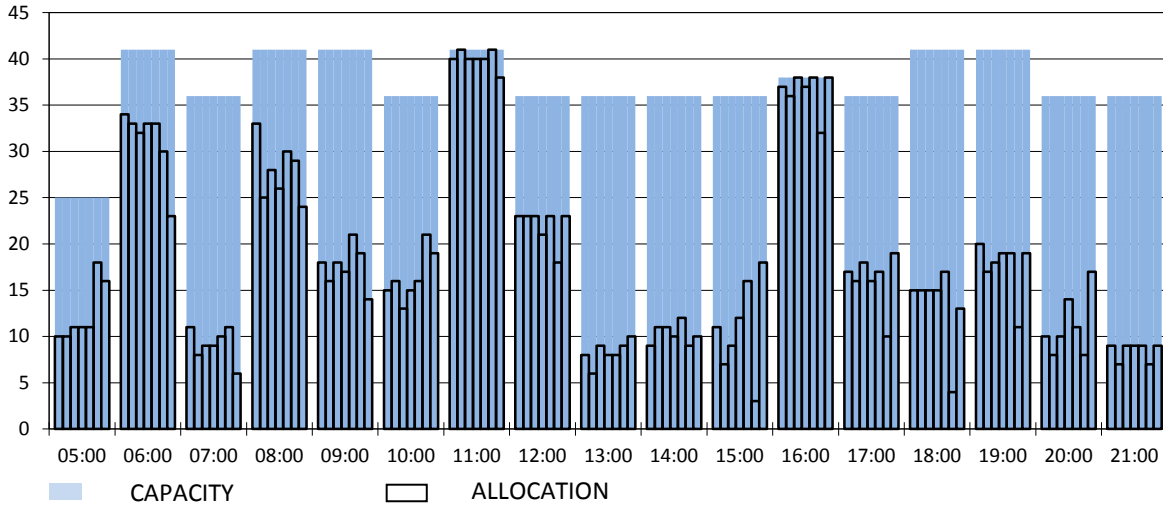
RUNWAY MOVEMENT START OF SEASON - ARRIVALS

Reference week, movements per hour - all times UTC



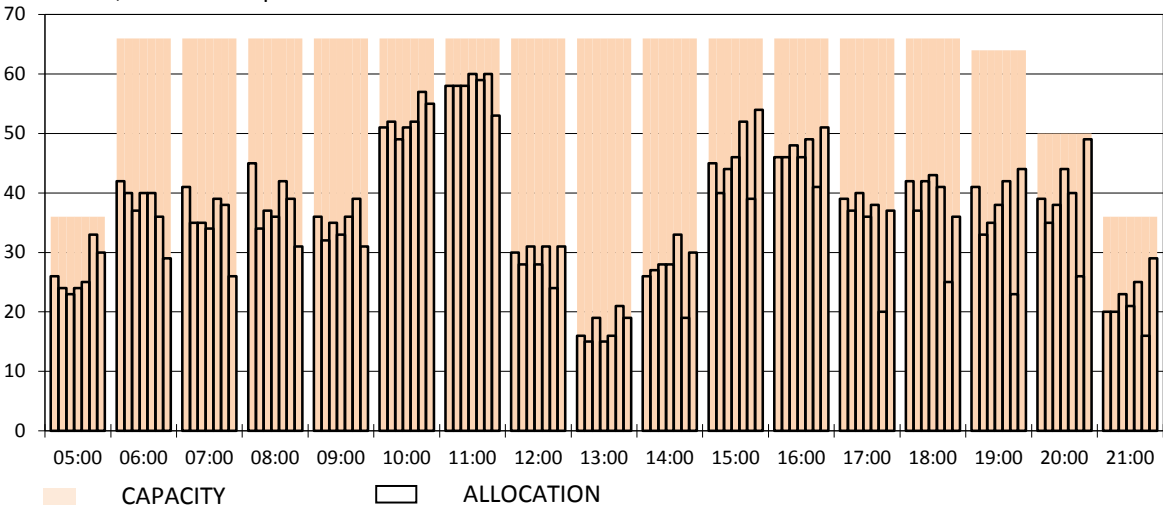
RUNWAY MOVEMENT START OF SEASON - DEPARTURES

Reference week, movements per hour - all times UTC



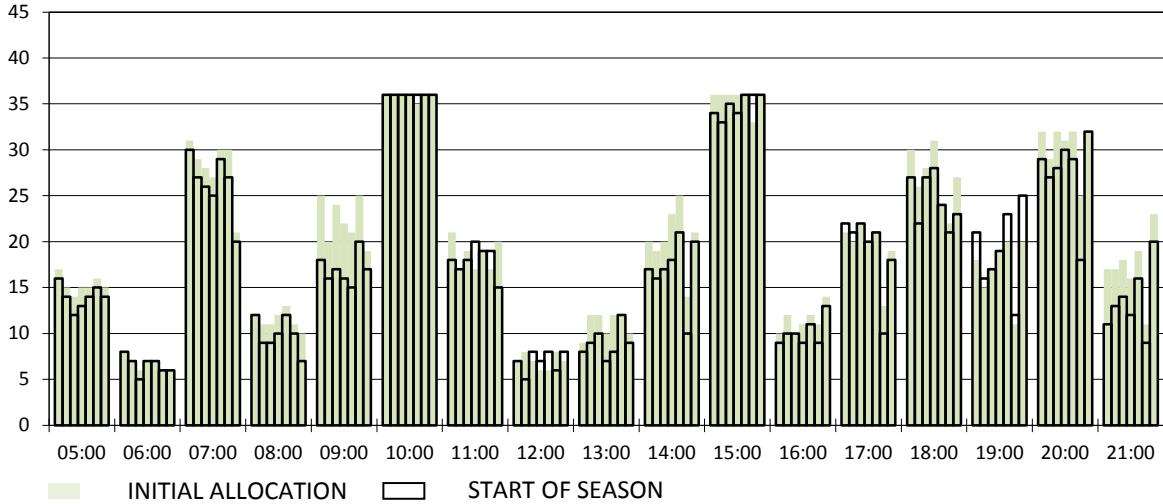
RUNWAY MOVEMENT START OF SEASON - TOTALS

Reference week, movements per hour - all times UTC



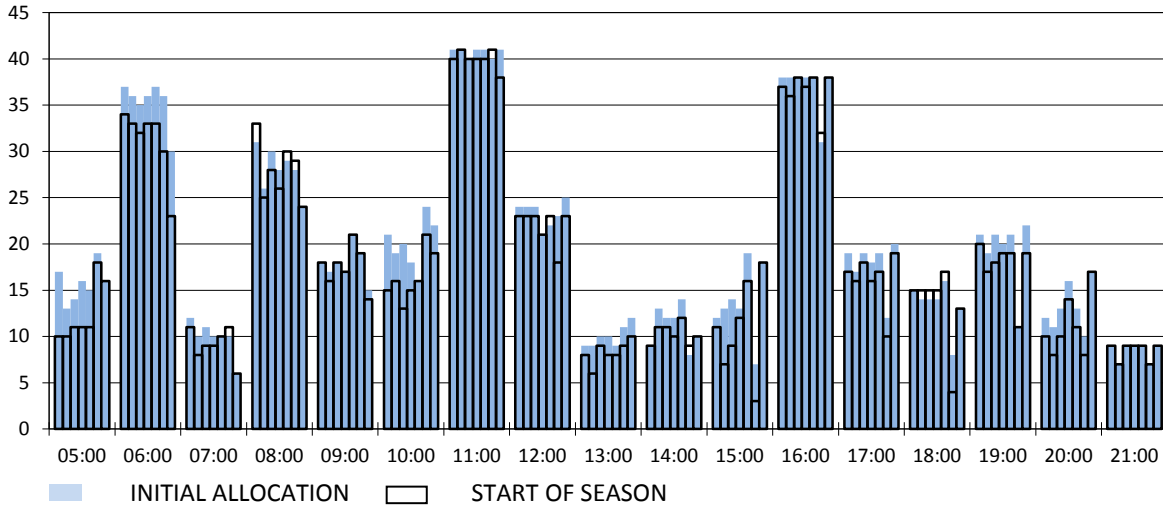
RUNWAY MOVEMENT DEVELOPMENT INITIAL ALLOCATION TO START OF SEASON - ARRIVALS

Reference week, movements per hour - all times UTC



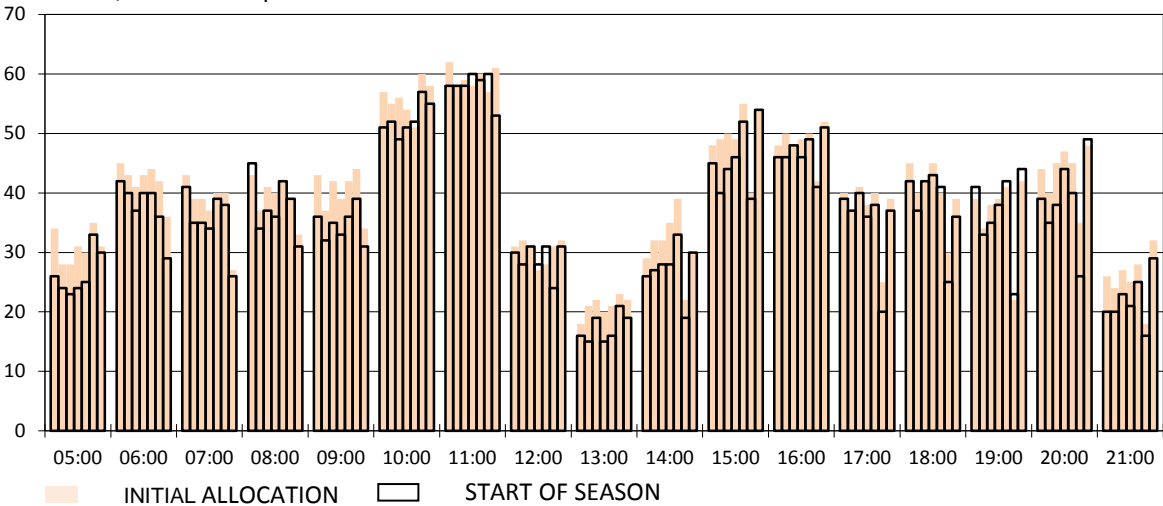
RUNWAY MOVEMENT DEVELOPMENT INITIAL ALLOCATION TO START OF SEASON - DEPARTURES

Reference week, movements per hour - all times UTC



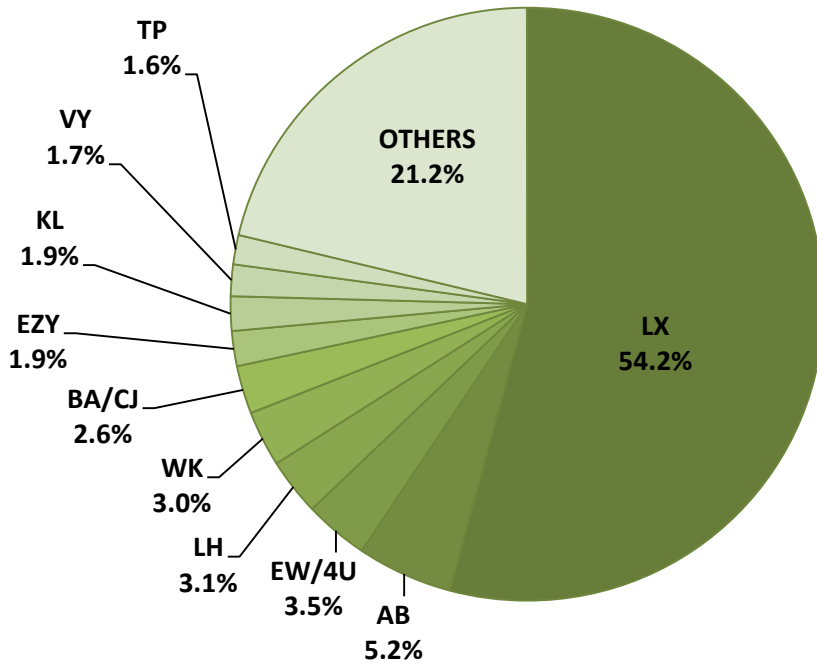
RUNWAY MOVEMENT DEVELOPMENT INITIAL ALLOCATION TO START OF SEASON - TOTALS

Reference week, movements per hour - all times UTC

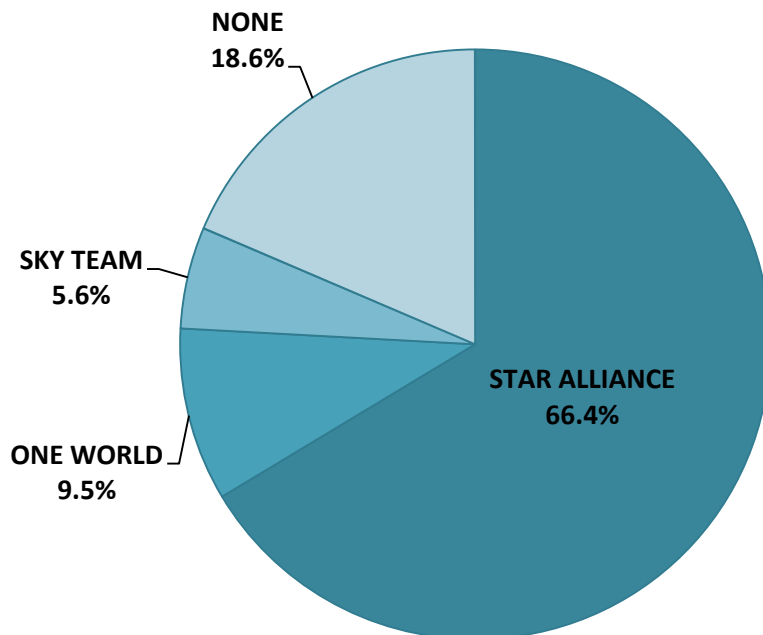


NOTE: Above histograms show the slot development from initial allocation to start of season

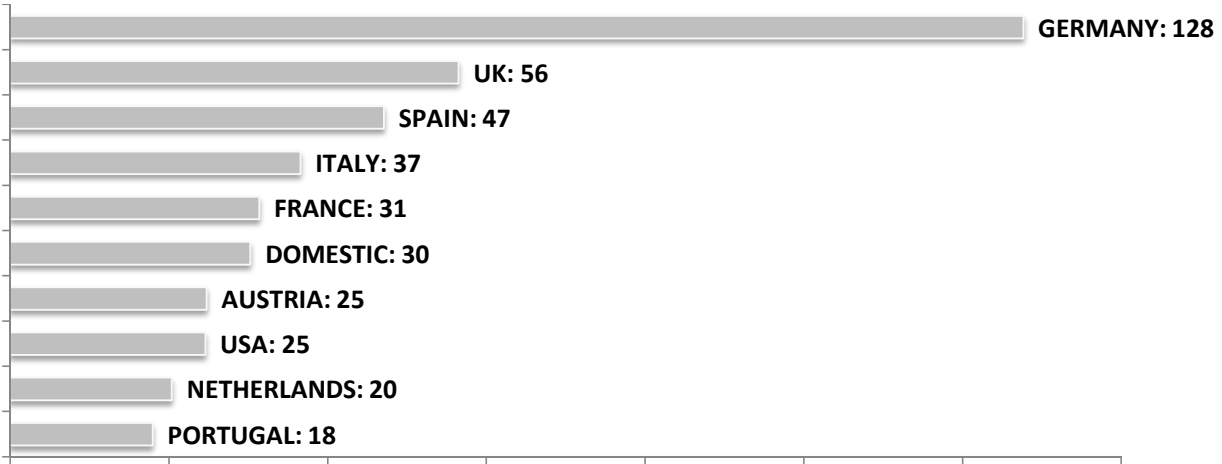
SEASONAL SLOT SHARE - 10 TOP CARRIER



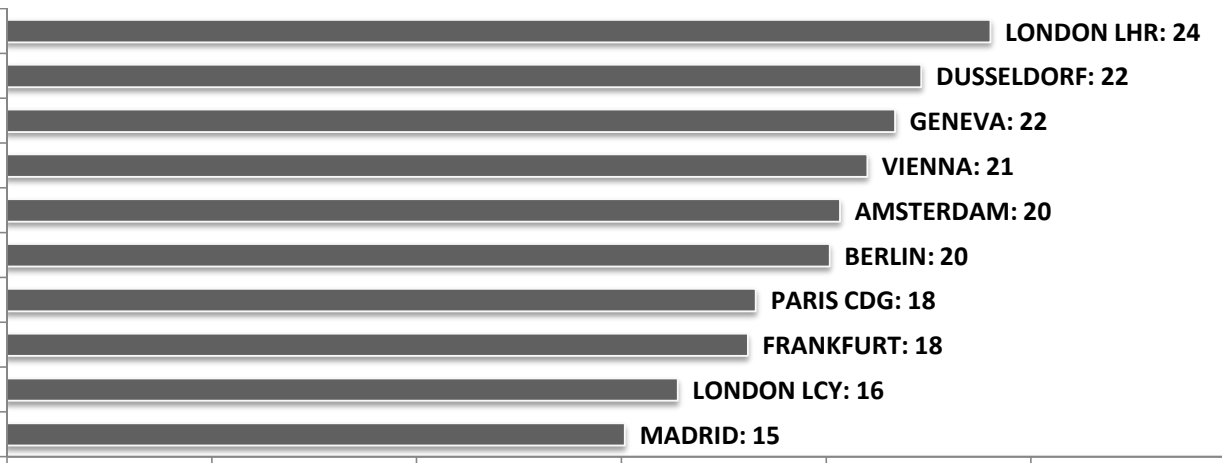
SEASONAL SLOT SHARE - PER ALLIANCES



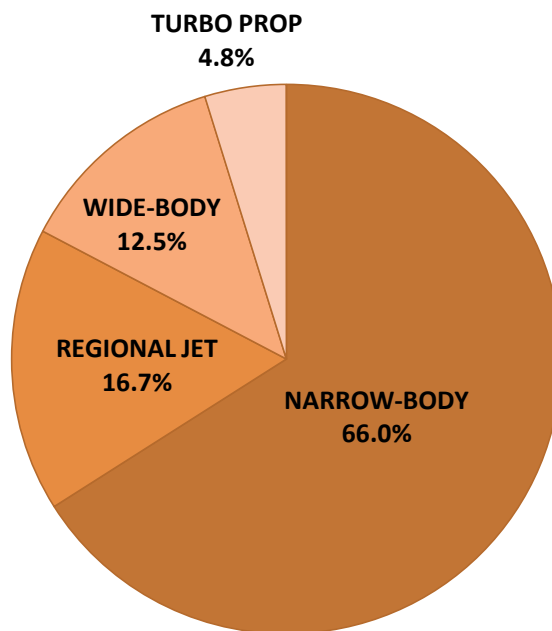
TOP 10 COUNTRIES - Number of Daily Slots



TOP 10 ROUTES - Number of Daily Slots



AIRCRAFT UTILISATION



Aircraft Sizes
 Widebody e.g. A330, A340, B747, B767, B777
 Narrowbody e.g. A32S, B737, B757, CS1
 Regional Jet e.g. ARJ, CRJ, ERJ
 Turbo Prop e.g. ATR, DH4, S20