

START OF SEASON REPORT ZURICH WINTER SEASON

29 OCTOBER 2017 - 24 MARCH 2018 (W17)

2017

KEY FIGURES	W16	W17	+/-
Cleared Airport Slots	89,421	91,629	2.5%
Seats offered (1000)	14,481	15,646	8.0%
Seats per Airport Slot	162	171	5.4%
Runway Utilisation	58.3%	59.6%	1.3%
Number of Carriers	59	61	+2

TABLE OF CONTENTS

	Page
Management Summary	2
Overview Main Carriers	3
Runway Histograms	4,5
Slot Shares	6
Traffic Flows, Aircraft Utilisation	7

GLOSSARY OF TERMS

Allocation	The allocation of slots within declared capacity limits.
Capacity Limits	Limiting parameters declared by the Airport Operator used in the coordination process.
Seats	The number of seats based on the aircraft configuration advised by the airline.

GUIDE TO HISTOGRAMS

The histograms show the pattern of traffic by time of day against the appropriate capacity limit. Each time period consists of seven columns representing the days-of-week, Monday through Sunday. All histograms are based on a reference week.

For Winter 2017 the reference week is 12-18 February 2018.

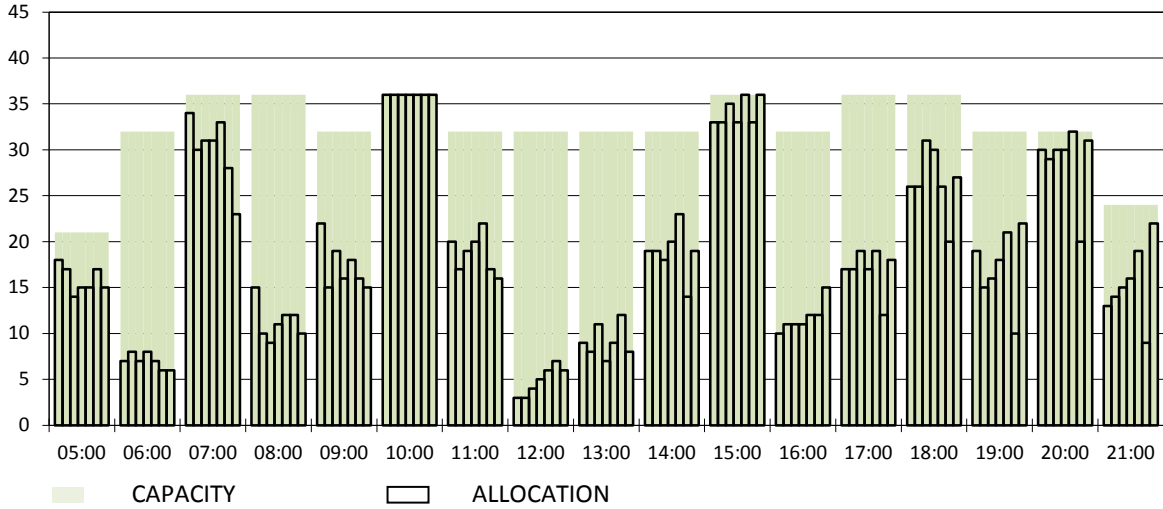
OVERVIEW MAIN CARRIERS

Number of average slots per week

	START OF SEASON				SLOT RETURN			
	W16	W17	+/-	Share	W16	W17	+/-	Share
ALL CARRIERS	4258	4363	2.5%		4364	4492	2.9%	
Swiss Carriers	2520	2548	1.1%	58.4%	2602	2655	2.0%	59.1%
<i>where of</i>								
Swiss International Air Lines	2308	2336	1.2%	53.5%	2374	2380	0.3%	53.0%
Edelweiss Air	129	163	26.4%	3.7%	141	162	14.9%	3.6%
Germania Flug AG	50	44	-12.0%	1.0%	53	52	-1.9%	1.2%
Helvetic	5	5	0.0%	0.1%	6	32	433.3%	0.7%
Darwin Airline	28	0	-100.0%	0.0%	28	29	3.6%	0.6%
Foreign Carriers	1738	1815	4.4%	41.6%	1762	1837	4.3%	40.9%
<i>where of</i>								
Eurowings	148	157	6.1%	3.6%	148	142	-4.1%	3.2%
Lufthansa	132	134	1.5%	3.1%	132	134	1.5%	3.0%
British Airways/BA CityFlyer	111	124	11.7%	2.8%	113	125	10.6%	2.8%
Easyjet	81	108	33.3%	2.5%	80	113	41.3%	2.5%
Air Berlin	222	98	-55.9%	2.2%	222	131	-41.0%	2.9%
KLM	79	81	2.5%	1.9%	79	81	2.5%	1.8%
Austrian Airlines	49	72	46.9%	1.7%	48	72	50.0%	1.6%
Vueling	73	66	-9.6%	1.5%	75	67	-10.7%	1.5%
TAP Air Portugal	68	66	-2.9%	1.5%	68	66	-2.9%	1.5%
SAS	62	62	0.0%	1.4%	62	61	-1.6%	1.4%
Maj. foreign Carriers	1025	968	-5.6%	22.2%	1027	992	-3.4%	22.1%

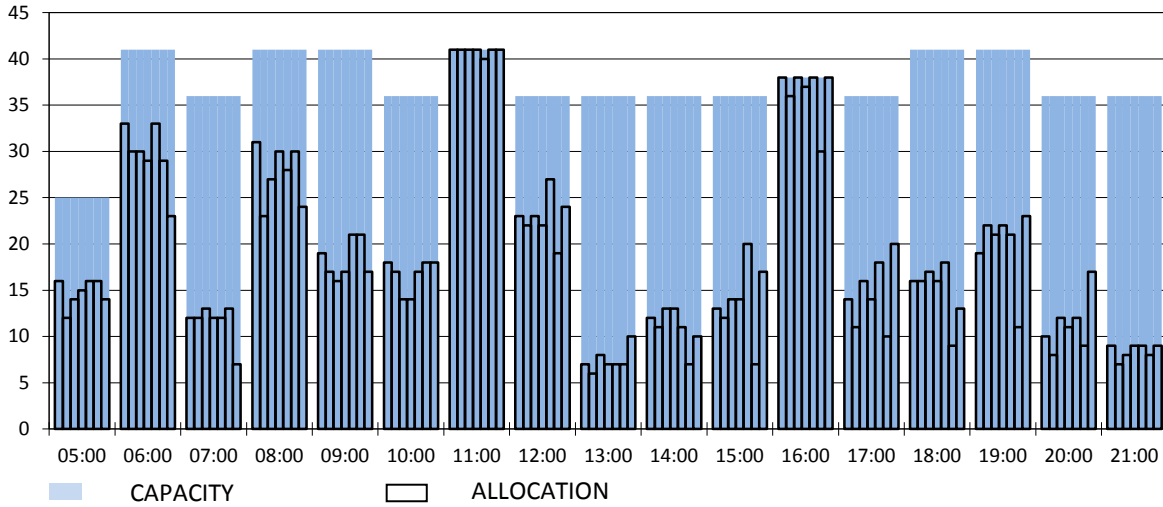
RUNWAY MOVEMENT START OF SEASON - ARRIVALS

Reference week, movements per hour - all times UTC



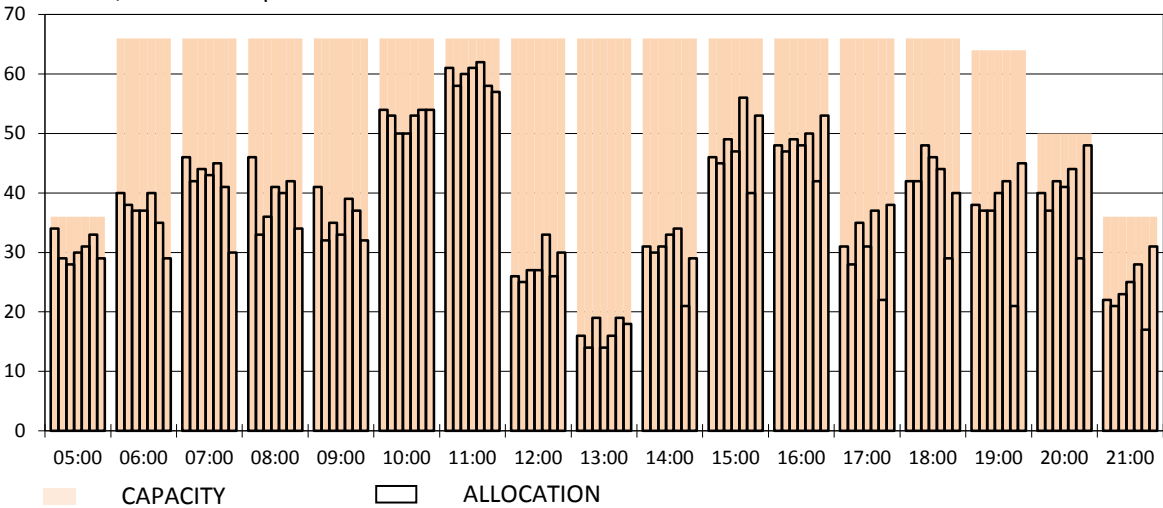
RUNWAY MOVEMENT START OF SEASON - DEPARTURES

Reference week, movements per hour - all times UTC



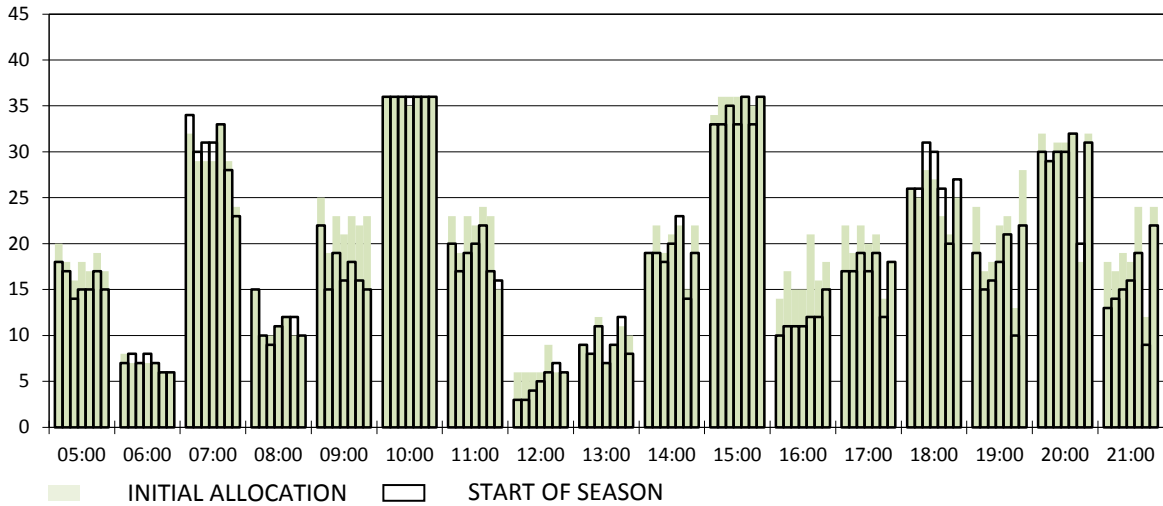
RUNWAY MOVEMENT START OF SEASON - TOTALS

Reference week, movements per hour - all times UTC



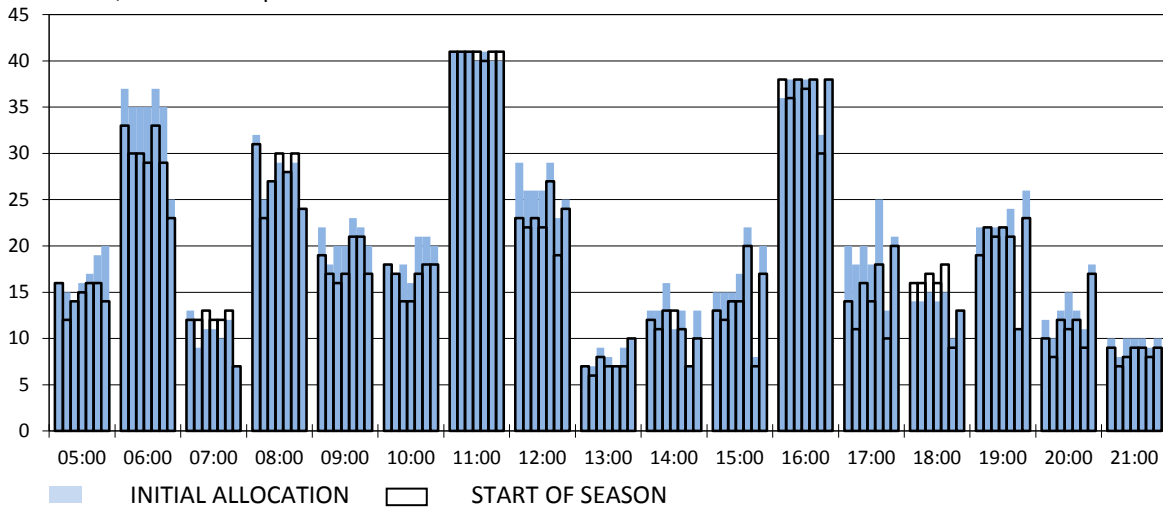
RUNWAY MOVEMENT DEVELOPMENT INITIAL ALLOCATION TO START OF SEASON - ARRIVALS

Reference week, movements per hour - all times UTC



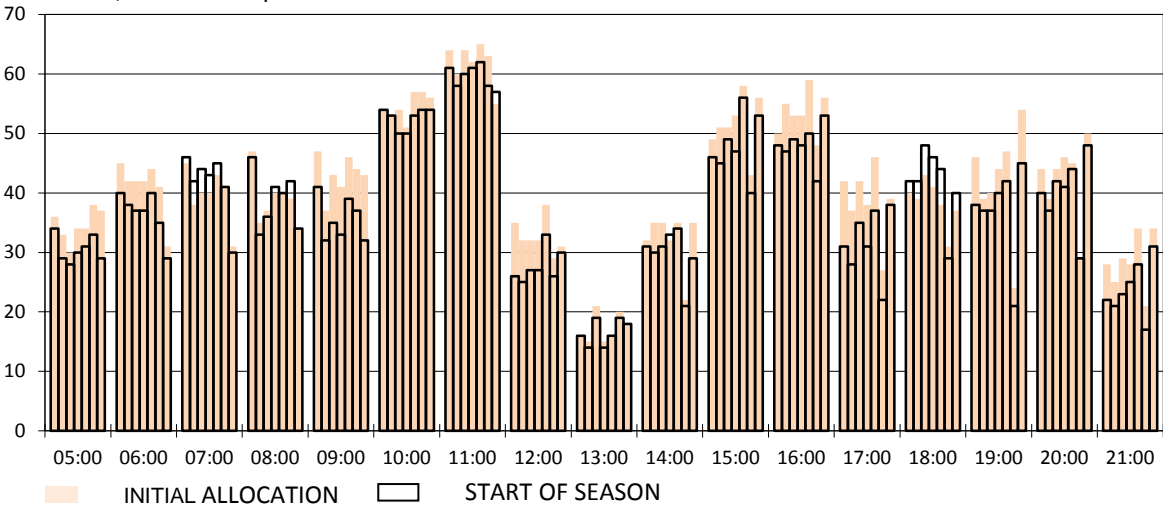
RUNWAY MOVEMENT DEVELOPMENT INITIAL ALLOCATION TO START OF SEASON - DEPARTURES

Reference week, movements per hour - all times UTC



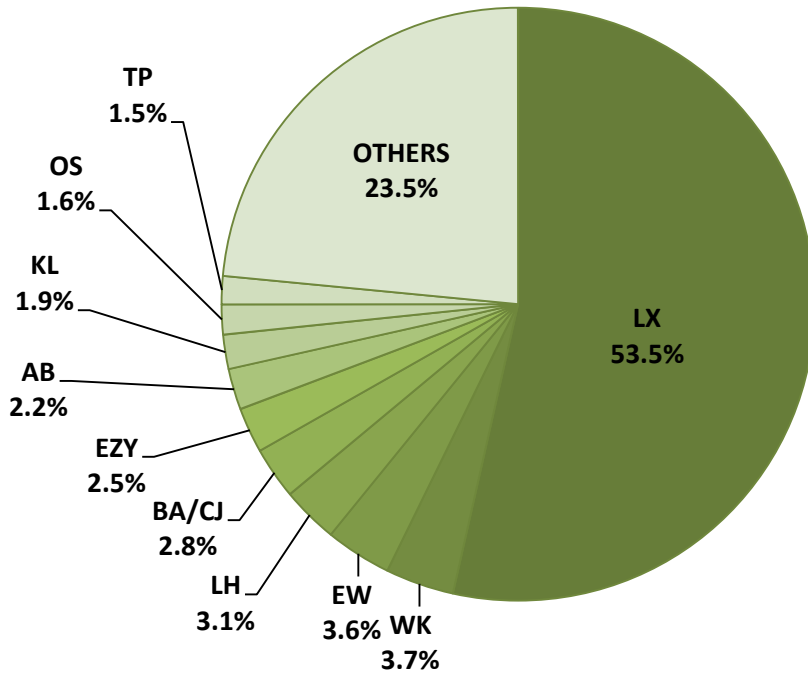
RUNWAY MOVEMENT DEVELOPMENT INITIAL ALLOCATION TO START OF SEASON - TOTALS

Reference week, movements per hour - all times UTC

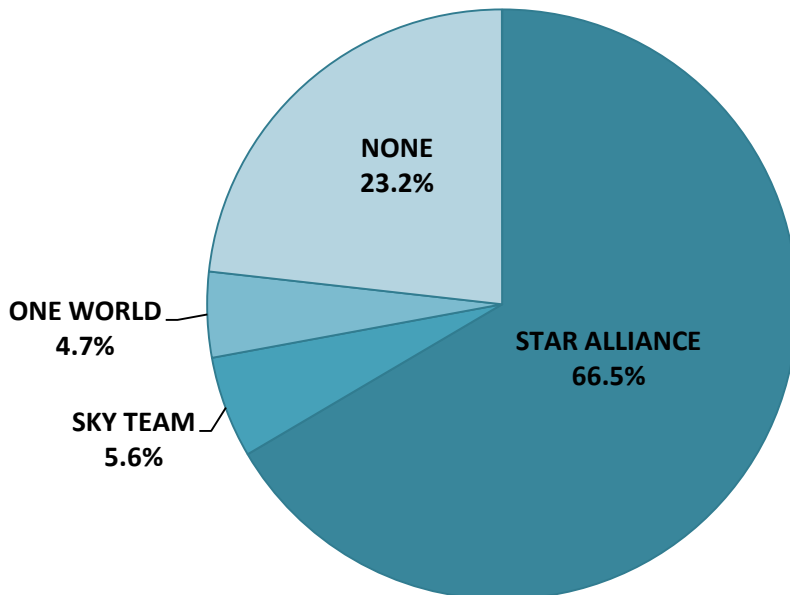


NOTE: Above histograms show the slot development from initial allocation to start of season

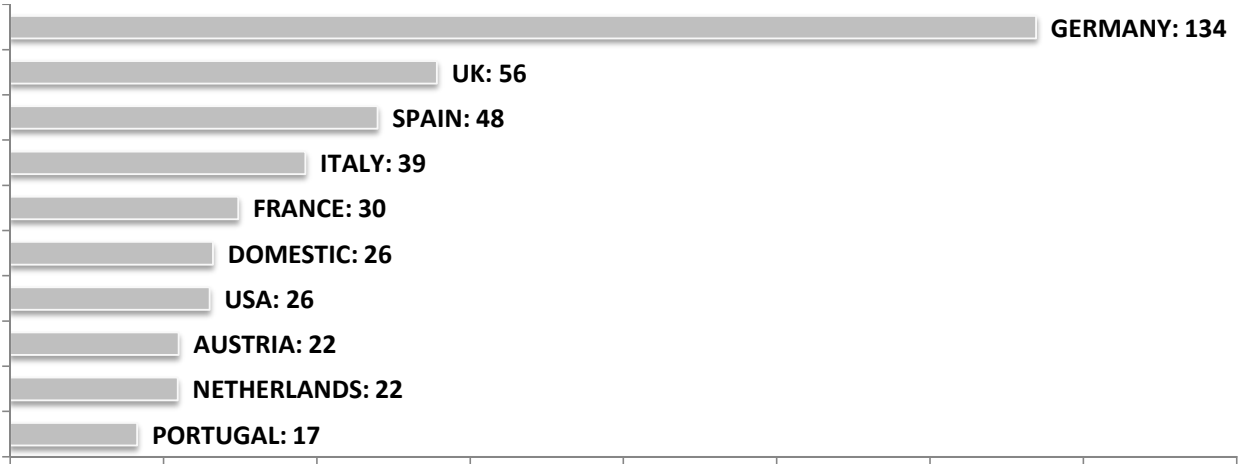
SEASONAL SLOT SHARE - 10 TOP CARRIER



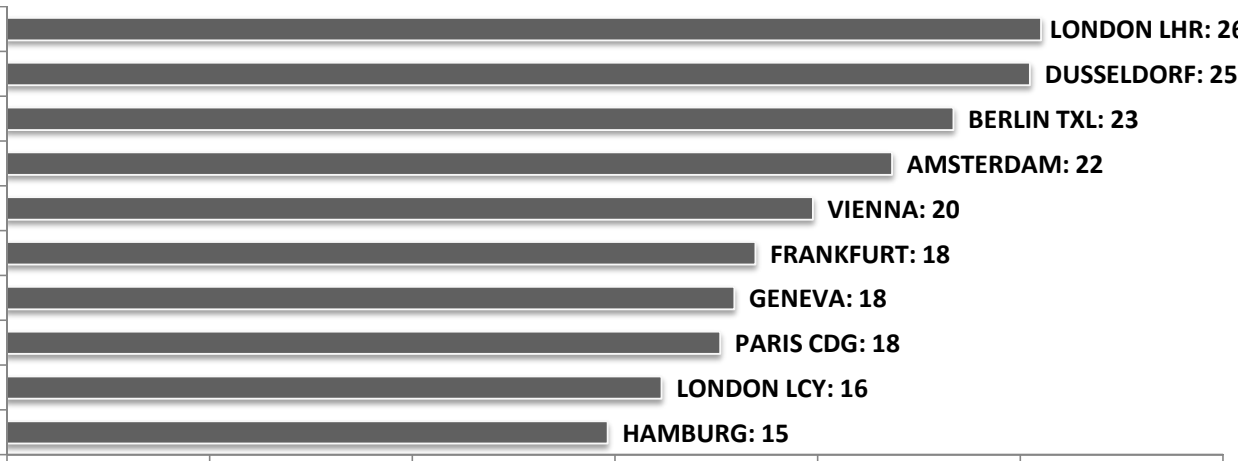
SEASONAL SLOT SHARE - PER ALLIANCES



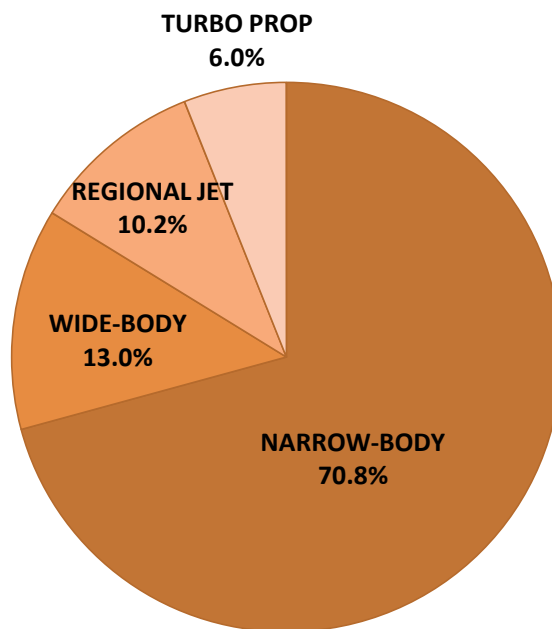
TOP 10 COUNTRIES - Number of Daily Slots



TOP 10 ROUTES - Number of Daily Slots



AIRCRAFT UTILISATION



Aircraft Sizes
 Widebody e.g. A330, B767, B777
 Narrowbody e.g. A32S, B737, BCS
 Regional Jet e.g. ARJ, CRJ, ERJ
 Turbo Prop e.g. ATR, DH4, S20