

START OF SEASON REPORT ZURICH WINTER SEASON

28 OCTOBER 2018 - 30 MARCH 2019 (W18)

2018

KEY FIGURES	W17	W18	+/-
Cleared Airport Slots	95,992	97,838	1.9%
Seats offered (1000)	16,391	16,811	2.6%
Seats per Airport Slot	171	172	0.6%
Runway Utilisation	59.6%	60.7%	1.1%
Number of Carriers	61	56	-5

Note: For comparison reasons W17 figures (21 season weeks) are transposed to reflect W18's 22 season weeks!

TABLE OF CONTENTS

	Page
Management Summary	2
Overview Main Carriers	3
Runway Histograms	4,5
Slot Shares	6
Traffic Flows, Aircraft Utilisation	7

GLOSSARY OF TERMS

Allocation	The allocation of slots within declared capacity limits.
Capacity Limits	Limiting parameters declared by the Airport Operator used in the coordination process.
Seats	The number of seats based on the aircraft configuration advised by the airline.

GUIDE TO HISTOGRAMS

The histograms show the pattern of traffic by time of day against the appropriate capacity limit. Each time period consists of seven columns representing the days-of-week, Monday through Sunday. All histograms are based on a reference week.

For Winter 2018 the reference week is 11-17 February 2019.

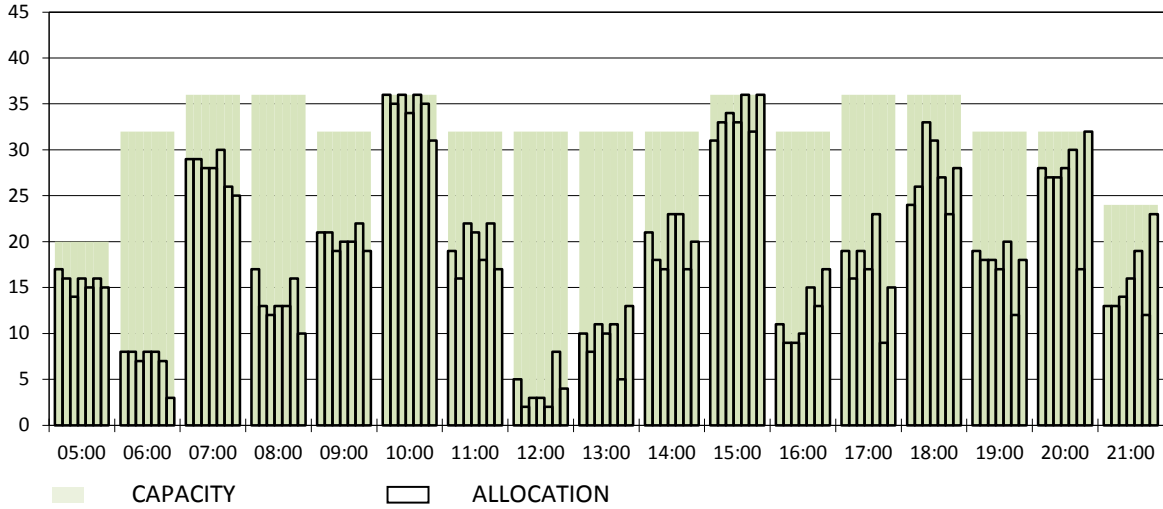
OVERVIEW MAIN CARRIERS

Number of average slots per week

	START OF SEASON				SLOT RETURN			
	W17	W18	+/-	Share	W17	W18	+/-	Share
ALL CARRIERS	4363	4447	1.9%		4492	4564	1.6%	
Swiss Carriers	2548	2740	7.5%	61.6%	2626	2797	6.5%	61.3%
<i>where of</i>								
Swiss International Air Lines	2336	2439	4.4%	54.8%	2380	2501	5.1%	54.8%
Edelweiss Air	163	234	43.6%	5.3%	162	234	44.4%	5.1%
Germania Flug AG	44	61	38.6%	1.4%	52	59	13.5%	1.3%
Helvetic	5	6	20.0%	0.1%	32	3	-90.6%	0.1%
Foreign Carriers	1815	1707	-6.0%	38.4%	1866	1767	-5.3%	38.7%
<i>where of</i>								
Eurowings	157	185	17.8%	4.2%	142	203	43.0%	4.4%
Easyjet	108	136	25.9%	3.1%	113	137	21.2%	3.0%
Lufthansa	134	135	0.7%	3.0%	134	135	0.7%	3.0%
British Airways/BA CityFlyer	124	132	6.5%	3.0%	125	132	5.6%	2.9%
KLM	81	82	1.2%	1.8%	81	82	1.2%	1.8%
Austrian Airlines	72	75	4.2%	1.7%	72	75	4.2%	1.6%
TAP Air Portugal	66	67	1.5%	1.5%	66	67	1.5%	1.5%
SAS Scandinavian Airlines	62	63	1.6%	1.4%	61	63	3.3%	1.4%
Air France	61	60	-1.6%	1.3%	61	61	0.0%	1.3%
Adria Airways	40	59	47.5%	1.3%	39	62	59.0%	1.4%
Maj. foreign Carriers	905	994	9.8%	22.4%	894	1017	13.8%	22.3%

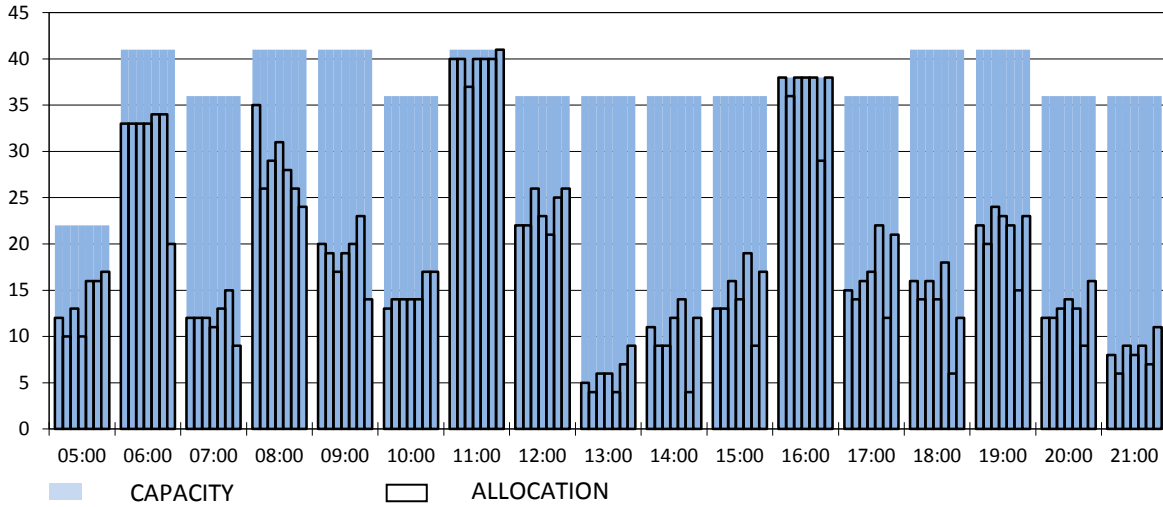
RUNWAY MOVEMENT START OF SEASON - ARRIVALS

Reference week, movements per hour - all times UTC



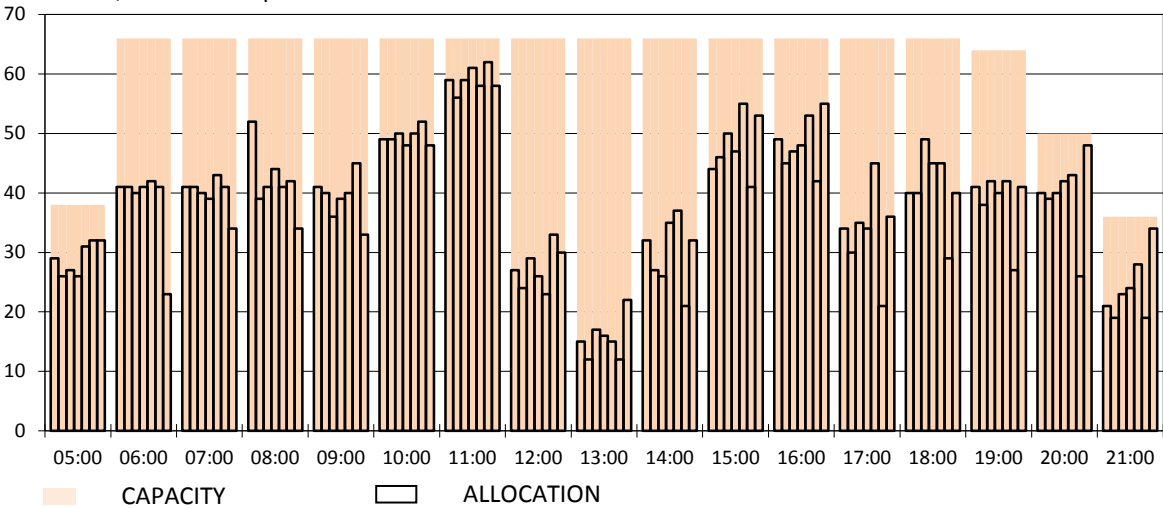
RUNWAY MOVEMENT START OF SEASON - DEPARTURES

Reference week, movements per hour - all times UTC



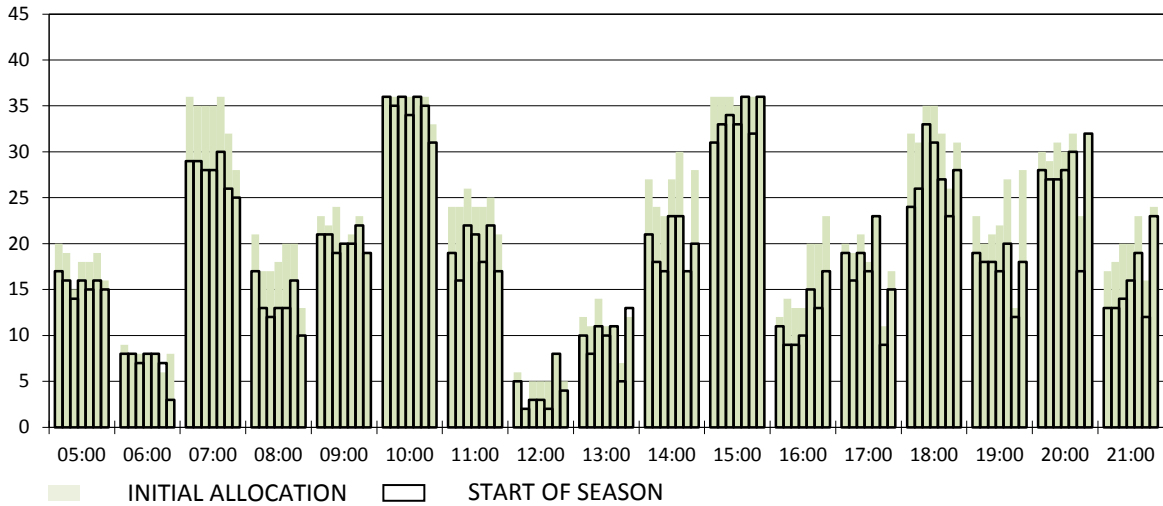
RUNWAY MOVEMENT START OF SEASON - TOTALS

Reference week, movements per hour - all times UTC



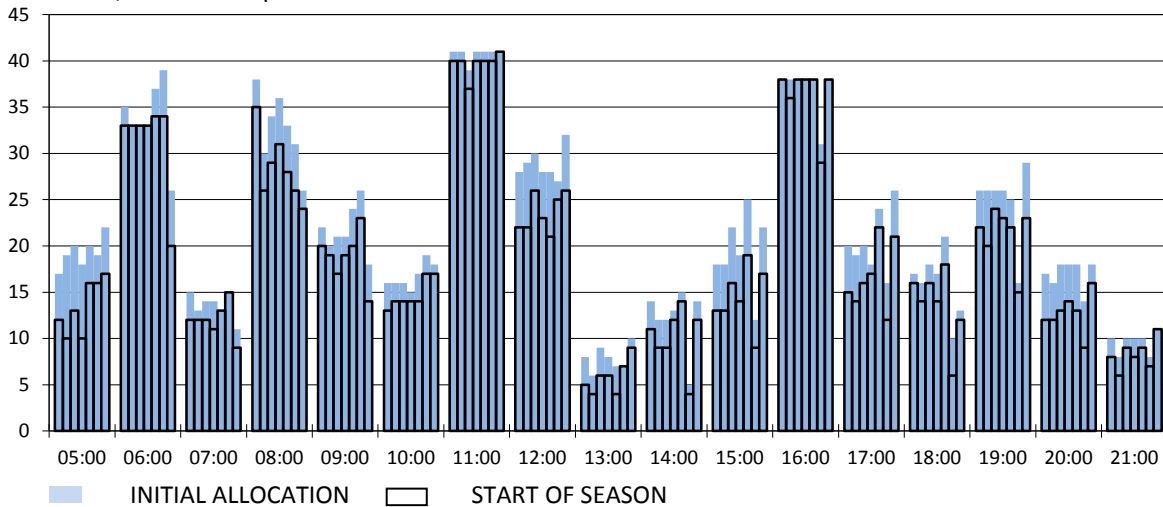
RUNWAY MOVEMENT DEVELOPMENT INITIAL ALLOCATION TO START OF SEASON - ARRIVALS

Reference week, movements per hour - all times UTC



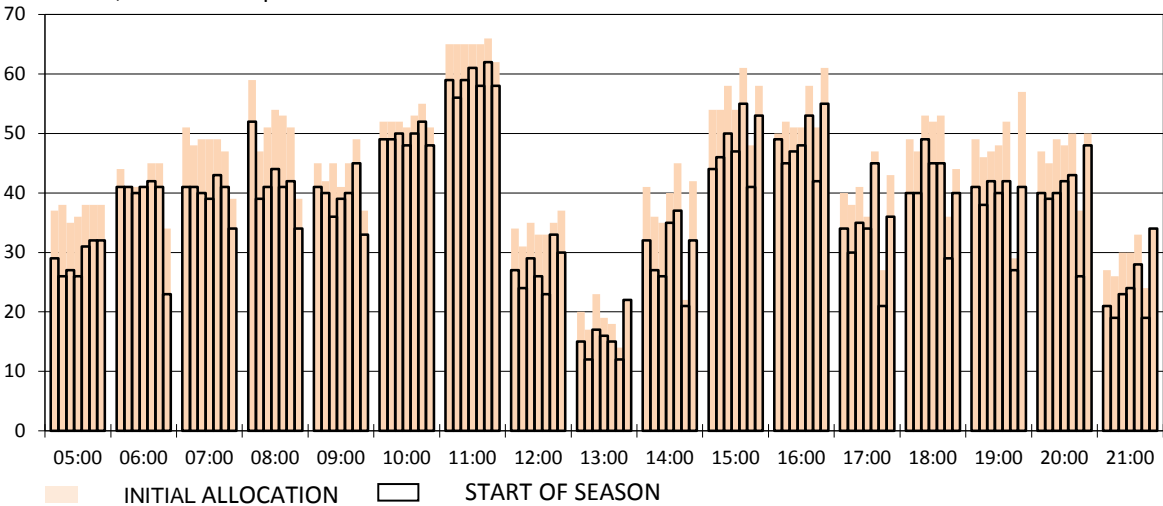
RUNWAY MOVEMENT DEVELOPMENT INITIAL ALLOCATION TO START OF SEASON - DEPARTURES

Reference week, movements per hour - all times UTC



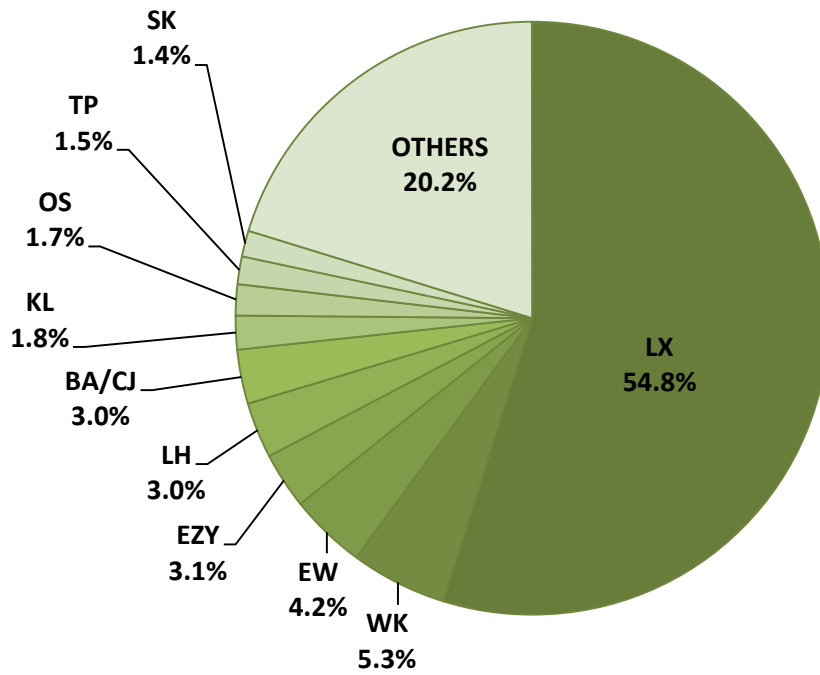
RUNWAY MOVEMENT DEVELOPMENT INITIAL ALLOCATION TO START OF SEASON - TOTALS

Reference week, movements per hour - all times UTC

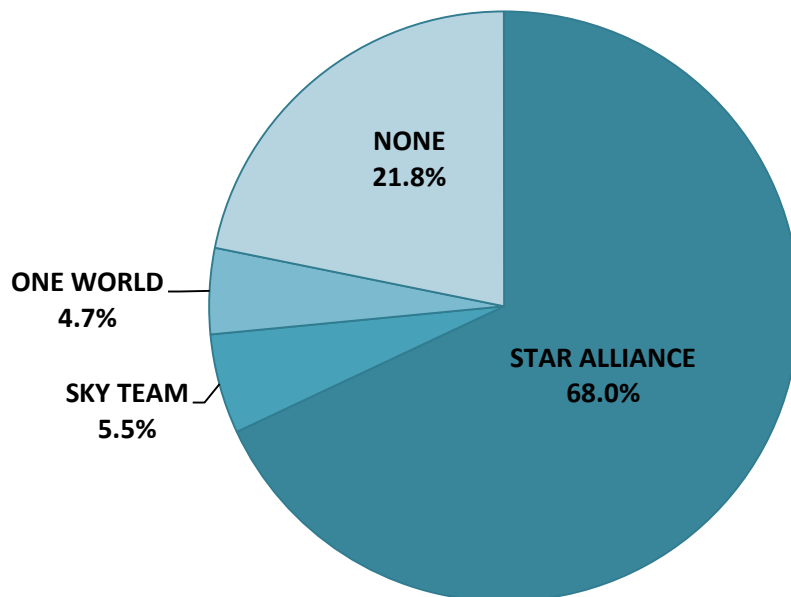


NOTE: Above histograms show the slot development from initial allocation to start of season

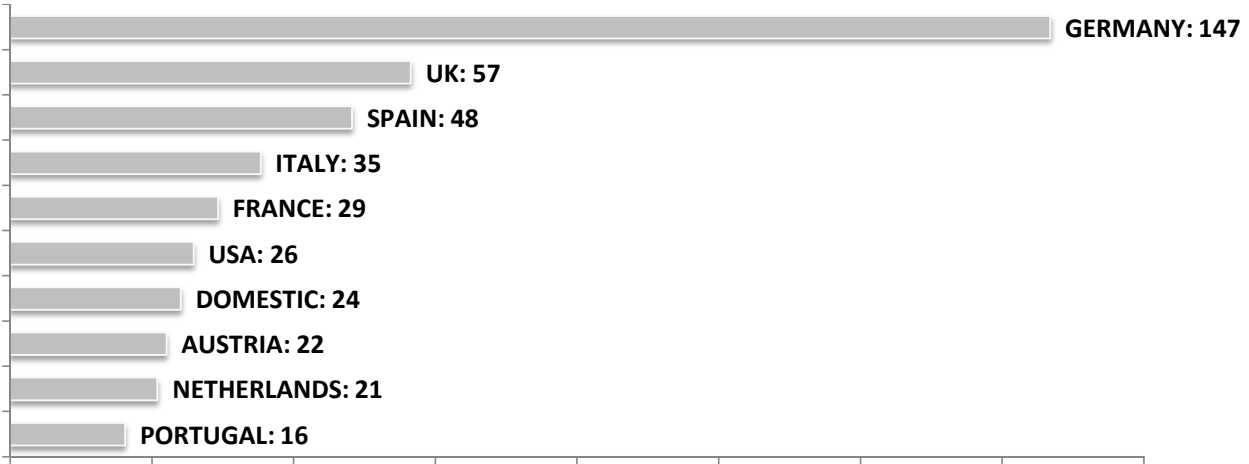
SEASONAL SLOT SHARE - 10 TOP CARRIER



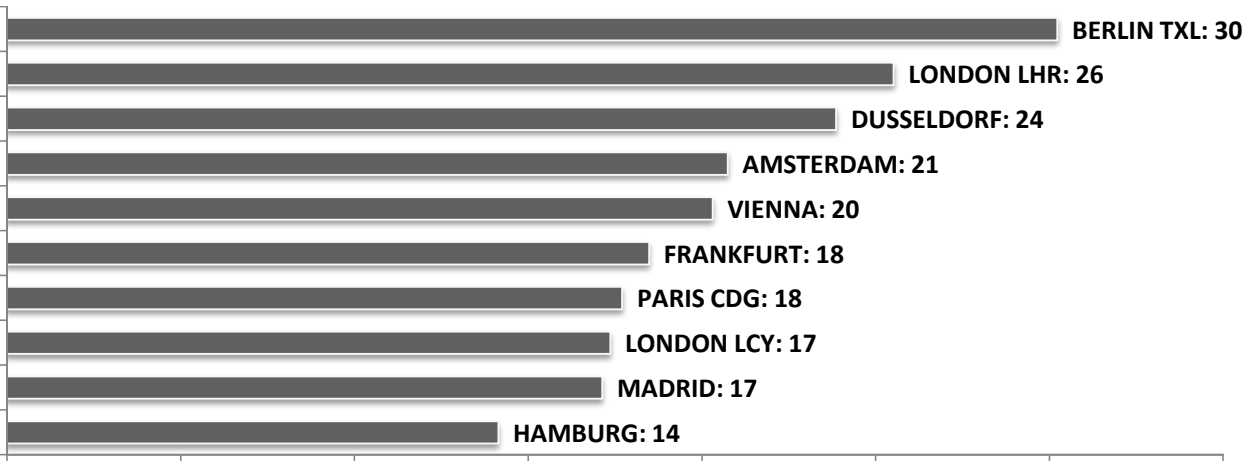
SEASONAL SLOT SHARE - PER ALLIANCES



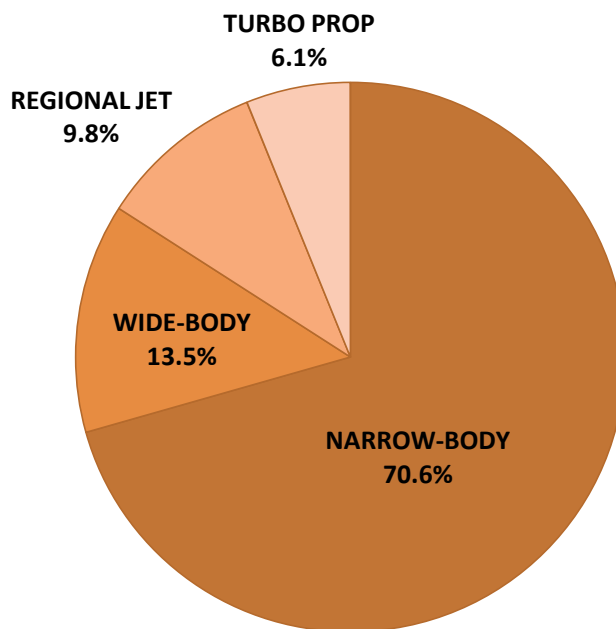
TOP 10 COUNTRIES - Number of Daily Slots



TOP 10 ROUTES - Number of Daily Slots



AIRCRAFT UTILISATION



Aircraft Sizes
 Widebody e.g. A330, B767, B777
 Narrowbody e.g. A32S, B737, BCS
 Regional Jet e.g. ARJ, CRJ, ERJ
 Turbo Prop e.g. ATR, DH4, S20