

## START OF SEASON REPORT ZURICH SUMMER SEASON

31 MARCH - 26 OCTOBER 2019 (S19)

# 2019

KEY FIGURES	S18	S19	+/-
Cleared Airport Slots	157,343	155,083	-1.4%
Seats offered (1000)	26,935	26,634	-1.1%
Seats per Airport Slot	171	172	0.3%
Runway Utilisation	71.6%	69.9%	-1.7%
Number of Carriers	73	66	-7

Note: For comparison reasons S18 figures (31 season weeks) are transposed to reflect S19's 30 season weeks!

### TABLE OF CONTENTS

	Page
Overview Main Carriers	2
Runway Histograms	3,4
Slot Shares	5
Traffic Flows, Aircraft Utilisation	6

### GLOSSARY OF TERMS

<b>Allocation</b>	The allocation of slots within declared capacity limits.
<b>Capacity Limits</b>	Limiting parameters declared by the Airport Operator used in the coordination process.
<b>Seats</b>	The number of seats based on the aircraft configuration advised by the airline.

### GUIDE TO HISTOGRAMS

The histograms show the pattern of traffic by time of day against the appropriate capacity limit. Each time period consists of seven columns representing the days-of-week, Monday through Sunday. All histograms are based on a reference week.

For Summer 2019 the reference week is 9-15 September 2019.

## OVERVIEW MAIN CARRIERS

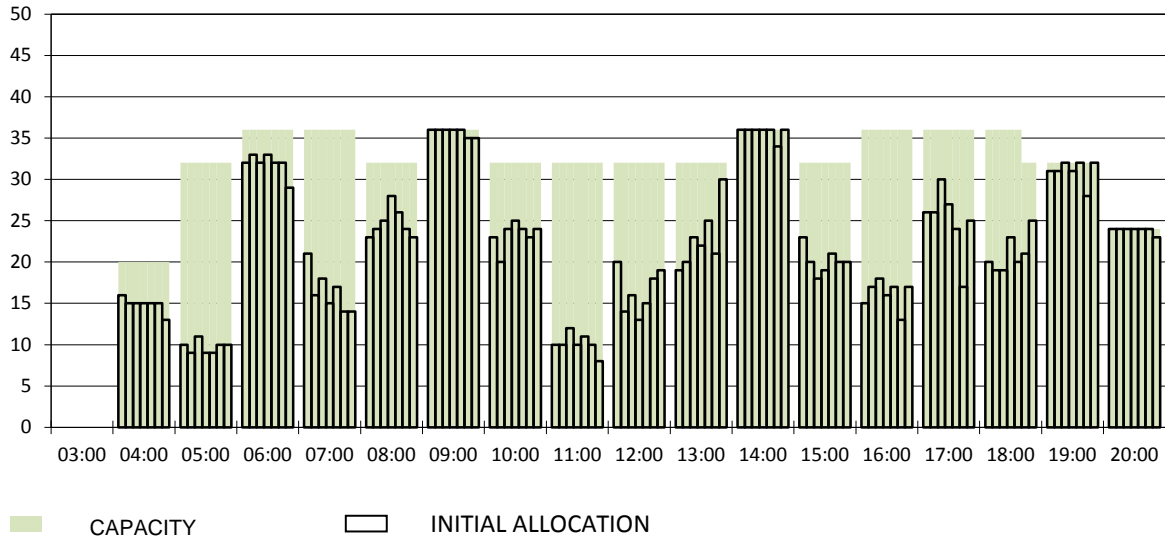
Number of average slots per week

	START OF SEASON			
	S18	S19	+/-	Share
<b>ALL CARRIERS</b>	5245	5169	-1.4%	
<b>Swiss Carriers</b>	3221	3310	2.8%	64.0%
<i>where of</i>				
Swiss International Air Lines	2730	2773	1.6%	53.6%
Edelweiss Air	353	391	10.8%	7.6%
Germania Flug AG	124	140	12.9%	2.7%
Helvetic	14	6	-57.1%	0.1%
<b>Foreign Carriers</b>	2024	1859	-8.2%	36.0%
<i>where of</i>				
Eurowings	159	167	5.0%	3.2%
Lufthansa	135	137	1.5%	2.7%
Easyjet	168	132	-21.4%	2.6%
British Airways/BA CityFlyer	119	125	5.0%	2.4%
Austrian Airlines	90	90	0.0%	1.7%
KLM	82	82	0.0%	1.6%
TAP Air Portugal	69	69	0.0%	1.3%
Turkish Airlines	62	62	0.0%	1.2%
SAS Scandinavian Airlines	66	59	-10.6%	1.1%
Air France	62	57	-8.1%	1.1%
<b>Maj. foreign Carriers</b>	1012	980	-3.2%	19.0%

SLOT RETURN			
S18	S19	+/-	Share
5396	5217	-3.3%	
3257	3322	2.0%	63.7%
2802	2809	0.2%	53.8%
344	378	9.9%	7.2%
102	131	28.4%	2.5%
9	4	-55.6%	0.1%
2139	1895	-11.4%	36.3%
169	167	-1.2%	3.2%
137	138	0.7%	2.6%
194	145	-25.3%	2.8%
119	125	5.0%	2.4%
90	91	1.1%	1.7%
82	82	0.0%	1.6%
69	69	0.0%	1.3%
62	62	0.0%	1.2%
66	59	-10.6%	1.1%
62	58	-6.5%	1.1%
1050	996	-5.1%	19.1%

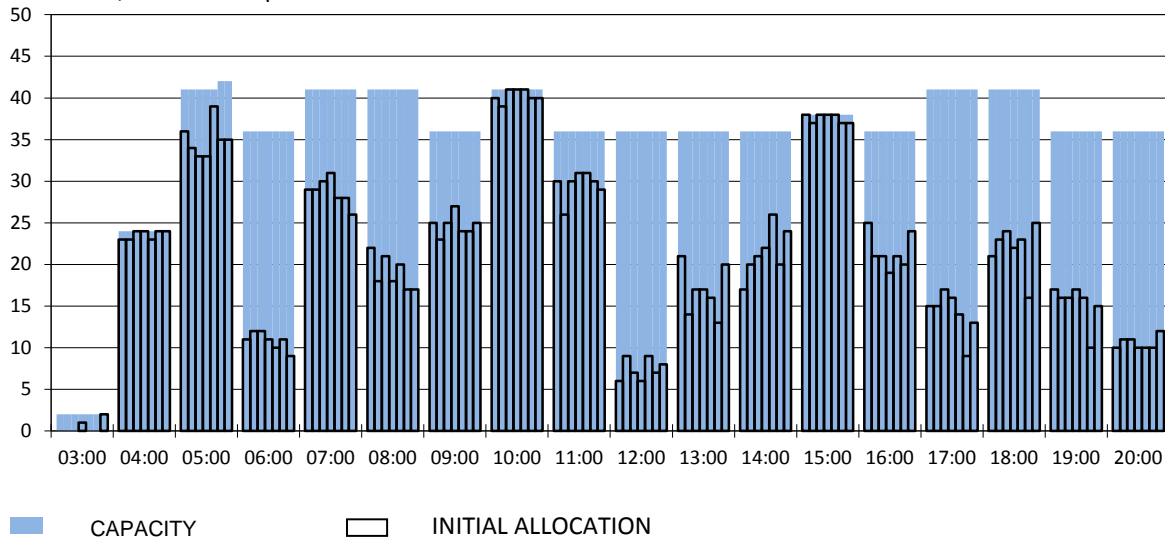
### RUNWAY MOVEMENT START OF SEASON - ARRIVALS

Reference week, movements per hour - all times UTC



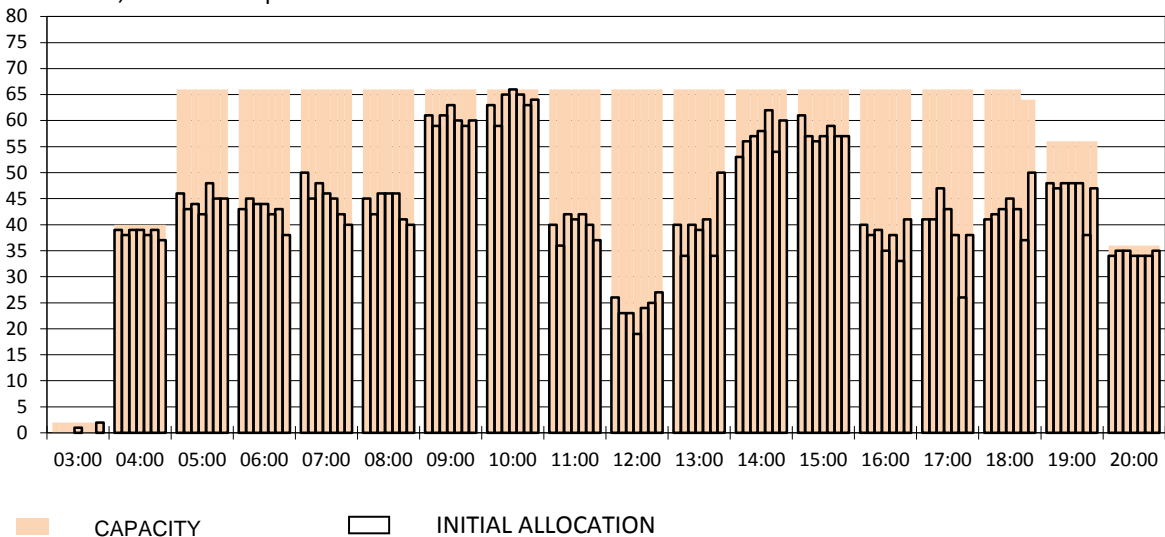
### RUNWAY MOVEMENT START OF SEASON - DEPARTURES

Reference week, movements per hour - all times UTC



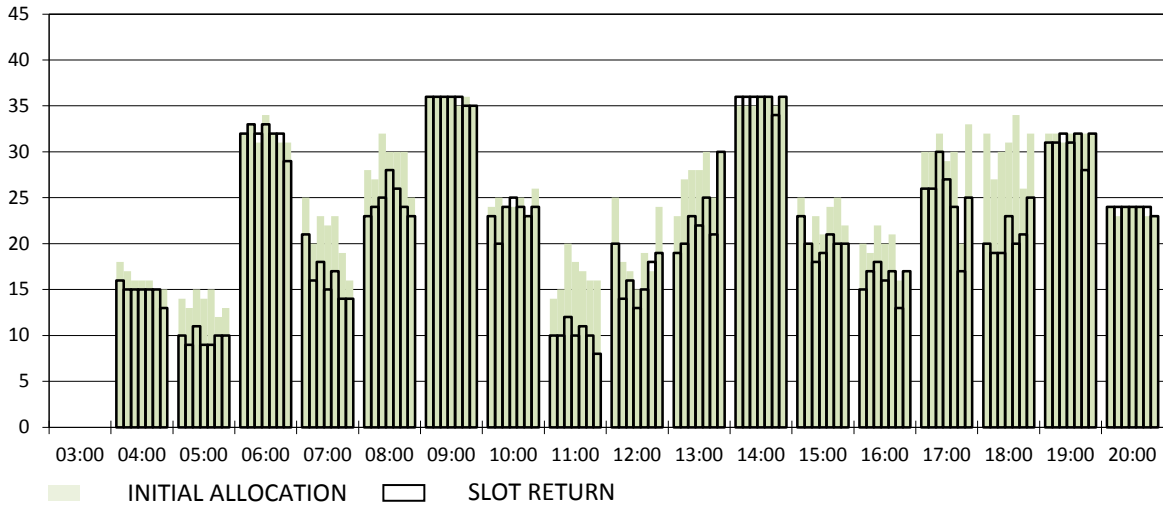
### RUNWAY MOVEMENT START OF SEASON - TOTALS

Reference week, movements per hour - all times UTC



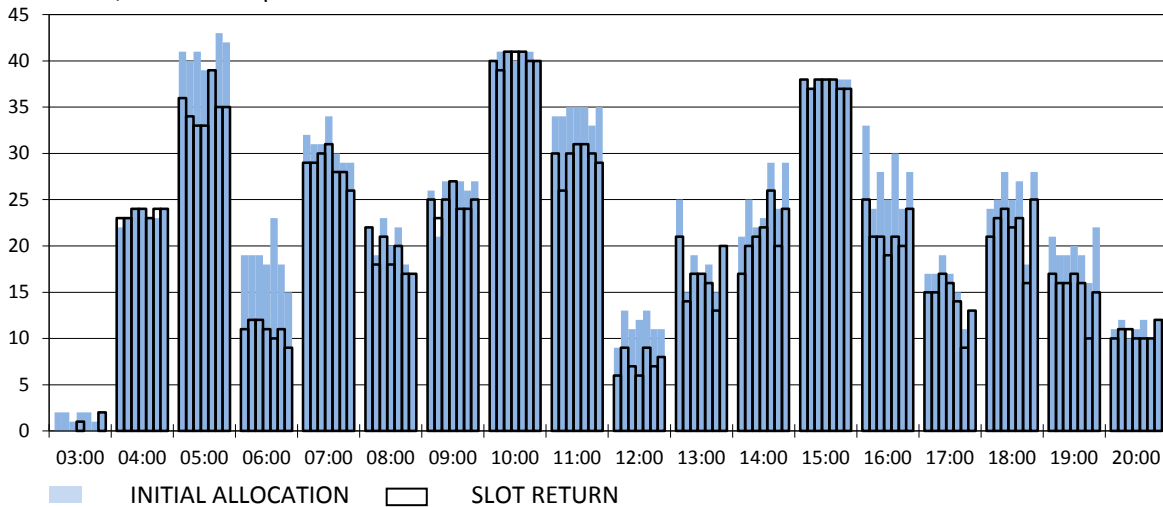
**RUNWAY MOVEMENT DEVELOPMENT INITIAL ALLOCATION TO START OF SEASON - ARRIVALS**

Reference week, movements per hour - all times UTC



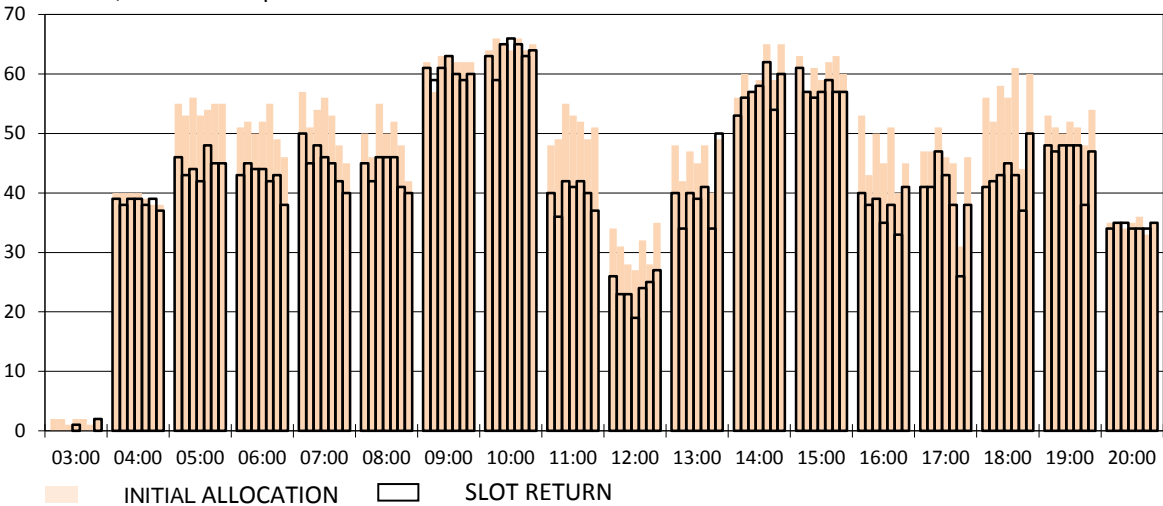
**RUNWAY MOVEMENT DEVELOPMENT INITIAL ALLOCATION TO START OF SEASON - DEPARTURES**

Reference week, movements per hour - all times UTC



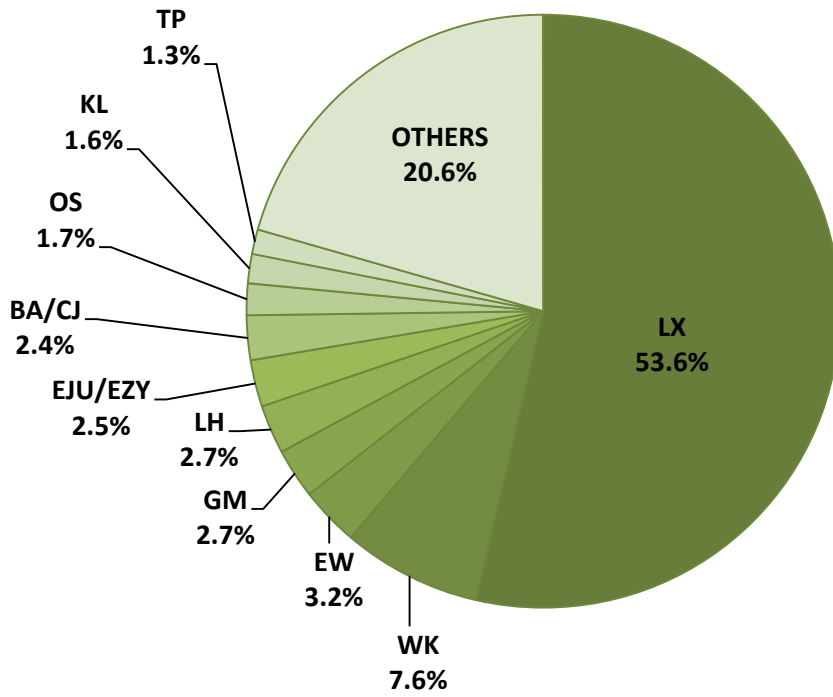
**RUNWAY MOVEMENT DEVELOPMENT INITIAL ALLOCATION TO START OF SEASON - TOTALS**

Reference week, movements per hour - all times UTC

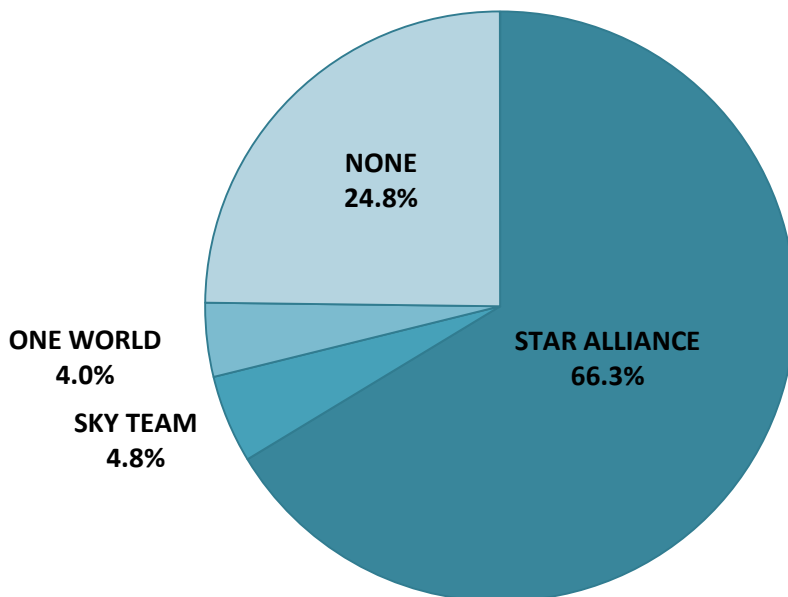


NOTE: Above histograms show the slot development including waitlist improvements done during slot return processing

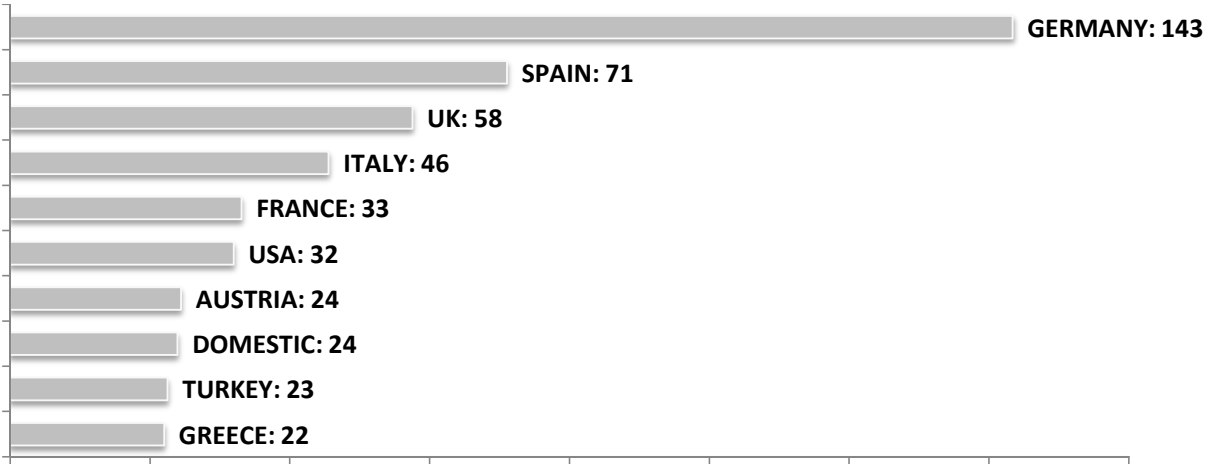
### SEASONAL SLOT SHARE - 10 TOP CARRIER



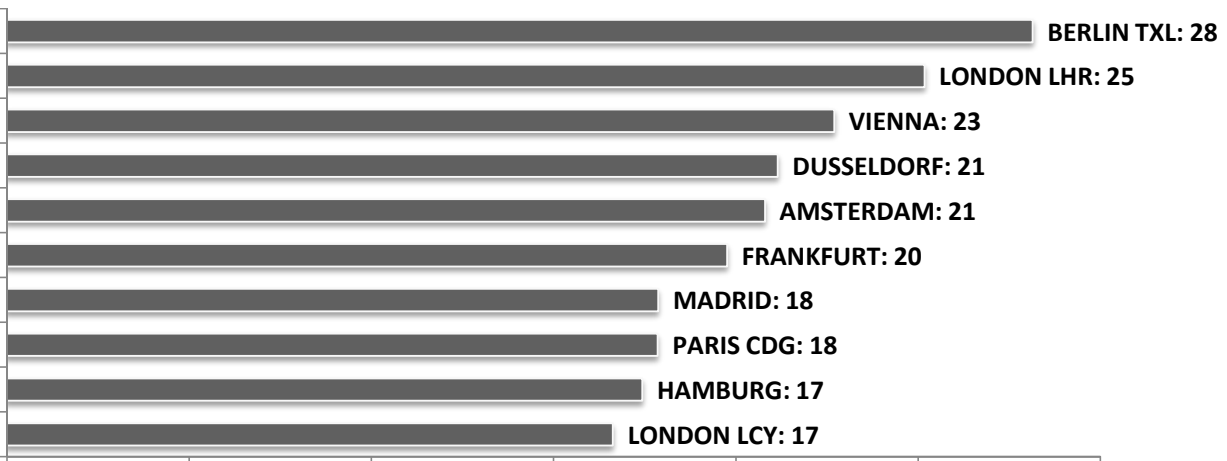
### SEASONAL SLOT SHARE - PER ALLIANCES



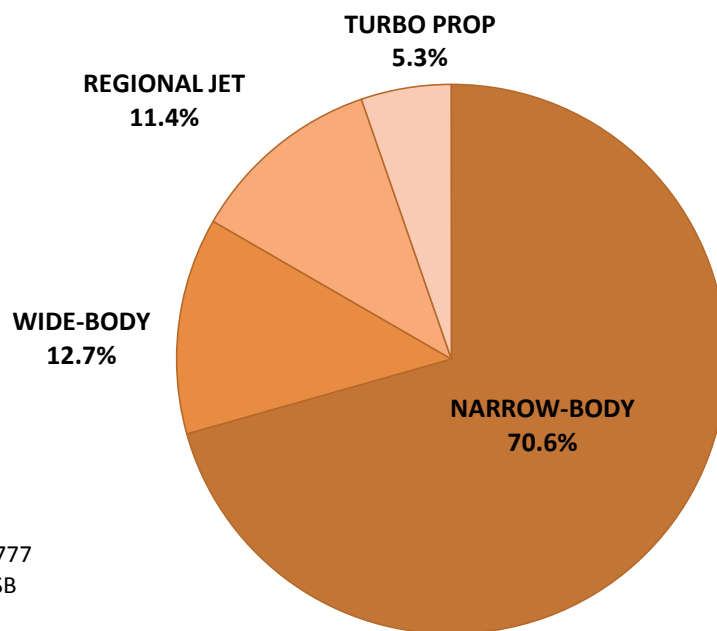
**TOP 10 COUNTRIES - Number of Daily Slots**



**TOP 10 ROUTES - Number of Daily Slots**



**AIRCRAFT UTILISATION**



**Aircraft Sizes**  
 Widebody e.g. A330, A350, B777  
 Narrowbody e.g. A32S, B737, CSB  
 Regional Jet e.g. ARJ, CRJ, ERJ  
 Turbo Prop e.g. ATR, DH4, S20