

START OF SEASON REPORT GENEVA WINTER SEASON

27 OCTOBER 2019 - 29 MARCH 2020 (W19)

2019

KEY FIGURES	W18	W19	+/-
Cleared Airport Slots	63,142	61,865	-2.0%
Seats (1000)	10,045	10,979	9.3%
Seats per Airport Slot	159	177	11.6%
Runway Utilisation Days 1-5	69.1%	67.1%	-2.0%
Runway Utilisation Day 6	90.2%	91.1%	0.9%
Runway Utilisation Day 7	85.4%	85.6%	0.2%
Number of Carriers	63	65	2

TABLE OF CONTENTS

	Page
Management Summary	2
Overview Main Carriers	3
Runway Histograms	4
Terminal Histograms	5
Slot Shares	6
Traffic Flows, Aircraft Utilisation	7

GLOSSARY OF TERMS

Allocation	The allocation of slots within declared capacity limits.
Capacity Limits	Limiting parameters declared by the Airport Operator used in the coordination process.
Seats	The number of seats based on the aircraft configuration advised by the airline.

GUIDE TO HISTOGRAMS

The histograms show the pattern of traffic by time of day against the appropriate capacity limit. Each time period consists of seven columns representing the days-of-week, Monday through Sunday. All histograms are based on a reference week.

For Winter 2019 the reference week is 10-16 February 2020.

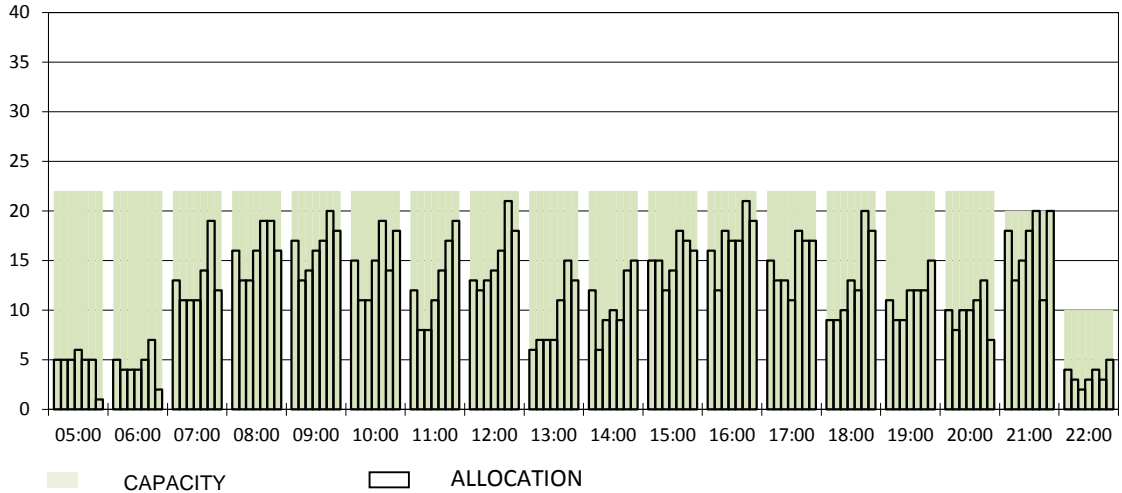
OVERVIEW MAIN CARRIERS

Number of average slots per week

	START OF SEASON				SLOT RETURN			
	W18	W19	+/-	Share	W18	W19	+/-	Share
ALL CARRIERS	2870	2812	-2.0%		2881	2818	-2.2%	
Swiss Carriers	900	987	9.7%	35.1%	905	988	9.2%	35.1%
<i>where of</i>								
EasyJet Switzerland	529	520	-1.7%	18.5%	533	521	-2.3%	18.5%
Swiss International Air Lines	369	465	26.0%	16.5%	370	465	25.7%	16.5%
Chair	2	2	0.0%	0.1%	2	2	0.0%	0.1%
Foreign Carriers	1970	1825	-7.4%	64.9%	1976	1830	-7.4%	64.9%
<i>where of</i>								
EasyJet Europe&UK	457	456	-0.2%	16.2%	461	458	-0.7%	16.3%
British Airways / BA CityFlyer	205	190	-7.3%	6.8%	205	190	-7.3%	6.7%
Air France	129	124	-3.9%	4.4%	130	124	-4.6%	4.4%
KLM	83	83	0.0%	3.0%	83	83	0.0%	2.9%
Brussels Airlines	77	76	-1.3%	2.7%	77	77	0.0%	2.7%
TAP Air Portugal	66	67	1.5%	2.4%	66	70	6.1%	2.5%
Alitalia	60	59	-1.7%	2.1%	64	60	-6.3%	2.1%
Iberia	53	53	0.0%	1.9%	53	53	0.0%	1.9%
Austrian Airlines	48	47	-2.1%	1.7%	48	48	0.0%	1.7%
Lufthansa	171	40	-76.6%	1.4%	171	40	-76.6%	1.4%
Maj. foreign Carriers	1349	1195	-11.4%	42.5%	1358	1203	-11.4%	42.7%

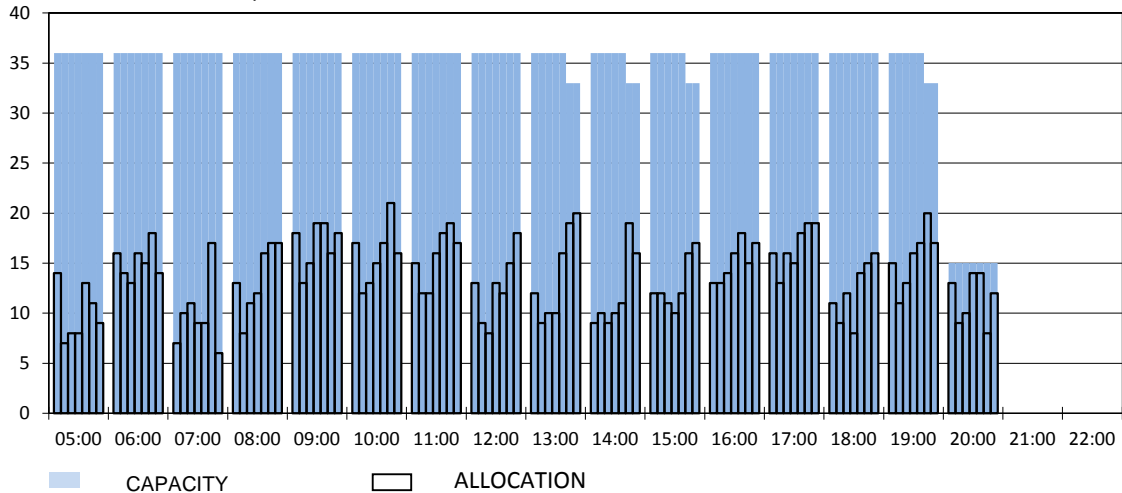
RUNWAY MOVEMENT START OF SEASON - ARRIVALS

Reference week, movements per hour - all times UTC



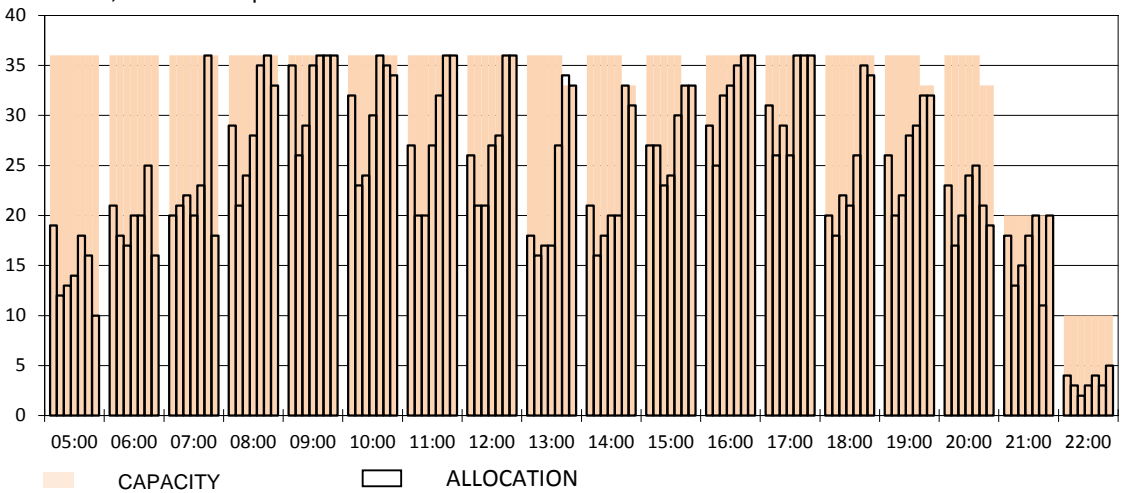
RUNWAY MOVEMENT START OF SEASON - DEPARTURES

Reference week, movements per hour - all times UTC



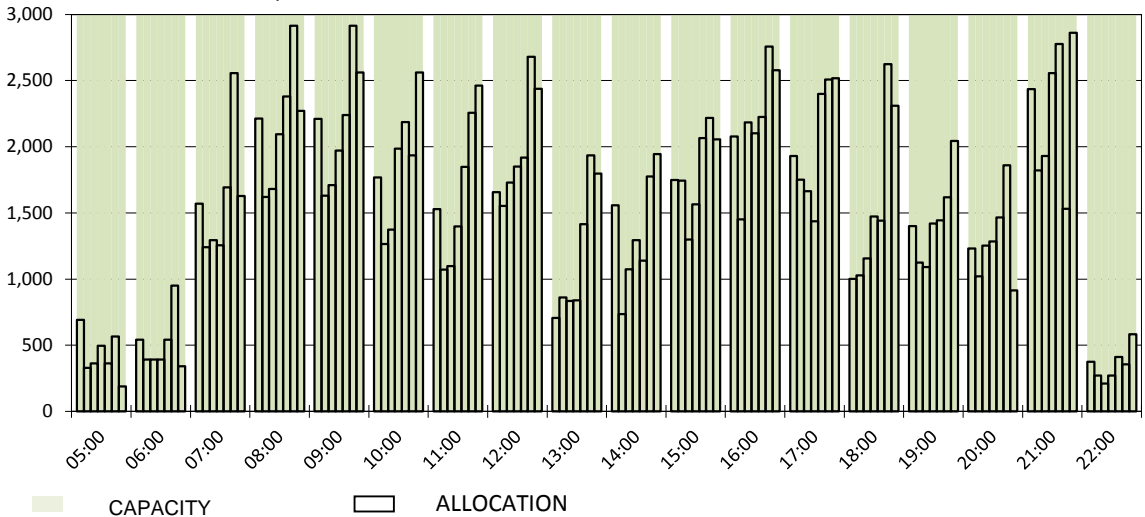
RUNWAY MOVEMENT START OF SEASON - TOTALS

Reference week, movements per hour - all times UTC



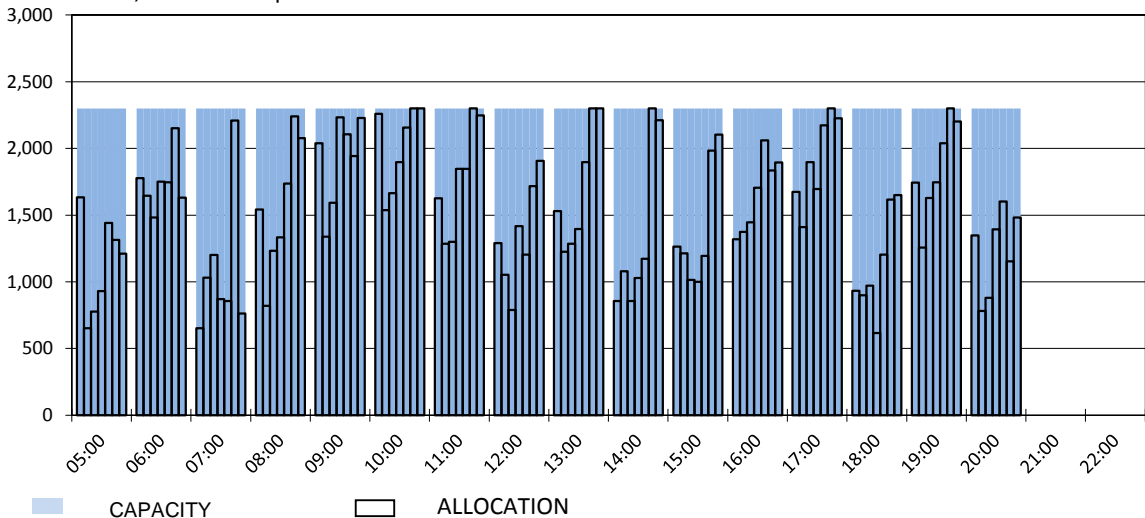
MAIN TERMINAL START OF SEASON - ARRIVALS

Reference week, movements per hour - all times UTC



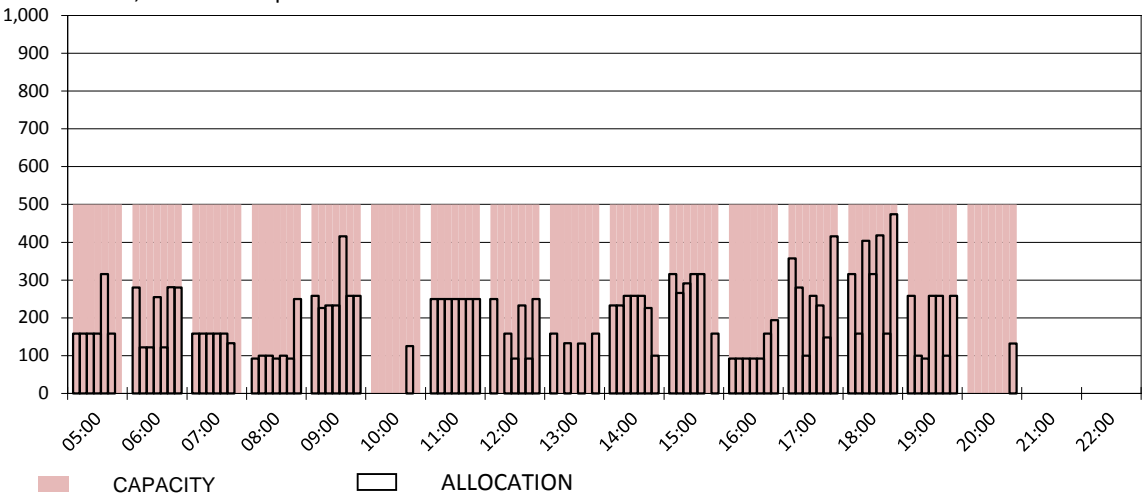
MAIN TERMINAL START OF SEASON - DEPARTURES

Reference week, movements per hour - all times UTC

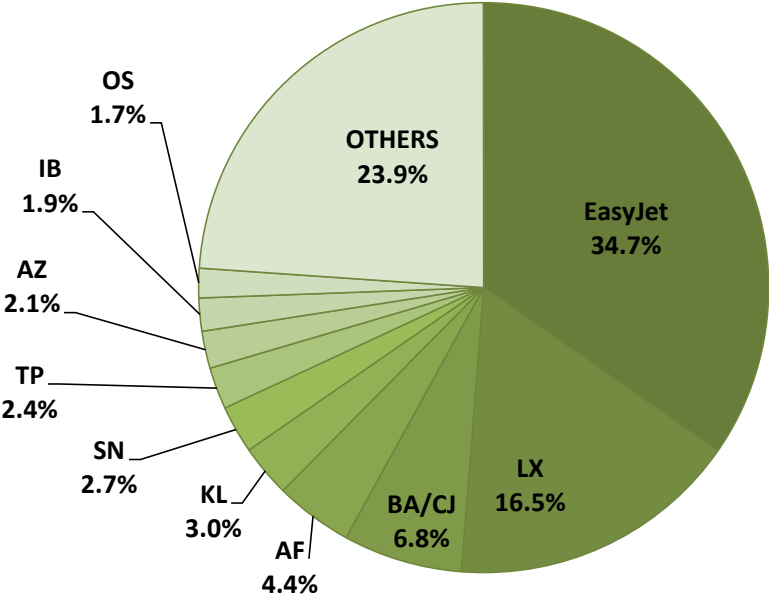


FRENCH SECTOR TERMINAL START OF SEASON - DEPARTURES

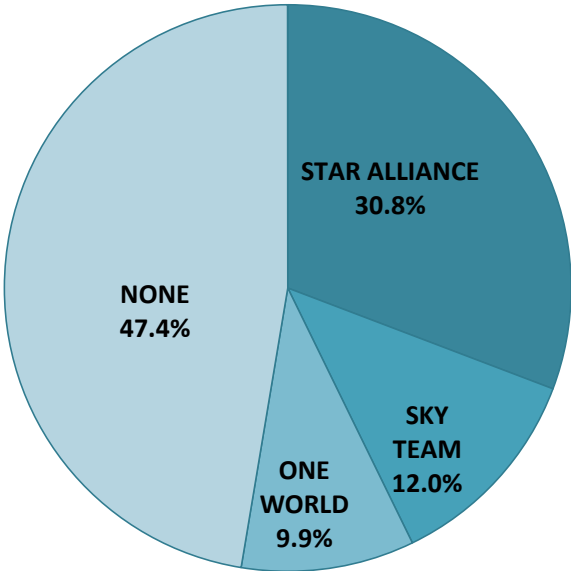
Reference week, movements per hour - all times UTC



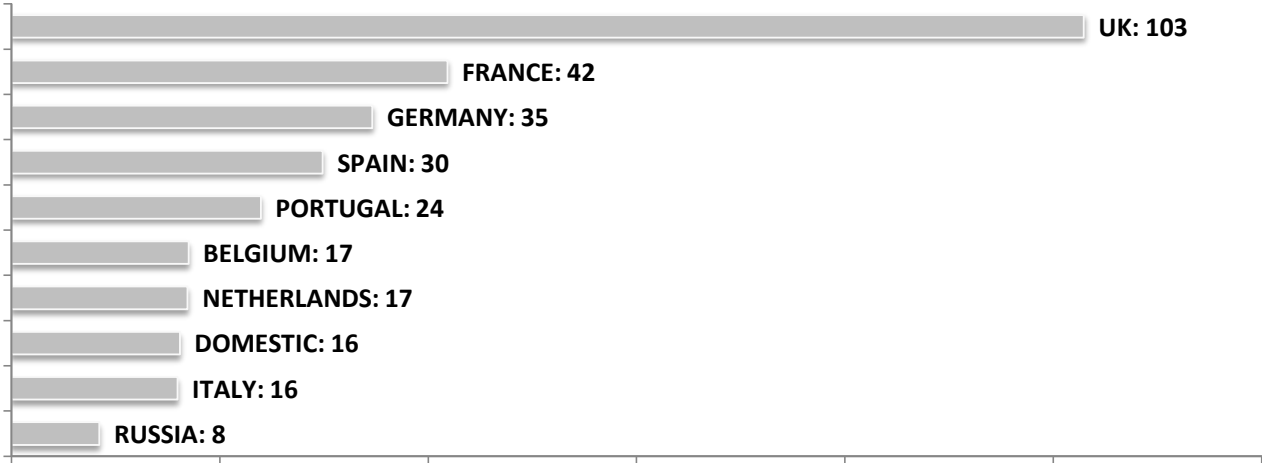
SEASONAL SLOT SHARE - 10 TOP CARRIER



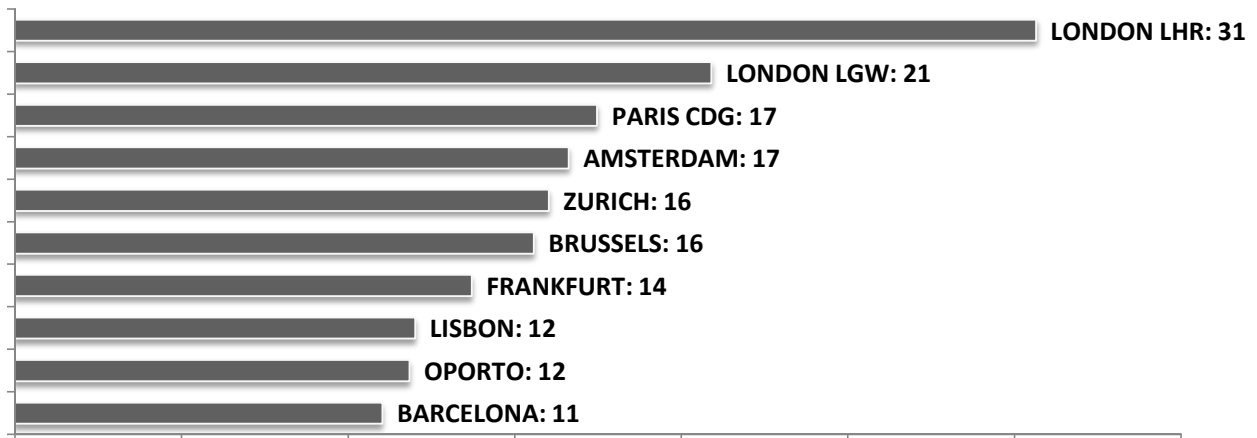
SEASONAL SLOT SHARE - PER ALLIANCES



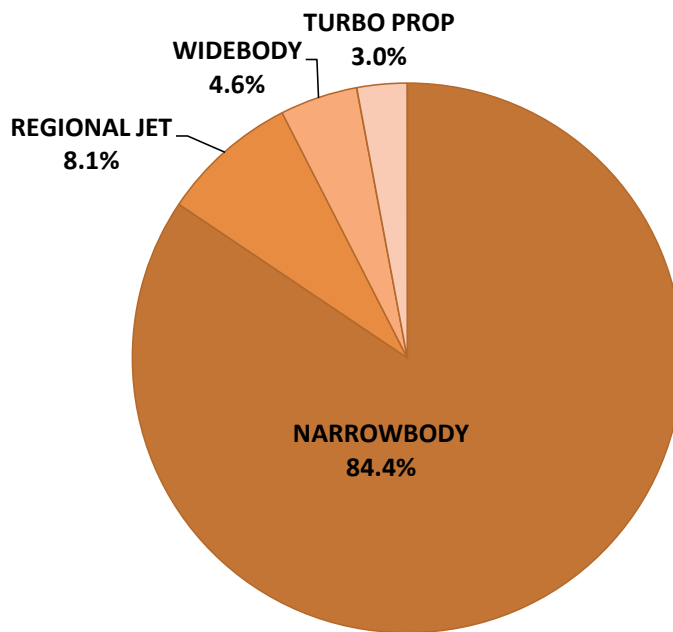
TOP 10 COUNTRIES - Number of Daily Slots



TOP 10 ROUTES - Number of Daily Slots



AIRCRAFT UTILISATION



Aircraft Sizes
 Widebody e.g. A330, A340, B777
 Narrowbody e.g. A220, A32S, B737
 Regional Jet e.g. ARJ, CRJ, ERJ
 Turbo Prop e.g. ATR, DH4, S20