

START OF SEASON REPORT ZURICH WINTER SEASON

27 OCTOBER 2019 - 28 MARCH 2020 (W19)

2019

KEY FIGURES	W18	W19	+/-
Cleared Airport Slots	97,838	90,995	-7.0%
Seats offered (1000)	16,811	16,070	-4.4%
Seats per Airport Slot	172	177	2.8%
Runway Utilisation	60.7%	56.0%	-4.8%
Number of Carriers	56	56	0

TABLE OF CONTENTS

	Page
Management Summary	2
Overview Main Carriers	3
Runway Histograms	4,5
Slot Shares	6
Traffic Flows, Aircraft Utilisation	7

GLOSSARY OF TERMS

Allocation	The allocation of slots within declared capacity limits.
Capacity Limits	Limiting parameters declared by the Airport Operator used in the coordination process.
Seats	The number of seats based on the aircraft configuration advised by the airline.

GUIDE TO HISTOGRAMS

The histograms show the pattern of traffic by time of day against the appropriate capacity limit. Each time period consists of seven columns representing the days-of-week, Monday through Sunday. All histograms are based on a reference week.

For Winter 2019 the reference week is 10-16 February 2020.

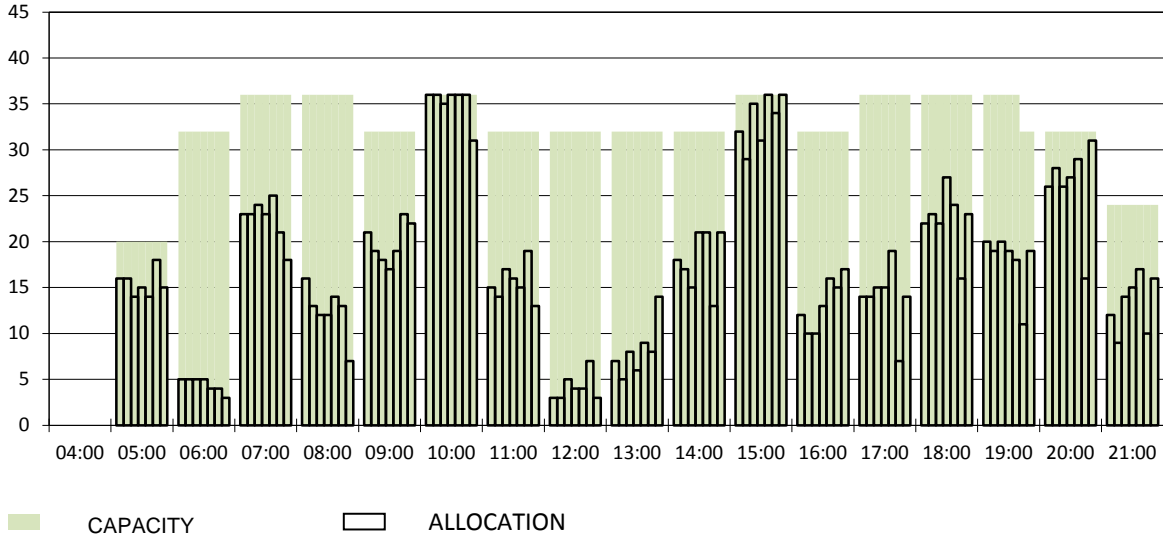
OVERVIEW MAIN CARRIERS

Number of average slots per week

	START OF SEASON				SLOT RETURN			
	W18	W19	+/-	Share	W18	W19	+/-	Share
ALL CARRIERS	4447	4136	-7.0%		4564	4271	-6.4%	
Swiss Carriers	2740	2594	-5.3%	62.7%	2797	2668	-4.6%	62.5%
<i>where of</i>								
Swiss International Air Lines	2439	2318	-5.0%	56.0%	2501	2385	-4.6%	55.8%
Edelweiss Air	234	215	-8.1%	5.2%	234	224	-4.3%	5.2%
Chair Airlines	61	58	-4.9%	1.4%	59	58	-1.7%	1.4%
Helvetic	6	3	-50.0%	0.1%	3	1	-66.7%	0.0%
Foreign Carriers	1707	1542	-9.7%	37.3%	1767	1603	-9.3%	37.5%
<i>where of</i>								
Eurowings	185	141	-23.8%	3.4%	203	141	-30.5%	3.3%
Lufthansa	135	136	0.7%	3.3%	135	136	0.7%	3.2%
British Airways/BA CityFlyer	132	127	-3.8%	3.1%	132	127	-3.8%	3.0%
Easyjet	136	105	-22.8%	2.5%	137	107	-21.9%	2.5%
KLM	82	82	0.0%	2.0%	82	82	0.0%	1.9%
Austrian Airlines	75	75	0.0%	1.8%	75	76	1.3%	1.8%
TAP Air Portugal	67	67	0.0%	1.6%	67	73	9.0%	1.7%
SAS Scandinavian Airlines	63	60	-4.8%	1.5%	63	60	-4.8%	1.4%
Air France	60	53	-11.7%	1.3%	61	54	-11.5%	1.3%
Turkish Airlines	48	48	0.0%	1.2%	48	48	0.0%	1.1%
Maj. foreign Carriers	983	894	-9.1%	21.6%	1003	904	-9.9%	21.2%

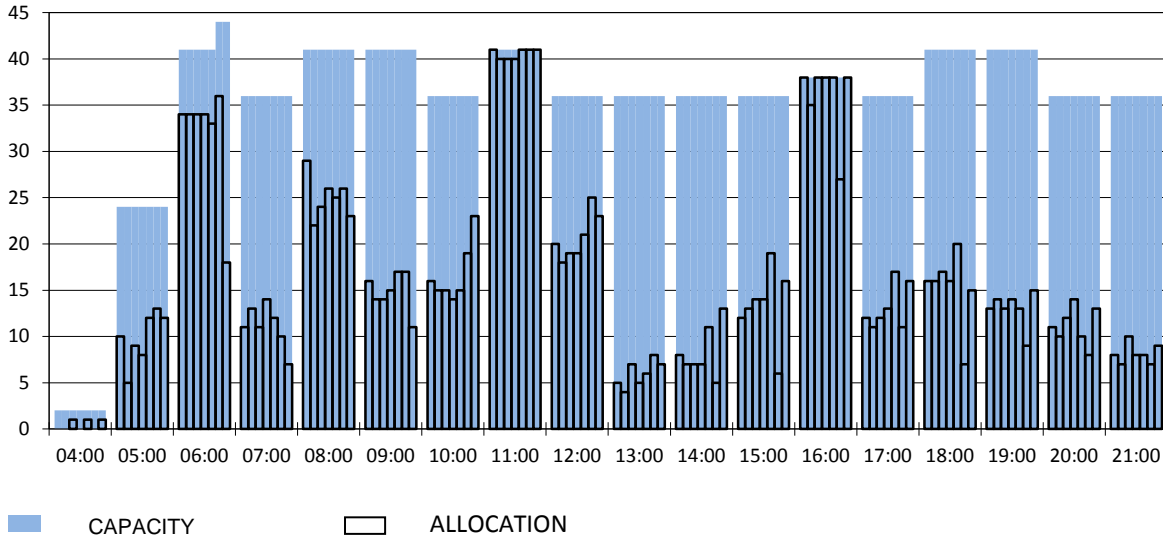
RUNWAY MOVEMENT START OF SEASON - ARRIVALS

Reference week, movements per hour - all times UTC



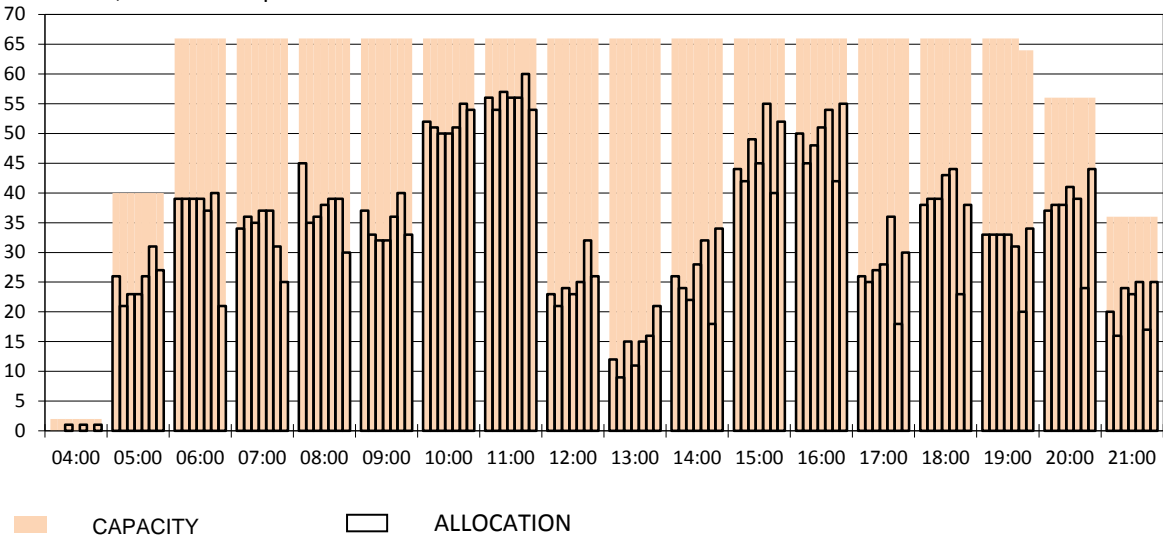
RUNWAY MOVEMENT START OF SEASON - DEPARTURES

Reference week, movements per hour - all times UTC



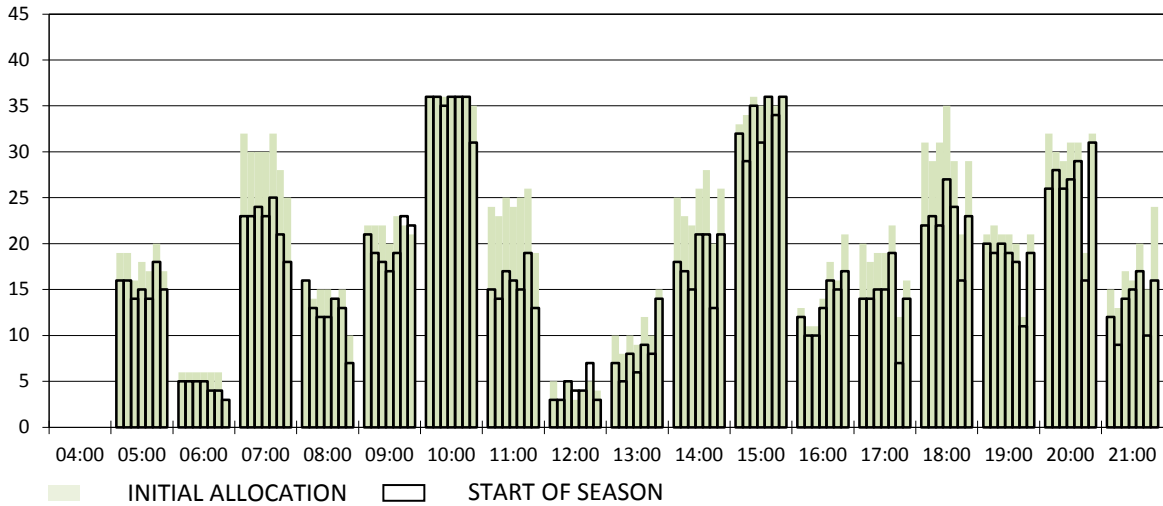
RUNWAY MOVEMENT START OF SEASON - TOTALS

Reference week, movements per hour - all times UTC



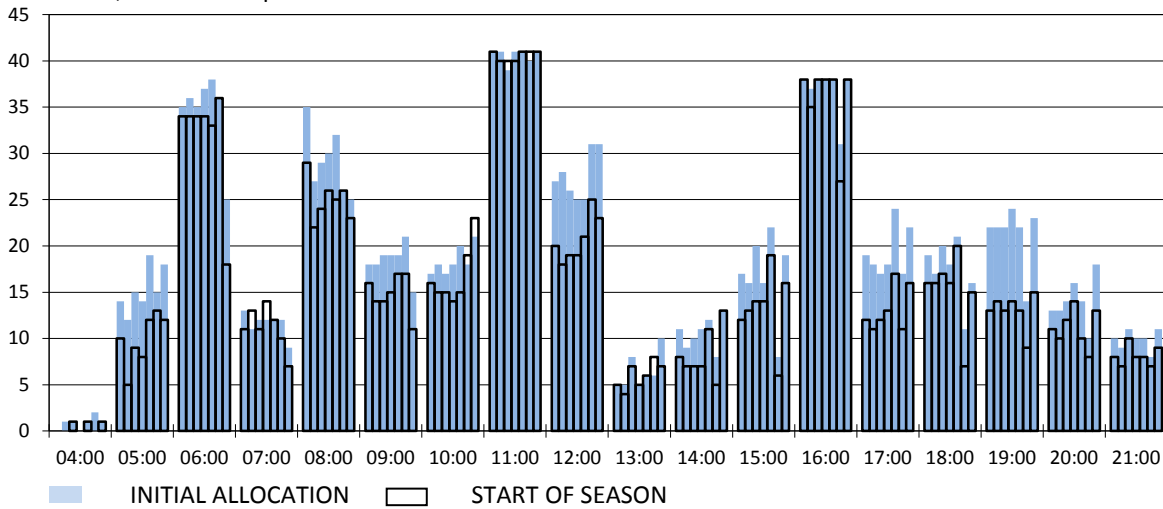
RUNWAY MOVEMENT DEVELOPMENT INITIAL ALLOCATION TO START OF SEASON - ARRIVALS

Reference week, movements per hour - all times UTC



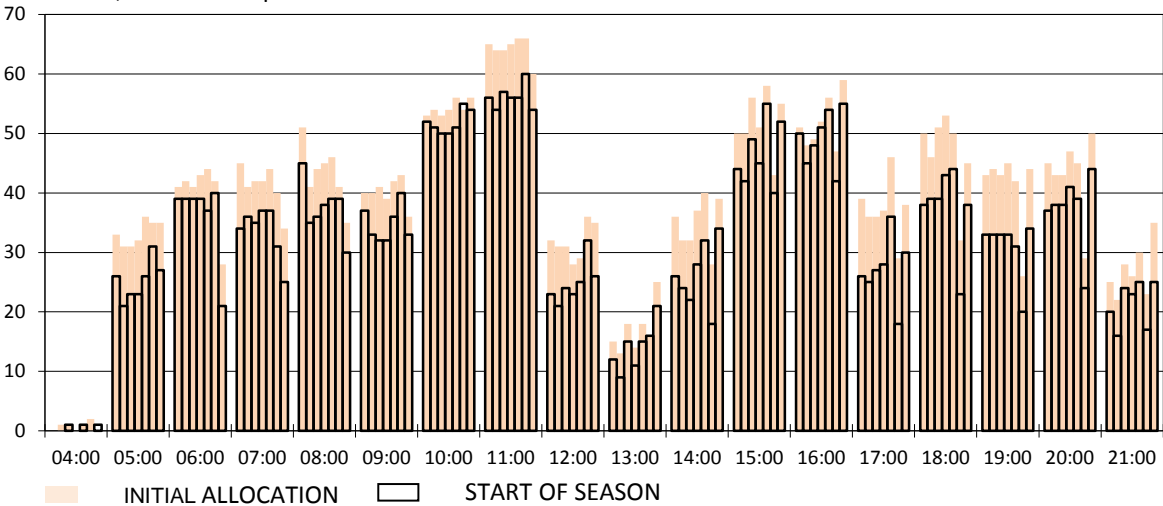
RUNWAY MOVEMENT DEVELOPMENT INITIAL ALLOCATION TO START OF SEASON - DEPARTURES

Reference week, movements per hour - all times UTC

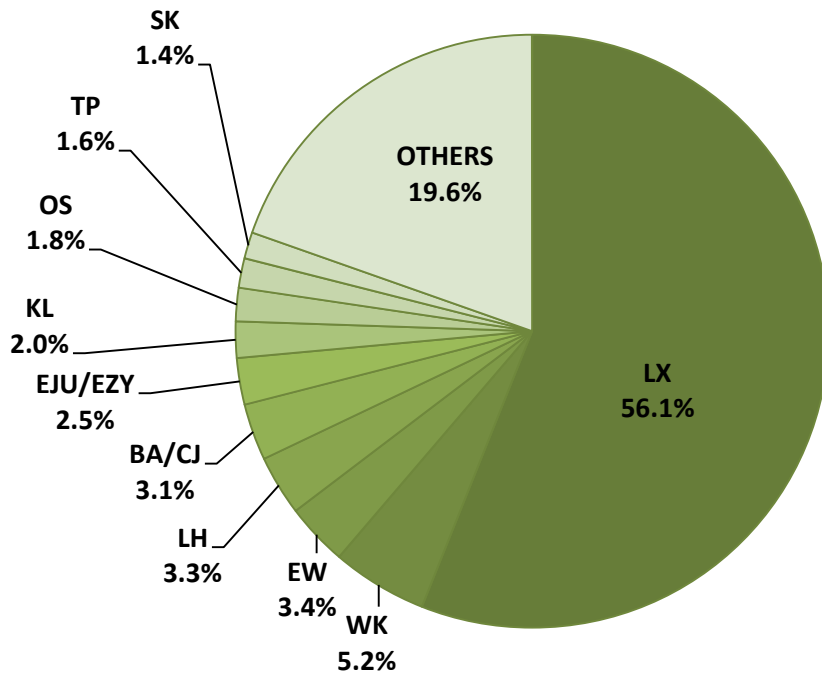


RUNWAY MOVEMENT DEVELOPMENT INITIAL ALLOCATION TO START OF SEASON - TOTALS

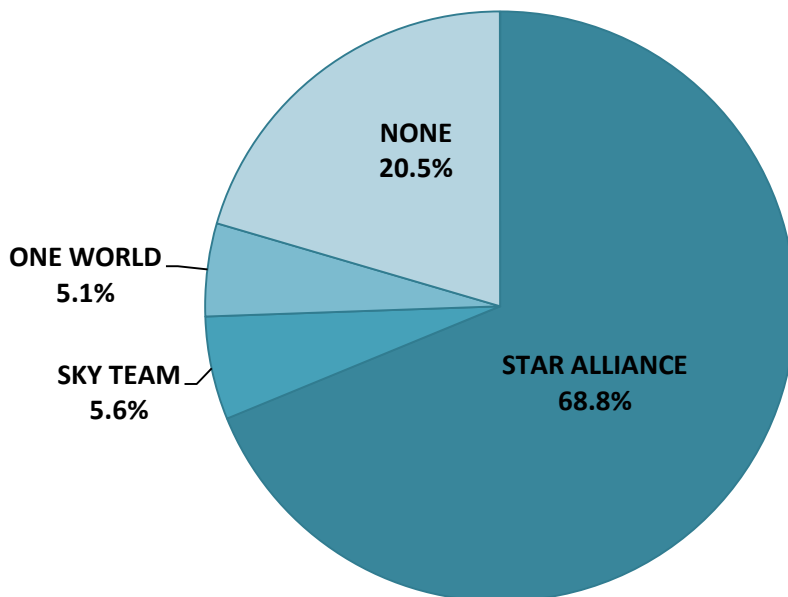
Reference week, movements per hour - all times UTC



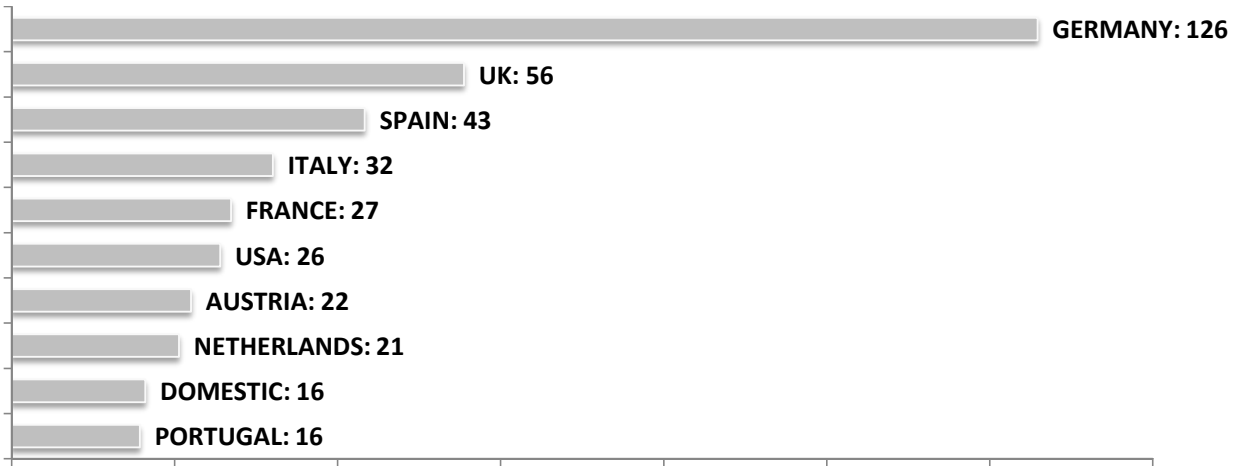
SEASONAL SLOT SHARE - 10 TOP CARRIER



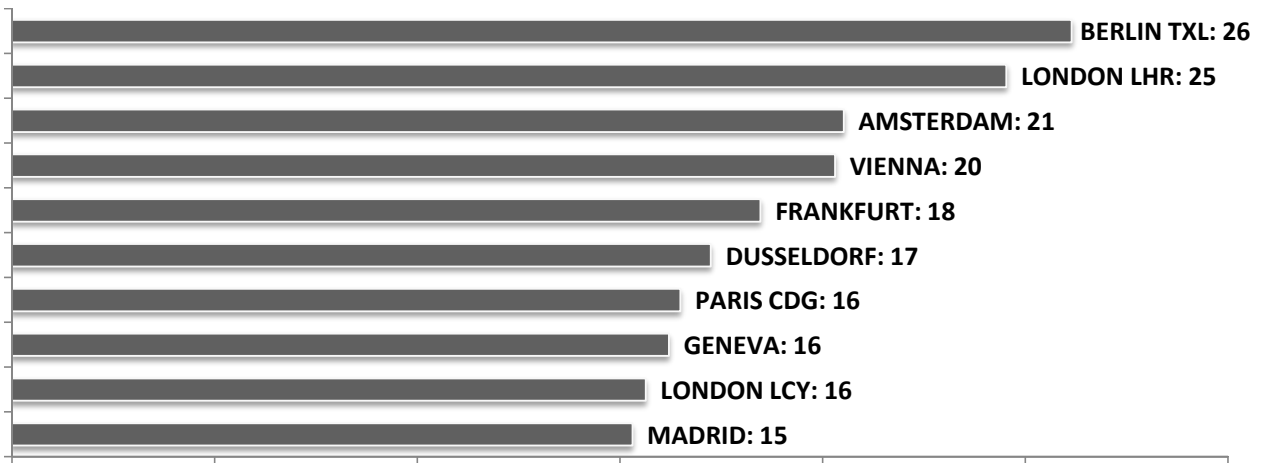
SEASONAL SLOT SHARE - PER ALLIANCES



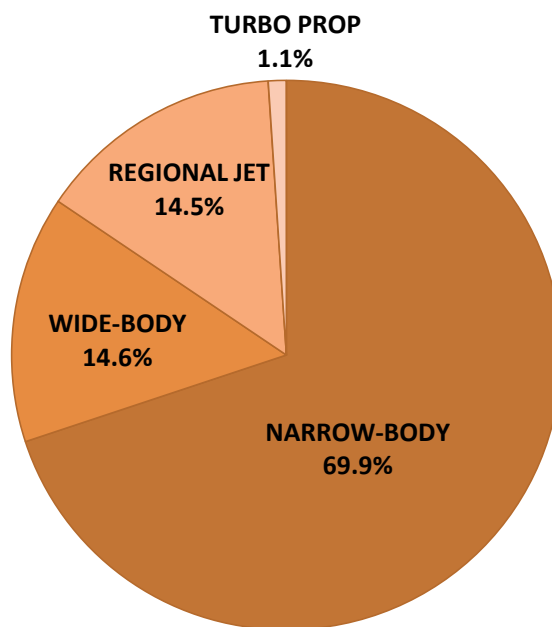
TOP 10 COUNTRIES - Number of Daily Slots



TOP 10 ROUTES - Number of Daily Slots



AIRCRAFT UTILISATION



Aircraft Sizes

- Widebody e.g. A330, B767, B777
- Narrowbody e.g. A220, A32S, B737
- Regional Jet e.g. ARJ, CRJ, EMJ
- Turbo Prop e.g. ATR, DH4, S20