

START OF SEASON REPORT ZURICH SUMMER SEASON

29 MARCH - 24 OCTOBER 2020 (S20)

2020

KEY FIGURES	S19	S20	+/-
Cleared Airport Slots	155,083	122,766	-20.8%
Seats offered (1000)	26,634	21,674	-18.6%
Seats per Airport Slot	172	177	2.8%
Runway Utilisation	69.9%	55.2%	-14.7%
Number of Carriers	66	64	-2

due to Corona COVID-19 outbreak a total of 25'895 slots were cancelled until 5 April!

TABLE OF CONTENTS

	Page
Overview Main Carriers	2
Runway Histograms	3,4
Slot Shares	5
Traffic Flows, Aircraft Utilisation	6

GLOSSARY OF TERMS

Allocation	The allocation of slots within declared capacity limits.
Capacity Limits	Limiting parameters declared by the Airport Operator used in the coordination process.
Seats	The number of seats based on the aircraft configuration advised by the airline.

GUIDE TO HISTOGRAMS

The histograms show the pattern of traffic by time of day against the appropriate capacity limit. Each time period consists of seven columns representing the days-of-week, Monday through Sunday. All histograms are based on a reference week. For Summer 2020 the reference week is 14 -20 September 2020.

OVERVIEW MAIN CARRIERS

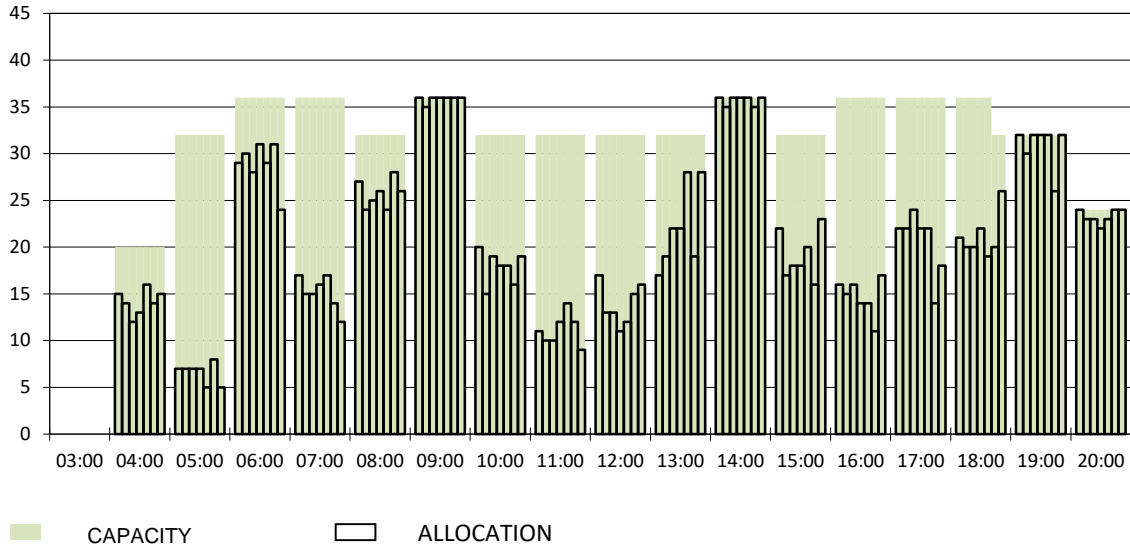
Number of average slots per week

	START OF SEASON			
	S19	S20	+/-	Share
ALL CARRIERS	5169	4092	-20.8%	
Swiss Carriers	3310	2634	-20.4%	64.4%
<i>where of</i>				
Swiss International Air Lines	2773	2215	-20.1%	54.1%
Edelweiss Air	391	335	-14.3%	8.2%
Chair Airlines	140	71	-49.3%	1.7%
Helvetic	6	13	116.7%	0.3%
Foreign Carriers	1859	1458	-21.6%	35.6%
<i>where of</i>				
Lufthansa	137	121	-11.7%	3.0%
Eurowings	167	105	-37.1%	2.6%
Easyjet	132	90	-31.8%	2.2%
British Airways/BA CityFlyer	125	85	-32.0%	2.1%
Austrian Airlines	90	73	-18.9%	1.8%
KLM	82	70	-14.6%	1.7%
Turkish Airlines	62	55	-11.3%	1.3%
TAP Air Portugal	69	54	-21.7%	1.3%
SAS Scandinavian Airlines	59	51	-13.6%	1.2%
Vueling	56	45	-19.6%	1.1%
Maj. foreign Carriers	979	749	-23.5%	18.3%

SLOT RETURN			
S19	S20	+/-	Share
5201	4998	-3.9%	
3322	3195	-3.8%	63.9%
2809	2692	-4.2%	53.9%
378	389	2.9%	7.8%
131	109	-16.8%	2.2%
4	5	25.0%	0.1%
1879	1803	-4.0%	36.1%
138	138	0.0%	2.8%
167	146	-12.6%	2.9%
145	108	-25.5%	2.2%
125	119	-4.8%	2.4%
91	88	-3.3%	1.8%
82	82	0.0%	1.6%
62	64	3.2%	1.3%
69	68	-1.4%	1.4%
59	61	3.4%	1.2%
56	62	10.7%	1.2%
994	936	-5.8%	18.7%

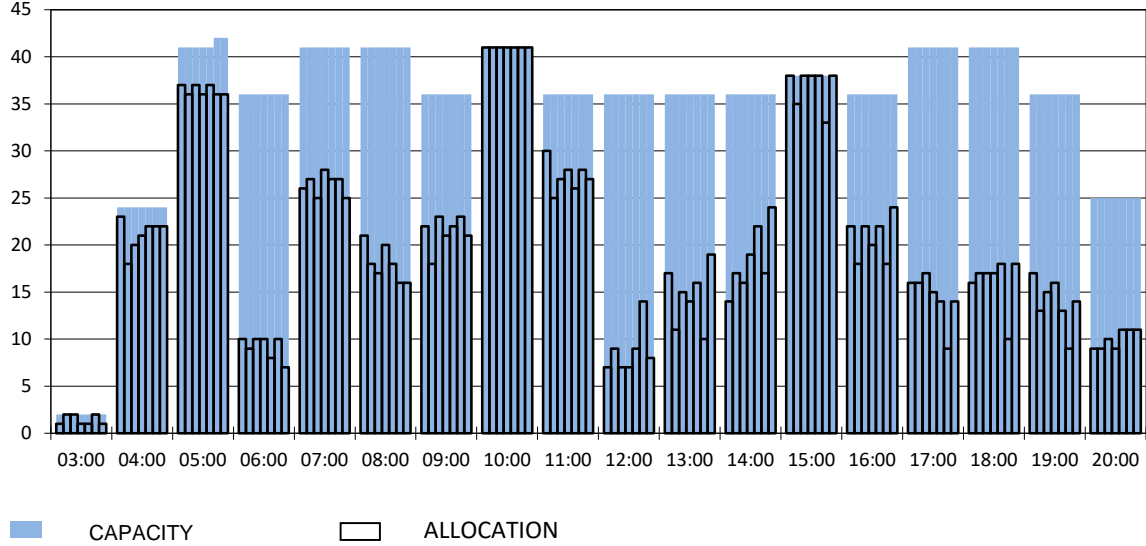
RUNWAY MOVEMENT START OF SEASON - ARRIVALS

Reference week, movements per hour - all times UTC



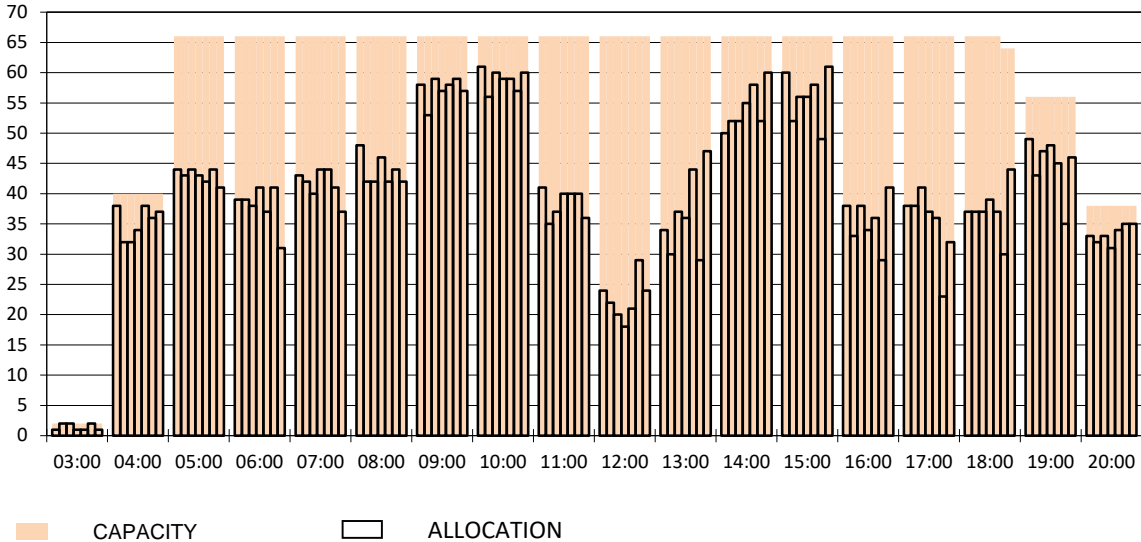
RUNWAY MOVEMENT START OF SEASON - DEPARTURES

Reference week, movements per hour - all times UTC



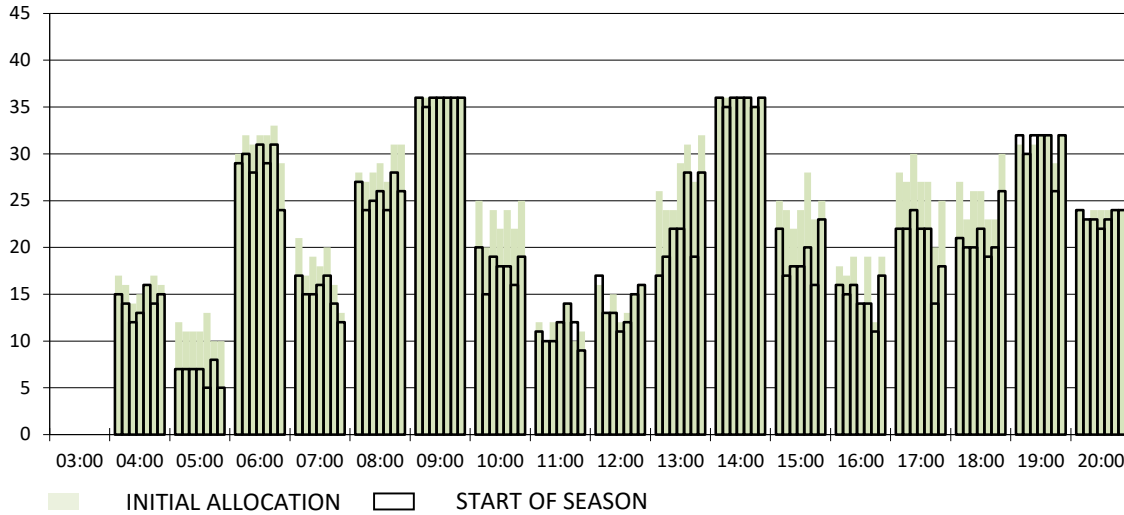
RUNWAY MOVEMENT START OF SEASON - TOTALS

Reference week, movements per hour - all times UTC



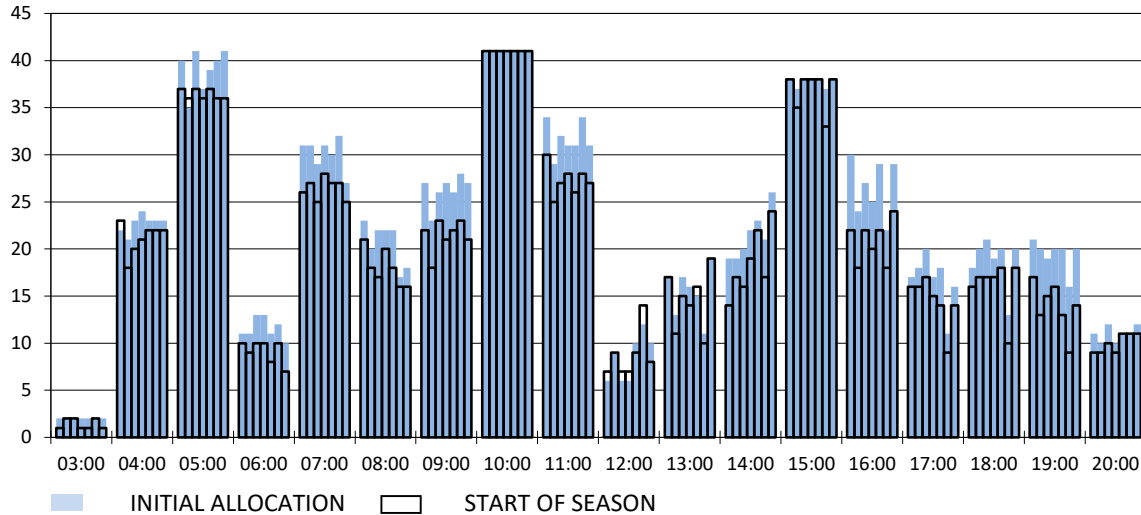
RUNWAY MOVEMENT DEVELOPMENT INITIAL ALLOCATION TO START OF SEASON - ARRIVALS

Reference week, movements per hour - all times UTC



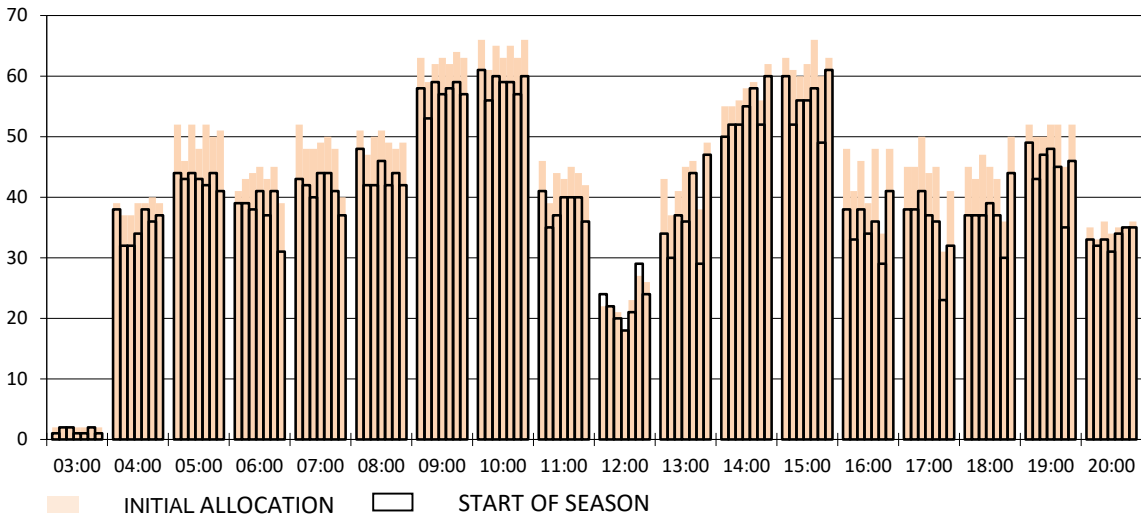
RUNWAY MOVEMENT DEVELOPMENT INITIAL ALLOCATION TO START OF SEASON - DEPARTURES

Reference week, movements per hour - all times UTC



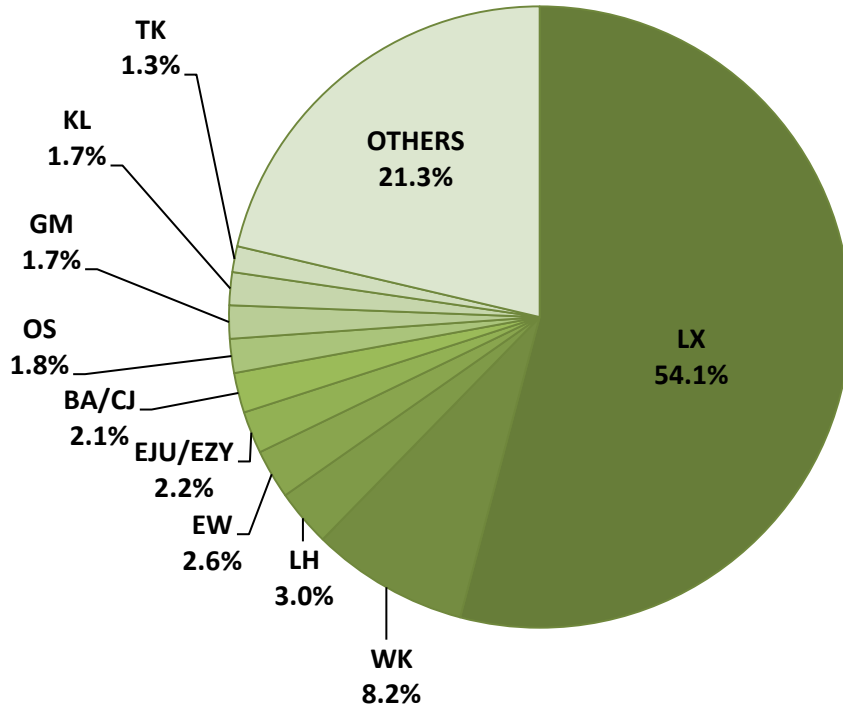
RUNWAY MOVEMENT DEVELOPMENT INITIAL ALLOCATION TO START OF SEASON - TOTALS

Reference week, movements per hour - all times UTC

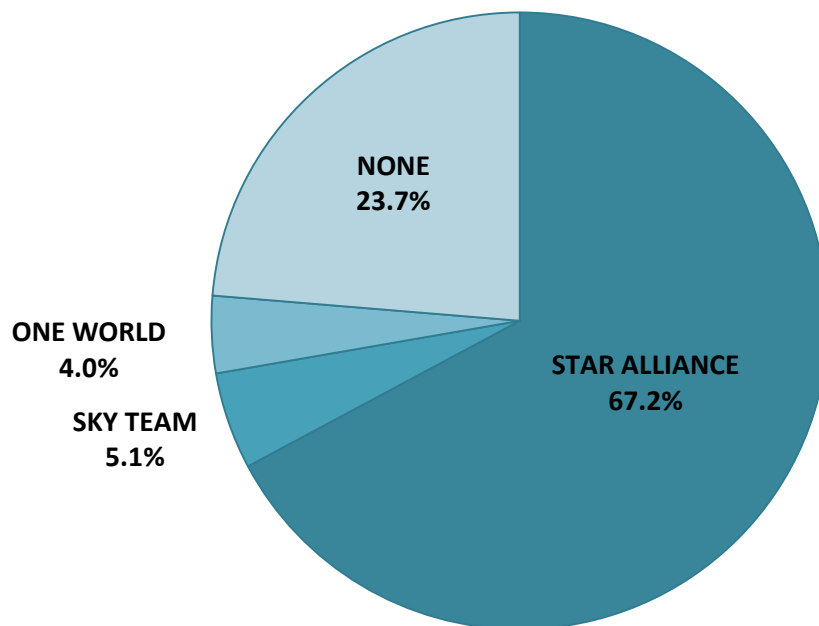


NOTE: Above histograms show the slot development including waitlist improvements done during slot return processing

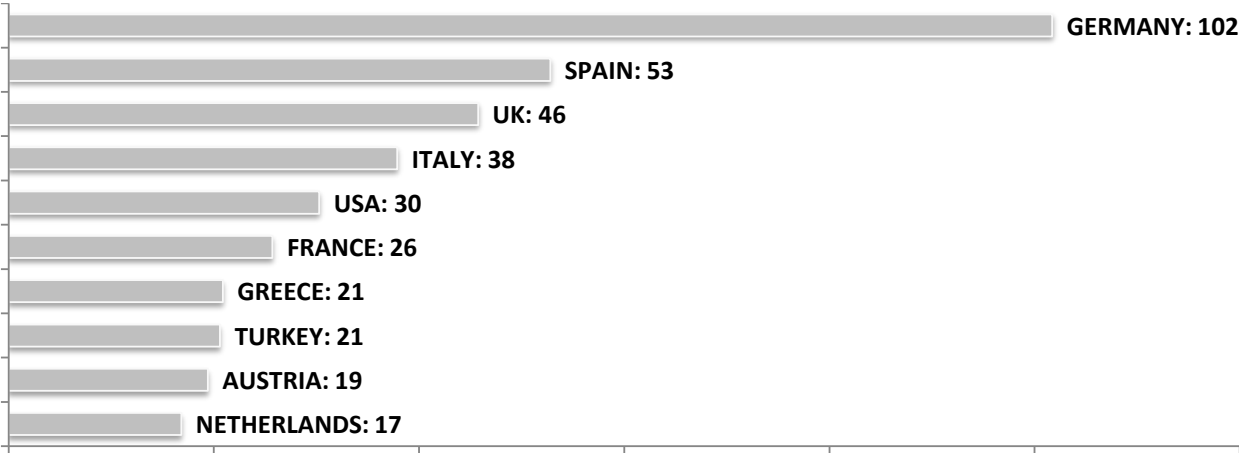
SEASONAL SLOT SHARE - 10 TOP CARRIER



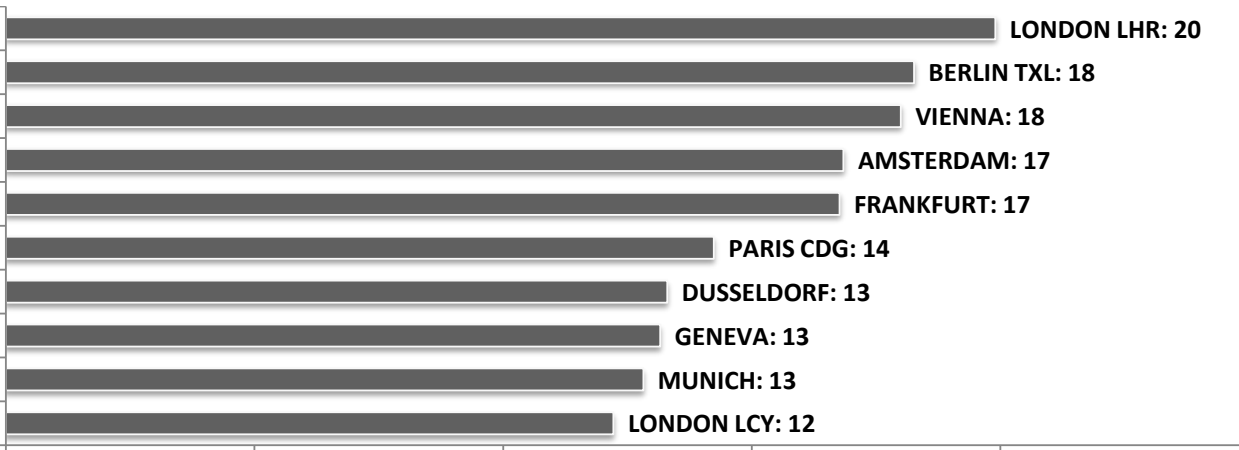
SEASONAL SLOT SHARE - PER ALLIANCES



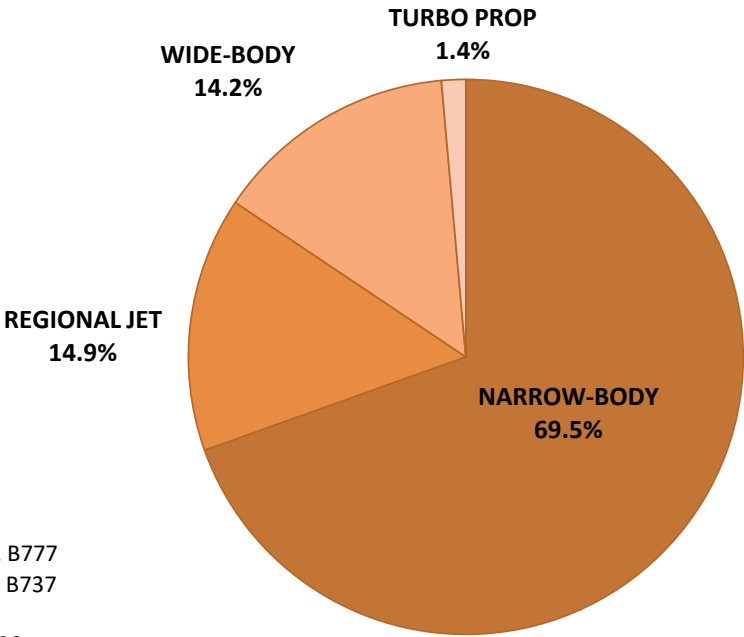
TOP 10 COUNTRIES - Number of Daily Slots



TOP 10 ROUTES - Number of Daily Slots



AIRCRAFT UTILISATION



- Aircraft Sizes**
- Widebody e.g. A330, A350, B777
 - Narrowbody e.g. A220, A32S, B737
 - Regional Jet e.g. CRJ, ERJ
 - Turbo Prop e.g. ATR, DH4, S20