

START OF SEASON REPORT GENEVA SUMMER SEASON

29 MARCH - 24 OCTOBER 2020 (S20)

2020

| KEY FIGURES | S19 | S20 | +/- |
|------------------------|--------|---------------|---------------|
| Airport Slots | 86,417 | 72,373 | -16.3% |
| Seats offered (1000) | 13,869 | 11,766 | -15.2% |
| Seats per Airport Slot | 160 | 163 | 1.6% |
| Runway Utilisation | 67.9% | 56.9% | -11.0% |
| Number of Carriers | 69 | 59 | -10 |

due to Corona COVID-19 outbreak a total of 15'393 slots were cancelled until 7 April!

| TABLE OF CONTENTS | Page |
|-------------------------------------|------|
| Overview Main Carriers | 2 |
| Runway Histograms | 3 |
| Terminal Histograms | 4 |
| Slot Shares | 5 |
| Traffic Flows, Aircraft Utilisation | 6 |

GLOSSARY OF TERMS

| | |
|------------------------|--|
| Allocation | The allocation of slots within declared capacity limits. |
| Capacity Limits | Limiting parameters declared by the Airport Operator used in the coordination process. |
| Seats | The number of seats based on the aircraft configuration advised by the airline. |

GUIDE TO HISTOGRAMS

The histograms show the pattern of traffic by time of day against the appropriate capacity limit. Each time period consists of seven columns representing the days-of-week, Monday through Sunday. All histograms are based on a reference week. For Summer 2020 the reference week is 07-13 September 2020.

OVERVIEW MAIN CARRIERS

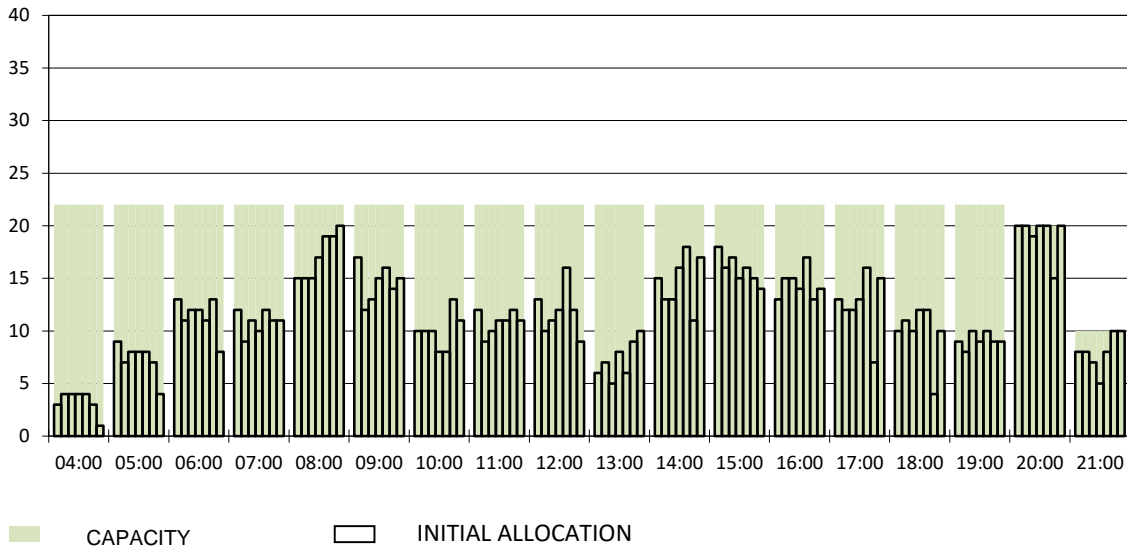
Number of average slots per week

| | START OF SEASON | | | |
|--------------------------------|-----------------|------|--------|-------|
| | S19 | S20 | +/- | Share |
| ALL CARRIERS | 2880 | 2412 | -16.3% | |
| Swiss Carriers | 1180 | 969 | -17.9% | 40.2% |
| <i>where of</i> | | | | |
| EasyJet Switzerland | 654 | 552 | -15.6% | 22.9% |
| Swiss International Air Lines | 524 | 413 | -21.2% | 17.1% |
| Germania Flug AG | 2 | 4 | 100.0% | 0.2% |
| Foreign Carriers | 1700 | 1443 | -15.1% | 59.8% |
| <i>where of</i> | | | | |
| EasyJet Europe & UK | 399 | 323 | -19.0% | 13.4% |
| Lufthansa | 55 | 103 | 87.3% | 4.3% |
| Air France | 117 | 99 | -15.4% | 4.1% |
| British Airways / BA Cityflyer | 136 | 96 | -29.4% | 4.0% |
| KLM | 84 | 72 | -14.3% | 3.0% |
| Brussels Airlines | 74 | 58 | -21.6% | 2.4% |
| Alitalia | 55 | 54 | -1.8% | 2.2% |
| TAP Air Portugal | 69 | 51 | -26.1% | 2.1% |
| Turkish Airlines | 45 | 45 | 0.0% | 1.9% |
| Iberia | 53 | 44 | -17.0% | 1.8% |
| Maj. foreign Carriers | 1087 | 945 | -13.1% | 39.2% |

| SLOT RETURN | | | |
|-------------|------|--------|-------|
| S19 | S20 | +/- | Share |
| 2917 | 2931 | 0.5% | |
| 1195 | 1142 | -4.4% | 39.0% |
| 655 | 654 | -0.2% | 22.3% |
| 538 | 486 | -9.7% | 16.6% |
| 2 | 2 | 0.0% | 0.1% |
| 1722 | 1789 | 3.9% | 61.0% |
| 402 | 403 | 0.2% | 13.7% |
| 55 | 123 | 123.6% | 4.2% |
| 124 | 119 | -4.0% | 4.1% |
| 137 | 123 | -10.2% | 4.2% |
| 84 | 84 | 0.0% | 2.9% |
| 75 | 75 | 0.0% | 2.6% |
| 64 | 62 | -3.1% | 2.1% |
| 69 | 68 | -1.4% | 2.3% |
| 46 | 53 | 15.2% | 1.8% |
| 53 | 52 | -1.9% | 1.8% |
| 1109 | 1162 | 4.8% | 39.6% |

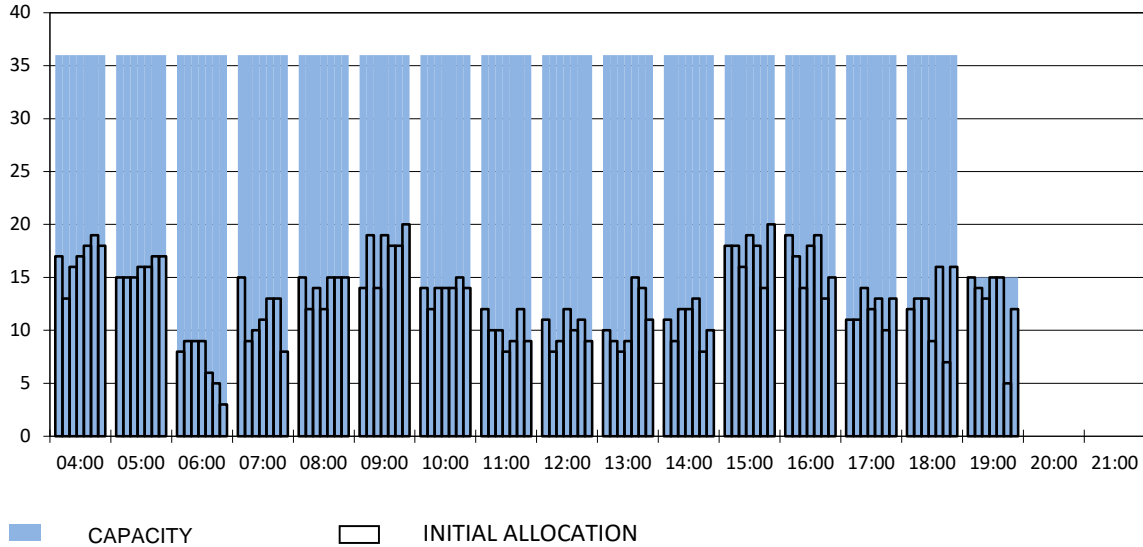
RUNWAY START OF SEASON - ARRIVALS

Reference week, movements per hour - all times UTC



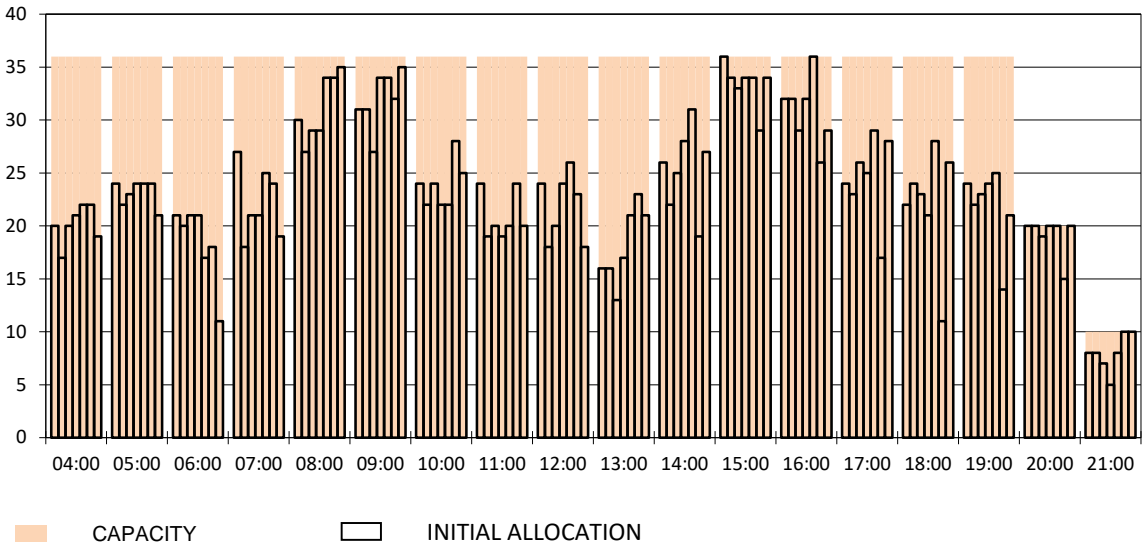
RUNWAY MOVEMENT START OF SEASON - DEPARTURES

Reference week, movements per hour - all times UTC



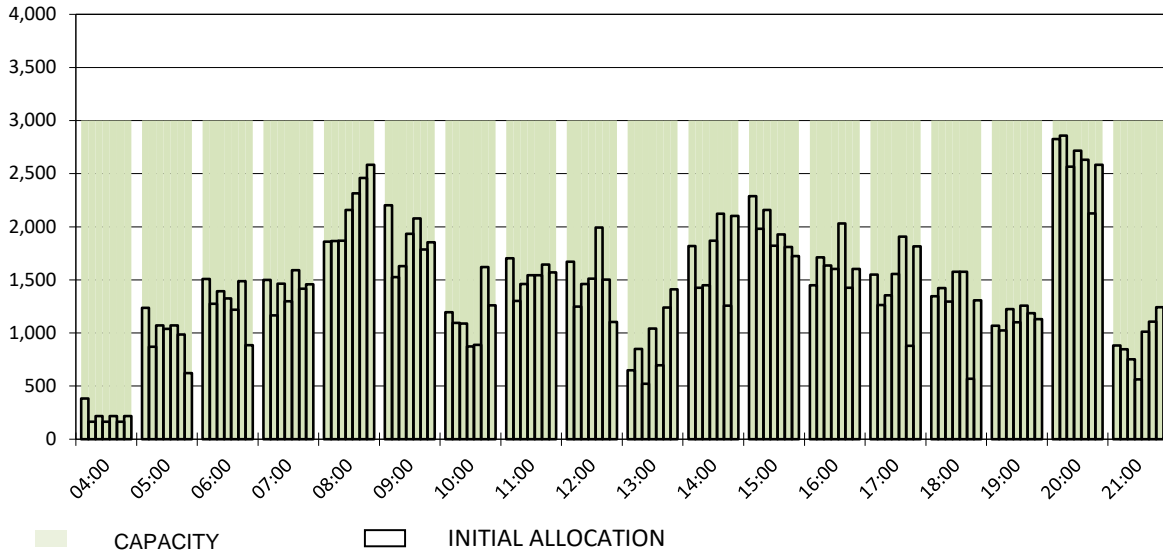
RUNWAY MOVEMENT START OF SEASON - TOTALS

Reference week, movements per hour - all times UTC



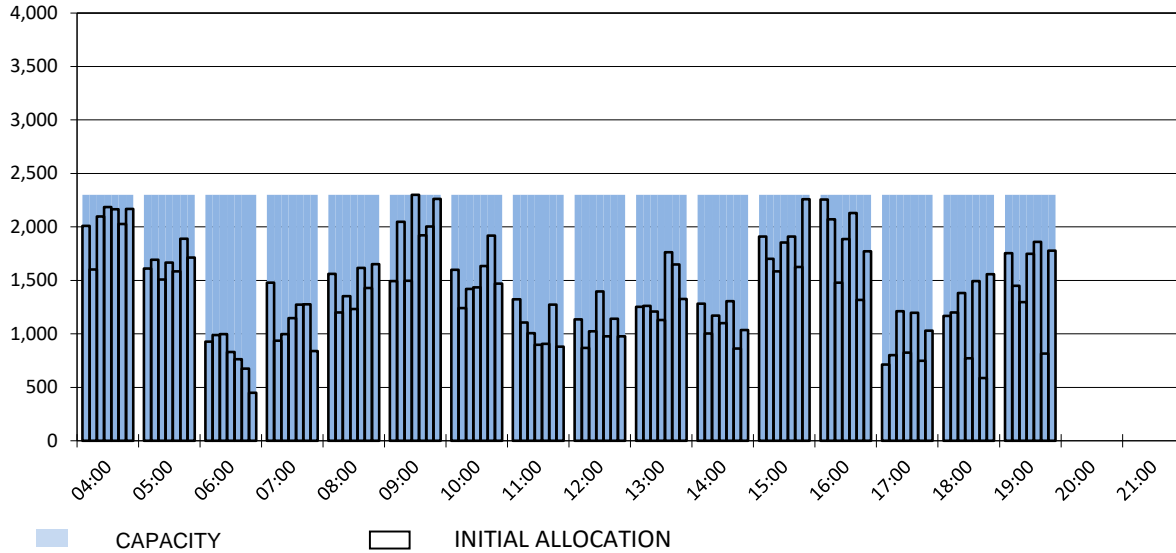
MAIN TERMINAL START OF SEASON - ARRIVALS

Reference week, movements per hour - all times UTC



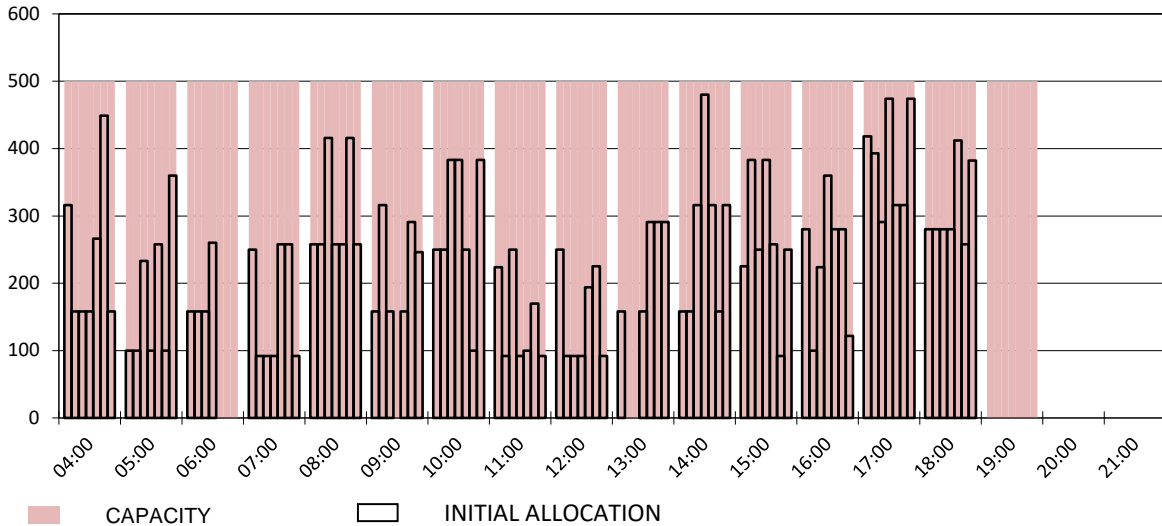
MAIN TERMINAL START OF SEASON - DEPARTURES

Reference week, movements per hour - all times UTC

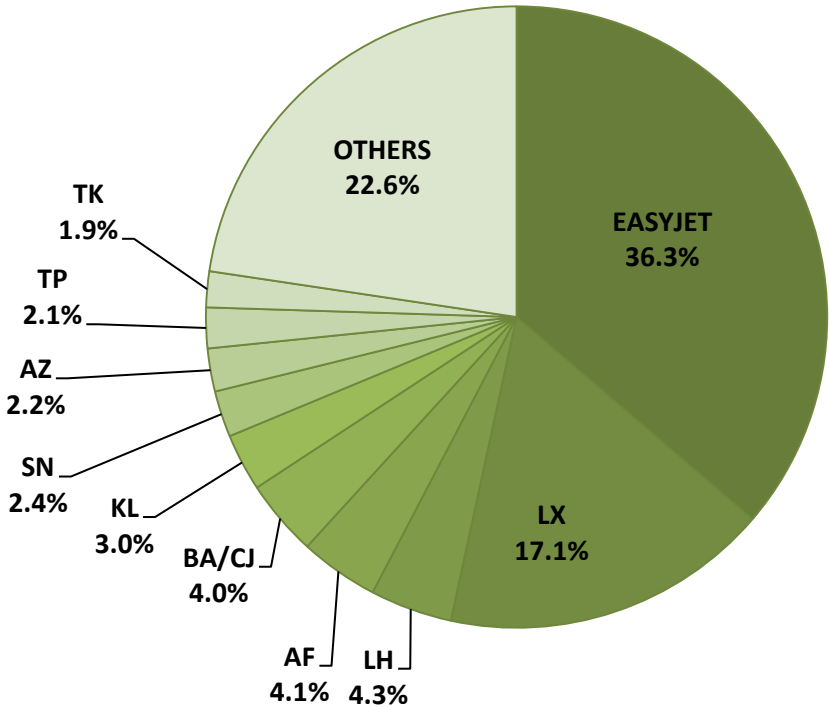


FRENCH SECTOR TERMINAL START OF SEASON - DEPARTURES

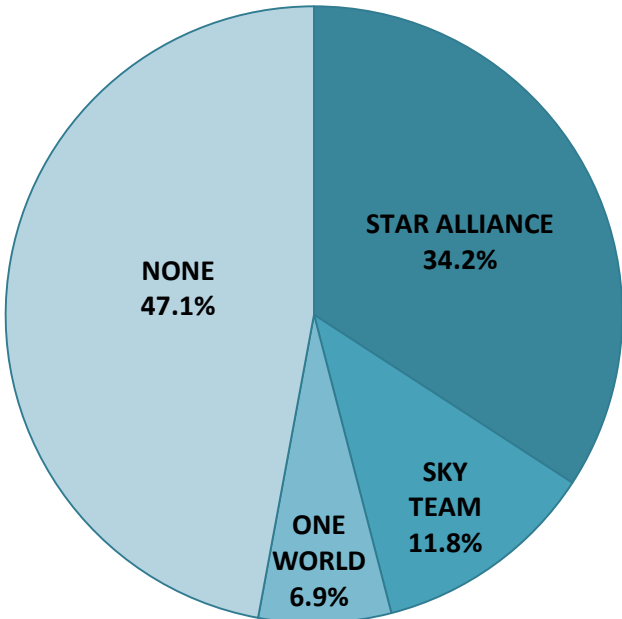
Reference week, movements per hour - all times UTC



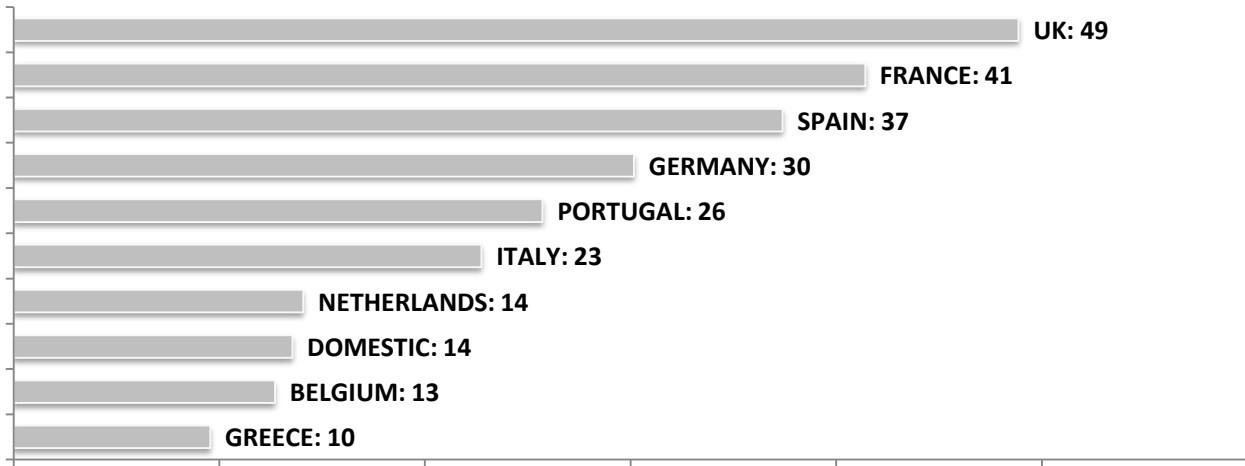
SEASONAL SLOT SHARE - 10 TOP CARRIER



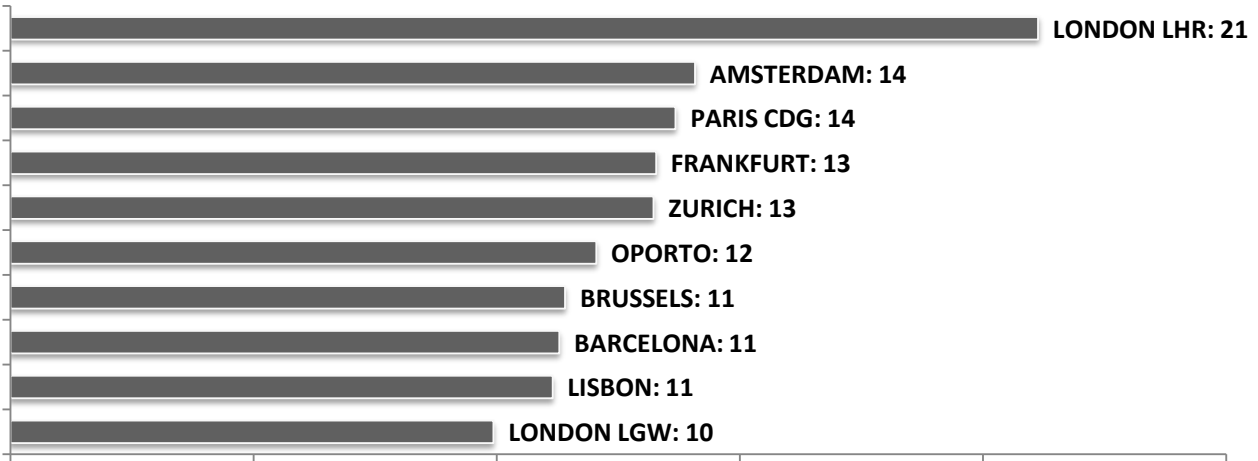
SEASONAL SLOT SHARE - PER ALLIANCES



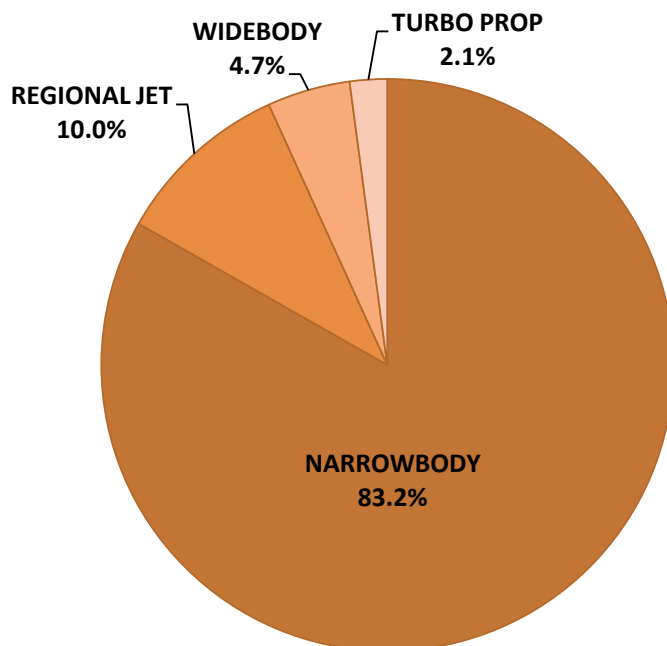
TOP 10 COUNTRIES - Number of Daily Slots



TOP 10 ROUTES - Number of Daily Slots



AIRCRAFT UTILISATION



Aircraft Sizes

- Widebody e.g. A330, B767, B777
- Narrowbody e.g. A32S, B737, BCS
- Regional Jet e.g. ARJ, CRJ, ERJ
- Turbo Prop e.g. ATR, DH4, S20