

START OF SEASON REPORT ZURICH WINTER SEASON

25 OCTOBER 2020 - 27 MARCH 2021 (W20)

2020

| KEY FIGURES | W19 | W20 | +/- |
|------------------------|--------|--------|--------|
| Cleared Airport Slots | 90,995 | 42,492 | -53.3% |
| Seats offered (1000) | 16,070 | 7,448 | -53.7% |
| Seats per Airport Slot | 177 | 175 | -0.7% |
| Runway Utilisation | 56.0% | 26.0% | -29.9% |
| Number of Carriers | 56 | 47 | -9 |

due to Corona COVID-19 disease a total of 57'608 slots were cancelled!

TABLE OF CONTENTS

| | |
|-------------------------------------|-----|
| Overview Main Carriers | 2 |
| Runway Histograms | 3,4 |
| Slot Shares | 5 |
| Traffic Flows, Aircraft Utilisation | 6 |

Page



GLOSSARY OF TERMS

| | |
|------------------------|--|
| Allocation | The allocation of slots within declared capacity limits. |
| Capacity Limits | Limiting parameters declared by the Airport Operator used in the coordination process. |
| Seats | The number of seats based on the aircraft configuration advised by the airline. |

GUIDE TO HISTOGRAMS

The histograms show the pattern of traffic by time of day against the appropriate capacity limit. Each time period consists of seven columns representing the days-of-week, Monday through Sunday. All histograms are based on a reference week. For Winter 2020 the reference week is 15-21 February 2021.

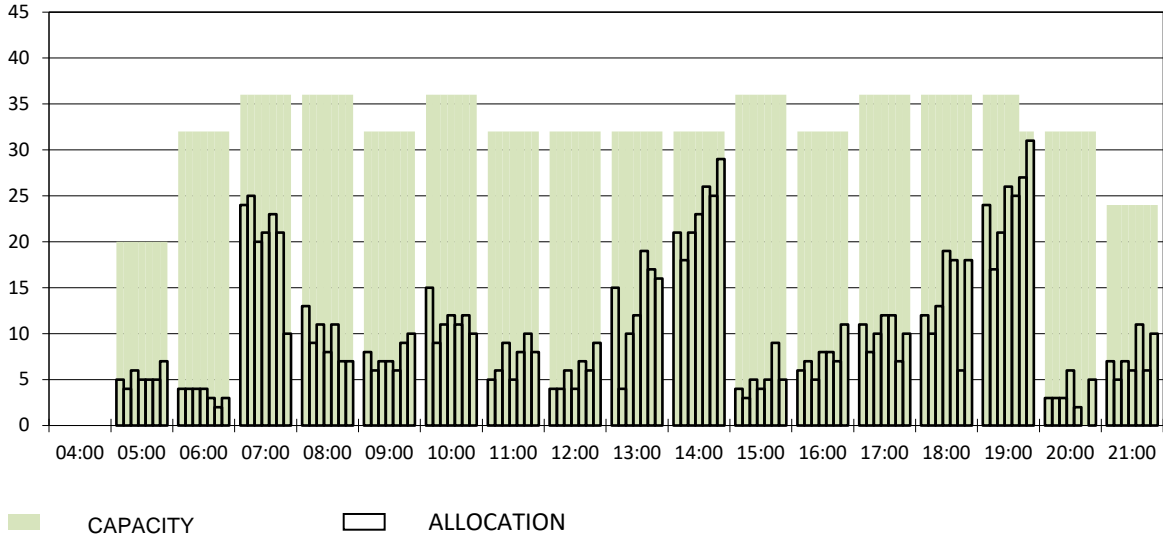
OVERVIEW MAIN CARRIERS

Number of average slots per week

| | START OF SEASON | | | | SLOT RETURN | | | |
|-------------------------------|-----------------|------|--------|-------|-------------|------|-------|-------|
| | W19 | W20 | +/- | Share | W19 | W20 | +/- | Share |
| ALL CARRIERS | 4136 | 1931 | -53.3% | | 4271 | 4375 | 2.4% | |
| Swiss Carriers | 2594 | 1020 | -60.7% | 52.8% | 2668 | 2752 | 3.1% | 62.9% |
| <i>where of</i> | | | | | | | | |
| Swiss International Air Lines | 2318 | 841 | -63.7% | 43.6% | 2385 | 2449 | 2.7% | 56.0% |
| Edelweiss Air | 215 | 126 | -41.4% | 6.5% | 224 | 250 | 11.6% | 5.7% |
| Chair Airlines | 58 | 43 | -25.9% | 2.2% | 58 | 53 | -8.6% | 1.2% |
| Helvetic | 3 | 10 | 233.3% | 0.5% | 1 | 0 | | 0.0% |
| Foreign Carriers | 1542 | 911 | -40.9% | 47.2% | 1603 | 1623 | 1.2% | 37.1% |
| <i>where of</i> | | | | | | | | |
| British Airways/BA CityFlyer | 127 | 82 | -35.4% | 4.2% | 127 | 143 | 12.6% | 3.3% |
| KLM | 82 | 67 | -18.3% | 3.5% | 82 | 82 | 0.0% | 1.9% |
| Lufthansa | 136 | 66 | -51.5% | 3.4% | 136 | 140 | 2.9% | 3.2% |
| Eurowings | 141 | 56 | -60.3% | 2.9% | 141 | 148 | 5.0% | 3.4% |
| TAP Air Portugal | 67 | 56 | -16.4% | 2.9% | 73 | 70 | -4.1% | 1.6% |
| Turkish Airlines | 48 | 44 | -8.3% | 2.3% | 48 | 48 | 0.0% | 1.1% |
| SAS Scandinavian Airlines | 60 | 42 | -30.0% | 2.2% | 60 | 69 | 15.0% | 1.6% |
| Austrian Airlines | 75 | 35 | -53.3% | 1.8% | 76 | 90 | 18.4% | 2.1% |
| Air France | 53 | 31 | -41.5% | 1.6% | 54 | 56 | 3.7% | 1.3% |
| Easyjet | 105 | 26 | -75.2% | 1.3% | 107 | 116 | 8.4% | 2.7% |
| Maj. foreign Carriers | 894 | 505 | -43.5% | 26.2% | 904 | 962 | 6.4% | 22.0% |

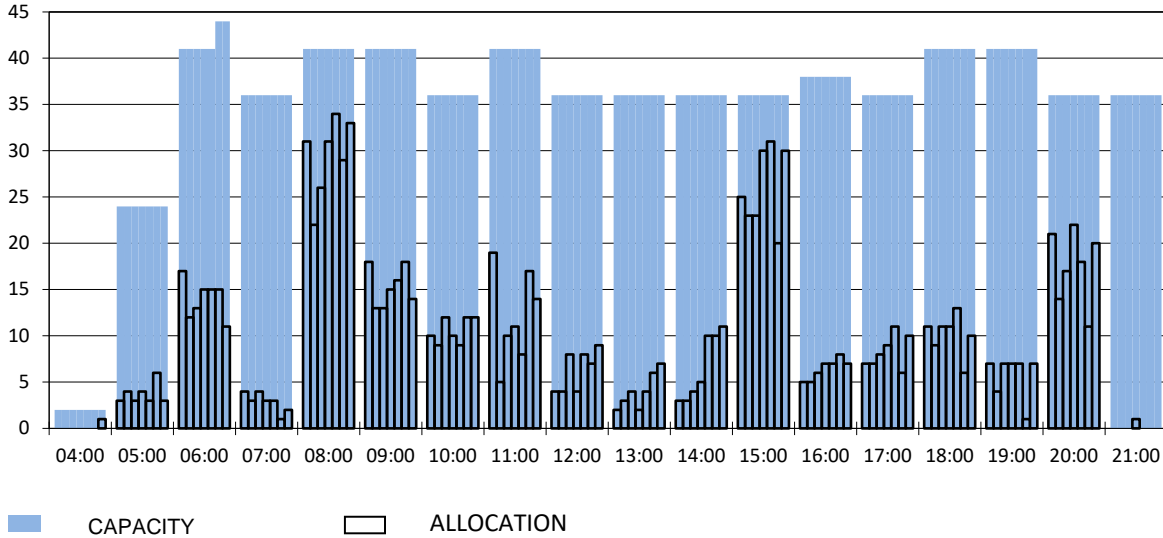
RUNWAY MOVEMENT START OF SEASON - ARRIVALS

Reference week, movements per hour - all times UTC



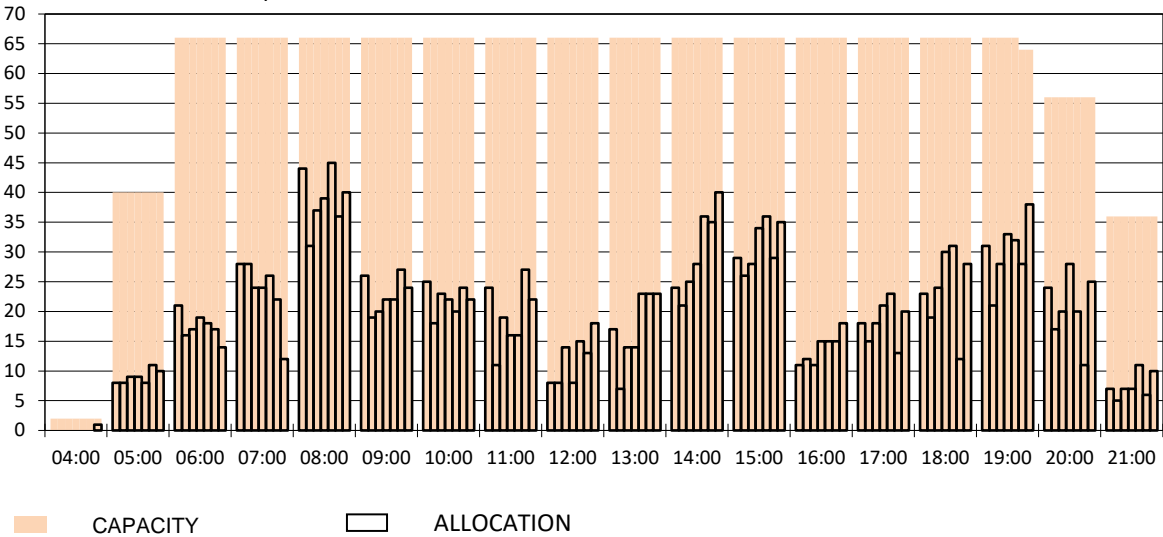
RUNWAY MOVEMENT START OF SEASON - DEPARTURES

Reference week, movements per hour - all times UTC



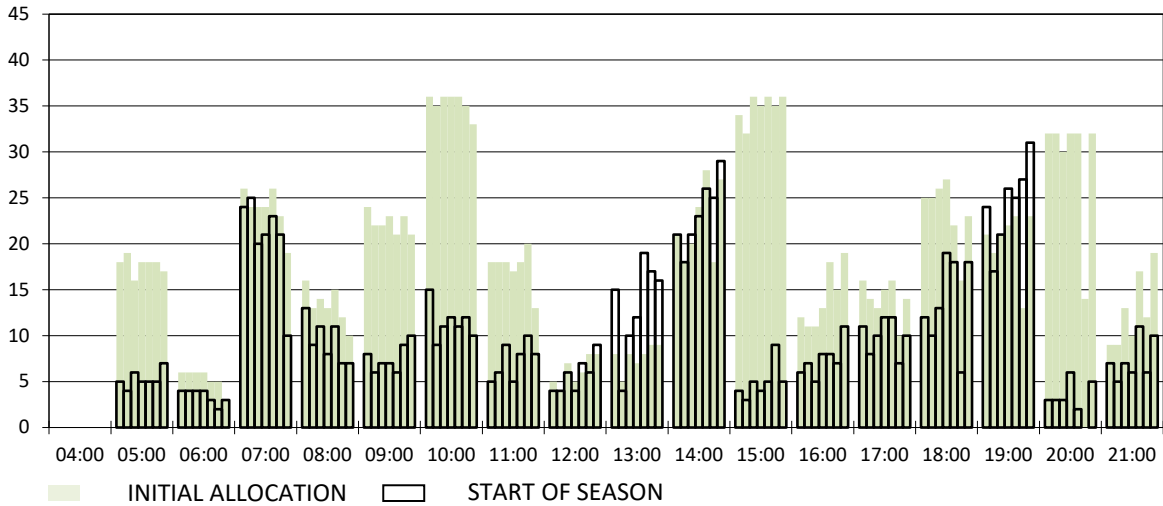
RUNWAY MOVEMENT START OF SEASON - TOTALS

Reference week, movements per hour - all times UTC



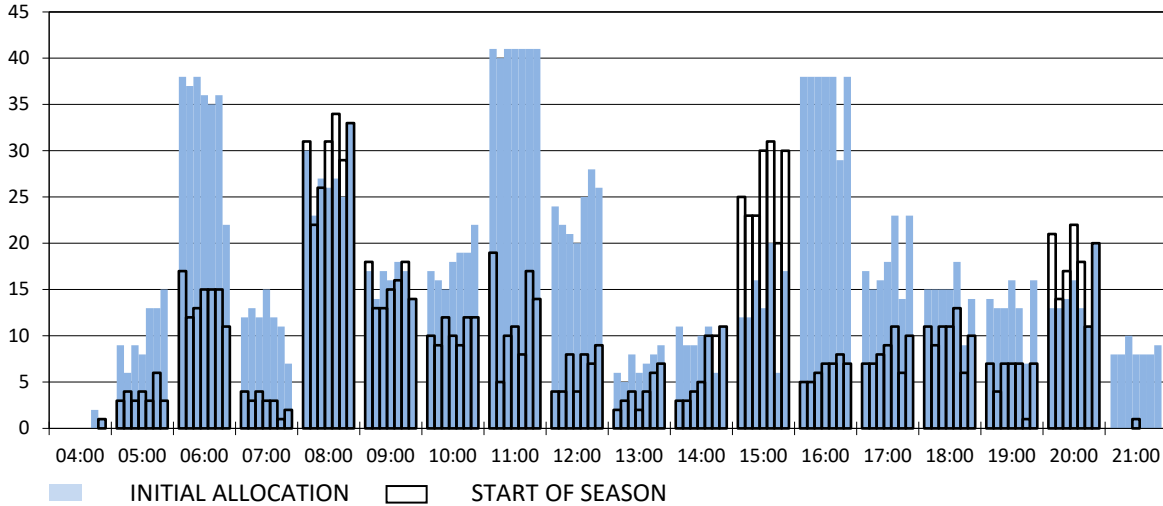
RUNWAY MOVEMENT DEVELOPMENT INITIAL ALLOCATION TO START OF SEASON - ARRIVALS

Reference week, movements per hour - all times UTC



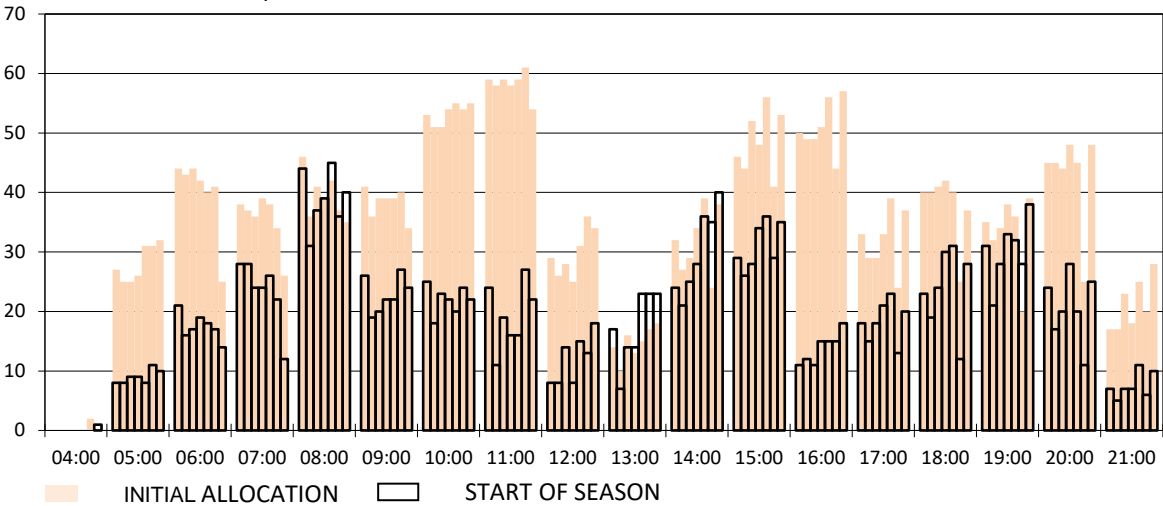
RUNWAY MOVEMENT DEVELOPMENT INITIAL ALLOCATION TO START OF SEASON - DEPARTURES

Reference week, movements per hour - all times UTC

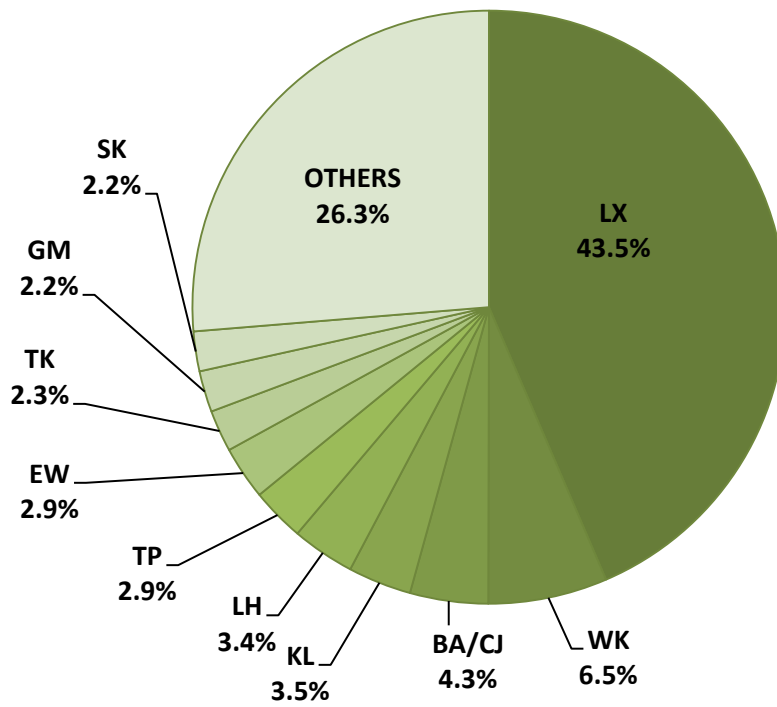


RUNWAY MOVEMENT DEVELOPMENT INITIAL ALLOCATION TO START OF SEASON - TOTALS

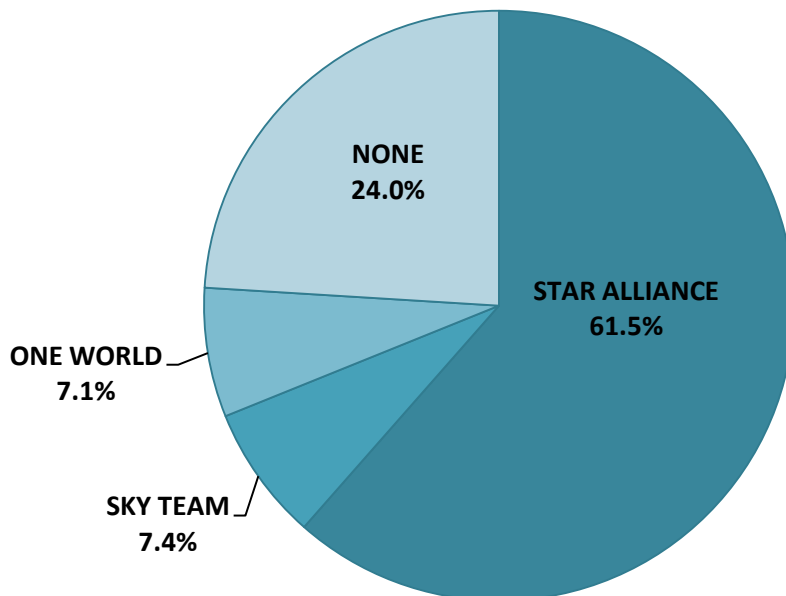
Reference week, movements per hour - all times UTC



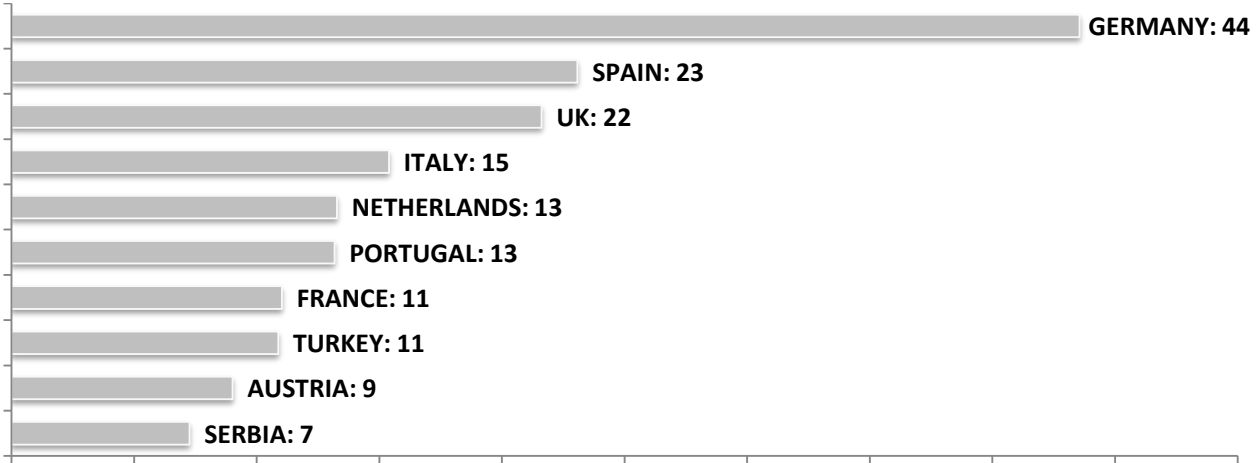
SEASONAL SLOT SHARE - 10 TOP CARRIER



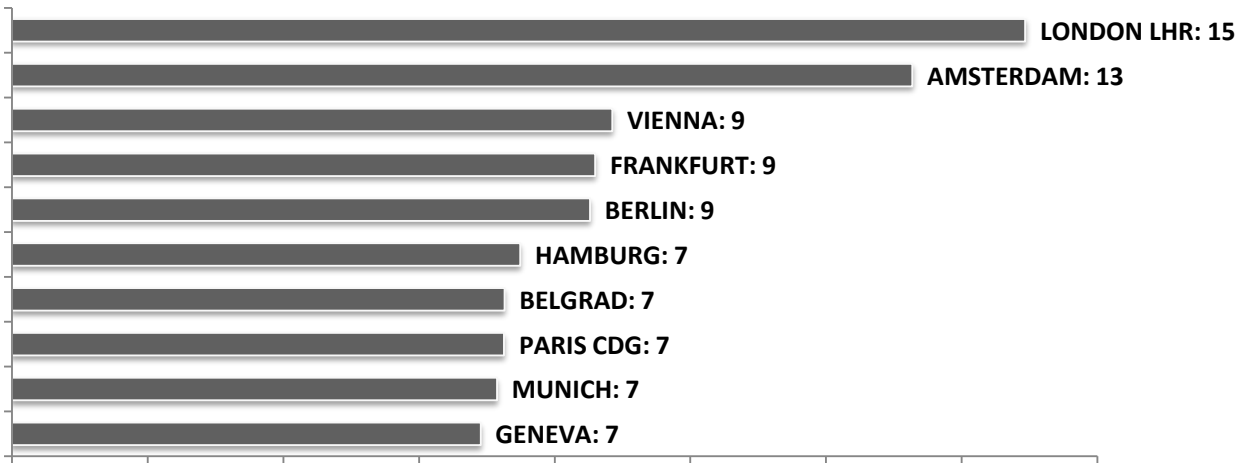
SEASONAL SLOT SHARE - PER ALLIANCES



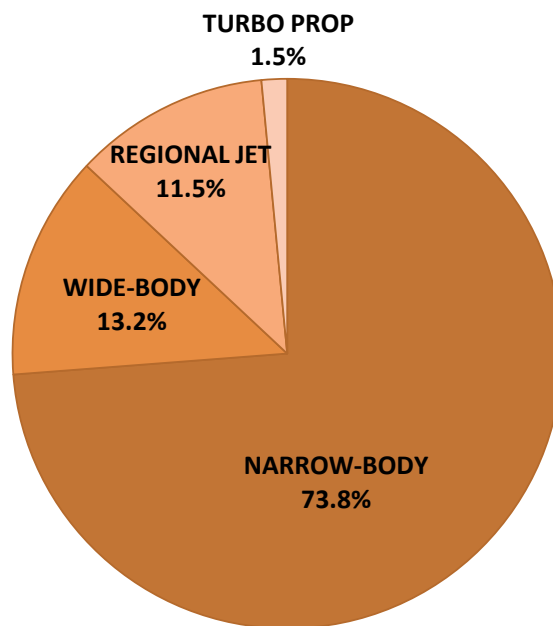
TOP 10 COUNTRIES - Number of Daily Slots



TOP 10 ROUTES - Number of Daily Slots



AIRCRAFT UTILISATION



Aircraft Sizes

- Widebody e.g. A330, B767, B777
- Narrowbody e.g. A220, A32S, B737
- Regional Jet e.g. ARJ, CRJ, EMJ
- Turbo Prop e.g. ATR, DH4, S20