

START OF SEASON REPORT GENEVA WINTER SEASON

25 OCTOBER 2020 - 27 MARCH 2021 (W20)

2020

KEY FIGURES	W19	W20	+/-
Cleared Airport Slots	61,865	35,572	-42.5%
Seats (1000)	10,979	5,695	-48.1%
Seats per Airport Slot	177	160	-9.5%
Runway Utilisation Days 1-5	67.1%	53.2%	-13.9%
Runway Utilisation Day 6	89.7%	69.9%	-19.8%
Runway Utilisation Day 7	84.3%	66.8%	-17.5%
Number of Carriers	65	60	-5

due to Corona COVID-19 disease a total of 31'050 slots were cancelled!

TABLE OF CONTENTS

Overview Main Carriers	2
Runway Histograms	3
Terminal Histograms	4
Slot Shares	5
Traffic Flows, Aircraft Utilisation	6

Page



GLOSSARY OF TERMS

Allocation	The allocation of slots within declared capacity limits.
Capacity Limits	Limiting parameters declared by the Airport Operator used in the coordination process.
Seats	The number of seats based on the aircraft configuration advised by the airline.

GUIDE TO HISTOGRAMS

The histograms show the pattern of traffic by time of day against the appropriate capacity limit. Each time period consists of seven columns representing the days-of-week, Monday through Sunday. All histograms are based on a reference week. For Winter 2020 the reference week is 15-21 February 2021.

OVERVIEW MAIN CARRIERS

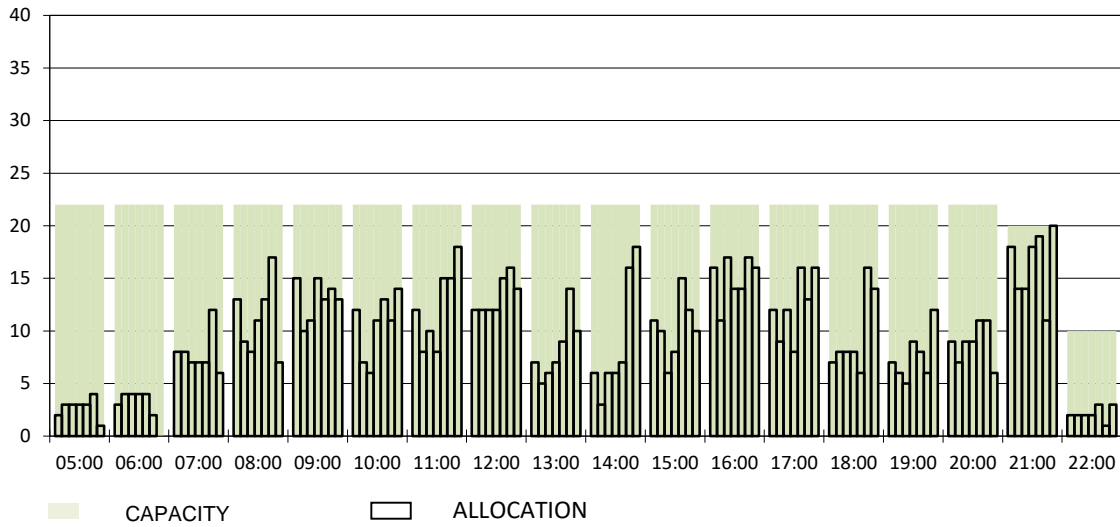
Number of average slots per week

	START OF SEASON			
	W19	W20	+/-	Share
ALL CARRIERS	2812	1617	-42.5%	
Swiss Carriers	987	553	-44.0%	34.2%
<i>where of</i>				
EasyJet Switzerland	520	363	-30.2%	22.4%
Swiss International Air Lines	465	187	-59.8%	11.6%
Chair	2	3	50.0%	0.2%
Foreign Carriers	1825	1064	-41.7%	65.8%
<i>where of</i>				
EasyJet Europe&UK	456	168	-63.2%	10.4%
British Airways / BA CityFlyer	190	154	-18.9%	9.5%
Air France	124	78	-37.1%	4.8%
KLM	83	65	-21.7%	4.0%
Lufthansa	40	54	35.0%	3.3%
TAP Air Portugal	67	53	-20.9%	3.3%
Alitalia	59	41	-30.5%	2.5%
Iberia	53	36	-32.1%	2.2%
Jet2	33	34	3.0%	2.1%
SAS	40	31	-22.5%	1.9%
Maj. foreign Carriers	1145	714	-37.6%	44.2%

	SLOT RETURN			
	W19	W20	+/-	Share
	2818	2999	6.4%	
	988	1032	4.5%	34.4%
	521	547	5.0%	18.2%
	465	481	3.4%	16.0%
	2	4	100.0%	0.1%
	1830	1967	7.5%	65.6%
	458	465	1.5%	15.5%
	190	206	8.4%	6.9%
	124	126	1.6%	4.2%
	83	83	0.0%	2.8%
	40	105	162.5%	3.5%
	70	66	-5.7%	2.2%
	60	60	0.0%	2.0%
	53	54	1.9%	1.8%
	33	34	3.0%	1.1%
	40	49	22.5%	1.6%
	1151	1248	8.4%	41.6%

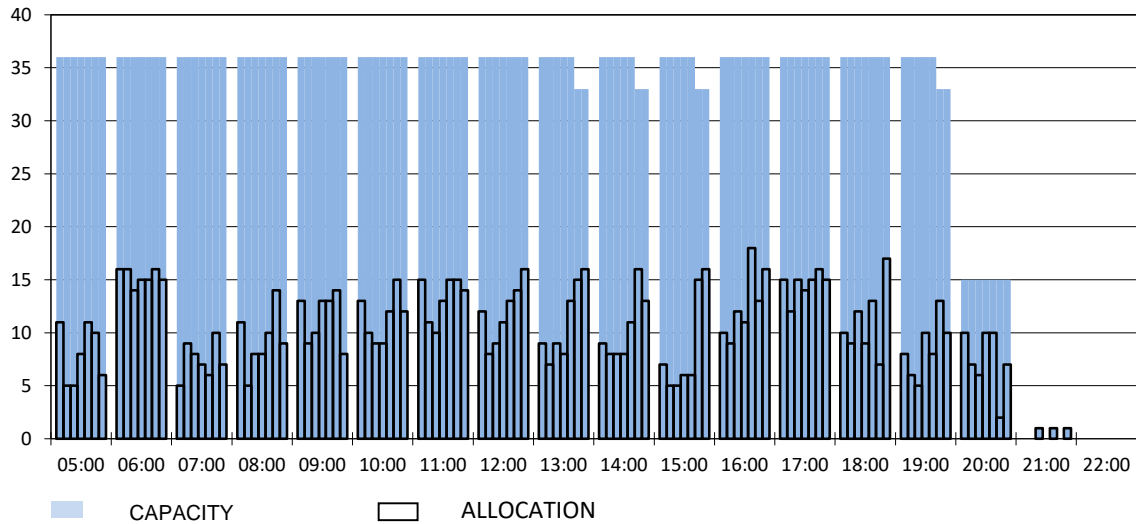
RUNWAY MOVEMENT START OF SEASON - ARRIVALS

Reference week, movements per hour - all times UTC



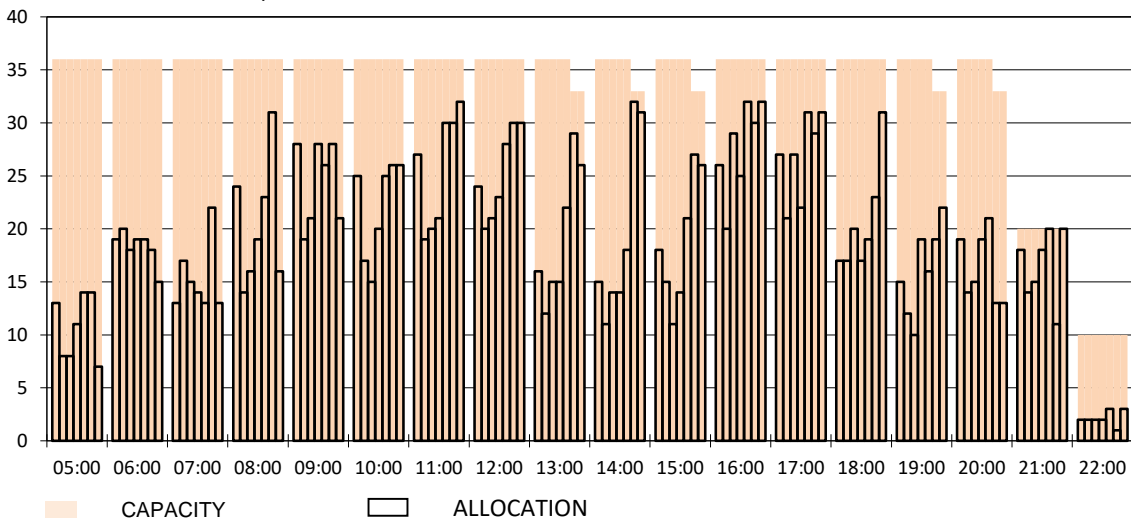
RUNWAY MOVEMENT START OF SEASON - DEPARTURES

Reference week, movements per hour - all times UTC



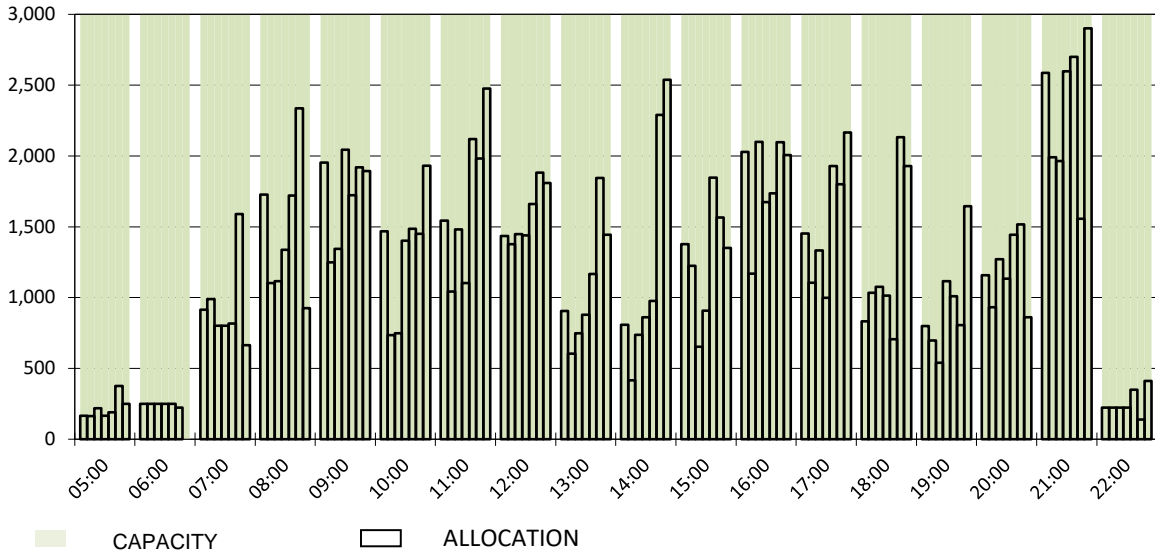
RUNWAY MOVEMENT START OF SEASON - TOTALS

Reference week, movements per hour - all times UTC



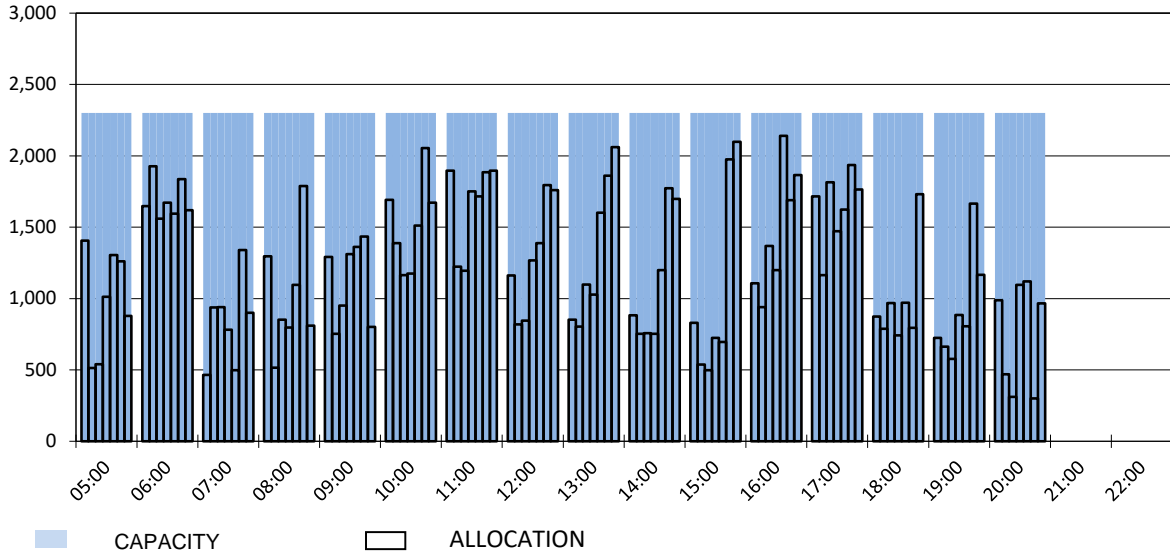
MAIN TERMINAL START OF SEASON - ARRIVALS

Reference week, movements per hour - all times UTC



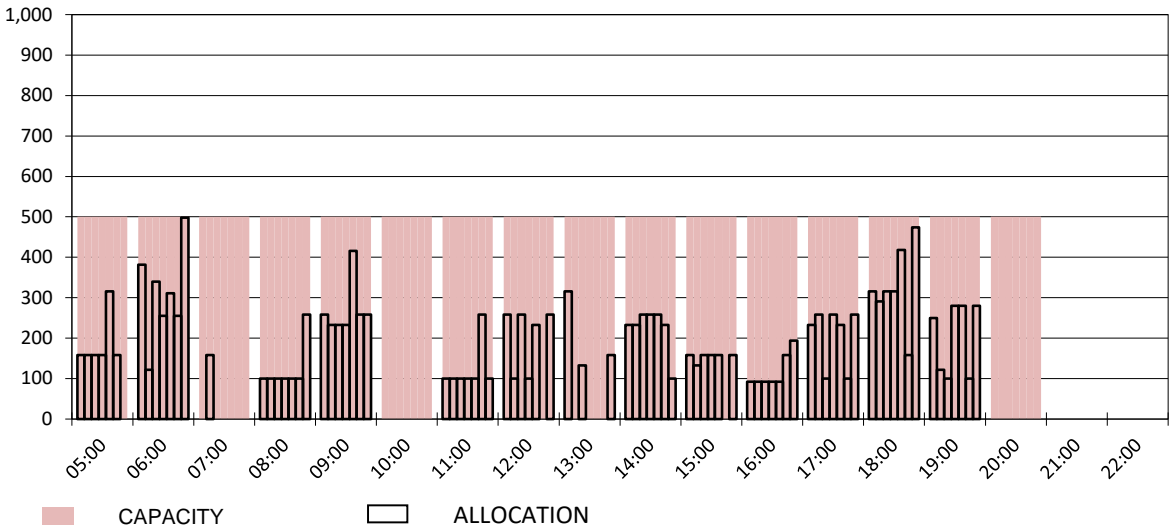
MAIN TERMINAL START OF SEASON - DEPARTURES

Reference week, movements per hour - all times UTC

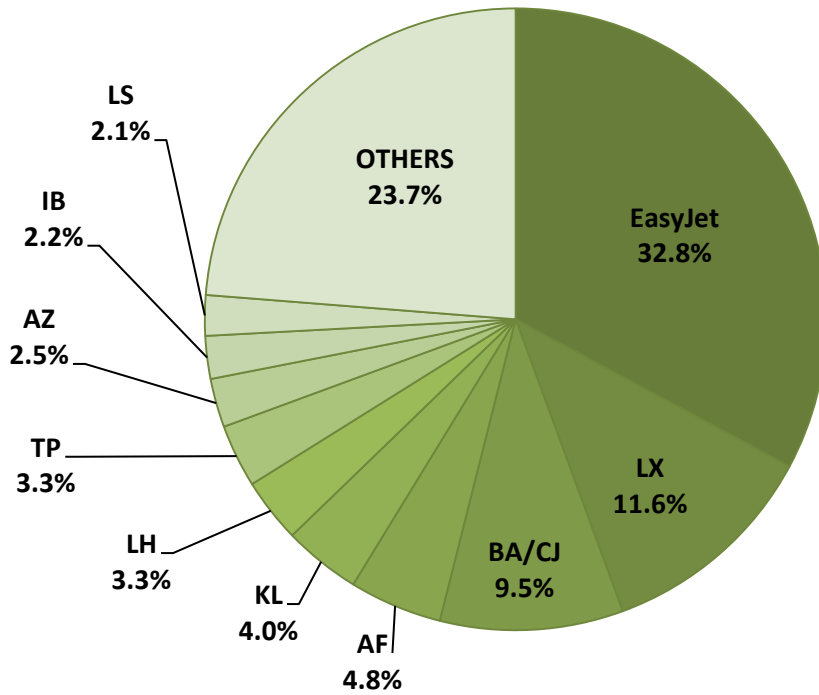


FRENCH SECTOR TERMINAL START OF SEASON - DEPARTURES

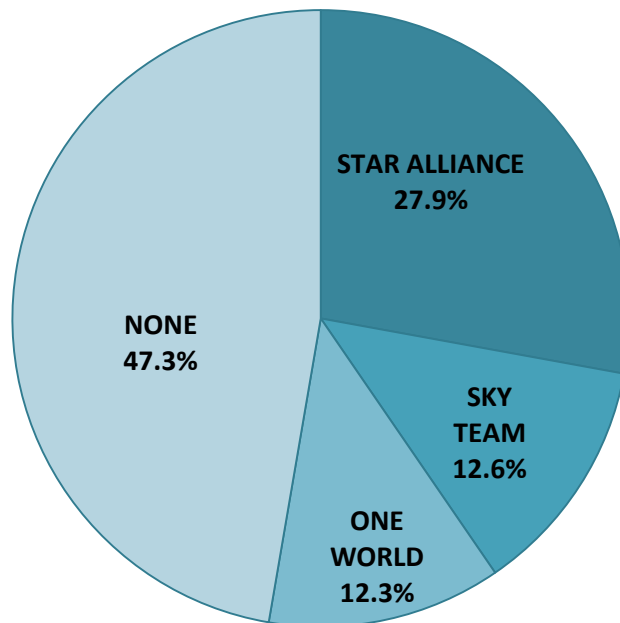
Reference week, movements per hour - all times UTC



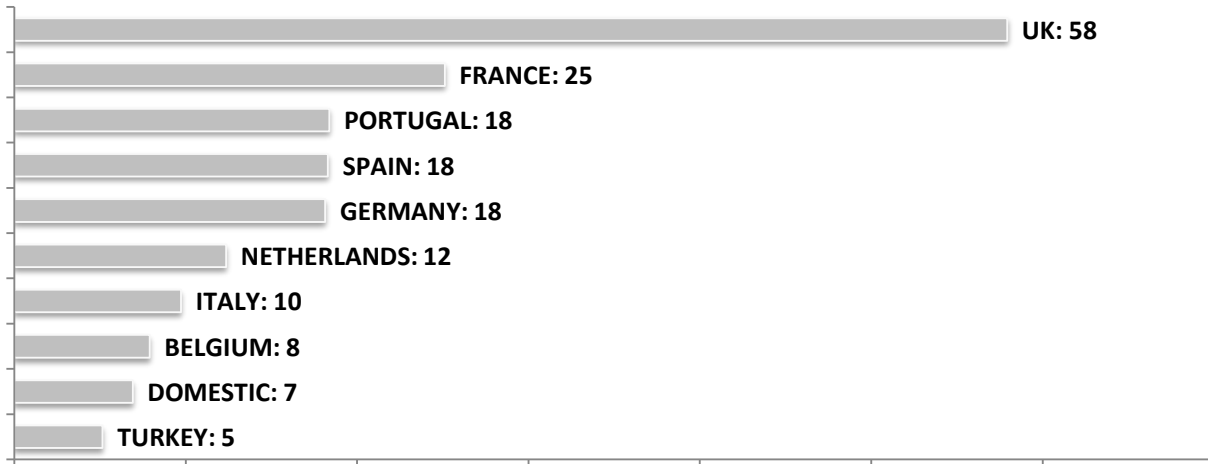
SEASONAL SLOT SHARE - 10 TOP CARRIER



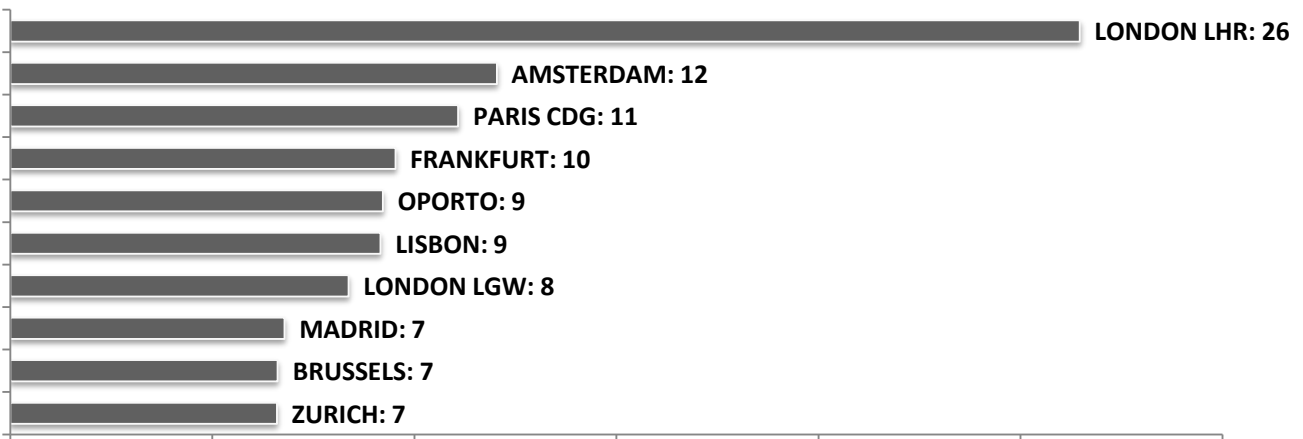
SEASONAL SLOT SHARE - PER ALLIANCES



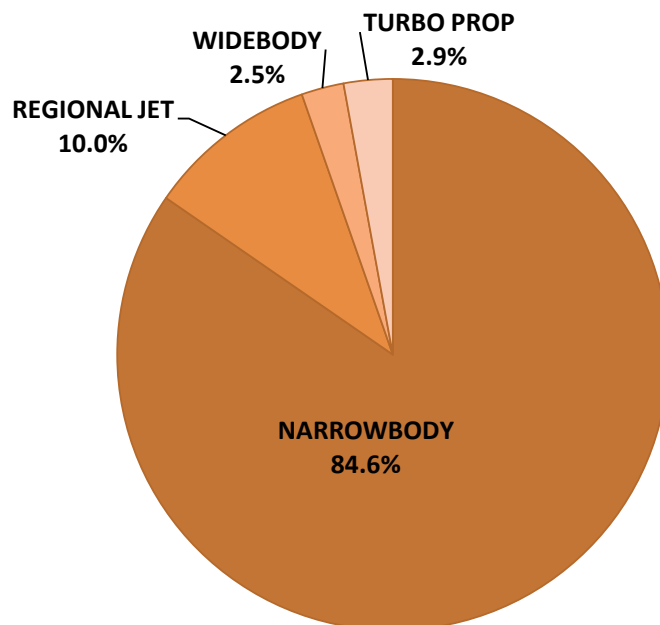
TOP 10 COUNTRIES - Number of Daily Slots



TOP 10 ROUTES - Number of Daily Slots



AIRCRAFT UTILISATION



Aircraft Sizes e.g. A330, A340, B777
 Widebody e.g. A220, A32S, B737
 Narrowbody e.g. ARJ, CRJ, ERJ
 Regional Jet e.g. ATR, DH4, S20