

START OF SEASON REPORT GENEVA SUMMER SEASON

28 MARCH - 30 OCTOBER 2021 (S21)

2021

KEY FIGURES	S20	S21	+/-
Airport Slots	74,785	48,878	-34.6%
Seats offered (1000)	11,766	8,043	-31.6%
Seats per Airport Slot	163	165	1.0%
Runway Utilisation	56.9%	37.2%	-19.7%
Number of Carriers	59	48	-11

Note: For comparison reasons S20 figures (30 season weeks) are transposed to reflect S21's 31 season weeks!

TABLE OF CONTENTS

	Page
Overview Main Carriers	2
Runway Histograms	3
Terminal Histograms	4
Slot Shares	5
Traffic Flows, Aircraft Utilisation	6



GLOSSARY OF TERMS

Allocation	The allocation of slots within declared capacity limits.
Capacity Limits	Limiting parameters declared by the Airport Operator used in the coordination process.
Seats	The number of seats based on the aircraft configuration advised by the airline.

GUIDE TO HISTOGRAMS

The histograms show the pattern of traffic by time of day against the appropriate capacity limit. Each time period consists of seven columns representing the days-of-week, Monday through Sunday. All histograms are based on a reference week.

For Summer 2021 the reference week is 13-19 September 2021.

OVERVIEW MAIN CARRIERS

Number of average slots per week

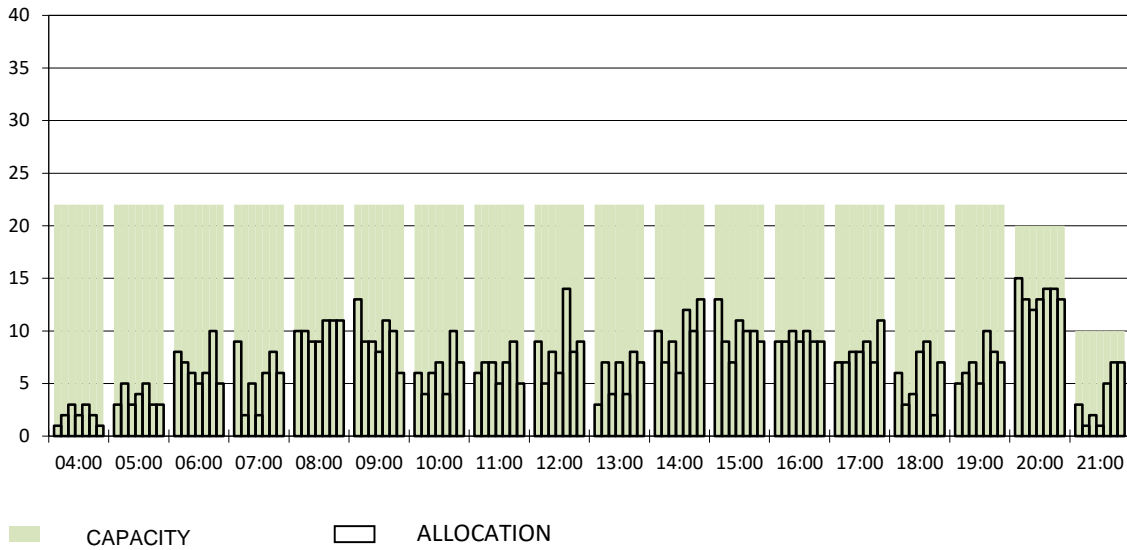
	START OF SEASON			
	S20	S21	+/-	Share
ALL CARRIERS	2412	1577	-34.6%	
Swiss Carriers	969	716	-26.1%	45.4%
<i>where of</i>				
EasyJet Switzerland	552	458	-17.0%	29.0%
Swiss International Air Lines	413	256	-38.0%	16.2%
Germania Flug AG	4	2	-50.0%	0.1%
Foreign Carriers	1443	861	-40.3%	54.6%
<i>where of</i>				
EasyJet Europe & UK	323	194	-39.9%	12.3%
Air France	99	75	-24.2%	4.8%
Lufthansa	103	55	-46.6%	3.5%
British Airways / BA Cityflyer	96	48	-50.0%	3.0%
TAP Air Portugal	51	41	-19.6%	2.6%
KLM	72	39	-45.8%	2.5%
Turkish Airlines	45	38	-15.6%	2.4%
Brussels Airlines	58	35	-39.7%	2.2%
Alitalia	54	34	-37.0%	2.2%
Iberia	44	31	-29.5%	2.0%
Maj. foreign Carriers	945	590	-37.6%	37.4%

SLOT RETURN			
S20	S21*	+/-	Share
2931	1816	-38.0%	
1142	845	-26.0%	46.5%
654	553	-15.4%	30.5%
486	290	-40.3%	16.0%
2	2	0.0%	0.1%
1789	971	-45.7%	53.5%
403	240	-40.4%	13.2%
119	84	-29.4%	4.6%
123	66	-46.3%	3.6%
123	62	-49.6%	3.4%
68	46	-32.4%	2.5%
84	42	-50.0%	2.3%
53	42	-20.8%	2.3%
75	40	-46.7%	2.2%
62	38	-38.7%	2.1%
52	32	-38.5%	1.8%
1162	692	-40.4%	38.1%

*comparison with EU Return Date 27 February 2021 (Complete Series Return)

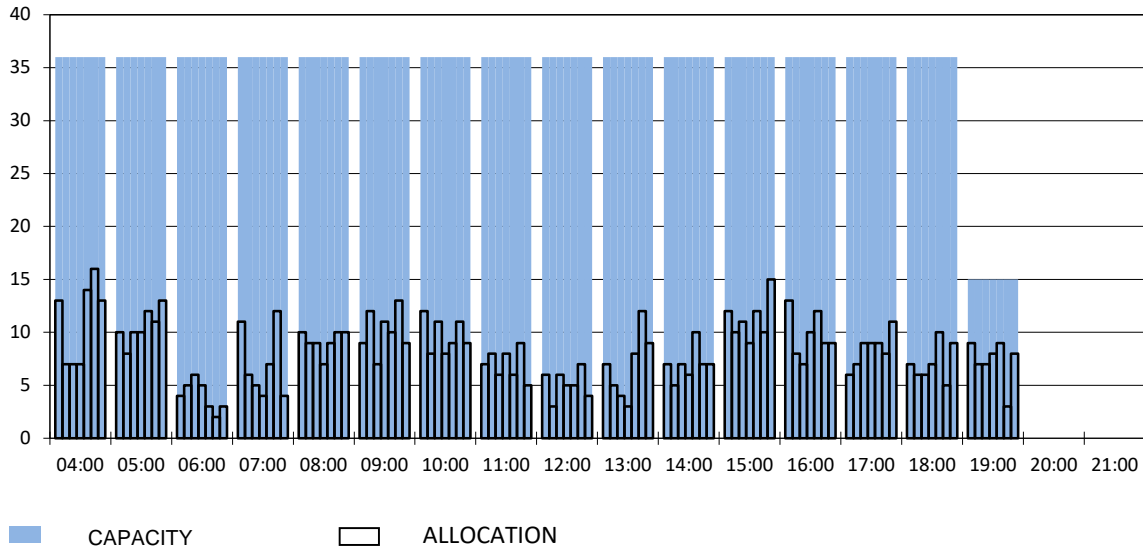
RUNWAY START OF SEASON - ARRIVALS

Reference week, movements per hour - all times UTC



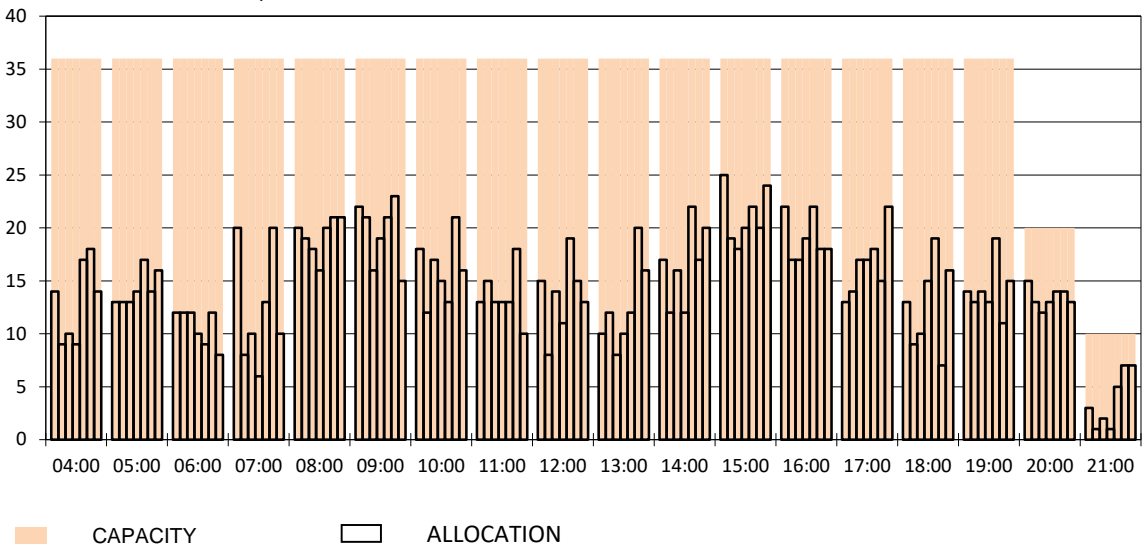
RUNWAY MOVEMENT START OF SEASON - DEPARTURES

Reference week, movements per hour - all times UTC



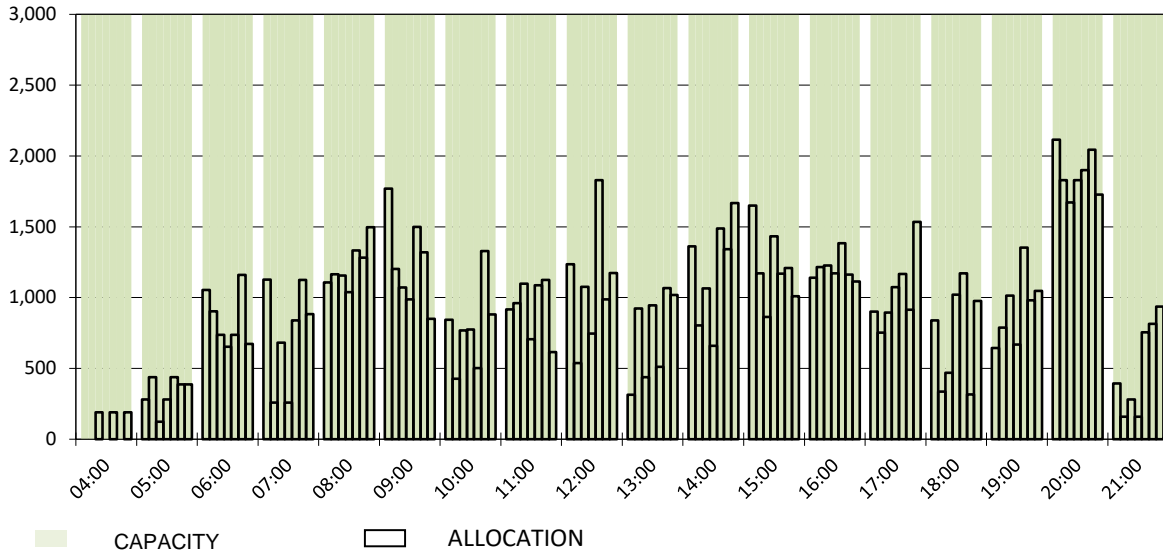
RUNWAY MOVEMENT START OF SEASON - TOTALS

Reference week, movements per hour - all times UTC



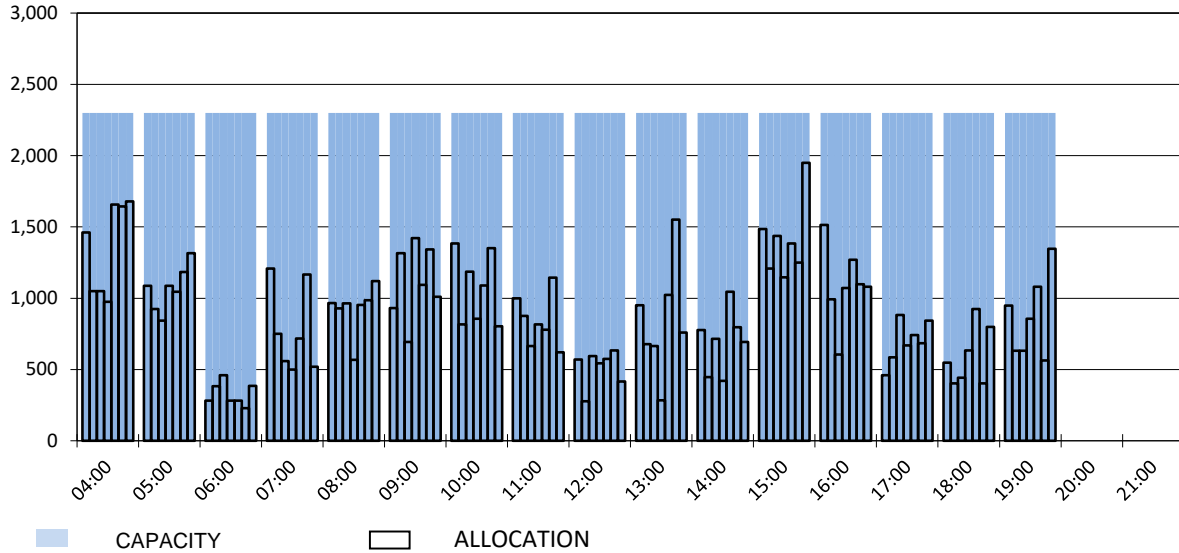
MAIN TERMINAL START OF SEASON - ARRIVALS

Reference week, passengers per hour - all times UTC



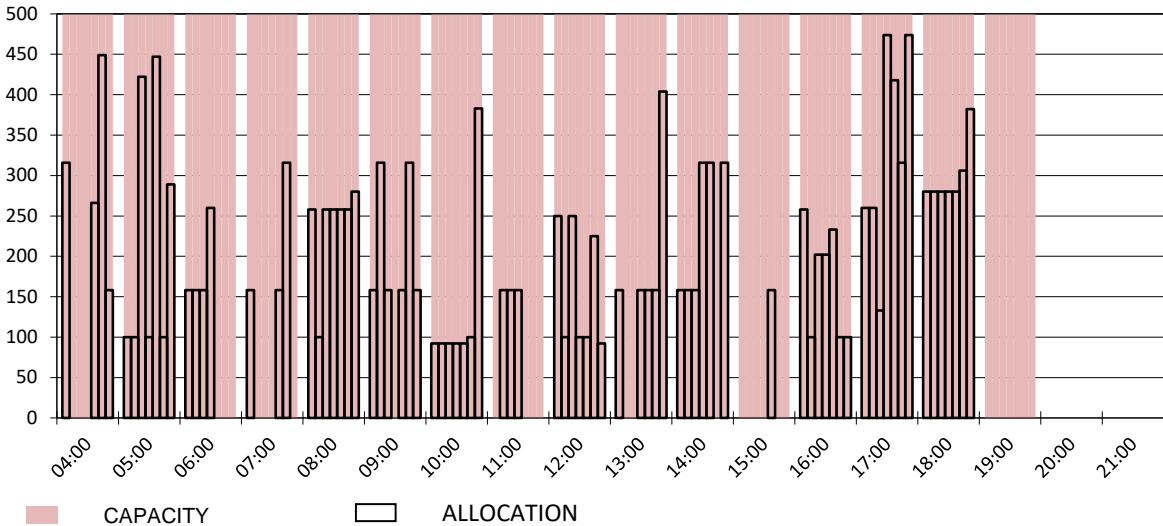
MAIN TERMINAL START OF SEASON - DEPARTURES

Reference week, passengers per hour - all times UTC

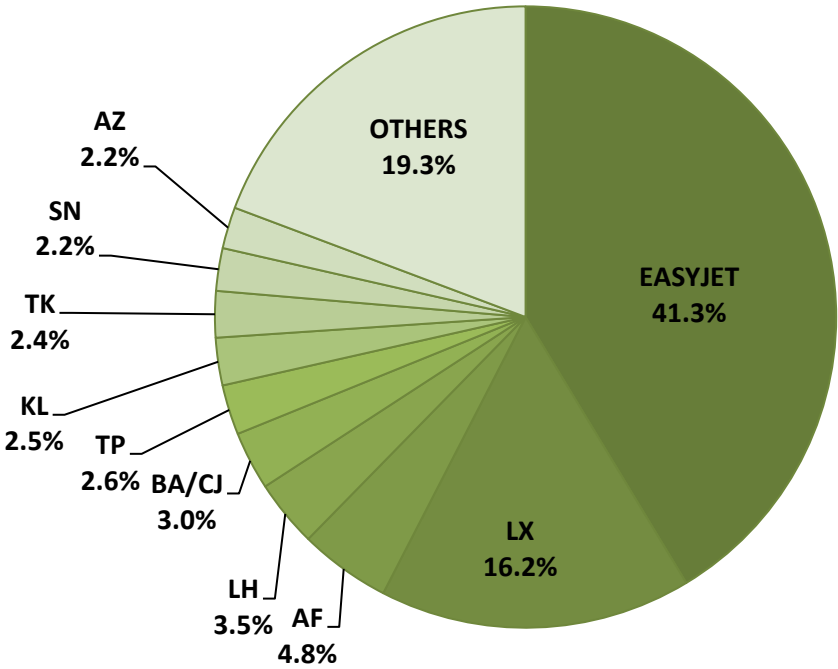


FRENCH SECTOR TERMINAL START OF SEASON - DEPARTURES

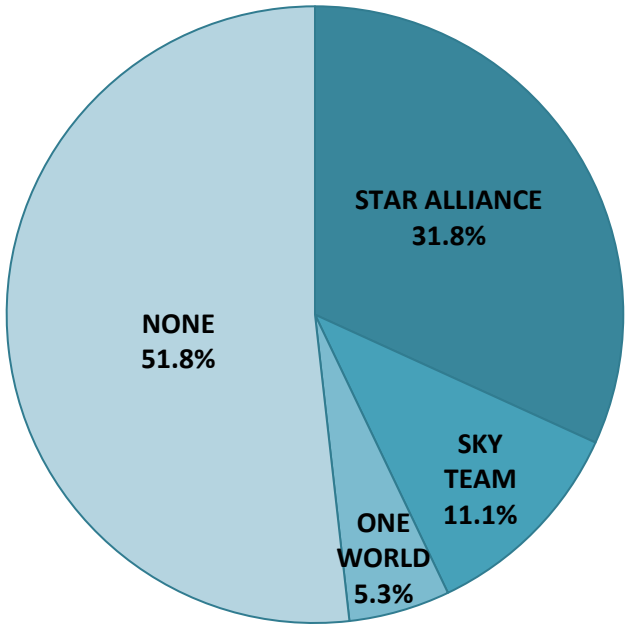
Reference week, passengers per hour - all times UTC



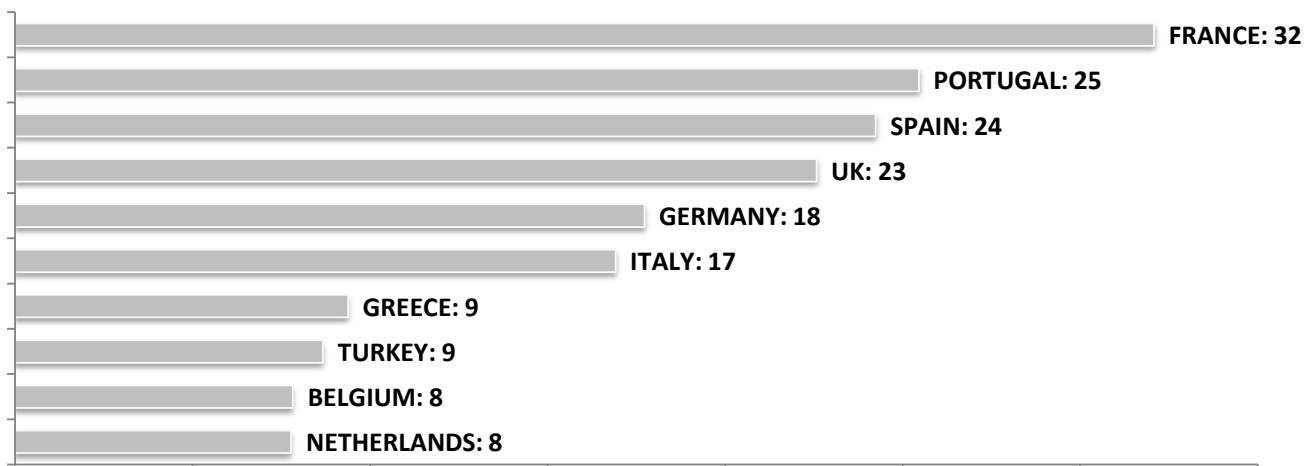
SEASONAL SLOT SHARE - 10 TOP CARRIER



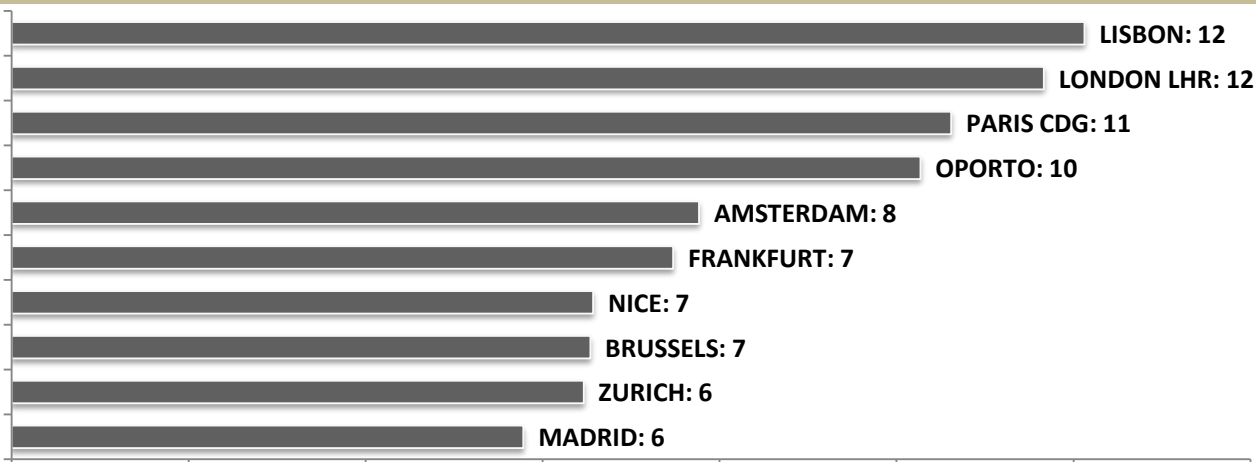
SEASONAL SLOT SHARE - PER ALLIANCES



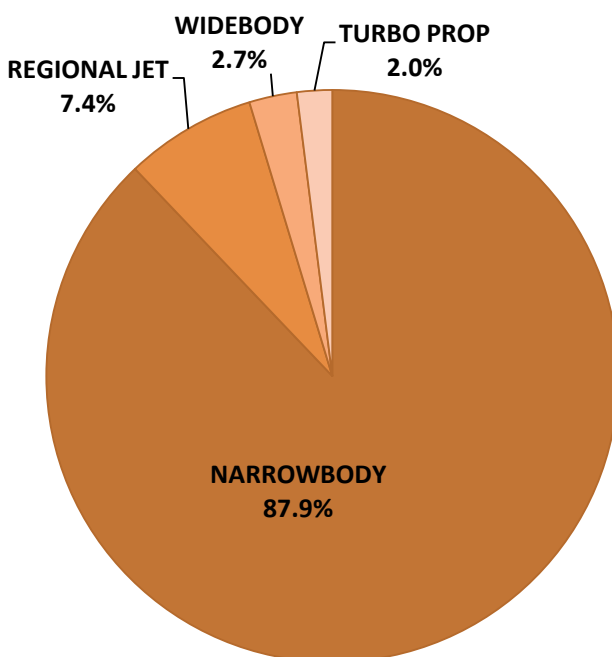
TOP 10 COUNTRIES - Number of Daily Slots



TOP 10 ROUTES - Number of Daily Slots



AIRCRAFT UTILISATION



Aircraft Sizes

- Widebody e.g. A330, B767, B777
- Narrowbody e.g. A32S, B737, BCS
- Regional Jet e.g. CRJ, ERJ
- Turbo Prop e.g. ATR, DH4