

START OF SEASON REPORT ZURICH SUMMER SEASON

28 MARCH - 30 OCTOBER 2021 (S21)

2021

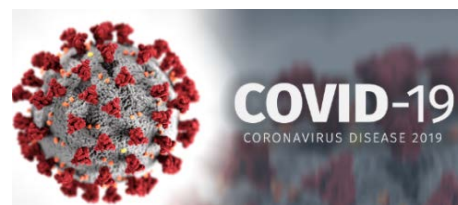
KEY FIGURES	S20	S21	+/-
Cleared Airport Slots	126,858	83,950	-33.8%
Seats offered (1000)	22,396	14,939	-33.3%
Seats per Airport Slot	177	178	0.8%
Runway Utilisation	55.2%	36.5%	-18.7%
Number of Carriers	64	54	-10

Note: For comparison reasons S20 figures (30 season weeks) are transposed to reflect S21's 31 season weeks!

TABLE OF CONTENTS

Overview Main Carriers	2
Runway Histograms	3,4
Slot Shares	5
Traffic Flows, Aircraft Utilisation	6

Page



GLOSSARY OF TERMS

Allocation	The allocation of slots within declared capacity limits.
Capacity Limits	Limiting parameters declared by the Airport Operator used in the coordination process.
Seats	The number of seats based on the aircraft configuration advised by the airline.

GUIDE TO HISTOGRAMS

The histograms show the pattern of traffic by time of day against the appropriate capacity limit. Each time period consists of seven columns representing the days-of-week, Monday through Sunday. All histograms are based on a reference week. For Summer 2021 the reference week is 13 -19 September 2021.

OVERVIEW MAIN CARRIERS

Number of average slots per week

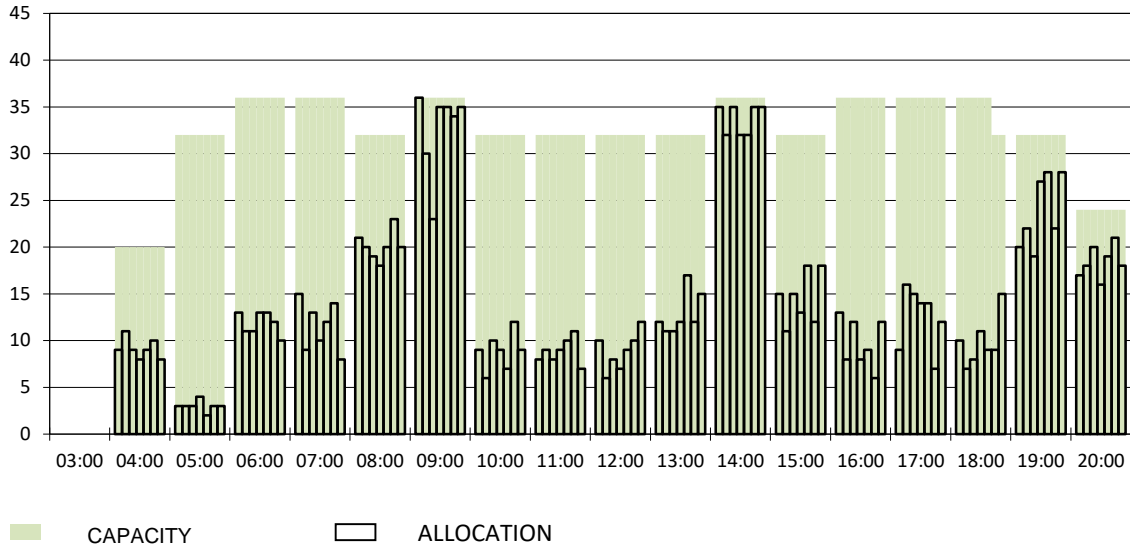
	START OF SEASON			
	S20	S21	+/-	Share
ALL CARRIERS	4092	2708	-33.8%	
Swiss Carriers	2634	1752	-33.5%	64.7%
<i>where of</i>				
Swiss International Air Lines	2215	1290	-41.8%	47.6%
Edelweiss Air	335	341	1.8%	12.6%
Chair Airlines	71	105	47.9%	3.9%
Helvetic	13	16	23.1%	0.6%
Foreign Carriers	1458	956	-34.4%	35.3%
<i>where of</i>				
Eurowings	105	68	-35.2%	2.5%
Turkish Airlines	55	61	10.9%	2.3%
Lufthansa	121	57	-52.9%	2.1%
British Airways/BA CityFlyer	85	48	-43.5%	1.8%
Austrian Airlines	73	47	-35.6%	1.7%
Condor	0	46		1.7%
Easyjet	90	41	-54.4%	1.5%
Sun Express	42	41	-2.4%	1.5%
KLM	70	40	-42.9%	1.5%
TAP Air Portugal	54	30	-44.4%	1.1%
Maj. foreign Carriers	695	479	-31.1%	17.7%

SLOT RETURN			
S20	S21*	+/-	Share
4998	2272	-54.5%	
3195	1193	-62.7%	52.5%
2692	849	-68.5%	37.4%
389	222	-42.9%	9.8%
109	108	-0.9%	4.8%
5	14	180.0%	0.6%
1803	1079	-40.2%	47.5%
146	82	-43.8%	3.6%
64	50	-21.9%	2.2%
138	76	-44.9%	3.3%
119	62	-47.9%	2.7%
88	52	-40.9%	2.3%
0	46		2.0%
108	64	-40.7%	2.8%
48	43	-10.4%	1.9%
82	42	-48.8%	1.8%
68	36	-47.1%	1.6%
861	553	-35.8%	24.3%

*comparison with EU Return Date 27 February 2021 (Complete Series Return)

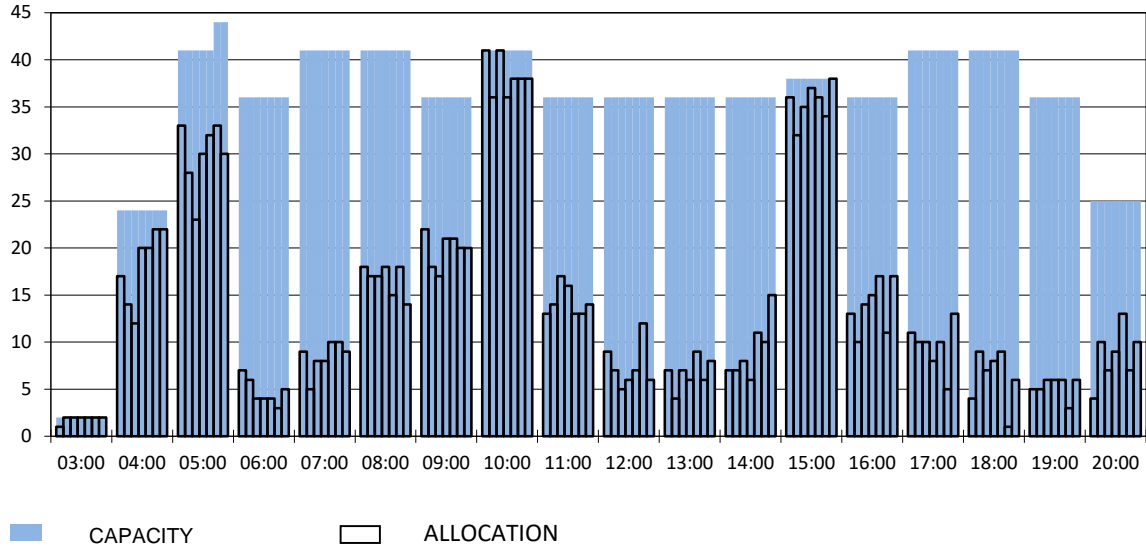
RUNWAY MOVEMENT START OF SEASON - ARRIVALS

Reference week, movements per hour - all times UTC



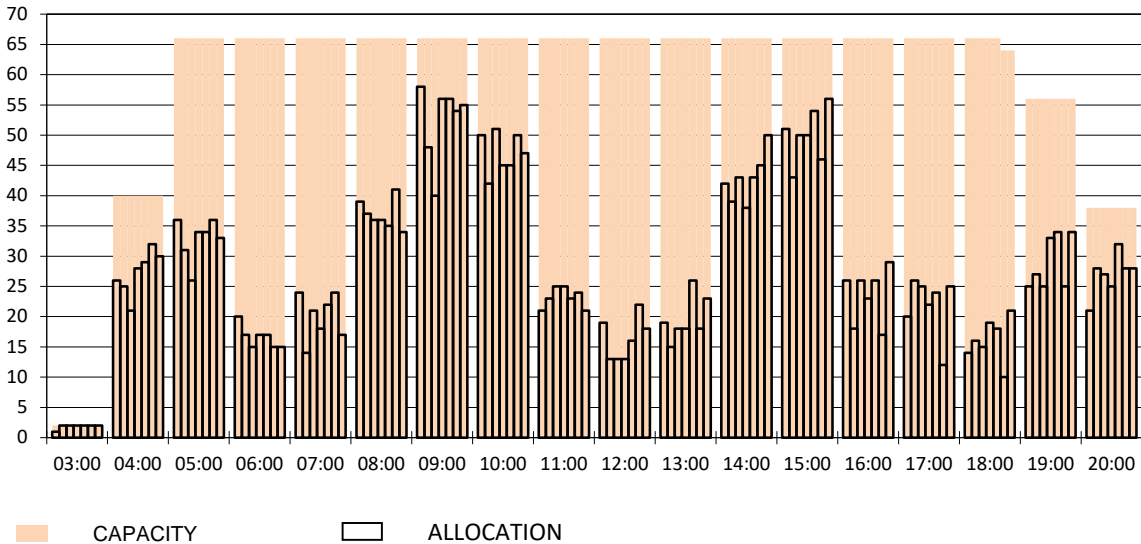
RUNWAY MOVEMENT START OF SEASON - DEPARTURES

Reference week, movements per hour - all times UTC



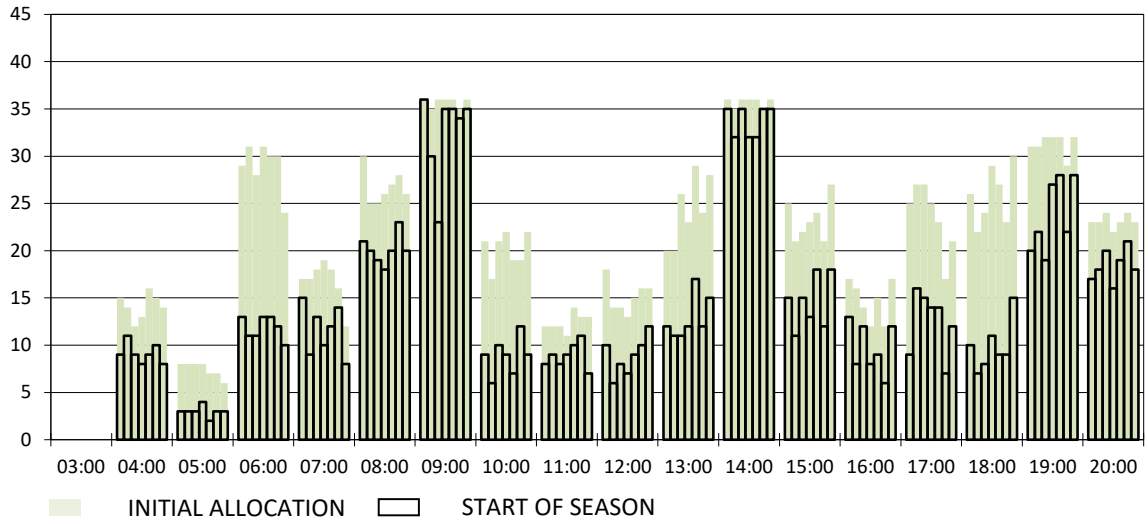
RUNWAY MOVEMENT START OF SEASON - TOTALS

Reference week, movements per hour - all times UTC



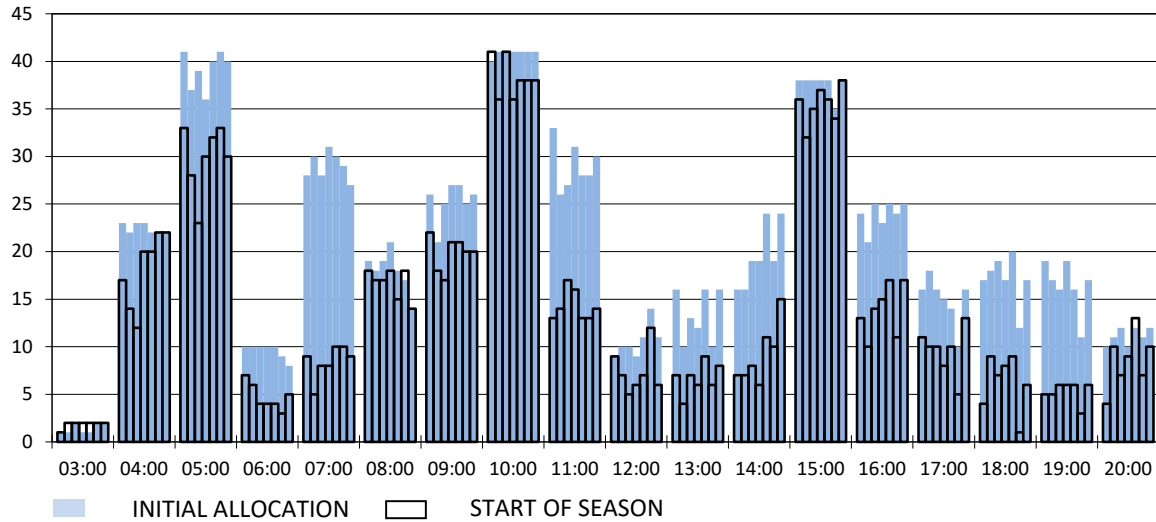
RUNWAY MOVEMENT DEVELOPMENT INITIAL ALLOCATION TO START OF SEASON - ARRIVALS

Reference week, movements per hour - all times UTC



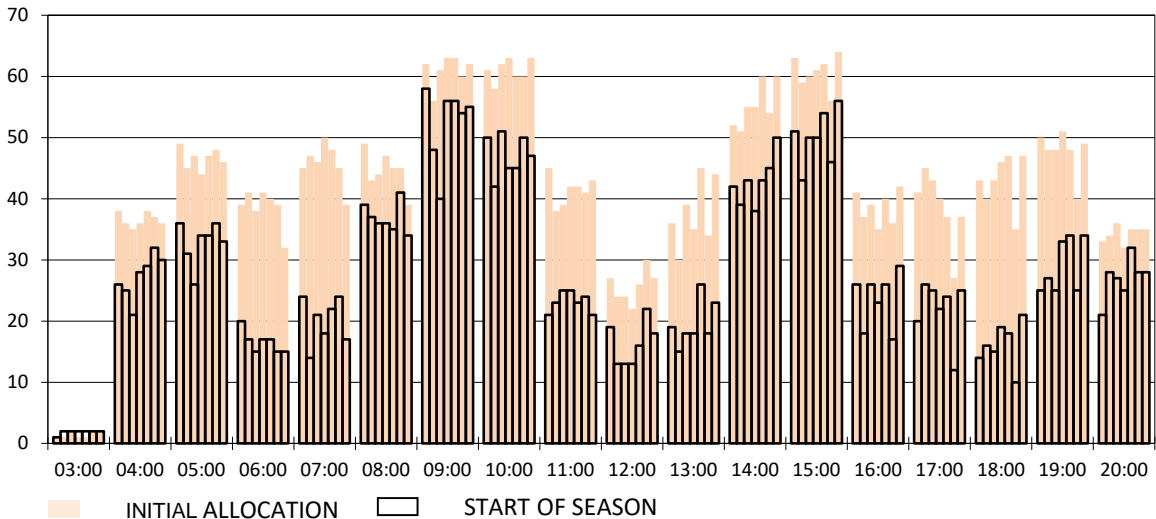
RUNWAY MOVEMENT DEVELOPMENT INITIAL ALLOCATION TO START OF SEASON - DEPARTURES

Reference week, movements per hour - all times UTC

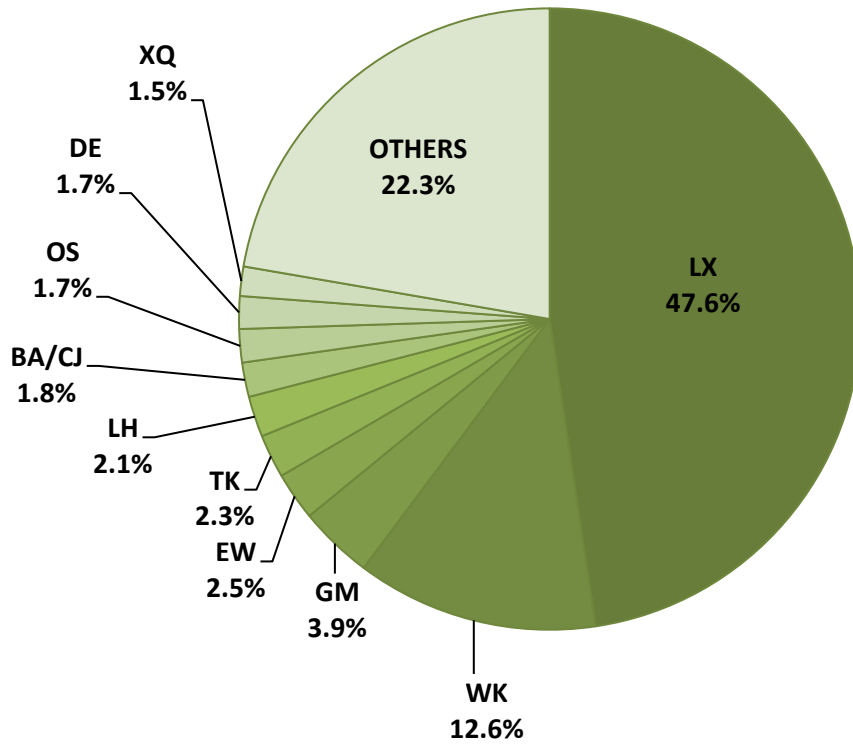


RUNWAY MOVEMENT DEVELOPMENT INITIAL ALLOCATION TO START OF SEASON - TOTALS

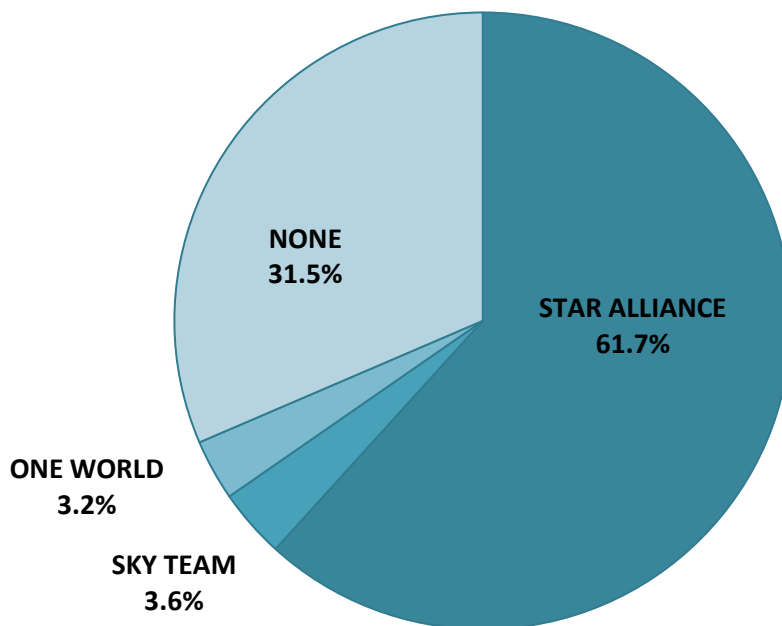
Reference week, movements per hour - all times UTC



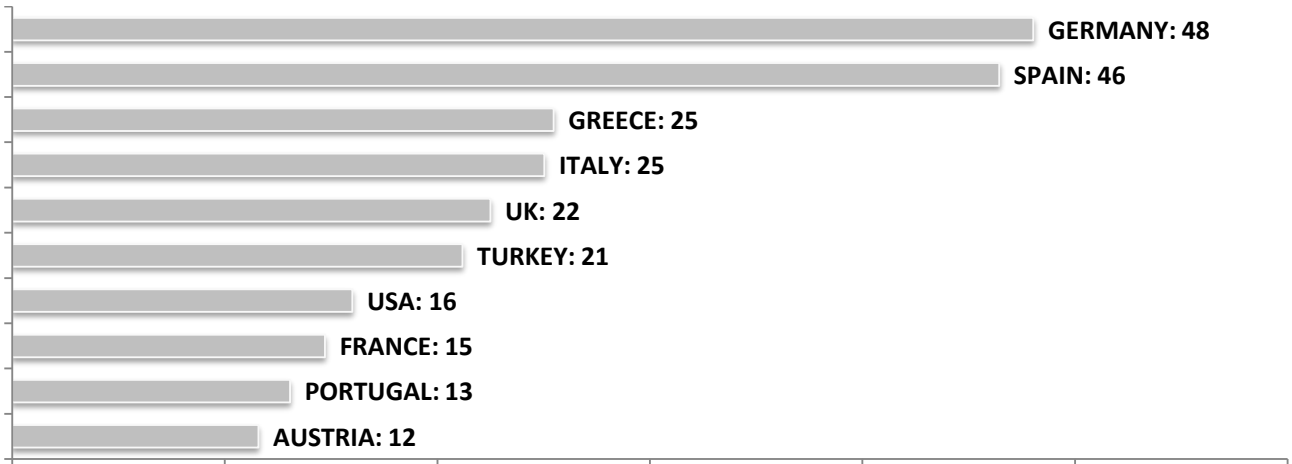
SEASONAL SLOT SHARE - 10 TOP CARRIER



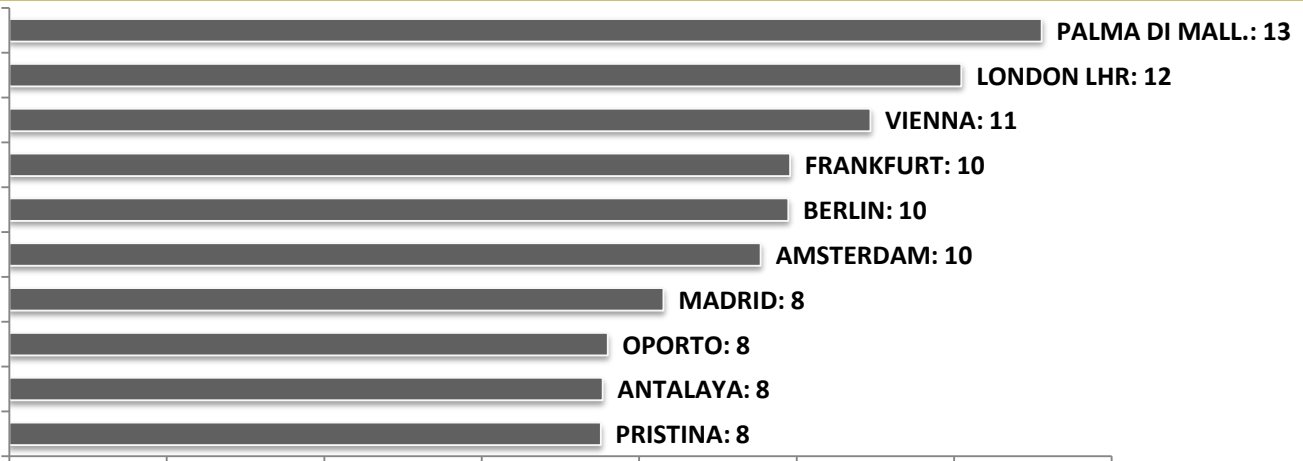
SEASONAL SLOT SHARE - PER ALLIANCES



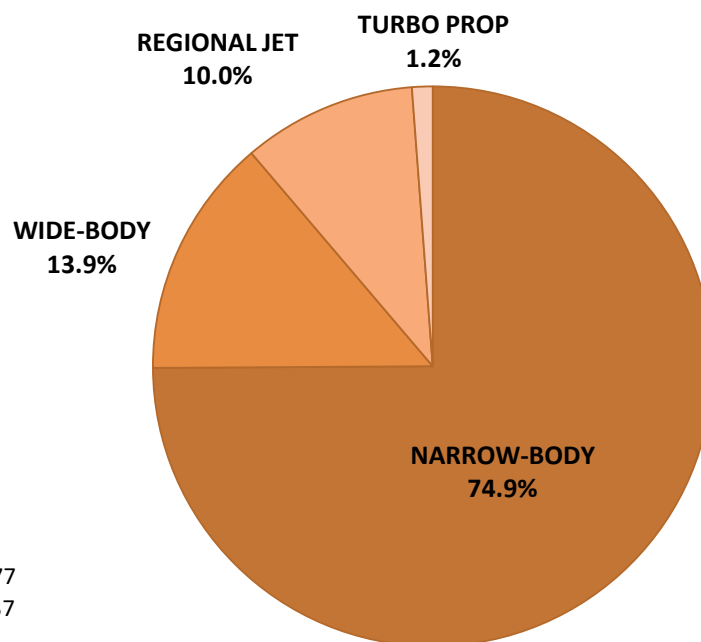
TOP 10 COUNTRIES - Number of Daily Slots



TOP 10 ROUTES - Number of Daily Slots



AIRCRAFT UTILISATION



Aircraft Sizes

- Widebody e.g. A330, A350, B777
- Narrowbody e.g. A220, A32S, B737
- Regional Jet e.g. CRJ, ERJ
- Turbo Prop e.g. ATR, DH4