

START OF SEASON REPORT GENEVA WINTER SEASON

31 OCTOBER 2021 - 26 MARCH 2022 (W21)

2021

KEY FIGURES	W20	W21	+/-
Cleared Airport Slots	33,955	50,472	48.6%
Seats (1000)	5,695	8,466	48.7%
Seats per Airport Slot	160	168	4.8%
Runway Utilisation Days 1-5	53.2%	61.7%	8.5%
Runway Utilisation Day 6	69.9%	86.6%	16.7%
Runway Utilisation Day 7	66.8%	81.6%	14.8%
Number of Carriers	60	56	-4

Note: For comparison reasons W20 figures (22 season weeks) are transposed to reflect W21's 21 season weeks!

TABLE OF CONTENTS

	Page
Overview Main Carriers	2
Runway Histograms	3
Terminal Histograms	4
Slot Shares	5
Traffic Flows, Aircraft Utilisation	6



GLOSSARY OF TERMS

Allocation	The allocation of slots within declared capacity limits.
Capacity Limits	Limiting parameters declared by the Airport Operator used in the coordination process.
Seats	The number of seats based on the aircraft configuration advised by the airline.

GUIDE TO HISTOGRAMS

The histograms show the pattern of traffic by time of day against the appropriate capacity limit. Each time period consists of seven columns representing the days-of-week, Monday through Sunday. All histograms are based on a reference week. For Winter 2021 the reference week is 14-20 February 2022.

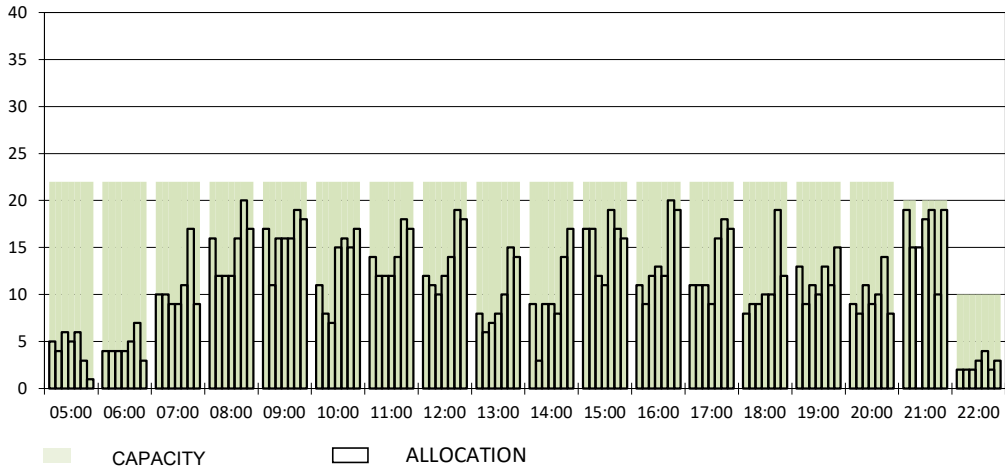
OVERVIEW MAIN CARRIERS

Number of average slots per week

	START OF SEASON				SLOT RETURN			
	W20	W21	+/-	Share	W20	W21	+/-	Share
ALL CARRIERS	1617	2403	48.6%		2999	2493	-16.9%	
Swiss Carriers	553	779	40.9%	32.4%	1032	1032	0.0%	41.4%
<i>where of</i>								
EasyJet Switzerland	363	518	42.7%	21.6%	547	532	-2.7%	21.3%
Swiss International Air Lines	187	261	39.6%	10.9%	481	180	-62.6%	7.2%
Chair	3	0		0.0%	4	0		0.0%
Foreign Carriers	1064	1624	52.6%	67.6%	1967	1461	-25.7%	58.6%
<i>where of</i>								
EasyJet Europe&UK	168	403	139.9%	16.8%	465	416	-10.5%	16.7%
British Airways / BA CityFlyer	154	183	18.8%	7.6%	206	198	-3.9%	7.9%
Air France	78	106	35.9%	4.4%	126	121	-4.0%	4.9%
Lufthansa	54	81	50.0%	3.4%	105	88	-16.2%	3.5%
KLM	65	73	12.3%	3.0%	83	83	0.0%	3.3%
Brussels Airlines	25	59	136.0%	2.5%	79	68	-13.9%	2.7%
TAP Air Portugal	53	56	5.7%	2.3%	66	57	-13.6%	2.3%
Iberia	36	53	47.2%	2.2%	54	54	0.0%	2.2%
SAS	31	44	41.9%	1.8%	49	49	0.0%	2.0%
Turkish Airlines	24	34	41.7%	1.4%	36	40	11.1%	1.6%
Maj. foreign Carriers	688	1092	58.7%	45.4%	1269	1174	-7.5%	47.1%

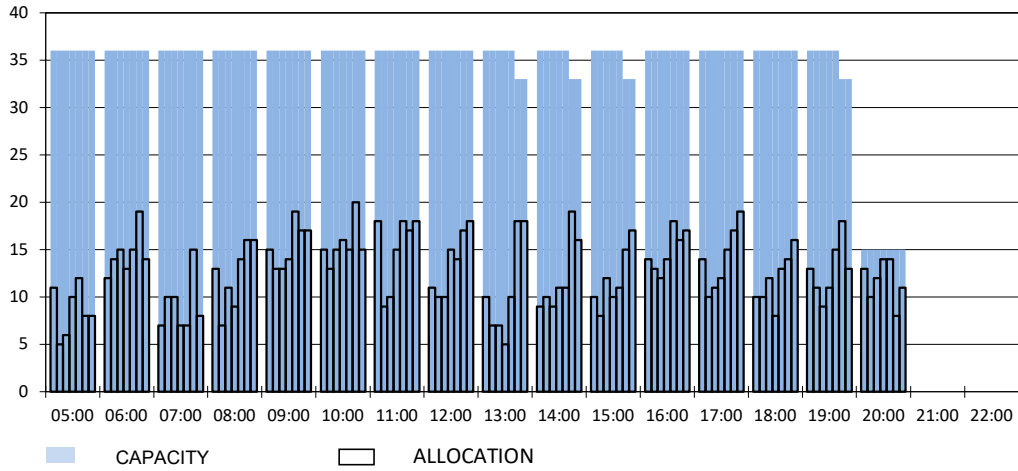
RUNWAY MOVEMENT START OF SEASON - ARRIVALS

Reference week, movements per hour - all times UTC



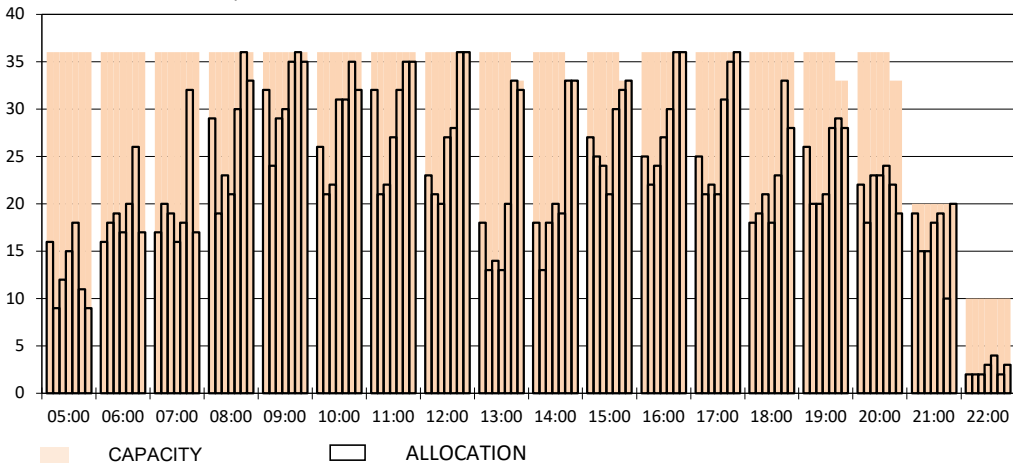
RUNWAY MOVEMENT START OF SEASON - DEPARTURES

Reference week, movements per hour - all times UTC



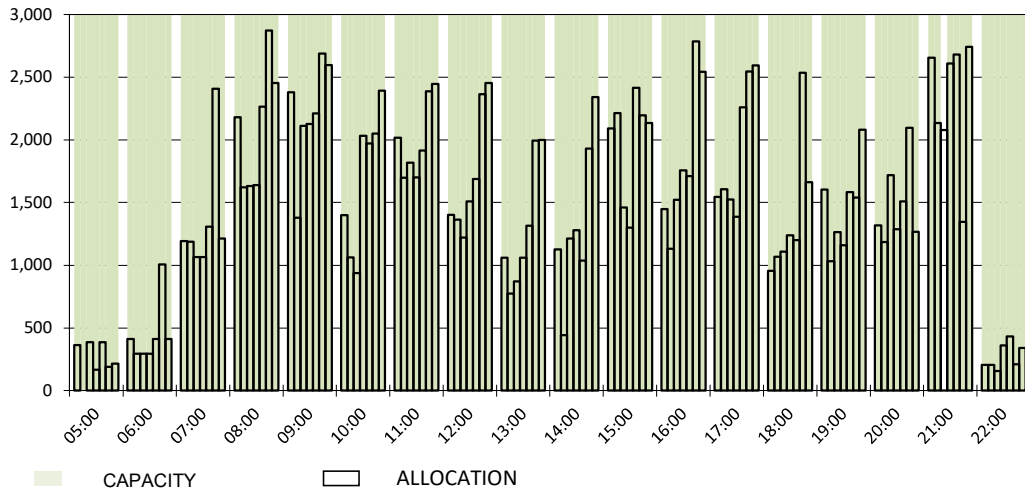
RUNWAY MOVEMENT START OF SEASON - TOTALS

Reference week, movements per hour - all times UTC



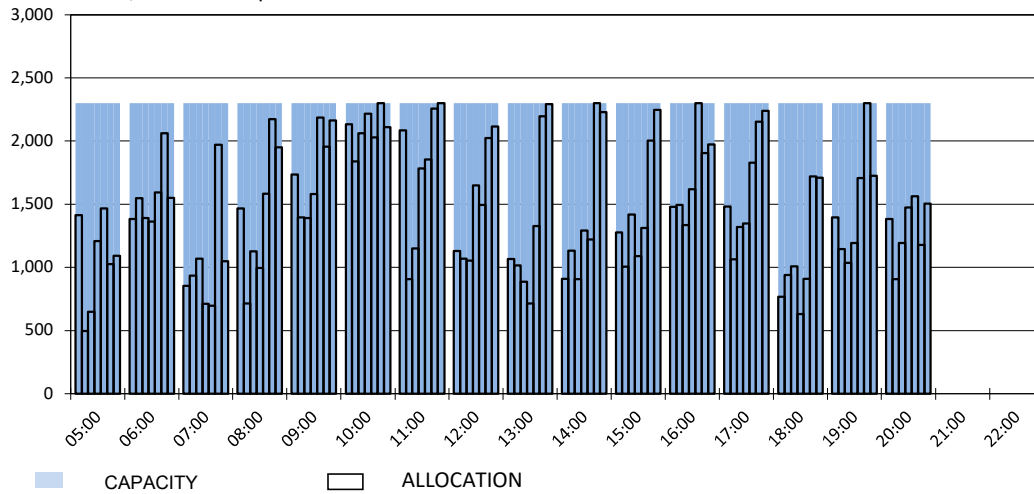
MAIN TERMINAL START OF SEASON - ARRIVALS

Reference week, movements per hour - all times UTC



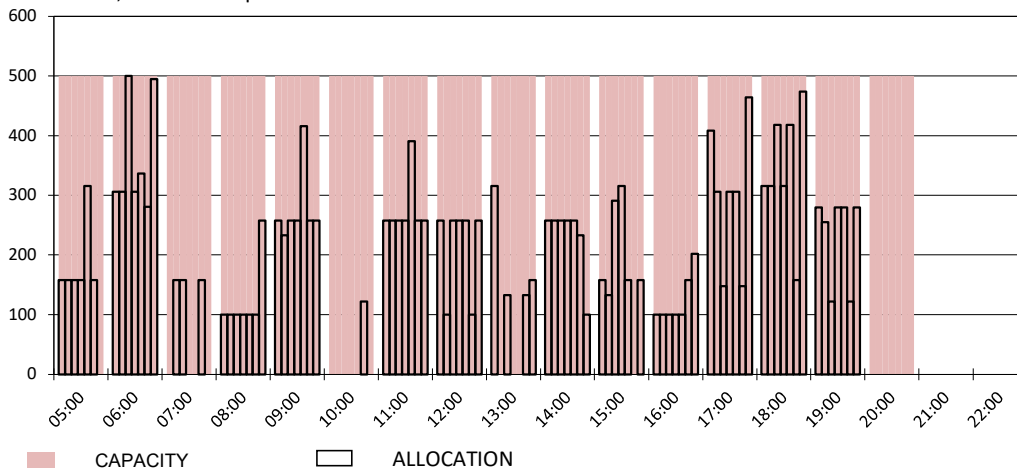
MAIN TERMINAL START OF SEASON - DEPARTURES

Reference week, movements per hour - all times UTC

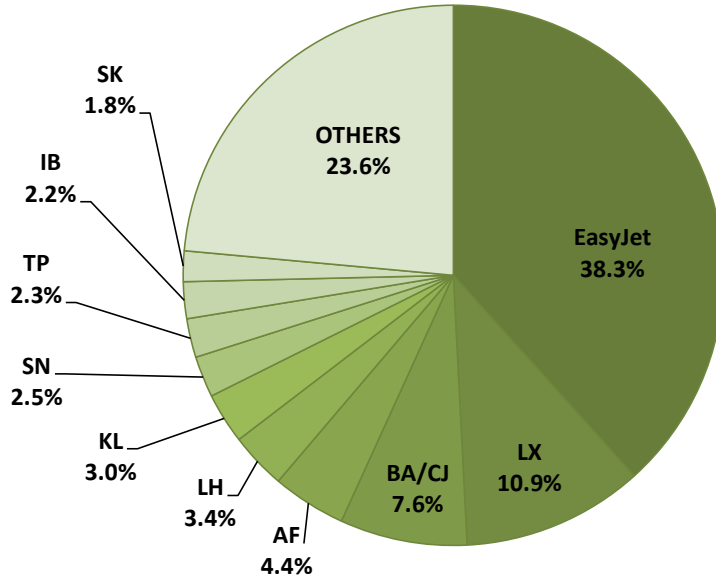


FRENCH SECTOR TERMINAL START OF SEASON - DEPARTURES

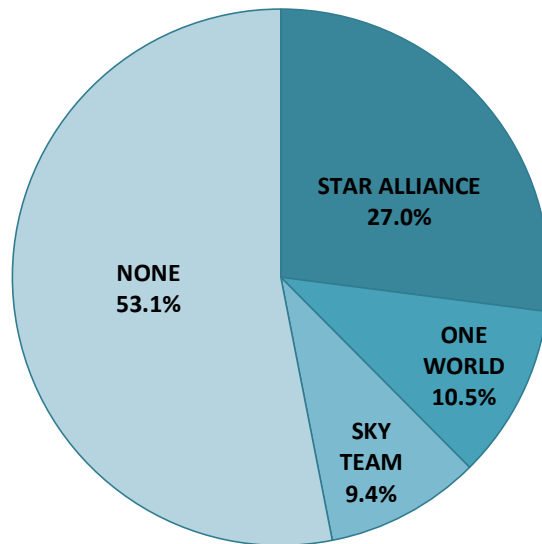
Reference week, movements per hour - all times UTC



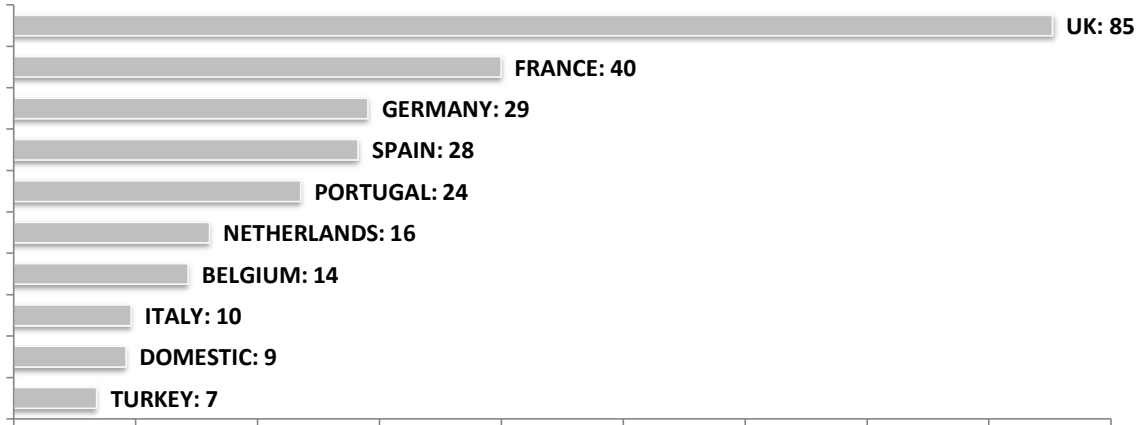
SEASONAL SLOT SHARE - 10 TOP CARRIER



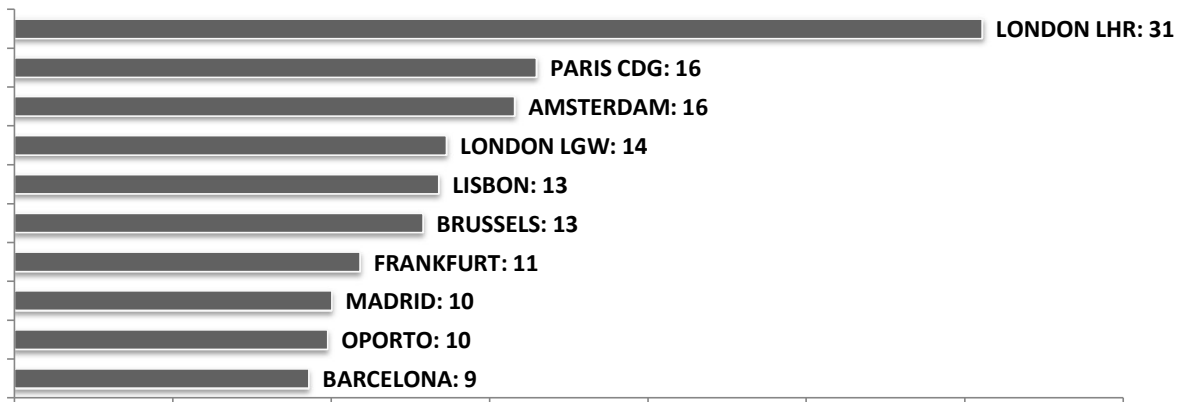
SEASONAL SLOT SHARE - PER ALLIANCES



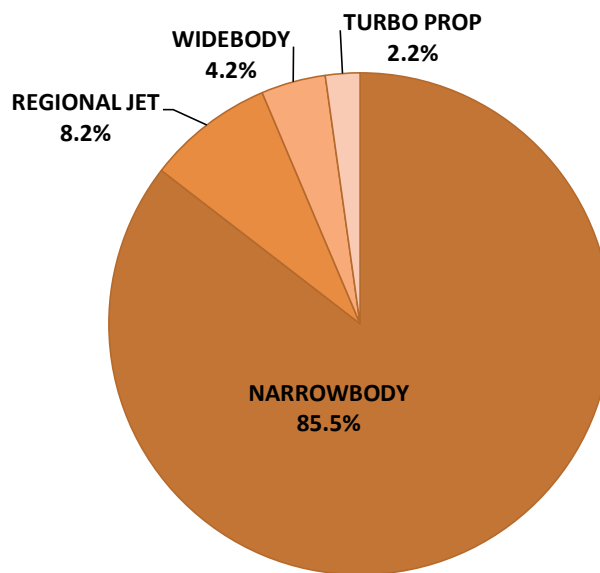
TOP 10 COUNTRIES - Number of Daily Slots



TOP 10 ROUTES - Number of Daily Slots



AIRCRAFT UTILISATION



Aircraft Sizes e.g. A330, A340, B777
 Widebody e.g. A220, A32S, B737
 Narrowbody e.g. CRJ, ERJ
 Regional Jet e.g. ATR, DH4