

## START OF SEASON REPORT ZURICH WINTER SEASON

31 OCTOBER 2021 - 26 MARCH 2022 (W21)

# 2021

KEY FIGURES	W20	W21	+/-
Cleared Airport Slots	40,561	<b>65,623</b>	61.8%
Seats offered (1000)	7,109	<b>11,656</b>	64.0%
Seats per Airport Slot	175	<b>178</b>	1.3%
Runway Utilisation	27.3%	<b>42.1%</b>	14.9%
Number of Carriers	47	<b>53</b>	+6

*Note: For comparison reasons W20 figures (22 season weeks) are transposed to reflect W21's 21 season weeks!*

### TABLE OF CONTENTS

### Page

Overview Main Carriers	2
Runway Histograms	3,4
Slot Shares	5
Traffic Flows, Aircraft Utilisation	6



### GLOSSARY OF TERMS

<b>Allocation</b>	The allocation of slots within declared capacity limits.
<b>Capacity Limits</b>	Limiting parameters declared by the Airport Operator used in the coordination process.
<b>Seats</b>	The number of seats based on the aircraft configuration advised by the airline.

### GUIDE TO HISTOGRAMS

The histograms show the pattern of traffic by time of day against the appropriate capacity limit. Each time period consists of seven columns representing the days-of-week, Monday through Sunday. All histograms are based on a reference week. For Winter 2021 the reference week is 14-20 February 2022.

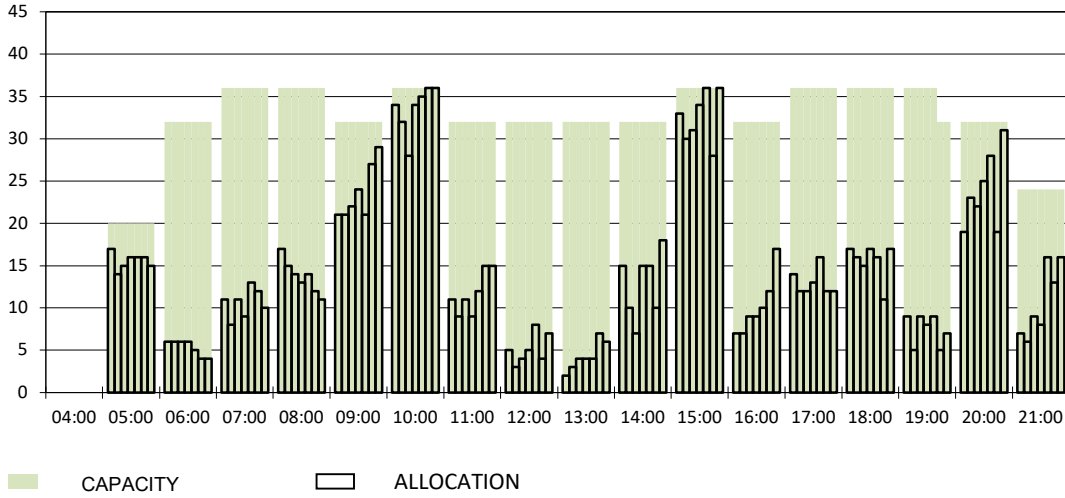
**OVERVIEW MAIN CARRIERS**

Number of average slots per week

	START OF SEASON				SLOT RETURN			
	W20	W21	+/-	Share	W20	W21	+/-	Share
<b>ALL CARRIERS</b>	1931	3125	61.8%		4375	2811	-35.7%	
<b>Swiss Carriers</b>	1020	1858	82.2%	59.5%	2752	1394	-49.3%	49.6%
<i>where of</i>								
Swiss International Air Lines	841	1579	87.8%	50.5%	2449	1154	-52.9%	41.1%
Edelweiss Air	126	221	75.4%	7.1%	250	182	-27.2%	6.5%
Chair Airlines	43	55	27.9%	1.8%	53	58	9.4%	2.1%
Helvetic	10	3	-70.0%	0.1%	0	0		0.0%
<b>Foreign Carriers</b>	911	1267	39.1%	40.5%	1623	1417	-12.7%	50.4%
<i>where of</i>								
British Airways/BA CityFlyer	82	113	37.8%	3.6%	143	133	-7.0%	4.7%
Lufthansa	66	106	60.6%	3.4%	140	117	-16.4%	4.2%
Eurowings	56	90	60.7%	2.9%	148	85	-42.6%	3.0%
KLM	67	73	9.0%	2.3%	82	82	0.0%	2.9%
Turkish Airlines	44	59	34.1%	1.9%	48	58	20.8%	2.1%
TAP Air Portugal	56	58	3.6%	1.9%	70	58	-17.1%	2.1%
SAS Scandinavian Airlines	42	55	31.0%	1.8%	69	61	-11.6%	2.2%
Easyjet	26	55	111.5%	1.8%	116	59	-49.1%	2.1%
Iberia	23	42	82.6%	1.3%	42	42	0.0%	1.5%
Austrian Airlines	35	42	20.0%	1.3%	90	42	-53.3%	1.5%
<b>Maj. foreign Carriers</b>	497	693	39.4%	22.2%	948	737	-22.3%	26.2%

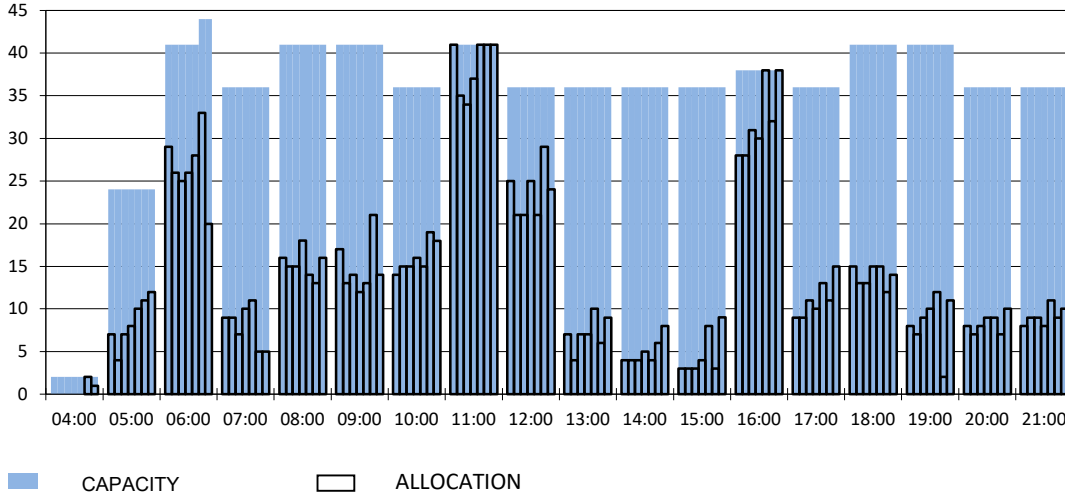
### RUNWAY MOVEMENT START OF SEASON - ARRIVALS

Reference week, movements per hour - all times UTC



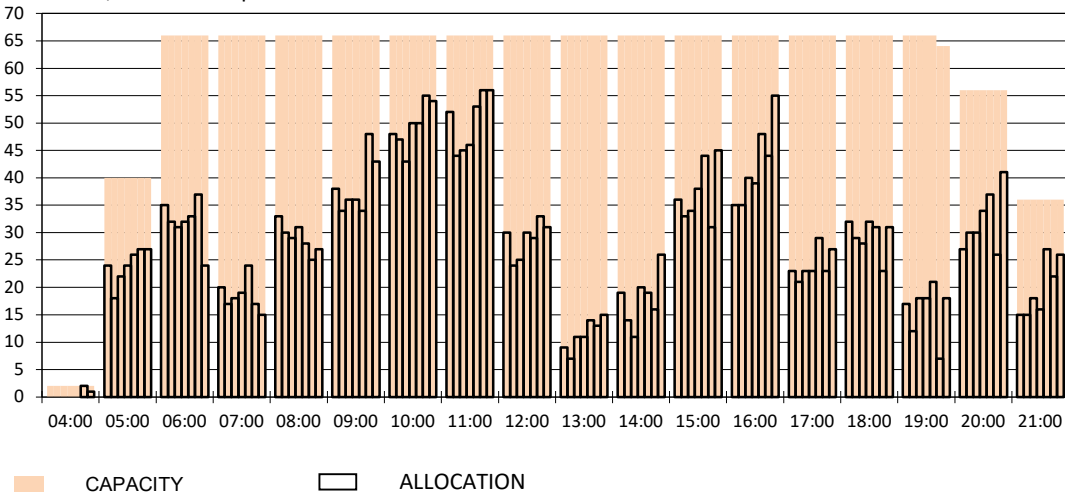
### RUNWAY MOVEMENT START OF SEASON - DEPARTURES

Reference week, movements per hour - all times UTC



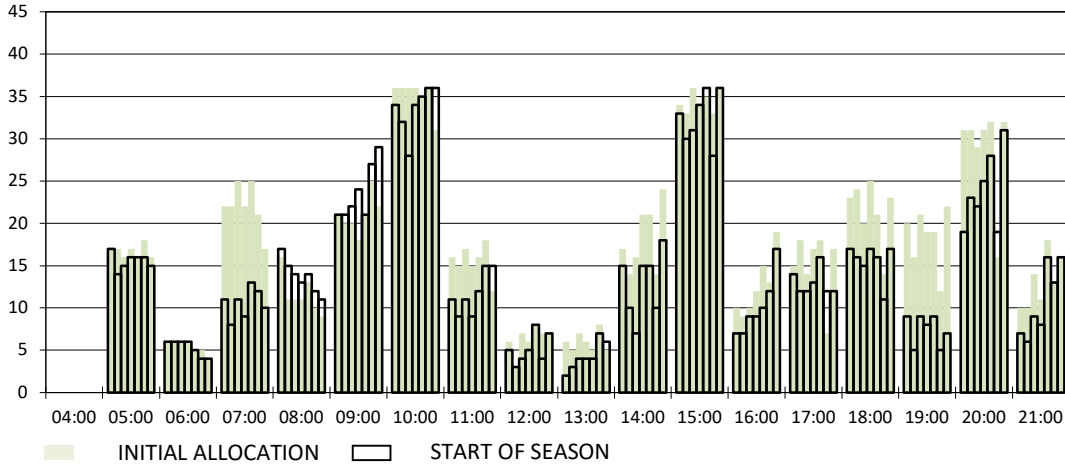
### RUNWAY MOVEMENT START OF SEASON - TOTALS

Reference week, movements per hour - all times UTC



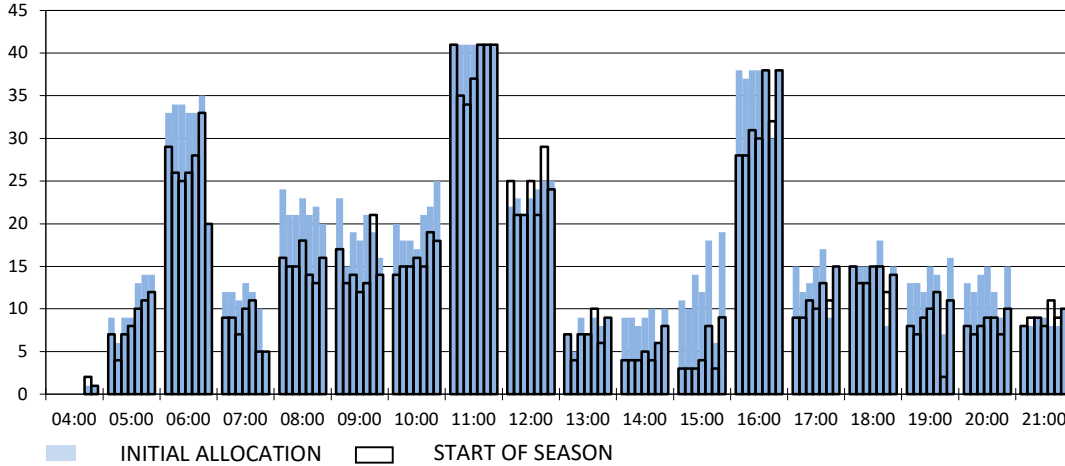
**RUNWAY MOVEMENT DEVELOPMENT INITIAL ALLOCATION TO START OF SEASON - ARRIVALS**

Reference week, movements per hour - all times UTC



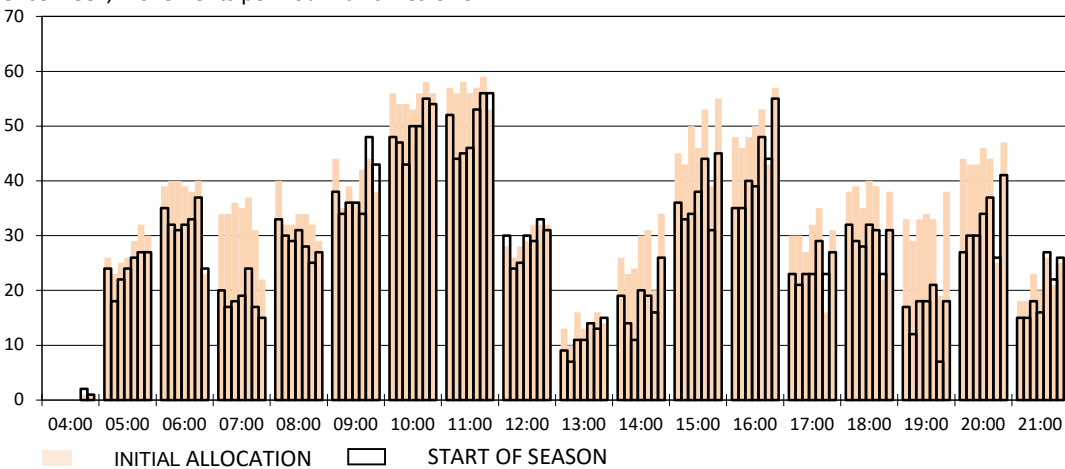
**RUNWAY MOVEMENT DEVELOPMENT INITIAL ALLOCATION TO START OF SEASON - DEPARTURES**

Reference week, movements per hour - all times UTC

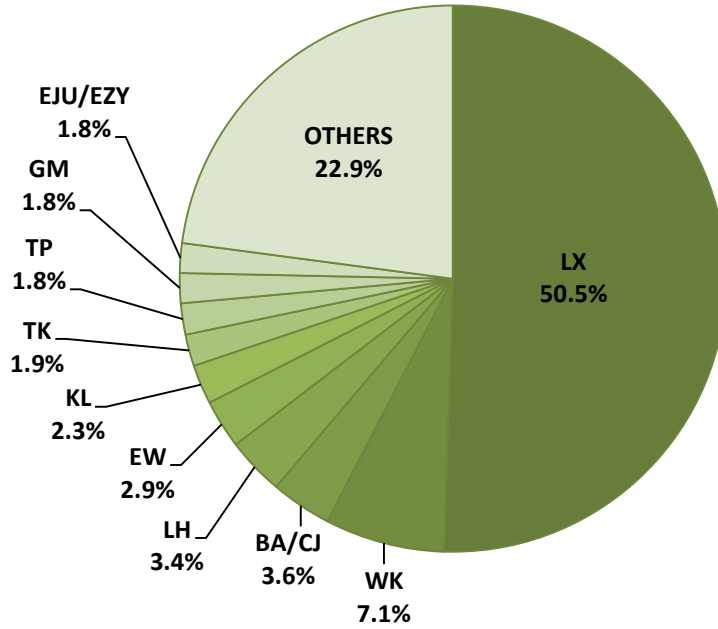


**RUNWAY MOVEMENT DEVELOPMENT INITIAL ALLOCATION TO START OF SEASON - TOTALS**

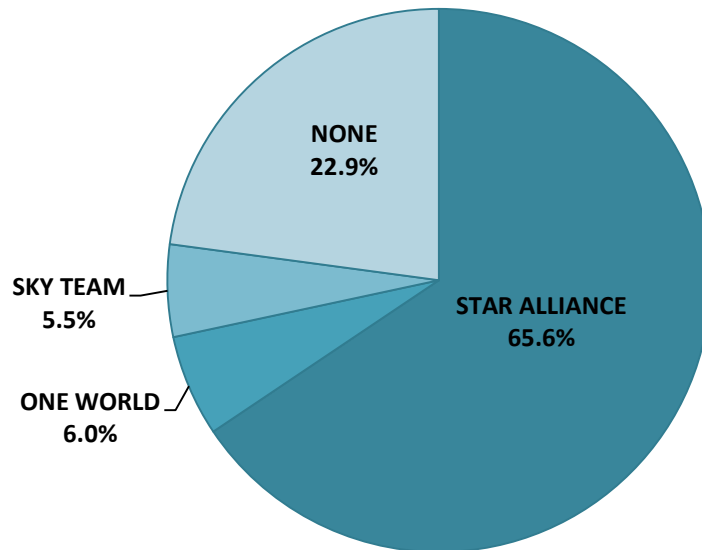
Reference week, movements per hour - all times UTC



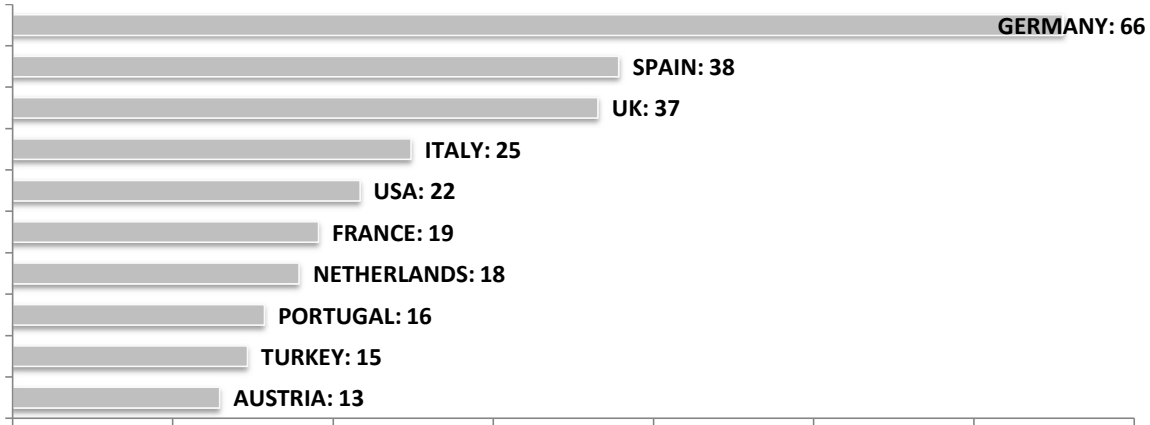
### SEASONAL SLOT SHARE - 10 TOP CARRIER



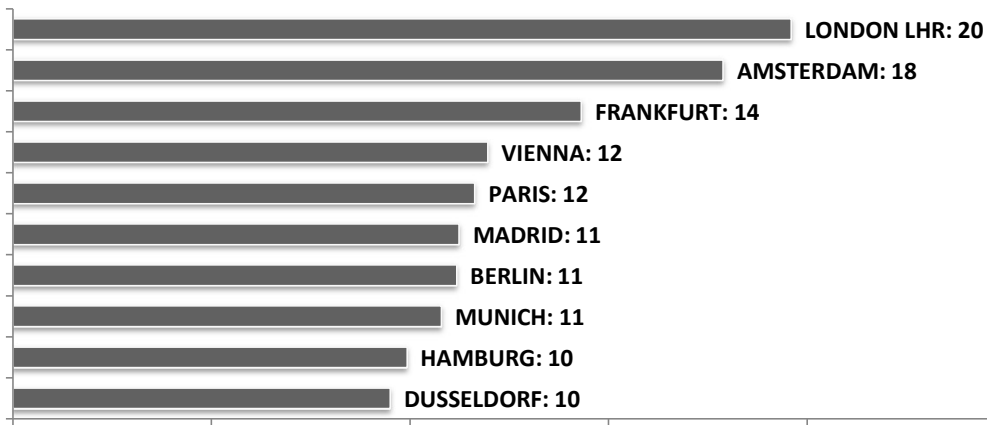
### SEASONAL SLOT SHARE - PER ALLIANCES



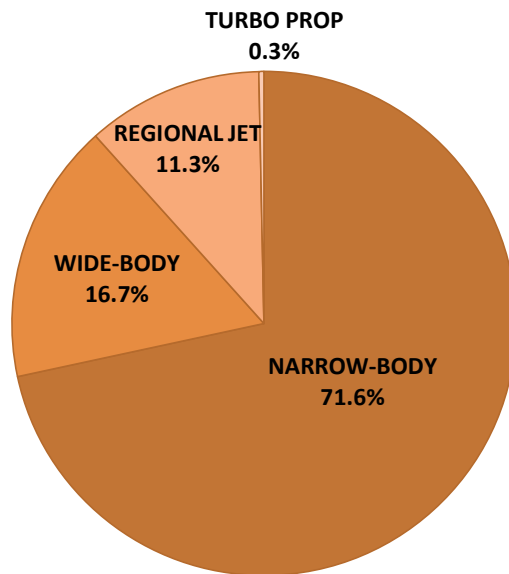
**TOP 10 COUNTRIES - Number of Daily Slots**



**TOP 10 ROUTES - Number of Daily Slots**



**AIRCRAFT UTILISATION**



- Aircraft Sizes**
- Widebody e.g. A330, B767, B777
  - Narrowbody e.g. A220, A32S, B737
  - Regional Jet e.g. ARJ, CRJ, EMJ
  - Turbo Prop e.g. ATR, DH4, S20