

START OF SEASON REPORT GENEVA SUMMER SEASON

27 MARCH - 29 OCTOBER 2022 (S22)

2022

KEY FIGURES	S21	S22	+/-
Airport Slots	48,878	82,312	68.4%
Seats offered (1000)	8,043	14,012	74.2%
Seats per Airport Slot	165	170	3.2%
Runway Utilisation	37.2%	62.6%	25.4%
Number of Carriers	48	57	+9

TABLE OF CONTENTS

	Page
Management Summary	2
Overview Main Carriers	3
Runway Histograms	4
Terminal Histograms	5
Slot Shares	6
Traffic Flows, Aircraft Utilisation	7

GLOSSARY OF TERMS

Allocation	The allocation of slots within declared capacity limits.
Capacity Limits	Limiting parameters declared by the Airport Operator used in the coordination process.
Seats	The number of seats based on the aircraft configuration advised by the airline.

GUIDE TO HISTOGRAMS

The histograms show the pattern of traffic by time of day against the appropriate capacity limit. Each time period consists of seven columns representing the days-of-week, Monday through Sunday. All histograms are based on a reference week. For Summer 2022 the reference week is 12-18 September 2022.

MANAGEMENT SUMMARY

INTRODUCTION

This seasonal report represents the planned operations at Geneva Airport for the summer 2022 scheduling season which extends for 31 weeks from 27 March to 29 October 2022.

The following is a summary of the most significant changes between slot return and start of season summer 2022:

NEW SERVICES

→ EASYJET	KGS	2 weekly
→	RHO	2 weekly
→ VUELING	IBZ	3 weekly

FULLY RETURNED SERVICES

→ ROSSIYA AIRLINES	LED	2 weekly
--------------------	-----	----------

REDUCED SERVICES

→ AIR MALTA	MLA	day 2 to 1 weekly
→ UNITED AIRLINES	IAD	2 weekly to 5 weekly

OVERVIEW MAIN CARRIERS

Number of average slots per week

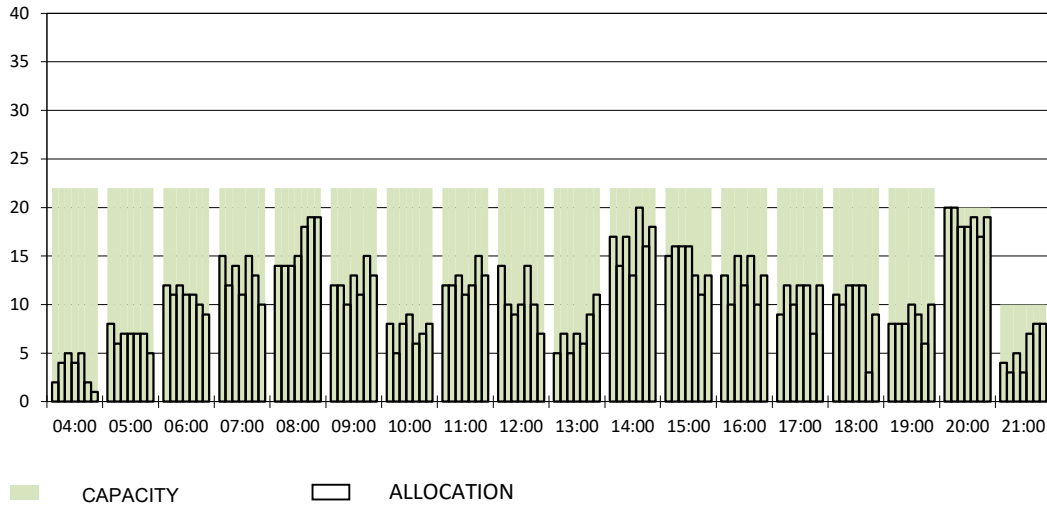
	START OF SEASON			
	S21	S22	+/-	Share
ALL CARRIERS	1577	2655	68.4%	
Swiss Carriers	716	1087	51.8%	40.9%
<i>where of</i>				
EasyJet Switzerland	458	681	48.7%	25.6%
Swiss International Air Lines	256	406	58.6%	15.3%
Germania Flug AG	2	0	-100.0%	0.0%
Foreign Carriers	861	1568	82.1%	59.1%
<i>where of</i>				
EasyJet Europe & UK	194	386	99.0%	14.5%
Air France	75	115	53.3%	4.3%
British Airways / BA Cityflyer	48	111	131.3%	4.2%
Lufthansa	55	96	74.5%	3.6%
KLM	39	76	94.9%	2.9%
Iberia	31	65	109.7%	2.4%
Turkish Airlines	38	54	42.1%	2.0%
ITA Airways	34	50	47.1%	1.9%
TAP Air Portugal	41	48	17.1%	1.8%
Maj. foreign Carriers	555	1001	80.4%	37.7%

SLOT RETURN			
S21*	S22	+/-	Share
1816	2721	49.8%	
845	1097	29.8%	40.3%
553	686	24.1%	25.2%
290	411	41.7%	15.1%
2	0	-100.0%	0.0%
971	1624	67.3%	59.7%
240	394	64.2%	14.5%
84	115	36.9%	4.2%
62	112	80.6%	4.1%
66	98	48.5%	3.6%
42	84	100.0%	3.1%
32	66	106.3%	2.4%
42	54	28.6%	2.0%
38	52	36.8%	1.9%
46	49	6.5%	1.8%
652	1024	57.1%	37.6%

*comparison with EU Return Date 27 February 2021 (Complete Series Return)

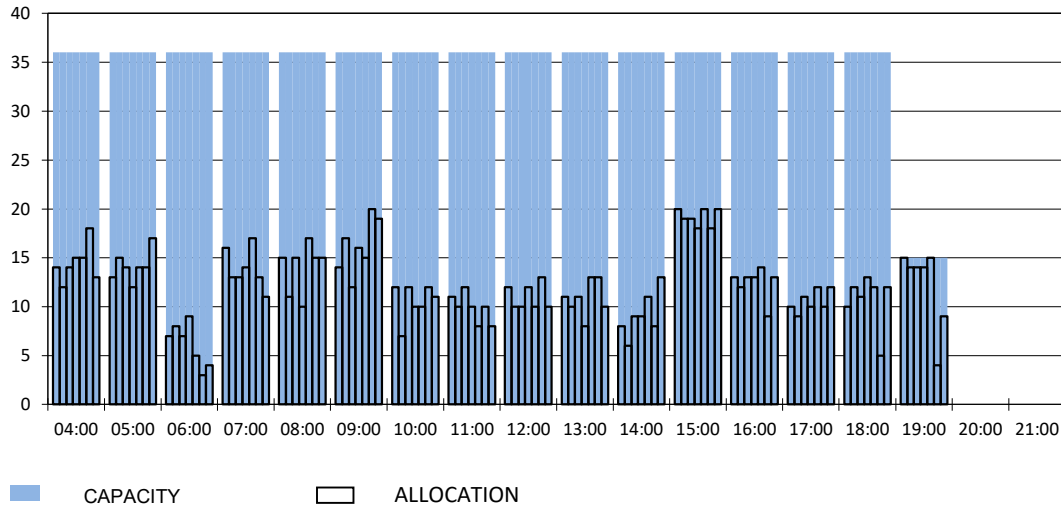
RUNWAY START OF SEASON - ARRIVALS

Reference week, movements per hour - all times UTC



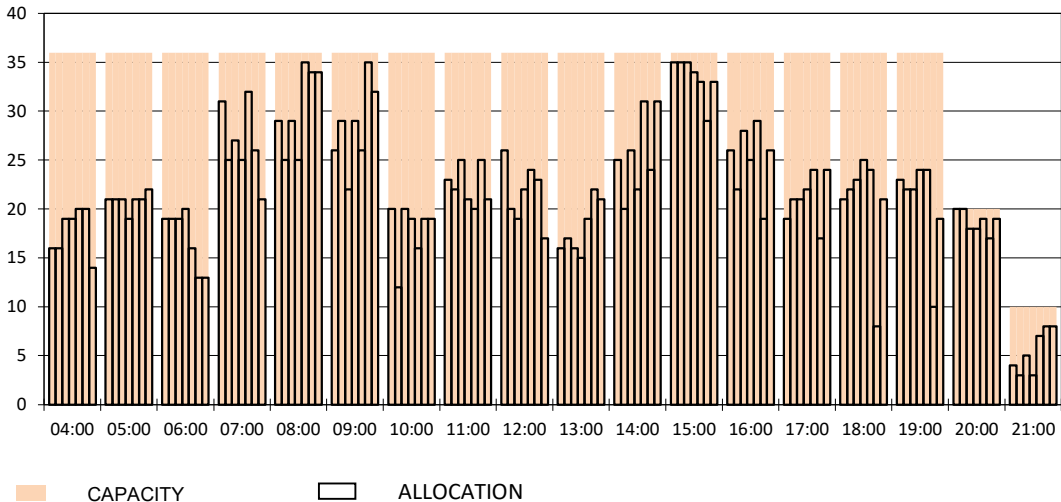
RUNWAY MOVEMENT START OF SEASON - DEPARTURES

Reference week, movements per hour - all times UTC



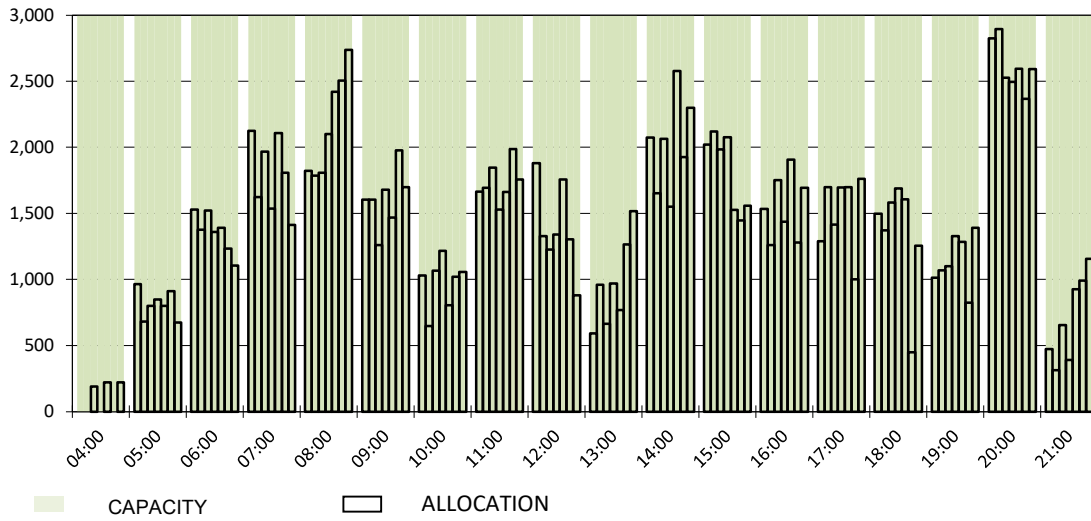
RUNWAY MOVEMENT START OF SEASON - TOTALS

Reference week, movements per hour - all times UTC



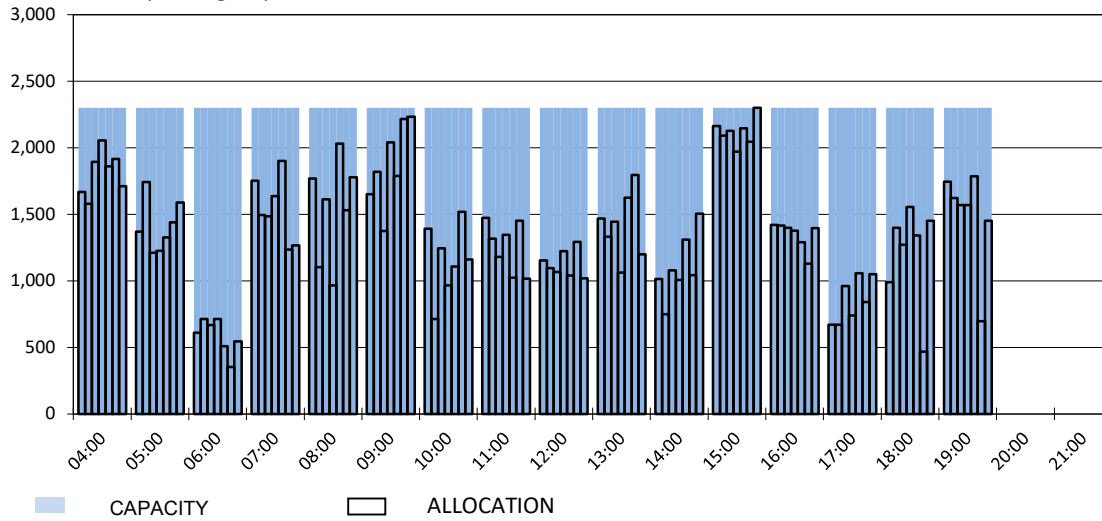
MAIN TERMINAL START OF SEASON - ARRIVALS

Reference week, passengers per hour - all times UTC



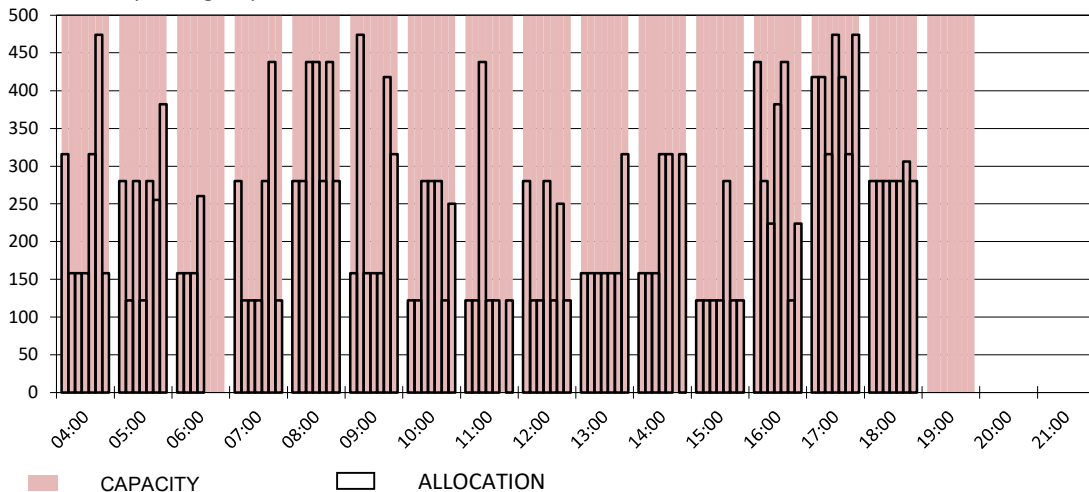
MAIN TERMINAL START OF SEASON - DEPARTURES

Reference week, passengers per hour - all times UTC

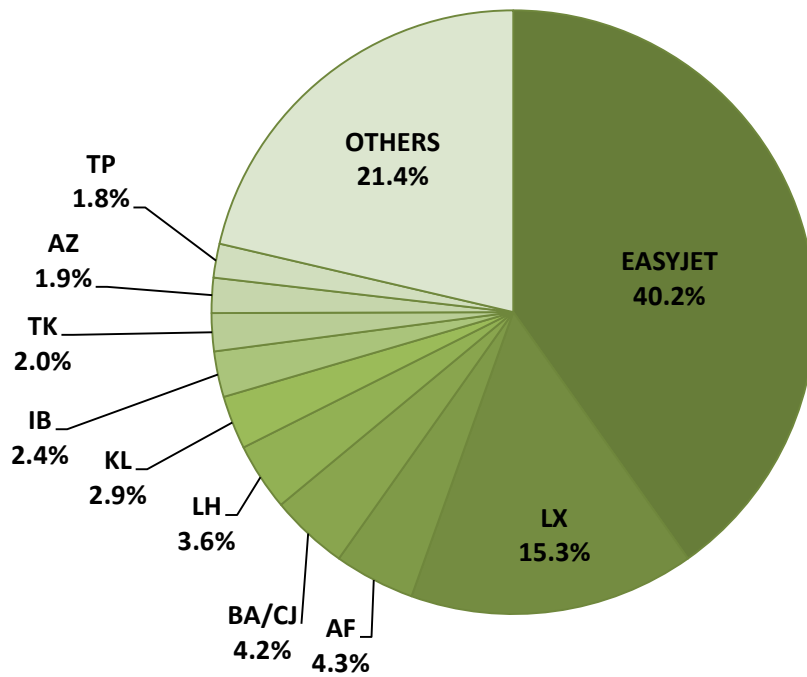


FRENCH SECTOR TERMINAL START OF SEASON - DEPARTURES

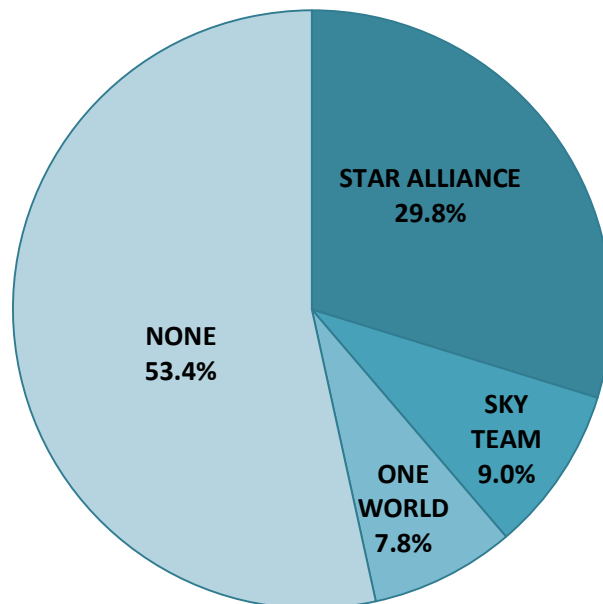
Reference week, passengers per hour - all times UTC



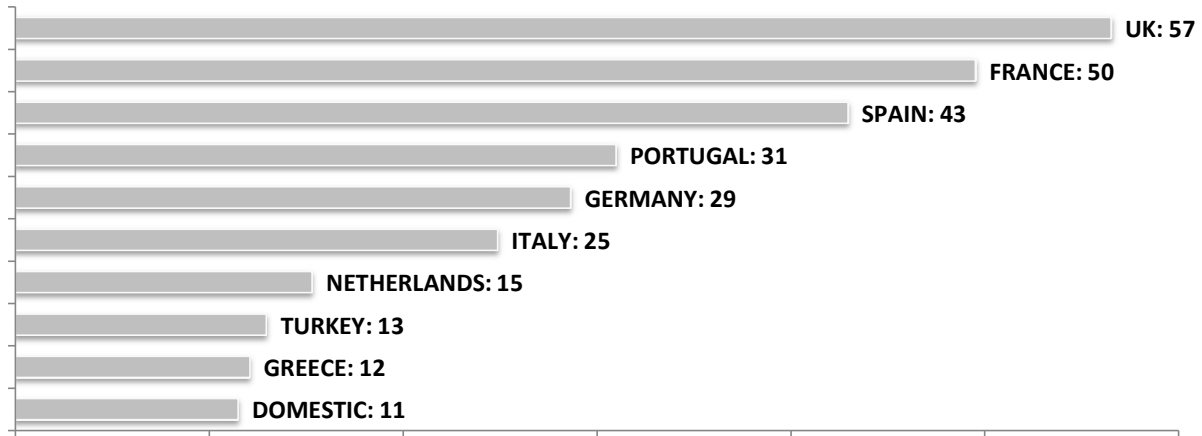
SEASONAL SLOT SHARE - 10 TOP CARRIER



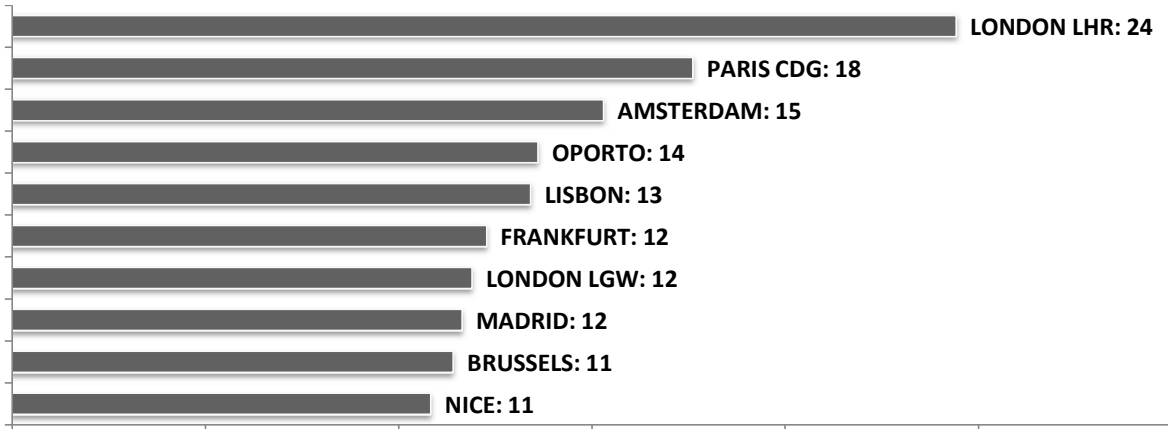
SEASONAL SLOT SHARE - PER ALLIANCES



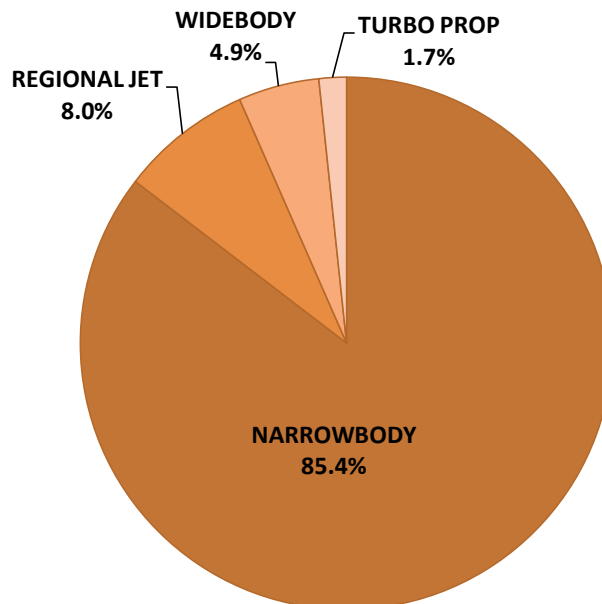
TOP 10 COUNTRIES - Number of Daily Slots



TOP 10 ROUTES - Number of Daily Slots



AIRCRAFT UTILISATION



- Aircraft Sizes**
- Widebody e.g. A330, B767, B777
 - Narrowbody e.g. A32S, B737, BCS
 - Regional Jet e.g. CRJ, ERJ
 - Turbo Prop e.g. ATR, DH4