

## START OF SEASON REPORT ZURICH SUMMER SEASON

27 MARCH - 29 OCTOBER 2022 (S22)

# 2022

KEY FIGURES	S21	S22	+/-
Cleared Airport Slots	83,950	<b>133,354</b>	58.8%
Seats offered (1000)	14,939	<b>23,282</b>	55.8%
Seats per Airport Slot	178	<b>175</b>	-1.9%
Runway Utilisation	36.5%	<b>58.0%</b>	21.5%
Number of Carriers	54	<b>69</b>	+15

### TABLE OF CONTENTS

	Page
Overview Main Carriers	2
Runway Histograms	3,4
Slot Shares	5
Traffic Flows, Aircraft Utilisation	6

### GLOSSARY OF TERMS

<b>Allocation</b>	The allocation of slots within declared capacity limits.
<b>Capacity Limits</b>	Limiting parameters declared by the Airport Operator used in the coordination process.
<b>Seats</b>	The number of seats based on the aircraft configuration advised by the airline.

### GUIDE TO HISTOGRAMS

The histograms show the pattern of traffic by time of day against the appropriate capacity limit. Each time period consists of seven columns representing the days-of-week, Monday through Sunday. All histograms are based on a reference week.

For Summer 2022 the reference week is 12 -18 September 2022.

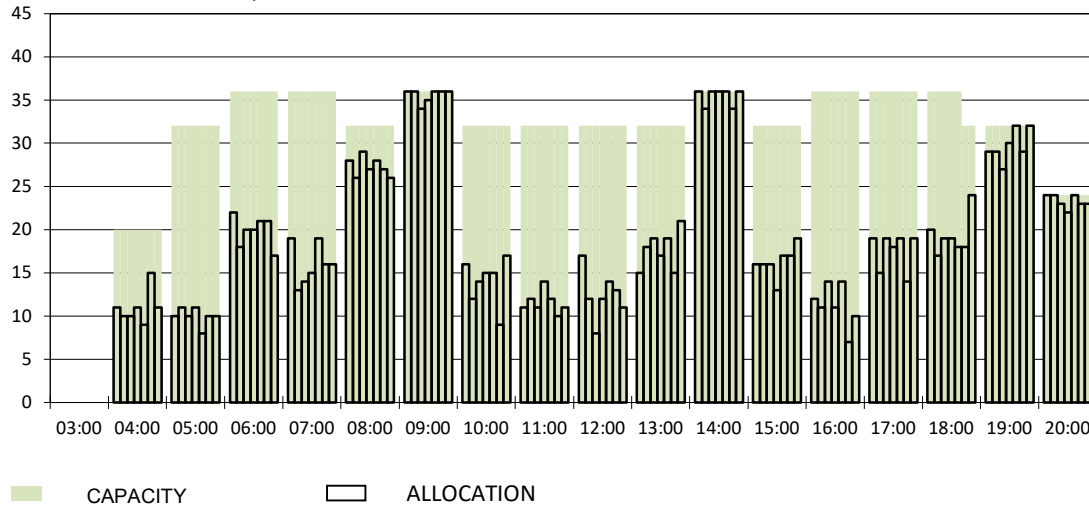
## OVERVIEW MAIN CARRIERS

Number of average slots per week

	START OF SEASON				SLOT RETURN			
	S21	S22	+/-	Share	S21	S22	+/-	Share
<b>ALL CARRIERS</b>	2708	4302	58.9%		4716	4361	-7.5%	
<b>Swiss Carriers</b>	1752	2733	56.0%	63.5%	2803	2736	-2.4%	62.7%
<i>where of</i>								
Swiss International Air Lines	1290	2173	68.4%	50.5%	2277	2175	-4.5%	49.9%
Edelweiss Air	341	402	17.9%	9.3%	405	395	-2.5%	9.1%
Chair Airlines	105	141	34.3%	3.3%	108	147	36.1%	3.4%
Helvetic	16	17	6.3%	0.4%	13	19	46.2%	0.4%
<b>Foreign Carriers</b>	956	1569	64.1%	36.5%	1913	1625	-15.1%	37.3%
<i>where of</i>								
Lufthansa	57	137	140.4%	3.2%	140	140	0.0%	3.2%
Eurowings	68	103	51.5%	2.4%	156	103	-34.0%	2.4%
British Airways, BACF	48	100	108.3%	2.3%	118	100	-15.3%	2.3%
Turkish Airlines	61	84	37.7%	2.0%	80	86	7.5%	2.0%
KLM	40	77	92.5%	1.8%	82	82	0.0%	1.9%
Austrian Airlines	47	59	25.5%	1.4%	93	60	-35.5%	1.4%
Easyjet	41	56	36.6%	1.3%	105	57	-45.7%	1.3%
United Airlines	25	52	108.0%	1.2%	53	52	-1.9%	1.2%
Vueling	26	48	84.6%	1.1%	58	49	-15.5%	1.1%
Air France	22	48	118.2%	1.1%	53	48	-9.4%	1.1%
<b>Maj. foreign Carriers</b>	435	764	75.6%	17.8%	938	777	-17.2%	17.8%

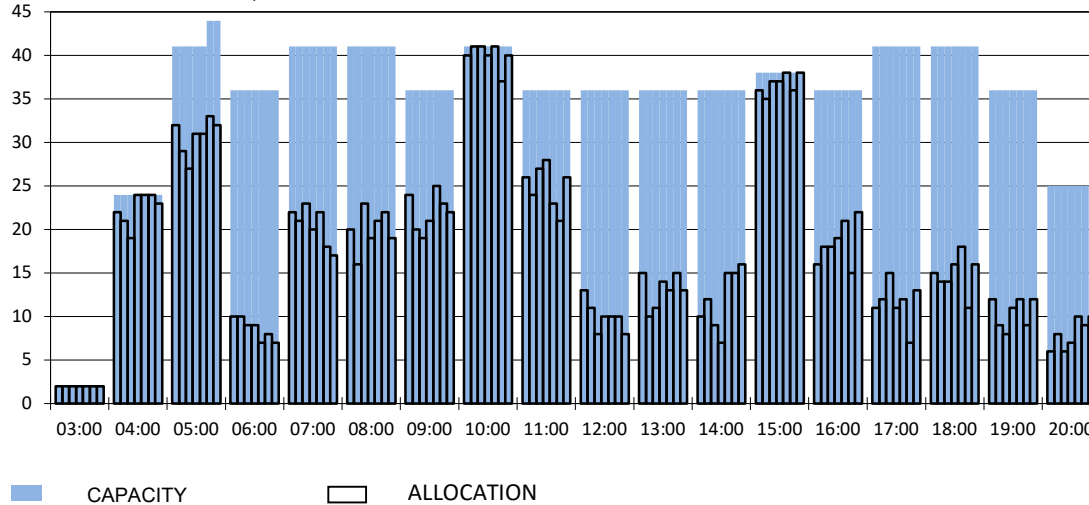
### RUNWAY MOVEMENT START OF SEASON - ARRIVALS

Reference week, movements per hour - all times UTC



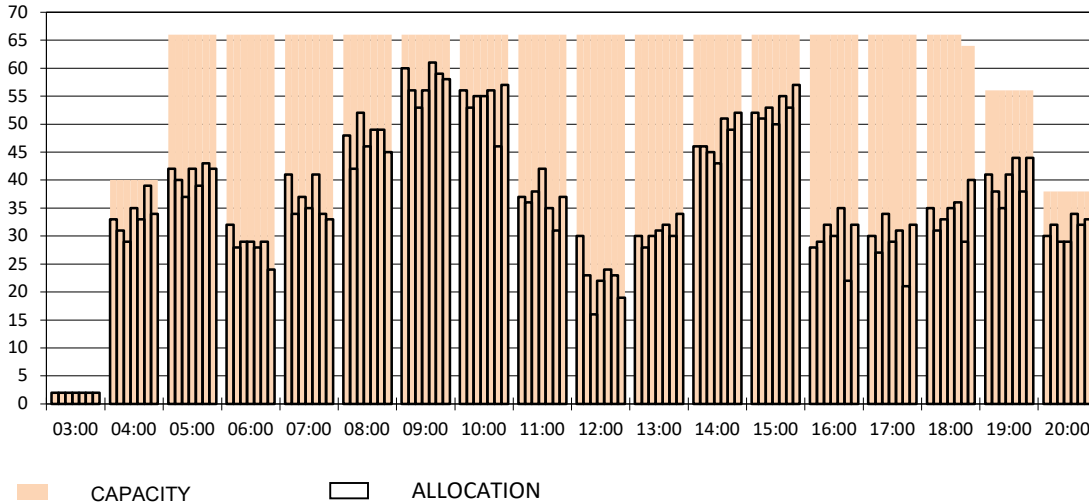
### RUNWAY MOVEMENT START OF SEASON - DEPARTURES

Reference week, movements per hour - all times UTC



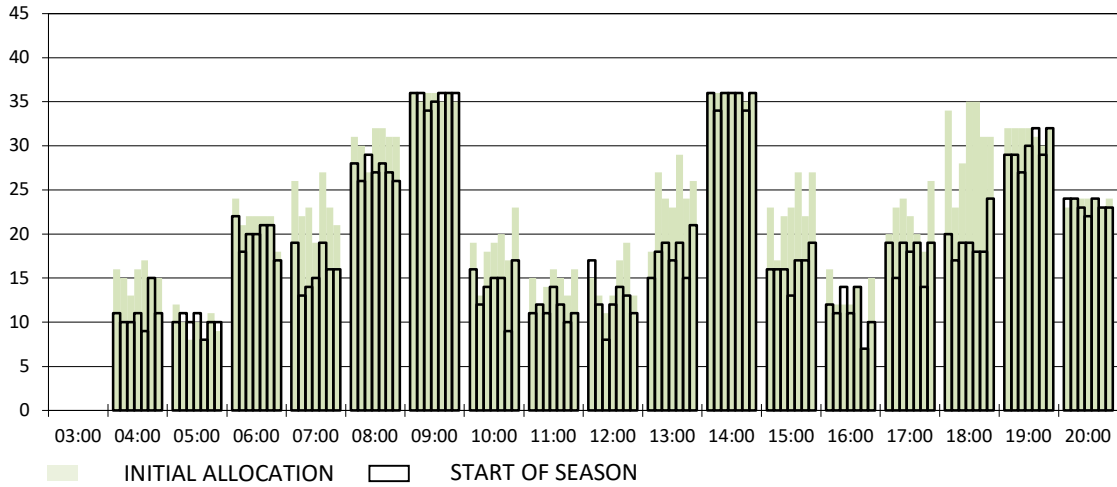
### RUNWAY MOVEMENT START OF SEASON - TOTALS

Reference week, movements per hour - all times UTC



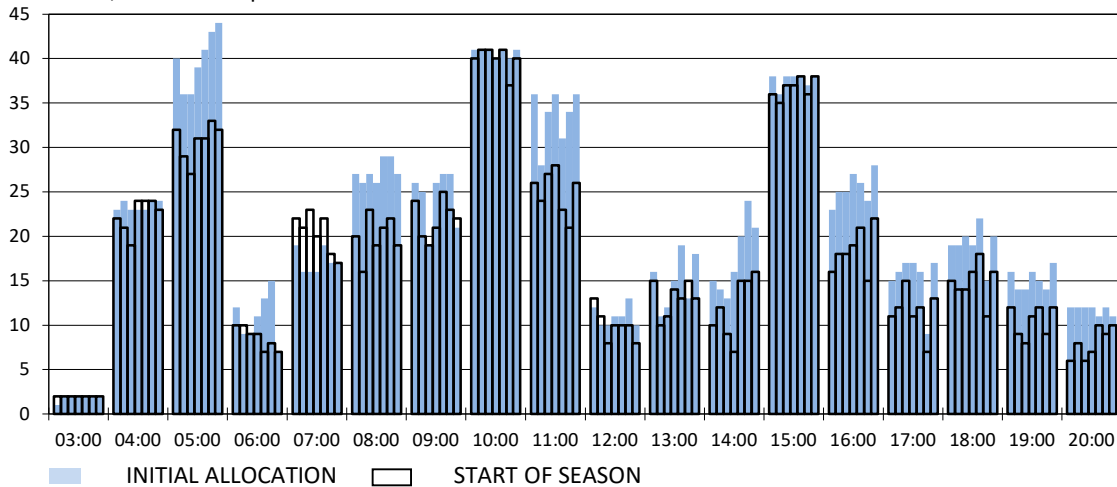
**RUNWAY MOVEMENT DEVELOPMENT INITIAL ALLOCATION TO START OF SEASON - ARRIVALS**

Reference week, movements per hour - all times UTC



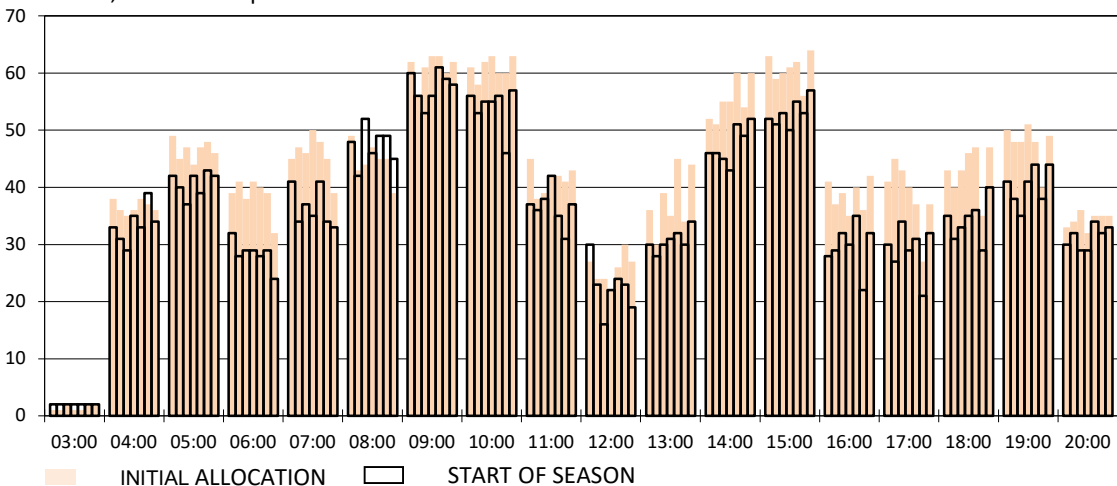
**RUNWAY MOVEMENT DEVELOPMENT INITIAL ALLOCATION TO START OF SEASON - DEPARTURES**

Reference week, movements per hour - all times UTC

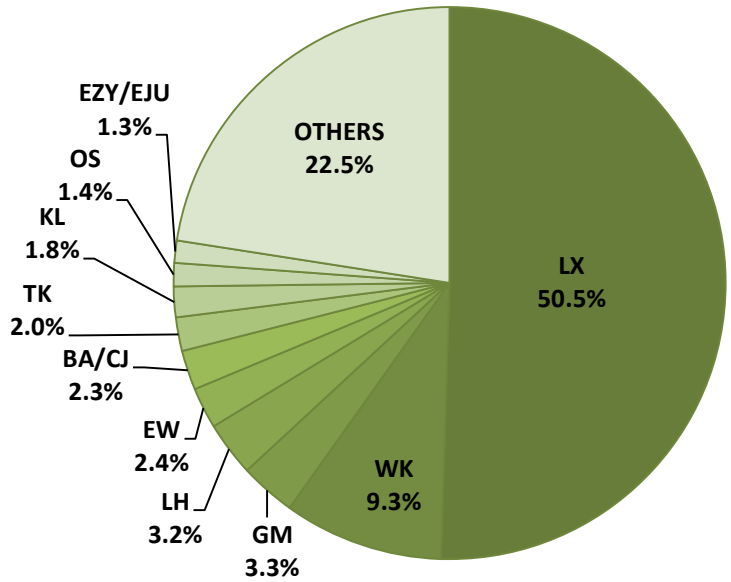


**RUNWAY MOVEMENT DEVELOPMENT INITIAL ALLOCATION TO START OF SEASON - TOTALS**

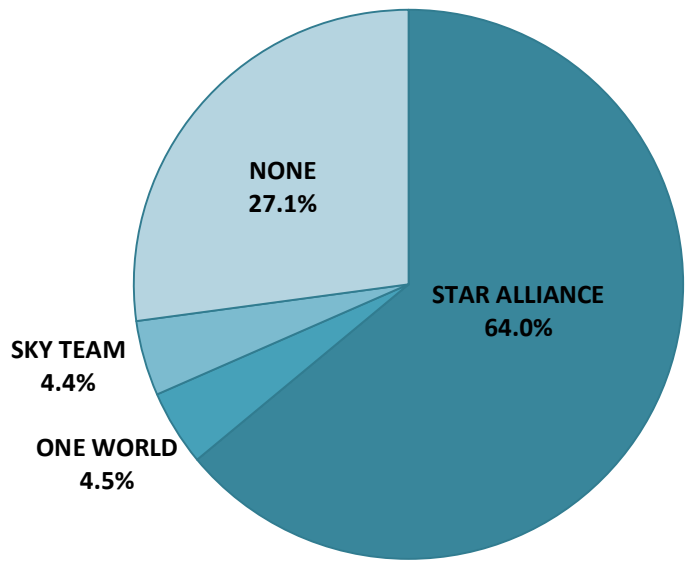
Reference week, movements per hour - all times UTC



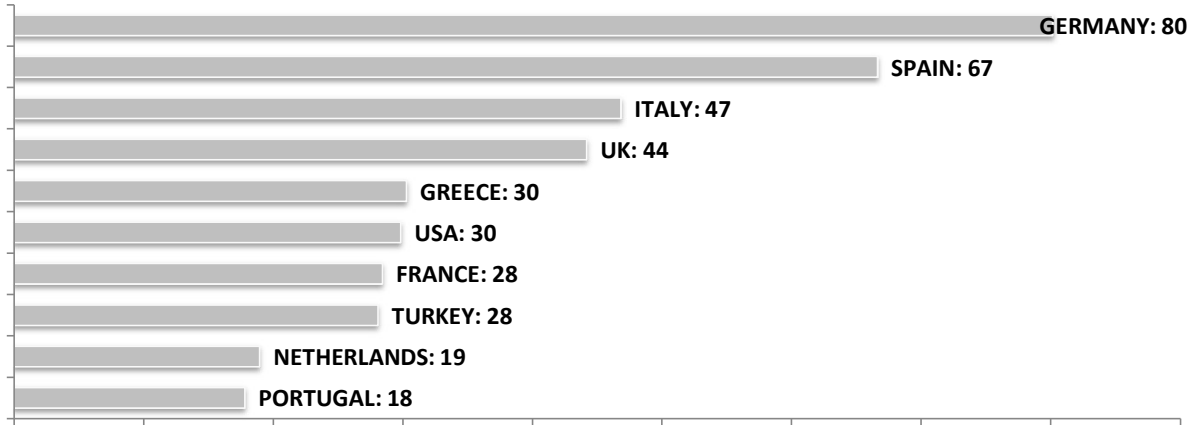
**SEASONAL SLOT SHARE - 10 TOP CARRIER**



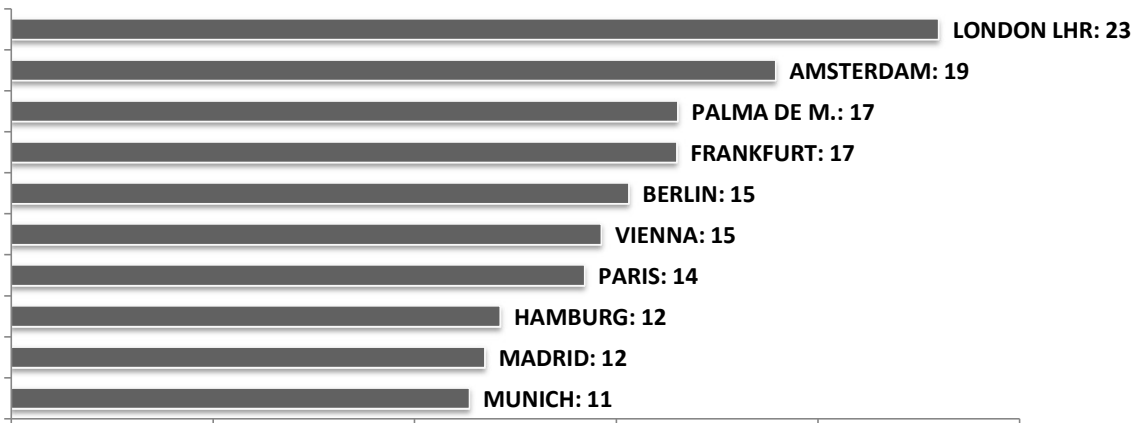
**SEASONAL SLOT SHARE - PER ALLIANCES**



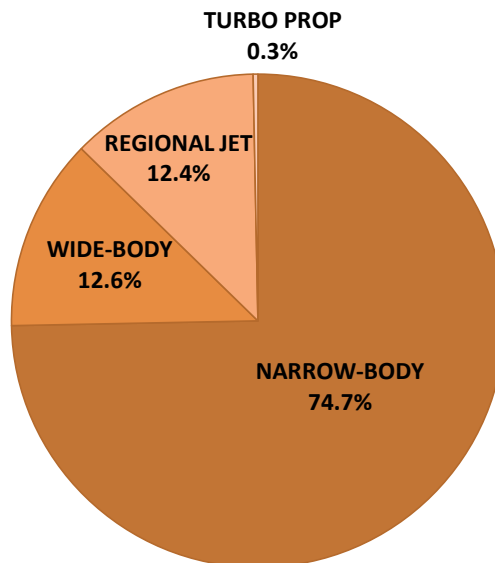
**TOP 10 COUNTRIES - Number of Daily Slots**



**TOP 10 ROUTES - Number of Daily Slots**



**AIRCRAFT UTILISATION**



- Aircraft Sizes**
- Widebody e.g. A330, A350, B777
  - Narrowbody e.g. A220, A32S, B737
  - Regional Jet e.g. CRJ, ERJ
  - Turbo Prop e.g. ATR, DH4