

START OF SEASON REPORT GENEVA WINTER SEASON

30 OCTOBER 2022 - 25 MARCH 2023 (W22)

2022

KEY FIGURES	W21	W22	+/-
Cleared Airport Slots	50,472	52,540	4.1%
Seats (1000)	8,466	8,976	6.0%
Seats per Airport Slot	168	171	1.7%
Runway Utilisation Days 1-5	61.7%	62.6%	0.9%
Runway Utilisation Day 6	86.6%	83.4%	-3.2%
Runway Utilisation Day 7	81.6%	79.7%	-1.9%
Number of Carriers	56	58	2

TABLE OF CONTENTS

	Page
Management Summary	2
Overview Main Carriers	3
Runway Histograms	4
Terminal Histograms	5
Slot Shares	6
Traffic Flows, Aircraft Utilisation	7

GLOSSARY OF TERMS

Allocation	The allocation of slots within declared capacity limits.
Capacity Limits	Limiting parameters declared by the Airport Operator used in the coordination process.
Seats	The number of seats based on the aircraft configuration advised by the airline.

GUIDE TO HISTOGRAMS

The histograms show the pattern of traffic by time of day against the appropriate capacity limit. Each time period consists of seven columns representing the days-of-week, Monday through Sunday. All histograms are based on a reference week. For Winter 2022 the reference week is 13-19 February 2023.

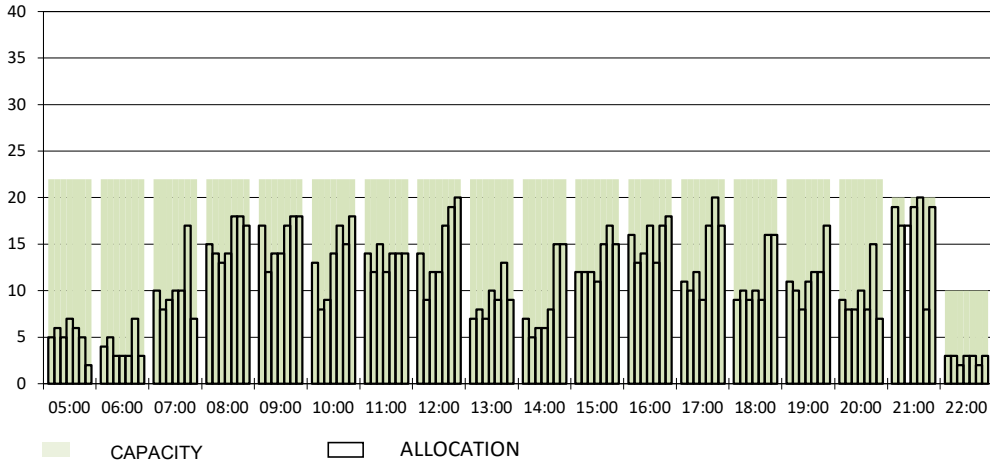
OVERVIEW MAIN CARRIERS

Number of average slots per week

	START OF SEASON				SLOT RETURN			
	W21	W22	+/-	Share	W21	W22	+/-	Share
ALL CARRIERS	2403	2502	4.1%		2493	2607	4.6%	
Swiss Carriers	779	861	10.5%	34.4%	1032	894	-13.4%	34.3%
<i>where of</i>								
EasyJet Switzerland	518	516	-0.4%	20.6%	532	527	-0.9%	20.2%
Swiss International Air Lines	261	345	32.2%	13.8%	180	367	103.9%	14.1%
Chair	0	0		0.0%	0	0		0.0%
Foreign Carriers	1624	1641	1.0%	65.6%	1461	1713	17.2%	65.7%
<i>where of</i>								
EasyJet Europe&UK	403	424	5.2%	16.9%	416	433	4.1%	16.6%
British Airways / BA CityFlyer	183	203	10.9%	8.1%	198	205	3.5%	7.9%
Air France	106	115	8.5%	4.6%	121	124	2.5%	4.8%
Lufthansa	81	91	12.3%	3.6%	88	90	2.3%	3.5%
KLM	73	75	2.7%	3.0%	83	84	1.2%	3.2%
Iberia	53	65	22.6%	2.6%	54	65	20.4%	2.5%
TAP Air Portugal	56	50	-10.7%	2.0%	57	50	-12.3%	1.9%
Brussels Airlines	59	41	-30.5%	1.6%	68	67	-1.5%	2.6%
Turkish Airlines	34	36	5.9%	1.4%	40	34	-15.0%	1.3%
SAS	44	34	-22.7%	1.4%	49	33	-32.7%	1.3%
Maj. foreign Carriers	1092	1134	3.8%	45.3%	1174	1185	0.9%	45.5%

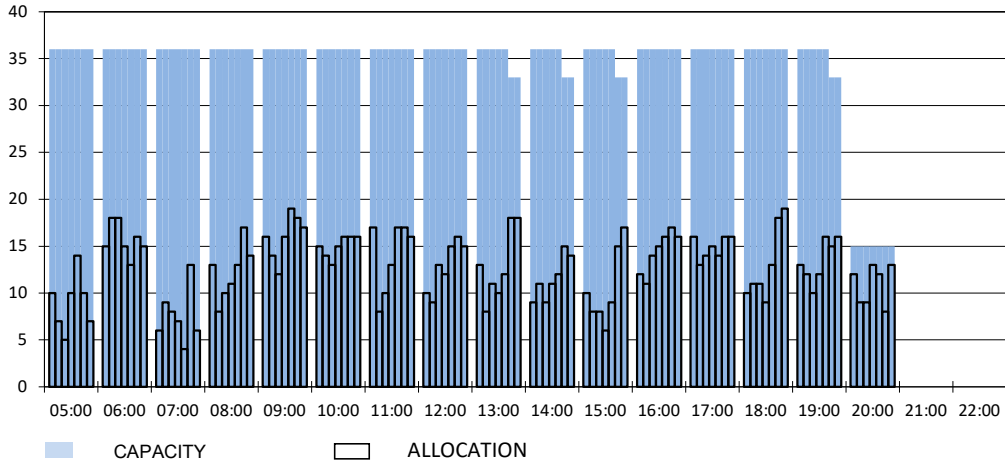
RUNWAY MOVEMENT START OF SEASON - ARRIVALS

Reference week, movements per hour - all times UTC



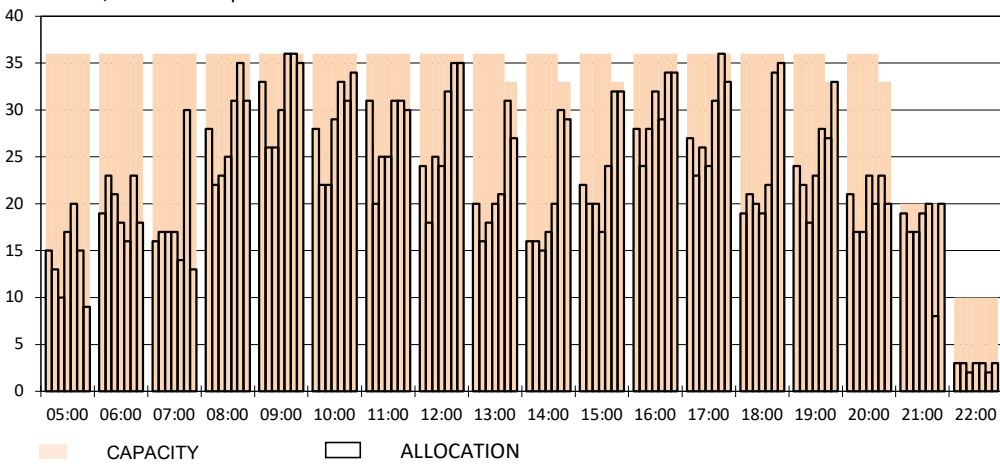
RUNWAY MOVEMENT START OF SEASON - DEPARTURES

Reference week, movements per hour - all times UTC



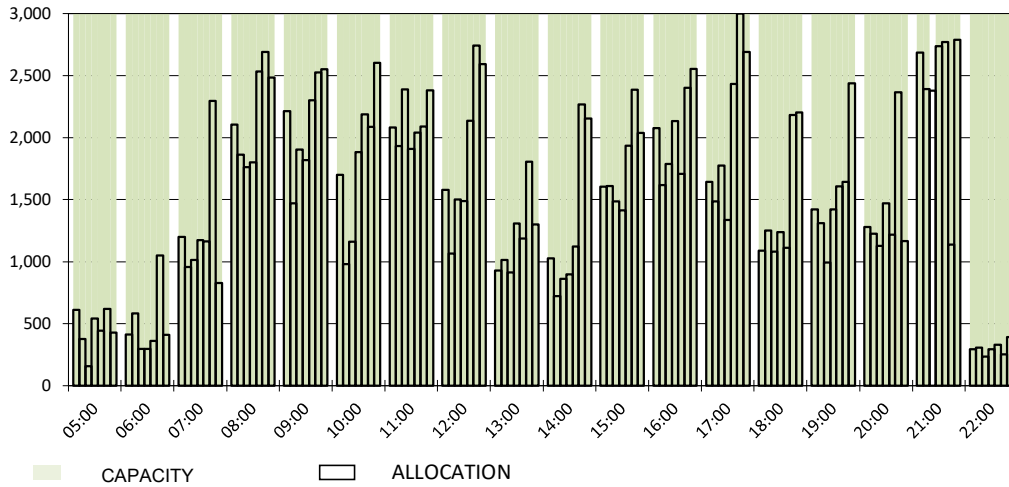
RUNWAY MOVEMENT START OF SEASON - TOTALS

Reference week, movements per hour - all times UTC



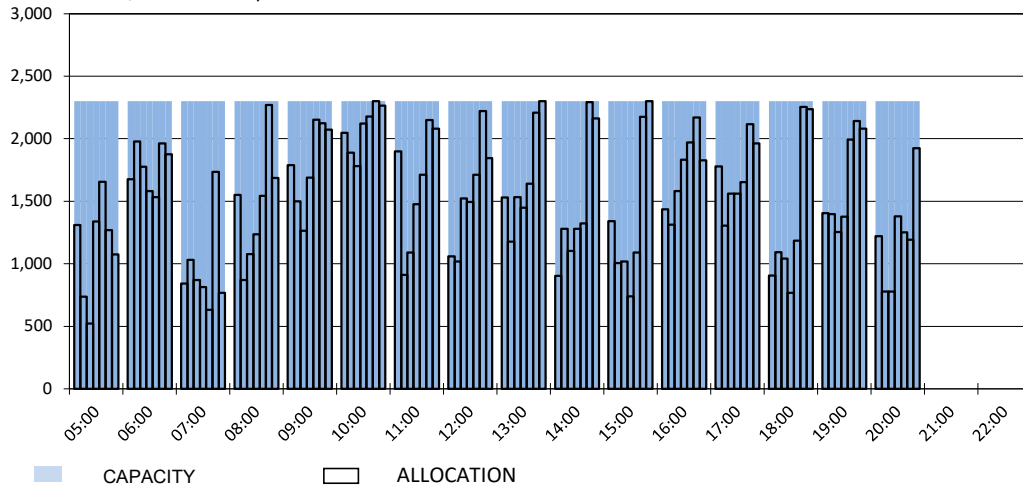
MAIN TERMINAL START OF SEASON - ARRIVALS

Reference week, movements per hour - all times UTC



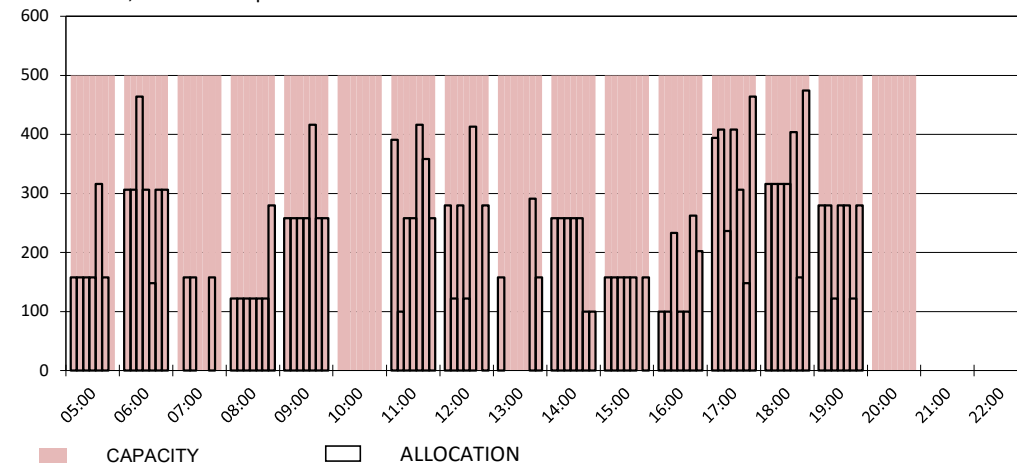
MAIN TERMINAL START OF SEASON - DEPARTURES

Reference week, movements per hour - all times UTC

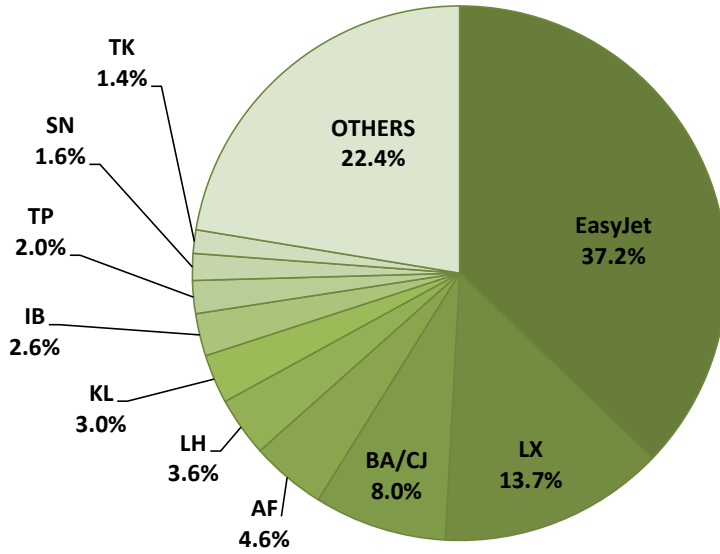


FRENCH SECTOR TERMINAL START OF SEASON - DEPARTURES

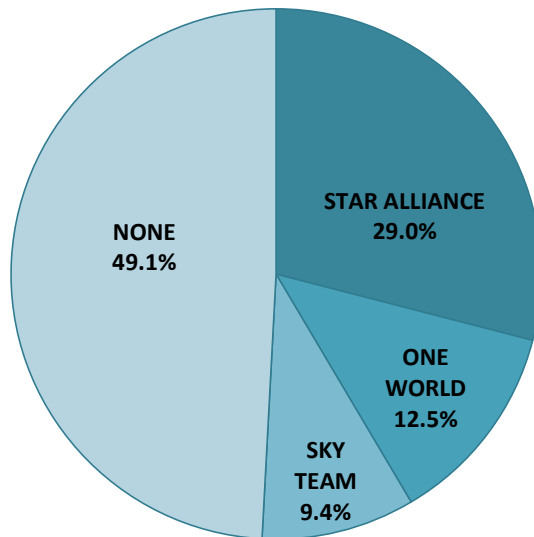
Reference week, movements per hour - all times UTC



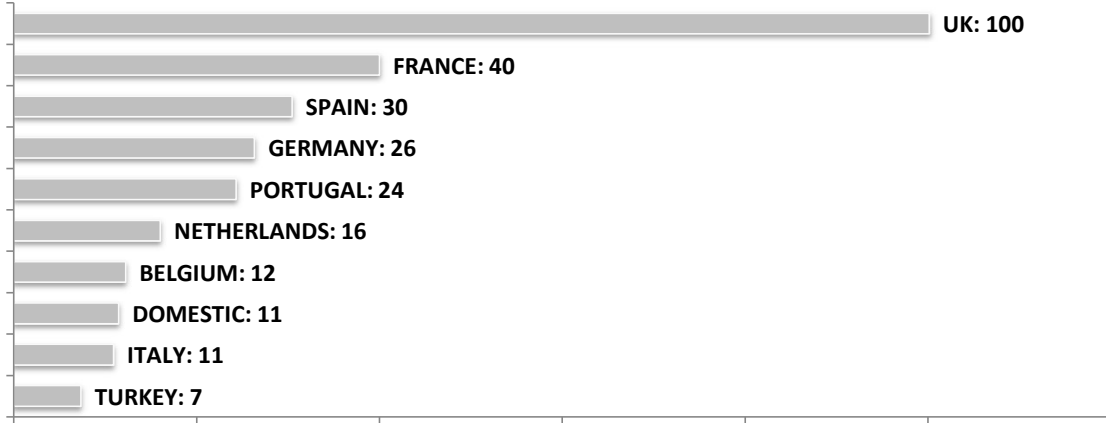
SEASONAL SLOT SHARE - 10 TOP CARRIER



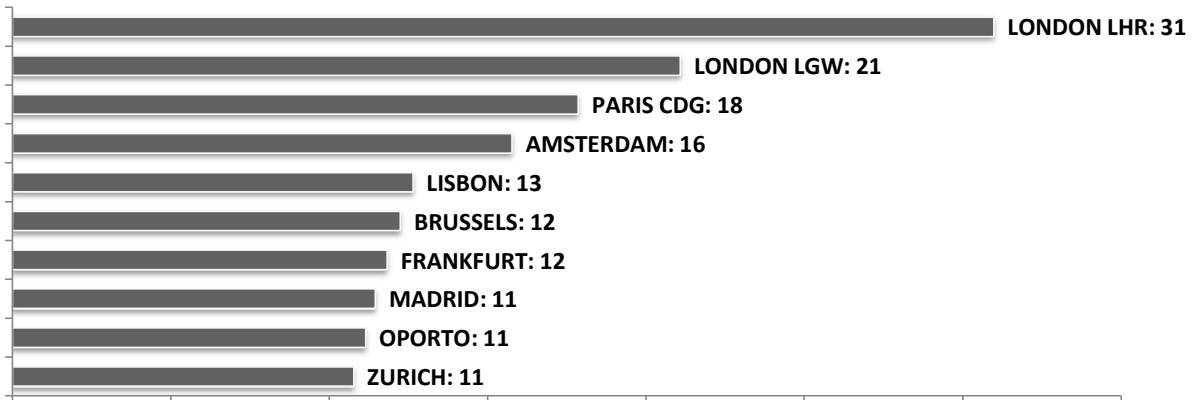
SEASONAL SLOT SHARE - PER ALLIANCES



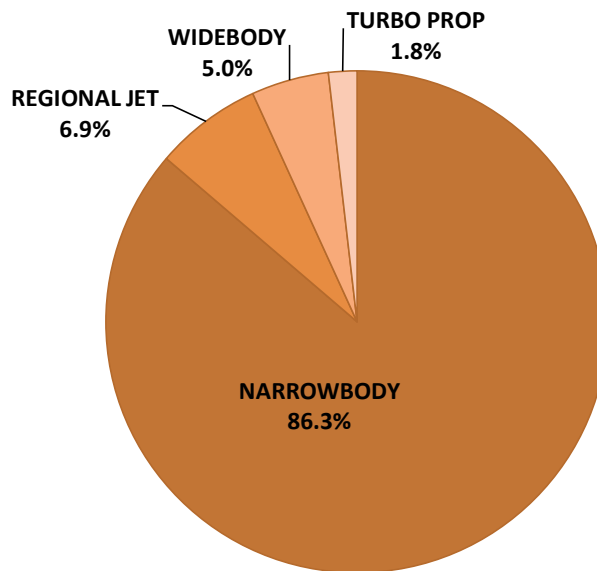
TOP 10 COUNTRIES - Number of Daily Slots



TOP 10 ROUTES - Number of Daily Slots



AIRCRAFT UTILISATION



Aircraft Sizes e.g. A330, A340, B777
 Widebody e.g. A220, A32S, B737
 Narrowbody e.g. CRJ, ERJ
 Regional Jet e.g. ATR, DH4