

## START OF SEASON REPORT ZURICH WINTER SEASON

30 OCTOBER 2022 - 25 MARCH 2023 (W22)

# 2022

KEY FIGURES	W21	W22	+/-
Cleared Airport Slots	65,623	<b>74,128</b>	13.0%
Seats offered (1000)	11,656	<b>12,954</b>	11.1%
Seats per Airport Slot	178	<b>175</b>	-1.6%
Runway Utilisation	42.1%	<b>47.6%</b>	5.5%
Number of Carriers	53	<b>52</b>	-1

### TABLE OF CONTENTS

### Page

Overview Main Carriers	2
Runway Histograms	3,4
Slot Shares	5
Traffic Flows, Aircraft Utilisation	6

### GLOSSARY OF TERMS

<b>Allocation</b>	The allocation of slots within declared capacity limits.
<b>Capacity Limits</b>	Limiting parameters declared by the Airport Operator used in the coordination process.
<b>Seats</b>	The number of seats based on the aircraft configuration advised by the airline.

### GUIDE TO HISTOGRAMS

The histograms show the pattern of traffic by time of day against the appropriate capacity limit. Each time period consists of seven columns representing the days-of-week, Monday through Sunday. All histograms are based on a reference week. For Winter 2022 the reference week is 13-19 February 2023.

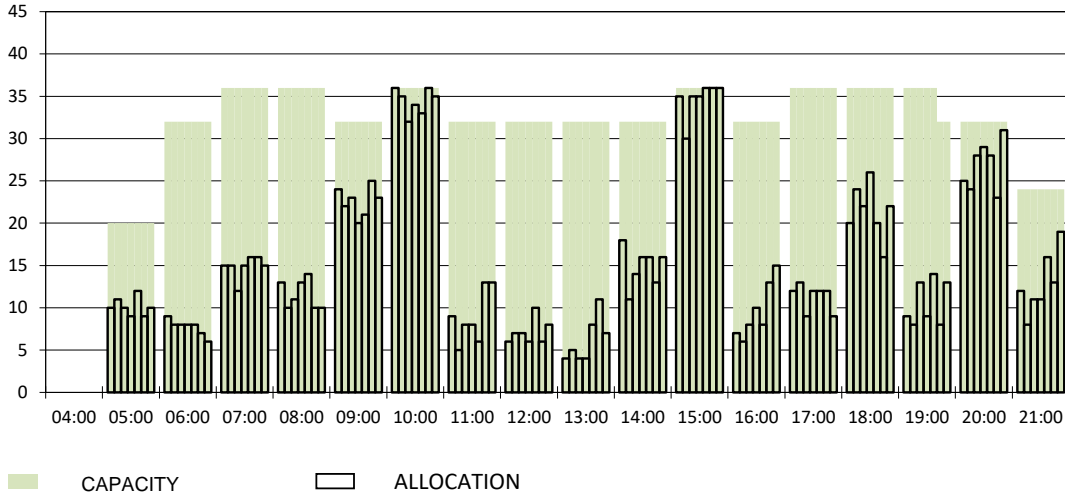
## OVERVIEW MAIN CARRIERS

Number of average slots per week

	START OF SEASON				SLOT RETURN			
	W21	W22	+/-	Share	W21	W22	+/-	Share
<b>ALL CARRIERS</b>	3125	3530	13.0%		2811	3660	30.2%	
<b>Swiss Carriers</b>	1858	2161	16.3%	61.2%	1394	2293	64.5%	62.7%
<i>where of</i>								
Swiss International Air Lines	1579	1872	18.6%	53.0%	1154	1993	72.7%	54.5%
Edelweiss Air	221	224	1.4%	6.3%	182	234	28.6%	6.4%
Chair Airlines	55	62	12.7%	1.8%	58	64	10.3%	1.7%
Helvetic	3	3	0.0%	0.1%	0	2		0.1%
<b>Foreign Carriers</b>	1267	1369	8.1%	38.8%	1417	1367	-3.5%	37.3%
<i>where of</i>								
Lufthansa	106	144	35.8%	4.1%	117	143	22.2%	3.9%
British Airways, BACF	113	117	3.5%	3.3%	133	117	-12.0%	3.2%
Austrian Airlines	42	94	123.8%	2.7%	42	52	23.8%	1.4%
Eurowings	90	84	-6.7%	2.4%	85	83	-2.4%	2.3%
KLM	73	73	0.0%	2.1%	82	82	0.0%	2.2%
Easyjet	55	69	25.5%	2.0%	59	67	13.6%	1.8%
Turkish Airlines	59	61	3.4%	1.7%	58	62	6.9%	1.7%
SAS	55	52	-5.5%	1.5%	61	52	-14.8%	1.4%
TAP Air Portugal	58	48	-17.2%	1.4%	58	48	-17.2%	1.3%
Iberia	42	42	0.0%	1.2%	42	42	0.0%	1.1%
<b>Maj. foreign Carriers</b>	693	784	13.1%	22.2%	737	748	1.5%	20.4%

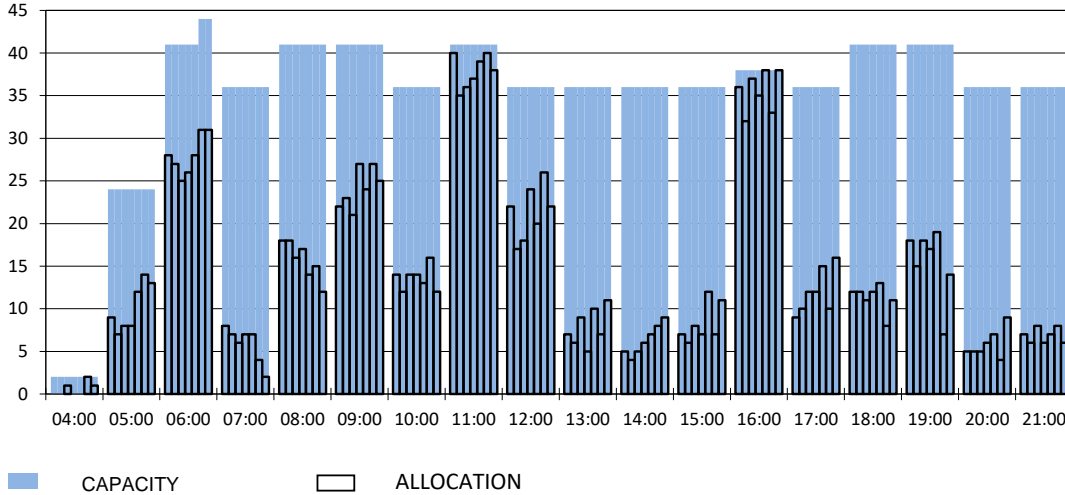
### RUNWAY MOVEMENT START OF SEASON - ARRIVALS

Reference week, movements per hour - all times UTC



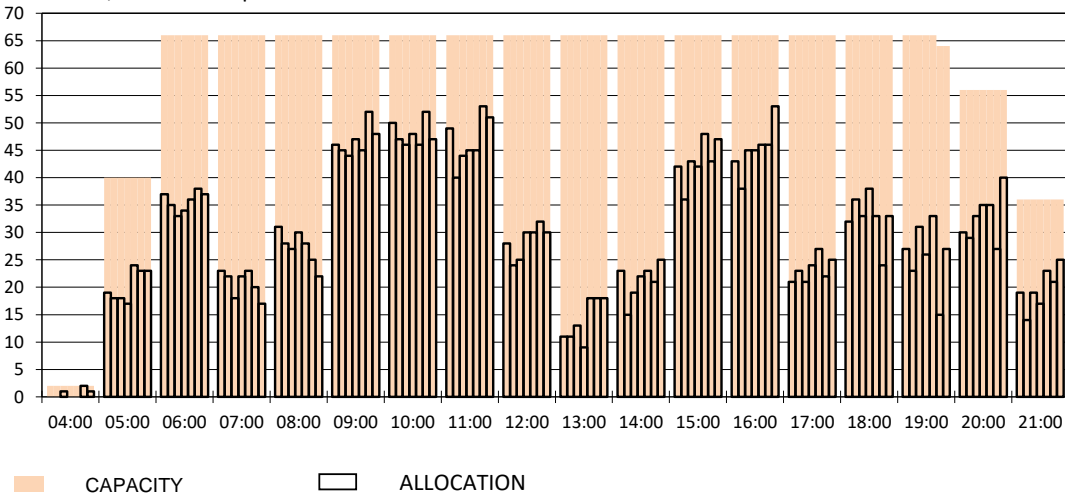
### RUNWAY MOVEMENT START OF SEASON - DEPARTURES

Reference week, movements per hour - all times UTC



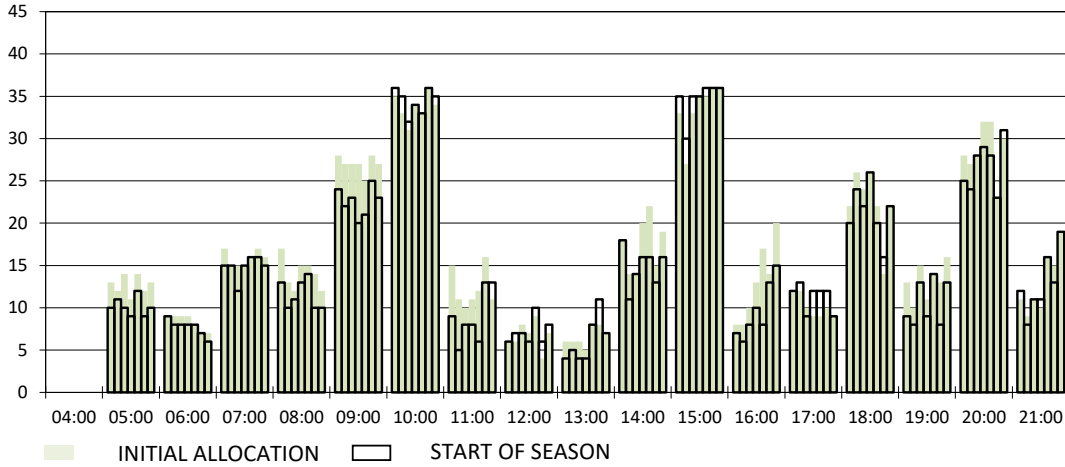
### RUNWAY MOVEMENT START OF SEASON - TOTALS

Reference week, movements per hour - all times UTC



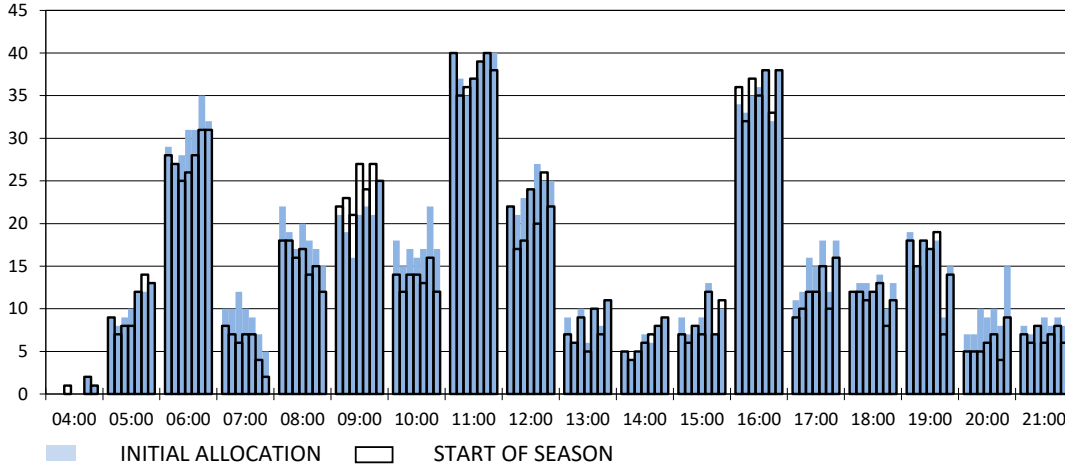
**RUNWAY MOVEMENT DEVELOPMENT INITIAL ALLOCATION TO START OF SEASON - ARRIVALS**

Reference week, movements per hour - all times UTC



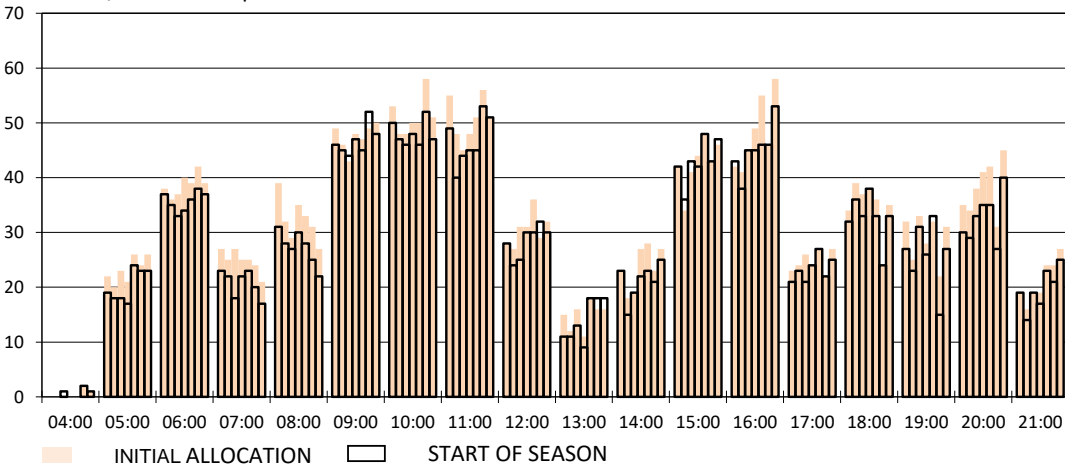
**RUNWAY MOVEMENT DEVELOPMENT INITIAL ALLOCATION TO START OF SEASON - DEPARTURES**

Reference week, movements per hour - all times UTC

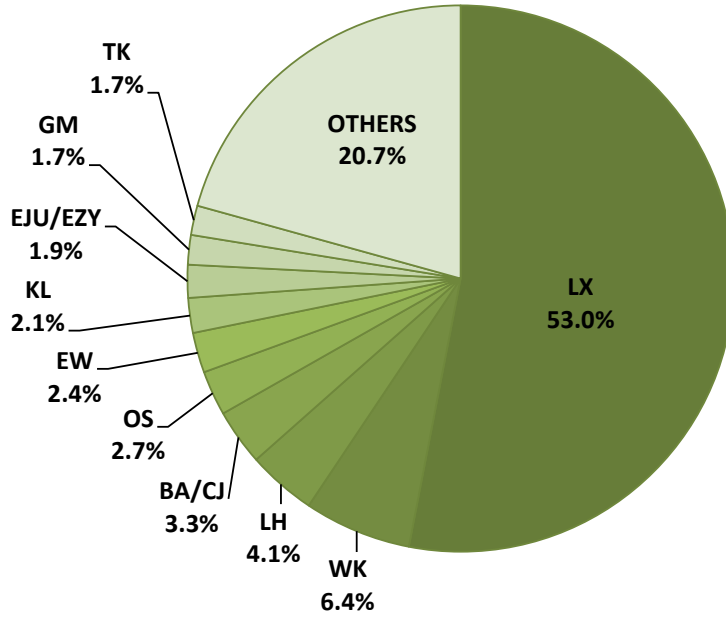


**RUNWAY MOVEMENT DEVELOPMENT INITIAL ALLOCATION TO START OF SEASON - TOTALS**

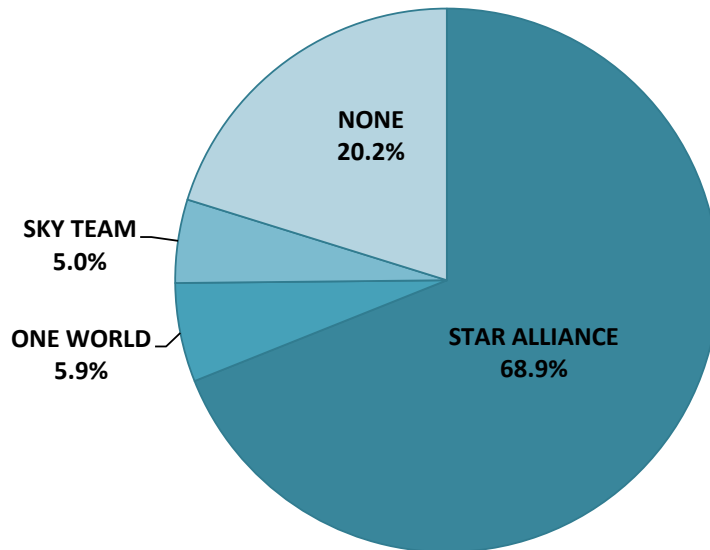
Reference week, movements per hour - all times UTC



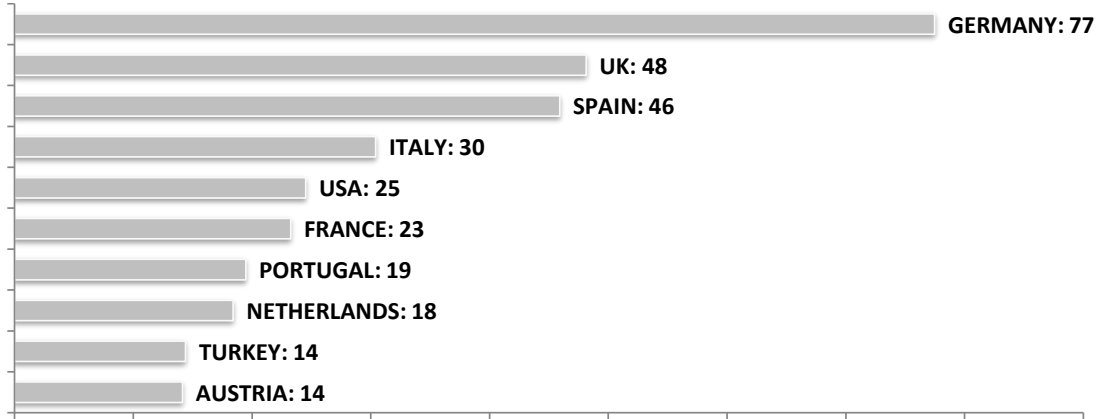
### SEASONAL SLOT SHARE - 10 TOP CARRIER



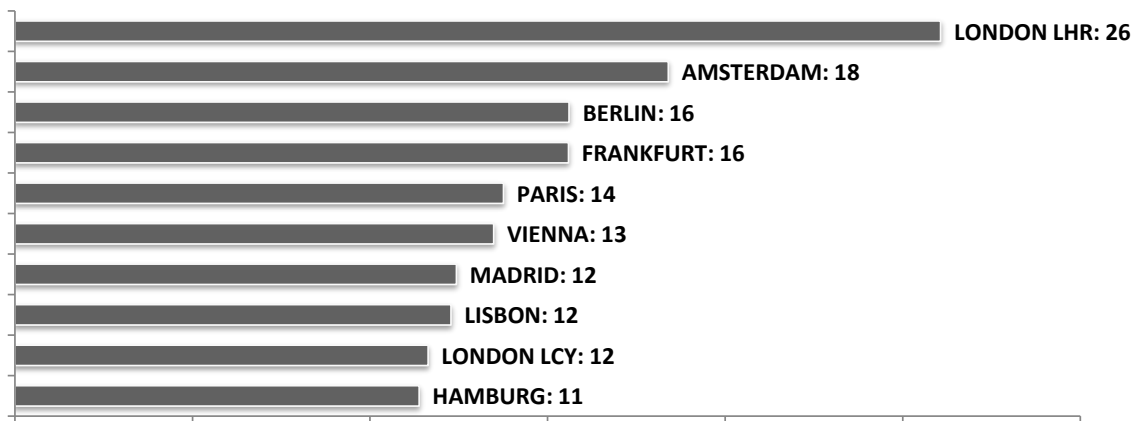
### SEASONAL SLOT SHARE - PER ALLIANCES



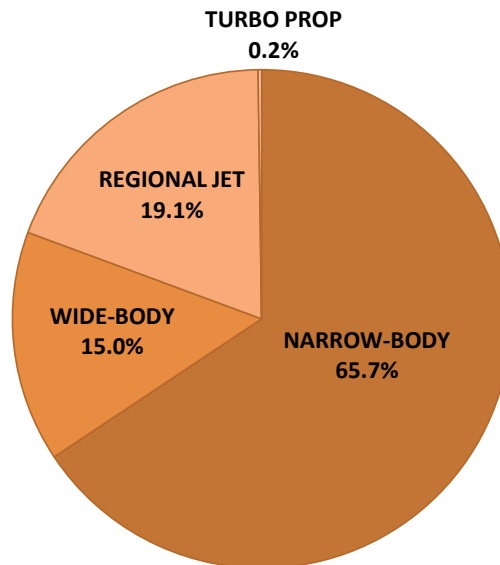
**TOP 10 COUNTRIES - Number of Daily Slots**



**TOP 10 ROUTES - Number of Daily Slots**



**AIRCRAFT UTILISATION**



- Aircraft Sizes**
- Widebody e.g. A330, B767, B777
  - Narrowbody e.g. A220, A32S, B737
  - Regional Jet e.g. CRJ, EMJ
  - Turbo Prop e.g. ATR, DH4