

## START OF SEASON REPORT GENEVA SUMMER SEASON

26 MARCH - 28 OCTOBER 2023 (S23)

# 2023

KEY FIGURES	S22	S23	+/-
Airport Slots	82,312	<b>81,640</b>	-0.8%
Seats offered (1000)	14,012	<b>13,959</b>	-0.4%
Seats per Airport Slot	170	<b>171</b>	0.6%
Runway Utilisation	62.6%	<b>62.1%</b>	-0.5%
Number of Carriers	57	<b>60</b>	+3

### TABLE OF CONTENTS

	Page
Management Summary	2
Overview Main Carriers	3
Runway Histograms	4
Terminal Histograms	5
Slot Shares	6
Traffic Flows, Aircraft Utilisation	7

### GLOSSARY OF TERMS

<b>Allocation</b>	The allocation of slots within declared capacity limits.
<b>Capacity Limits</b>	Limiting parameters declared by the Airport Operator used in the coordination process.
<b>Seats</b>	The number of seats based on the aircraft configuration advised by the airline.

### GUIDE TO HISTOGRAMS

The histograms show the pattern of traffic by time of day against the appropriate capacity limit. Each time period consists of seven columns representing the days-of-week, Monday through Sunday. All histograms are based on a reference week.

For Summer 2023 the reference week is 11-17 September 2023.

## MANAGEMENT SUMMARY

### INTRODUCTION

*This seasonal report represents the planned operations at Geneva Airport for the summer 2023 scheduling season which extends for 31 weeks from 26 March to 28 October 2023.*

*The following is a summary of the most significant changes between slot return and start of season summer 2023:*

### NEW SERVICES

→ AIR MAURITIUS	MRU	days 1/5
→ GULFAIR	BAH/MXP	days 2/5
→ PAN EUROPEENNE	TTU	day 6

### DISCONTINUED SERVICES

- 
- 

### FULLY RETURNED SERVICES

- 

### REDUCED SERVICES

- 
-

## OVERVIEW MAIN CARRIERS

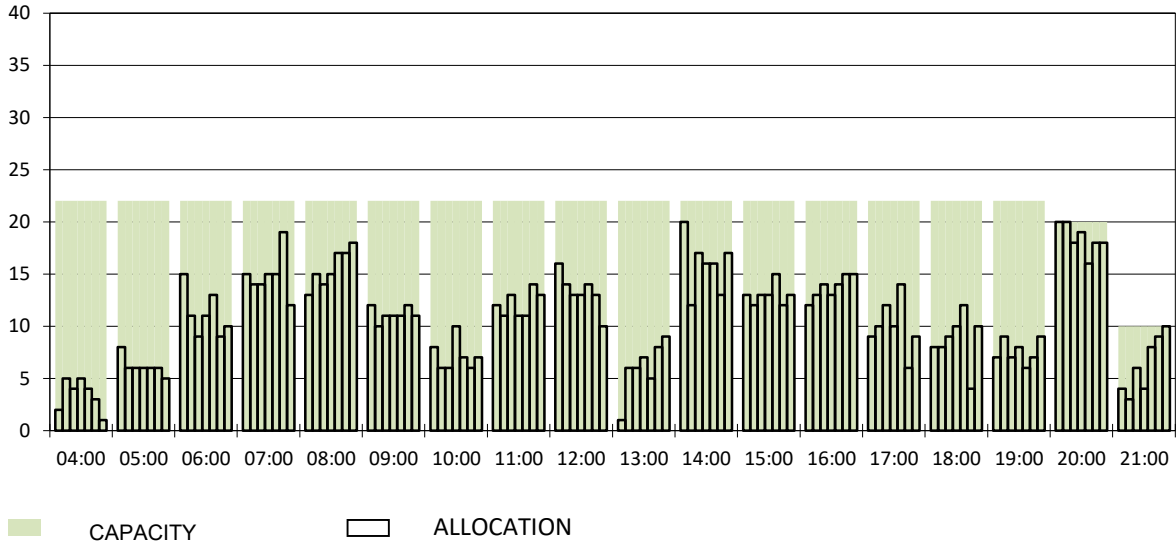
Number of average slots per week

	START OF SEASON			
	S22	S23	+/-	Share
<b>ALL CARRIERS</b>	2655	2634	-0.8%	
<b>Swiss Carriers</b>	1087	1094	0.6%	41.5%
<i>where of</i>				
EasyJet Switzerland	681	669	-1.8%	25.4%
Swiss International Air Lines	406	425	4.7%	16.1%
<b>Foreign Carriers</b>	1568	1540	-1.8%	58.5%
<i>where of</i>				
EasyJet Europe & UK	386	360	-6.7%	13.7%
Air France	115	113	-1.7%	4.3%
Lufthansa	96	109	13.5%	4.1%
British Airways / BA Cityflyer	111	97	-12.6%	3.7%
KLM	76	82	7.9%	3.1%
Iberia	65	73	12.3%	2.8%
TAP Air Portugal	48	52	8.3%	2.0%
Turkish Airlines	54	51	-5.6%	1.9%
Brussels Airlines	38	38	0.0%	1.4%
<b>Maj. foreign Carriers</b>	989	975	-1.4%	37.0%

SLOT RETURN			
S22	S23	+/-	Share
2721	2710	-0.4%	
1097	1151	4.9%	42.5%
686	676	-1.5%	24.9%
411	475	15.6%	17.5%
1624	1559	-4.0%	57.5%
394	372	-5.6%	13.7%
115	113	-1.7%	4.2%
98	112	14.3%	4.1%
112	100	-10.7%	3.7%
84	84	0.0%	3.1%
66	73	10.6%	2.7%
49	52	6.1%	1.9%
54	49	-9.3%	1.8%
38	39	2.6%	1.4%
1010	994	-1.6%	36.7%

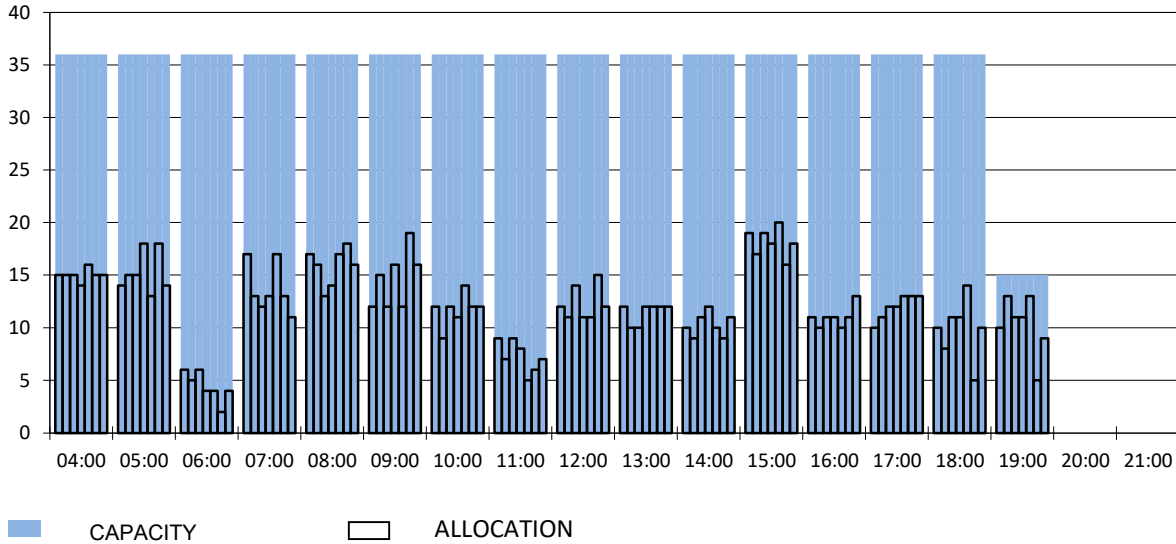
### RUNWAY START OF SEASON - ARRIVALS

Reference week, movements per hour - all times UTC



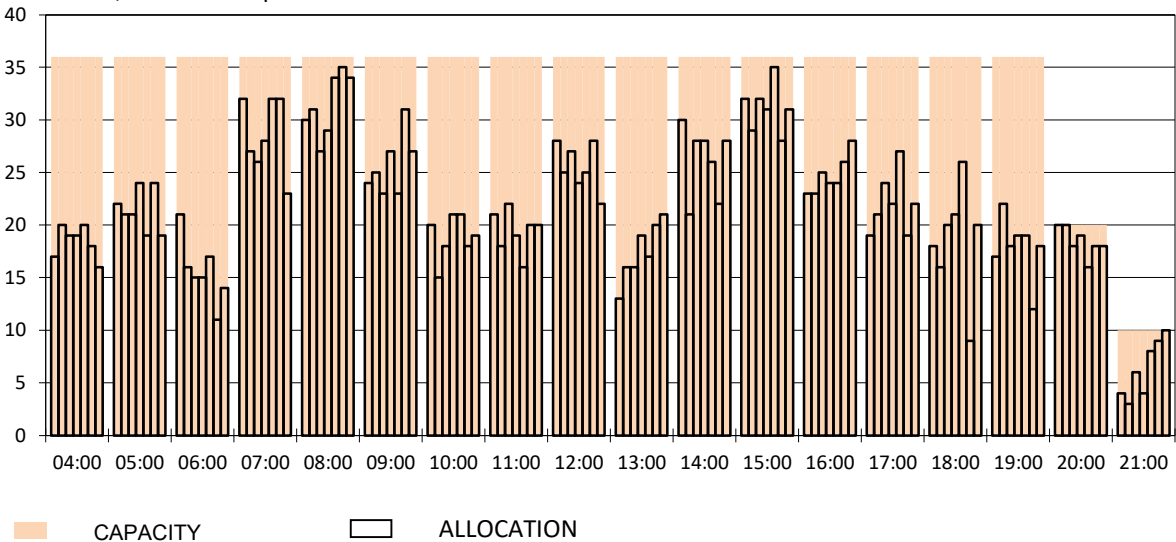
### RUNWAY MOVEMENT START OF SEASON - DEPARTURES

Reference week, movements per hour - all times UTC



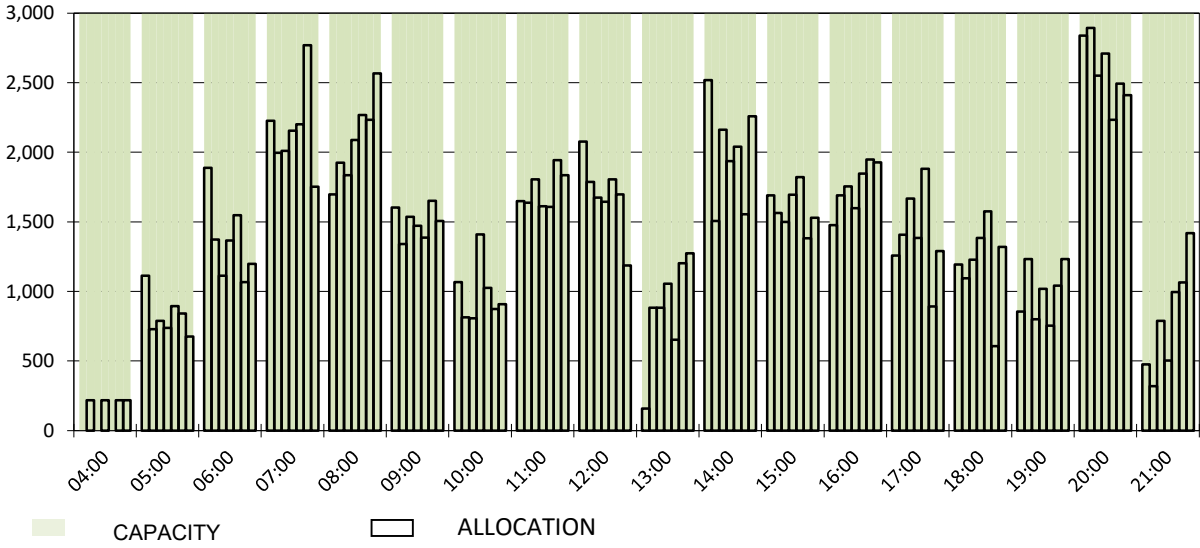
### RUNWAY MOVEMENT START OF SEASON - TOTALS

Reference week, movements per hour - all times UTC



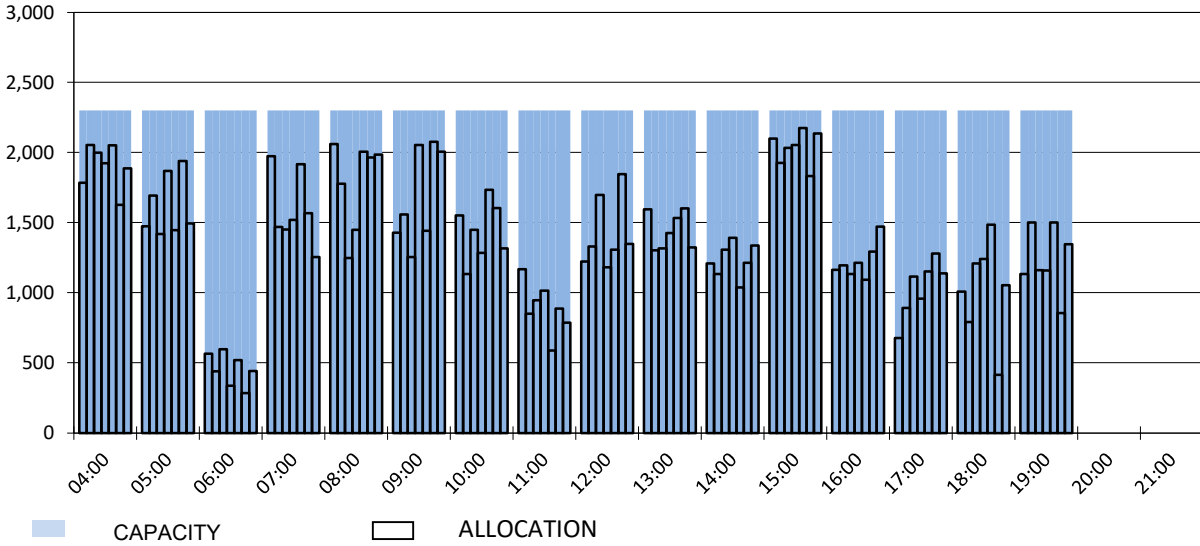
### MAIN TERMINAL START OF SEASON - ARRIVALS

Reference week, passengers per hour - all times UTC



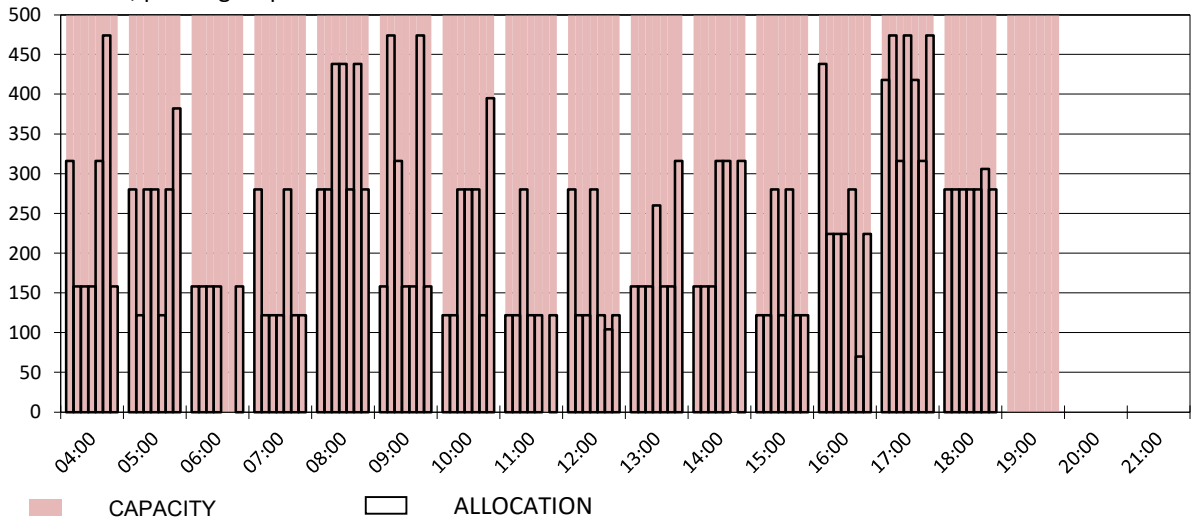
### MAIN TERMINAL START OF SEASON - DEPARTURES

Reference week, passengers per hour - all times UTC

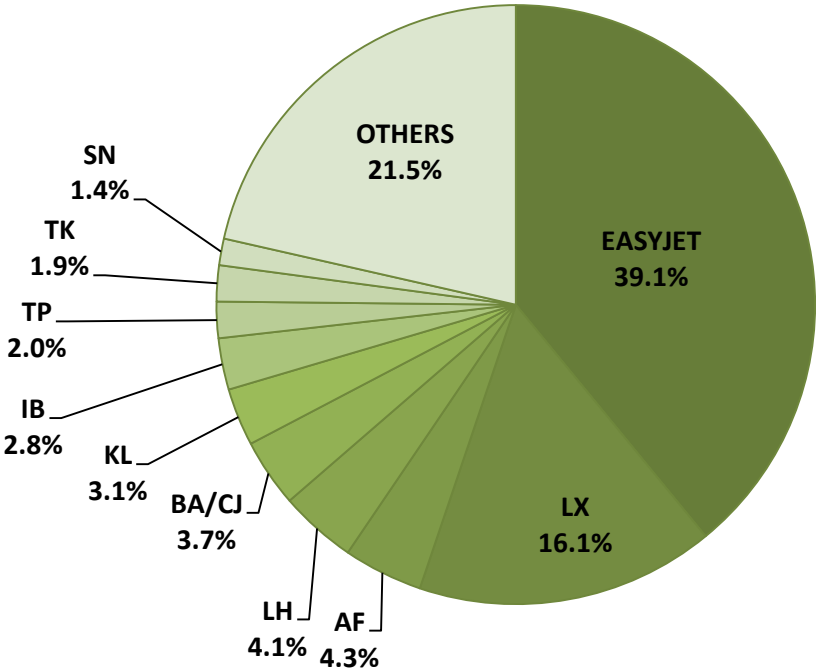


### FRENCH SECTOR TERMINAL START OF SEASON - DEPARTURES

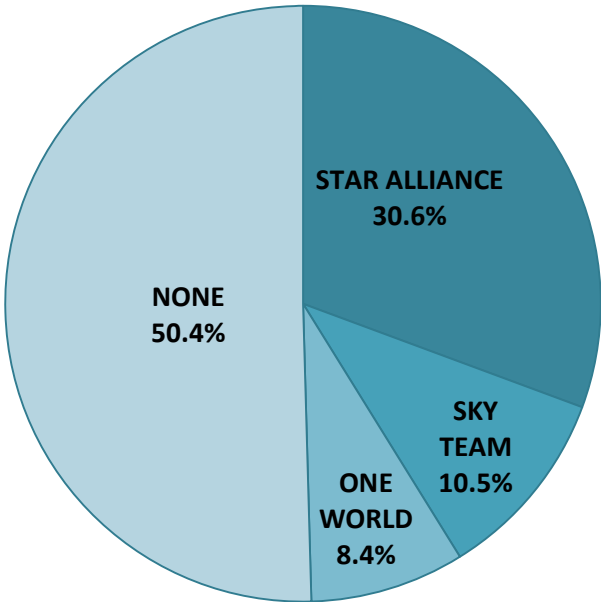
Reference week, passengers per hour - all times UTC



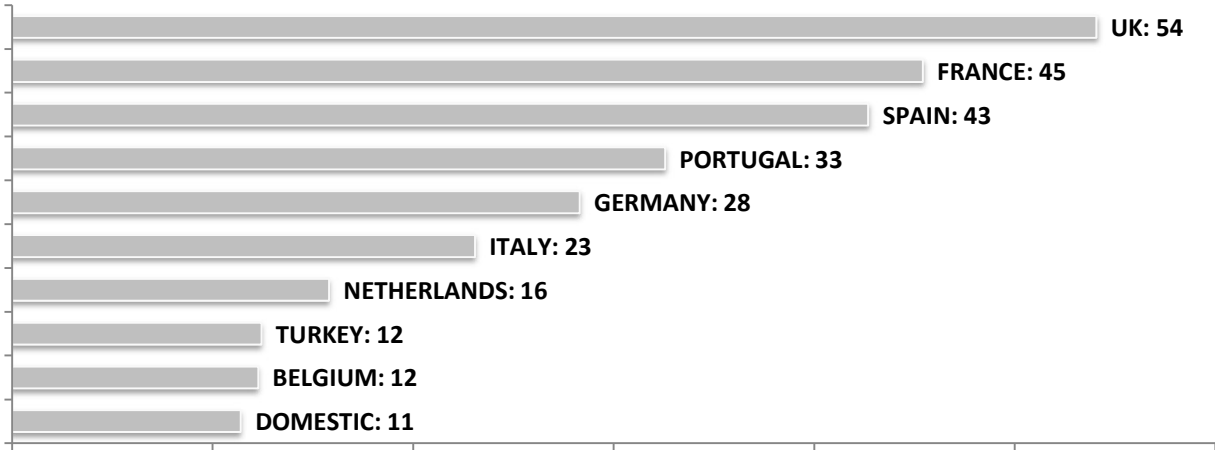
**SEASONAL SLOT SHARE - 10 TOP CARRIER**



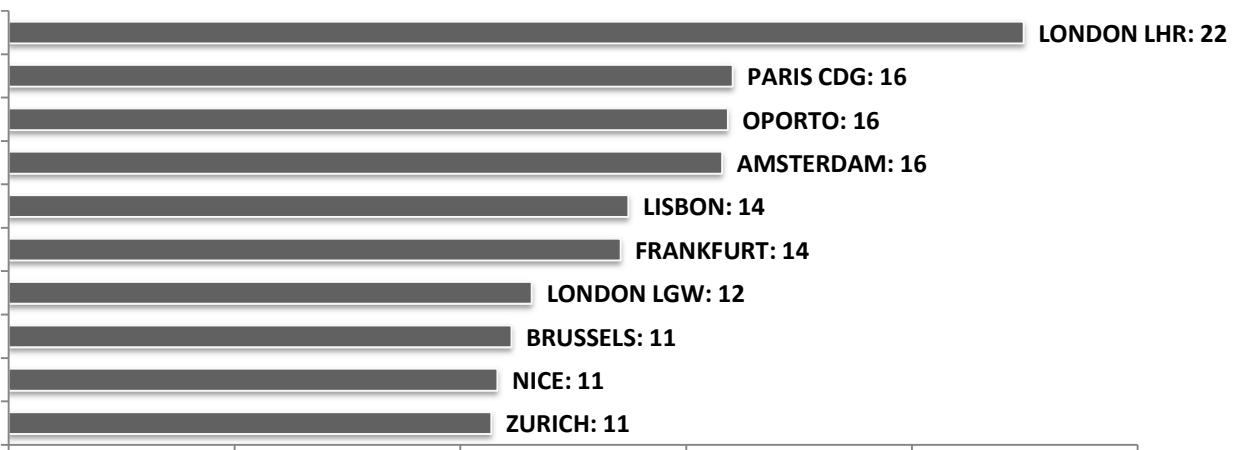
**SEASONAL SLOT SHARE - PER ALLIANCES**



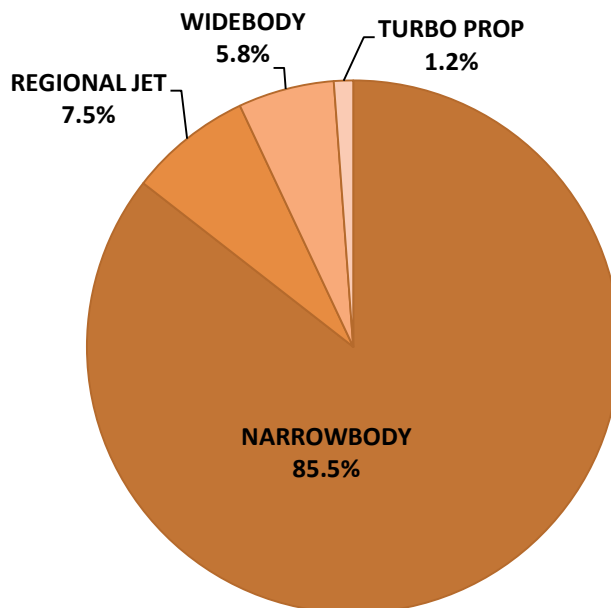
**TOP 10 COUNTRIES - Number of Daily Slots**



**TOP 10 ROUTES - Number of Daily Slots**



**AIRCRAFT UTILISATION**



**Aircraft Sizes**

- Widebody e.g. A330, B767, B777
- Narrowbody e.g. A32S, B737, BCS
- Regional Jet e.g. CRJ, ERJ
- Turbo Prop e.g. ATR, DH4