

START OF SEASON REPORT ZURICH SUMMER SEASON

26 MARCH - 28 OCTOBER 2023 (S23)

2023

KEY FIGURES	S22	S23	+/-
Cleared Airport Slots	133,354	142,063	6.5%
Seats offered (1000)	23,282	24,686	6.0%
Seats per Airport Slot	175	174	-0.5%
Runway Utilisation	58.0%	61.8%	3.8%
Number of Carriers	69	75	+6

TABLE OF CONTENTS

	Page
Overview Main Carriers	2
Runway Histograms	3,4
Slot Shares	5
Traffic Flows, Aircraft Utilisation	6

GLOSSARY OF TERMS

Allocation	The allocation of slots within declared capacity limits.
Capacity Limits	Limiting parameters declared by the Airport Operator used in the coordination process.
Seats	The number of seats based on the aircraft configuration advised by the airline.

GUIDE TO HISTOGRAMS

The histograms show the pattern of traffic by time of day against the appropriate capacity limit. Each time period consists of seven columns representing the days-of-week, Monday through Sunday. All histograms are based on a reference week. For Summer 2023 the reference week is 11 -17 September 2023.

OVERVIEW MAIN CARRIERS

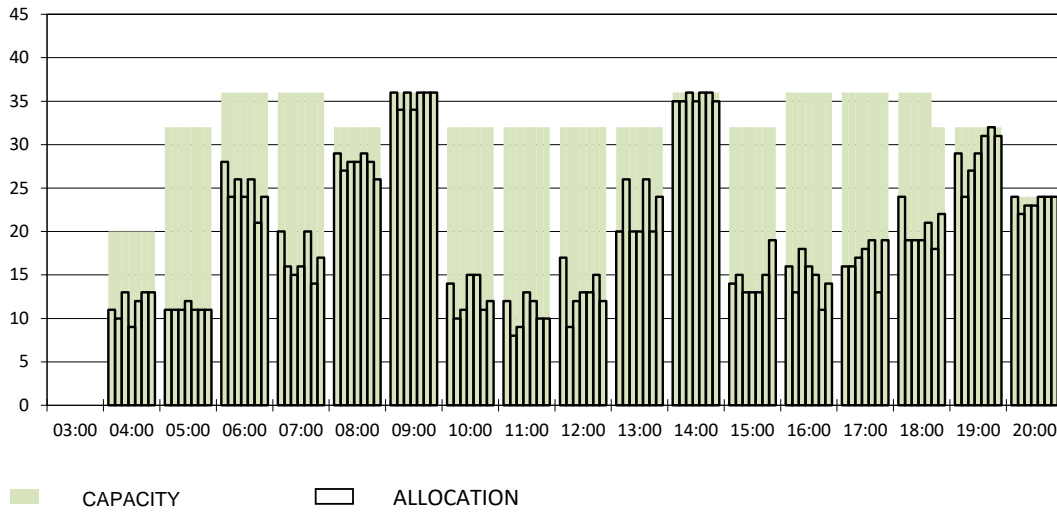
Number of average slots per week

	START OF SEASON			
	S22	S23	+/-	Share
ALL CARRIERS	4302	4583	6.5%	
Swiss Carriers	2733	2929	7.2%	63.9%
<i>where of</i>				
Swiss International Air Lines	2173	2382	9.6%	52.0%
Edelweiss Air	402	428	6.5%	9.3%
Chair Airlines	141	109	-22.7%	2.4%
Helvetic	17	10	-41.2%	0.2%
Foreign Carriers	1569	1654	5.4%	36.1%
<i>where of</i>				
Lufthansa	137	139	1.5%	3.0%
Eurowings	103	110	6.8%	2.4%
Austrian Airlines	59	102	72.9%	2.2%
British Airways, BACF	100	92	-8.0%	2.0%
KLM	77	81	5.2%	1.8%
Easyjet	56	73	30.4%	1.6%
Turkish Airlines	84	72	-14.3%	1.6%
Vueling	48	61	27.1%	1.3%
SunExpress	46	57	23.9%	1.2%
United Airlines	52	53	1.9%	1.2%
Maj. foreign Carriers	762	840	10.2%	18.3%

SLOT RETURN			
S22	S23	+/-	Share
4361	4648	6.6%	
2736	2953	7.9%	63.5%
2175	2402	10.4%	51.7%
395	428	8.4%	9.2%
147	113	-23.1%	2.4%
19	10	-47.4%	0.2%
1625	1695	4.3%	36.5%
140	140	0.0%	3.0%
103	105	1.9%	2.3%
60	102	70.0%	2.2%
100	96	-4.0%	2.1%
82	82	0.0%	1.8%
57	73	28.1%	1.6%
86	80	-7.0%	1.7%
49	61	24.5%	1.3%
48	57	18.8%	1.2%
52	53	1.9%	1.1%
777	849	9.3%	18.3%

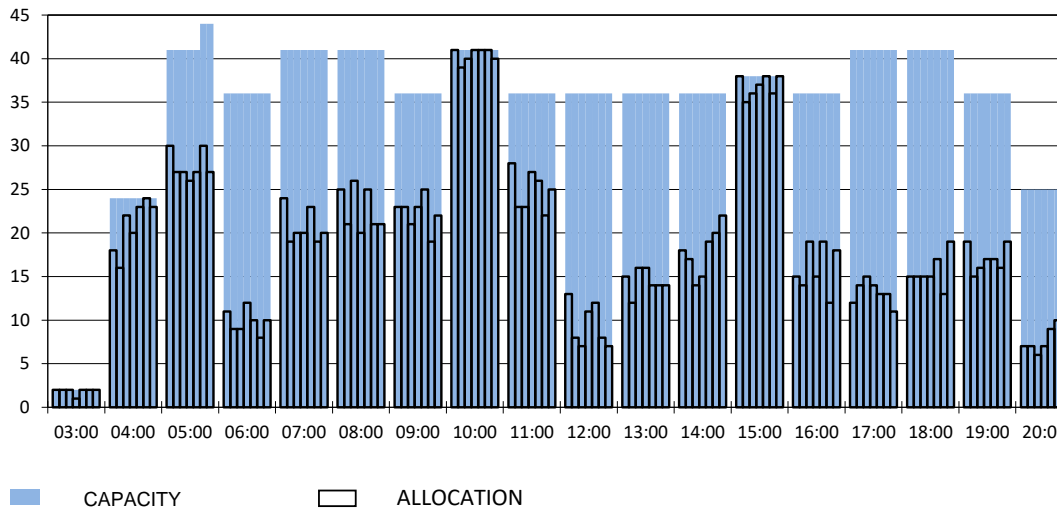
RUNWAY MOVEMENT START OF SEASON - ARRIVALS

Reference week, movements per hour - all times UTC



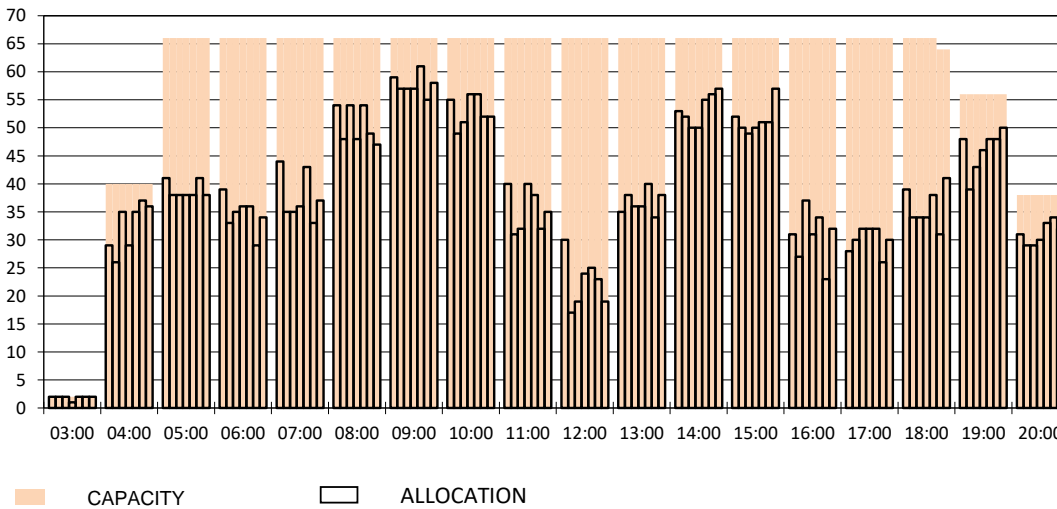
RUNWAY MOVEMENT START OF SEASON - DEPARTURES

Reference week, movements per hour - all times UTC



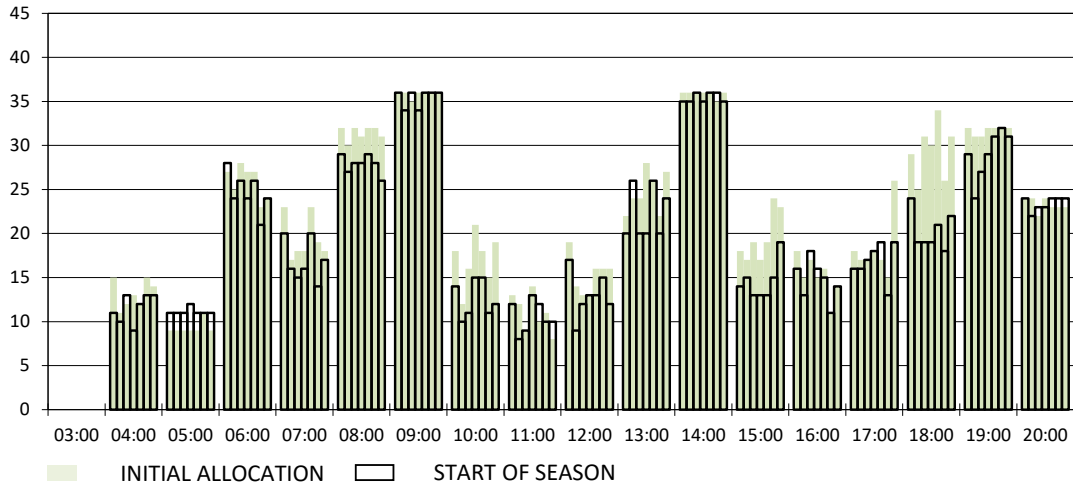
RUNWAY MOVEMENT START OF SEASON - TOTALS

Reference week, movements per hour - all times UTC



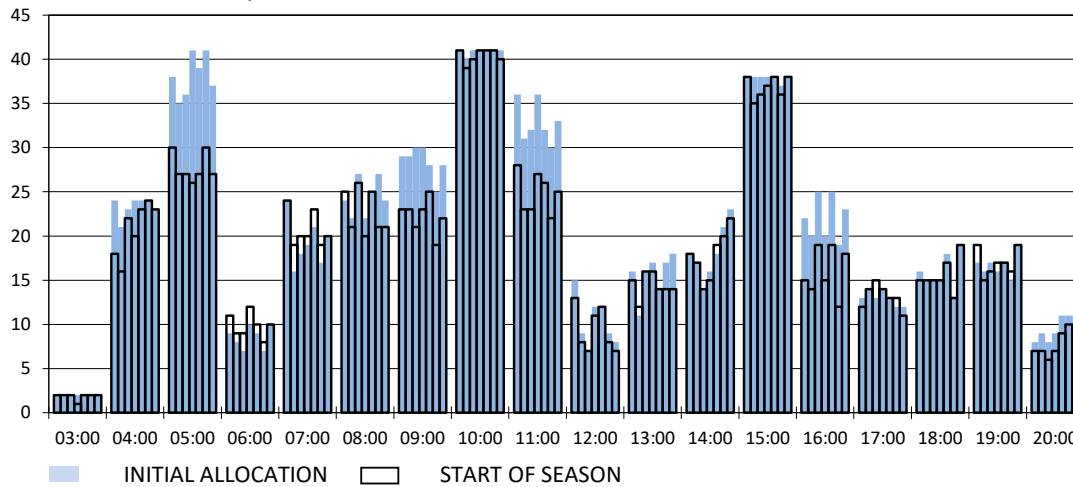
RUNWAY MOVEMENT DEVELOPMENT INITIAL ALLOCATION TO START OF SEASON - ARRIVALS

Reference week, movements per hour - all times UTC



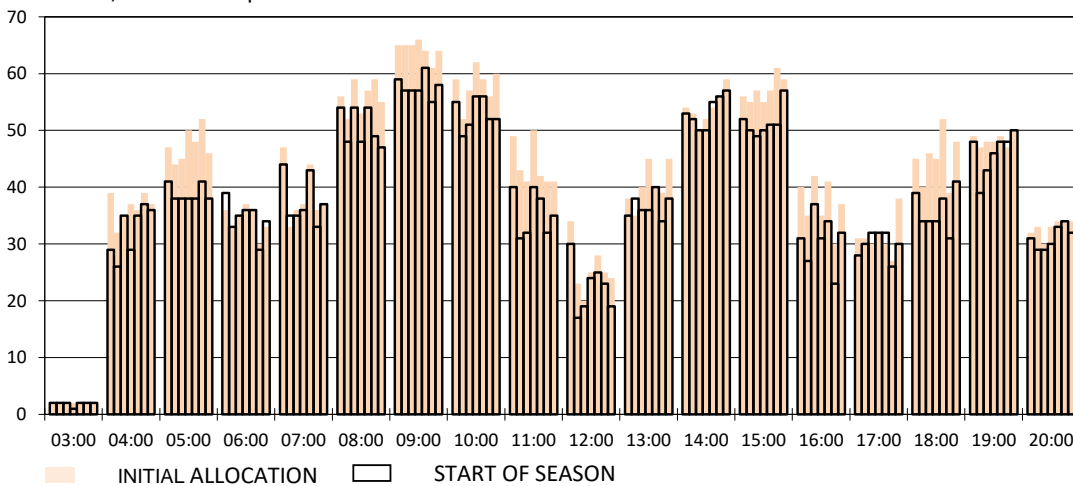
RUNWAY MOVEMENT DEVELOPMENT INITIAL ALLOCATION TO START OF SEASON - DEPARTURES

Reference week, movements per hour - all times UTC

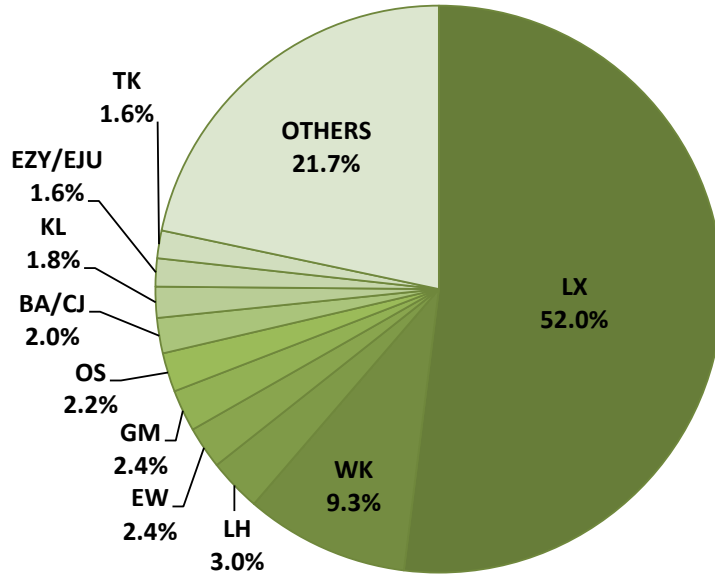


RUNWAY MOVEMENT DEVELOPMENT INITIAL ALLOCATION TO START OF SEASON - TOTALS

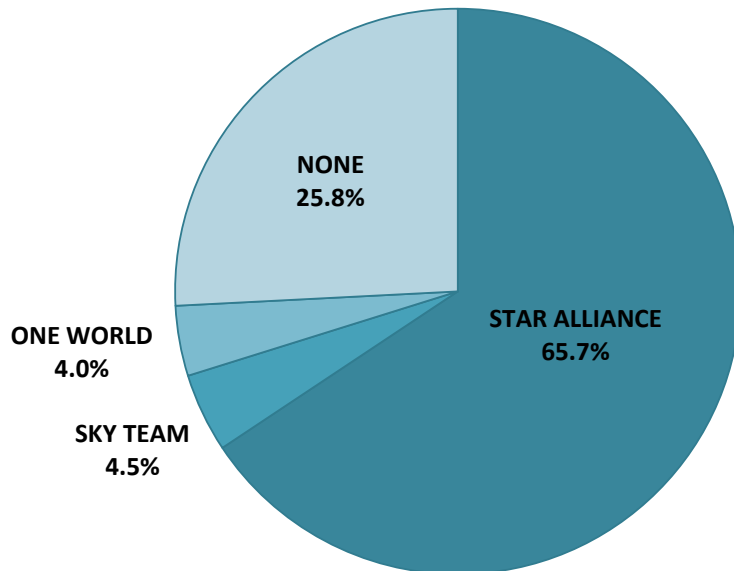
Reference week, movements per hour - all times UTC



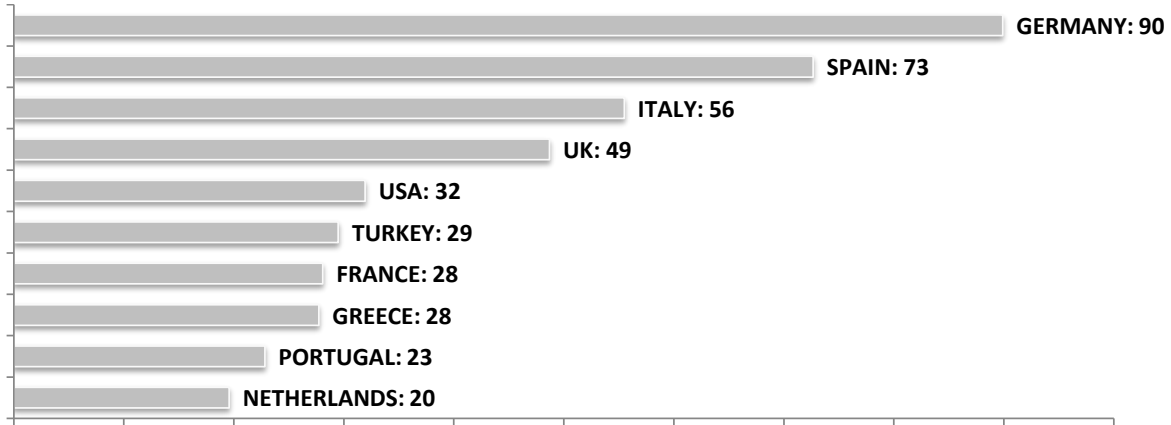
SEASONAL SLOT SHARE - 10 TOP CARRIER



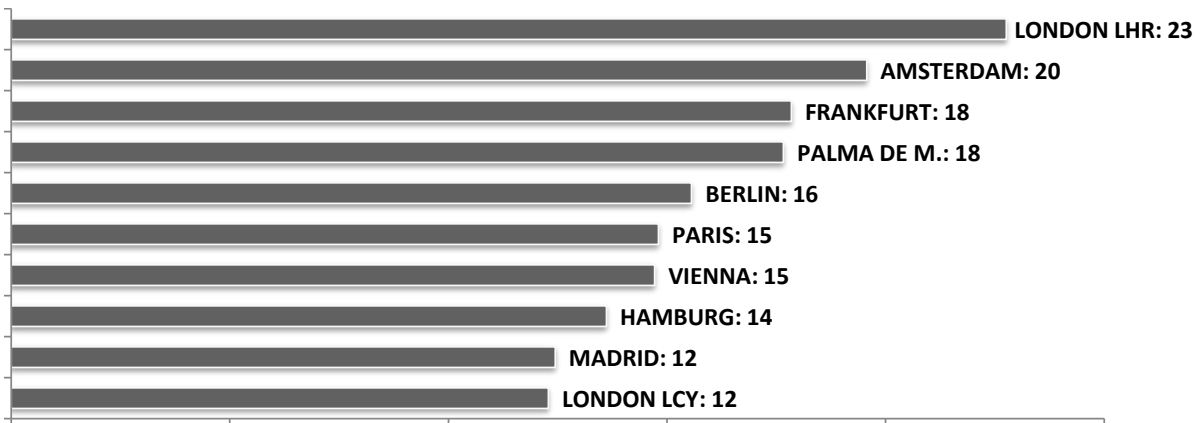
SEASONAL SLOT SHARE - PER ALLIANCES



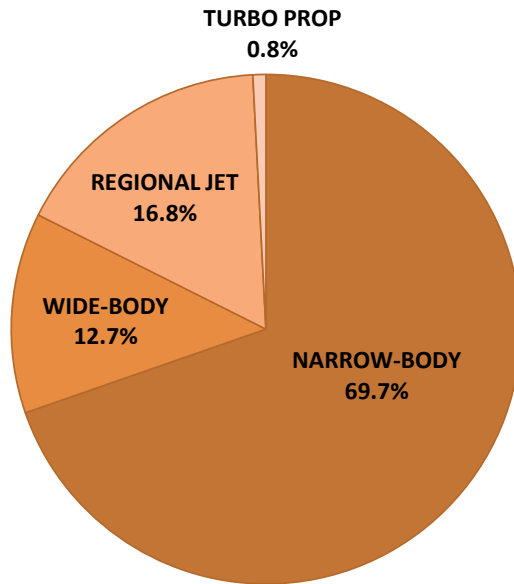
TOP 10 COUNTRIES - Number of Daily Slots



TOP 10 ROUTES - Number of Daily Slots



AIRCRAFT UTILISATION



Aircraft Sizes
 Widebody e.g. A330, A350, B777
 Narrowbody e.g. A220, A32S, B737
 Regional Jet e.g. CRJ, ERJ
 Turbo Prop e.g. ATR, DH4