

START OF SEASON REPORT ZURICH WINTER SEASON

29 OCTOBER 2023 - 30 MARCH 2024 (W23)

2023

| KEY FIGURES | W22 | W23 | +/- |
|------------------------|--------|---------------|-------|
| Cleared Airport Slots | 77,658 | 85,837 | 10.5% |
| Seats offered (1000) | 13,570 | 15,448 | 13.8% |
| Seats per Airport Slot | 175 | 180 | 3.0% |
| Runway Utilisation | 47.6% | 52.6% | 5.0% |
| Number of Carriers | 52 | 54 | +2 |

Note: For comparison reasons W22 figures (21 season weeks) are transposed to reflect W23's 22 season weeks!

| TABLE OF CONTENTS | Page |
|-------------------------------------|------|
| Overview Main Carriers | 2 |
| Runway Histograms | 3,4 |
| Slot Shares | 5 |
| Traffic Flows, Aircraft Utilisation | 6 |

GLOSSARY OF TERMS

| | |
|------------------------|--|
| Allocation | The allocation of slots within declared capacity limits. |
| Capacity Limits | Limiting parameters declared by the Airport Operator used in the coordination process. |
| Seats | The number of seats based on the aircraft configuration advised by the airline. |

GUIDE TO HISTOGRAMS

The histograms show the pattern of traffic by time of day against the appropriate capacity limit. Each time period consists of seven columns representing the days-of-week, Monday through Sunday. All histograms are based on a reference week. For Winter 2023 the reference week is 12-18 February 2024.

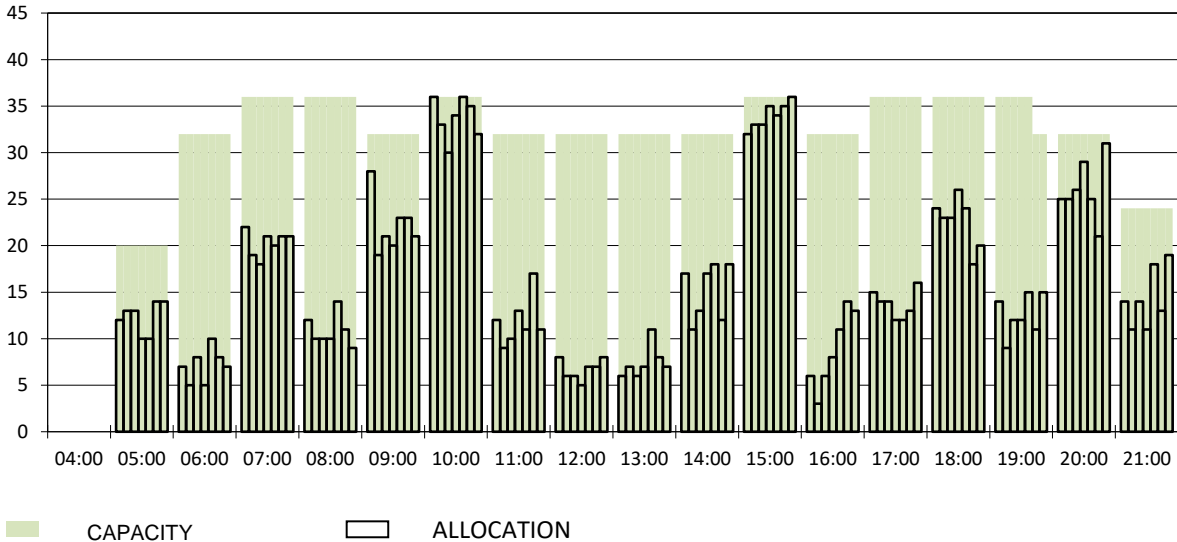
OVERVIEW MAIN CARRIERS

Number of average slots per week

| | START OF SEASON | | | | SLOT RETURN | | | |
|-------------------------------|-----------------|------|--------|-------|-------------|------|--------|-------|
| | W22 | W23 | +/- | Share | W22 | W23 | +/- | Share |
| ALL CARRIERS | 3530 | 3902 | 10.5% | | 3660 | 3917 | 7.0% | |
| Swiss Carriers | 2161 | 2497 | 15.5% | 64.0% | 2293 | 2500 | 9.0% | 63.8% |
| <i>where of</i> | | | | | | | | |
| Swiss International Air Lines | 1872 | 2167 | 15.8% | 55.5% | 1993 | 2174 | 9.1% | 55.5% |
| Edelweiss Air | 224 | 269 | 20.1% | 6.9% | 234 | 265 | 13.2% | 6.8% |
| Chair Airlines | 62 | 58 | -6.5% | 1.5% | 64 | 59 | -7.8% | 1.5% |
| Helvetic | 3 | 3 | 0.0% | 0.1% | 2 | 2 | | 0.1% |
| Foreign Carriers | 1369 | 1405 | 2.6% | 36.0% | 1367 | 1417 | 3.7% | 36.2% |
| Lufthansa | 144 | 123 | -14.6% | 3.2% | 143 | 123 | -14.0% | 3.1% |
| British Airways, BACF | 117 | 113 | -3.4% | 2.9% | 117 | 113 | -3.4% | 2.9% |
| Austrian Airlines | 84 | 91 | 8.3% | 2.3% | 83 | 93 | 12.0% | 2.4% |
| Eurowings | 73 | 82 | 12.3% | 2.1% | 82 | 82 | 0.0% | 2.1% |
| KLM | 69 | 76 | 10.1% | 1.9% | 67 | 73 | 9.0% | 1.9% |
| Easyjet | 61 | 68 | 11.5% | 1.7% | 62 | 68 | 9.7% | 1.7% |
| Turkish Airlines | 94 | 63 | -33.0% | 1.6% | 52 | 63 | 21.2% | 1.6% |
| SAS | 52 | 55 | 5.8% | 1.4% | 52 | 56 | 7.7% | 1.4% |
| TAP Air Portugal | 48 | 52 | 8.3% | 1.3% | 48 | 52 | 8.3% | 1.3% |
| Iberia | 39 | 45 | 15.4% | 1.2% | 42 | 45 | 7.1% | 1.1% |
| Maj. foreign Carriers | 781 | 768 | -1.7% | 19.7% | 748 | 768 | 2.7% | 19.6% |

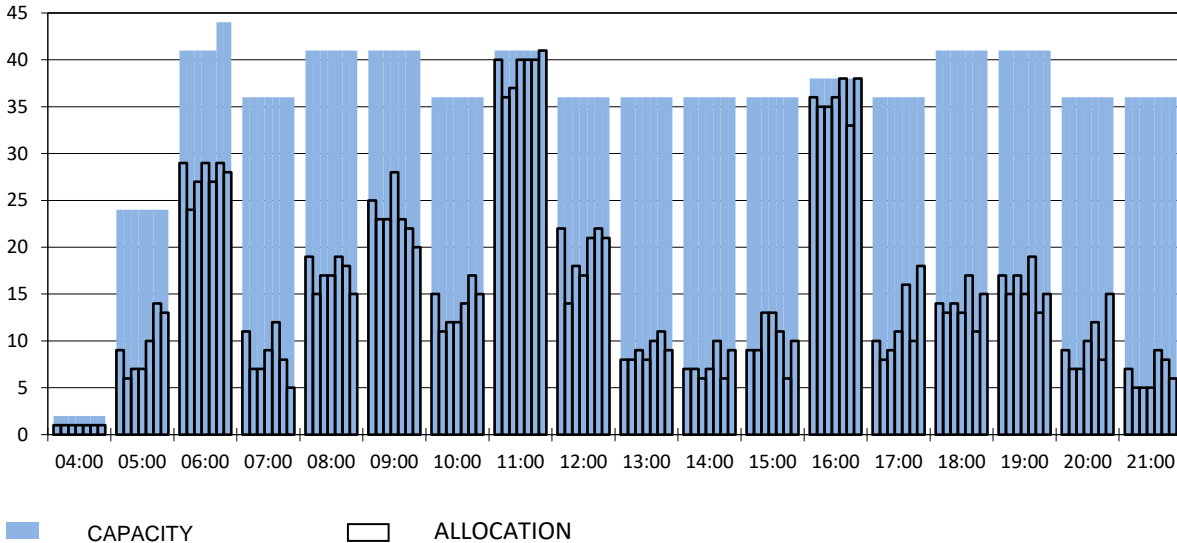
RUNWAY MOVEMENT START OF SEASON - ARRIVALS

Reference week, movements per hour - all times UTC



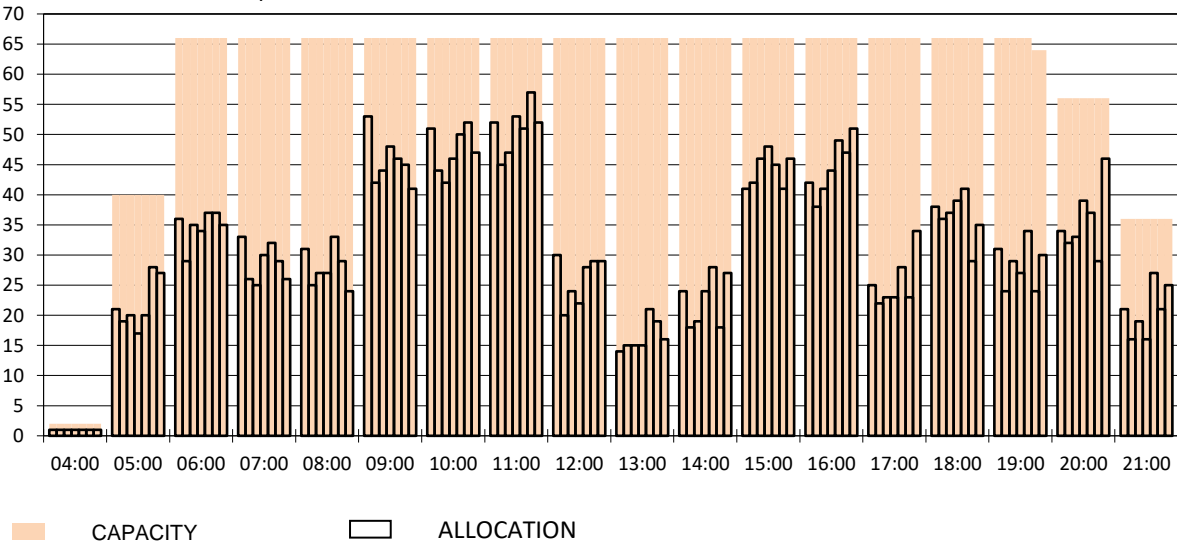
RUNWAY MOVEMENT START OF SEASON - DEPARTURES

Reference week, movements per hour - all times UTC



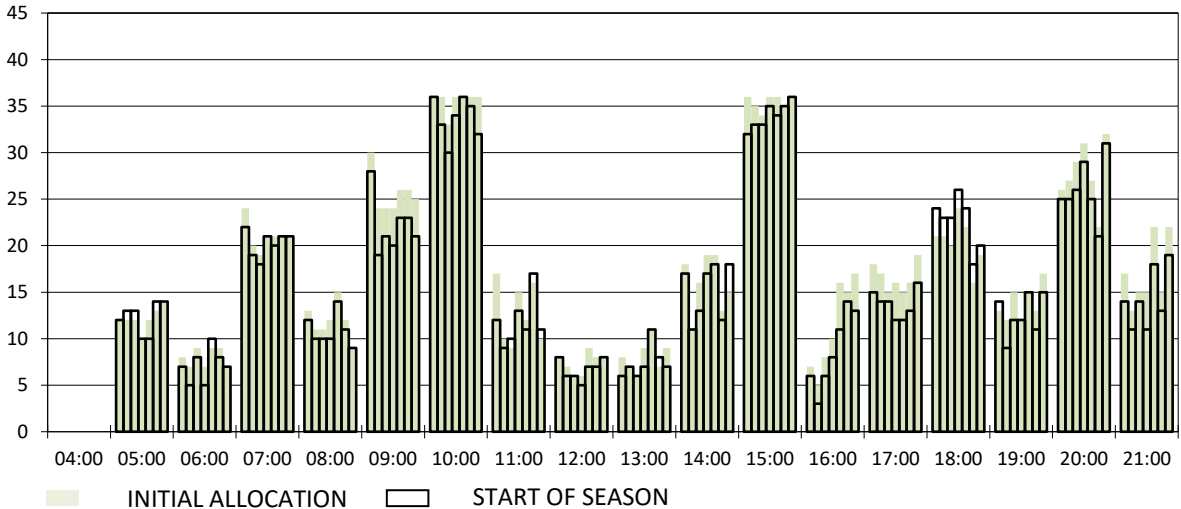
RUNWAY MOVEMENT START OF SEASON - TOTALS

Reference week, movements per hour - all times UTC



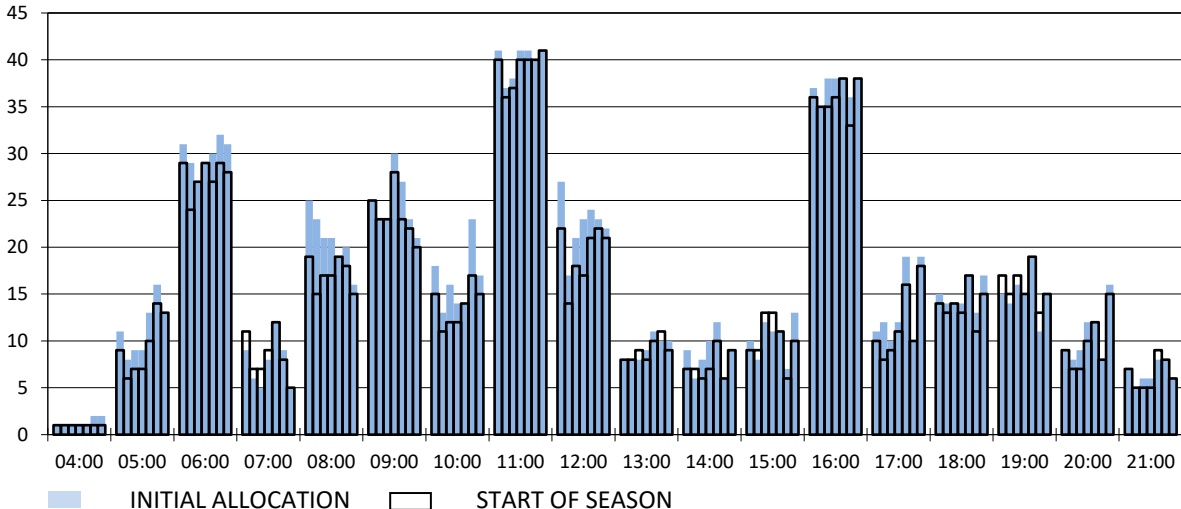
RUNWAY MOVEMENT DEVELOPMENT INITIAL ALLOCATION TO START OF SEASON - ARRIVALS

Reference week, movements per hour - all times UTC



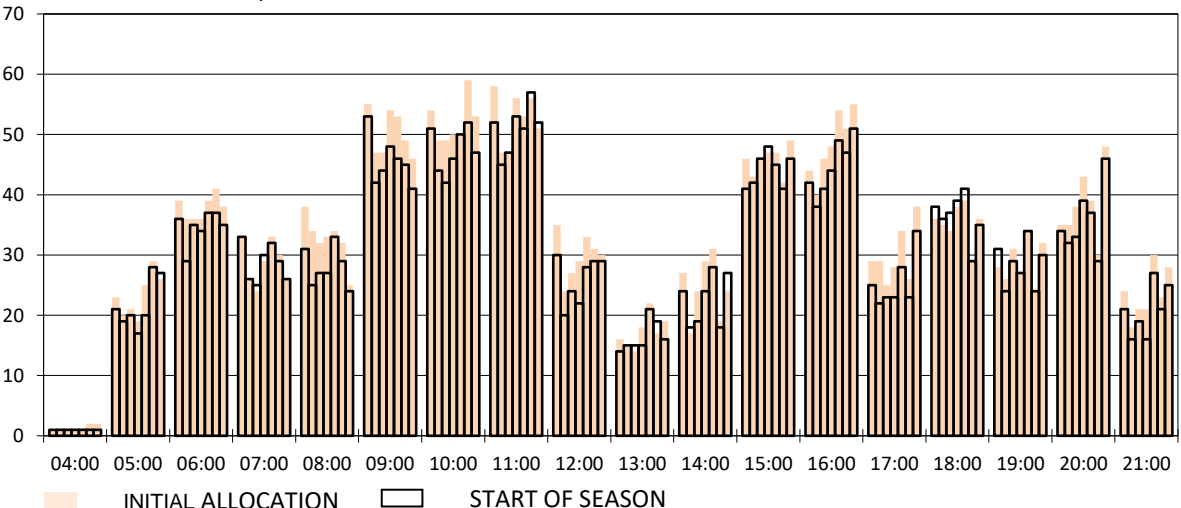
RUNWAY MOVEMENT DEVELOPMENT INITIAL ALLOCATION TO START OF SEASON - DEPARTURES

Reference week, movements per hour - all times UTC

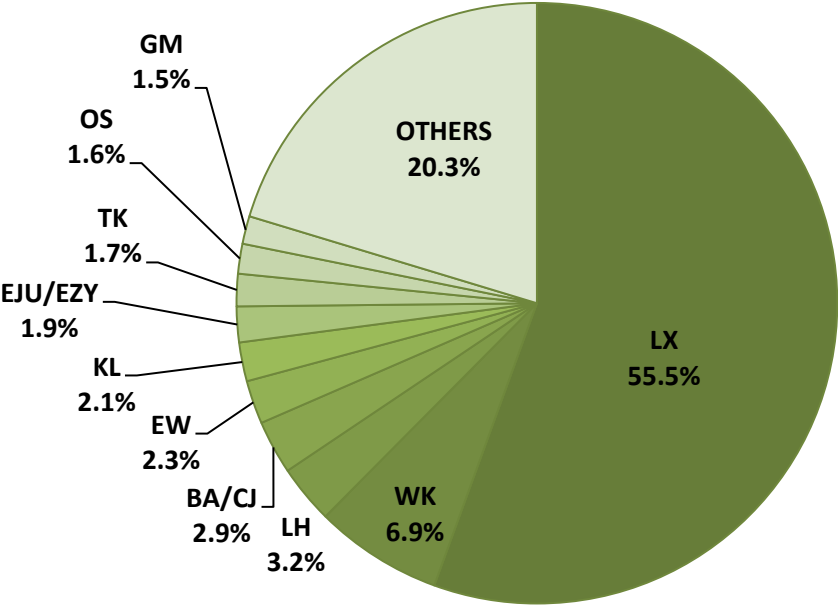


RUNWAY MOVEMENT DEVELOPMENT INITIAL ALLOCATION TO START OF SEASON - TOTALS

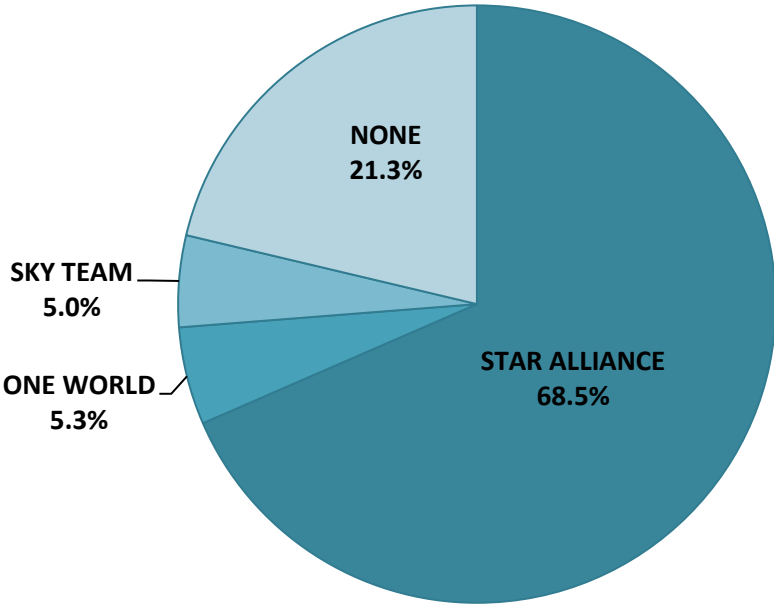
Reference week, movements per hour - all times UTC



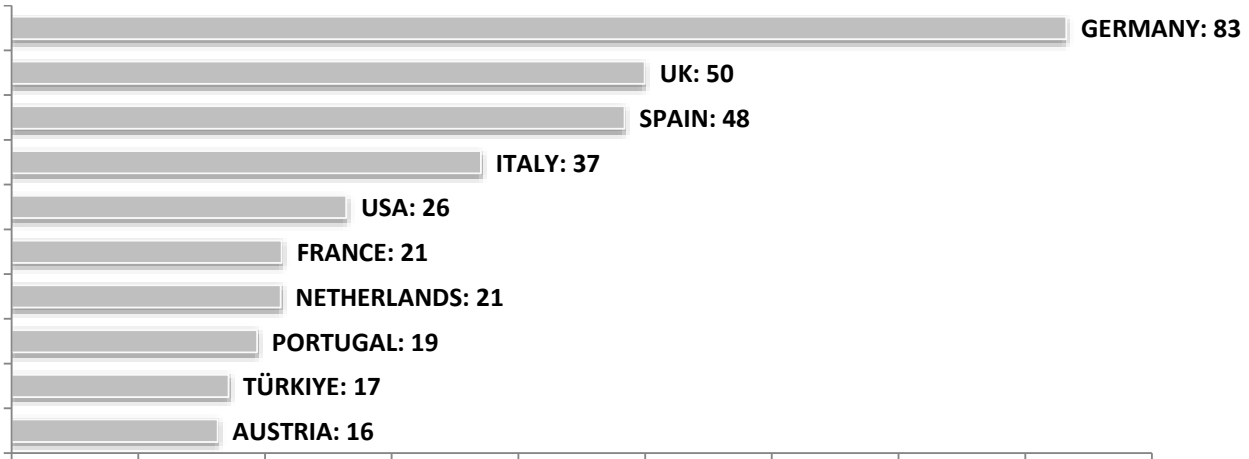
SEASONAL SLOT SHARE - 10 TOP CARRIER



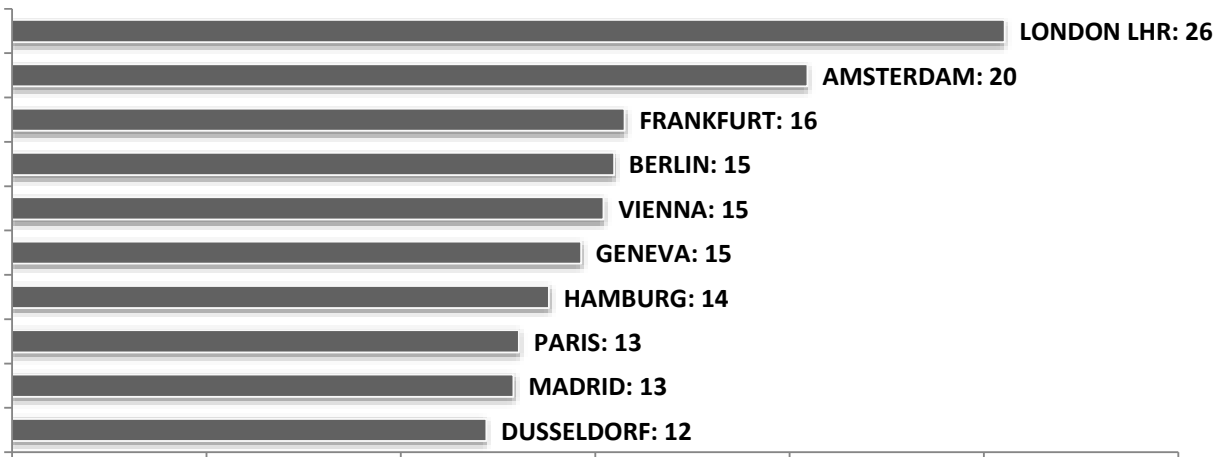
SEASONAL SLOT SHARE - PER ALLIANCES



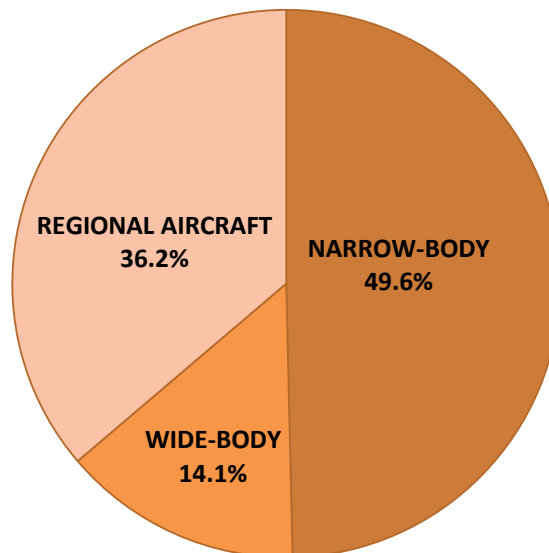
TOP 10 COUNTRIES - Number of Daily Slots



TOP 10 ROUTES - Number of Daily Slots



AIRCRAFT UTILISATION



Aircraft Sizes

- Widebody e.g. A330, B767, B777
- Narrowbody e.g. A220, A32S, B737
- Regional Aircraft e.g. CRJ, ERJ, DH4