

START OF SEASON REPORT GENEVA WINTER SEASON

29 OCTOBER 2023 - 30 MARCH 2024 (W23)

2023

KEY FIGURES	W22	W23	+/-
Cleared Airport Slots	55,042	59,079	7.3%
Seats (1000)	9,403	10,208	8.6%
Seats per Airport Slot	171	173	1.0%
Runway Utilisation Days 1-5	62.6%	65.9%	3.3%
Runway Utilisation Day 6	83.4%	86.6%	3.2%
Runway Utilisation Day 7	79.7%	81.0%	1.3%
Number of Carriers	58	61	3

Note: For comparison reasons W22 figures (21 season weeks) are transposed to reflect W23's 22 season weeks!

TABLE OF CONTENTS

	Page
Overview Main Carriers	2
Runway Histograms	3
Terminal Histograms	4
Slot Shares	5
Traffic Flows, Aircraft Utilisation	6

GLOSSARY OF TERMS

Allocation	The allocation of slots within declared capacity limits.
Capacity Limits	Limiting parameters declared by the Airport Operator used in the coordination process.
Seats	The number of seats based on the aircraft configuration advised by the airline.

GUIDE TO HISTOGRAMS

The histograms show the pattern of traffic by time of day against the appropriate capacity limit. Each time period consists of seven columns representing the days-of-week, Monday through Sunday. All histograms are based on a reference week.

For Winter 2023 the reference week is 12-18 February 2024.

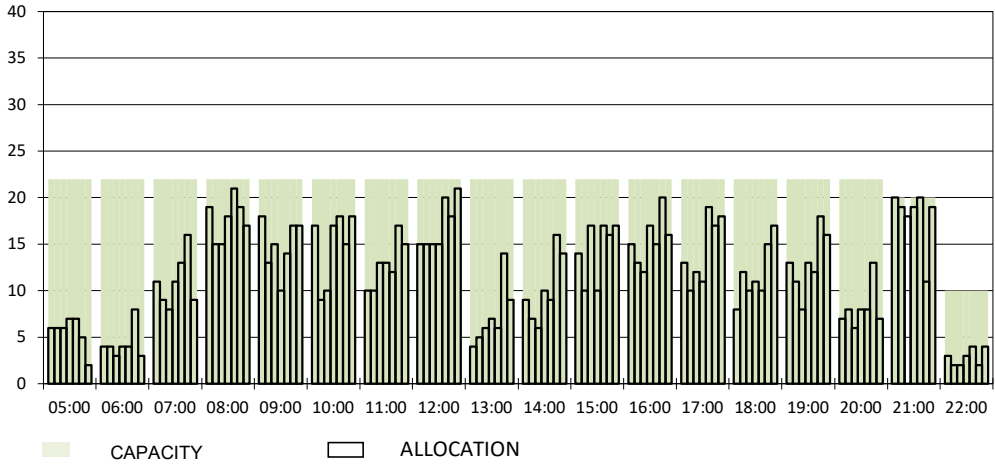
OVERVIEW MAIN CARRIERS

Number of average slots per week

	START OF SEASON				SLOT RETURN			
	W22	W23	+/-	Share	W22	W23	+/-	Share
ALL CARRIERS	2502	2685	7.3%		2607	2735	4.9%	
Swiss Carriers	861	986	14.5%	36.7%	894	1012	13.2%	37.0%
<i>where of</i>								
EasyJet Switzerland	516	589	14.1%	21.9%	527	593	12.5%	21.7%
Swiss International Air Lines	345	397	15.1%	14.8%	367	419	14.2%	15.3%
Foreign Carriers	1641	1699	3.5%	63.3%	1713	1723	0.6%	63.0%
<i>where of</i>								
EasyJet Europe & UK	424	442	4.2%	16.5%	433	440	1.6%	16.1%
British Airways / BA EuroFlyer / BA CityFlyer	203	189	-6.9%	7.0%	205	190	-7.3%	6.9%
Air France	115	109	-5.2%	4.1%	124	124	0.0%	4.5%
KLM	75	83	10.7%	3.1%	84	84	0.0%	3.1%
Iberia	65	70	7.7%	2.6%	65	71	9.2%	2.6%
Lufthansa	91	67	-26.4%	2.5%	90	67	-25.6%	2.4%
TAP Air Portugal	50	52	4.0%	1.9%	50	52	4.0%	1.9%
Turkish Airlines	36	42	16.7%	1.6%	34	42	23.5%	1.5%
Jet2	35	41	17.1%	1.5%	33	39	18.2%	1.4%
Brussels Airlines	41	40	-2.4%	1.5%	67	40	-40.3%	1.5%
Maj. foreign Carriers	1135	1135	0.0%	42.3%	1185	1149	-3.0%	42.0%

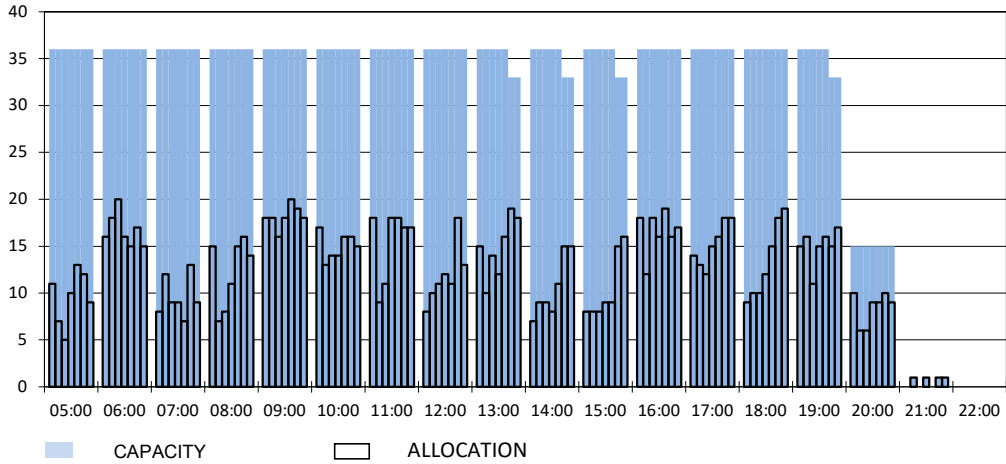
RUNWAY MOVEMENT START OF SEASON - ARRIVALS

Reference week, movements per hour - all times UTC



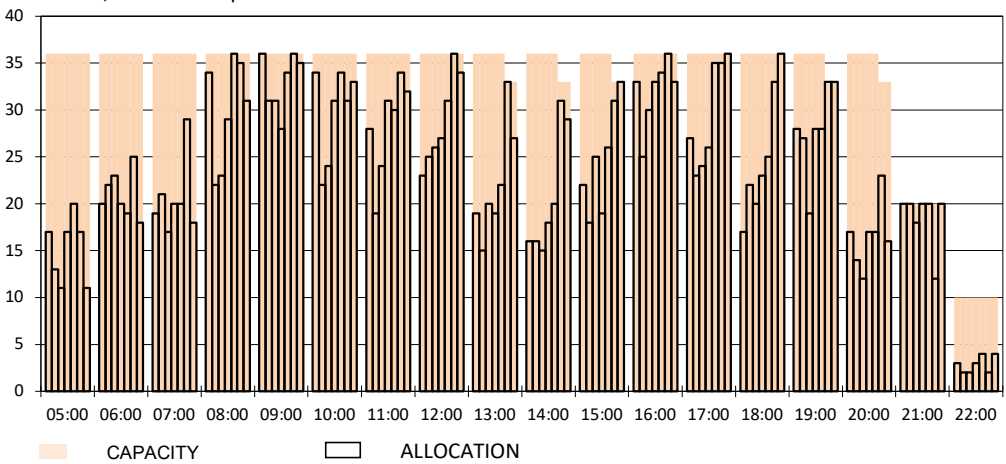
RUNWAY MOVEMENT START OF SEASON - DEPARTURES

Reference week, movements per hour - all times UTC



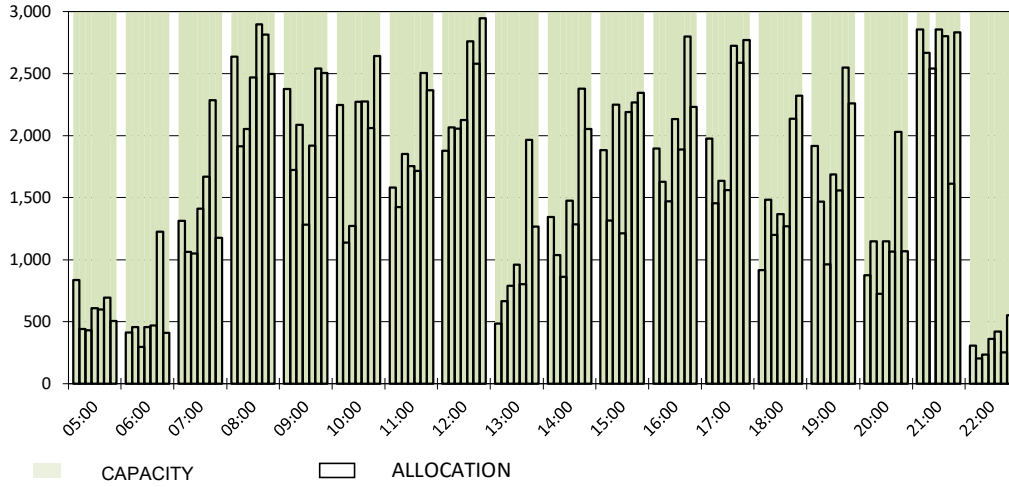
RUNWAY MOVEMENT START OF SEASON - TOTALS

Reference week, movements per hour - all times UTC



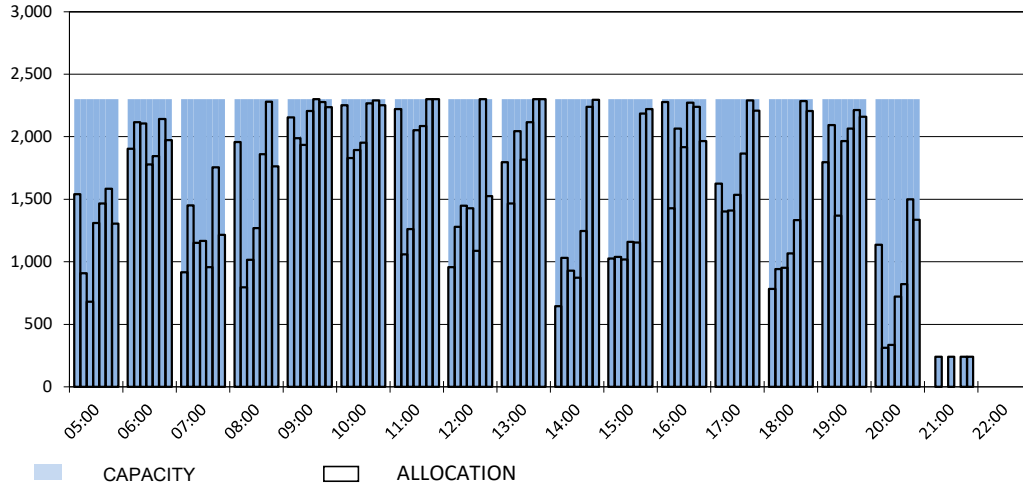
MAIN TERMINAL START OF SEASON - ARRIVALS

Reference week, movements per hour - all times UTC



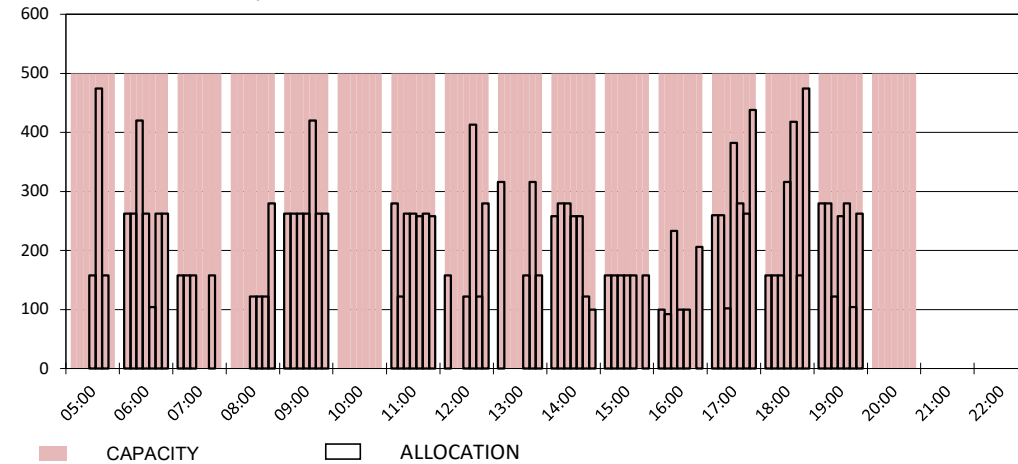
MAIN TERMINAL START OF SEASON - DEPARTURES

Reference week, movements per hour - all times UTC

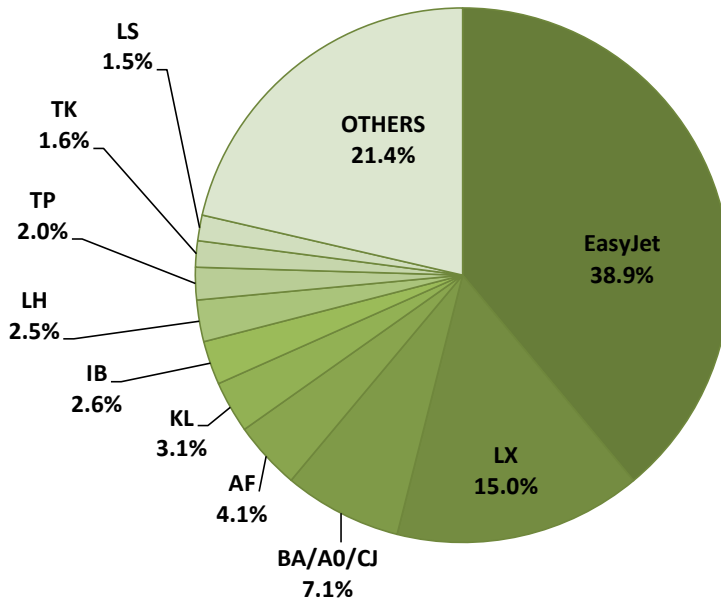


FRENCH SECTOR TERMINAL START OF SEASON - DEPARTURES

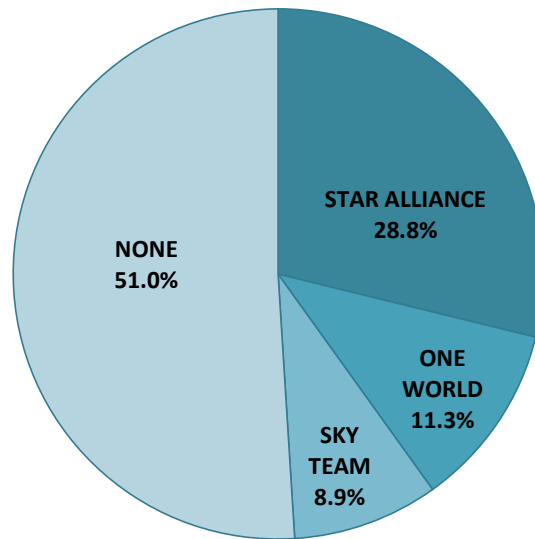
Reference week, movements per hour - all times UTC



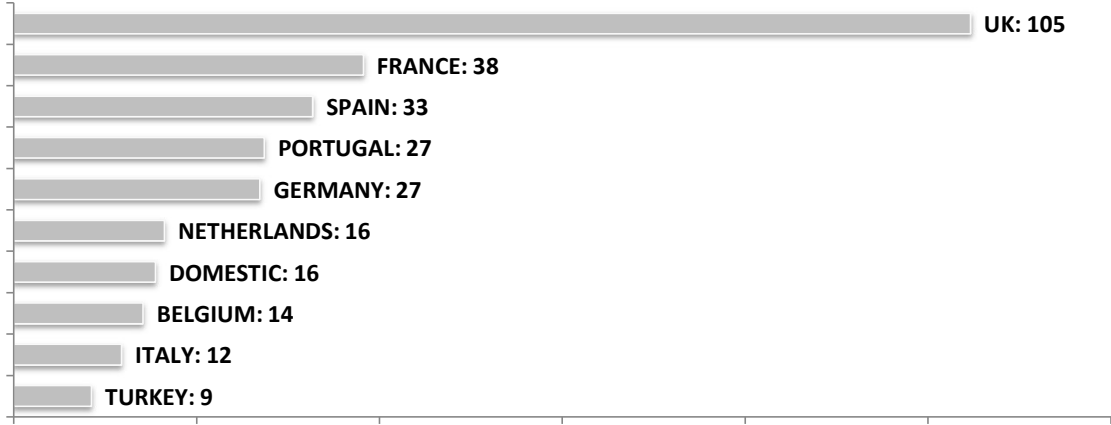
SEASONAL SLOT SHARE - 10 TOP CARRIER



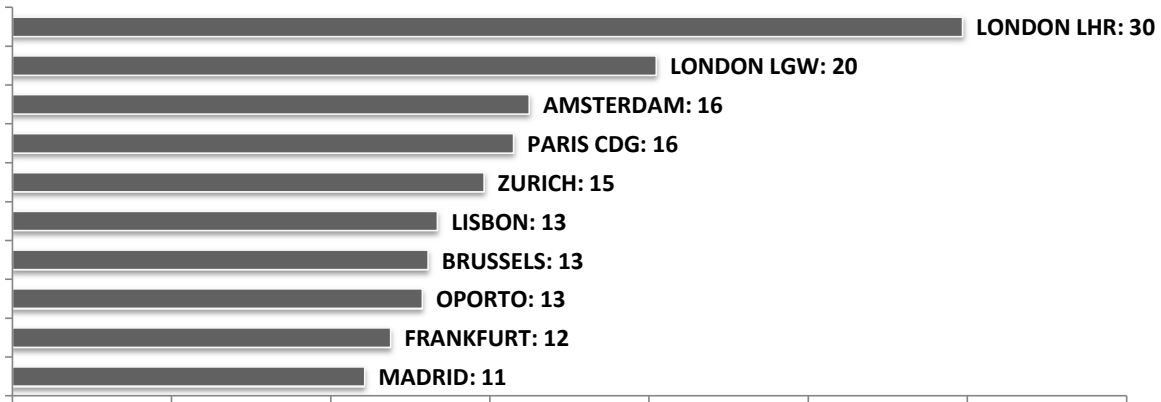
SEASONAL SLOT SHARE - PER ALLIANCES



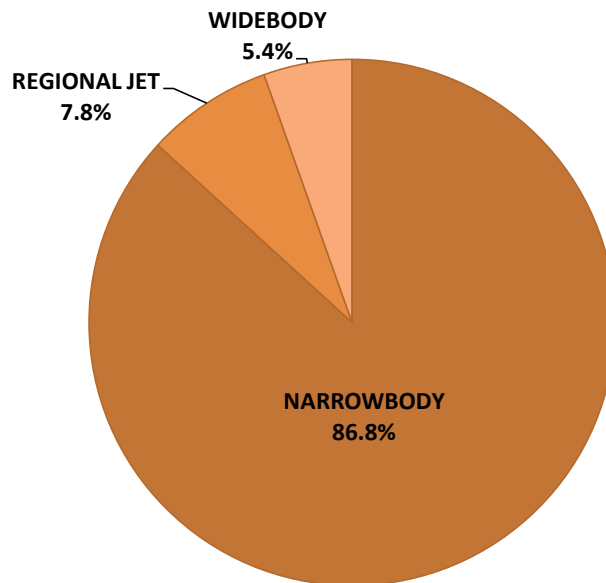
TOP 10 COUNTRIES - Number of Daily Slots



TOP 10 ROUTES - Number of Daily Slots



AIRCRAFT UTILISATION



Aircraft Sizes
 Widebody e.g. A330, A350, B777
 Narrowbody e.g. A220, A32S, B737
 Regional Jet e.g. CRJ, ERJ, DH4