

START OF SEASON REPORT ZURICH SUMMER SEASON

31 MARCH - 26 OCTOBER 2024 (S24)

2024

| KEY FIGURES | S23 | S24 | +/- |
|------------------------|---------|----------------|------|
| Cleared Airport Slots | 137,480 | 147,258 | 7.1% |
| Seats offered (1000) | 23,890 | 25,753 | 7.8% |
| Seats per Airport Slot | 174 | 175 | 0.6% |
| Runway Utilisation | 61.8% | 66.2% | 4.4% |
| Number of Carriers | 75 | 76 | +1 |

Note: For comparison reasons S23 figures (31 season weeks) are transposed to reflect S24's 30 season weeks!

TABLE OF CONTENTS

| | Page |
|-------------------------------------|------|
| Overview Main Carriers | 2 |
| Runway Histograms | 3,4 |
| Slot Shares | 5 |
| Traffic Flows, Aircraft Utilisation | 6 |

GLOSSARY OF TERMS

| | |
|------------------------|--|
| Allocation | The allocation of slots within declared capacity limits. |
| Capacity Limits | Limiting parameters declared by the Airport Operator used in the coordination process. |
| Seats | The number of seats based on the aircraft configuration advised by the airline. |

GUIDE TO HISTOGRAMS

The histograms show the pattern of traffic by time of day against the appropriate capacity limit. Each time period consists of seven columns representing the days-of-week, Monday through Sunday. All histograms are based on a reference week. For Summer 2024 the reference week is 09-15 September 2024.

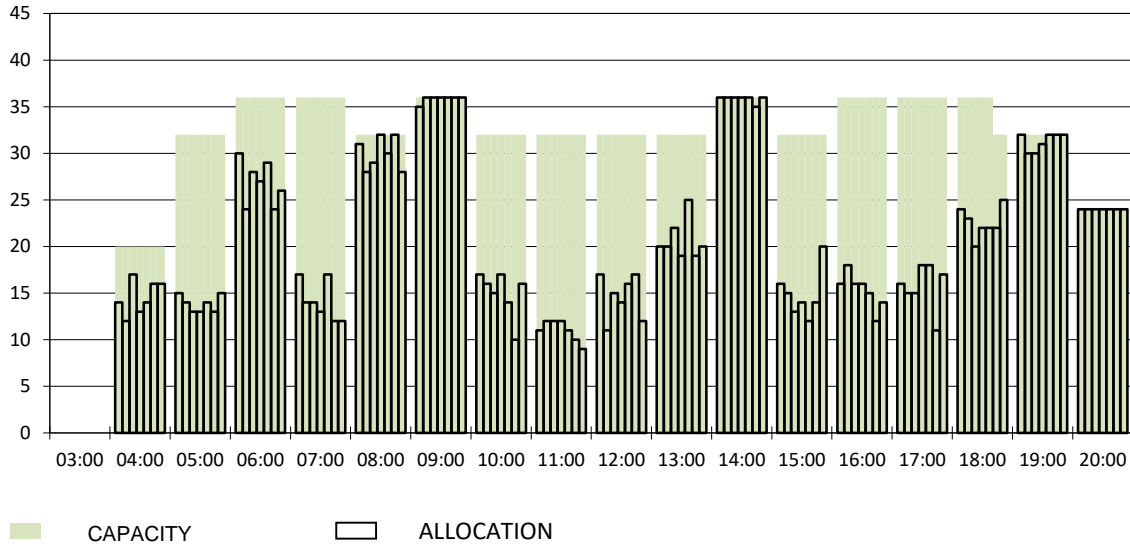
OVERVIEW MAIN CARRIERS

Number of average slots per week

| | START OF SEASON | | | | SLOT RETURN | | | |
|-------------------------------|-----------------|------|--------|-------|-------------|------|--------|-------|
| | S23 | S24 | +/- | Share | S23 | S24 | +/- | Share |
| ALL CARRIERS | 4583 | 4909 | 7.1% | | 4648 | 4927 | 6.0% | |
| Swiss Carriers | 2929 | 3230 | 10.3% | 65.8% | 2953 | 3233 | 9.5% | 65.6% |
| <i>where of</i> | | | | | | | | |
| Swiss International Air Lines | 2382 | 2657 | 11.5% | 54.1% | 2402 | 2660 | 10.7% | 54.0% |
| Edelweiss Air | 428 | 473 | 10.5% | 9.6% | 428 | 471 | 10.0% | 9.6% |
| Chair Airlines | 109 | 94 | -13.8% | 1.9% | 113 | 95 | -15.9% | 1.9% |
| Helvetic | 10 | 6 | -40.0% | 0.1% | 10 | 7 | -30.0% | 0.1% |
| Foreign Carriers | 1654 | 1679 | 1.5% | 34.2% | 1695 | 1694 | -0.1% | 34.4% |
| <i>where of</i> | | | | | | | | |
| Lufthansa | 139 | 139 | 0.0% | 2.8% | 140 | 140 | 0.0% | 2.8% |
| Eurowings | 110 | 133 | 20.9% | 2.7% | 105 | 135 | 28.6% | 2.7% |
| British Airways, BACF | 92 | 91 | -1.1% | 1.9% | 96 | 92 | -4.2% | 1.9% |
| Easyjet | 73 | 85 | 16.4% | 1.7% | 73 | 79 | 8.2% | 1.6% |
| KLM | 81 | 81 | 0.0% | 1.7% | 82 | 82 | 0.0% | 1.7% |
| Austrian Airlines | 102 | 77 | -24.5% | 1.6% | 102 | 77 | -24.5% | 1.6% |
| Turkish Airlines | 72 | 62 | -13.9% | 1.3% | 80 | 76 | -5.0% | 1.5% |
| SunExpress | 57 | 59 | 3.5% | 1.2% | 57 | 59 | 3.5% | 1.2% |
| Vueling | 61 | 56 | -8.2% | 1.1% | 61 | 56 | -8.2% | 1.1% |
| United Airlines | 53 | 54 | 1.9% | 1.1% | 53 | 54 | 1.9% | 1.1% |
| Maj. foreign Carriers | 840 | 837 | -0.4% | 17.1% | 849 | 850 | 0.1% | 17.3% |

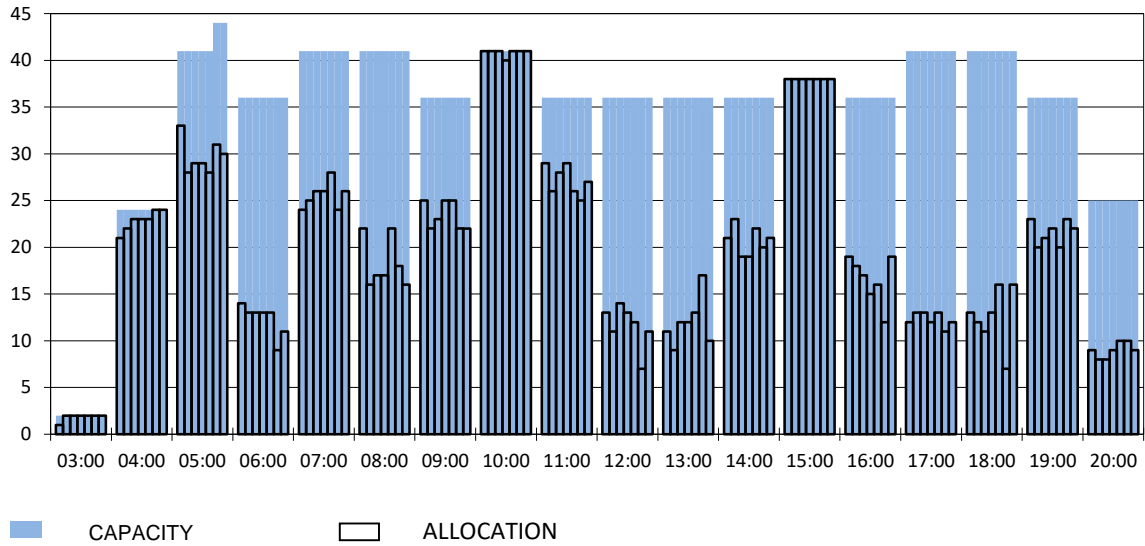
RUNWAY MOVEMENT START OF SEASON - ARRIVALS

Reference week, movements per hour - all times UTC



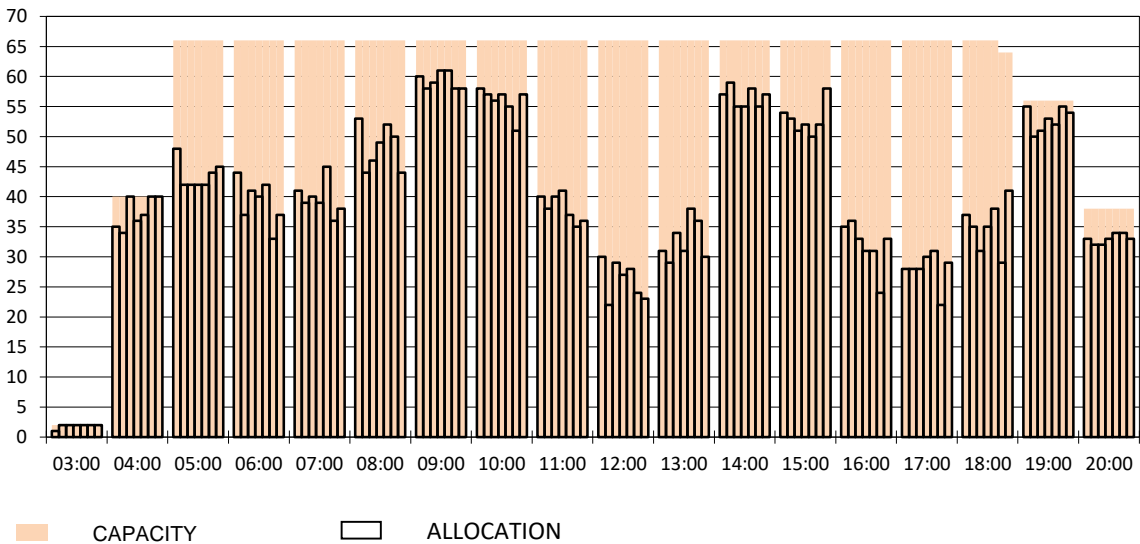
RUNWAY MOVEMENT START OF SEASON - DEPARTURES

Reference week, movements per hour - all times UTC



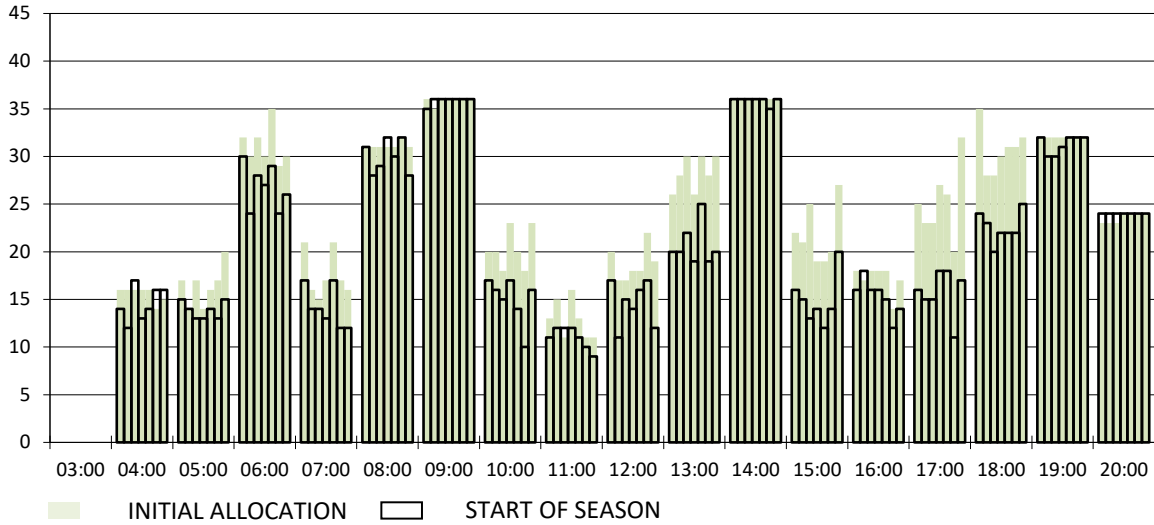
RUNWAY MOVEMENT START OF SEASON - TOTALS

Reference week, movements per hour - all times UTC



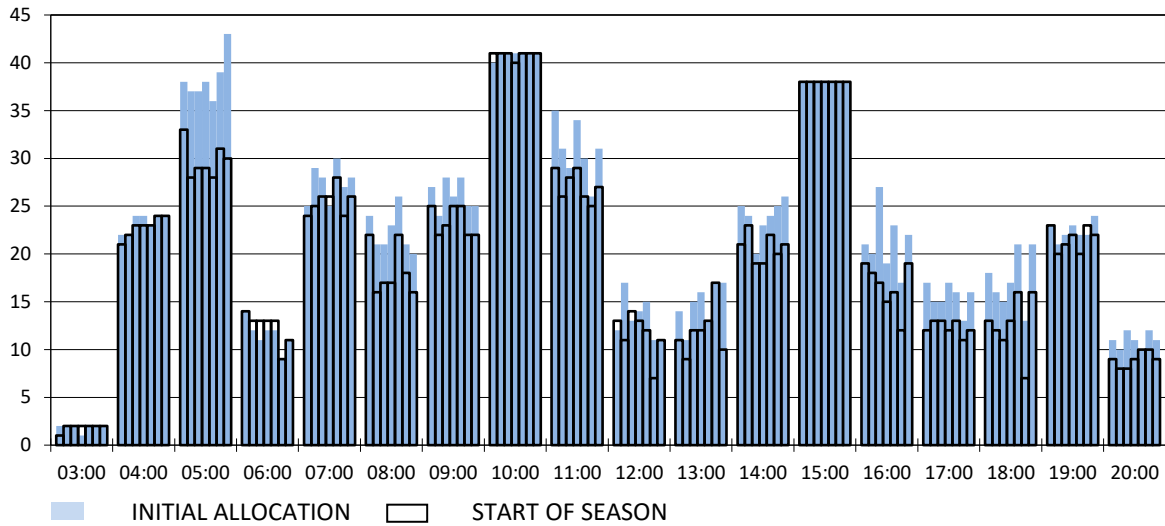
RUNWAY MOVEMENT DEVELOPMENT INITIAL ALLOCATION TO START OF SEASON - ARRIVALS

Reference week, movements per hour - all times UTC



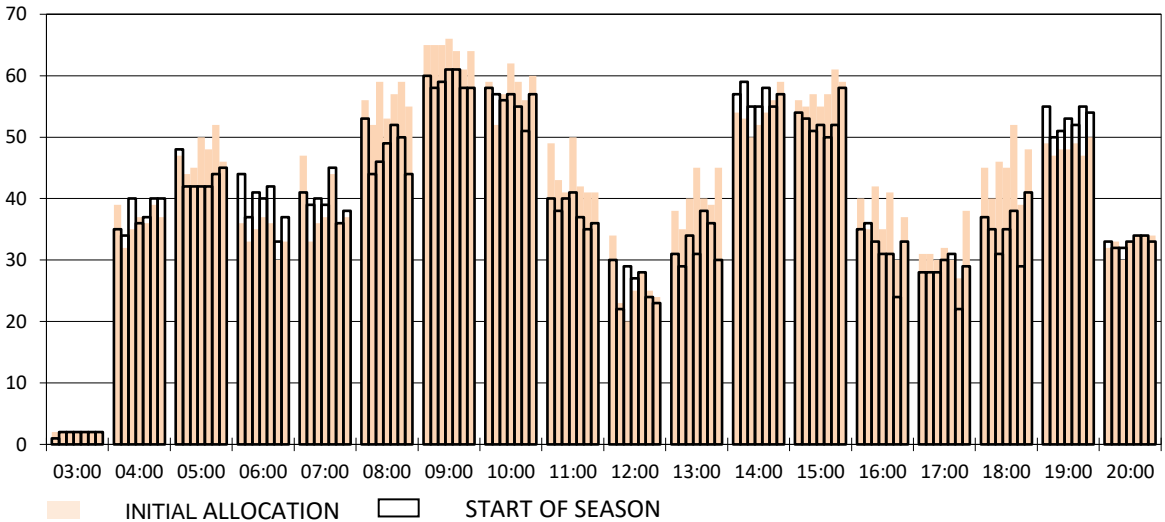
RUNWAY MOVEMENT DEVELOPMENT INITIAL ALLOCATION TO START OF SEASON - DEPARTURES

Reference week, movements per hour - all times UTC

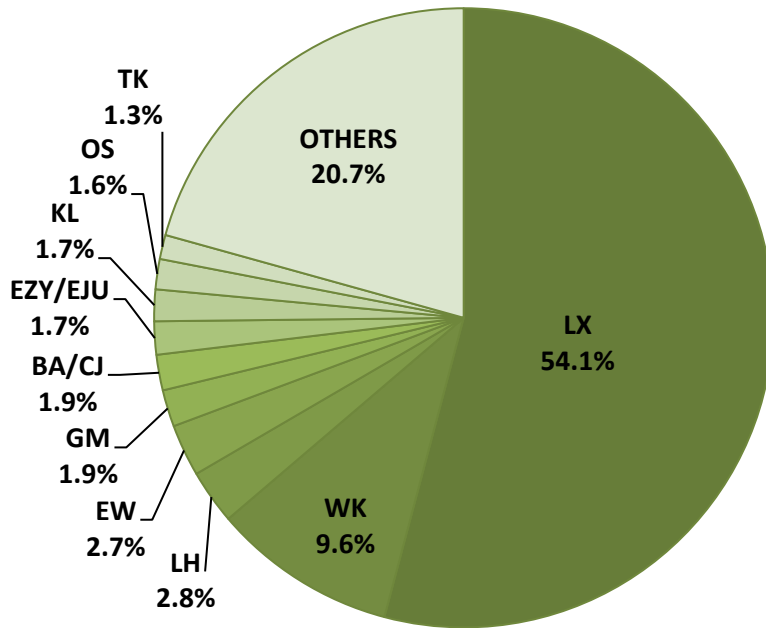


RUNWAY MOVEMENT DEVELOPMENT INITIAL ALLOCATION TO START OF SEASON - TOTALS

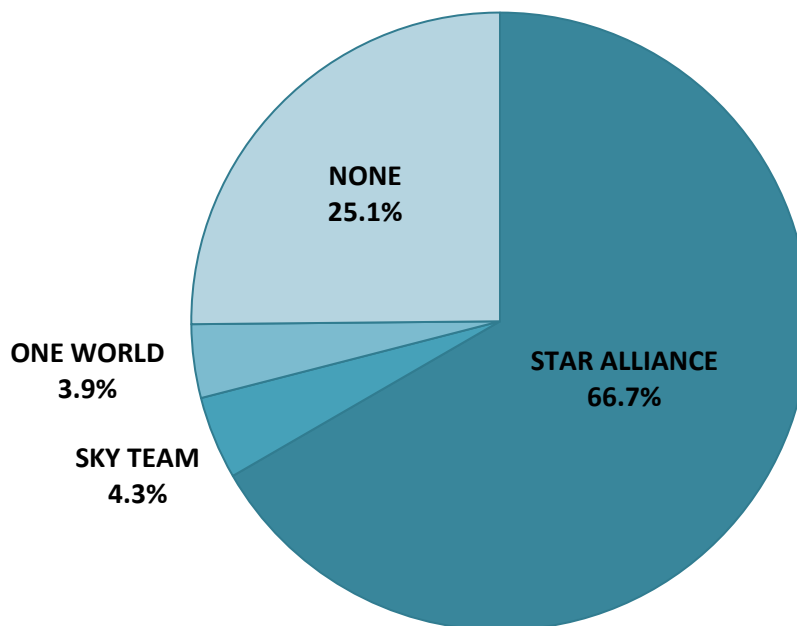
Reference week, movements per hour - all times UTC



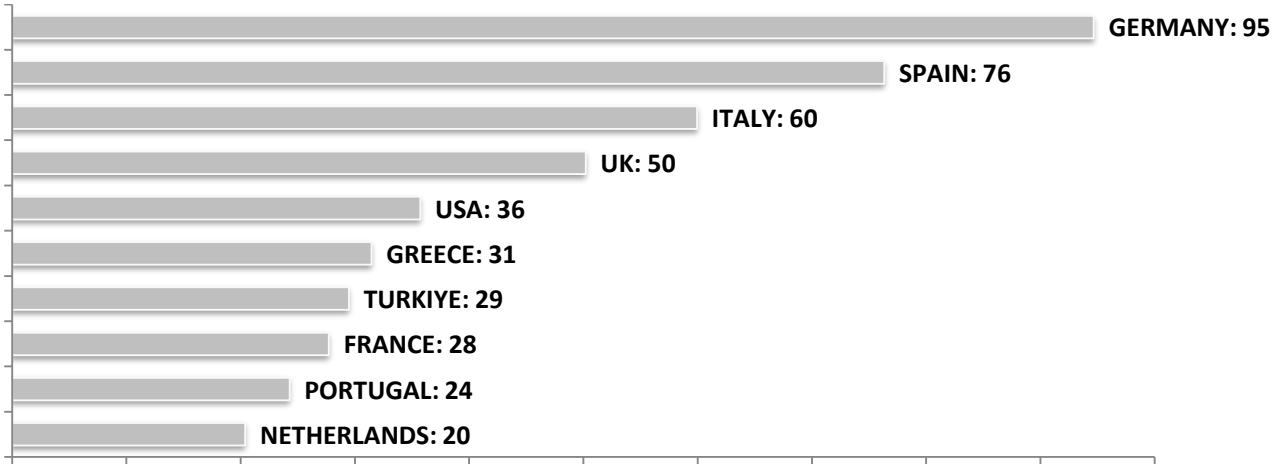
SEASONAL SLOT SHARE - 10 TOP CARRIER



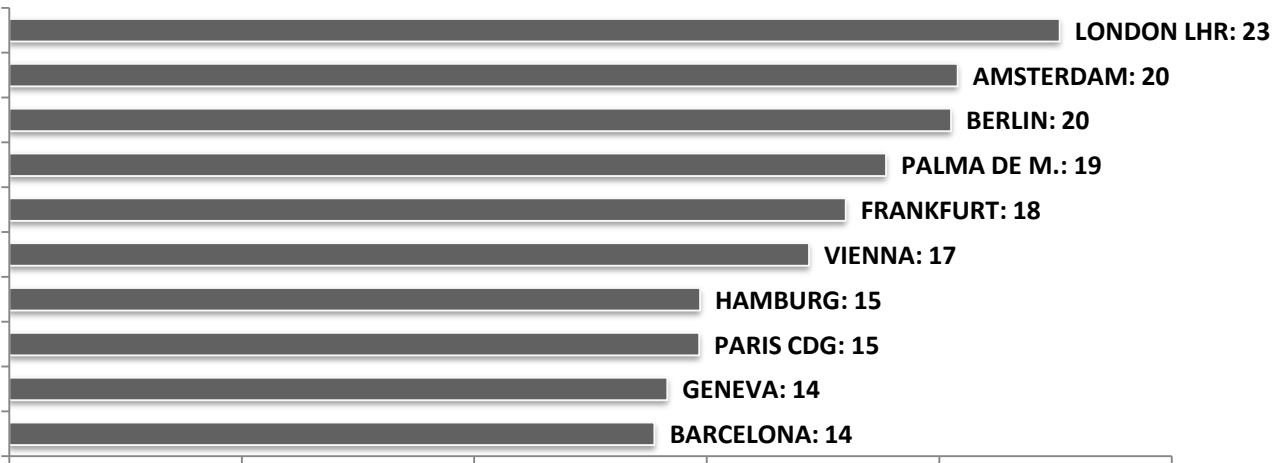
SEASONAL SLOT SHARE - PER ALLIANCES



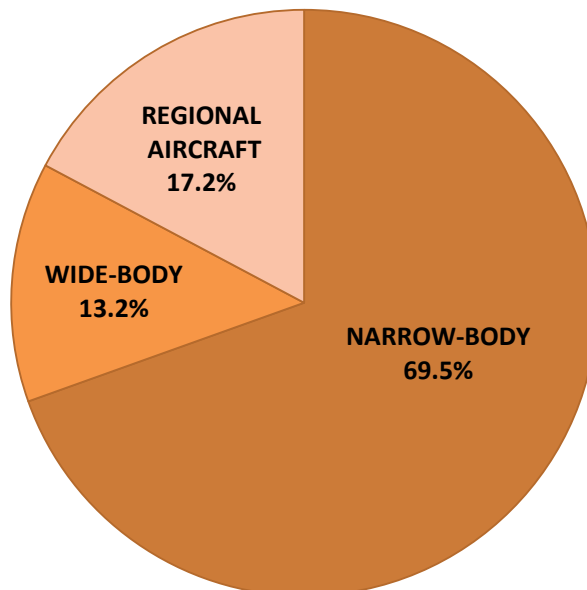
TOP 10 COUNTRIES - Number of Daily Slots



TOP 10 ROUTES - Number of Daily Slots



AIRCRAFT UTILISATION



Aircraft Sizes

- Widebody e.g. A330, A350, B777
- Narrowbody e.g. A220, A32S, B737
- Regional Aircraft e.g. CRJ, ERJ, DH4