

START OF SEASON REPORT GENEVA SUMMER SEASON

31 MARCH - 26 OCTOBER 2024 (S24)

2024

KEY FIGURES	S23	S24	+/-
Airport Slots	79,006	83,379	5.5%
Seats offered (1000)	13,509	14,199	5.1%
Seats per Airport Slot	171	170	-0.4%
Runway Utilisation	64.2%	65.5%	1.3%
Number of Carriers	60	62	+2

Note: For comparison reasons S23 figures (31 season weeks) are transposed to reflect S24's 30 season weeks!

TABLE OF CONTENTS

	Page
Management Summary	2
Overview Main Carriers	3
Runway Histograms	4
Terminal Histograms	5
Slot Shares	6
Traffic Flows, Aircraft Utilisation	7

GLOSSARY OF TERMS

Allocation	The allocation of slots within declared capacity limits.
Capacity Limits	Limiting parameters declared by the Airport Operator used in the coordination process.
Seats	The number of seats based on the aircraft configuration advised by the airline.

GUIDE TO HISTOGRAMS

The histograms show the pattern of traffic by time of day against the appropriate capacity limit. Each time period consists of seven columns representing the days-of-week, Monday through Sunday. All histograms are based on a reference week. For Summer 2024 the reference week is 09-15 September 2024.

OVERVIEW MAIN CARRIERS

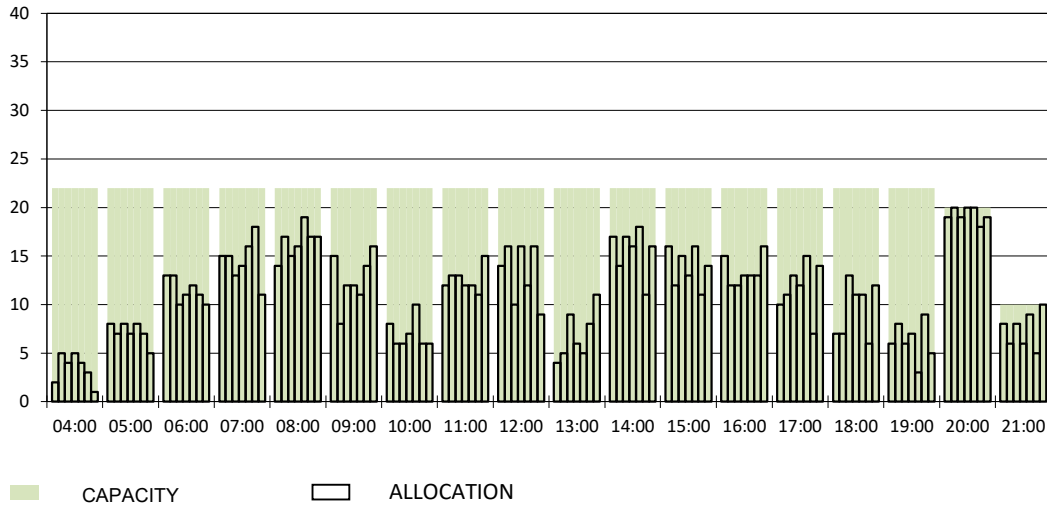
Number of average slots per week

	START OF SEASON			
	S23	S24	+/-	Share
ALL CARRIERS	2634	2779	5.5%	
Swiss Carriers	1094	1230	12.4%	44.3%
<i>where of</i>				
EasyJet Switzerland	669	759	13.5%	27.3%
Swiss International Air Lines	425	471	10.8%	16.9%
Foreign Carriers	1540	1549	0.6%	55.7%
<i>where of</i>				
EasyJet Europe & UK	360	365	1.4%	13.1%
Air France	113	97	-14.2%	3.5%
Air Dolomiti	0	93		3.3%
British Airways / BA Cityflyer /BA Euroflyer	97	90	-7.2%	3.2%
KLM	82	82	0.0%	3.0%
Iberia	73	72	-1.4%	2.6%
TAP Air Portugal	52	52	0.0%	1.9%
Turkish Airlines	51	42	-17.6%	1.5%
Brussels Airlines	38	39	2.6%	1.4%
Maj. foreign Carriers	866	932	7.6%	33.5%

SLOT RETURN			
S23	S24	+/-	Share
2710	2799	3.3%	
1151	1225	6.4%	43.8%
676	759	12.3%	27.1%
475	466	-1.9%	16.6%
1559	1574	1.0%	56.2%
372	368	-1.1%	13.1%
113	98	-13.3%	3.5%
0	82		2.9%
100	90	-10.0%	3.2%
84	84	0.0%	3.0%
73	72	-1.4%	2.6%
52	52	0.0%	1.9%
49	44	-10.2%	1.6%
39	40	2.6%	1.4%
882	930	5.4%	33.2%

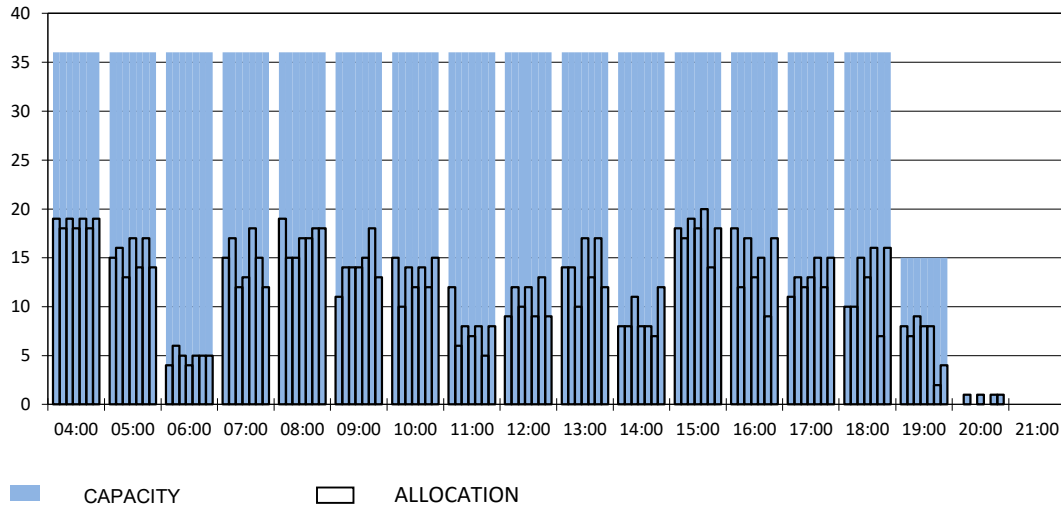
RUNWAY START OF SEASON - ARRIVALS

Reference week, movements per hour - all times UTC



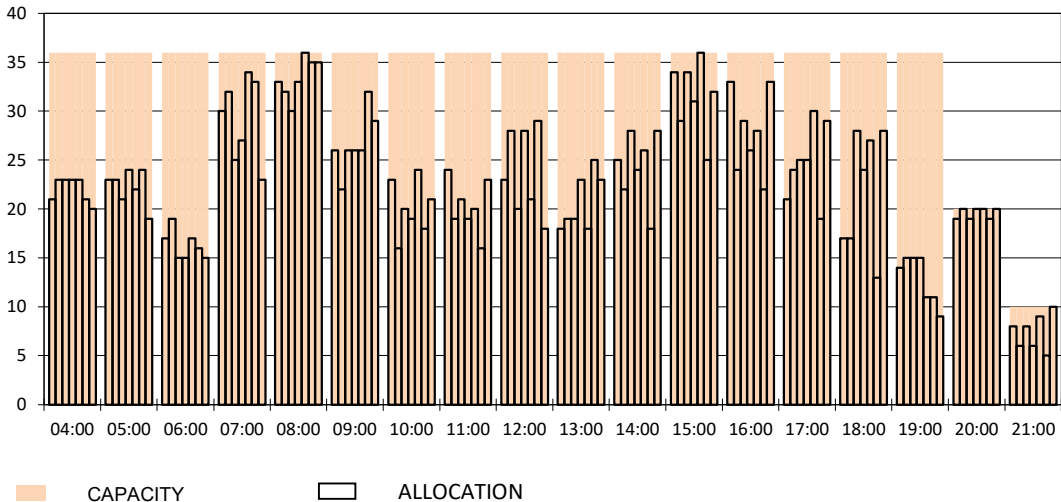
RUNWAY MOVEMENT START OF SEASON - DEPARTURES

Reference week, movements per hour - all times UTC



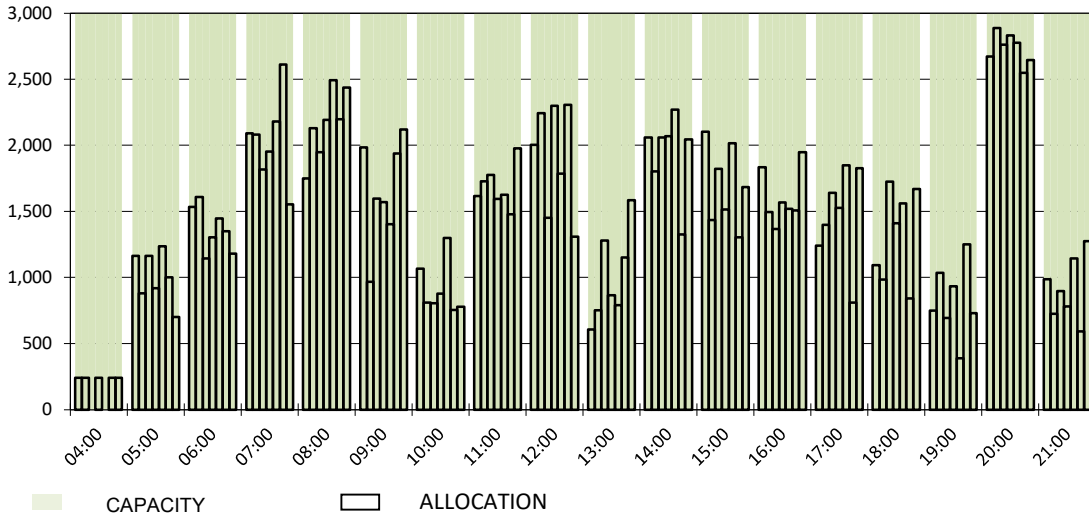
RUNWAY MOVEMENT START OF SEASON - TOTALS

Reference week, movements per hour - all times UTC



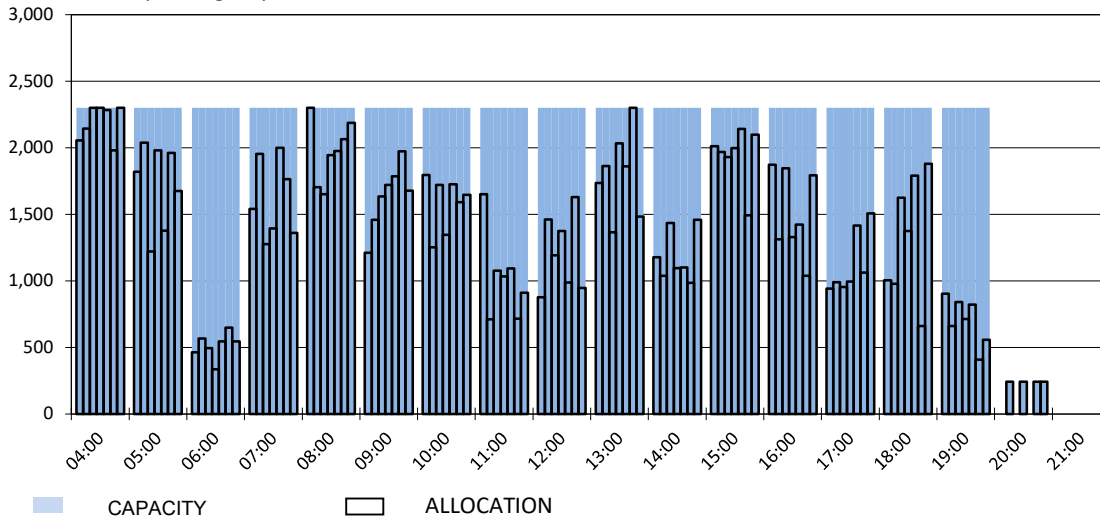
MAIN TERMINAL START OF SEASON - ARRIVALS

Reference week, passengers per hour - all times UTC



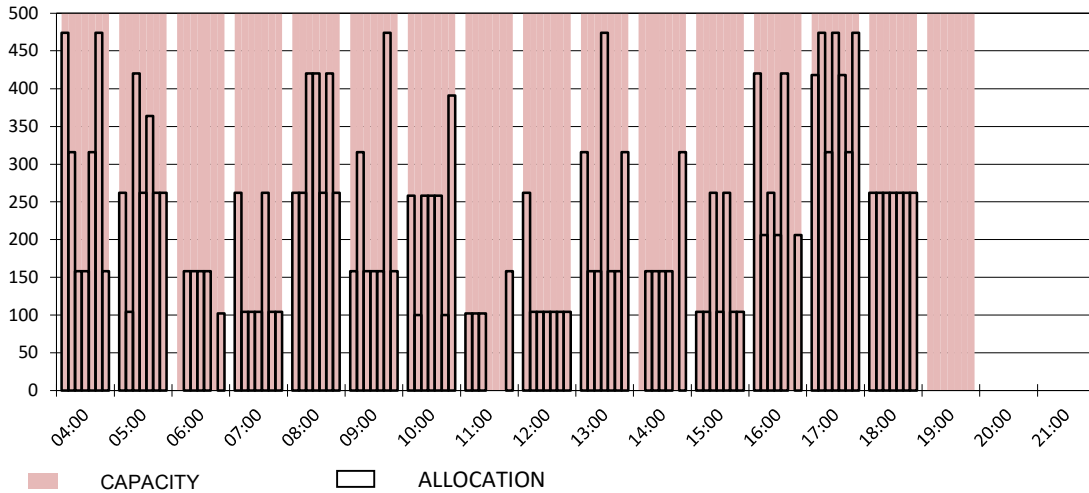
MAIN TERMINAL START OF SEASON - DEPARTURES

Reference week, passengers per hour - all times UTC

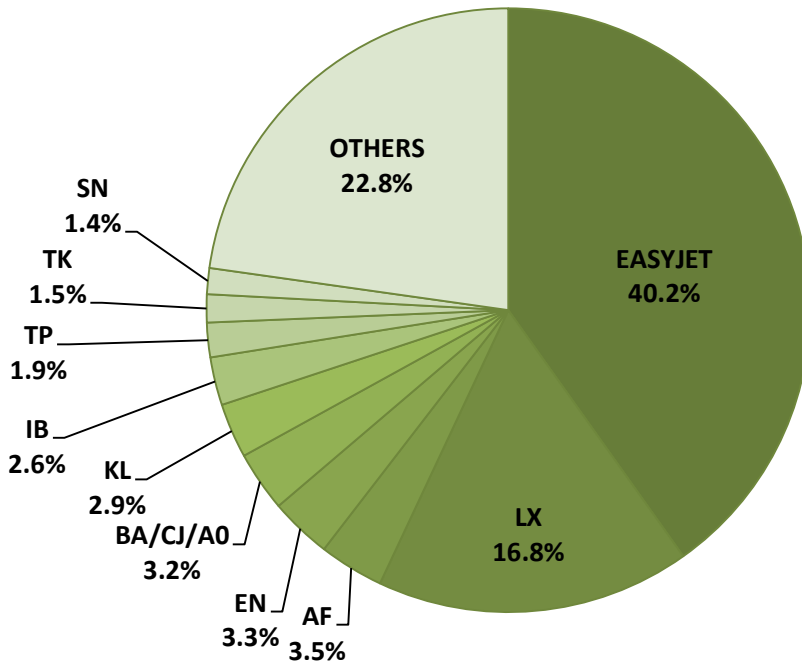


FRENCH SECTOR TERMINAL START OF SEASON - DEPARTURES

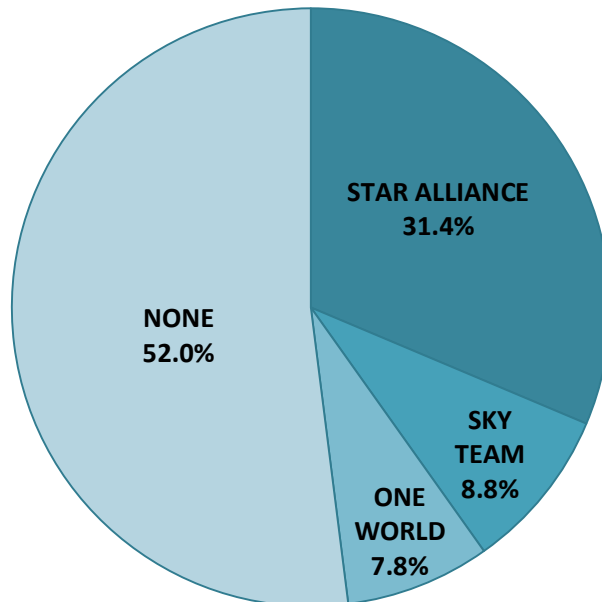
Reference week, passengers per hour - all times UTC



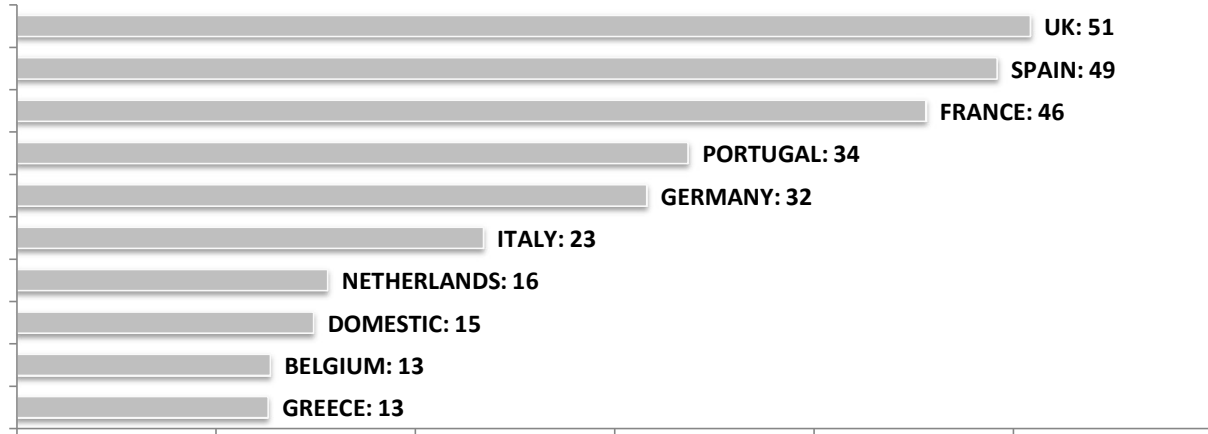
SEASONAL SLOT SHARE - 10 TOP CARRIER



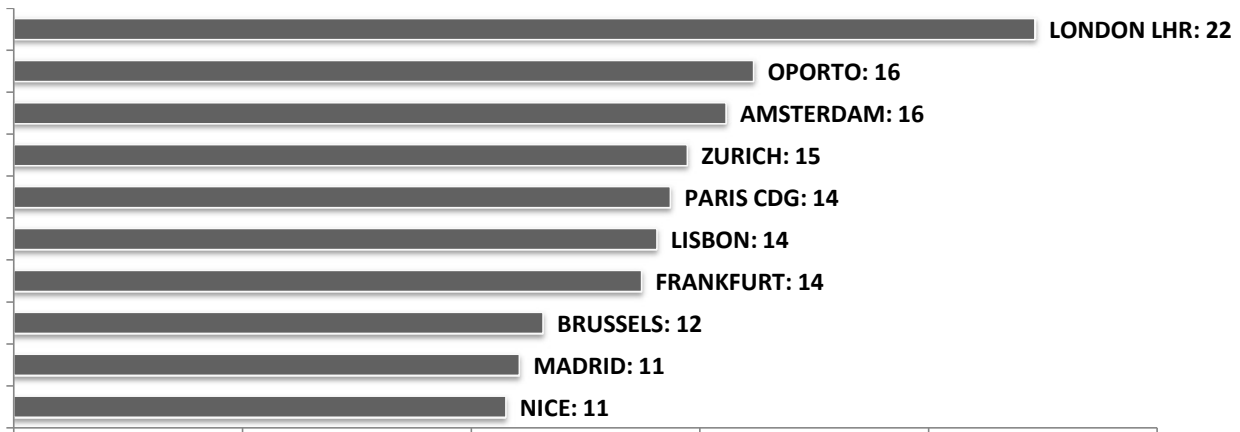
SEASONAL SLOT SHARE - PER ALLIANCES



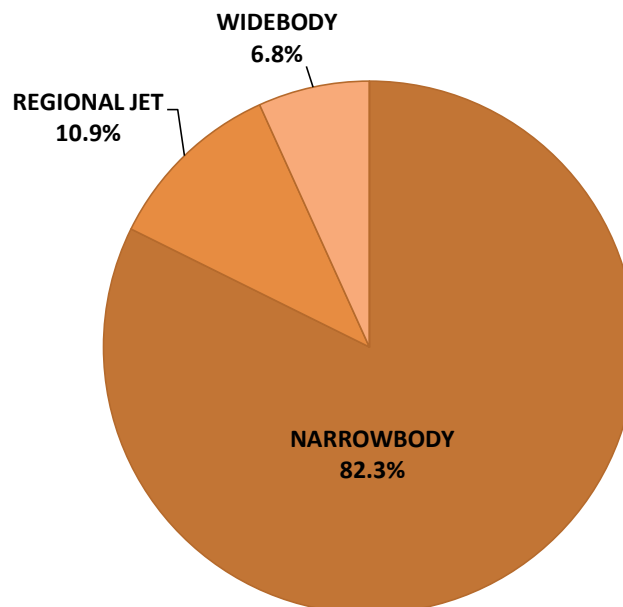
TOP 10 COUNTRIES - Number of Daily Slots



TOP 10 ROUTES - Number of Daily Slots



AIRCRAFT UTILISATION



Aircraft Sizes
 Widebody e.g. A330, A350, B777
 Narrowbody e.g. A220, A32S, B737
 Regional Jet e.g. CRJ, ERJ, DH4