

START OF SEASON REPORT ZURICH WINTER SEASON

27 OCTOBER 2024 - 29 MARCH 2025 (W24)

2024

KEY FIGURES	W23	W24	+/-
Cleared Airport Slots	85,837	90,308	5.2%
Seats offered (1000)	15,448	16,689	8.0%
Seats per Airport Slot	180	185	2.7%
Runway Utilisation	52.6%	55.4%	2.7%
Number of Carriers	54	67	+13

TABLE OF CONTENTS

Page

Overview Main Carriers	2
Runway Histograms	3,4
Slot Shares	5
Traffic Flows, Aircraft Utilisation	6

GLOSSARY OF TERMS

Allocation	The allocation of slots within declared capacity limits.
Capacity Limits	Limiting parameters declared by the Airport Operator used in the coordination process.
Seats	The number of seats based on the aircraft configuration advised by the airline.

GUIDE TO HISTOGRAMS

The histograms show the pattern of traffic by time of day against the appropriate capacity limit. Each time period consists of seven columns representing the days-of-week, Monday through Sunday. All histograms are based on a reference week. For Winter 2024 the reference week is 10-16 February 2025.

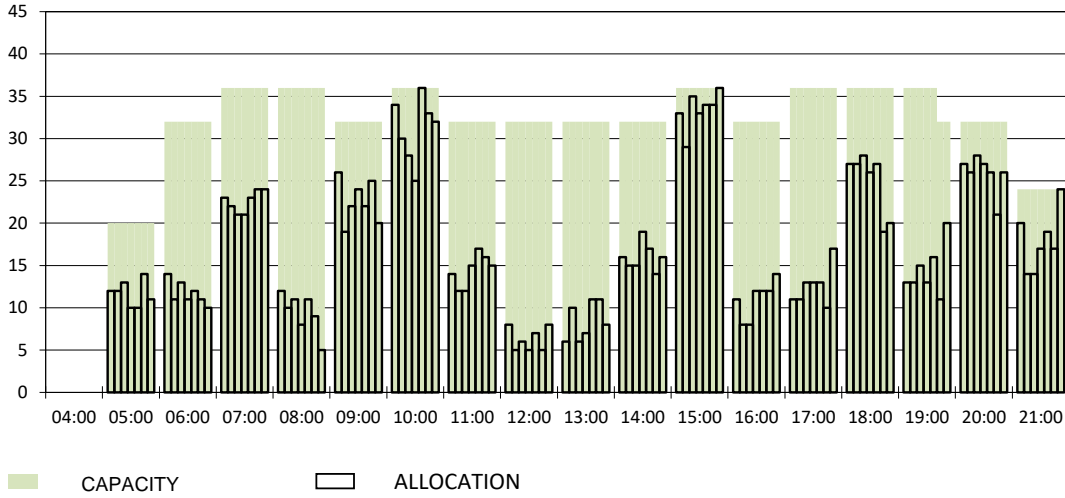
OVERVIEW MAIN CARRIERS

Number of average slots per week

	START OF SEASON				SLOT RETURN			
	W23	W24	+/-	Share	W23	W24	+/-	Share
ALL CARRIERS	3902	4105	5.2%		3917	4098	4.6%	
Swiss Carriers	2497	2617	4.8%	63.8%	2500	2602	4.1%	63.5%
<i>where of</i>								
Swiss International Air Lines	2167	2261	4.3%	55.1%	2174	2247	3.4%	54.8%
Edelweiss Air	269	291	8.2%	7.1%	265	281	6.0%	6.9%
Chair Airlines	58	62	6.9%	1.5%	59	72	22.0%	1.8%
Helvetic	3	3	0.0%	0.1%	2	2		0.0%
Foreign Carriers	1405	1488	5.9%	36.2%	1417	1496	5.6%	36.5%
<i>where of</i>								
Lufthansa	123	125	1.6%	3.0%	123	125	1.6%	3.1%
British Airways, BACF	113	119	5.3%	2.9%	113	115	1.8%	2.8%
Eurowings	91	110	20.9%	2.7%	93	111	19.4%	2.7%
Easyjet	76	96	26.3%	2.3%	73	98	34.2%	2.4%
KLM	82	83	1.2%	2.0%	82	83	1.2%	2.0%
Austrian Airlines	63	64	1.6%	1.6%	63	64	1.6%	1.6%
Turkish Airlines	68	62	-8.8%	1.5%	68	62	-8.8%	1.5%
TAP Air Portugal	52	52	0.0%	1.3%	52	52	0.0%	1.3%
SAS	55	51	-7.3%	1.2%	56	51	-8.9%	1.2%
Iberia	45	51	13.3%	1.2%	45	50	11.1%	1.2%
Maj. foreign Carriers	768	813	5.9%	19.8%	768	811	5.6%	19.8%

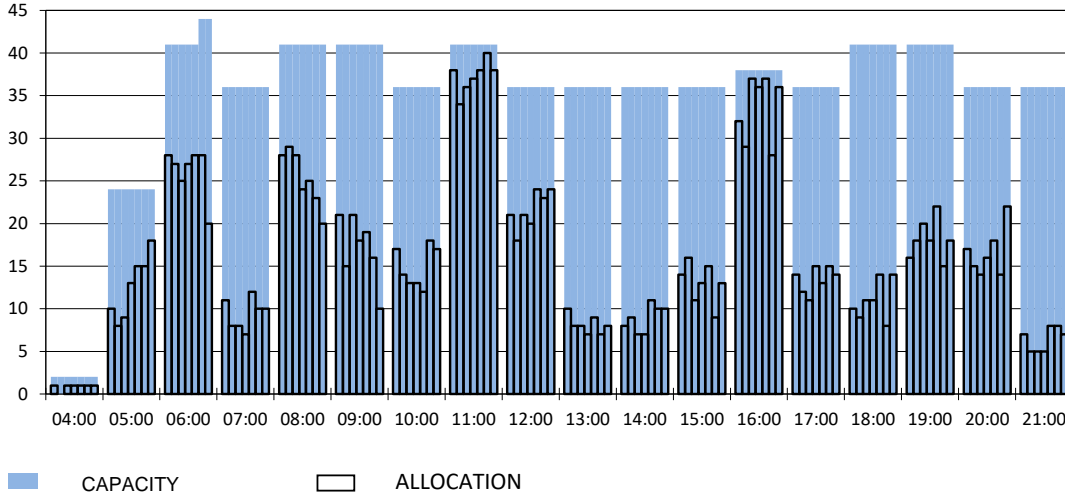
RUNWAY MOVEMENT START OF SEASON - ARRIVALS

Reference week, movements per hour - all times UTC



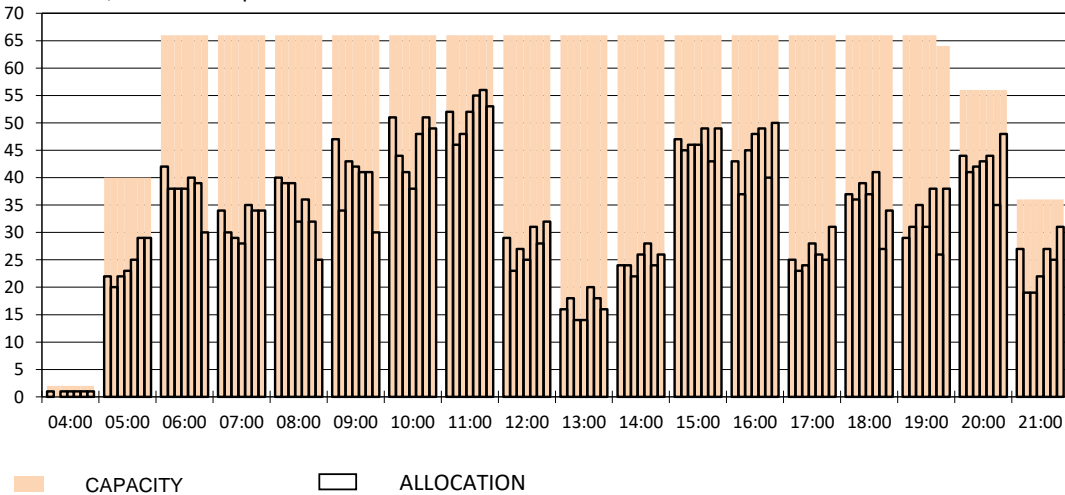
RUNWAY MOVEMENT START OF SEASON - DEPARTURES

Reference week, movements per hour - all times UTC



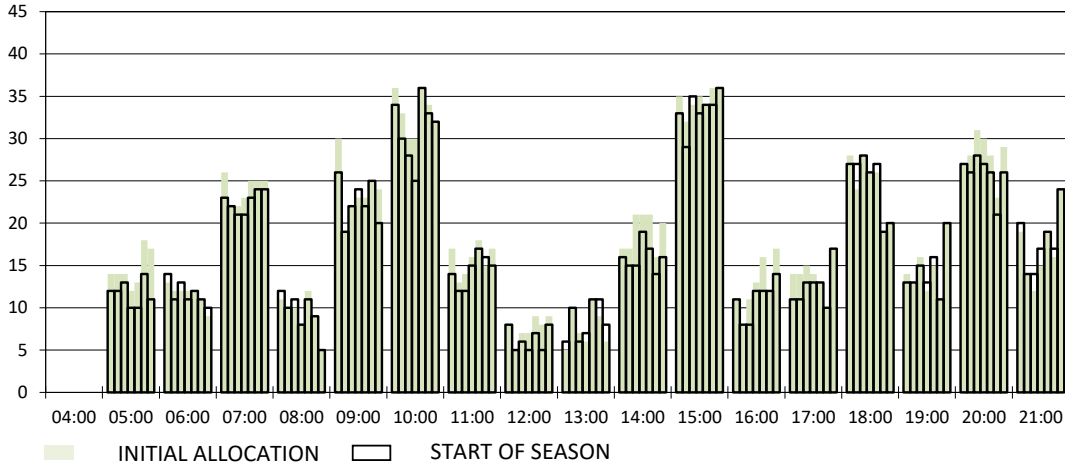
RUNWAY MOVEMENT START OF SEASON - TOTALS

Reference week, movements per hour - all times UTC



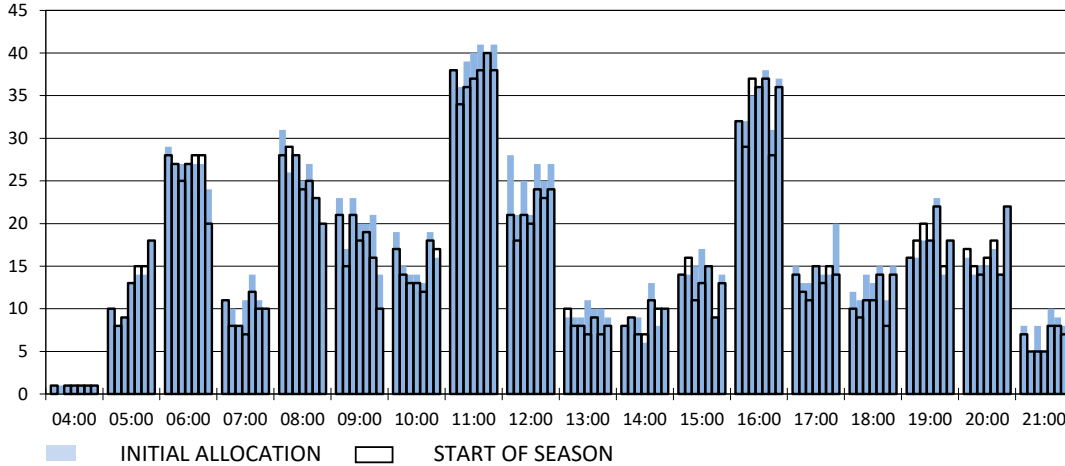
RUNWAY MOVEMENT DEVELOPMENT INITIAL ALLOCATION TO START OF SEASON - ARRIVALS

Reference week, movements per hour - all times UTC



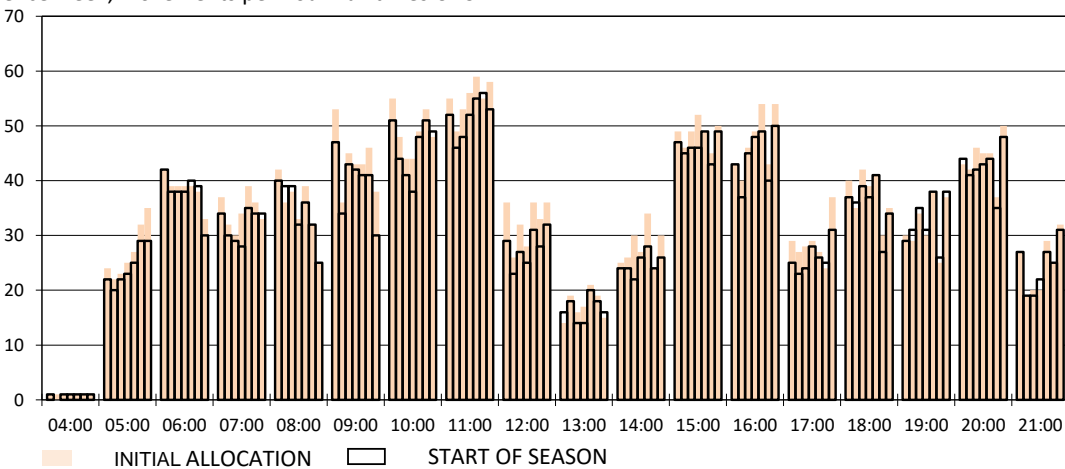
RUNWAY MOVEMENT DEVELOPMENT INITIAL ALLOCATION TO START OF SEASON - DEPARTURES

Reference week, movements per hour - all times UTC

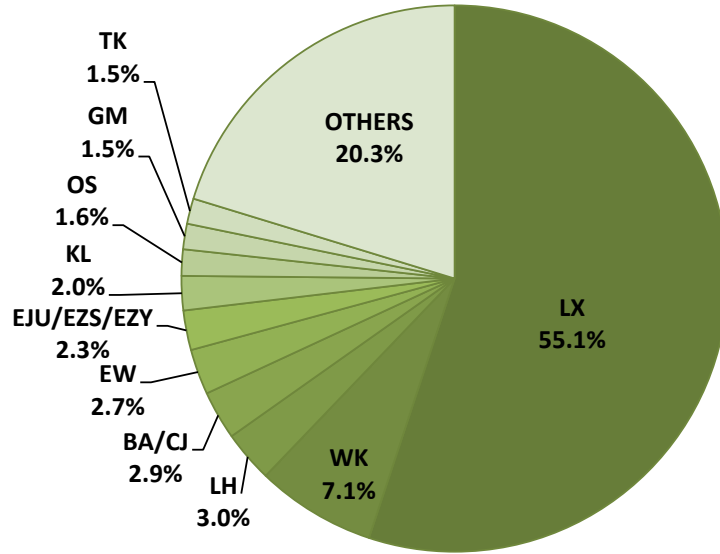


RUNWAY MOVEMENT DEVELOPMENT INITIAL ALLOCATION TO START OF SEASON - TOTALS

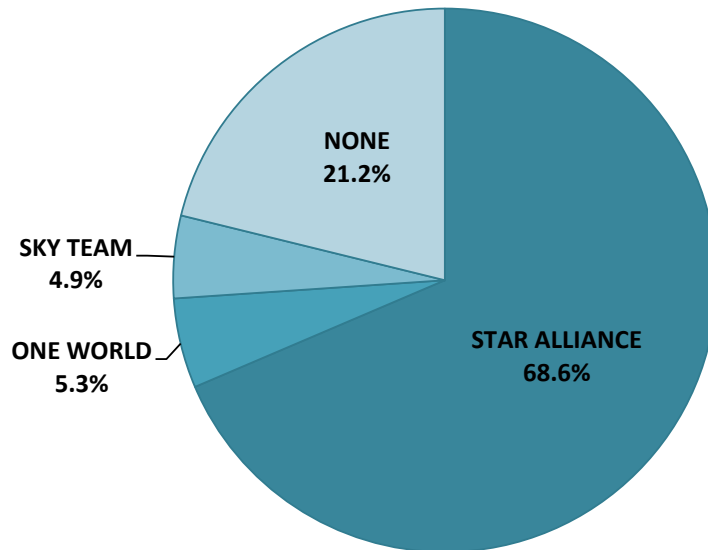
Reference week, movements per hour - all times UTC



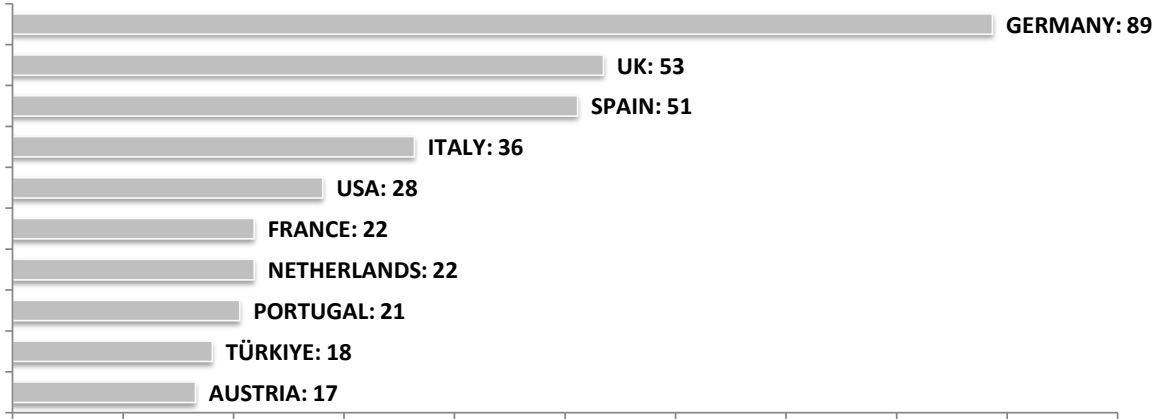
SEASONAL SLOT SHARE - 10 TOP CARRIER



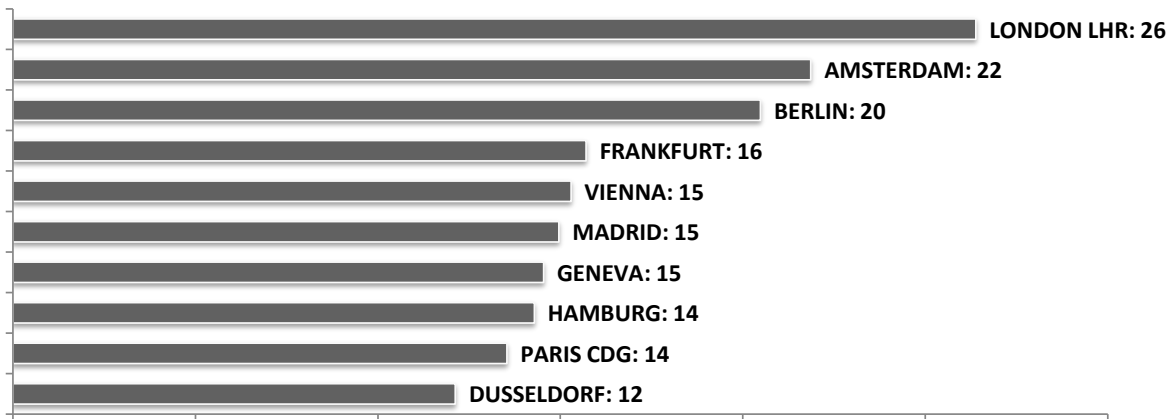
SEASONAL SLOT SHARE - PER ALLIANCES



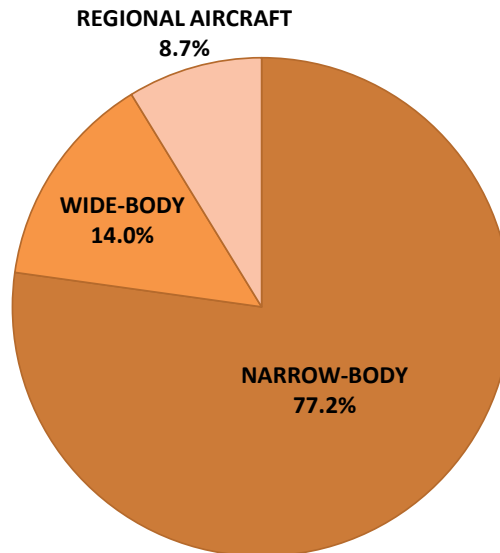
TOP 10 COUNTRIES - Number of Daily Slots



TOP 10 ROUTES - Number of Daily Slots



AIRCRAFT UTILISATION



Aircraft Sizes
 Widebody e.g. A330, B767, B777
 Narrowbody e.g. A220, A32S, B737
 Regional Aircraft e.g. CRJ, ERJ, DH4