

START OF SEASON REPORT GENEVA WINTER SEASON

27 OCTOBER 2024 - 29 MARCH 2025 (W24)

2024

KEY FIGURES	W23	W24	+/-
Cleared Airport Slots	59,079	58,113	-1.6%
Seats (1000)	10,208	10,172	-0.4%
Seats per Airport Slot	173	175	1.2%
Runway Utilisation Days 1-5	65.9%	65.4%	-0.5%
Runway Utilisation Day 6	86.6%	84.9%	-1.7%
Runway Utilisation Day 7	81.0%	80.9%	-0.1%
Number of Carriers	61	58	-3

TABLE OF CONTENTS

	Page
Overview Main Carriers	2
Runway Histograms	3
Terminal Histograms	4
Slot Shares	5
Traffic Flows, Aircraft Utilisation	6

GLOSSARY OF TERMS

Allocation	The allocation of slots within declared capacity limits.
Capacity Limits	Limiting parameters declared by the Airport Operator used in the coordination process.
Seats	The number of seats based on the aircraft configuration advised by the airline.

GUIDE TO HISTOGRAMS

The histograms show the pattern of traffic by time of day against the appropriate capacity limit. Each time period consists of seven columns representing the days-of-week, Monday through Sunday. All histograms are based on a reference week.

For Winter 2024 the reference week is 10-16 February 2025.

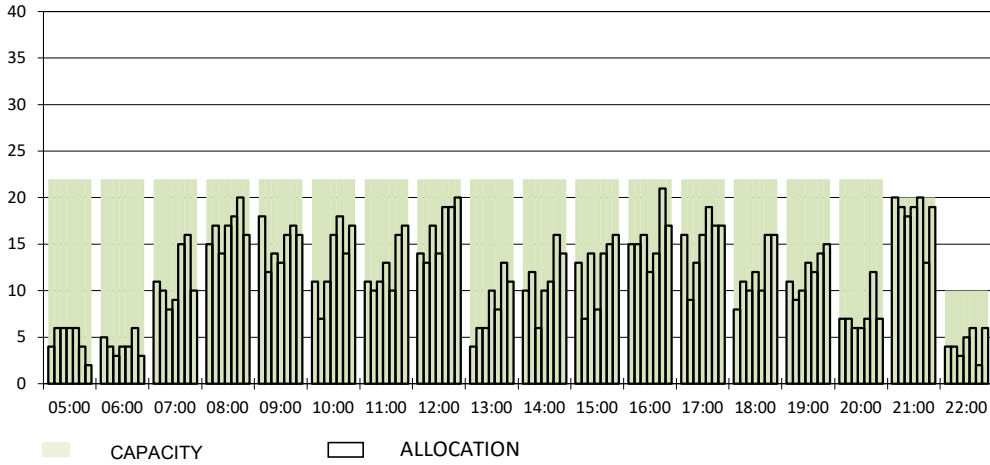
OVERVIEW MAIN CARRIERS

Number of average slots per week

	START OF SEASON				SLOT RETURN			
	W23	W24	+/-	Share	W23	W24	+/-	Share
ALL CARRIERS	2685	2642	-1.6%		2735	2648	-3.2%	
Swiss Carriers	986	953	-3.3%	36.1%	1012	952	-5.9%	36.0%
<i>where of</i>								
EasyJet Switzerland	589	579	-1.7%	21.9%	593	576	-2.9%	21.8%
Swiss International Air Lines	397	374	-5.8%	14.2%	419	376	-10.3%	14.2%
Foreign Carriers	1699	1689	-0.6%	63.9%	1723	1696	-1.6%	64.0%
<i>where of</i>								
EasyJet Europe & UK	442	414	-6.3%	15.7%	440	413	-6.1%	15.6%
British Airways / BA EuroFlyer / BA CityFlyer	189	178	-5.8%	6.7%	190	180	-5.3%	6.8%
Air France	109	109	0.0%	4.1%	124	110	-11.3%	4.2%
KLM	83	84	1.2%	3.2%	84	84	0.0%	3.2%
Air Dolomiti	25	79	216.0%	3.0%	25	80	220.0%	3.0%
Iberia	70	73	4.3%	2.8%	71	73	2.8%	2.8%
TAP Air Portugal	52	52	0.0%	2.0%	52	52	0.0%	2.0%
Lufthansa	67	51	-23.9%	1.9%	67	52	-22.4%	2.0%
Turkish Airlines	42	42	0.0%	1.6%	42	42	0.0%	1.6%
Brussels Airlines	40	39	-2.5%	1.5%	40	39	-2.5%	1.5%
Maj. foreign Carriers	1119	1121	0.2%	42.4%	1135	1125	-0.9%	42.5%

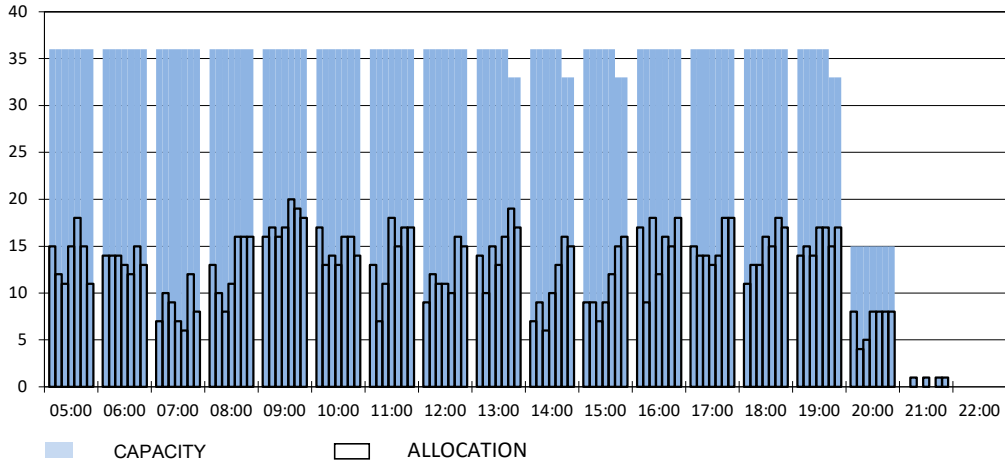
RUNWAY MOVEMENT START OF SEASON - ARRIVALS

Reference week, movements per hour - all times UTC



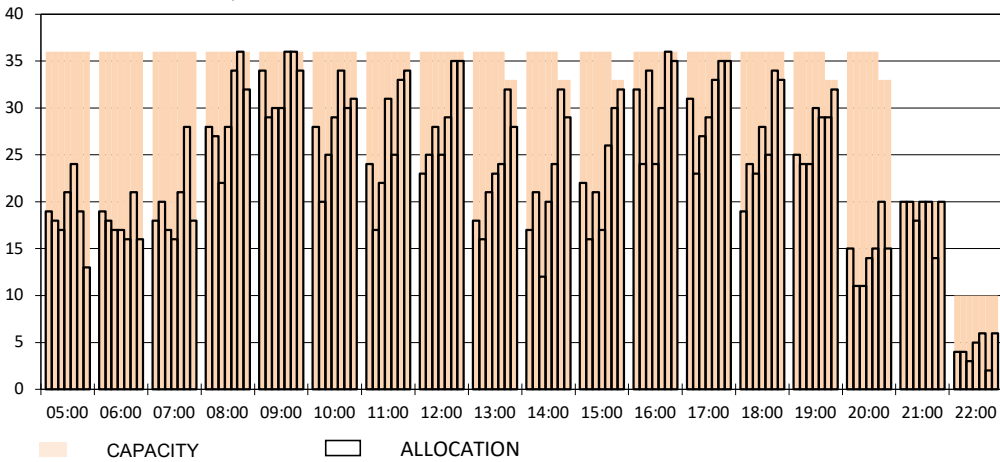
RUNWAY MOVEMENT START OF SEASON - DEPARTURES

Reference week, movements per hour - all times UTC



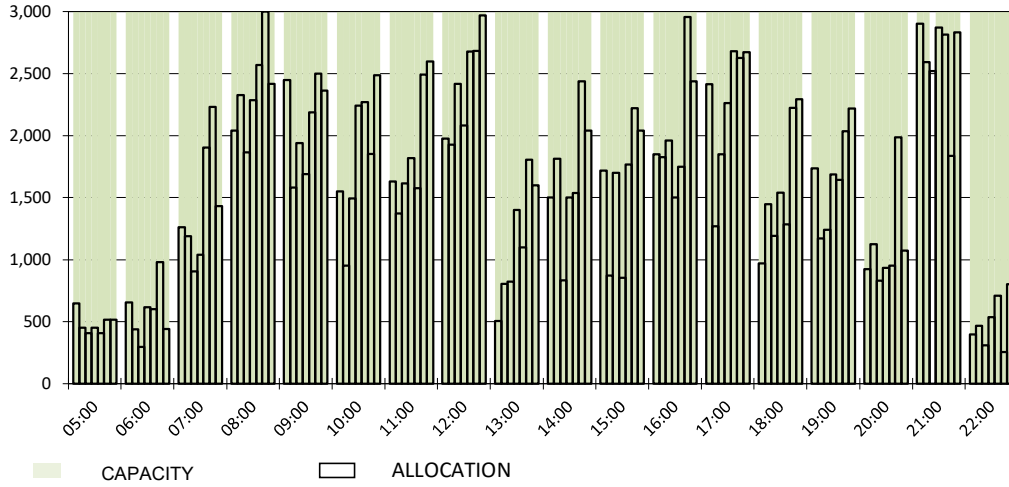
RUNWAY MOVEMENT START OF SEASON - TOTALS

Reference week, movements per hour - all times UTC



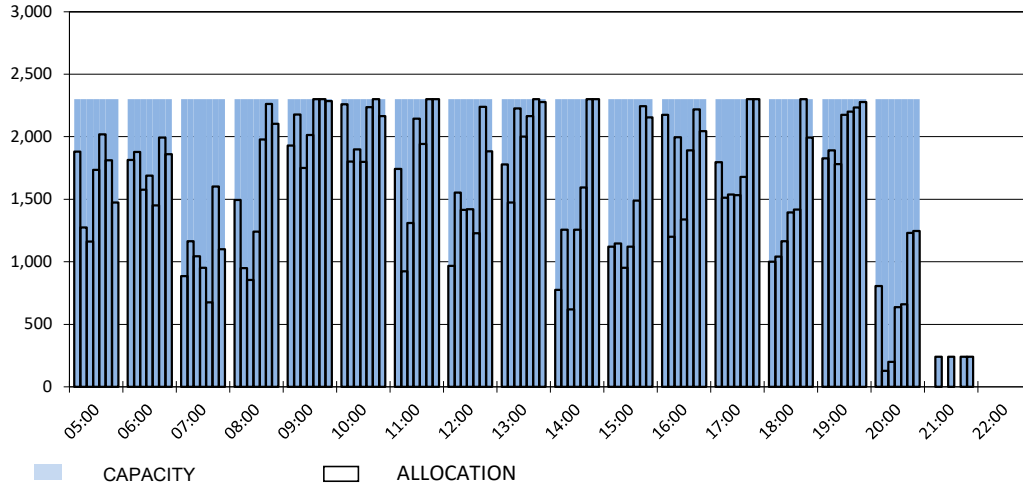
MAIN TERMINAL START OF SEASON - ARRIVALS

Reference week, movements per hour - all times UTC



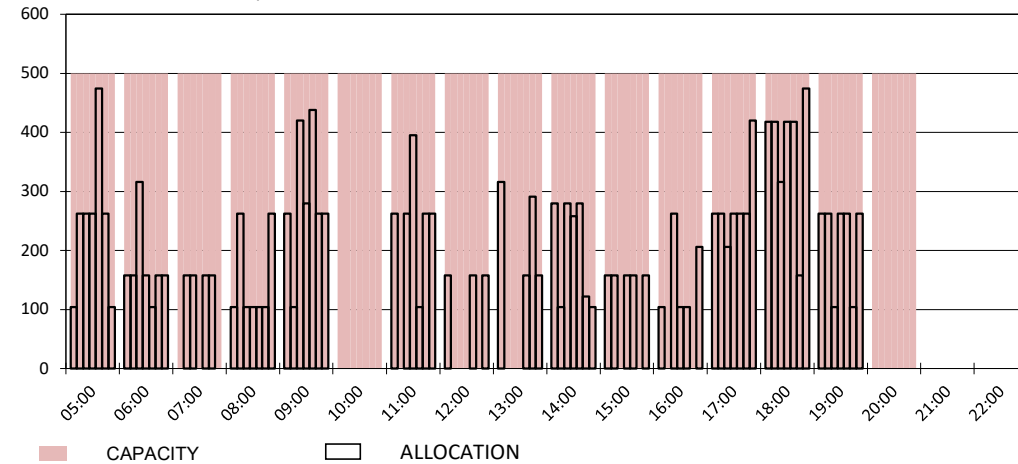
MAIN TERMINAL START OF SEASON - DEPARTURES

Reference week, movements per hour - all times UTC

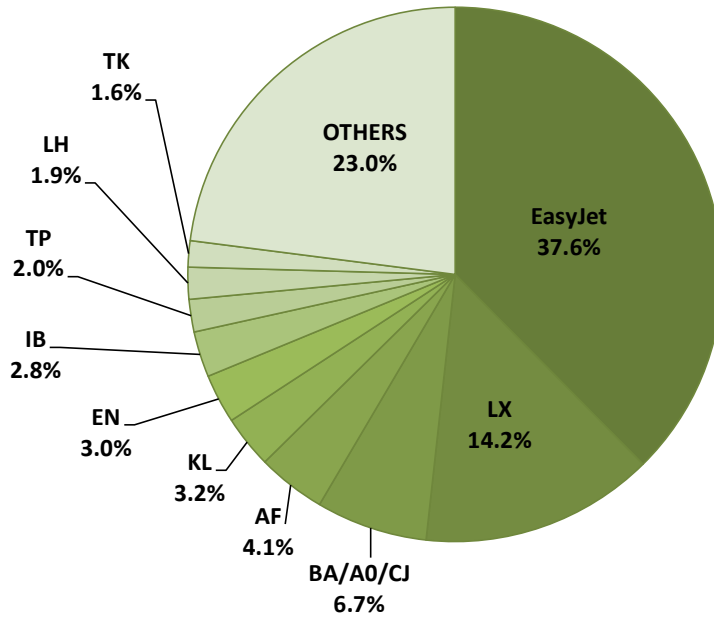


FRENCH SECTOR TERMINAL START OF SEASON - DEPARTURES

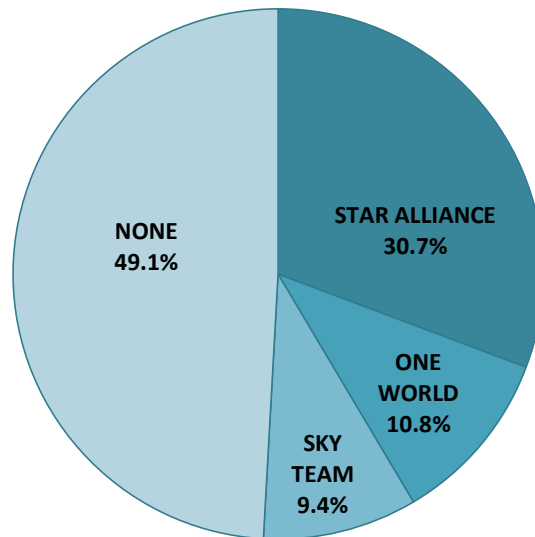
Reference week, movements per hour - all times UTC



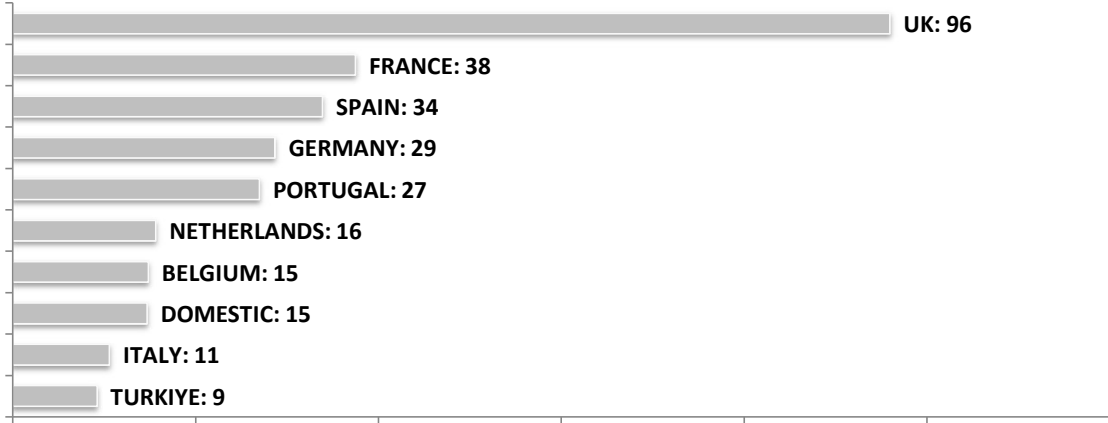
SEASONAL SLOT SHARE - 10 TOP CARRIER



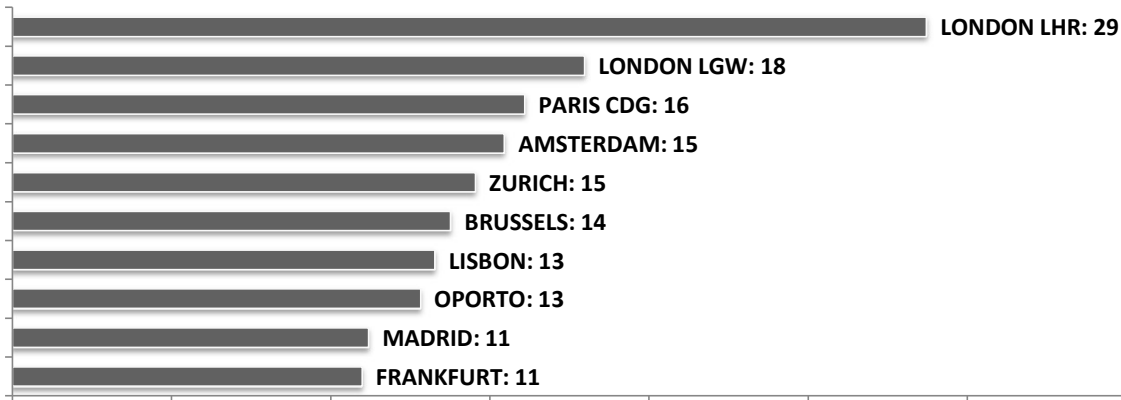
SEASONAL SLOT SHARE - PER ALLIANCES



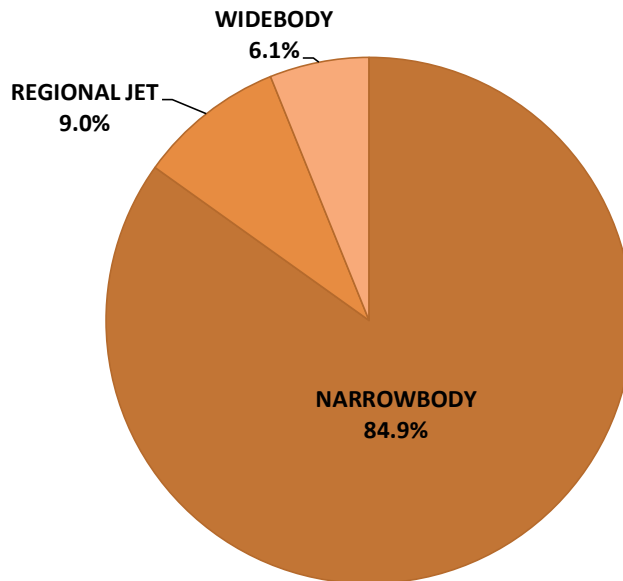
TOP 10 COUNTRIES - Number of Daily Slots



TOP 10 ROUTES - Number of Daily Slots



AIRCRAFT UTILISATION



Aircraft Sizes
Widebody e.g. A330, A350, B777
Narrowbody e.g. A220, A32S, B737
Regional Jet e.g. CRJ, ERJ, DH4