

START OF SEASON REPORT ZURICH SUMMER SEASON

30 MARCH - 25 OCTOBER 2025 (S25)

2025

KEY FIGURES	S24	S25	+/-
Cleared Airport Slots	147,258	152,572	3.6%
Seats offered (1000)	25,753	27,760	7.8%
Seats per Airport Slot	175	182	4.0%
Runway Utilisation	66.2%	68.6%	2.4%
Number of Carriers	76	83	+7

TABLE OF CONTENTS

	Page
Overview Main Carriers	2
Runway Histograms	3,4
Slot Shares	5
Traffic Flows, Aircraft Utilisation	6

GLOSSARY OF TERMS

Allocation	The allocation of slots within declared capacity limits.
Capacity Limits	Limiting parameters declared by the Airport Operator used in the coordination process.
Seats	The number of seats based on the aircraft configuration advised by the airline.

GUIDE TO HISTOGRAMS

The histograms show the pattern of traffic by time of day against the appropriate capacity limit. Each time period consists of seven columns representing the days-of-week, Monday through Sunday. All histograms are based on a reference week. For Summer 2025 the reference week is 15-21 September 2025.

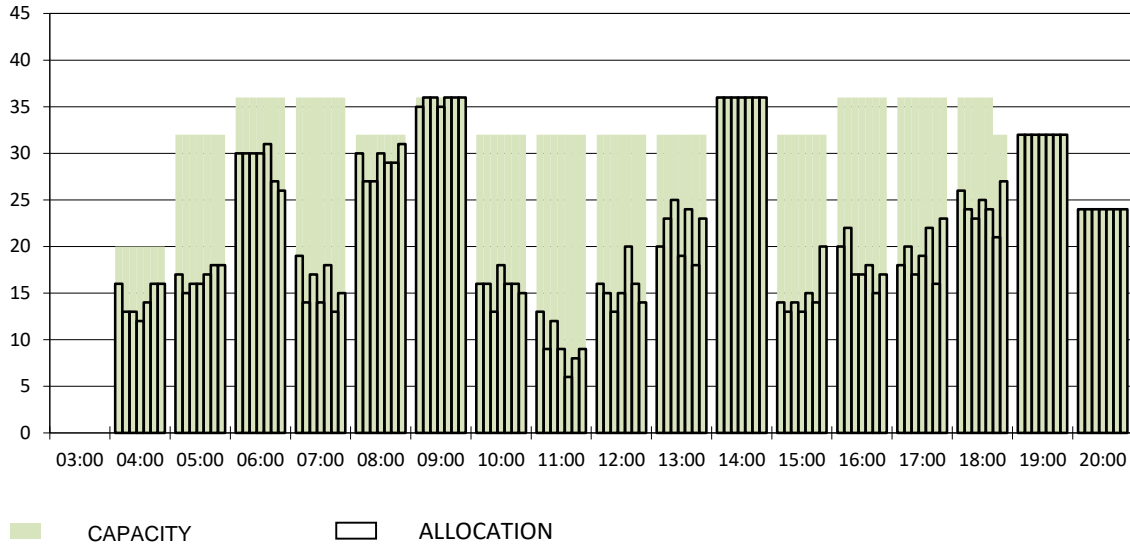
OVERVIEW MAIN CARRIERS

Number of average slots per week

	START OF SEASON				SLOT RETURN			
	S24	S25	+/-	Share	S24	S25	+/-	Share
ALL CARRIERS	4909	5086	3.6%		4927	5080	3.1%	
Swiss Carriers	3230	3273	1.3%	64.4%	3233	3273	1.2%	64.4%
<i>where of</i>								
Swiss International Air Lines	2657	2661	0.2%	52.3%	2660	2676	0.6%	52.7%
Edelweiss Air	473	506	7.0%	9.9%	471	499	5.9%	9.8%
Chair Airlines	94	104	10.6%	2.0%	95	96	1.1%	1.9%
Helvetic	6	2	-66.7%	0.0%	7	2	-71.4%	0.0%
Foreign Carriers	1679	1813	8.0%	35.6%	1694	1807	6.7%	35.6%
<i>where of</i>								
Easyjet	85	166	95.3%	3.3%	79	166	110.1%	3.3%
Eurowings	133	135	1.5%	2.7%	135	135	0.0%	2.7%
British Airways, BACF	91	86	-5.5%	1.7%	92	86	-6.5%	1.7%
KLM	81	83	2.5%	1.6%	82	83	1.2%	1.6%
Austrian Airlines	77	76	-1.3%	1.5%	77	77	0.0%	1.5%
Lufthansa	139	70	-49.6%	1.4%	140	84	-40.0%	1.7%
Turkish Airlines	62	67	8.1%	1.3%	76	62	-18.4%	1.2%
Condor	31	58	87.1%	1.1%	34	59	73.5%	1.2%
SunExpress	59	58	-1.7%	1.1%	59	59	0.0%	1.2%
SAS	47	54	14.9%	1.1%	46	54	17.4%	1.1%
Maj. foreign Carriers	805	853	6.0%	16.8%	820	865	5.5%	17.0%

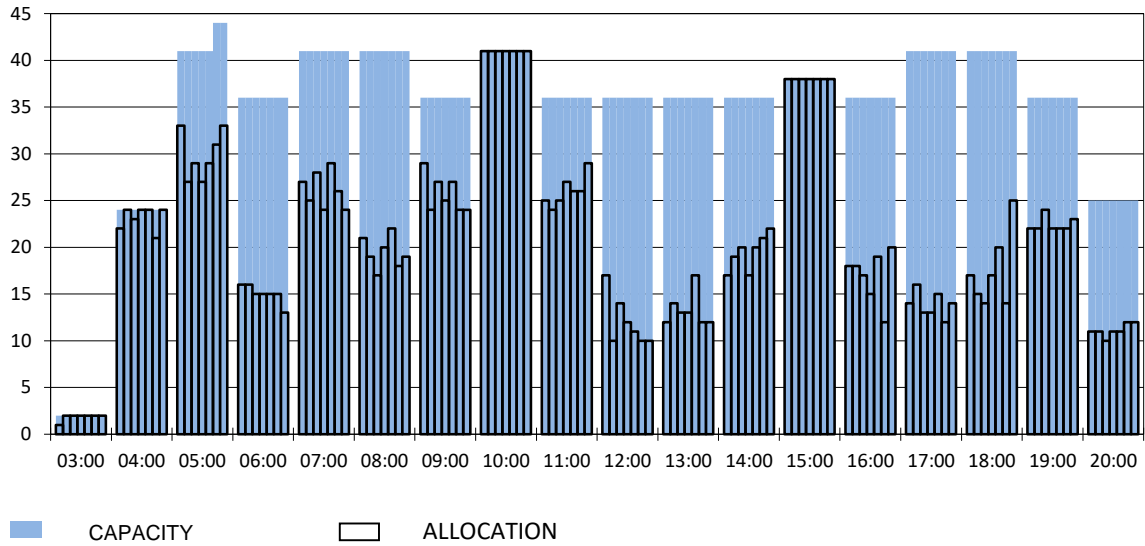
RUNWAY MOVEMENT START OF SEASON - ARRIVALS

Reference week, movements per hour - all times UTC



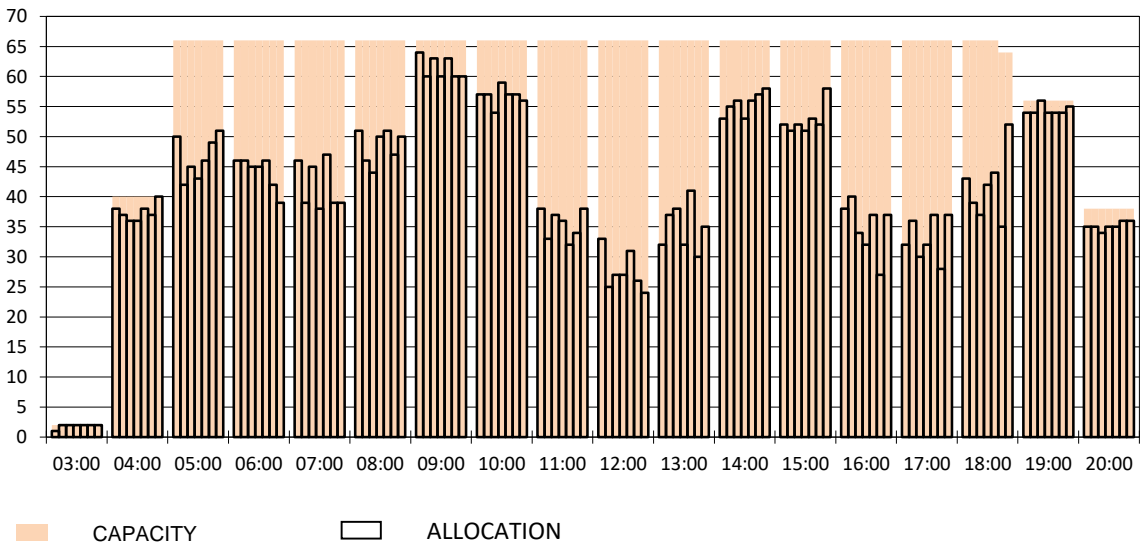
RUNWAY MOVEMENT START OF SEASON - DEPARTURES

Reference week, movements per hour - all times UTC



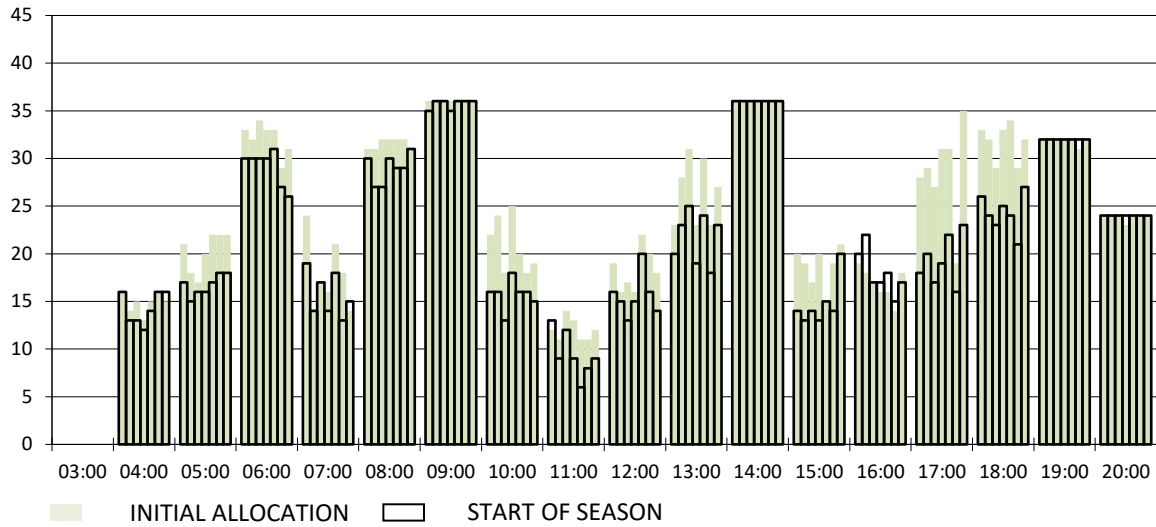
RUNWAY MOVEMENT START OF SEASON - TOTALS

Reference week, movements per hour - all times UTC



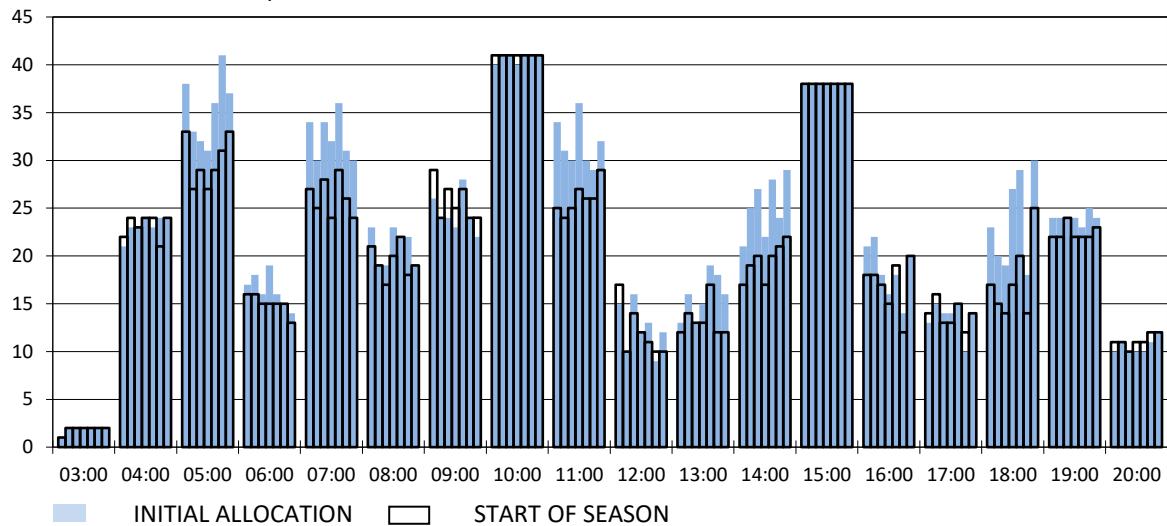
RUNWAY MOVEMENT DEVELOPMENT INITIAL ALLOCATION TO START OF SEASON - ARRIVALS

Reference week, movements per hour - all times UTC



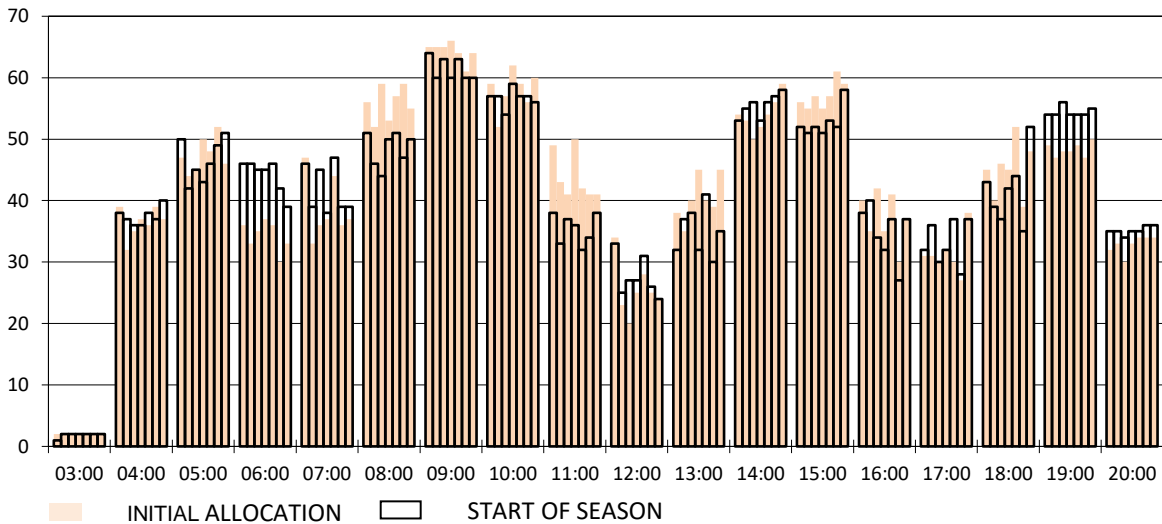
RUNWAY MOVEMENT DEVELOPMENT INITIAL ALLOCATION TO START OF SEASON - DEPARTURES

Reference week, movements per hour - all times UTC

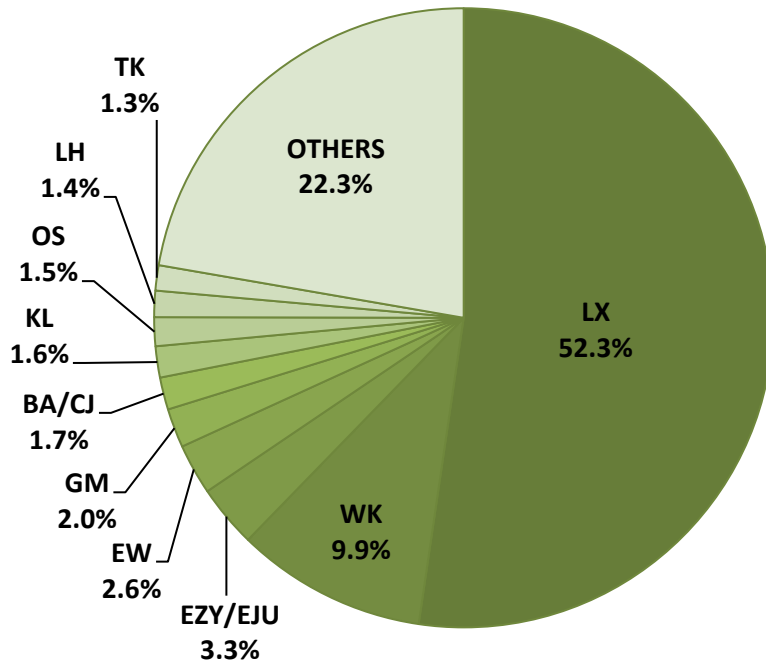


RUNWAY MOVEMENT DEVELOPMENT INITIAL ALLOCATION TO START OF SEASON - TOTALS

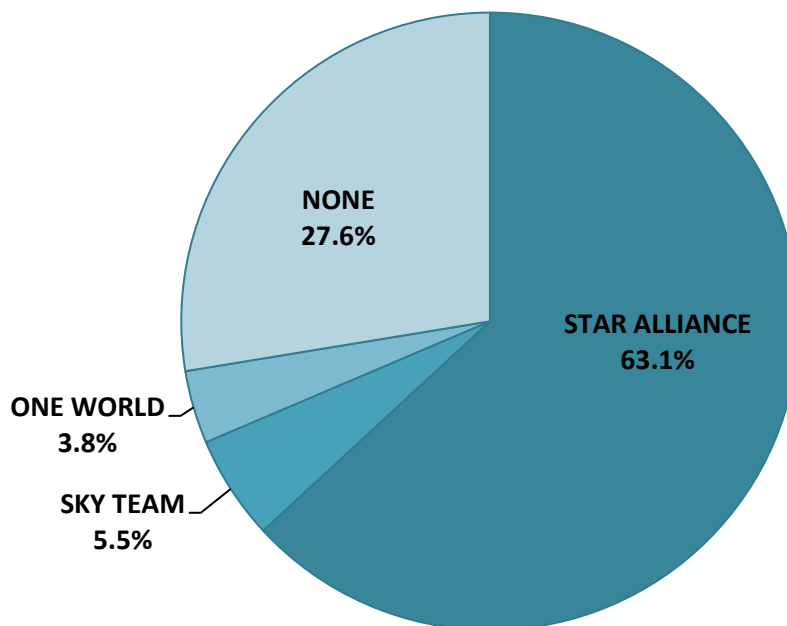
Reference week, movements per hour - all times UTC



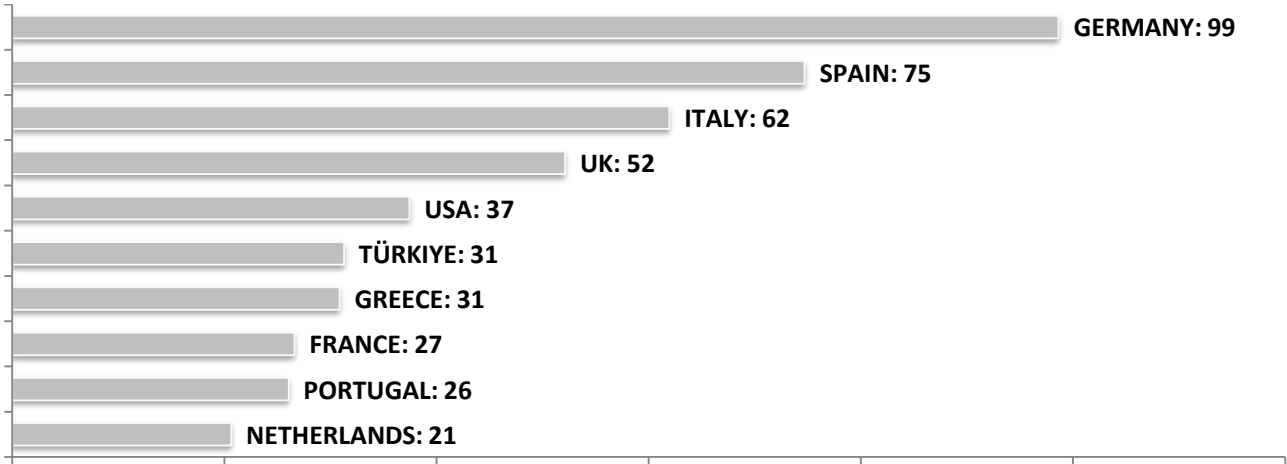
SEASONAL SLOT SHARE - 10 TOP CARRIER



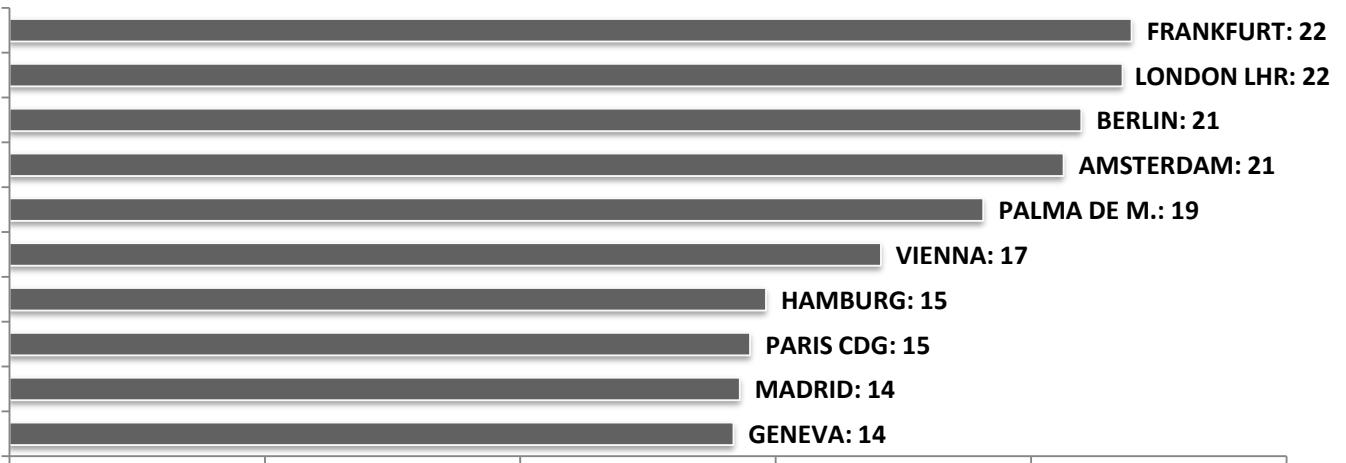
SEASONAL SLOT SHARE - PER ALLIANCES



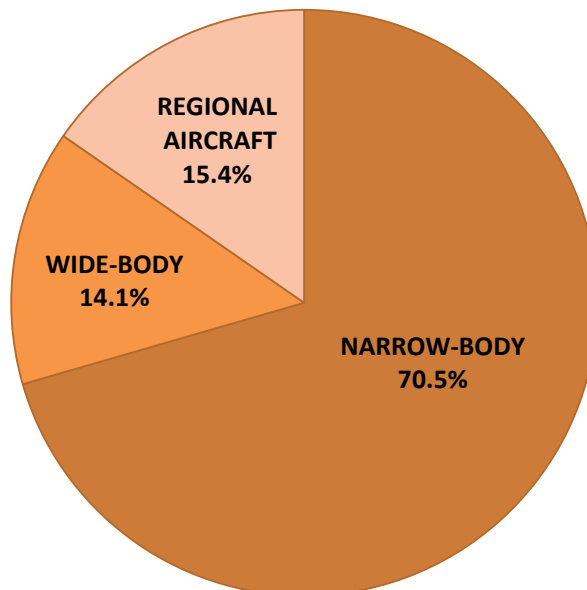
TOP 10 COUNTRIES - Number of Daily Slots



TOP 10 ROUTES - Number of Daily Slots



AIRCRAFT UTILISATION



Aircraft Sizes

- Widebody e.g. A330, A350, B777
- Narrowbody e.g. A220, A32S, B737
- Regional Aircraft e.g. CRJ, ERJ, DH4