

START OF SEASON REPORT GENEVA SUMMER SEASON

30 MARCH - 25 OCTOBER 2025 (S25)

2025

| KEY FIGURES | S24 | S25 | +/- |
|------------------------|--------|--------|-------|
| Airport Slots | 83,379 | 80,052 | -4.0% |
| Seats offered (1000) | 14,199 | 13,996 | -1.4% |
| Seats per Airport Slot | 170 | 175 | 2.8% |
| Runway Utilisation | 65.5% | 62.9% | -2.6% |
| Number of Carriers | 62 | 60 | -2 |

TABLE OF CONTENTS

| | Page |
|-------------------------------------|------|
| Management Summary | 2 |
| Overview Main Carriers | 3 |
| Runway Histograms | 4 |
| Terminal Histograms | 5 |
| Slot Shares | 6 |
| Traffic Flows, Aircraft Utilisation | 7 |

GLOSSARY OF TERMS

| | |
|------------------------|--|
| Allocation | The allocation of slots within declared capacity limits. |
| Capacity Limits | Limiting parameters declared by the Airport Operator used in the coordination process. |
| Seats | The number of seats based on the aircraft configuration advised by the airline. |

GUIDE TO HISTOGRAMS

The histograms show the pattern of traffic by time of day against the appropriate capacity limit. Each time period consists of seven columns representing the days-of-week, Monday through Sunday. All histograms are based on a reference week. For Summer 2025 the reference week is 15-21 September 2025.

OVERVIEW MAIN CARRIERS

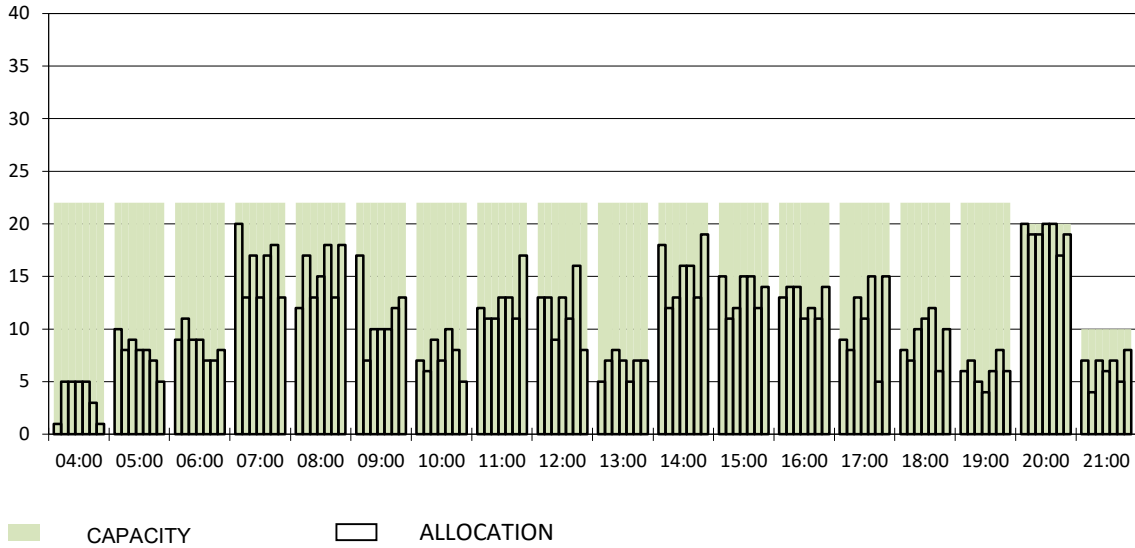
Number of average slots per week

| | START OF SEASON | | | |
|--|-----------------|------|--------|-------|
| | S24 | S25 | +/- | Share |
| ALL CARRIERS | 2779 | 2668 | -4.0% | |
| Swiss Carriers | 1230 | 1143 | -7.1% | 42.8% |
| <i>where of</i> | | | | |
| EasyJet Switzerland | 759 | 652 | -14.1% | 24.4% |
| Swiss International Air Lines | 471 | 491 | 4.2% | 18.4% |
| Foreign Carriers | 1549 | 1525 | -1.5% | 57.2% |
| <i>where of</i> | | | | |
| EasyJet Europe & UK | 365 | 405 | 11.0% | 15.2% |
| Air France | 97 | 98 | 1.0% | 3.7% |
| British Airways / BA Cityflyer /BA Euroflyer | 90 | 88 | -2.2% | 3.3% |
| KLM | 82 | 84 | 2.4% | 3.1% |
| Iberia | 72 | 73 | 1.4% | 2.7% |
| Brussels Airlines | 39 | 66 | 69.2% | 2.5% |
| TAP Air Portugal | 52 | 52 | 0.0% | 1.9% |
| Turkish Airlines | 42 | 46 | 9.5% | 1.7% |
| Austrian Airlines | 27 | 46 | 70.4% | 1.7% |
| Maj. foreign Carriers | 866 | 958 | 10.6% | 35.9% |

| SLOT RETURN | | | |
|-------------|------|--------|-------|
| S24 | S25 | +/- | Share |
| 2799 | 2708 | -3.3% | |
| 1225 | 1168 | -4.7% | 43.1% |
| 759 | 650 | -14.4% | 24.0% |
| 466 | 518 | 11.2% | 19.1% |
| 1574 | 1540 | -2.2% | 56.9% |
| 368 | 409 | 11.1% | 15.1% |
| 98 | 98 | 0.0% | 3.6% |
| 90 | 90 | 0.0% | 3.3% |
| 84 | 84 | 0.0% | 3.1% |
| 72 | 73 | 1.4% | 2.7% |
| 40 | 68 | 70.0% | 2.5% |
| 52 | 52 | 0.0% | 1.9% |
| 44 | 42 | -4.5% | 1.6% |
| 28 | 40 | 42.9% | 1.5% |
| 876 | 956 | 9.1% | 35.3% |

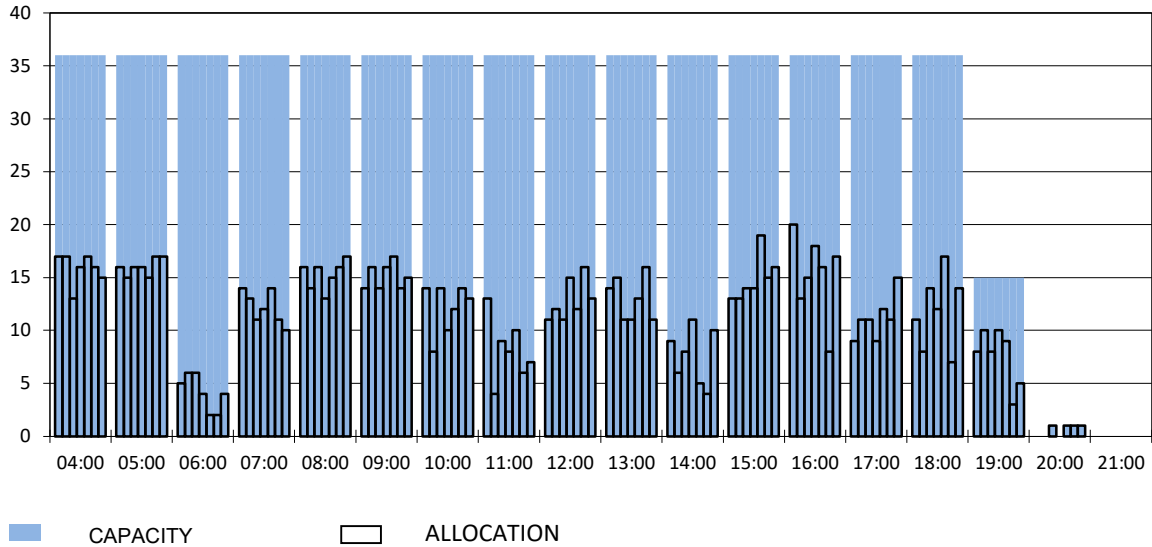
RUNWAY START OF SEASON - ARRIVALS

Reference week, movements per hour - all times UTC



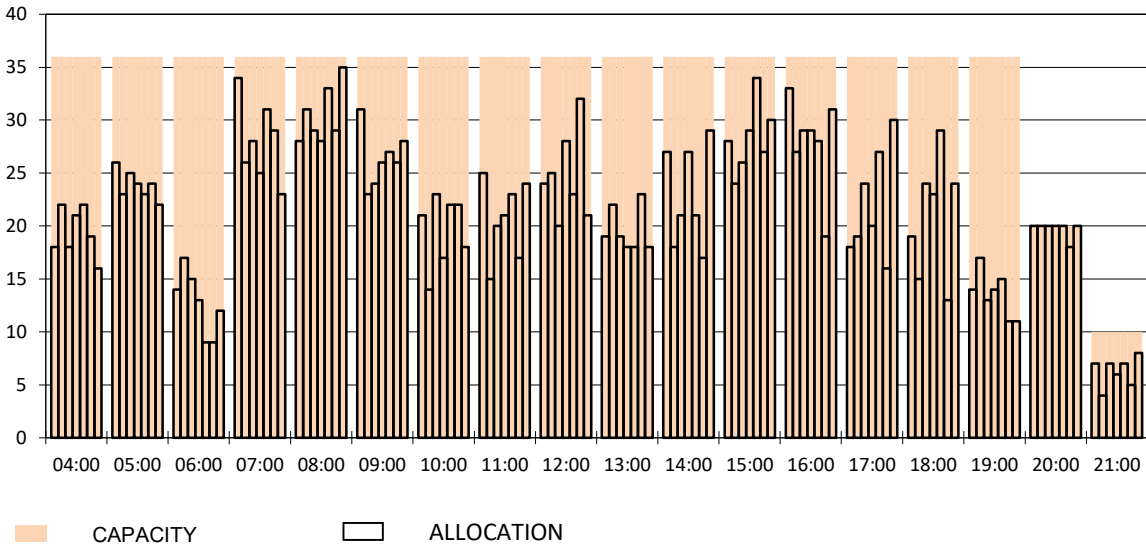
RUNWAY MOVEMENT START OF SEASON - DEPARTURES

Reference week, movements per hour - all times UTC



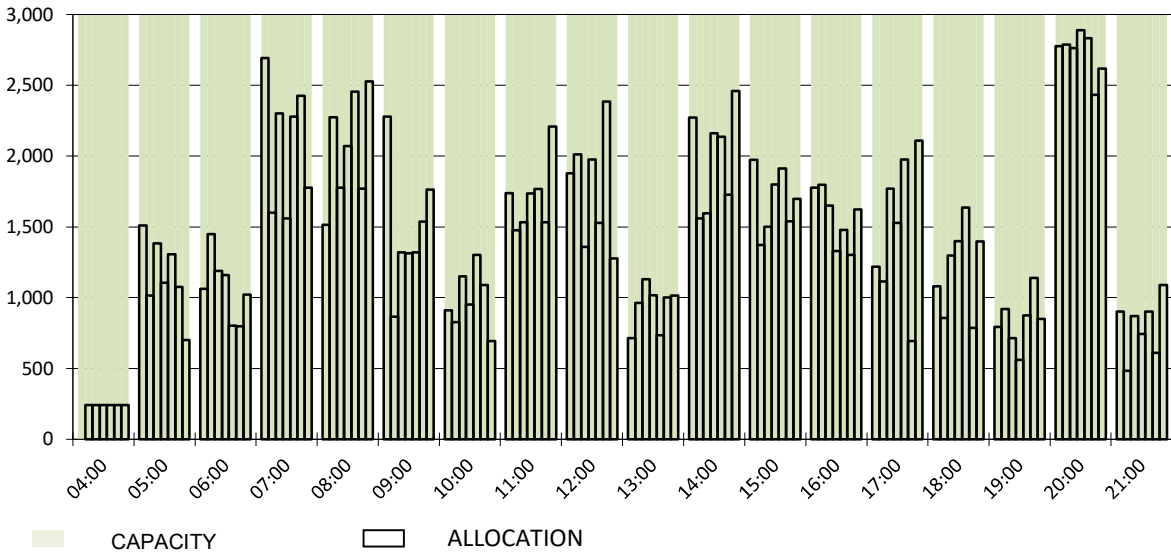
RUNWAY MOVEMENT START OF SEASON - TOTALS

Reference week, movements per hour - all times UTC



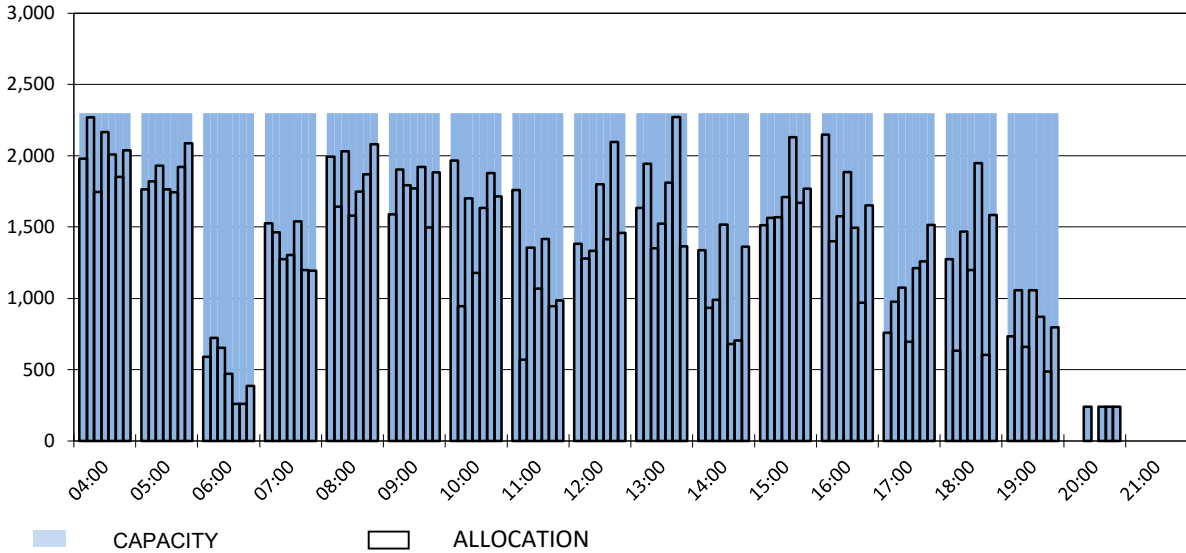
MAIN TERMINAL START OF SEASON - ARRIVALS

Reference week, passengers per hour - all times UTC



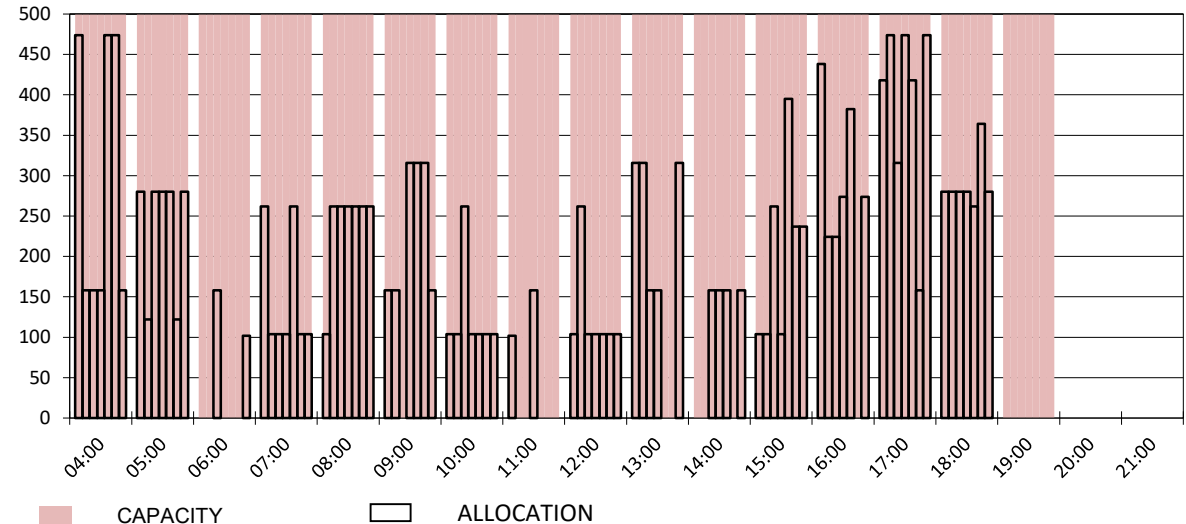
MAIN TERMINAL START OF SEASON - DEPARTURES

Reference week, passengers per hour - all times UTC

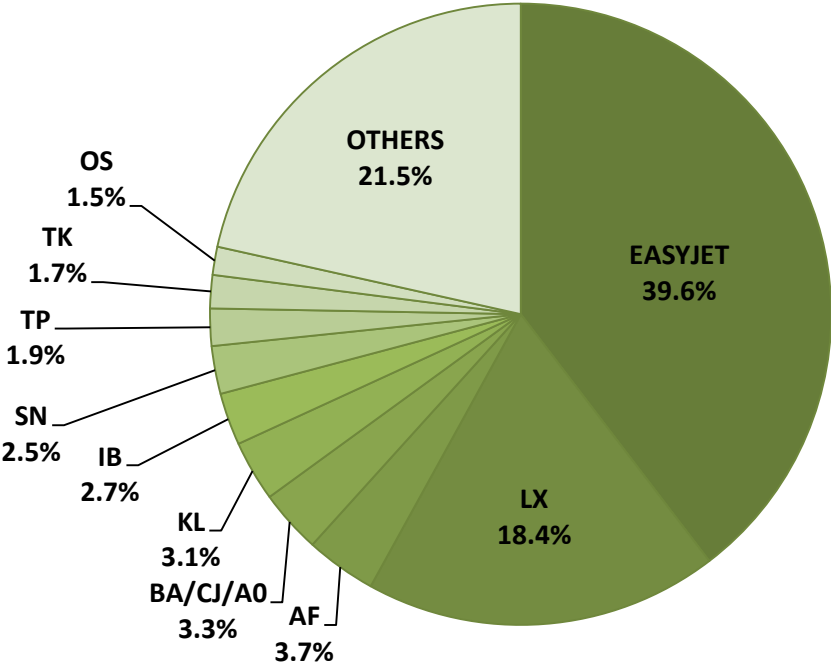


FRENCH SECTOR TERMINAL START OF SEASON - DEPARTURES

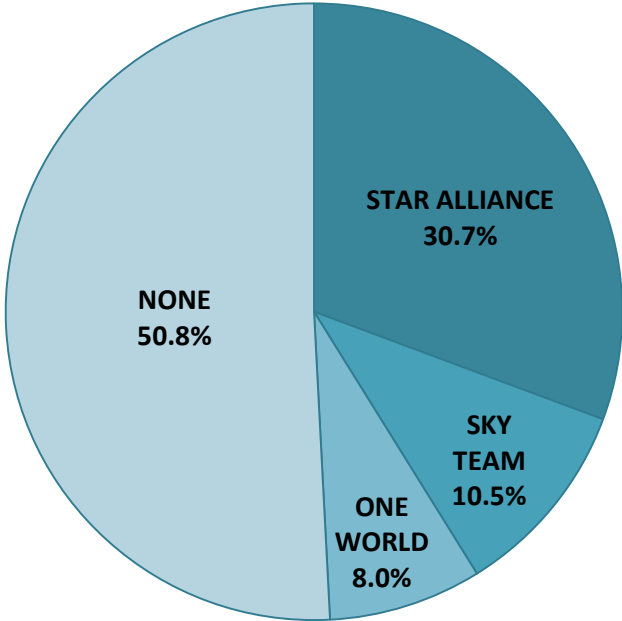
Reference week, passengers per hour - all times UTC



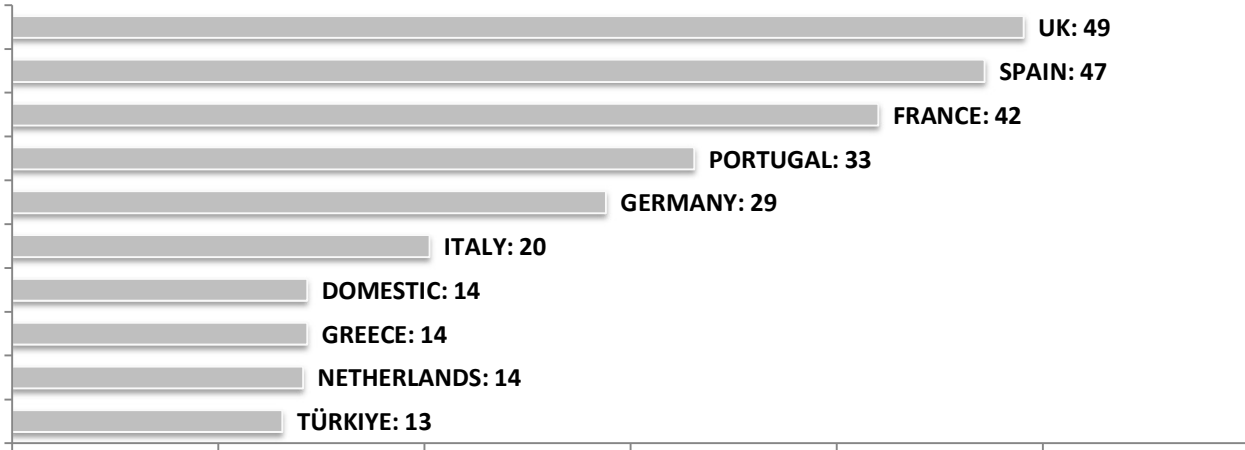
SEASONAL SLOT SHARE - 10 TOP CARRIER



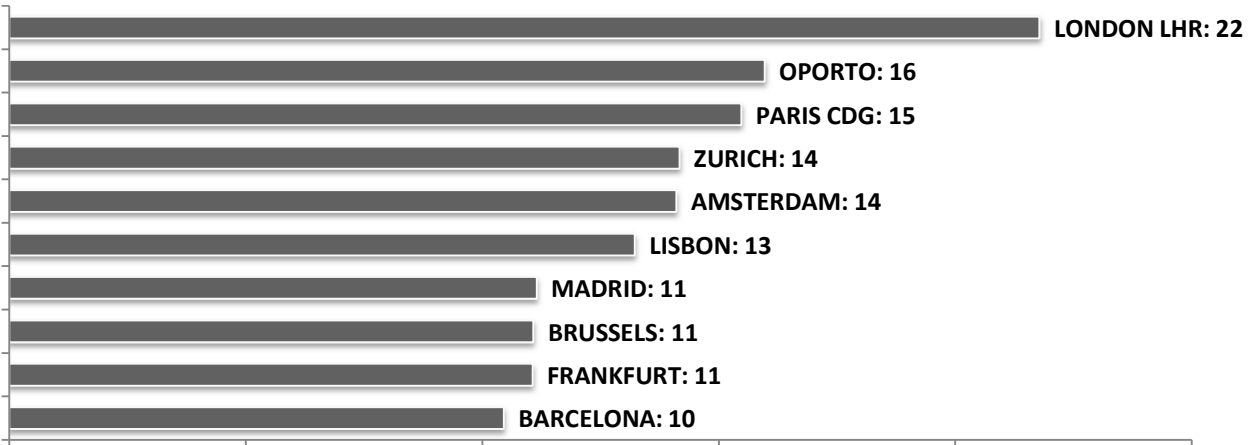
SEASONAL SLOT SHARE - PER ALLIANCES



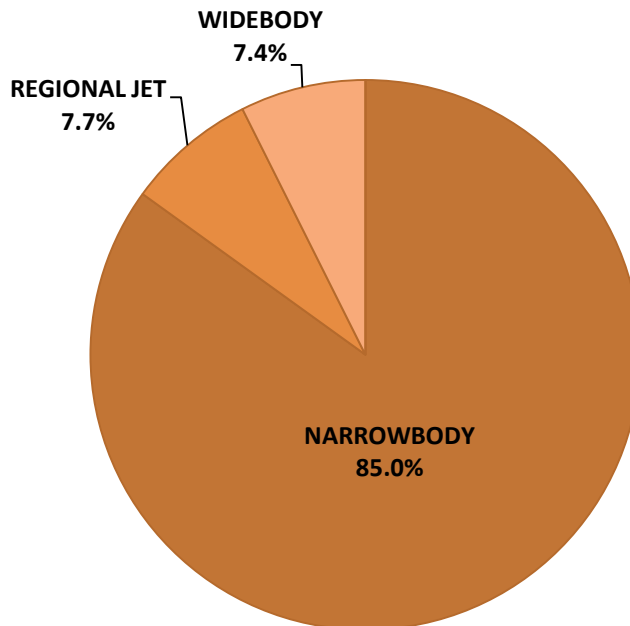
TOP 10 COUNTRIES - Number of Daily Slots



TOP 10 ROUTES - Number of Daily Slots



AIRCRAFT UTILISATION



Aircraft Sizes

- Widebody e.g. A330, A350, B777
- Narrowbody e.g. A220, A32S, B737
- Regional Jet e.g. CRJ, ERJ, DH4