

START OF SEASON REPORT ZURICH WINTER SEASON

26 OCTOBER 2025 - 28 MARCH 2026 (W25)

2025

KEY FIGURES	W24	W25	+/-
Cleared Airport Slots	90'308	94'177	4.3%
Seats offered (1000)	16'689	17'348	3.9%
Seats per Airport Slot	185	184	-0.3%
Runway Utilisation	55.4%	57.7%	2.4%
Number of Carriers	67	75	+8

TABLE OF CONTENTS

Page

Overview Main Carriers	2
Runway Histograms	3,4
Slot Shares	5
Traffic Flows, Aircraft Utilisation	6

GLOSSARY OF TERMS

Allocation	The allocation of slots within declared capacity limits.
Capacity Limits	Limiting parameters declared by the Airport Operator used in the coordination process.
Seats	The number of seats based on the aircraft configuration advised by the airline.

GUIDE TO HISTOGRAMS

The histograms show the pattern of traffic by time of day against the appropriate capacity limit. Each time period consists of seven columns representing the days-of-week, Monday through Sunday. All histograms are based on a reference week. For Winter 2025, the reference week is 09-15 February 2026.

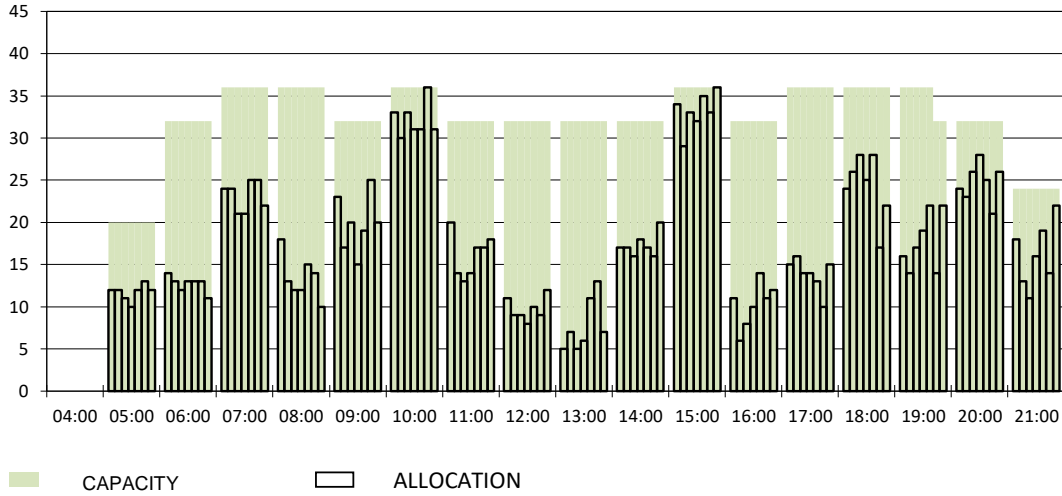
OVERVIEW MAIN CARRIERS

Number of average slots per week

	START OF SEASON				SLOT RETURN			
	W24	W25	+/-	Share	W24	W25	+/-	Share
ALL CARRIERS	4105	4281	4.3%		4098	4247	3.6%	
Swiss Carriers	2617	2491	-4.8%	58.2%	2602	2469	-5.1%	58.1%
<i>where of</i>								
Swiss International Air Lines	2261	2117	-6.4%	49.5%	2247	2102	-6.5%	49.5%
Edelweiss Air	291	310	6.5%	7.2%	281	298	6.0%	7.0%
Chair Airlines	62	63	1.6%	1.5%	72	68	-5.6%	1.6%
Helvetic	3	1	-66.7%	0.0%	2	1	-50.0%	0.0%
Foreign Carriers	1488	1790	20.3%	41.8%	1496	1778	18.9%	41.9%
<i>where of</i>								
Easyjet	96	147	53.1%	3.4%	98	146	49.0%	3.4%
Eurowings	110	124	12.7%	2.9%	111	124	11.7%	2.9%
British Airways, BACF	119	124	4.2%	2.9%	115	124	7.8%	2.9%
Austrian Airlines	64	107	67.2%	2.5%	64	107	67.2%	2.5%
KLM	83	81	-2.4%	1.9%	83	82	-1.2%	1.9%
Lufthansa	125	73	-41.6%	1.7%	125	73	-41.6%	1.7%
Brussels Airlines	0	62	100.0%	1.4%	10	62	520.0%	1.5%
Turkish Airlines	62	62	0.0%	1.4%	62	62	0.0%	1.5%
SAS	51	59	15.7%	1.4%	51	58	13.7%	1.4%
Air Dolomiti	0	52	100.0%	1.2%	0	52	100.0%	1.2%
Maj. foreign Carriers	710	891	25.5%	20.8%	719	890	23.8%	21.0%

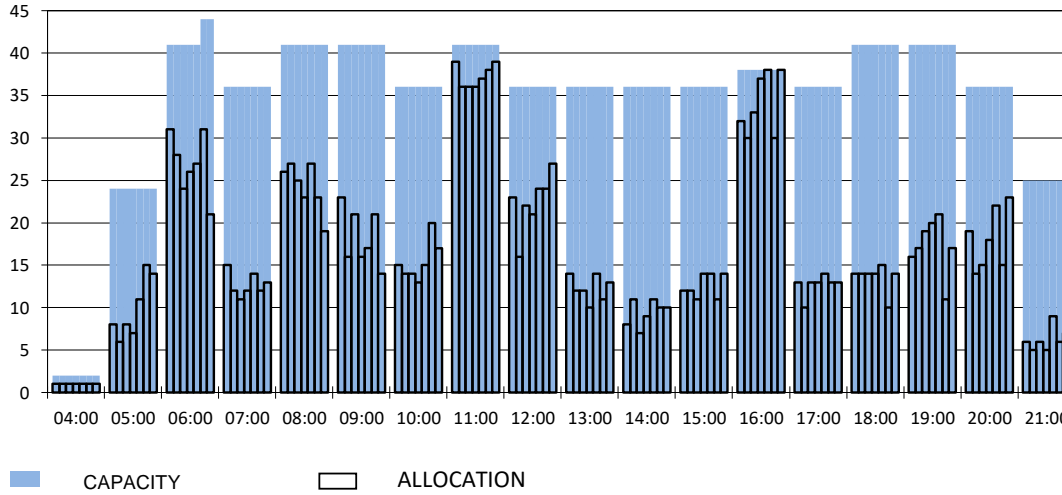
RUNWAY MOVEMENT START OF SEASON - ARRIVALS

Reference week, movements per hour - all times UTC



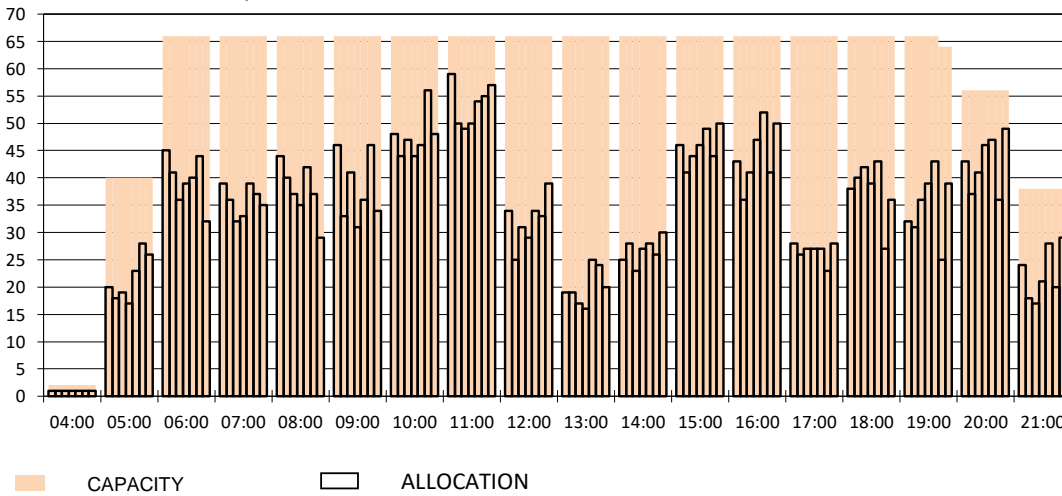
RUNWAY MOVEMENT START OF SEASON - DEPARTURES

Reference week, movements per hour - all times UTC



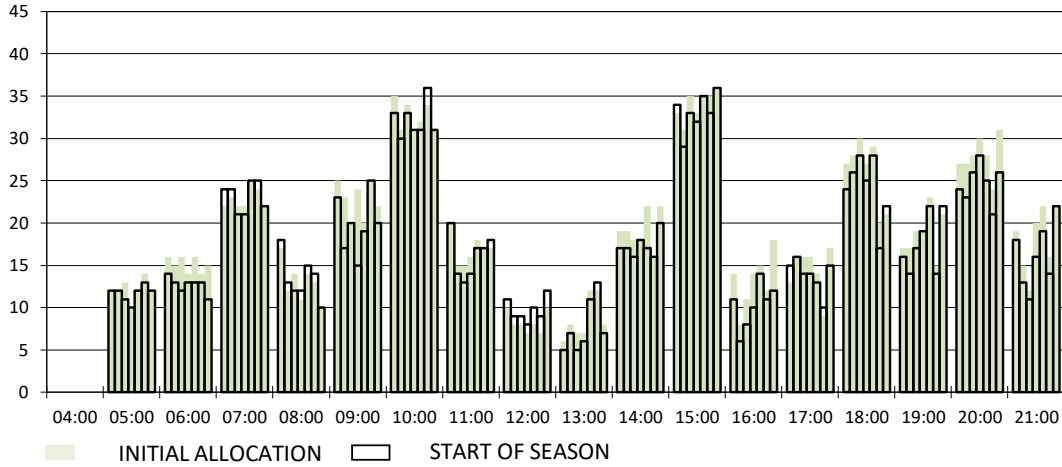
RUNWAY MOVEMENT START OF SEASON - TOTALS

Reference week, movements per hour - all times UTC



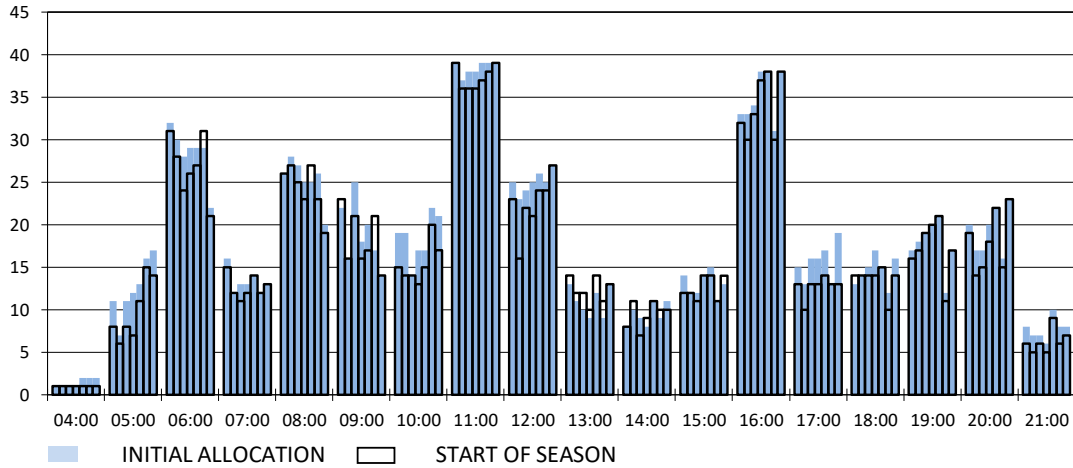
RUNWAY MOVEMENT DEVELOPMENT INITIAL ALLOCATION TO START OF SEASON - ARRIVALS

Reference week, movements per hour - all times UTC



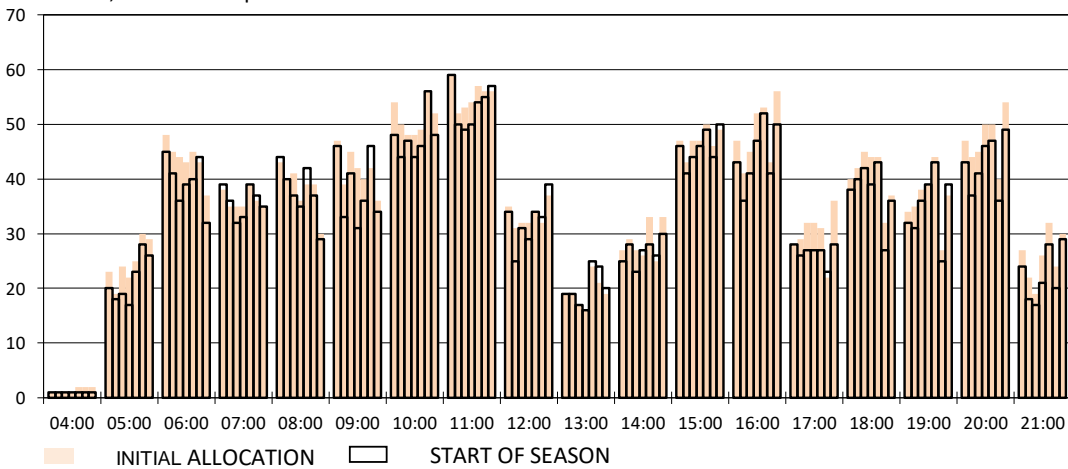
RUNWAY MOVEMENT DEVELOPMENT INITIAL ALLOCATION TO START OF SEASON - DEPARTURES

Reference week, movements per hour - all times UTC

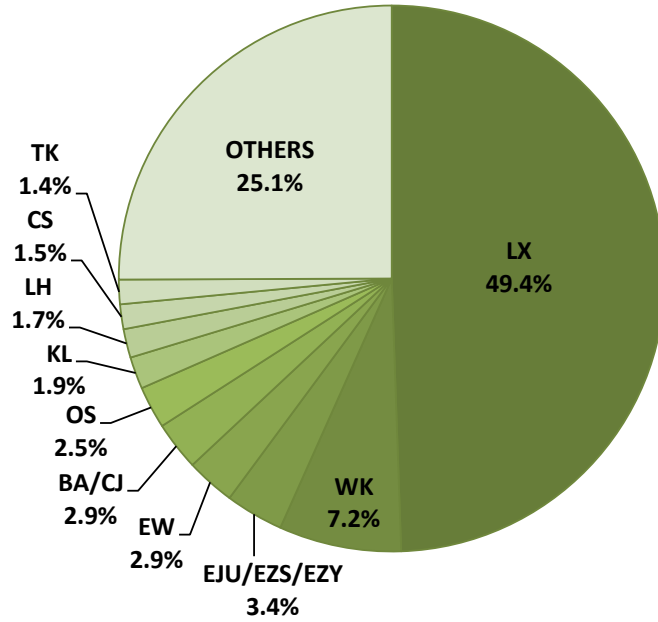


RUNWAY MOVEMENT DEVELOPMENT INITIAL ALLOCATION TO START OF SEASON - TOTALS

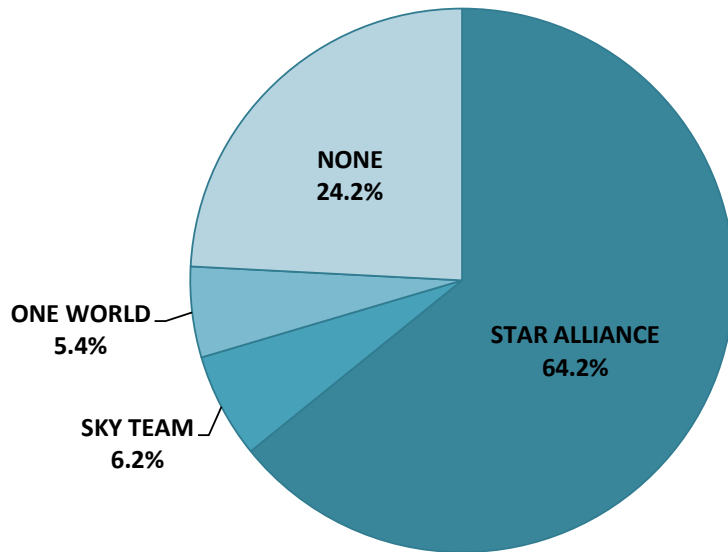
Reference week, movements per hour - all times UTC



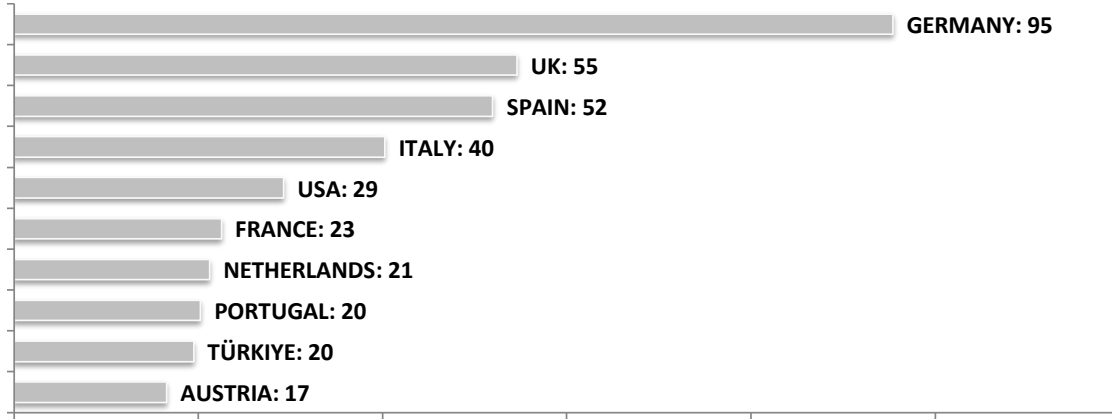
SEASONAL SLOT SHARE - 10 TOP CARRIER



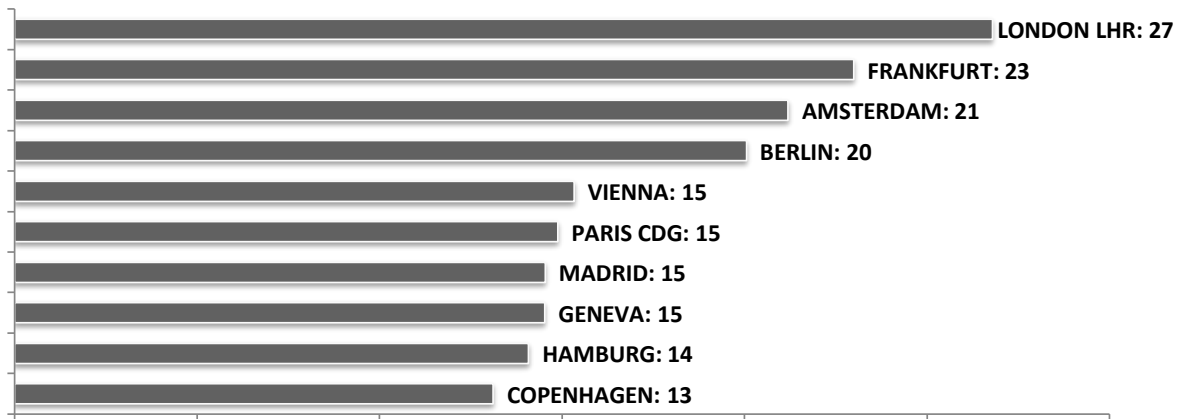
SEASONAL SLOT SHARE - PER ALLIANCES



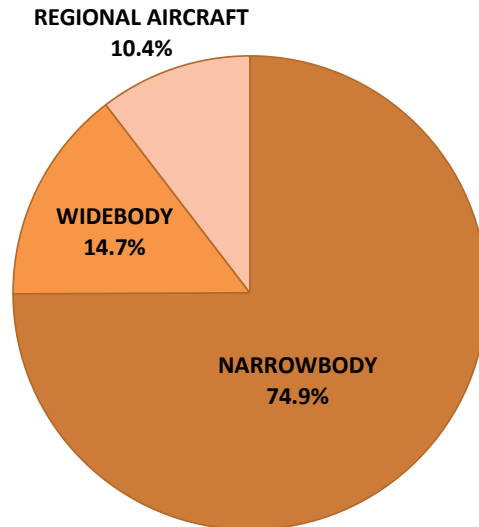
TOP 10 COUNTRIES - Number of Daily Slots



TOP 10 ROUTES - Number of Daily Slots



AIRCRAFT UTILISATION



Aircraft Sizes
 Widebody e.g. A330, B767, B777
 Narrowbody e.g. A220, A32S, B737
 Regional Aircraft e.g. CRJ, ERJ, DH4