

START OF SEASON REPORT GENEVA WINTER SEASON

26 OCTOBER 2025 - 28 MARCH 2026 (W25)

2025

KEY FIGURES	W24	W25	+/-
Cleared Airport Slots	58'113	57'677	-0.8%
Seats (1000)	10'172	10'167	0.0%
Seats per Airport Slot	175	176	0.7%
Runway Utilisation Days 1-5	65.4%	60.7%	-4.7%
Runway Utilisation Day 6	84.9%	85.4%	0.5%
Runway Utilisation Day 7	80.9%	80.4%	-0.5%
Number of Carriers	58	60	2

TABLE OF CONTENTS

	Page
Overview Main Carriers	2
Runway Histograms	3
Terminal Histograms	4
Slot Shares	5
Traffic Flows, Aircraft Utilisation	6

GLOSSARY OF TERMS

Allocation	The allocation of slots within declared capacity limits.
Capacity Limits	Limiting parameters declared by the Airport Operator used in the coordination process.
Seats	The number of seats based on the aircraft configuration advised by the airline.

GUIDE TO HISTOGRAMS

The histograms show the pattern of traffic by time of day against the appropriate capacity limit. Each time period consists of seven columns representing the days-of-week, Monday through Sunday. All histograms are based on a reference week.

For Winter 2025 the reference week is 09-15 February 2026.

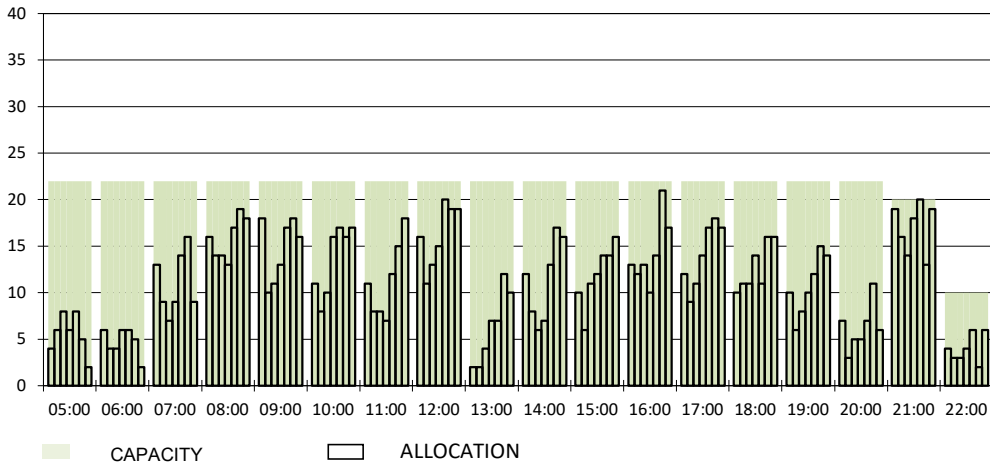
OVERVIEW MAIN CARRIERS

Number of average slots per week

	START OF SEASON				SLOT RETURN			
	W24	W25	+/-	Share	W24	W25	+/-	Share
ALL CARRIERS	2642	2622	-0.8%		2648	2622	-1.0%	
Swiss Carriers	953	838	-12.1%	32.0%	952	830	-12.8%	31.7%
<i>where of</i>								
EasyJet Switzerland	579	504	-13.0%	19.2%	576	494	-14.2%	18.8%
Swiss International Air Lines	374	334	-10.7%	12.7%	376	336	-10.6%	12.8%
Foreign Carriers	1689	1784	5.6%	68.0%	1696	1792	5.7%	68.3%
<i>where of</i>								
EasyJet Europe & UK	414	461	11.4%	17.6%	413	452	9.4%	17.2%
British Airways / BA EuroFlyer / BA CityFlyer	178	176	-1.1%	6.7%	180	180	0.0%	6.9%
Air France	109	107	-1.8%	4.1%	110	108	-1.8%	4.1%
Lufthansa	51	101	98.0%	3.9%	52	103	98.1%	3.9%
KLM	84	84	0.0%	3.2%	84	84	0.0%	3.2%
Iberia	73	76	4.1%	2.9%	73	76	4.1%	2.9%
Air Portugal	52	51	-1.9%	1.9%	52	52	0.0%	2.0%
Scandinavian Airlines	38	43	13.2%	1.6%	38	43	13.2%	1.6%
Turkish Airlines	42	42	0.0%	1.6%	42	42	0.0%	1.6%
Brussels Airlines	39	39	0.0%	1.5%	39	40	2.6%	1.5%
Maj. foreign Carriers	1080	1180	9.3%	45.0%	1083	1180	9.0%	45.0%

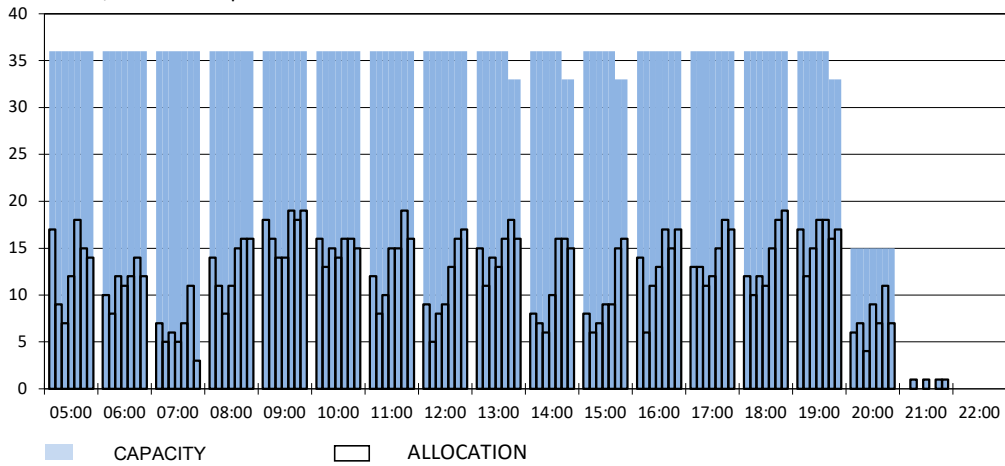
RUNWAY MOVEMENT START OF SEASON - ARRIVALS

Reference week, movements per hour - all times UTC



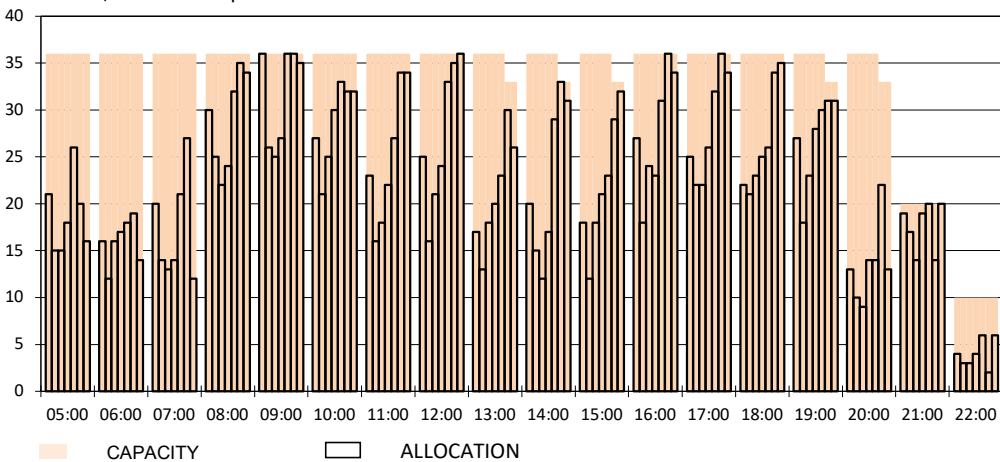
RUNWAY MOVEMENT START OF SEASON - DEPARTURES

Reference week, movements per hour - all times UTC



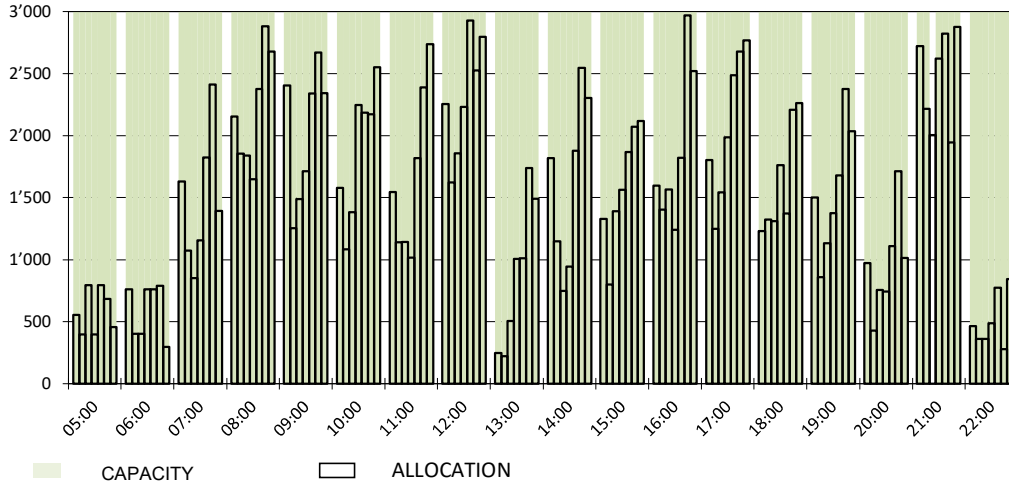
RUNWAY MOVEMENT START OF SEASON - TOTALS

Reference week, movements per hour - all times UTC



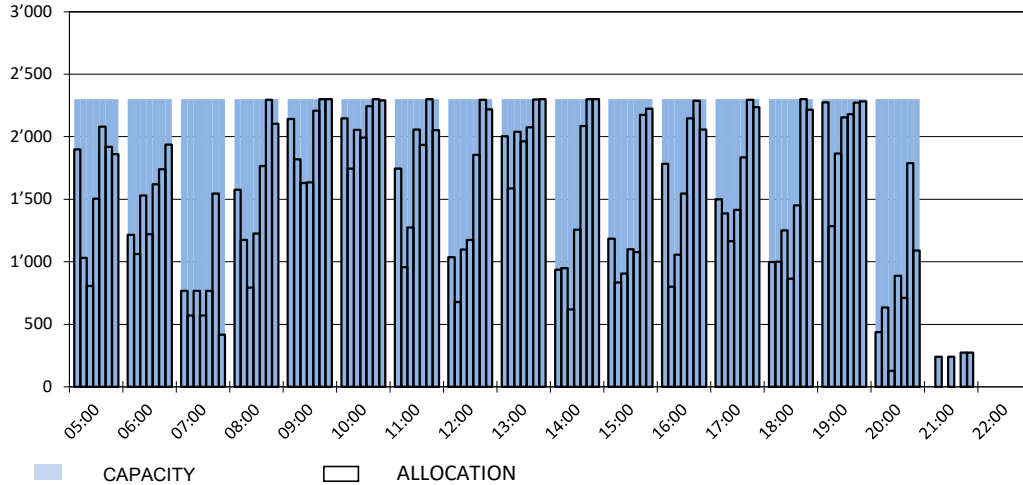
MAIN TERMINAL START OF SEASON - ARRIVALS

Reference week, movements per hour - all times UTC



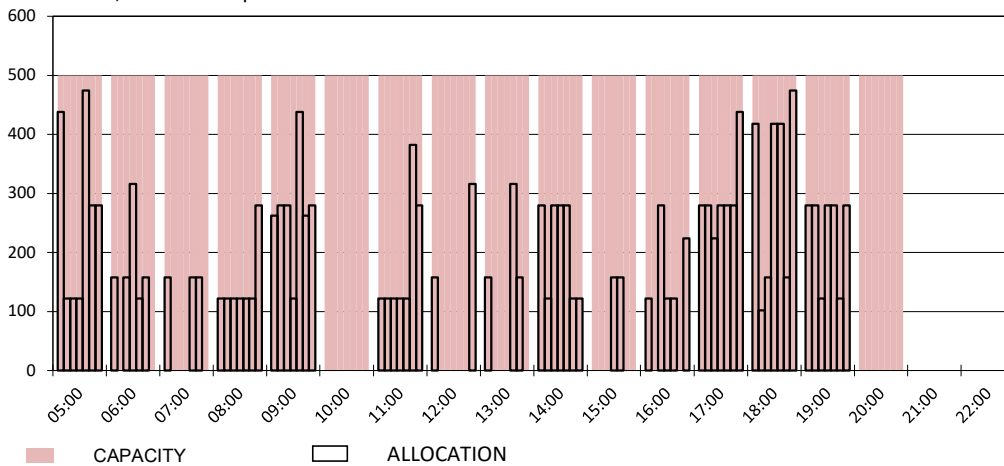
MAIN TERMINAL START OF SEASON - DEPARTURES

Reference week, movements per hour - all times UTC

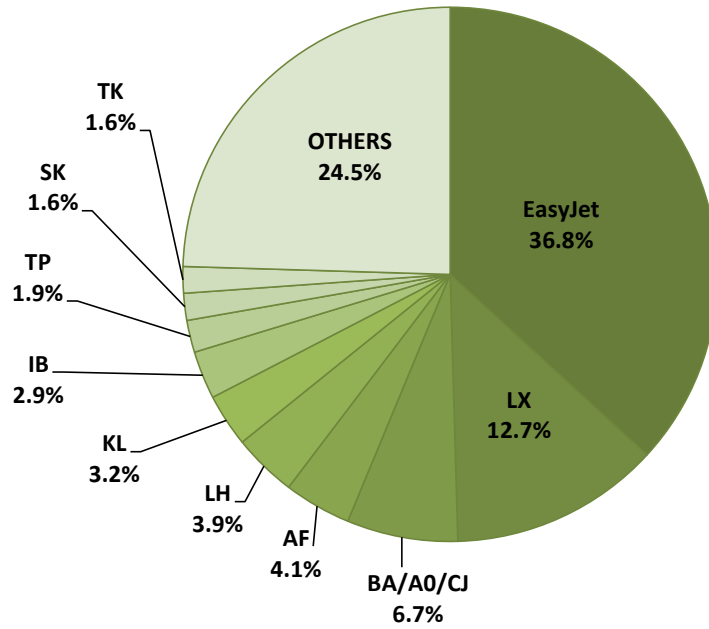


FRENCH SECTOR TERMINAL START OF SEASON - DEPARTURES

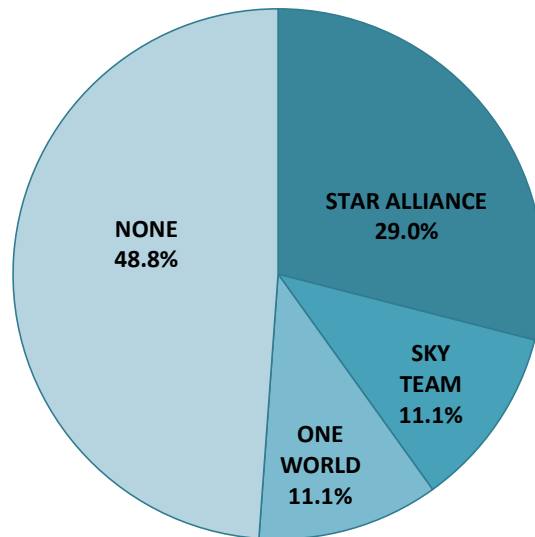
Reference week, movements per hour - all times UTC



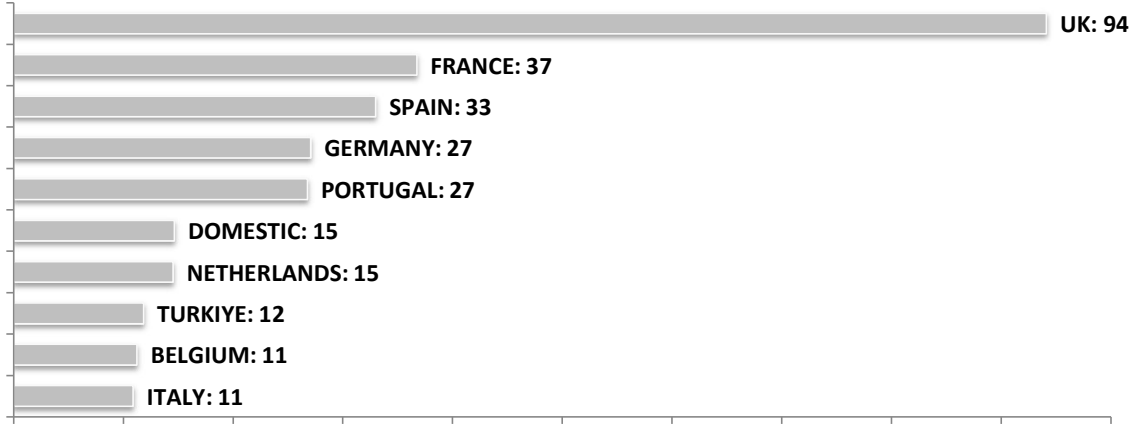
SEASONAL SLOT SHARE - 10 TOP CARRIER



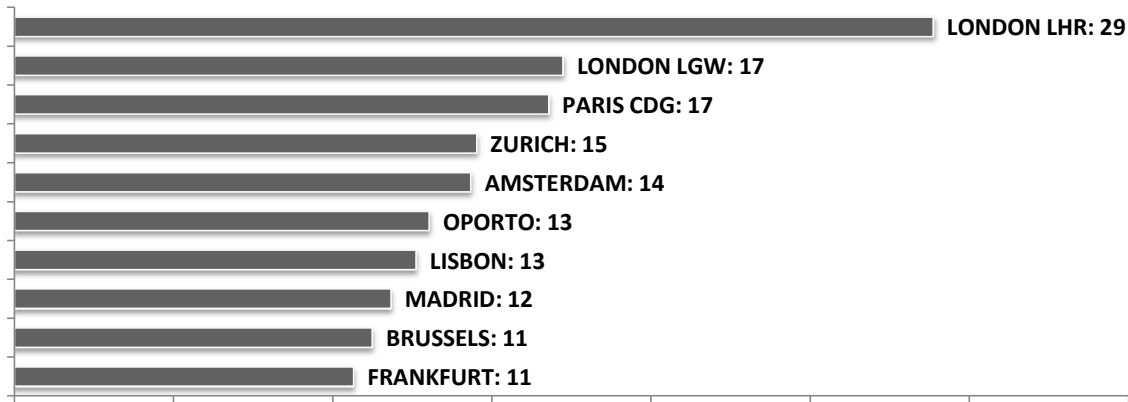
SEASONAL SLOT SHARE - PER ALLIANCES



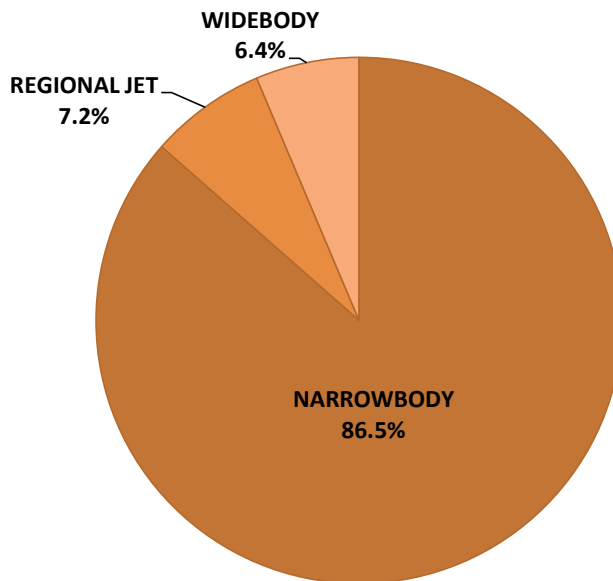
TOP 10 COUNTRIES - Number of Daily Slots



TOP 10 ROUTES - Number of Daily Slots



AIRCRAFT UTILISATION



Aircraft Sizes
 Widebody e.g. A330, A350, B777
 Narrowbody e.g. A220, A32S, B737
 Regional Jet e.g. CRJ, ERJ, DH4