

START OF SEASON REPORT ZURICH SUMMER SEASON

29 MARCH - 24 OCTOBER 2026 (S26)

2026

KEY FIGURES	S25	S26	+/-
Cleared Airport Slots	152'572	160'691	5.3%
Seats offered (1000)	27'760	29'108	4.9%
Seats per Airport Slot	182	181	-0.4%
Runway Utilisation	68.6%	72.2%	3.6%
Number of Carriers	83	81	-2

TABLE OF CONTENTS

	Page
Overview Main Carriers	2
Runway Histograms	3,4
Slot Shares	5
Traffic Flows, Aircraft Utilisation	6

GLOSSARY OF TERMS

Allocation	The allocation of slots within declared capacity limits.
Capacity Limits	Limiting parameters declared by the Airport Operator used in the coordination process.
Seats	The number of seats based on the aircraft configuration advised by the airline.

GUIDE TO HISTOGRAMS

The histograms show the pattern of traffic by time of day against the appropriate capacity limit.

Each time period consists of seven columns representing the days-of-week, Monday through Sunday.

All histograms are based on a reference week. For Summer 2026, the reference week is 14-20 September 2026.

OVERVIEW MAIN CARRIERS

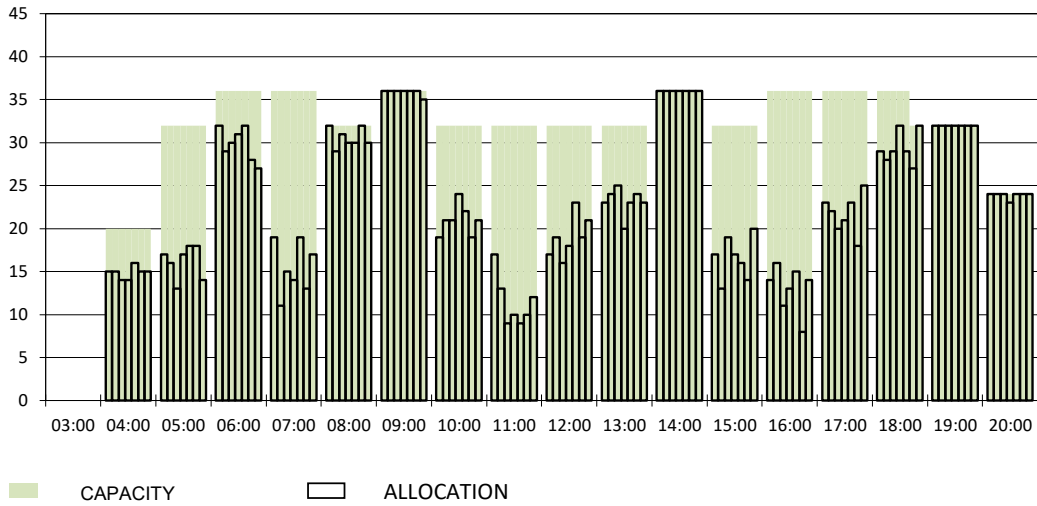
Number of average slots per week

	START OF SEASON			
	S25	S26	+/-	Share
ALL CARRIERS	5086	5356	5.3%	
Swiss Carriers	3273	3391	3.6%	63.3%
<i>where of</i>				
Swiss International Air Lines	2661	2745	3.2%	51.3%
Edelweiss Air	506	523	3.4%	9.8%
Chair Airlines	104	120	15.4%	2.2%
Helvetic	2	3	50.0%	0.1%
Foreign Carriers	1813	1965	8.4%	36.7%
<i>where of</i>				
Easyjet	166	158	-4.8%	2.9%
Eurowings	135	138	2.2%	2.6%
British Airways, BACF	76	119	56.6%	2.2%
KLM	70	97	38.6%	1.8%
Austrian Airlines	58	86	48.3%	1.6%
Lufthansa	83	83	0.0%	1.5%
Turkish Airlines	86	81	-5.8%	1.5%
Condor	67	76	13.4%	1.4%
SunExpress	58	62	6.9%	1.2%
SAS	54	57	5.6%	1.1%
Maj. foreign Carriers	853	957	12.2%	17.9%

SLOT RETURN			
S25	S26	+/-	Share
5080	5382	5.9%	
3273	3388	3.5%	63.0%
2676	2746	2.6%	51.0%
499	520	4.2%	9.7%
96	121	26.0%	2.2%
2	1	-50.0%	0.0%
1807	1994	10.3%	37.0%
166	166	0.0%	3.1%
135	138	2.2%	2.6%
77	119	54.5%	2.2%
84	98	16.7%	1.8%
59	86	45.8%	1.6%
83	83	0.0%	1.5%
86	81	-5.8%	1.5%
62	78	25.8%	1.4%
59	62	5.1%	1.2%
54	58	7.4%	1.1%
865	969	12.0%	18.0%

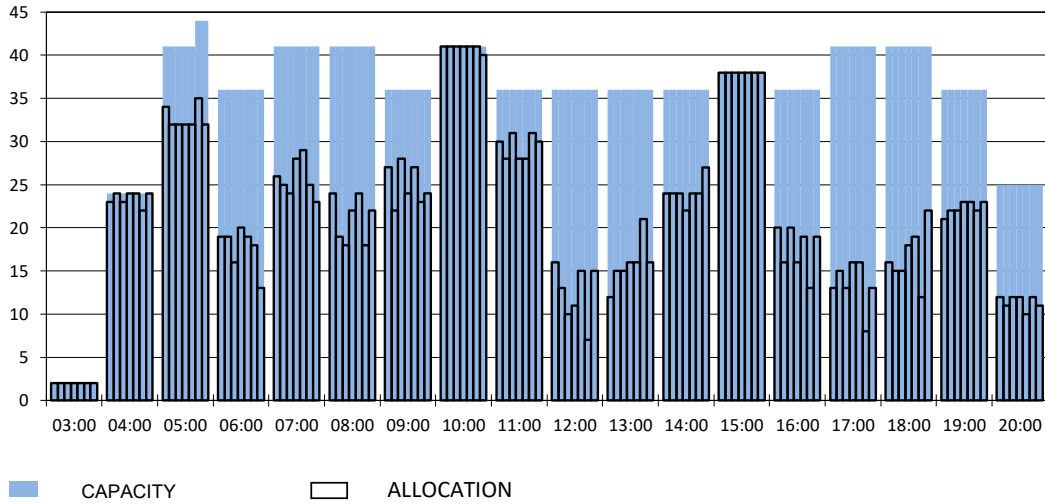
RUNWAY MOVEMENT START OF SEASON - ARRIVALS

Reference week, movements per hour - all times UTC



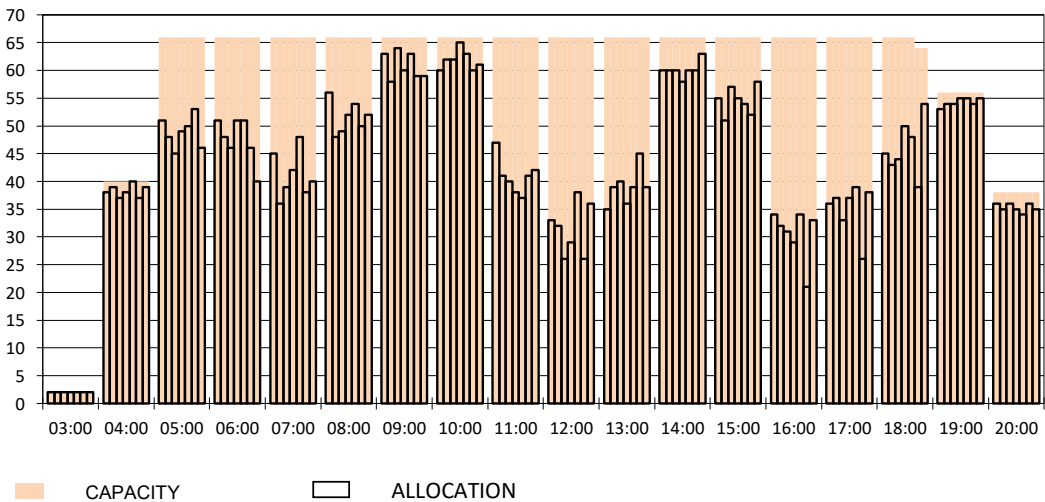
RUNWAY MOVEMENT START OF SEASON - DEPARTURES

Reference week, movements per hour - all times UTC



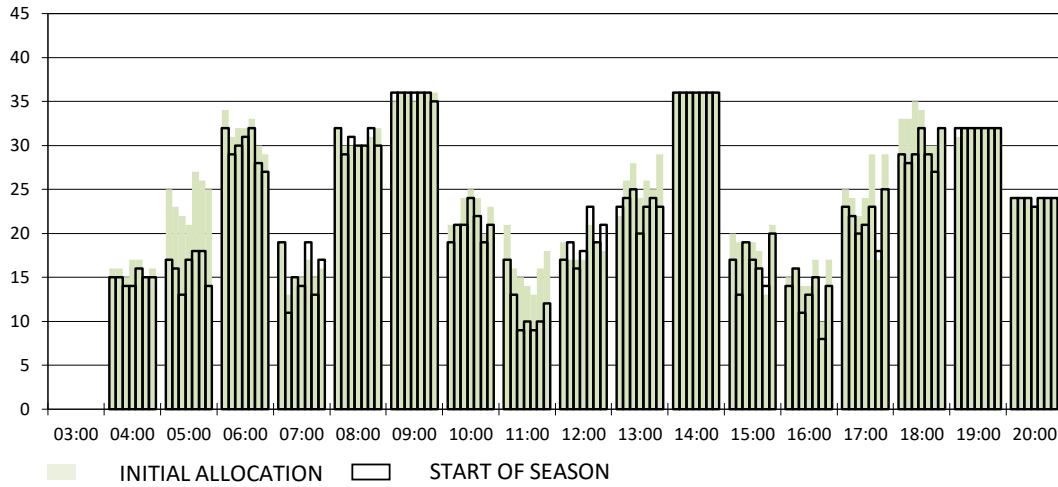
RUNWAY MOVEMENT START OF SEASON - TOTALS

Reference week, movements per hour - all times UTC



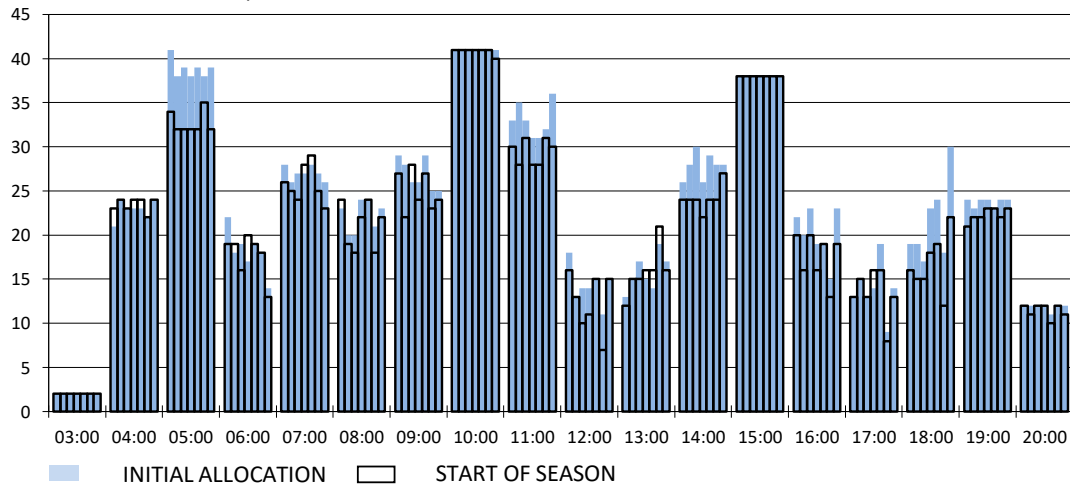
RUNWAY MOVEMENT DEVELOPMENT INITIAL ALLOCATION TO START OF SEASON - ARRIVALS

Reference week, movements per hour - all times UTC



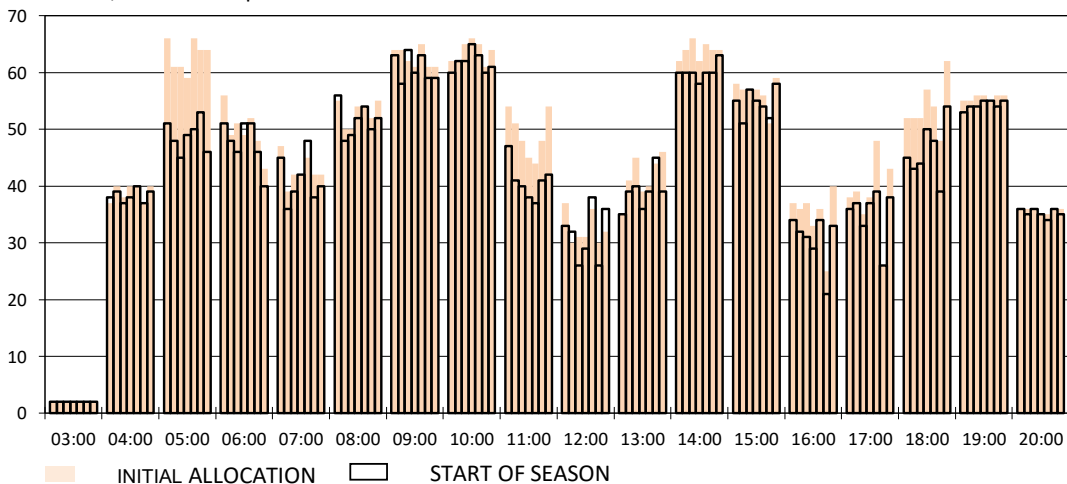
RUNWAY MOVEMENT DEVELOPMENT INITIAL ALLOCATION TO START OF SEASON - DEPARTURES

Reference week, movements per hour - all times UTC

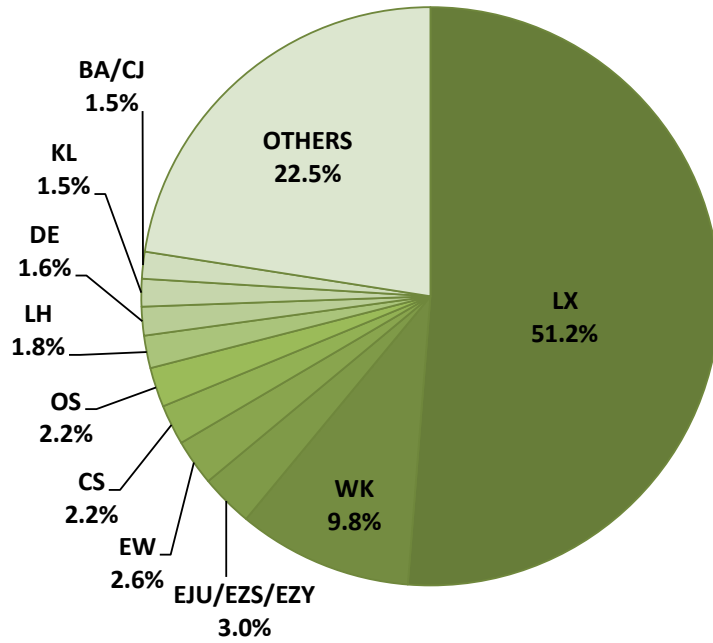


RUNWAY MOVEMENT DEVELOPMENT INITIAL ALLOCATION TO START OF SEASON - TOTALS

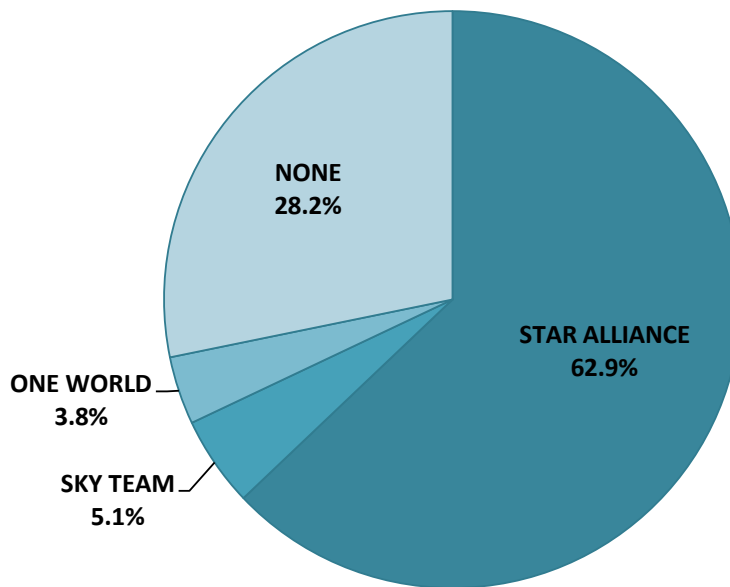
Reference week, movements per hour - all times UTC



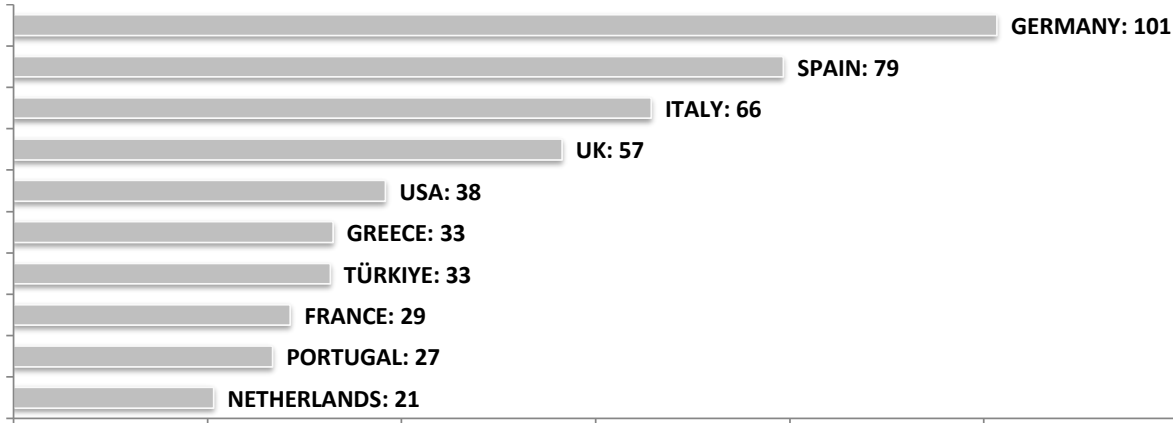
SEASONAL SLOT SHARE - 10 TOP CARRIER



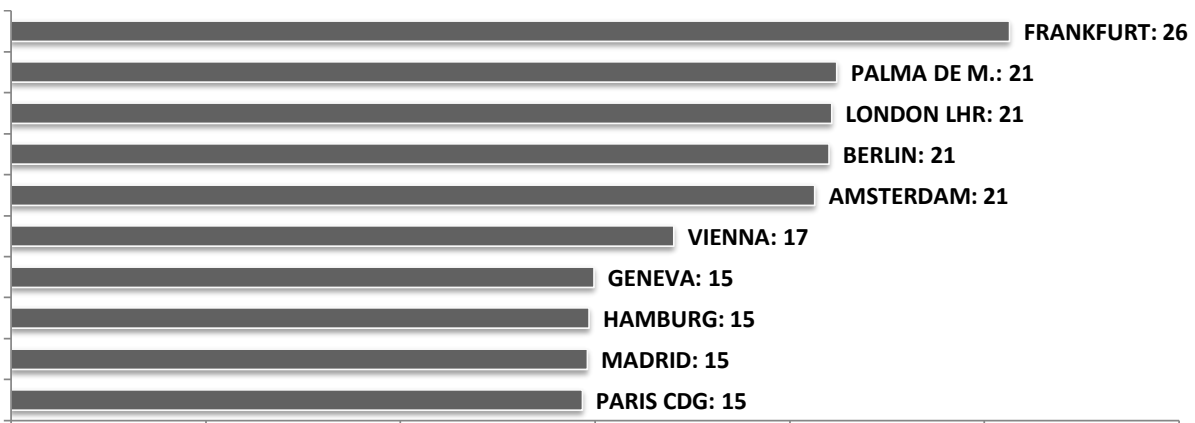
SEASONAL SLOT SHARE - PER ALLIANCES



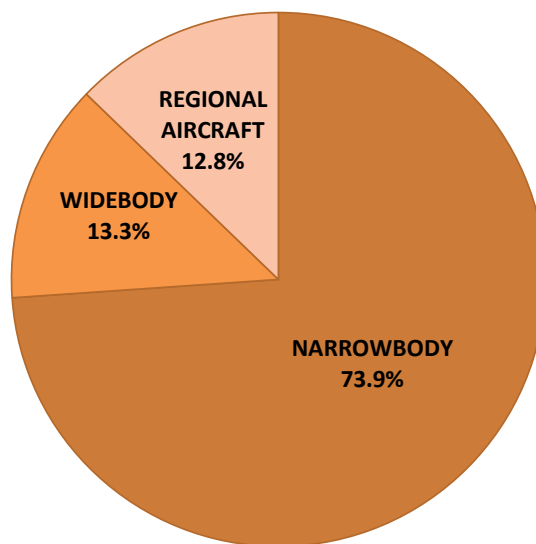
TOP 10 COUNTRIES - Number of Daily Slots



TOP 10 ROUTES - Number of Daily Slots



AIRCRAFT UTILISATION



Aircraft Sizes
 Widebody e.g. A330, A350, B777
 Narrowbody e.g. A220, A32S, B737
 Regional Aircraft e.g. CRJ, ERJ, DH4