

START OF SEASON REPORT GENEVA SUMMER SEASON

29 MARCH - 24 OCTOBER 2026 (S26)

2026

| KEY FIGURES | S25 | S26 | +/- |
|------------------------|--------|---------------|--------------|
| Airport Slots | 80,052 | 77,662 | -3.0% |
| Seats offered (1000) | 13,996 | 13,677 | -2.3% |
| Seats per Airport Slot | 175 | 176 | 0.6% |
| Runway Utilisation | 62.9% | 61.0% | -1.9% |
| Number of Carriers | 60 | 63 | +3 |

TABLE OF CONTENTS

| | Page |
|-------------------------------------|------|
| Management Summary | 2 |
| Overview Main Carriers | 3 |
| Runway Histograms | 4 |
| Terminal Histograms | 5 |
| Slot Shares | 6 |
| Traffic Flows, Aircraft Utilisation | 7 |

GLOSSARY OF TERMS

| | |
|------------------------|--|
| Allocation | The allocation of slots within declared capacity limits. |
| Capacity Limits | Limiting parameters declared by the Airport Operator used in the coordination process. |
| Seats | The number of seats based on the aircraft configuration advised by the airline. |

GUIDE TO HISTOGRAMS

The histograms show the pattern of traffic by time of day against the appropriate capacity limit. Each time period consists of seven columns representing the days-of-week, Monday through Sunday. All histograms are based on a reference week. For Summer 2026 the reference week is 14-20 September 2026.

OVERVIEW MAIN CARRIERS

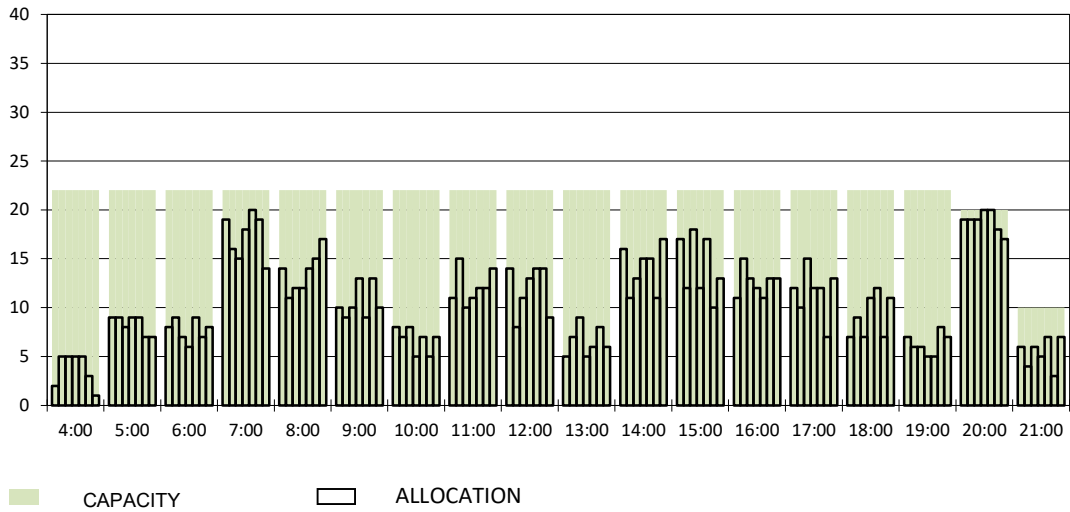
Number of average slots per week

| | START OF SEASON | | | |
|--|-----------------|------|--------|-------|
| | S25 | S26 | +/- | Share |
| ALL CARRIERS | 2668 | 2589 | -3.0% | |
| Swiss Carriers | 1143 | 994 | -13.0% | 38.4% |
| <i>where of</i> | | | | |
| EasyJet Switzerland | 652 | 636 | -2.5% | 24.6% |
| Swiss International Air Lines | 491 | 358 | -27.1% | 13.8% |
| Foreign Carriers | 1525 | 1595 | 4.6% | 61.6% |
| <i>where of</i> | | | | |
| EasyJet Europe & UK | 405 | 394 | -2.7% | 15.2% |
| Air France | 98 | 98 | 0.0% | 3.8% |
| British Airways / BA Cityflyer /BA Euroflyer | 88 | 98 | 11.4% | 3.8% |
| KLM | 84 | 84 | 0.0% | 3.2% |
| Iberia | 73 | 75 | 2.7% | 2.9% |
| Brussels Airlines | 66 | 66 | 0.0% | 2.5% |
| TAP Air Portugal | 52 | 52 | 0.0% | 2.0% |
| Turkish Airlines | 46 | 42 | -8.7% | 1.6% |
| Lufthansa / Air Dolomiti | 0 | 42 | 100.0% | 1.6% |
| Maj. foreign Carriers | 912 | 951 | 4.3% | 36.7% |

| SLOT RETURN | | | |
|-------------|------|--------|-------|
| S25 | S26 | +/- | Share |
| 2708 | 2596 | -4.1% | |
| 1168 | 993 | -15.0% | 38.3% |
| 650 | 640 | -1.5% | 24.7% |
| 518 | 353 | -31.9% | 13.6% |
| 1540 | 1603 | 4.1% | 61.7% |
| 409 | 391 | -4.4% | 15.1% |
| 98 | 100 | 2.0% | 3.9% |
| 90 | 101 | 12.2% | 3.9% |
| 84 | 84 | 0.0% | 3.2% |
| 73 | 75 | 2.7% | 2.9% |
| 68 | 67 | -1.5% | 2.6% |
| 52 | 52 | 0.0% | 2.0% |
| 42 | 42 | 0.0% | 1.6% |
| 0 | 42 | 100.0% | 1.6% |
| 916 | 954 | 4.1% | 36.7% |

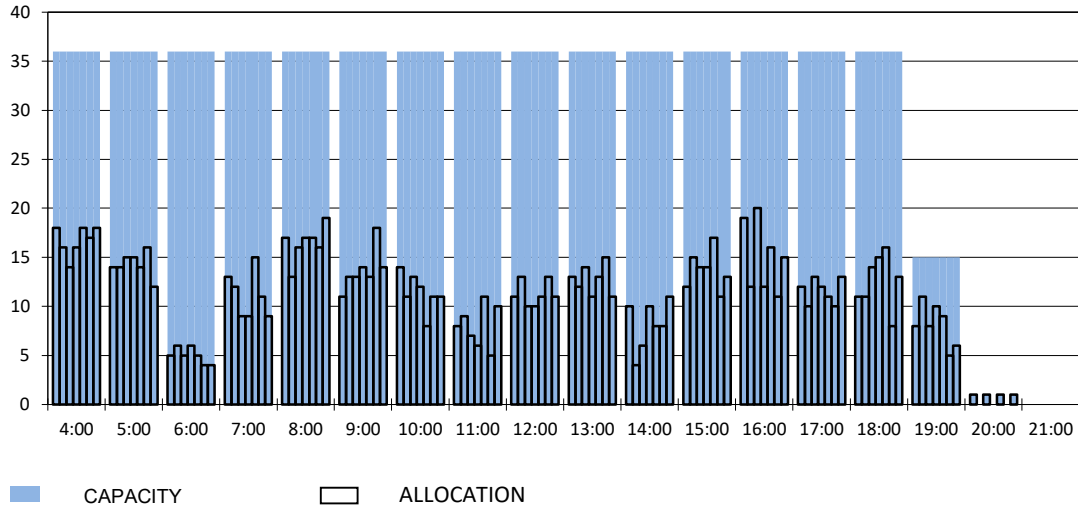
RUNWAY START OF SEASON - ARRIVALS

Reference week, movements per hour - all times UTC



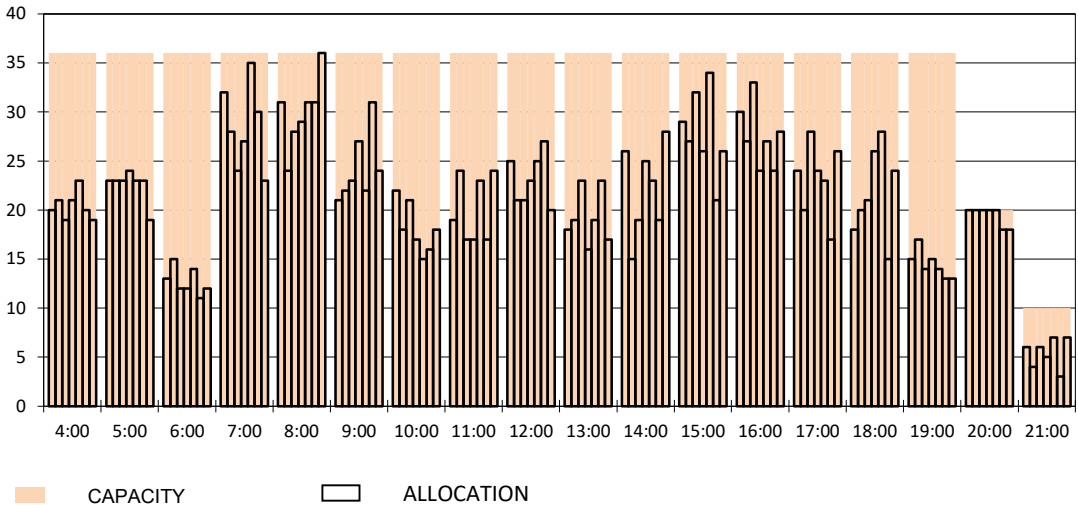
RUNWAY MOVEMENT START OF SEASON - DEPARTURES

Reference week, movements per hour - all times UTC



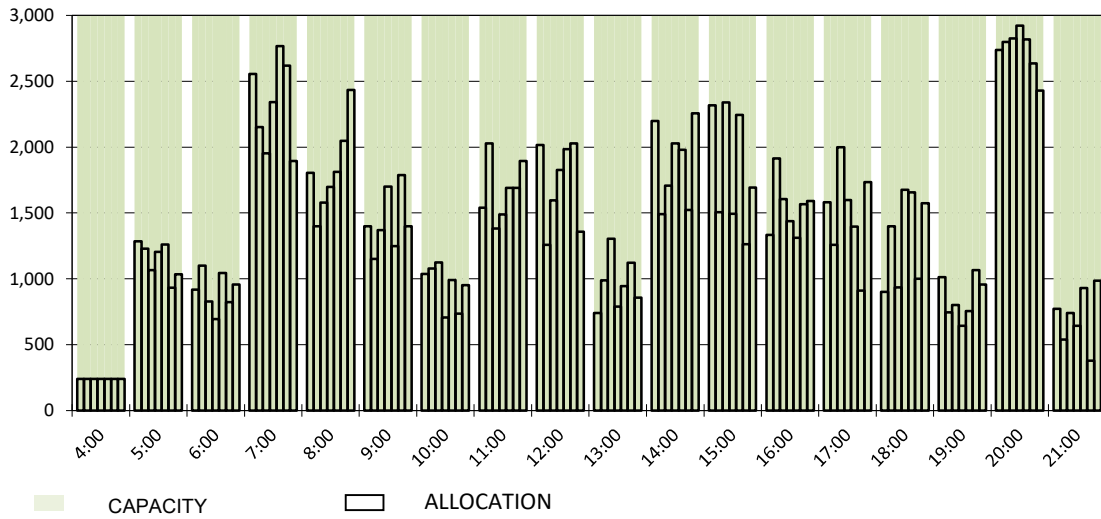
RUNWAY MOVEMENT START OF SEASON - TOTALS

Reference week, movements per hour - all times UTC



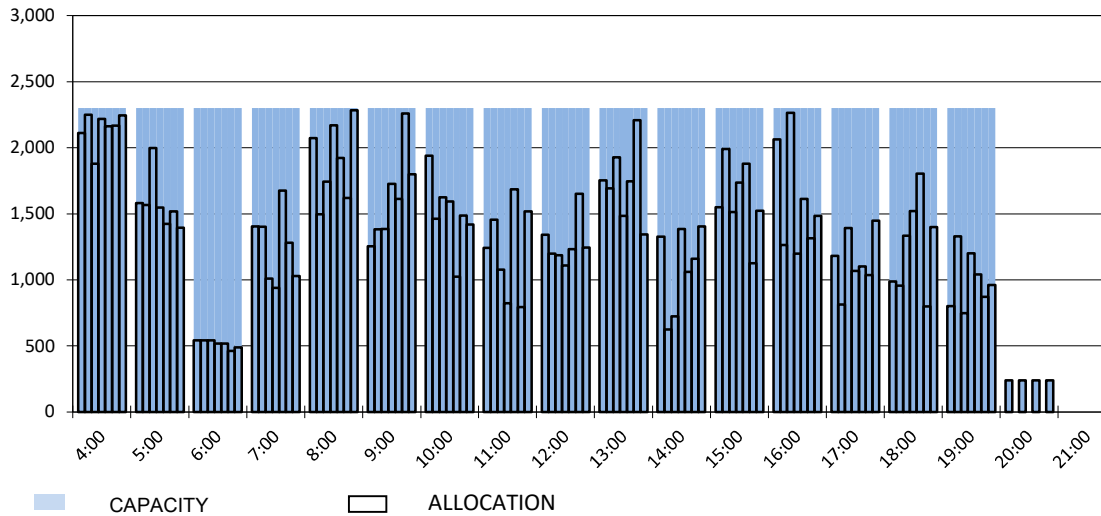
MAIN TERMINAL START OF SEASON - ARRIVALS

Reference week, passengers per hour - all times UTC



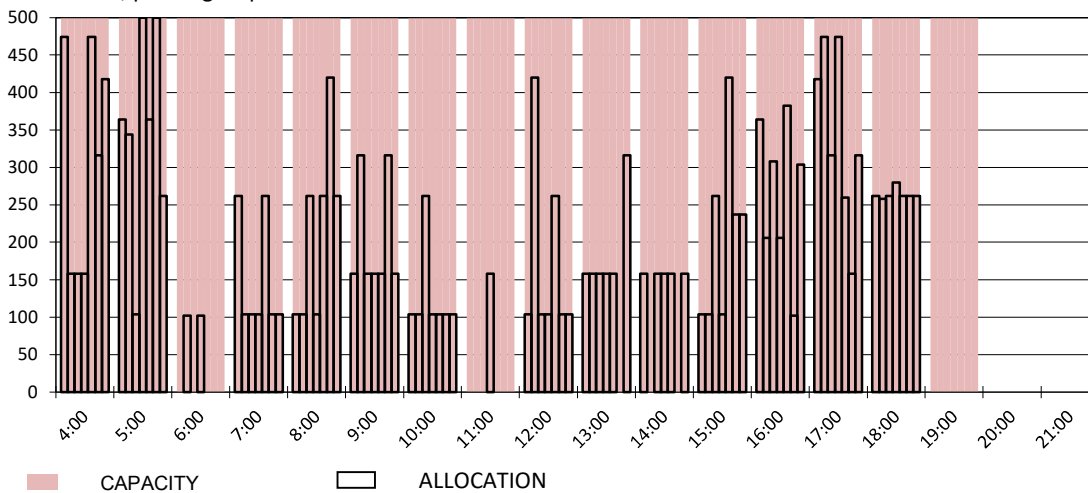
MAIN TERMINAL START OF SEASON - DEPARTURES

Reference week, passengers per hour - all times UTC

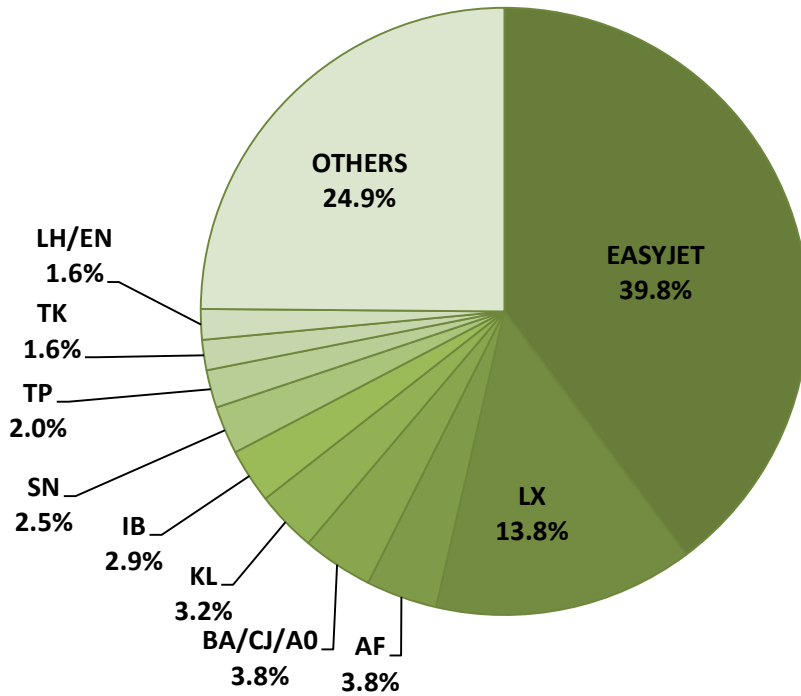


FRENCH SECTOR TERMINAL START OF SEASON - DEPARTURES

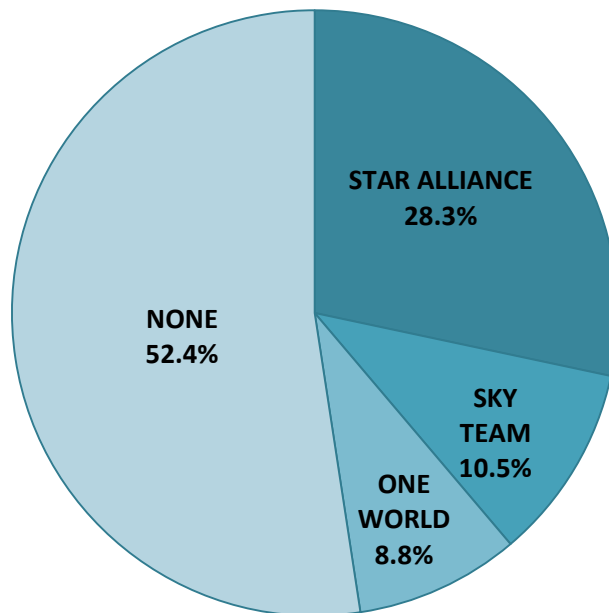
Reference week, passengers per hour - all times UTC



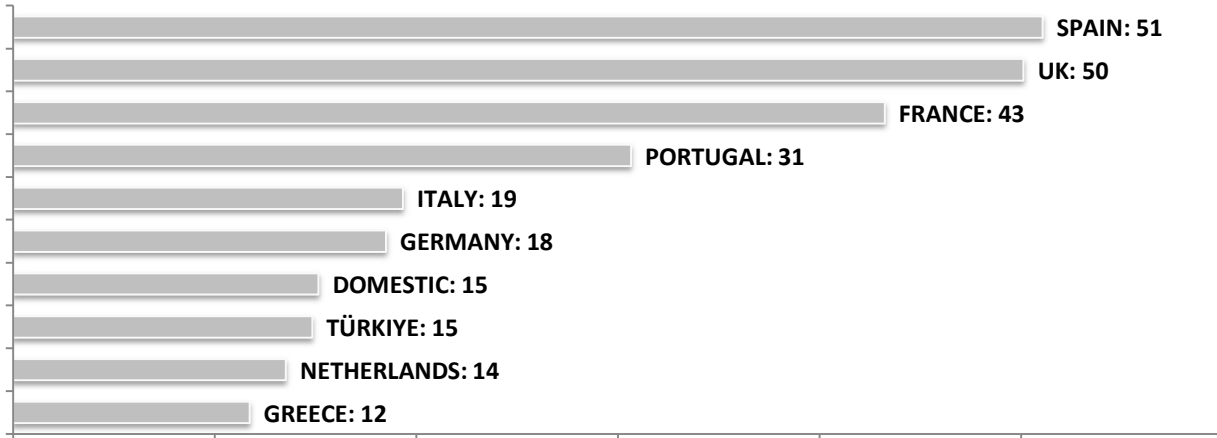
SEASONAL SLOT SHARE - 10 TOP CARRIER



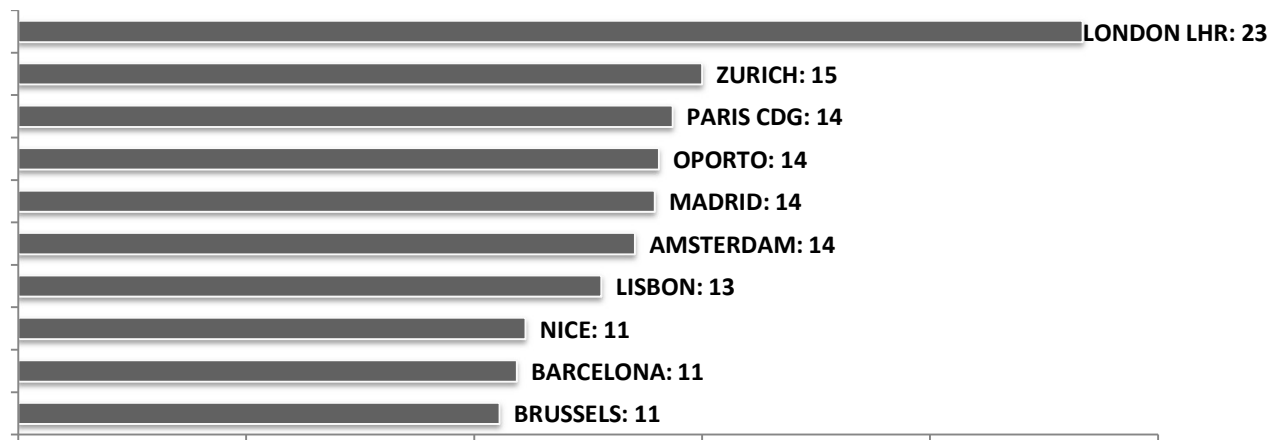
SEASONAL SLOT SHARE - PER ALLIANCES



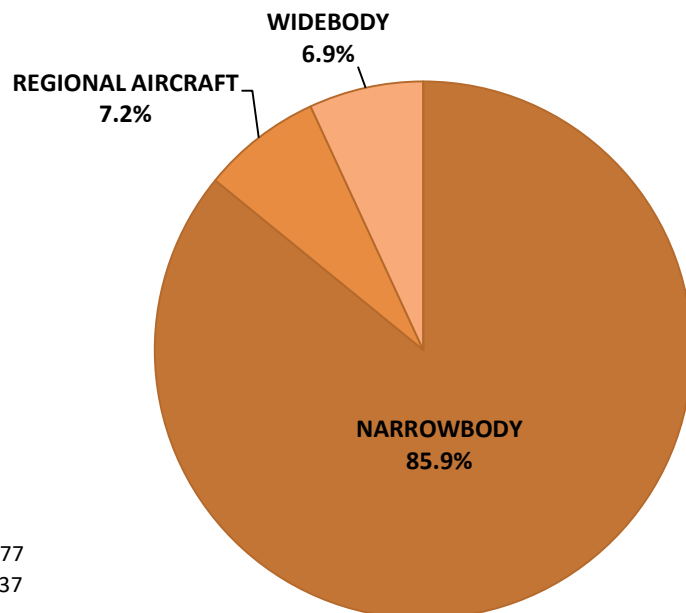
TOP 10 COUNTRIES - Number of Daily Slots



TOP 10 ROUTES - Number of Daily Slots



AIRCRAFT UTILISATION



Aircraft Sizes

- Widebody e.g. A330, A350, B777
- Narrowbody e.g. A220, A32S, B737
- Regional Aircraft e.g. CRJ, ERJ, DH4